

# Appendix B

WIFI 2.4G
WIFI 5G
BT

Measurement Report for Creader Professional 919C LITE V2, EDGE LEFT, WLAN 2.4GHz, IEEE 802.11b WiFi 2.4 GHz (DSSS, 1 Mbps), Channel 1 (2412.000 MHz)

Device Under Test Properties

Model	Dimensions [mm]
Creader Professional 919C LITE V2	144.8 x 246.8 x 36.0

Exposure Conditions

Phantom Section, TSL	Position, Test Distance [mm]	Band	Group, UID	Frequency [MHz], Channel Number	Conversion Factor	TSL Conductivity [S/m]	TSL Permittivity
Flat, HSL	EDGE LEFT, 0.00	WLAN 2.4GHz	WLAN, 10012-CAB	2412.000, 1	7.27	1.78	40.3

Hardware Setup

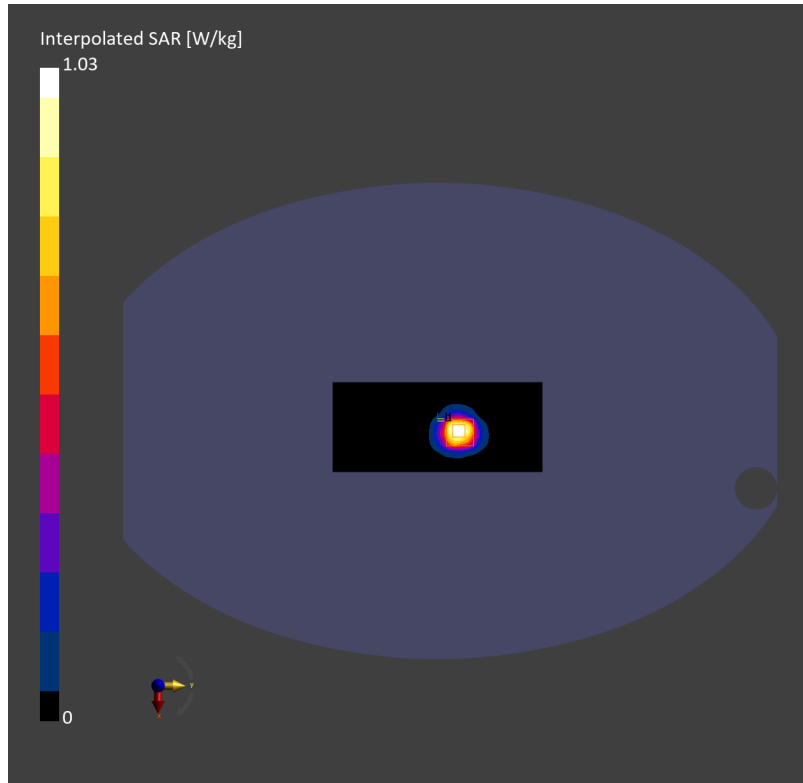
Phantom	TSL	Probe, Calibration Date	DAE, Calibration Date
ELI V8.0 (20deg probe tilt) - 2227	HSL2450	EX3DV4 - SN7812, 2024-06-25	DAE4ip Sn1847, 2024-12-31

Scans Setup

	Area Scan	Zoom Scan
Grid Extents [mm]	72.0 x 168.0	30.0 x 30.0 x 30.0
Grid Steps [mm]	12.0 x 12.0	5.0 x 5.0 x 5.0
Sensor Surface [mm]	3.0	1.4
Graded Grid	N/A	Yes
Grading Ratio	N/A	1.5
MAIA	N/A	N/A
Surface Detection	VMS + 6p	VMS + 6p
Scan Method	Measured	Measured

Measurement Results

	Area Scan	Zoom Scan
Date	2025-05-17, 10:25	2025-05-17, 10:30
psSAR1g [W/Kg]	0.832	0.883
psSAR10g [W/Kg]	0.394	0.396
Power Drift [dB]	0.06	0.07
Power Scaling	Disabled	Disabled
Scaling Factor [dB]		
TSL Correction	No correction	No correction
M2/M1 [%]		50.2
Dist 3dB Peak [mm]		9.9



Measurement Report for Creader Professional 919C LITE V2, EDGE LEFT, U-NII-1, IEEE 802.11a WiFi 5 GHz (OFDM, 6 Mbps), Channel 48 (5240.000 MHz)

Device Under Test Properties

Model	Dimensions [mm]
Creader Professional 919C LITE V2	144.8 x 246.8 x 36.0

Exposure Conditions

Phantom Section, TSL	Position, Test Distance [mm]	Band	Group, UID	Frequency [MHz], Channel Number	Conversion Factor	TSL Conductivity [S/m]	TSL Permittivity
Flat, HSL	EDGE LEFT, 0.00	U-NII-1	WLAN, 10062-CAE	5240.000, 48	5.25	4.74	36.4

Hardware Setup

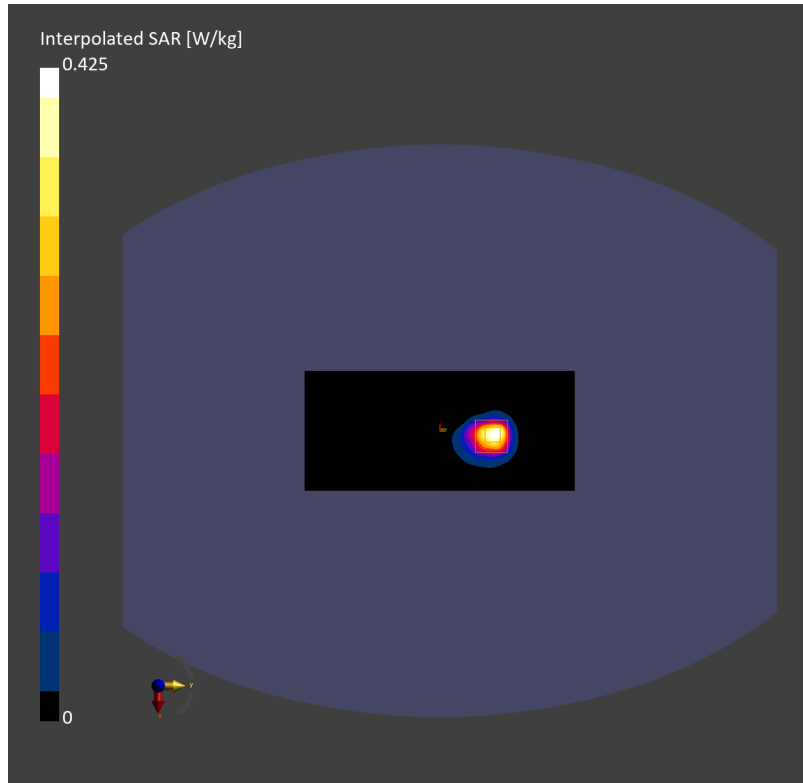
Phantom	TSL	Probe, Calibration Date	DAE, Calibration Date
ELI V8.0 (20deg probe tilt) - 2227	HSL5GHz	EX3DV4 - SN7858, 2025-01-15	DAE4ip Sn1847, 2024-12-31

Scans Setup

	Area Scan	Zoom Scan
Grid Extents [mm]	80.0 x 180.0	24.0 x 24.0 x 22.0
Grid Steps [mm]	10.0 x 10.0	4.0 x 4.0 x 2.0
Sensor Surface [mm]	3.0	1.4
Graded Grid	N/A	Yes
Grading Ratio	N/A	1.4
MAIA	Y	Y
Surface Detection	VMS + 6p	VMS + 6p
Scan Method	Measured	Measured

Measurement Results

	Area Scan	Zoom Scan
Date	2025-05-18, 20:09	2025-05-18, 20:15
psSAR1g [W/Kg]	0.302	0.312
psSAR10g [W/Kg]	0.104	0.096
Power Drift [dB]	0.02	-0.03
Power Scaling	Disabled	Disabled
Scaling Factor [dB]		
TSL Correction	No correction	No correction
M2/M1 [%]		51.5
Dist 3dB Peak [mm]		7.9



Measurement Report for Creader Professional 919C LITE V2, EDGE LEFT, U-NII-3 Standalone, IEEE 802.11a WiFi 5 GHz (OFDM, 6 Mbps), Channel 149 (5745.000 MHz)

Device Under Test Properties

Model	Dimensions [mm]
Creader Professional 919C LITE V2	144.8 x 246.8 x 36.0

Exposure Conditions

Phantom Section, TSL	Position, Test Distance [mm]	Band	Group, UID	Frequency [MHz], Channel Number	Conversion Factor	TSL Conductivity [S/m]	TSL Permittivity
Flat, HSL	EDGE LEFT, 0.00	U-NII-3 Standalone	WLAN, 10062-CAE	5745.000, 149	4.75	5.35	35.1

Hardware Setup

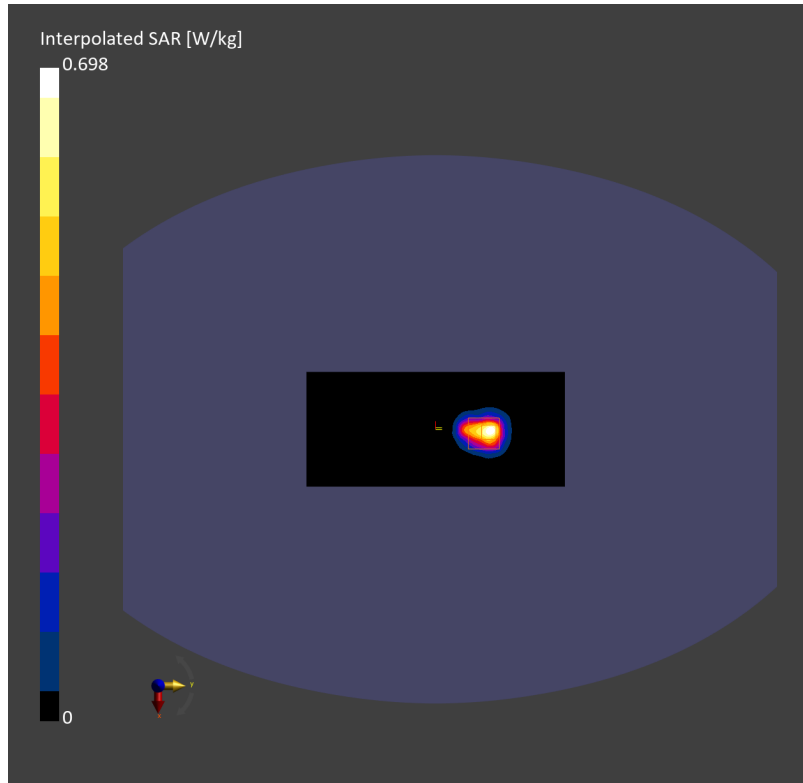
Phantom	TSL	Probe, Calibration Date	DAE, Calibration Date
ELI V8.0 (20deg probe tilt) - 2227	HSL5GHz	EX3DV4 - SN7858, 2025-01-15	DAE4ip Sn1847, 2024-12-31

Scans Setup

	Area Scan	Zoom Scan
Grid Extents [mm]	80.0 x 180.0	24.0 x 24.0 x 22.0
Grid Steps [mm]	10.0 x 10.0	4.0 x 4.0 x 2.0
Sensor Surface [mm]	3.0	1.4
Graded Grid	N/A	Yes
Grading Ratio	N/A	1.4
MAIA	Y	N/A
Surface Detection	VMS + 6p	VMS + 6p
Scan Method	Measured	Measured

Measurement Results

	Area Scan	Zoom Scan
Date	2025-05-18, 12:34	2025-05-18, 12:41
psSAR1g [W/Kg]	0.484	0.469
psSAR10g [W/Kg]	0.161	0.149
Power Drift [dB]	0.02	-0.11
Power Scaling	Disabled	Disabled
Scaling Factor [dB]		
TSL Correction	No correction	No correction
M2/M1 [%]		49.0
Dist 3dB Peak [mm]		7.6



Test Laboratory: TOWE Lab

Measurement Report for Creader Professional 919C LITE V2, EDGE LEFT, ISM 2.4 GHz Band, Bluetooth Low Energy, Channel 19 (2440.000 MHz)

### Device Under Test Properties

Model	Dimensions [mm]
Creader Professional 919C LITE V2	144.8 x 246.8 x 36.0

### Exposure Conditions

Phantom Section, TSL	Position, Test Distance [mm]	Band	Group, UID	Frequency [MHz], Channel Number	Conversion Factor	TSL Conductivity [S/m]	TSL Permittivity
Flat, HSL	EDGE LEFT, 0.00	ISM 2.4 GHz Band	Bluetooth, 10670-AAA	2440.000, 19	7.27	1.82	40.3

### Hardware Setup

Phantom	TSL	Probe, Calibration Date	DAE, Calibration Date
ELI V8.0 (20deg probe tilt) - 2227	HSL2450	EX3DV4 - SN7812, 2024-06-25	DAE4ip Sn1847, 2024-12-31

### Scans Setup

	Area Scan	Zoom Scan
Grid Extents [mm]	72.0 x 144.0	30.0 x 30.0 x 30.0
Grid Steps [mm]	12.0 x 12.0	5.0 x 5.0 x 5.0
Sensor Surface [mm]	3.0	1.4
Graded Grid	N/A	Yes
Grading Ratio	N/A	1.5
MAIA	Y	Y
Surface Detection	VMS + 6p	VMS + 6p
Scan Method	Measured	Measured

### Measurement Results

	Area Scan	Zoom Scan
Date	2025-05-17, 13:31	2025-05-17, 13:36
psSAR1g [W/Kg]	0.092	0.098
psSAR10g [W/Kg]	0.043	0.043
Power Drift [dB]	0.04	0.05
Power Scaling	Disabled	Disabled
Scaling Factor [dB]		
TSL Correction	No correction	No correction
M2/M1 [%]		48.5
Dist 3dB Peak [mm]		9.0

