

Appendix A

System Check 2450 MHz Head
System Check 5200 MHz Head
System Check 5800 MHz Head

System Performance Check Report

Summary

Dipole	Frequency [MHz]	TSL	Power [dBm]	Dev. 1g [%]	Dev. 10g [%]	Dev. Peak [%]	Iso. Error [%]
D2450V2 – SN1099	2450.0	HSL	20.0	2.6	4.5	2.9	-4.9

Exposure Conditions

Phantom Section, TSL	Test Distance [mm]	Band	Group, UID	Frequency [MHz], Channel Number	Conversion Factor	TSL Conductivity [S/m]	TSL Permittivity
Flat, HSL	10		CW, 0--	2450.000, 0	7.27	1.83	40.2

Hardware Setup

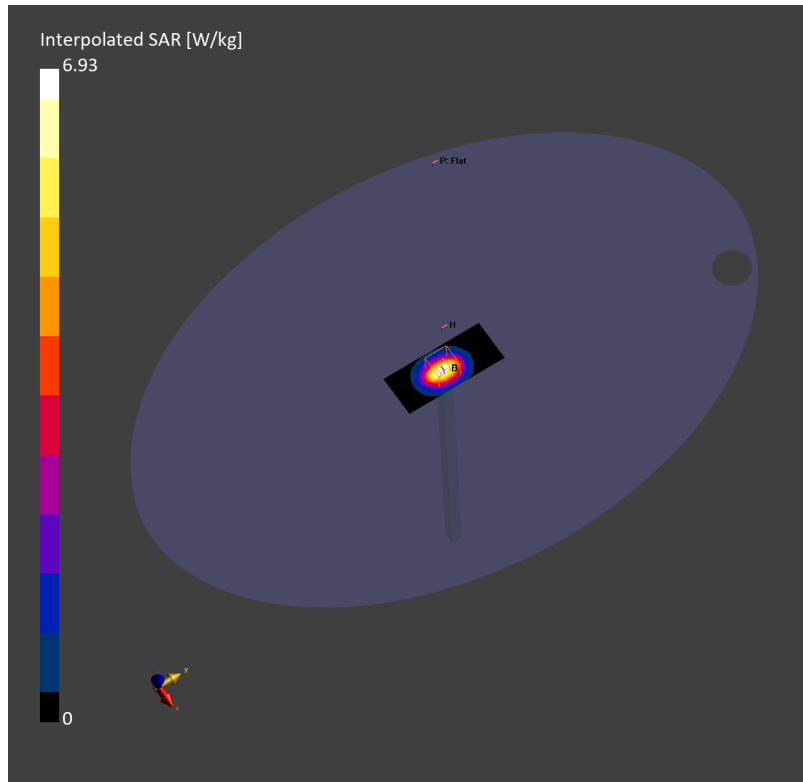
Phantom	TSL	Probe, Calibration Date	DAE, Calibration Date
ELI V8.0 (20deg probe tilt) – 2227	HSL2450	EX3DV4 – SN7812, 2024-06-25	DAE4ip Sn1847, 2024-12-31

Scans Setup

	Area Scan	Zoom Scan
Grid Extents [mm]	40.0 x 96.0	30.0 x 30.0 x 30.0
Grid Steps [mm]	10.0 x 12.0	5.0 x 5.0 x 1.5
Sensor Surface [mm]	3.0	1.4
Graded Grid	N/A	Yes
Grading Ratio	N/A	1.5
MAIA	N/A	N/A
Surface Detection	VMS + 6p	VMS + 6p
Scan Method	Measured	Measured

Measurement Results

	Area Scan	Zoom Scan
Date	2025-05-17, 07:27	2025-05-17, 07:34
psSAR1g [W/Kg]	5.29	5.29
psSAR10g [W/Kg]	2.48	2.50
Power Drift [dB]	-0.01	-0.00
Power Scaling	Disabled	Disabled
Scaling Factor [dB]		
TSL Correction	No correction	No correction



System Performance Check Report

Summary

Dipole	Frequency [MHz]	TSL	Power [dBm]	Dev. 1g [%]	Dev. 10g [%]	Dev. Peak [%]	Iso. Error [%]
D5GHzV2 - SN1371	5200.0	HSL	20.0	-3.6	-0.9	-8.9	1.5

Exposure Conditions

Phantom Section, TSL	Test Distance [mm]	Band	Group, UID	Frequency [MHz], Channel Number	Conversion Factor	TSL Conductivity [S/m]	TSL Permittivity
Flat, HSL	10		CW, 0--	5200.000, 0	5.25	4.67	36.3

Hardware Setup

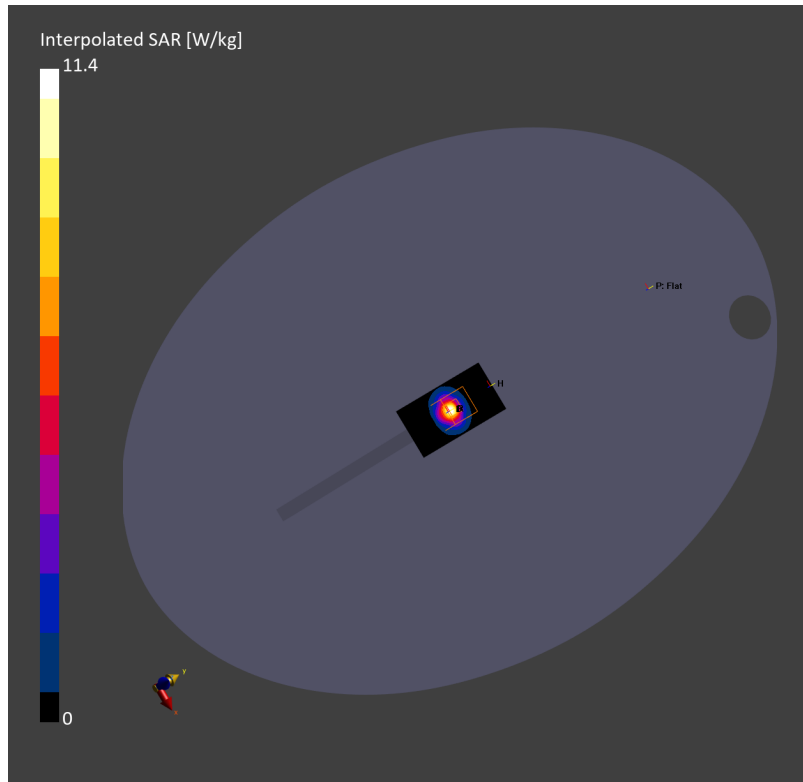
Phantom	TSL	Probe, Calibration Date	DAE, Calibration Date
ELI V8.0 (20deg probe tilt) - 2227	HSL5GHz	EX3DV4 - SN7858, 2025-01-15	DAE4ip Sn1847, 2024-12-31

Scans Setup

	Area Scan	Zoom Scan
Grid Extents [mm]	40.0 x 80.0	24.0 x 24.0 x 22.0
Grid Steps [mm]	10.0 x 10.0	4.0 x 4.0 x 1.4
Sensor Surface [mm]	3.0	1.4
Graded Grid	N/A	Yes
Grading Ratio	N/A	1.4
MAIA	N/A	N/A
Surface Detection	VMS + 6p	VMS + 6p
Scan Method	Measured	Measured

Measurement Results

	Area Scan	Zoom Scan
Date	2025-05-18, 07:02	2025-05-18, 07:08
psSAR1g [W/Kg]	7.19	7.59
psSAR10g [W/Kg]	2.06	2.21
Power Drift [dB]	-0.02	0.01
Power Scaling	Disabled	Disabled
Scaling Factor [dB]		
TSL Correction	No correction	No correction



System Performance Check Report

Summary

Dipole	Frequency [MHz]	TSL	Power [dBm]	Dev. 1g [%]	Dev. 10g [%]	Dev. Peak [%]	Iso. Error [%]
D5GHzV2 - SN1371	5800.0	HSL	20.0	5.7	7.0	4.3	1.5

Exposure Conditions

Phantom Section, TSL	Test Distance [mm]	Band	Group, UID	Frequency [MHz], Channel Number	Conversion Factor	TSL Conductivity [S/m]	TSL Permittivity
Flat, HSL	10		CW, 0--	5800.000, 0	4.75	5.31	35.2

Hardware Setup

Phantom	TSL	Probe, Calibration Date	DAE, Calibration Date
ELI V8.0 (20deg probe tilt) - 2227	HSL5GHz	EX3DV4 - SN7858, 2025-01-15	DAE4ip Sn1847, 2024-12-31

Scans Setup

	Area Scan	Zoom Scan
Grid Extents [mm]	40.0 x 80.0	24.0 x 24.0 x 22.0
Grid Steps [mm]	10.0 x 10.0	4.0 x 4.0 x 1.4
Sensor Surface [mm]	3.0	1.4
Graded Grid	N/A	Yes
Grading Ratio	N/A	1.4
MAIA	N/A	N/A
Surface Detection	VMS + 6p	VMS + 6p
Scan Method	Measured	Measured

Measurement Results

	Area Scan	Zoom Scan
Date	2025-05-18, 07:53	2025-05-18, 08:01
psSAR1g [W/Kg]	8.56	8.43
psSAR10g [W/Kg]	2.41	2.40
Power Drift [dB]	-0.01	0.01
Power Scaling	Disabled	Disabled
Scaling Factor [dB]		
TSL Correction	No correction	No correction

