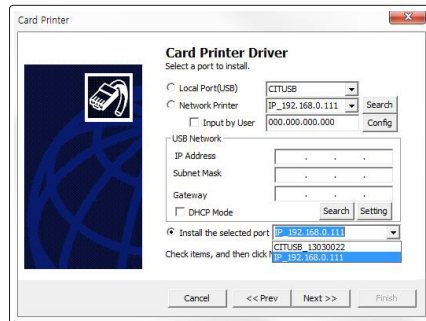
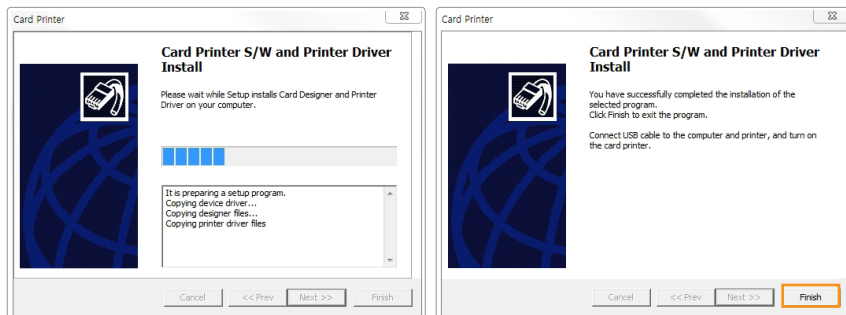


5. Select **"Install the Selected port"** and it displays the printers that can be connected to a PC. Printers on other networks are not included in the list. Click **"Next"** to proceed.



6. Click **"Finish"** to complete the installation process.



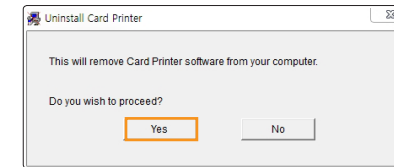
7. Make sure that the selected items are installed.

For "Card Designer Software", check  
**"Start → All Programs → POINTMAN → Card Designer"**

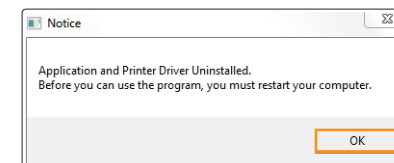
For "Card Printer Driver", check:  
**"Start → All Programs → POINTMAN → Printer"**  
 Go to "Devices and Printers" and make sure "Card Printer" has been installed.

## Uninstall Program

1. Select **"Start → All Programs → POINTMAN → Uninstall"** and click **"Yes"**.



2. When the program is removed, click **"OK"**.  
 (Restart your computer after uninstalling the program.)

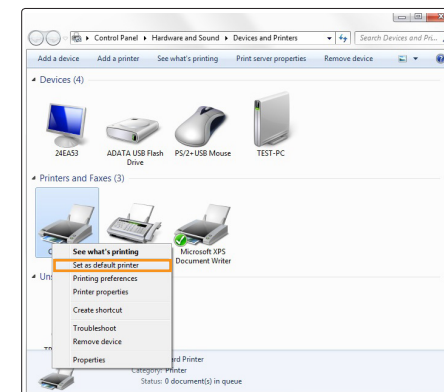


## Print Cards

### -Set as Default Printer

You can change the printer settings using the functions provided by the printer driver.

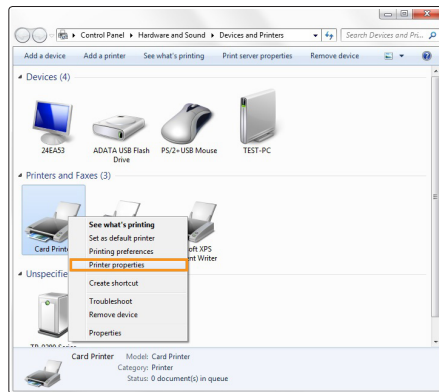
1. Go to **"Hardware and Sound → Devices and Printers"** in the **"Control Panel"**.
2. Right-click **"Card Printer"** and select **"Set as default printer"**.



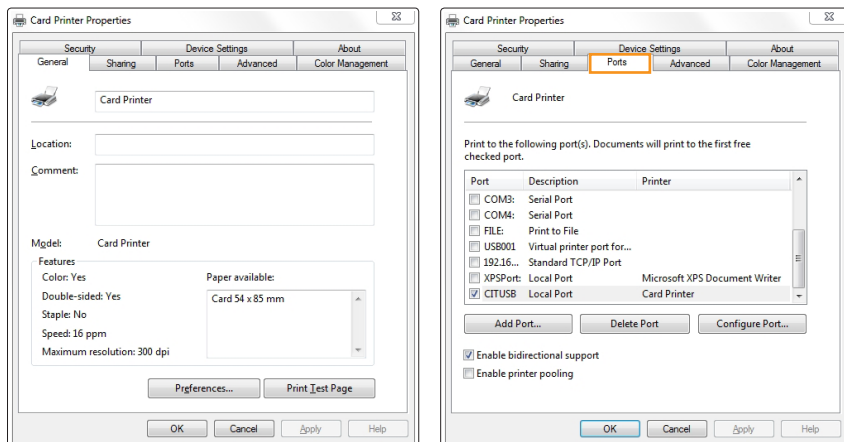
**Note** Use this printer settings when there are no other printers connected to your PC.

## -Change Printer Port (Using the Printer Driver)

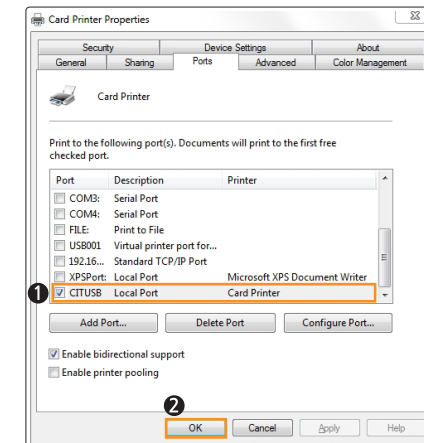
1. Go to “Hardware and Sound → Devices and Printers” in the “Control Panel”.
2. Right-click “Card Printer” and select “Properties (or Printer Properties)”.



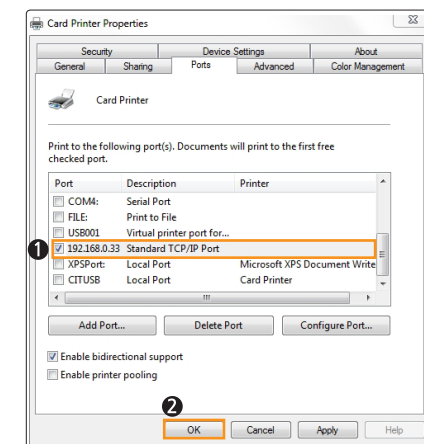
3. Select “Ports (or Advanced)” tab in the “Card Printer Properties”.



4. Select the port you want to use and click “OK”.
- USB Port: CITUSB (Local Port)



Network Port: Refer to “Configure Network Settings” (P36) and select the port (IP address) accordingly.

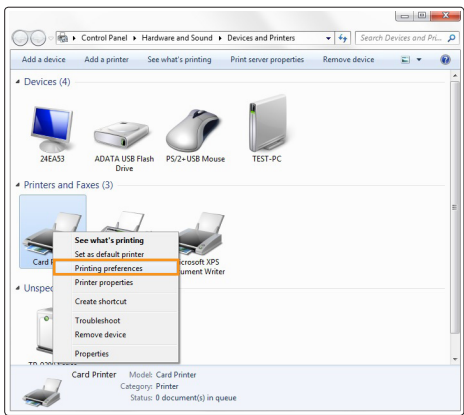


### Note

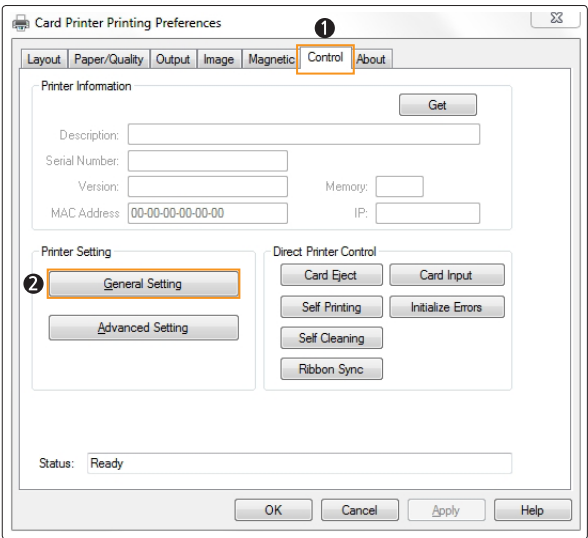
When the driver is installed successfully, “Two-Way Communication” will be selected automatically. If there is any problem printing through the network port, make sure to disable “Two-Way Communication”.

-Select Input Hopper in the Printer Settings

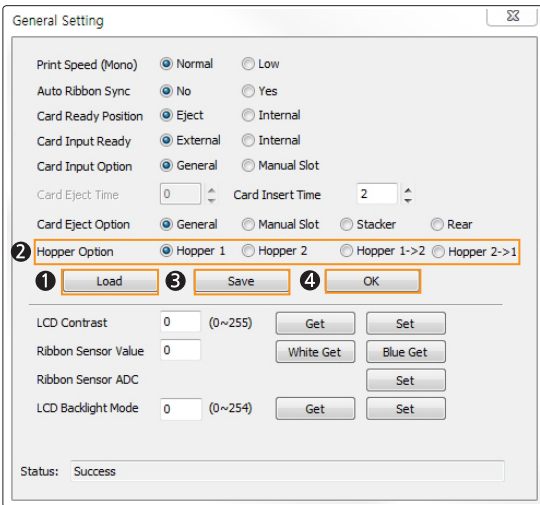
- 1. Go to “Hardware and Sound → Devices and Printers” in the “Control Panel”.
- 2. Right-click “Card Printer” and select “Printing Preferences”.



- 3. Go to “Printer Setting → General Setting” in the “Control” tab.



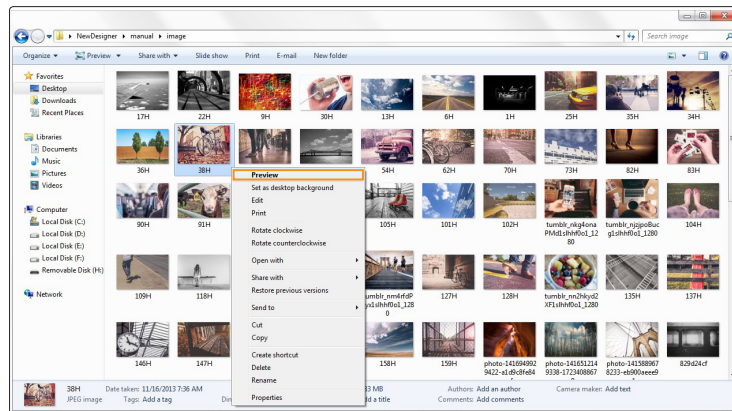
- 3. Make sure that the printer is on, and click “Load” to activate the Input Hopper Option.
- 4. Select “Hopper Option” and click “Save” to save the new settings.
- 5. Click “OK” to close the General Setting tab.



Item		Description
Load		Load the General Settings of the printer.
Hopper Option	Hopper 1	Feed cards only from the upper Input Hopper.
	Hopper 2	Feed cards only from the lower Input Hopper.
	Hopper 1→2	Feed cards from the upper Input Hopper first and when it is empty, the printer feeds cards from the lower Input Hopper.
	Hopper 2→1	Feed cards from the lower Input Hopper first and when it is empty, the printer feeds cards from the upper Input Hopper.
Save		Save the General Settings of the printer.
OK		Close the General Settings window.

## - Select Input Hopper 1/2 from External Program (Windows Preview)

1. Right-click the image you want to print and select "Preview".

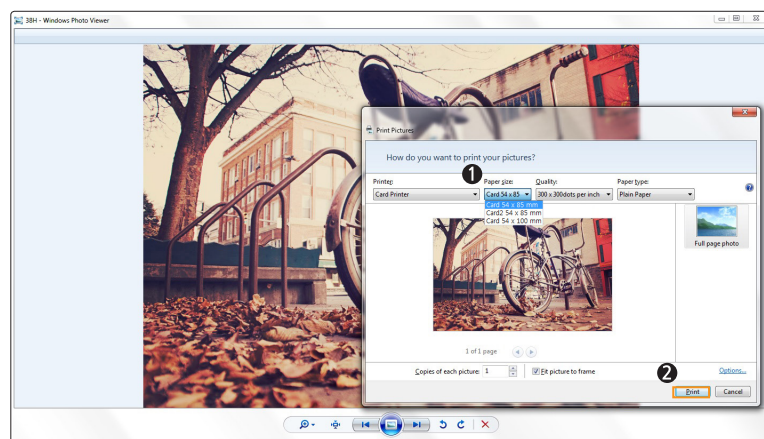


2. Select "Print" on the Windows Photo Viewer to open the print window. Make sure that the card printer is selected and specify the Input Hopper using the paper size menu.

Card 54x85mm → Feed the cards from the upper Input Hopper.

Card2 54x85mm → Feed the cards from the lower Input Hopper.

After specifying the Input Hopper, click "Print" to start printing.



# Print Using Application Programs & Configure Driver Settings

## -Print Using Application Programs

1. Specify the paper as 53.98mm x 85.60mm to print cards using application programs e.g. Excel, Word.

2. Click "Print" in the "Application Program - File" menu to open the print settings. Select "Card Printer" in the settings and click "Print" or "OK" to print.

Make sure that the orientation of the image matches the print settings. You can use the preview option to confirm the print output.



Note

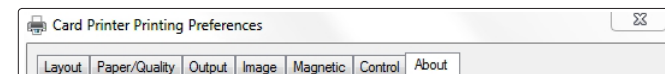
- You can cancel print jobs from either the application program or print spooler.
- If the card is jammed while printing, then press the "EJECT" button in the front side of the printer.

## -Configure Printer Default Settings in Application Programs

Each time you change the print settings in the application program, it will be reset to the default settings when you exit the program.

Click "Print" in the "File" menu to open the print settings.

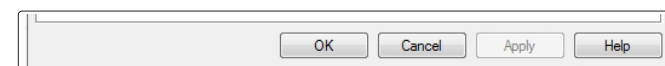
Go to "Printer Properties → Card Printer Printing Properties" in the printer section and change the settings in the "Layout, Output, Image, Magnetic, Control, and About" tabs. (Click each tab to open the settings.)



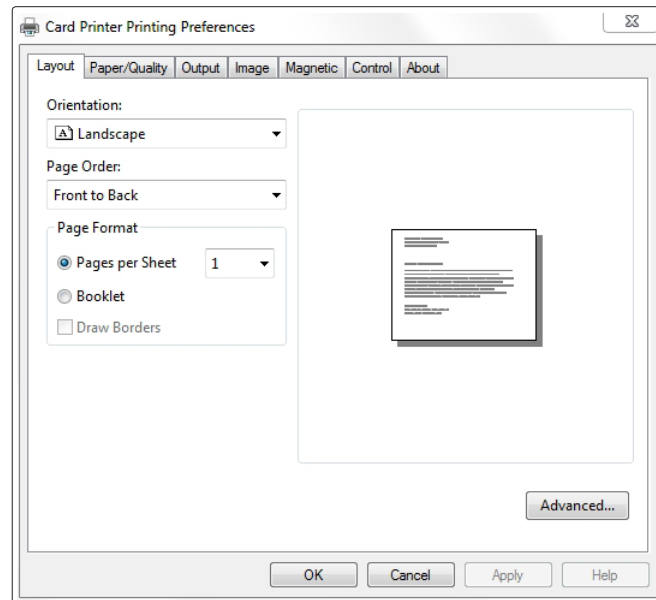
Caution

The card printer does not use the "Paper/Quality" tab in the Card Printer Document Properties.

Click "OK" to complete the process.

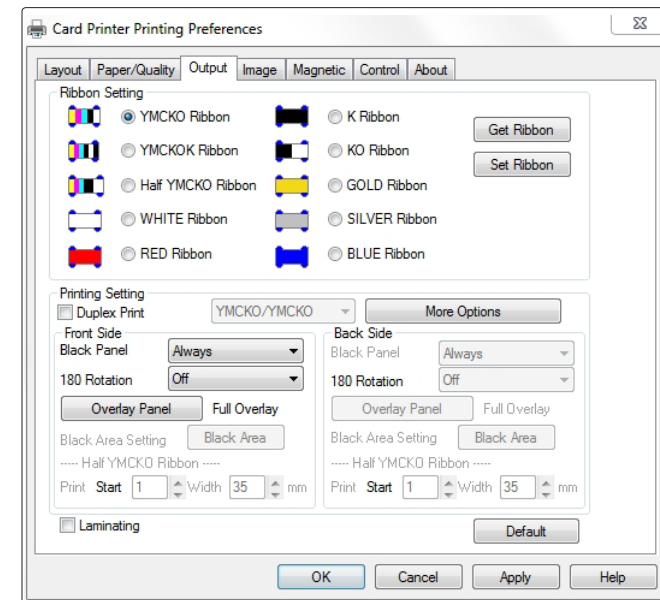


## ① Layout



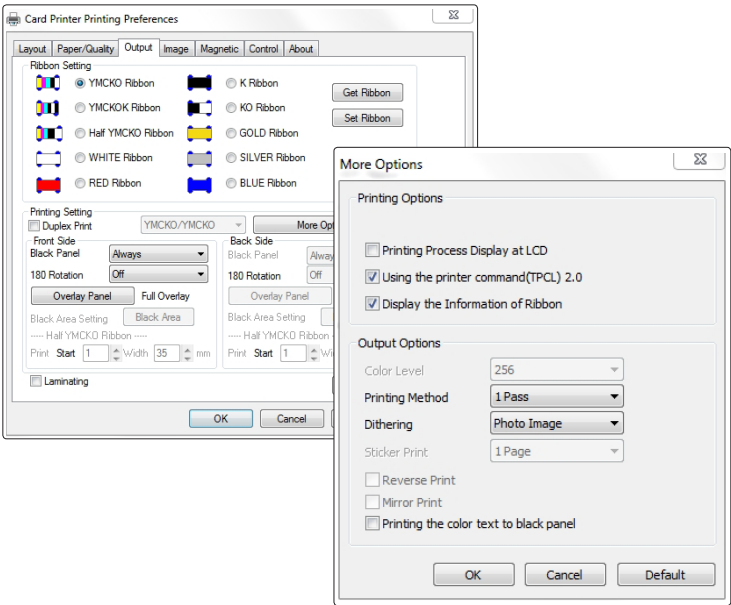
Item	Description
Orientation	Sets the card orientation (Landscape, Portrait)
Page Order	Sets the order for printing pages.
Page Format	This option is not used by a card printer.

## ② Output



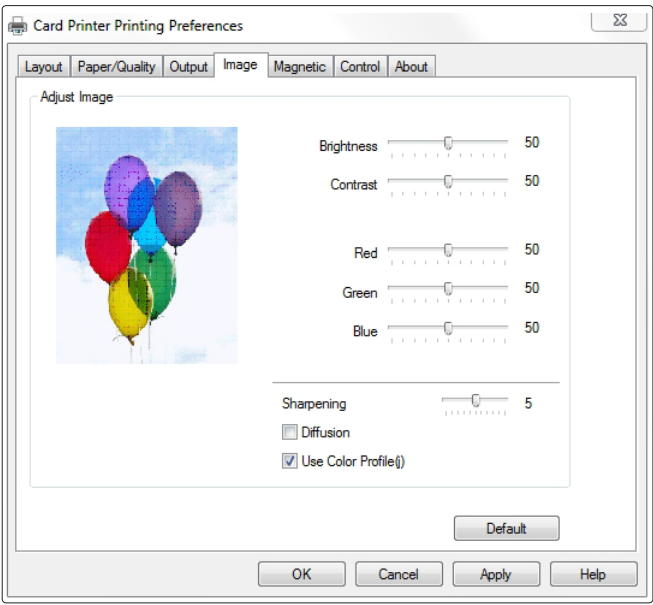
Item		Description
Ribbon Setting		Sets the type of ribbon.
Printer Setting	Duplex Print	Prints on both sides of the card.
	Black Panel	Selects the K panel for printing black text and black & white images included in the document.
	180 Rotation	Rotates the document 180 degrees.
	Overlay Panel	Sets the type of overlay panel for protecting the printed card. -Full Overlay /No Overlay /Selected Area /Use Image File -Smart Card ISO /Smart Card AFNOR /Magnetic Card
Using the printer command (TPCL) 2.0		Check the box for more stability when using NUVIA series -NX0.

③ Output-Option



Item		Description
Printing Options	Printing Process Display at LCD	Printing Process Display on LCD
	Display the information of ribbon	Displays residual count of ribbons. This information is only available for ribbons with an RFID tag, and the value is 40 or less.
Output Options	Color Level	Sets the number colors used for printing.
	Printing Method	Sets the print mode for ribbon's movement while printing. 1-pass: All YMCKO data is transmitted before printing. 3-pass: All YMCKO data is transmitted, and the transmitted ribbon is printed.
	Dithering	Dithering only applies to the data transmitted to the black panel of the ribbon.
	Reverse Print	Reverses the document.
	Mirror Print	Print a mirror image of the document (flipping the image horizontally).
	Printing the color text to black ribbon(K)	Prints any color text in black.

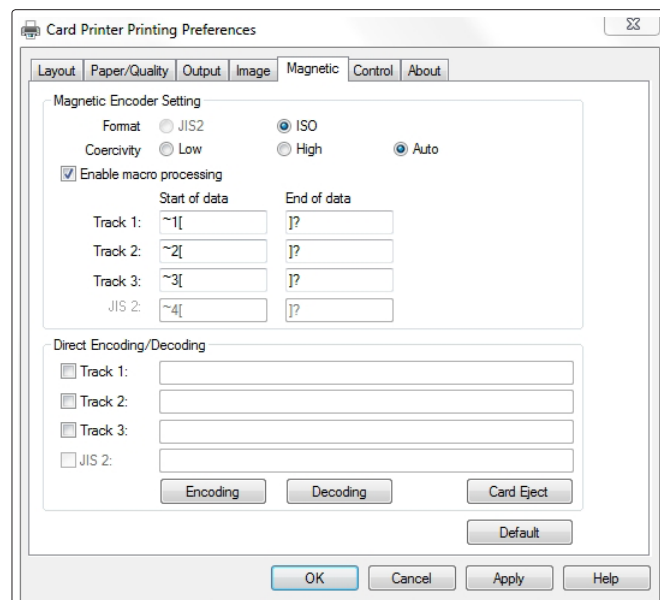
④ Image



Item		Description
Adjust Image	Brightness	Sets the brightness of the printed card.
	Contrast	Sets dark areas as darker and bright areas as brighter.
	Sharpening	Increases the contrast of adjacent pixels to make the image look sharper.. This filter adjusts the contrast of the edge details and creates brighter and darker lines on each plane of the edge, resulting in a sharper image with clearer outlines.
	Diffusion	Mixes the pixels of an image and makes it look blurry.
	Use Color Profile	Supports more colors by using the color profile.

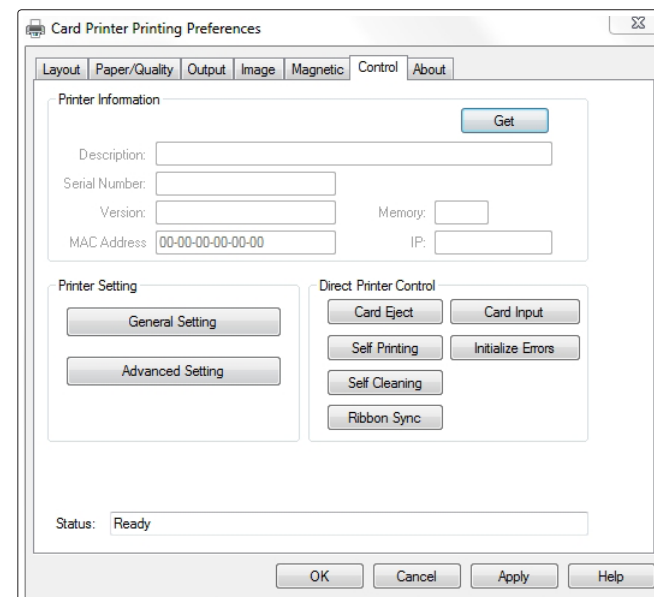


## ⑤ Magnetic



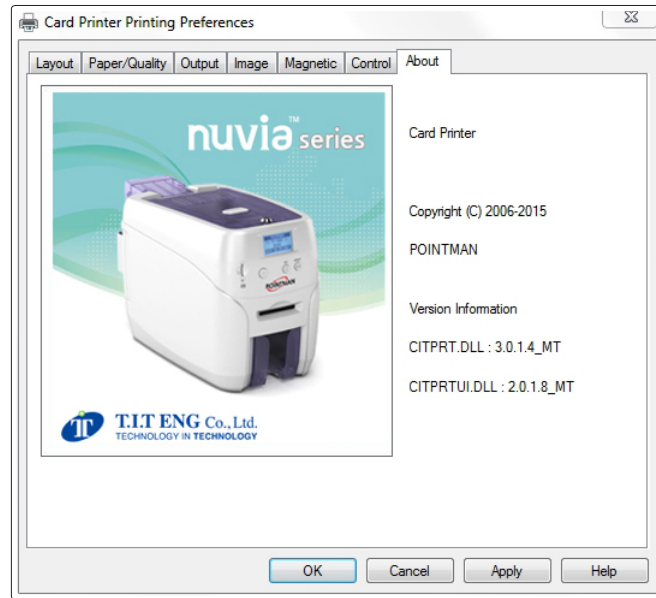
Item		Description
Magnetic Encoder Settings	Format	Sets the encoder format of the magnetic stripe.
	Coercivity	Sets the coercivity type of magnetic stripe.
	Enable macro processing	Sends data to the magnetic stripe. When enabled, it detects the start and end of the encoding data from text format and processes it with Magnetic Stripe Encoding data.
Direct Encoding /Decoding	Encoding	Writes the data of selected track to the magnetic stripe. Track 1, 2, 3: Inputs the data to write on the magnetic stripe card.
	Decoding	Reads the data of the selected track from the magnetic stripe. Track 1, 2, 3: Displays the data read from the magnetic stripe card.
	Card Eject	Ejects any card inside the printer.

## ⑥ Control



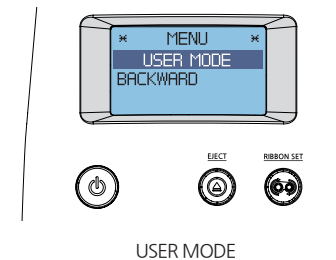
Item		Description
Printer Information	Get	Retrieves and displays the information from the printer.
Printer Setting	General Setting	Retrieves/changes the printer settings. - Print Speed (Mono): Normal, Low - Auto Ribbon Sync: No, Yes - Card Ready Position: Eject, Internal - Card Input Option: External, Internal - Card Eject Time: 0 - 30 seconds - Card Insert Time: 2 - 20 seconds
	Advanced Setting	Retrieves/changes the printer settings. -TPH Resistance: 2400 ~ 3600 -TPH Model: KEE, KPE, KPE2 - Card Margin Setting: X-Start, X-End, Y-Offset - Intensity: Color/Mono Ribbon
Direct Printer Control	Card Eject	Ejects the card inside the printer.
	Card Input	Inserts the card placed in the slot.
	Self Printing	Prints a self-test card.
	Self Cleaning	Initializes the cleaning cycle. Make sure that the cleaning
	Ribbon Sync	Synchronizes the ribbon. It performs the same function as the "RIBBON SET" button.
	Initialize Errors	Removes the error status of the printer. This does not solve any errors, but only removes the status so it can process the next command.

## ⑦ About

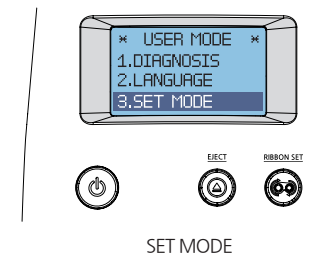


This tab displays the version information.

2. When “USER MODE” is indicated in the LCD display, hold “RIBBON SET” button.



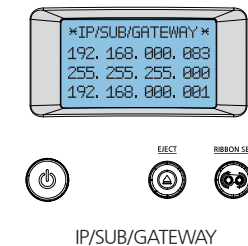
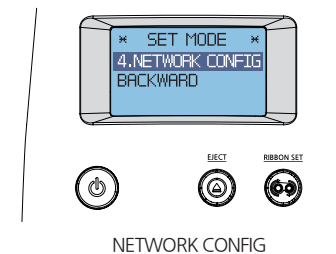
3. When “USER MODE” is indicated in the LCD display, press the “RIBBON SET” button to go into “3. SET MODE”. Then, hold down the “RIBBON SET” button.



Check

Go up the menu: Press the “EJECT” button.  
Go down the menu: Press the “RIBBON SET” button.

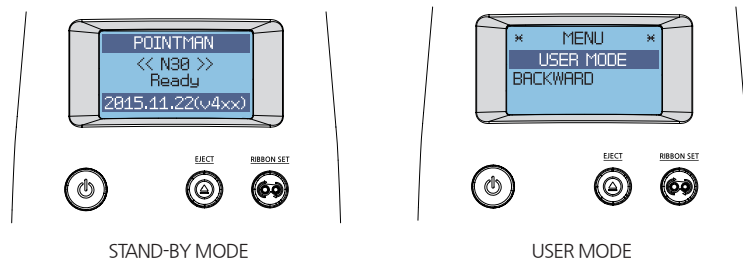
4. When “SET MODE” is indicated in the LCD display, press the “RIBBON SET” button several times to go to “4. NETWORK CONFIG”. Then, hold down the “RIBBON SET” button until the IP address displays on the screen.



# Check IP Address & Print Test Card

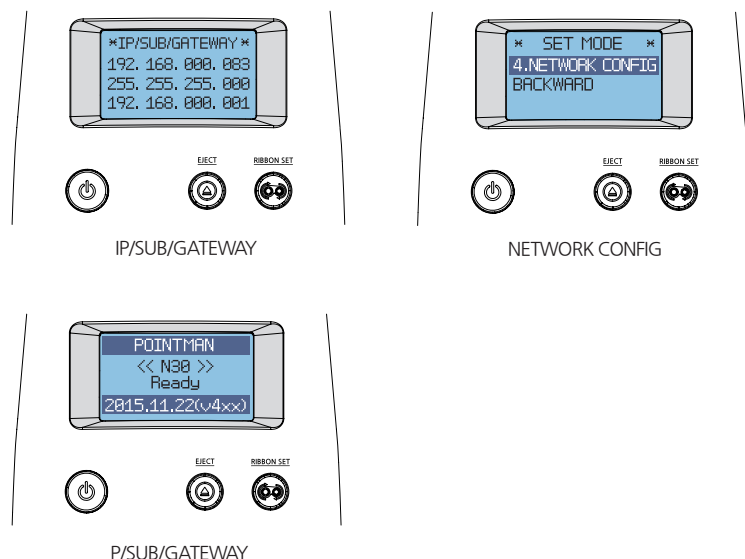
## -Check IP Address

1. Hold down both the “EJECT” and “RIBBON SET” buttons until “USER MODE” is indicated in the LCD display.

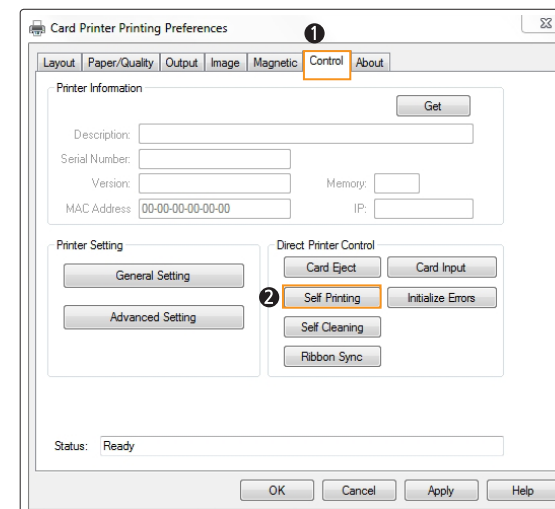




5. To go into STAND-BY mode, hold down both the “EJECT” and “RIBBON SET” buttons to go to the previous menu (“4. NETWORK CONFIG”). Then, hold down the “EJECT” button to enter **STAND-BY mode**.



5. Click “Card Printer Document Properties → Control tab → Direct Printer Control → Self Printing”.

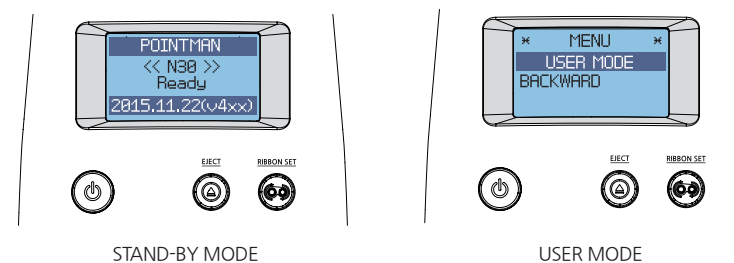


6. “Self Printing” is indicated on the LCD display as a test card is printed so that you can check the printing quality.

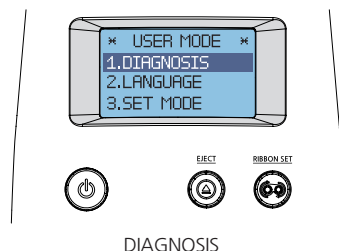
## -Print Self-Test Card

### ① If Connected to a PC

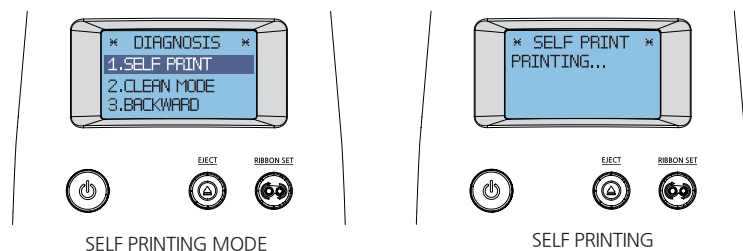
1. Turn on the printer connected to a PC.
2. Load the ribbon and press the “RIBBON SET” button.
3. Insert a single card into the slot or load it on the Input Hopper.



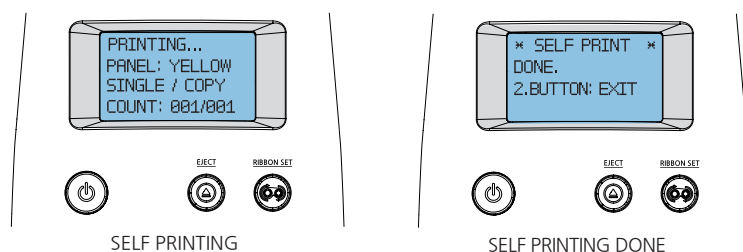
4. Hold down the "RIBBON SET" button in the USER MODE, and go into the "1. DIAGNOSIS" menu.



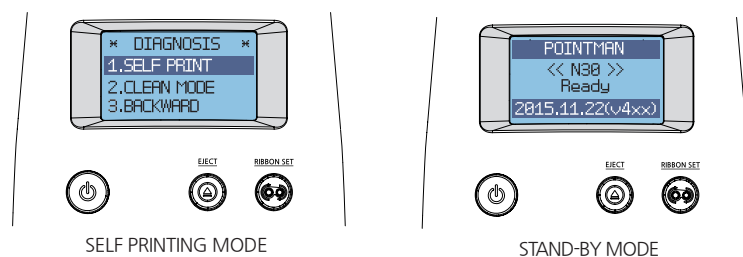
5. Hold down the "RIBBON SET" button in the "DIAGNOSIS → 1. SELF PRINT" menu to start printing a test card.



6. The printing progress is indicated on the LCD display. The card will be ejected when the printing is completed.



7. When the "SELF PRINTING DONE" message displays, hold down both the "EJECT" and "RIBBON SET" buttons to go back to the "DIAGNOSIS-SELF PRINT MODE". To go into STAND-BY mode, hold down the "EJECT" button.



## Maintenance Instructions

### -Supported Cards

This card printer may not support certain types of PVC cards. Please use the following PVC cards to prevent any issues and achieve the highest printing quality.

#### ① Size

- International Standard (ISO CR80-ISO7810)
- 53.98mm (W) x 85.60mm (L)/3.375"x2.215"

#### ② Thickness

- Minimum: 0.4mm
- Standard: 0.76mm
- Maximum: 1.2mm

#### ③ Acceptable Cards

- Glossy white
- Free of dirt or grease
- Not contaminated
- Free of scratches or dents
- Completely flat

#### ④ Unacceptable Cards

- Heavily damaged
- Stained or contaminated
- Scratched
- Bent or deformed
- Embossed



Caution

Do not load or use cards considered as unacceptable as they may damage the parts including the head, sensor, TPH, and roller.

## Clean the Printer

### -Clean the Exterior

- Clean the printer with a soft, damp cloth. Make sure to unplug the power adapter before cleaning it.
- Do not allow any liquid to drip inside the printer.
- Make sure that the printer is dry before turning it on.



Caution

Do not use any surfactant containing a high content of alcohol or solvent to clean the printer as it may cause discoloration or fissure on its surface.

## -Clean Inside the Printer Using Cleaning Kit

Clean inside the printer using the cleaning kit every month or every 1000 cards

Make sure to follow the instructions provided below on a regular basis as dusts or contaminants may affect the printing quality or damage the parts.

### ① Cleaning Kit & Use



#### 1) CR80 Cleaning Card:

Use for cleaning the printer path, roller, and feeding roller.



#### 2) T Cleaning Card:

Use for cleaning the printer path, roller, and feeding roller.



#### 3) Alcohol Swab:

Use for cleaning the interior case and sensor.



#### 4) Cleaning Pen:

Use for cleaning the TPH and sensor.

### ② Clean the Printer Using CR80 Cleaning Card / T Cleaning Card



CR80 Cleaning Card : insert the card to the Single Card Slot.

T Cleaning Card : remove the Input Hopper and insert the card through the tray.

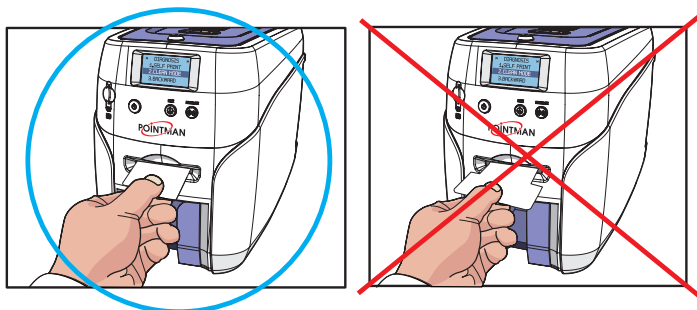
#### Caution

Using the cards in any other way may cause an error.

#### 1) Check the Proper Use of CR80 Cleaning Card/T Cleaning Card

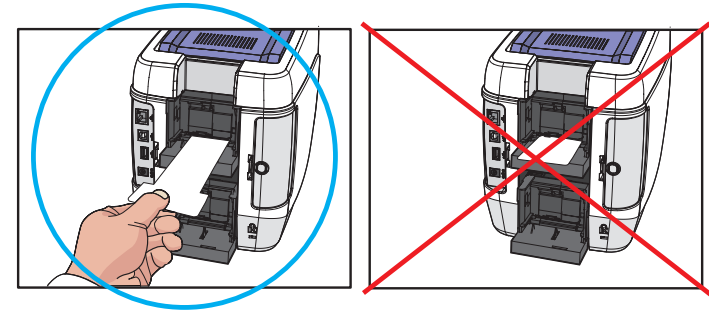
##### CR80 Cleaning Card

Insert the CR80 Cleaning Card to the Single Card Slot as shown in the picture.



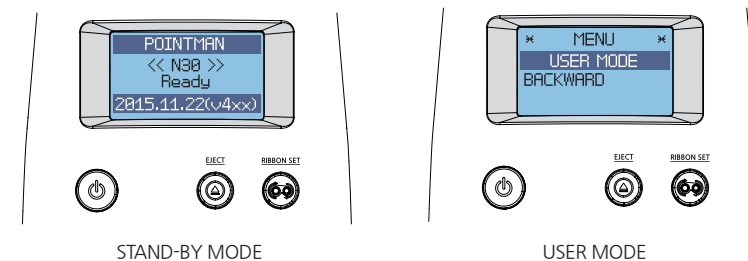
##### T Cleaning Card

Insert one third of the T Cleaning Card to the card tray as shown in the picture.  
(Make sure to remove the Input Hopper before inserting it.)

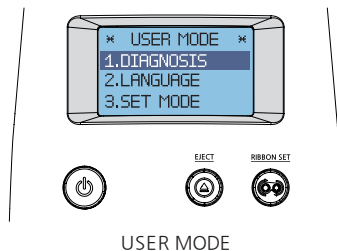


#### 2) Not Connected to a PC: User Mode

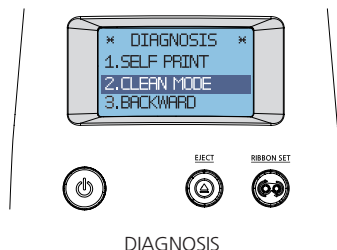
1. Open the Top Cover and remove the ribbon.
2. Press the “EJECT” button located in front of the printer to eject any card inside the Single Card Slot. For the cards in the Input Hopper, open the cover to remove them.
3. Insert the cleaning card to the feeding slot  
(Single Card Slot, Input Hopper).
4. Hold down both the “EJECT” and “RIBBON SET” buttons until the LCD display indicates that the printer is in “USER MODE”.



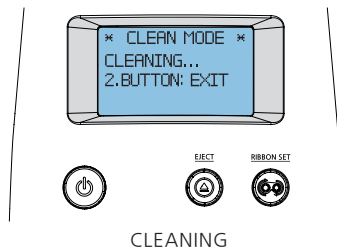
4. Hold down the “**RIBBON SET**” button in the “**USER MODE**” to go into “**1. DIAGNOSIS**”.



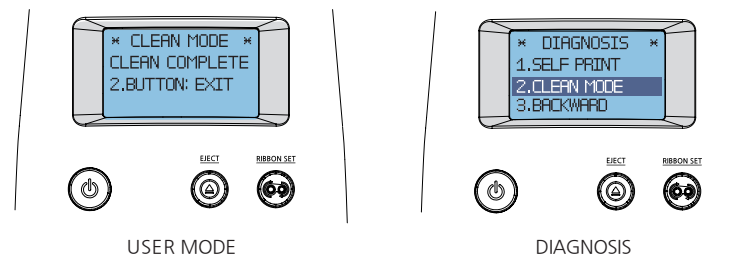
5. When the LCD display indicates “**1. DIAGNOSIS**”, press the “**RIBBON SET**” button to go into “**2. CLEAN MODE**”.



6. Hold down the “**RIBBON SET**” button until cleaning starts. The cleaning card will be ejected after it moves back and forth 10 times.

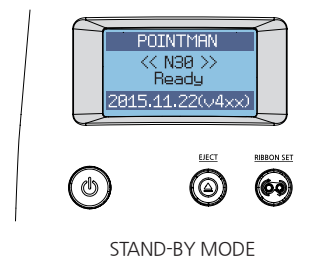


7. When the LCD display indicates “**CLEAN COMPLETE**”, removes the cleaning card. Then, press both the “**EJECT**” and “**RIBBON SET**” buttons to go back to the “**DIAGNOSIS**” menu.



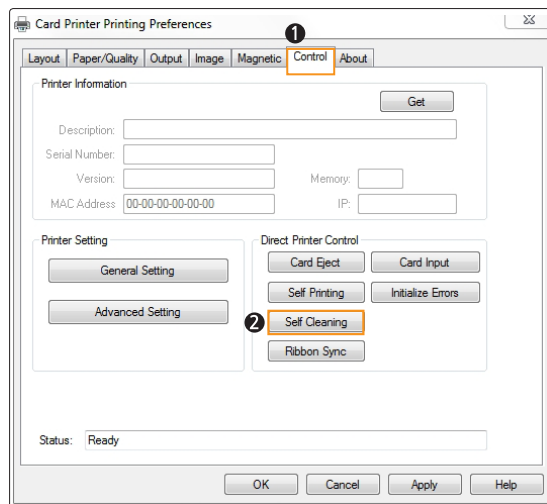
**Caution** Do not use the printer for 2-3 minutes until the alcohol solution is fully dried.

8. Hold down the “**EJECT**” button to go into **Stand-by Mode**.

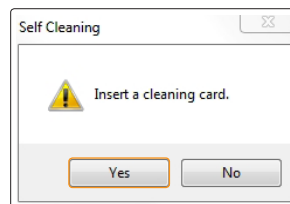


### 3) Connected to a PC

1. Turn off the printer and remove the card and ribbon. Then, close the cover and turn it on.
2. Go to **"Control Panel → Hardware and Sound → Devices and Printers"** and right-click the "Card Printer" driver icon. Then, select "Printing preferences".
3. Go to **"Card Printer Printing preferences → Control"** and click **"Self-Cleaning"**.



4. Insert a cleaning card when prompted by the **"Insert a cleaning card"** message, and then click **"Yes"**.



5. The cleaning card will be ejected after it moves back and forth 10 times.
6. Do not use the printer for 2-3 minutes until the alcohol solution is fully dried.

### ③ Clean the Printer Using Alcohol Swab and Cleaning Pen

You can clean the printer's TPH and sensor and wipe the ink and dusts using an alcohol swab and cleaning pen.

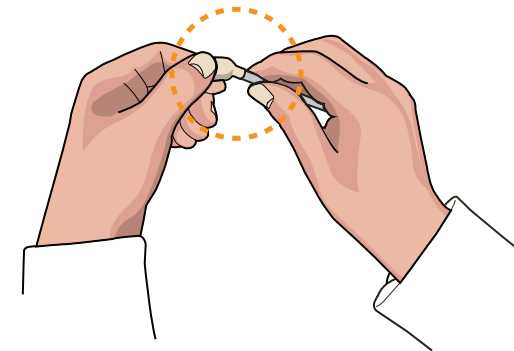


Caution

Do not use any surfactant containing a high content of alcohol or solvent to clean the printer as it may cause discoloration or fissure on its surface. Make sure to use authorized alcohol swabs and cleaning pen only.

#### 1) Clean the Inside of the Printer Using Alcohol Swab

1. Turn off the printer connected to a PC, and unplug the power adapter.
2. Open the Top Cover and remove the ribbon. Press the **"EJECT"** button located in front of the printer to eject any card inside the printer. .
3. Take out an alcohol swab from the Cleaning Kit and fold it at the end as shown in the picture.



4. Squeeze the transparent part until liquid comes out. Then, clean places in the printer where you cannot reach it with your hands.



Caution

Do not use the printer for 2-3 minutes until the alcohol solution is fully dried.

## 2) Clean the Printer's TPH Using Cleaning Pen and Alcohol Swab

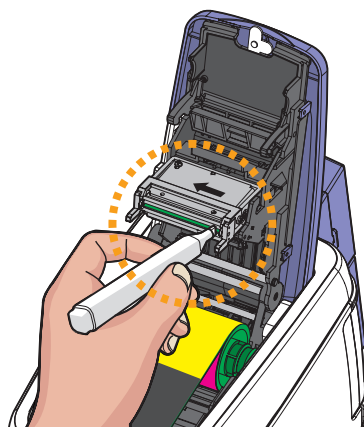
It is recommended to clean the printer at least once a month or whenever you replace the ribbon.

1. Turn off the printer connected to a PC and unplug the power adapter.
2. Clean the main body of the TPH using the cleaning pen or cotton swab before cleaning its head.
3. Make sure to clean under the two green wires using the cleaning pen as shown in the picture.



### Caution

Do not touch the TPH head with your hands as this can damage it.

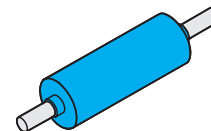


4. Make sure that the TPH is fully dried before turning the printer on; otherwise, the TPH may get damaged.



**Important** The Cleaning Pen is only included in the Advanced set sold by Pointman.

## -Clean the Cleaning Roller



### Cleaning Roller

This cleaning tool is designed to remove any unwanted materials from the surfaces of cards, and it can be used semi-permanently since it can be washed. It is recommended to clean it at least once every two weeks or every 200 times the printer prints a card (i.e. after 400 cards a month).

1. Remove the cleaning roller from the printer.
2. Wash it under running water.
3. Make sure that it is fully dried before installing it into the printer.

## Troubleshooting

Some of the problems you may encounter while using the printer can be fixed by referring to the following troubleshooting guide. If the problem persists, then please contact your local dealer.

### -Errors

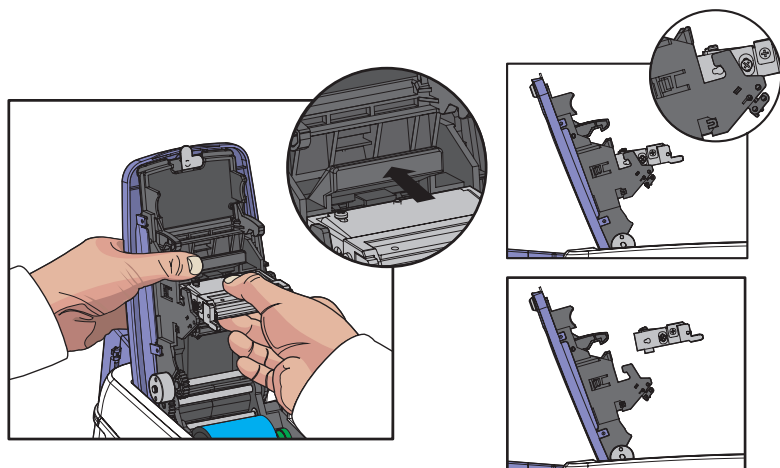
#### ① TPH

Code	Code Name	Description	Solution
10	Top Cover (TPH Module)	Top Cover (TPH Module)	Check that the cover is closed properly. Replace the TPH open checking sensor.
11	TPH Up/Down Failure	The TPH up/down movement fails or is interrupted.	Check the TPH up/down module.
13	Abnormal TPH Thermistor Temperature	The TPH thermistor Temperature is abnormal.	Check the temperature of the TPH thermistor (operating temp.: 0c°~70c°). Replace the TPH.

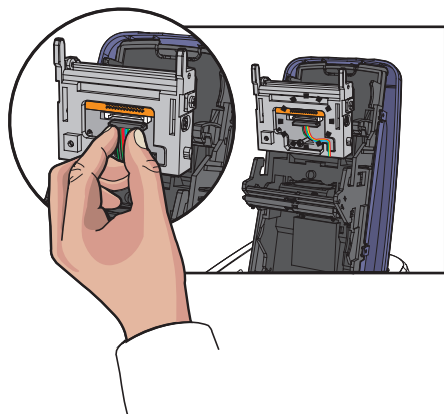


## 1) Replace the TPH

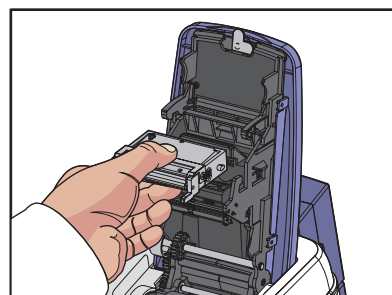
1. While pressing down the Top Cover and the TPH hold button with one hand, pull the TPH by its body upward while pushing it inside.



2. Remove the TPH's connector by lifting it.



3. Pull it towards you to remove, and then replace it with a new one. (Install the TPH in reverse order of the removal steps.)

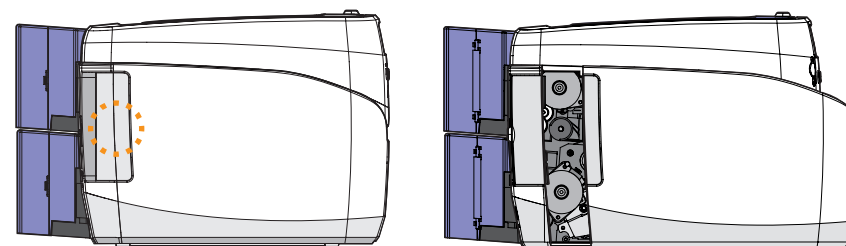


## ② Card Feeding

Code	Code Name	Description	Solution
12	Card Jammed	The card is jammed in the path.	Check the path to see if the card is jammed.

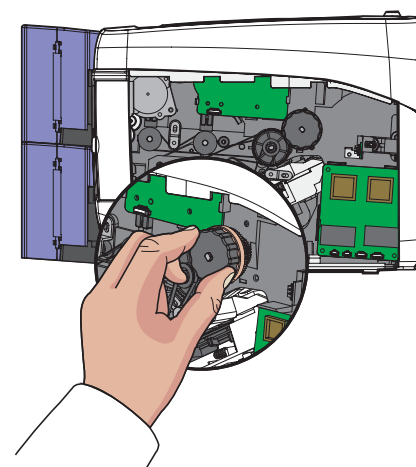
### 1) Remove Jammed Card

1. Open the side cover by holding the area highlighted by the circle and pushing it towards the front of the printer as shown in the picture.



2. Rotate the knob to remove any jammed paper inside the path as shown in the picture.

This method can only be used for single-sided printing models (without the changer) only.



### ③ Ribbon

Code	Code Name	Description	Solution
14	Ribbon Encoder Error	Disconnected ribbon, Ribbon end or encoder error occurs.	Check the Ribbon and Ribbon encoder status.

### ④ Card

Code	Code Name	Description	Solution
17	IC Module Up/Down Error	IC Content module position error occurs.	Repair service is required.
50	[Changer] Module Response Timeout	Changer communication error occurs.	Turn off → Remove any cards → Reboot
51	[Changer] Module Transmission Timeout	Changer communication error occurs.	Turn off → Remove any cards → Reboot
52	[Changer] Home Position Failure	An error occurs at the Changer home position.	Turn off → Remove any cards → Reboot
53	[Changer] Card Flipper Failure	An error occurs at the Changer turn up.	Turn off → Remove any cards → Reboot
54	[Changer] Card Input Timeout	The printer stops when the card is entering the Changer.	Turn off → Remove any cards → Reboot
55	[Changer] Card Input Jam	The card fails to enter the Changer on time.	Turn off → Remove any cards → Reboot
56	[Changer] Card Output Jam	A card is jammed in the Changer.	Turn off → Remove any cards → Reboot
57	[Changer] Card Exist	An abnormal card is found in the Changer.	Turn off → Remove any cards → Reboot

### ⑤ Miscellaneous

Code	Code Name	Description	Solution
15	Media Error	The media error occurs.	Check the card (media) and path sensor status.
16	EEPROM Error	An EEPROM read/write error occurs.	Reboot or replace the EEPROM.

## -Warning

### ① Card

Code	Code Name	Description	Solution
23	[IC] Contact Error	IC fails to make contact.	Check the IC contact module.
24	[MS] Encoder Error	An MS encoding error occurs.	Check the MS module.
25	[MS] Read Error	All 3 MS tracks fail to read.	Check the MS module.
26	[MS] Read STX Error	No STX is found in the MS reading.	Check the MS feeding.
27	[MS] Read Parity Error	A parity error occurs in the MS reading.	Check the MS feeding
28	[MS] Read ETX Error	No ETX is found in the MS reading.	Check the MS feeding.
29	[MS] Read LRC Error	LRC is inconsistent in the MS reading.	Check the MS feeding and replace the MS card.
30	IC Module Response Timeout	IC module communication fails.	Check the IFM B/D.
31	RF Module Response Timeout	RF module communication fails.	Check the IFM B/D.
33	Card Eject Error	Changer module communication fails.	Check the Flipper and Flipper B/D.
34	Card Input Timeout	The card input is interrupted.	Check the Input Hopper and for any jammed cards.

### ② Ribbon

Code	Code Name	Description	Solution
35	Ribbon Life Low	The ribbon life is reduced to 10% or less.	Prepare to replace the ribbon.
36	No Ribbon Life	The ribbon is fully consumed.	Replace the ribbon with a new one.
38	RF Tag Ribbon Error	The ribbon is not installed properly.	Check the ribbon and tag authentication.

### ③ SAM

Code	Code Name	Description	Solution
32	SAM Module Response Timeout	SAM module communication fails.	Check the SAM B/D interface and SAM B/D.

#### ④ Miscellaneous

Code	Code Name	Description	Solution
20	Command Error	The command is not compliant with the specifications.	Send compliant command.
21	Parameter Error	The parameter is not valid.	Send the parameter command.
22	Main Communication Part Timeout	The command is not sent on time.	Send the command.



Caution

One of the following steps must be taken to recover the printer from the error state:

- 1) Press the **"RIBBON SET"** button with the ribbon installed.
- 2) Press the **"EJECT"** button.
- 3) Turn off and on the power.

#### -Additional Errors

Errors	Solution
The ribbon is frequently cut at the top of the card.	<ul style="list-style-type: none"> <li>- Check the X-coordinate in the printer driver.</li> <li>- The recommended starting value for the X-coordinate is <math>14 \pm 2</math>.</li> </ul>
The printer is unable to find the Card Designer or other programs.	<ul style="list-style-type: none"> <li>- Make sure that the printer driver is installed correctly.</li> <li>- Check the connections of communication cables.</li> <li>- Reboot the PC.</li> </ul>

## Ribbon Specifications

#### -Color Ribbons

Ribbon Type	Specifications	TP-9X00 Series	NX0 Series
YMCKO	200 Prints/Roll	○	○
1/2YMCKO	300 Prints/Roll	○	○
YMCKO-K	167 Prints/Roll	○	○

#### -Monochrome Ribbons

Ribbon Type	Specifications	TP-9X00 Series	nxo Series
Blue	1000 Prints/Roll	○	○
Black	1000 Prints/Roll	○	○
Red	1000 Prints/Roll	○	○
Green	1000 Prints/Roll	○	○
White	1000 Prints/Roll	○	○
Metallic gold	1000 Prints/Roll	○	○
Metallic silver	1000 Prints/Roll	○	○
KO(black overlay)	500 Prints/Roll	○	○

## Printer Specifications

#### -Product Features

##### 2 Input Hoppers

- Load up to 200 cards with an optional Input Hopper.
- Load 2 different types of cards at the same time.  
(The card type can be selected before printing.)

##### Compact & Light

- Only requires a small space.
- Easy to carry (NUVIA series-N20/N30: 4.5kg)

##### High Level of Security

- The ribbon and card input hopper can be locked with optional Kensington lock as a physical locking device (high level of security for card printers)

##### Versatile Usage

- Support PCs, smartphones, tablet PCs, and other mobile devices  
(Wi-Fi option is required)

#### -Standard Specifications

##### ① Printing Type

- Thermal Transfer/Dye-sublimation

##### ② Printing Function

- Single/Double-Sided, Edge-to-Edge Printing

##### ③ Resolution

- 300 dpi (11.8 DPM), 16.7 Million Colors

##### ④ Printing Speed

###### (1) Color Printing

- Single-Sided: 180~200 cards/hr.
- Double-Sided: 100 cards/hr.

###### (2) Monochrome Printing

- 800 cards/hr.

## ⑤ Card Capacity

- Auto Feed Input: 100 standard format cards (0.76mm)  
Up to 200 cards with optional input hopper.
- Auto Feed Output: 60 cards (0.76mm)
- Single Card Printing Input/Output: 1 card

## -Optional Accessories

- Optional Accessories
- Optional Input Hopper(increase the capacity from 100 to 200 cards)
- Input Hopper Lock (N20/N30)
- Ribbon Lock
- Kensington Lock (for theft prevention of the printer)

## -Printer Specifications

### ① Dimensions (Width x Length x Height) & Weight

#### 1) N10 (Manual Feed)

- Dimensions: 305.6mm (L) x 184mm (W) x 228mm (H)
- Weight: 3.7kg

#### 2) N20/N30 (Auto Feed)

- Dimensions: 366mm (L) x 184mm (W) x 228mm (H)
- Weight: 4.5kg

### ② Power Adapter

- Manufacturer: CHANNEL WELL TECHNOLOGY
- Model No.: KLP-060M-VI
- Input: 100-240V ~ 50/60Hz 1.7A /Output: + 24V 2.5A 60W



Caution

Only use power adapters provided by the manufacturer; otherwise, it may affect the printing quality.

### ③ Font

- MS Windows Type Fonts

## ④ Memory

- 128 MB RAM

## ⑤ Interface

- USB 2.0 (High-Speed), RS-232 (Only Debugging), Built in 10/100 Ethernet

## ⑥ PC Specifications

- Window 10, Window 8, Windows 7, Windows Vista, XP, Windows 2008 Server, Windows 2003 Server 32-bit / 64-bit

## ⑦ Software

- Card Designer

# Regulatory

## -FCC



FCC IDENTIFIER : XTNNUVIA  
Name of Grantee : TIT ENG Co.,Ltd.  
Equipment Class : Part 15 Low Power Communication Device Transmitter  
Notes : ID Card Printer

### FCC Statement

CAUTION: Changes or modifications not expressly approved by the party responsible for compliance could void the user's authority to operate the equipment.

NOTE: This equipment has been tested and found to comply with the limits for a Class B digital device, pursuant to Part 15 of the FCC Rules. These limits are designed to installation. This equipment generates uses and can radiate radio frequency energy and, if not installed and used in accordance with the instructions, may cause harmful interference to radio communications. However, there is no guarantee that interference will not occur in a particular installation. If this equipment does cause harmful interference to radio television reception, which can be determined by turning the equipment off and on, the user is encouraged to try to correct the interference by one or more of the following measures.

- Reorient or relocate the receiving antenna.
- Increase the separation between the equipment and receiver.

"This device complies with part 15 of the FCC Rules. Operation is subject to the following two conditions: (1) This device may not cause harmful interference, and (2) this device must accept any interference received, including interference that may cause undesired operation."

## -EU

This product is CE marked according to the provision of the R&TTE Directive (99/5/EC). Here by T.I.T ENG Co., Ltd. Declares that this product is in compliance with the essential requirement and other relevant provisions of Directive 1999/5/EC.

# CE1177

## -RoHS



We hereby guarantee that all products that POINTMAN will deliver directly or through any third party to you, do not contain Pb, Cd, Hg, CR+6, PBB, PBDE to the best of our knowledge, Thereby our products are in accordance with RoHS2 Directive.

- Directive 2002/95/EC
- Directive 2005/717/EC
- Directive 2005/747/EC



“This device complies with part 15 of the FCC Rules. Operation is subject to the following two conditions: (1) This device may not cause harmful interference, and (2) this device must accept any interference received, including interference that may cause undesired operation.”



This document is the copyright of T.I.T ENG Co., Ltd. and may not be reproduced in full or in part by any means, electronic or otherwise, without the prior written consent of T.I.T ENG Co., Ltd.

The Company would be very grateful if any accidental inaccuracies could be pointed out to us, as well as any other constructive criticism which might lead to a better understanding.



[www.pointman.co.kr](http://www.pointman.co.kr)

**-Main Office : T.I.T ENG Co.,Ltd. (POINTMAN)**

7th Floor, Shin-do B/D, 215, Jungdae-ro, Songpa-Gu, Seoul, Korea, ZIP:136-160  
TEL : +82 2 3431 2370, FAX : + 82 2 3431 2371, [www.pointman.co.kr](http://www.pointman.co.kr)  
[sales@pointman.co.kr](mailto:sales@pointman.co.kr)

**-U. S. A Office : POINTMAN USA**

2115 Linwood Ave., 5th Floor, Fort Lee, NJ 07024, U.S.A  
TEL : +1 201 676 2446, FAX : +1 201 944 3660, [www.pointmanusa.com](http://www.pointmanusa.com)

**-China Office : POINTMAN CHINA**

Room 1408, Building A, Haoming Fortune Plaza North part of Shennan  
Da Road,Futian district, Shenzhen, China, ZIP: 518042  
TEL : +86 755 2397 2483, FAX : + 86 755 8275 5963, [www.pointmanchina.com](http://www.pointmanchina.com)