

## Announcement

Dear users:

Thank you for purchasing and using our products. For the sake of your safety and interests, before using the products, please carefully read the product specifications as well as all the materials attached to the PC. If you don't operate and use the products according to the product specifications, we shall not assume any responsibility for any personal harm, assets or other losses incurred.

The product specifications (hereinafter referred to as specifications):

- ◆ The proprietary of the specifications belongs to our company;
- ◆ The proprietary of trademark and trade name mentioned in the specifications belongs to their respective owners;
- ◆ If the content of the specifications doesn't conform to that of the actual product, the actual product shall be binding.

If you have any misunderstanding or objection about any content or article & clause in the specifications, please put forward a written objection within 7 days after purchasing the PC. Otherwise, it shall be deemed that you have agreed to, understood and accepted all the contents of the specifications.

---

# Catalogue

<b>1. Special notice</b>	
1.1 Special hint .....	2
1.2 Please be sure to read the important hints for using laptop computer .....	2
1.3 Special notice .....	3
1.4 Please be sure to read the instructions on the battery of laptop computer.....	4
1.5 Instructions on safety .....	7
<b>2. Product overview</b>	
2.1 Overview .....	9
2.2 Introduction to parts & components .....	9
2.3 Unpacking and inspection .....	11
<b>3. General knowledge on basic operation</b>	
3.1 Indication lamp on system status .....	12
3.2 To shut off the computer .....	12
3.3 Functions of keyboard .....	13
3.4 Touch pad .....	13
3.5 Display screen .....	14
3.6 Network card .....	14
3.7 Camera .....	14
<b>4. Setup of BIOS (basic input &amp; output system)</b>	
4.1 Method on BIOS Setup .....	15
4.2 Main (main setup) .....	15
4.3 Boot (booting picture and sequence setup of booting equipment) .....	16
4.4 Security (setup of password protection) .....	16
4.5 Exit (exit setup) .....	17
<b>5. Installation of driver program and specification of use</b>	
5.1 Installation of driver program .....	18
<b>6. Fault analysis and elimination</b>	
6.1 Problem on sound .....	19
6.2 Problem on HD .....	19

## 1. Special notice

### 1.1 Special hint

In order to facilitate understanding and arouse your attention, as for product safety or information needing special attention to, we will give you the hints in this chapter or the chapters that follows according to the following levels and special warning words. These special warning words are expressed as follows:

- ◆ [Danger] ---indicating cautions against high risks;
- ◆ [Warning] —indicating cautions against medium risks;
- ◆ [Note] —indicating that attention should be paid to light risks;
- ◆ [Prohibition]---indicating that dangerous operation should be prohibited;
- ◆ [Reminder]—indicating that attention should be paid to safety or other contents;

This chapter doesn't provide all the safety information. For the sake of your safety and interests, we put the safety information on parts of the products in the subsequent chapters as needed. No matter where these safety information are located, you should carefully read them.

Similarly, besides the special notices expressed with special warning words, you should give same attention to other contents and introduction in the specifications.

### 1.2 Please be sure to read the important hints for using laptop computer

Laptop computers belong to high-tech and precision products. Please be sure to carefully read the following use hints.

#### 1. Maintenance of LCD

- ◆ Don't put any heavy things on the laptop computer.
- ◆ When using suitcase or backpack, please make sure that there aren't too much things inside and no additional pressure is put on the laptop computer bag and the back part of LCD.
- ◆ Please don't scratch, twist or strike the screen surface of LCD.
- ◆ Don't place the screen of LCD in an environment where the temperature exceeds 40 Celsius degrees or the humidity exceeds 90%.
- ◆ Don't expose the screen of LCD to direct sunlight or strong fluorescence.
- ◆ Don't place any things between LCD screen and keyboard, such as pencil, documents and so on, which will destroy or scratch LCD screen. Please don't use corrosive detergent to wipe LCD screen, which will destroy screen.

2. In order to prevent computer from getting overheated, please make sure not to block heat disperse ventilation vents in the computer operation.
3. When the computer system is accessing mobile storage and other mediums, please don't remove the mediums. Otherwise, it will lead to the system breakdown or data destruction.
4. Please don't open the computer shell when the system is running because this will lead to data loss or destruction. The formatting of HD can delete all the data in HD. Please back up the data in advance. As for important data, please make sure that they have been timely

backed up in other storage mediums. The company shall not assume any responsibility for the data losses incurred.

5. In order to guarantee the safety of yourself and computer, please make sure that the power has been corrected grounded when using the external power supply. If you won't use the computer for a long time, please pull off the power plug in order to avoid transient voltage causing system destruction. The power supply should be stable and be free from interference. When you are not clear about the local specifications on electric appliance, please consult your distributors or your local power company. For the sake of safety, please don't damage the grounding line of power socket. When plugging off the power, you should avoid pulling off the electric wire directly by pulling. Please make sure to pull from the root of socket so as to guarantee safety. Before cleaning the computer, please remember to firstly plugging off the power socket and then remove the battery. Please don't disconnect the power adaptor.
6. Please don't use the power adaptor not attached to the laptop computer because this will damage the computer.
7. Please don't take or place the laptop computer with one hand or put your laptop computer in an unbalanced state.
8. This product can only be disassembled by authorized service staff of agent company. Please make sure to keep the sealing strip intact. Otherwise, the warranty or three guarantees service may be influenced.
9. If you have set up a password, please keep it in mind. Otherwise, your computer cannot be started. If you have forgotten the password, please contact the supplier or authorized maintenance station. However, this may destroy all of your data.
10. When the CD-ROM is popped out manually, please don't use pencil and other breakable goods so as to avoid blocking the popping hole in case of emergency.

### **1.3 Special notice**

Applicable group

[Note] You should master a certain basic common language on computer in order to operate the computer. Meanwhile, the computer is not suitable for independent operation by children. If necessary, children must be accompanied by adults.

### **Working environment**

[Danger]

In order to prevent accidental failure, the computer should run within the following defined environmental scope:

Content	Scope of application	Remarks
Temperature of storage and transportation	-40°C to -50°C	
Relative humidity of storage and transportation	20% - 93%(40°C)	
Atmospheric pressure	86 kPa - 106 kPa	
Adaptation capability of power	220V ±22V, 50Hz ±1Hz	
Working humidity	35% - 80%	
Working temperature	10°C - 35°C	

**[Warning]**

In order to prevent the computer from being harmed by the environment (dampness, dust, food, liquid, direct exposure to sunlight etc), the computer should be placed in a dry place with good ventilation.

In order to prevent the computer from being disturbed and damaged by the magnetic field, please keep it away from other household electric appliances (such as Television set, air conditioner etc).

Please don't splash liquid or other impurities into the computer. Otherwise, it may lead to short-circuiting of its internal components, which will further give rise to electric shock or fire accidents.

**[Note]**

If the computer is switched on and started when the low temperature condition hasn't been resumed, it may lead to unrepairable faults on the computer. Therefore, before using the computer, please firstly make sure that the computer is resumed for over 2 hours under the room temperature (above 10 Celsius degrees).

**Before being used**

**[Warning]**

After the computer is stored and transported under the environment of lower than 10°C, the computer should be placed for over 2 hours under the room temperature condition of 10°C — 35°C before being used in order to prevent the computer temperature from getting excessively low, which thus gives rise to electrified damages. Please don't disassemble the package during the period. Let the computer resume its temperature naturally and avoid the temperature increasing excessively quickly, which thus leads to electrified damages.

**[Note]**

Before using the computer, please make sure that the computer connection, power use and other affairs conform to the requirements in the specifications.

**Removal, transportation and storage**

**[Note]**

When moving the computer, special care should be taken.

The computer should be placed in the original packing box in case of transportation. You

should pile and place the packing box according to the symbol and indication of packing & transportation diagram. You should also use closed cases in case of removal. In case of storage, the packing materials should be placed beyond children's reach in order to prevent the occurrence of unsafe conditions.

According to the relevant interpretation of GB/T9813-2000 General Specifications of Micro-computer, after the computer is stored and transported under the environment of lower than 10°C, before using the computer, please place the computer for over 2 hours under the room temperature condition of 10-35 Celsius degrees in order to avoid electrified damages due to excessively low computer temperature. Please don't disassemble the package during the period. Let the computer resume its temperature naturally and avoid the temperature increasing excessively quickly, which thus leads to electrified damages due to computer frosting and dewing.

**Battery**

[Note]

To replace the lithium battery of computer incorrectly may give rise to explosion risks. Please make sure that the replacement and installation of lithium battery be done by professional maintenance staff. Only battery products of same or equivalent types recommended by manufacturers can be used for replacement. The proper discarding of battery will lead to serious environmental pollution. Please dispose of the consumed battery in a proper way or return the waste & used battery to the post-sales & maintenance department for treatment so as to avoid environmental pollution.

#### **1.4 Please be sure to read the instructions on the battery of laptop computer**

Please obey the following rules and use your battery properly.

Newly-purchased battery:

The new battery can only be charged after the original electricity capacity is fully consumed.

Lifespan of battery:

Un-proper use and maintenance may shorten the battery lifespan. In order to increase the battery lifespan and enhance the battery functions, the battery should be fully and thoroughly discharged every other 30 days and be re-charged until saturation.

**Battery gauge:**

Inside the battery there is a built-in gauge, which can calculate the electricity of battery. The battery gauge depends on the battery memory to determine the extent whether to stop charging and discharging. However, if you frequently do incomplete charging or incomplete discharging, the battery memory will be in confusion.

In order to increase the accuracy of the battery gauge, you should do complete discharging and complete charging until saturation for at least one time every other 30 days or after 20 times incomplete discharging.

Due to the battery's own characteristics, the quantity of electricity will gradually decrease and the duration of operation will be shortened. Within the battery warranty period, the battery may not be charged to 100%. However, this doesn't influence the normal operation.

**This is a common phenomenon.**

To save the battery power:

A. Senior power management:

Your laptop computer has a function of senior power management, which can slow down the speed of processor and ambient parts. The use of these functions will help to save the battery power

### **B. The brightness of LCD:**

The LCD may consume a lot of power. Therefore, if the brightness is adjusted down, it will save some power.

### **C. Software and peripheral:**

As for different software and peripherals, even if they are not the program or equipment in use, they still consume power. In order to save the battery power, we recommend as follows:

- ◆ If the Modem or other communication programs are not used, these programs shall be shut off.
- ◆ To pull off the unnecessary peripherals from the computer socket.

### **Q & A :**

- ◆ How to fully discharge the battery?

Let the computer run with the battery power until the computer automatically shuts off due to excessively low power. Even when you see the information on excessively low power on the computer screen or when you hear the warning beep sound of excessively low power, you cannot manually shut off the computer. You should let the continuously running state of the computer go on until all the battery power is consumed and the computer is automatically shut off.

- ◆ How to fully discharge the battery?

When the battery is being charged, you should generally wait until that the battery indication lamp on the computer indicates the charging has been completed, i.e. reaching the saturation. For details, please refer to the indication lamp of power state in this manual.

- ◆ How to maintain the battery?

You should do one complete discharging and charging at least every other 30 days or after every other 20 times of incomplete discharging.

### **Special attention:**

The battery can only be used in this laptop computer.

The un-proper replacement of battery kinds may lead to explosion risks. Only the original battery of same type or the battery kinds of same levels recommended by the original manufacturer can be used for replacement.

Please don't disassemble the battery.

Please expose the battery to fire or water.

In order to prevent the fire accident, combustion or damages on the battery, the two poles of the battery cannot be touched with metallic articles.

Special care should be taken when handling damaged battery or battery with liquid leakage.

If you touch the battery liquid un-carelessly, please rush to flush with soap and water. If it

touches your eyes, please wash your eyes with water for 15 minutes and rush to hospital for medical treatment.

If the environmental temperature is on the high side, please don't charge the battery.

When storing the battery, please don't expose the battery to a high temperature.

## **Power**

[Danger]

You need to use quality three-core grounding power plug and socket with grounding protection. The power socket should be finally inserted into power with sound grounding. A sound grounding is an important guarantee for the normal running of your computer. If you replace standard power lines without authorization, it may lead to serious results. Meanwhile, the maximum length of power lines shouldn't exceed 4.5 meters.

Before using the power, you should confirm that the power conforms to the requirements of computer use according to the specifications of power plug and socket. Quality power and excellent grounding are important guarantee for the normal running of the computer.

Otherwise, it may lead to serious results.

[Danger]

During the thunderstorm period, the use of products may harm the safety of your body and other assets. Therefore, during the weather of thunderstorm, please avoid using the computer, disconnect the telephone line, network line, power line and other conducts which are connected with outside. In case of thunder, please don't insert and pull these lines & cables.

[Warning]

Try not to insert the power line of 110V into the power line of 220V. You should also try not to change the voltage selector switch of the computer power. Any change may lead to personal body harm or damage of equipment.

[Note]

Carefully examine the AC power line attached when purchasing the computer. In case of any problems, please contact relevant dealer.

The power line used for microcomputer must conform to the following safety regulations:

- Conformity to CCC certification
- The power socket should be finally inserted into the power line with excellent grounding
- The power socket must conform to GB 1002 — 1996 and GB2099.1-1996

## **Ergonomics**

[Reminder]

When you work or play games on a computer, please adjust your environment and arrange your computer devices so as to make your body in a comfortable and flexible state. The following suggestions can help you obtain a more comfortable environment.

### **1. Supporting your back:**

Select a chair which can support the lower part of your back.

Adjust the height of working surface and chair so that they are in a comfortable and natural state.

### **2. Making a comfortable posture for legs:**



Remove the articles under the table and make the position and movement of your legs become more comfortable.

If your legs cannot comfortably rest on the floor, just use one footstool.

### 3. Reducing the bending and twisting of your neck:

Place LCD in the central position before you. If you refer to documents more frequently than display, please consider putting documents directly before you and the display should be slightly on the left side.

Please consider using document frame and place the document in a level near to your eyes. Place the top part of screen in a level near to your eyes. As for those with astigmatism, it may be necessary to put the screen lower, or wear glasses suitable to computer work through consultation with qualified health experts.

### 4. Decreasing the fatigue of eyes:

Put the screen in your arm's reach and comfortably sit before the screen.

Avoid glare. The position of display should be far away from the light source generating glare. Or you should use window curtain to control the light strength.

Please remember to clean the screen. If you wear glasses, please clean the glasses, too.

Please adjust the brightness and contrast of screen as well as the font size to a state which make you comfortable.

When operating keyboard and touch pad, please lightly touch the keys and keep your hands and fingers relaxed. Just slightly strike the keyboard.

When single-click the touch pad or use game pole or other game controllers, you should slightly strike the keyboard.

When typing words, avoid putting your palm or wrist on the object surface with wide angle for relaxation. If necessary, relax your palm during the pause of typing.

When not typing words, just relax your arms and hands. Don't relax on the edge of objects, such as table edge.

Adjust your chair and not allow your seat to extrude the back of your knees.

## 1.5 Instructions on safety

1. The power socket hole should be installed near the equipment or places easy for operation. When inserting and pulling the power line, avoid directly pulling out the power line by pulling and dragging. Please be sure to pull from the root of plug so as to guarantee the safety and caution against electric shock. Please don't disassemble the power adaptor.

2. Not to place the product in places with easy access to water.

3. In case of installation, please place the product on a stable supporting foundation. This product may fall off due to un-stable placement, which leads to serious damages.

4. Not to place the products in places where there are frequent flow of people so as to avoid trampling the electric wire. Please make sure that no articles are placed on the electric wire.

5. Follow all the warning information and indication on the products.

6. If you don't plan to use the product for a long period, please pull off the power socket so as to avoid excessive transient voltage, which can cause damages.

7. Please don't splash any liquid on the product. This action may lead to risks of fire accidents or electric shock.
  8. In case of the following conditions, it should be serviced by professionals:
    - a. The power line or socket has been destroyed or torn off.
    - b. The liquid is splashed to the product.
    - c. The product is drenched by raining or splashed by water.
    - d. When you follow the instructions on operation, the product is still unable to run normally.
    - e. If the product once fell off or its shell has been destroyed.
    - f. If the product has apparent damages.
  9. For the usage and storage temperature of this product, please refer to the product specification in annex A. If the product is not used and stored within the defined temperature scope, it may lead to permanent damages on the product.
  10. Please don't use the power adaptor where it's near to water or other liquids. Please don't splash liquid to the power adaptor.
- Note: All the photos & diagrams in this manual are schematic diagrams and can only be used for reference. The actual use should be based on the object.

## 2. Product overview

### 2.1 Introduction

Product name: laptop computer

Series and type: EBT70X, EBT90X, EBT10X, EBT12X.

Characteristics of product performance:

The latest mobile computation technology of VIA

The laptop computer adopts the latest mobile computation technology of VIA and has a better performance.

The system expansibility

The system allows the upgrading and substitute of EMS memory and HD capacity. When replacing substitute products for capacity expansion, please consult your local distributor or go to designated maintenance department for operation.

Clear LCD

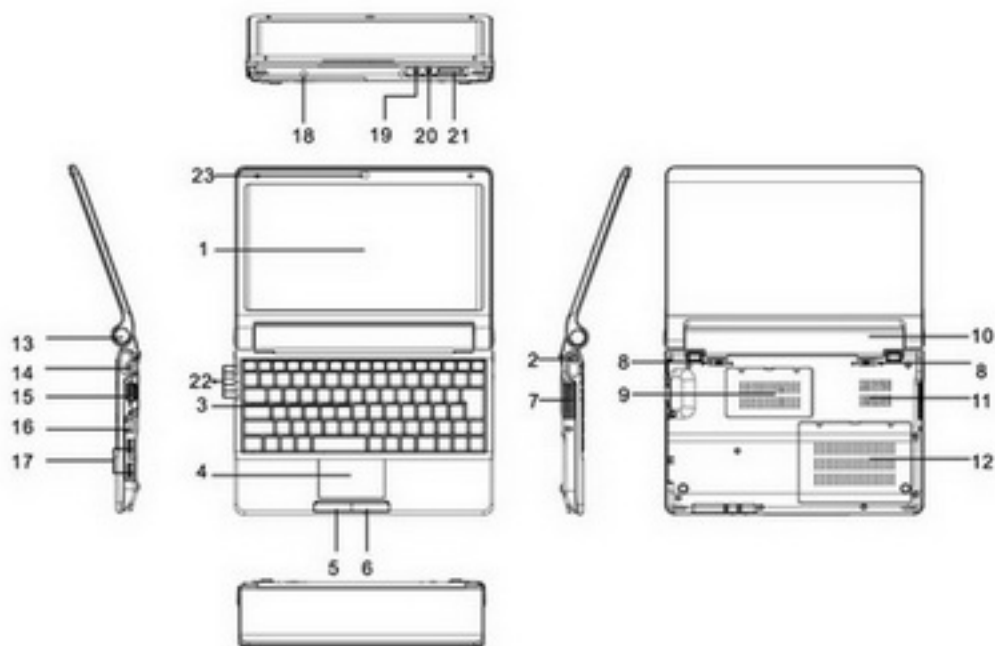
The laptop computer has a backlight LED, which brings you clear and bright colorful words and images.

The feature of communication

This laptop computer is equipped with a built-in 802.11b/g wireless solution for LAN.

### 2.2 Introduction to parts & components

(Note: The following images are schematic diagrams and the real objects shall be binding).



#### 1. Display

The data and image in the computer shall be displayed on the screen.

#### 2. Power button

It's used for starting/shutting off the computer.

#### 3. Keyboard

Keyboard can be used for data entry.

#### 4. Touch pad

The touch pad is a built-in pointer device. Its function is similar to that of mouse.

#### 5. Left key of mouse

#### 6. Right key of mouse

#### 7. Fan grid

The fan grid is used for hot air disperse. Please don't fully block the vent of air flow.

#### 8. Battery locking bolt

The battery locking bolt can be used for locking or releasing battery pack.

#### 9. Cover of EMS memory

There is a DDR dynamic memory module under the cover.

10. Battery pack

It can power the computer if the external power is not connected.

11. Fan grid

The fan grid is used for hot air disperse. Please don't fully block the vent of air flow.

12. Cover of HD

The HD is located under the cover.

13. Rotating shaft

14. DC-IN socket

Connecting the power adaptor.

15. VGA port

Used for connecting external monitor.

16. RJ-45 interface

Connecting network line.

17. USB port

Used for connecting USB devices.

18. Screw hole

19. Socket for microphone

External microphone.

20. Socket for earphone

External earphone.

21. Socket for SD card

SD card reader

22. LED indicator lamp

Whether the light is on or not indicates different status (for details, please refer to the following section)

### Special hint

Don't place any things between LCD screen and keyboard, such as pencil, documents and so on, which will destroy or scratch LCD screen. Please don't use corrosive detergent to wipe LCD screen, which will destroy screen. In order to prevent the computer from getting overheated, please be sure not to block the heat disperse ventilation vent when working on the computer. This product can only be disassembled by authorized service staff of agent company. Please make sure to keep the sealing strip intact. Otherwise, the warranty or three guarantees service may be influenced.

### 2.3 Unpacking and inspection






Please carefully remove the package and take out the computer and other accessories. If any loss and missing are found, please immediately contact distributors. Please store the original packing materials for replacing goods.

Generally, you will have the following parts & components

1. Laptop computer
2. Power adaptor
3. User's manual
4. Disk on driver program
5. Battery
6. Warranty card
7. Quality certificate

## 3. Basic common knowledge on computer operation

### 3.1 Indicator lamp for the system status

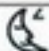
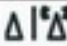




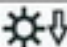


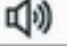

LED icon & symbol	Indicating contents
	The blue lamp indicates that the system is in running status.
	The flashing orange light indicates that the battery is being charged. When the system is powered by battery, the flashing orange light indicates that the system is running. However, the battery electricity is on the low side. The green light indicates that the battery has been fully charged.
	The green light indicates that the system is reading CD-ROM or HD.
WLAN	The flashing green light indicates that the wireless network card is currently switched on.
	The green light indicates that the numeric keyboard has been opened.
	The green light indicates that the Caps Lock on English entry mode has been started.

### 3.2 Stop the computer

When you finish your work, you can shut off the computer power or let the computer enter the mode of standby or hibernation:

Mode of stopping	Method	Method on re-starting or usage
Directly shut off the power	Please follow the program for shutting the operation system. By doing so, you can avoid the losses of data or damages of software. If the system is altered due to the problems on hardware or software, you can use the power button to shut off the computer.	Using the power button
Standby	According to your setup of Windows, the system will enter the standby status according to following method: Close the computer cover Use the power button	Using the power button
Hibernation	According to your setup of Windows, the system will enter the hibernation status according to following method: Close the computer cover Use the power button	Using the power button

### 3.3 Function of keyboard

Icon	Key pressing action	Function
	Fn+Esc	Making the system enter the hibernation mode
	Fn+F1	Shutting off the function of wireless network card
	Fn+F2	Shutting off the function of Bluetooth (this function is optional)
	Fn+F3	Mute
	Fn+F4	Shutting the mouse function
	Fn+F5	Repeatedly switch among the three image entry mode, i.e. only LCD, only CRT screen, and LCD and CRT screen used simultaneously
	Fn+F6	Decreasing the brightness of LCD
	Fn+F7	Increasing the brightness of LCD
	Fn+F8	Decreasing the volume of loudspeaker
	Fn+F9	Increasing the volume of loudspeaker
	Fn+F10	Shutting off the display screen

You can start the numerical keyboard of internal keys by pressing Numlock. The numeric is displayed at the right lower corner of keys. The numerical keyboard contains the keys for the basic calculation, i.e. plus, minus, times and divide.

Press the Numlock once again, the original keyboard function will be resumed.



### 3.4 Touch pad

The built-in touch pad is a position device compatible with PS/2. You can feel the movement on its surface. Move your finger on the surface of touch pad, the cursor will follow.

### 3.5 Display screen

In order for the comfort of your eyes, your laptop computer is equipped with TFT LCD, which supports high resolution and real color functions. It brings marvelous visual excitement.

To prolong the lifespan of display screen

To obey the following rules can prolong the lifespan of display screen.

1. To adjust the brightness of screen into the minimum brightness, which is comfortable to your eyes.
2. When using it on the table, please connect an external monitor and shut off the display screen of the laptop computer.
3. Don't close the option of entering the pause mode in shutting off the power management.
4. If the AC power is used and there is no external monitor, please don't switch to the pause mode when not using it.

[Note] In order to prolong the battery lifespan, adjust the brightness to the minimum degree under the precondition of comfortable visual enjoyment. In this way, the internal light source can use less power.

### 3.6 Network card

The laptop computer is equipped with a built-in Ethernet network card conforming to 10/100Base-TX standard. Insert one end of the LAN line into RJ-45 interface at the right side of your computer. Then you can realize the data transfer through the internet.

Open or close wireless network

Your computer is equipped with a built-in wireless network card. Please follow the hint of the operating system for setup and access of the wireless network. It will take some time for your

computer to connect the wireless network. Please consult the local service provider of wireless network.

## **4. Setup of BIOS (basic input & output system)**

In this chapter, we will teach you how to enter the BIOS setup program as well as the setup of control options for all kinds of hardware. You will also learn how to use the setup of the built-in safety protection.

The setup of common program is a hardware status program built in the BIOS of the laptop computer. It can execute and maintain many hardware functions. It's a software enabling operation with the menu mode and allowing the easy setup and change of set value.

BIOS contains the ex-works pre-set value of laptop computer. However, you still have a lot of opportunity to modify the pre-set values in BIOS. When the hardware is altered, such as upgrading, in case of temporary conditions, or when you decide to self-determine the set value of hardware so as to meet the special needs, it may be necessary for you to start the BIOS setup program.

BIOS can restrict the access by users by setting up passwords. This is an important function because the laptop computer usually keeps a lot of materials and the unauthorized access can be prevented.

### **4.1 Method on use of BIOS Setup**

The cases where you must execute the BIOS setup:

In case of any problem founding in the booting test, some information will appear on the screen, requiring you to execute the BIOS setup.

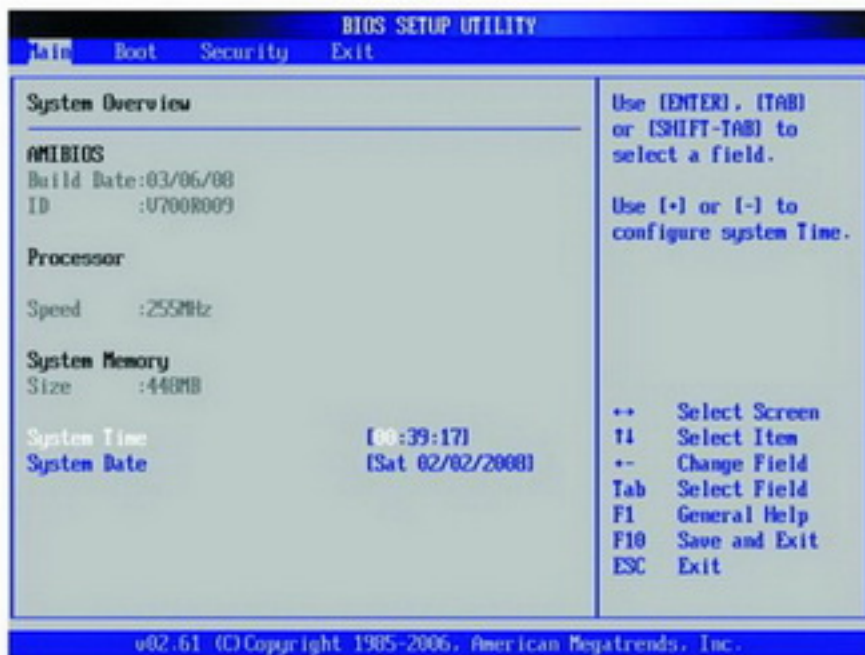
- ◆ You need to resume the default value.
- ◆ You need to change the setup value according to the specific hardware.
- ◆ You need to change the setup value in order to acquire the optimum system performance.
- ◆ If you plan to execute the BIOS setup, press the Delete key when starting the computer.
- ◆ How to select

For one option, you only complete the setup through two-level or three-level options. The majority of these options must pass three-level options: menu title, drop-down menu and sub-menu.

To move and select through keyboard. You can see the information on keyboard at the right lower corner of the screen.

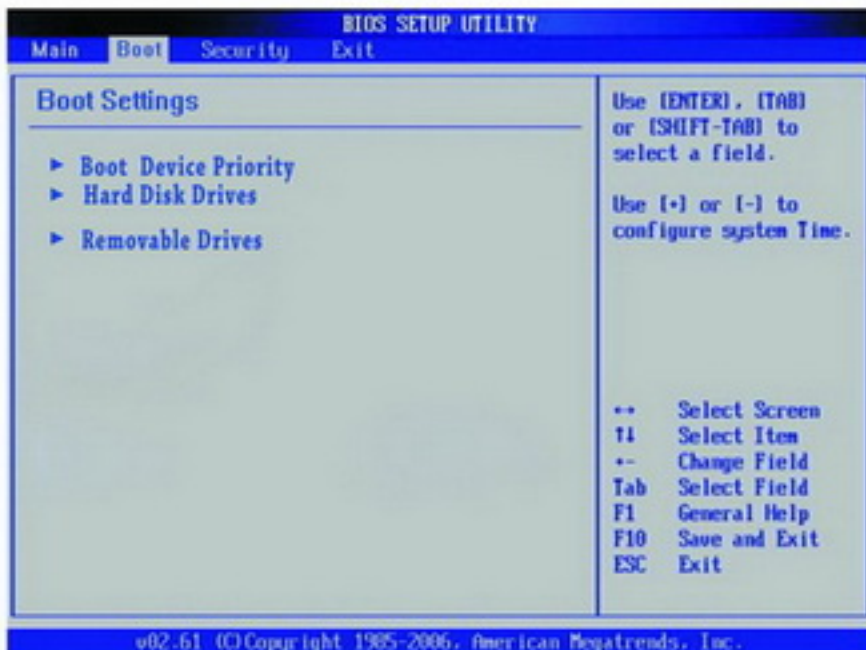
### **4.2 Main main (setup)**





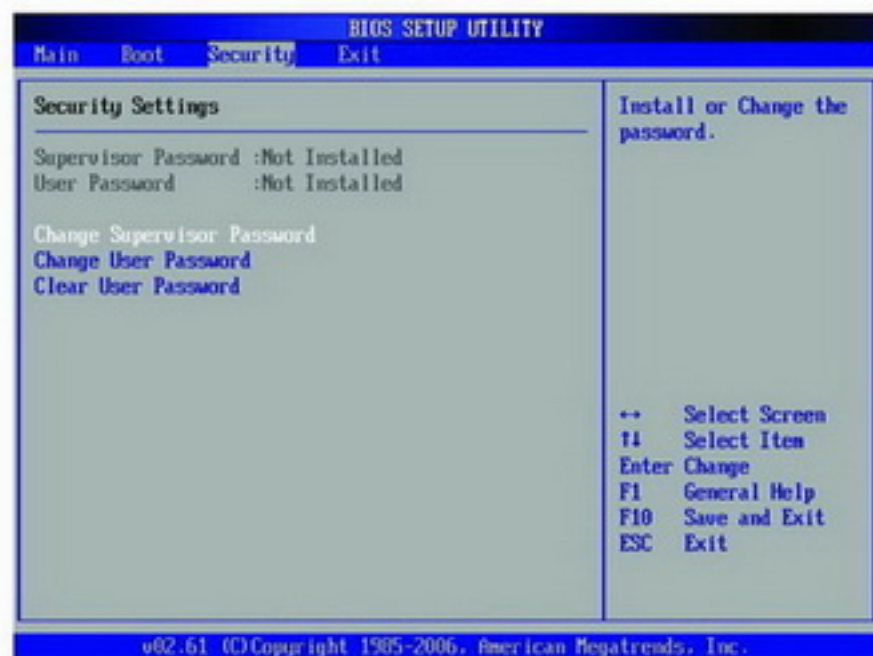
- ◆ System Time : setup of the system time
- ◆ System Date : setup of the system date

### 4.3 [Boot] Menu



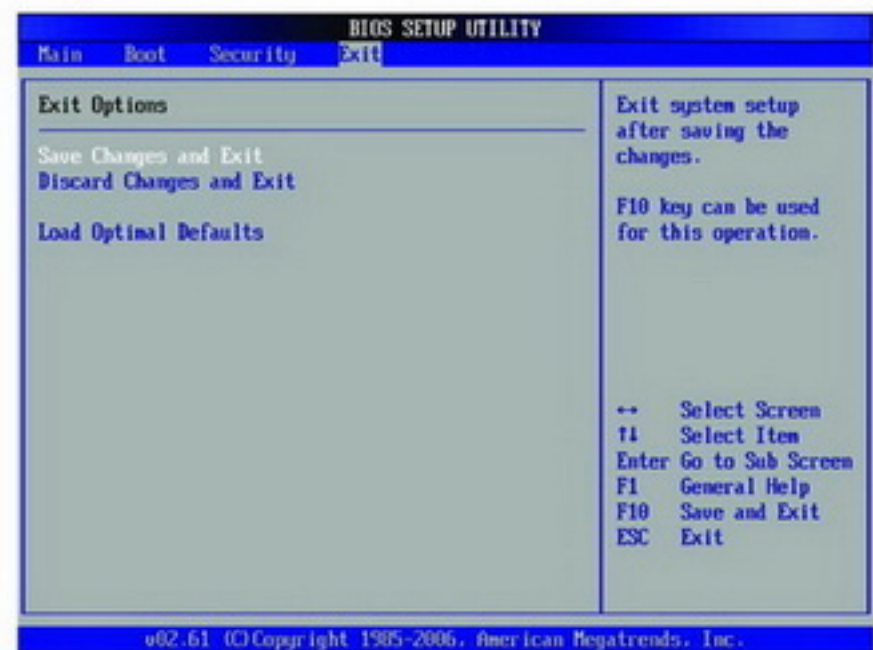
- ◆ Boot Device Priority: mainly used in selecting the sequence of boot device;
- ◆ Hard Disk Drives : used for selecting the sequence for starting hardware devices;
- ◆ Removable Drives : used for selecting the sequence for starting removable devices.

## 4.4 [Security] Menu



- ◆ Change Supervisor Password
- ◆ Change User Password
- ◆ Clear User Password

## 4.5 [Exit] Menu



- ◆ Save Changes and Exit
- ◆ Discard Changes and Exit
- ◆ Load Optimal Defaults

## 5. Installation of driver program

The CD-ROM only supports Windows 2000 and Windows XP.

Open the disc attached, illustrated as follows:

- ◆ Chipset: driver program for chipset of the computer;
- ◆ Video: driver program for VGA card;
- ◆ Audio: driver program for sound card;
- ◆ Wifi: driver program for wireless network card;

Click the corresponding icons and finish the installation according to the prompt.

## 6. Fault analysis and elimination

In this chapter, you will learn how to solve general problems on hardware and software. Your laptop computers must pass a complete test and conform to the system specification before being delivered. However, incorrect operation or negligence during the conveyance process will lead to the occurrence of problems.

This chapter will provide reference and identification information for general problems on hardware and software you may encounter.

In case of any problem, you can firstly try to eliminate it according to the description in this chapter. If the cases of error continue to emerge, consult your distributors for service information.

### 6.1 Problems on sound

#### Without sound

- ◆ Please double-click the icon of loudspeaker at the right lower corner of the task column and check whether the volume of loudspeaker has been shut off.
- ◆ Press Fn+F9 in order to increase the volume.
- ◆ Most of the problems on sound are related to software. If your laptop computer has a normal sound previously, the reason may be that the software setup is incorrect.

#### Unable to record

Please double-click the icon of loudspeaker at the right lower corner of the task column and check whether the volume of loudspeaker has been shut off.

1. Press the Option and select Property.
2. Select Recording and press the Enter button.
3. After the Enter button is pressed, the control console for recording volume will pop out.

### 6.2 Problems on HD

#### HD is unable to run normally or unable to be recognized

- ◆ If you just upgraded the HD, please confirm that the interface of HD is not loosened and the installation of HD is fully correct. You can pull off the joint, firmly re-insert it for one time and then restart the computer.
- ◆ The new HD need partitioning and re-formatting. The operating system and driver program also need to be re-installed.
- ◆ Please examine the indicator lamp of HD. When you access documents, the HD light will flash periodically.
- ◆ The new HD may be broken.
- ◆ If your laptop computer was once encountered with electrostatics or bumped, you may have destroyed the HD.

#### Too slow execution speed of HD

- ◆ If your HD has been used for a long time, excessive and unordered documents will result in a lot of disc fragments. Please follow the process, i.e. start—program—accessory—system tool—program for arrangement of disc fragment, to execute the disc arrangement. This process may take some time.

- ◆ Your HD has been infected with virus.

### **Document damaged**

- ◆ Please execute the surface scan in the disc scanning program for disc examination. Double-click My Computer. Right click C: select Property, single-click Starting Checkup in the fault finding status of the Tool label to execute the disc scanning program.

## **6.3 Problems on monitor**

### **Black screen in case of system booting**

- ◆ Please make sure that the laptop computer is not in hibernation or standby mode. Under these modes, the monitor will be shut off so as to conserve energy sources.
- ◆ Press the functional key so as to increase the brightness of screen.
- ◆ Press the functional key to determine that the laptop computer is not in the mode of only CRT output.
- ◆ The screen is not easy to read.
- ◆ Please press the functional key so as to increase the brightness of screen.
- ◆ The resolution of monitor should be set as 1024x768 so as to acquire the optimum display result.

1. Please enter Start—Setup—Control panel and double-click the icon of Display.
2. In the page of Setup, the resolution is set as 1024x768.

### **Screen flashing**

When your start or shut the computer, the screen will flash for several times. This is a normal phenomenon.

### **Damaged point of screen**

Due to the restriction of LCD manufacturing process, some image points cannot normally display a certain colors on LCD (i.e. the generally-called damaged point). This is normal phenomenon. You can feel assured. For details, please refer to GB/T9813-2000.

The relevant contents on the national standards are as follows.

Inspection shall be conducted under the following conditions:

- ◆ Ambient temperature: 20 °C~25 °C
- ◆ Light: 300 lx~700 lx
- ◆ Distance for visual observation: 35cm
- ◆ Angle for visual observation: the visual line and the screen surface form 90 degrees.

## **6.4 Problems on EMS memory**

After you install more EMS memories, the added memory capacity is not displayed when the self-testing is conducted for POST booting.

- ◆ The installation of memory module may be incorrect.
- ◆ The memory module is broken.
- ◆ Your system may be incompatible with some memory modules.

During the operation, the operating system gives out an error information on insufficient memory.

- ◆ This problem usually results from software or Windows.
- ◆ Please shut off unused application program software and re-start the computer.
- ◆ Otherwise, you must install more memory modules.

### **Special Declaration**

This laptop computer can support several peripheral devices & hardware, such as mouse, keyboard, printer and scanner. As for the peripheral equipment accompanied with the computer, the company doesn't guarantee the compatibility and reliability of its products. When users use the products, they must conform to the contents in the specifications. If consumers purchase the peripheral equipment from third parties, which will be connected to the laptop computer, please conform to the equipment specifications, correctly connecting the peripheral equipment and computer, and installing corresponding driver programs under the operating system supporting the equipment. As there are a lot of peripheral equipment manufacturers on the market, in order to guarantee the benefits of consumers, we recommend consumers to purchase quality-guaranteed products from famous manufacturers. In case that the third-party peripheral equipment are incompatible to the laptop computer, consumers should contact the third-party manufacturers.

As for software presented with the laptop computer (all the pre-installed software are presented software with the computer; they are free of charge for users), the company can guarantee the functionality and compatibility of its software. Users should refer to the user's guide for correctly using the software. Additionally, there are all kinds of software on the market, except for the special requirement by the software, most genuine software can run normally on the laptop computer. In order to guarantee the consumers' benefits, users are advised to purchase genuine software from official channels. As for any third-party software independently purchased and installed by users, users should follow the specifications for correct operation. In case that the third-party software is incompatible to the laptop computer, consumers should contact the third-party manufacturers.

It's recommended that before users purchase hardware or software from third parties, they can only purchase after the third-party manufacturers or distributors pass relevant tests in order to guarantee their interests. As for problems on third-party hardware or software, the company cannot guarantee customers' requirement for goods returning and changing. The company can supply technical support.

VIA® latest mobile computation technology adopted

◆ CPU

VIA C7-M 1.6GHz

◆ Chipset

VIA Vx700

◆ System memory

DDRII socket, which can be expanded to 1024MB to the maximum extent.

◆ Displaying memory

Dynamic DDR distribution technology: when the system memory is 512M, the maximum DDR is 64M. when the system memory exceeds 1024M, the maximum DDR is 128M.

◆ Screen

10.2" (wide-screen)TFT color LCD with 1024×600 WXGA of resolution.

◆ Display controller

VX700 integration , UniChrome ProII.

◆ keyboard

85 keyboard

◆ Touch pad

Touch pad with 2 buttons

◆ Storage device

Card reader module (SD/ MMC)

◆ HD

1.8", Zif interfacet, supporting 40GB/60GB/80/160GB HDD

◆ Sound effect

Two ports of sound effect: one is the microphone socket and the other is the socket for sound effect output, supporting AC'97.

◆ I/O interface;

1 microphone socket;

1 earphone socket;

2 USB2.0 interfaces;

1 interface for external monitor;

- 1 socket for network line (RJ-45);
- 1 card reader (SD/MMC);
- 1 DC-IN socket

◆ LAN

10/100Base-TX.

◆ Wireless network

802.11 b/g

◆ Power

Power adaptor: Input: 100-240V ~ 50-60 Hz 1.7A    Output: 12V 3A.

◆ Battery

As for the smart lithium battery, it can endure around 160 minutes after it's 100% charged. The actual duration period will depend on the battery condition and actuality.

Specifications on battery:

The duration of battery may be influenced by the following factors: times of charging and discharging, operating system, brightness setup of LCD, application programs (especially video playing, such as playing DVD etc), setup and functions used of power management (such as starting wireless function etc). The battery lifespan of the laptop computer is limited. The efficiency and duration of battery will decrease with the increase of usage times. This kind of normal battery exhaustion is a normal phenomenon.

◆ Dimension

About 254mm(W)×185mm(D)×31mm(H)

◆ Weight

Around 1.35 kilograms.

Note: The weight indicated is only the basic system weight and weight value is only supplied for reference. The actual weight will vary with different configuration and materials.

Note: As the specifications and configuration of the laptop computer are being updated quickly, there shall be no prior notice if there is any change on the product specifications. The configuration of computer purchased by users shall be the final result.



## **FCC STATEMENT**

1. This device complies with Part 15 of the FCC Rules.

Operation is subject to the following two conditions:

(1) This device may not cause harmful interference, and

(2) This device must accept any interference received, including interference that may cause undesired operation.

2. Changes or modifications not expressly approved by the party responsible for compliance could void the user's authority to operate the equipment.

NOTE: This equipment has been tested and found to comply with the limits for a Class B digital device, pursuant to Part 15 of the FCC Rules. These limits are designed to provide reasonable protection against harmful interference in a residential installation. This equipment generates, uses and can radiate radio frequency energy and, if not installed and used in accordance with the instructions, may cause harmful interference to radio communications. However, there is no guarantee that interference will not occur in a particular installation. If this equipment does cause harmful interference to radio or television reception, which can be determined by turning the equipment off and on, the user is encouraged to try to correct the interference by one or more of the following measures:

- Reorient or relocate the receiving antenna.
- Increase the separation between the equipment and receiver.
- Connect the equipment into an outlet on a circuit different from that to which the receiver is connected.
- Consult the dealer or an experienced radio/TV technician for help.

## **RF warning statement:**

The device has been evaluated to meet general RF exposure requirement. The device can be used in portable exposure condition without restriction.