

User's Manual

S310i Series



Caution

This equipment has been tested and found to comply with limits for a Class B digital device, pursuant to Part 15 of the FCC rules. These limits are designed to provide reasonable protection against harmful interference in residential installations. This equipment generates, uses, and can radiate radio frequency energy, and if not installed and used in accordance with the instructions, may cause harmful interference to radio communications. However, there is no guarantee that interference will not occur in a particular installation. If this equipment does cause interference to radio or television equipment reception, which can be determined by turning the equipment off and on, the user is encouraged to try to correct the interference by one or more of the following measures:

- Reorient or relocate the receiving antenna.
- Increase the separation between the equipment and receiver.
- Connect the equipment into an outlet on a circuit different from that to which the receiver is connected.
- Consult the dealer or an experienced radio/TV technician for help.

This device complies with Part 15 of the FCC Rules. Operation is subject to the following two conditions:

- (1) this device may not cause harmful interference, and
- (2) this device must accept any interference received, including interference that may cause undesired operation.

Warning: Changes or modifications not expressly approved by the manufacturer
Could void the user's authority to operate the equipment.

RF Exposure (SAR) Warning: This equipment complies with FCC RF radiation exposure limits set forth for an uncontrolled environment, under 47 CFR 2.1093 paragraph (d) (2)End users must follow the specific operation instruction for satisfying RF exposure compliance. This transmitter must not be co-located or operating in conjunction with any other antenna or transmitter except those that are described within this filing. The measured SAR levels evaluated are in compliance with the FCC RF exposure guidelines. The maximum reported Body Maximum SAR Measurement (1g) value is: 1.110 W/Kg.

The operation channel only available from CH1 to CH11.
The channel after 11th channel will be disable by software control.

Statement

To esteemed user:

Appreciated you very much for your purchase and using our product. To your safety and benefit, please carefully read the manual and all data bundled with the shipment before using the product. If you couldn't follow the manual to operate and use the product that any damage occurs to your personal safety, property or others, we will not take on the responsibility.

As for the product manual (says as "manual" afterward)

- The copyright of the manual exclusively belongs to us.
- All mentioned logos and fonts in the manual belong to their respective owners
- If there is any discrepancy between the content of the manual and real product, please comply with the actual product.

If you don't understand or have any disagreement with the content or terms of the manual, please send us your written objection not 7 days later than your purchase date; otherwise, it will be presumed you have already understood, accepted and consented to the whole content of the manual.

Contents

1. Cautions	
1.1 Special Warning	2
1.2 Important Notice while using the notebook – please must read it carefully	2
1.3 Special notice	5
1.4 Notice for using notebook batteries – Please read it carefully	7
1.5 Safety Precautions	13
2. Product Overview	
2.1 Brief introduction	15
2.2 Introduction to Units & Components	15
2.3 Open the package and check	19
3. Basic Information	
3.1 System Status Indicator	20
3.2 Turn off the notebook	21
3.3 Keyboard Function	22
3.4 Introduction to Touch Panel Function	23
3.5 Display Screen	23
3.6 LAN card	24
3.7 Built-in Wireless LAN Card	24
3.8 Camera	24
4. BIOS (Basic Input and Output System) Setup	
4.1 The ways to use BIOS Setup	25
4.2 Main (Main Settings)	26
4.3 Boot (Boot Screen and Boot Device Priority)	27
4.4 Security (Set up password)	28
4.5 Exit (Exit Settings)	28
5. Driver Installation and Applications	
5.1 Installing the driver	29
6. Troubleshooting	
6.1 Sound Problems	29
6.2 Network Connection Problems	30
6.3 Monitor Problems	31
6.4 Memory Problems	32
Special Statement	32

1. Cautions

1.1 Special Warning

To have your easier comprehension and higher attention, we will remind you of different levels of special warning phrases in the chapter and afterward, whenever involving product security or any information to be concerned. Here are these special warning phrases indicated as below:

- ◆ **【Danger】** ----- It indicates highly risky to be vigilant.
- ◆ **【Alert】** ----- It indicates medium risky to be vigilant.
- ◆ **【Watchful】** ---- It indicates slightly risky to be concerned.
- ◆ **【Prohibition】** - It indicates a risky operation to be prohibited.
- ◆ **【Reminder】** --- It indicates a safety situation, or other content to be concerned.

The chapter will provide you with security information, but not quite complete. For your safety and benefit, we will compile partial product security information into an appendix to the manual.

In addition to the notice derived from special warnings, you must pay much attention to other content and introduction of the manual likewise.

1.2 Important Notice while using the notebook - Please must read it carefully

Since the notebook is high-tech product that you need to read the following instructions carefully.

1. The maintenance of LCD display screen:
 - 1) Maintenance of LCD
 - ◆ Don't put any heavy objects on the notebook computer.
 - ◆ Please make sure there is no much stuff in your handbag or

backpack before putting your notebook in the bag. Meanwhile, no pressure will be placed on the bag and the back of the LCD. Do not scratch, twist or strike against the surface of the LCD screen.

- ◆ Please don't scratch, twist or strike the screen surface of LCD.
- ◆ Don't place the screen of LCD in an environment where the temperature exceeds 40 Celsius degrees or the humidity exceeds 90%.
- ◆ Don't expose the screen of LCD to direct sunlight or strong fluorescence.
- ◆ Don't place any things between LCD screen and keyboard, such as pencil, documents and so on, which will destroy or scratch LCD screen. Please don't use corrosive detergent to wipe LCD screen, which will destroy screen.

- 2) To prevent overheating of the system, please make sure do not block cooling vents of the system.
- 3) While the system is accessing any media, such as floppy disk drives, optical drives, mobile storage devices, please do not remove the media out of the system; otherwise, it might cause a system collapse or data damage.
- 4) Please do not dismantle the chassis while the system is running that might lead to the data damage or loss. Formatting the hard disk will delete all data that you must back up them in advance. Please make sure you have backed up important data in other storage media for we will not take on the responsibility of the data loss by formatting.

- 5) To guarantee the device and your safety, please make sure the power has been properly grounded while connecting to external power supply. If you do not intend to use the system for a long time, please unplug the power to avoid the system damage by temporary excessive voltage. It is required that power supply must be stable and not interrupted. If you don't know the local specification of electric appliance, please contact your local vendors or power companies. In view of safety, please do not neglectfully damage the ground wire of power plug. Please avoid forcedly pulling out the cord while unplugging. You should pull out the plug itself to ensure a higher safety. Please keep it in mind to pull out the plug and remove batteries before cleaning the system. Please do not dismantle the power adapter.
- 6) Please only use the bundled power adapter to the notebook; otherwise, it would cause the system damaged.
- 7) Please do not take or give away your notebook by one single hand, nor make your notebook within an unbalanced situation.
- 8) Only our authorized technician is restricted to disassemble the product that please must keep the seal undamaged; otherwise, it might influence your rights of warranty, or three guaranteed service.
- 9) If you have set up a password, please keep it in mind. Otherwise, your computer cannot be started. If you have forgotten the password, please contact the supplier or authorized maintenance station. However, this may destroy all of your data.

1.3 Special notice

User Groups

【Watchful】 It is necessary for users to have adequate knowledge about the notebook. Meanwhile, it is not suitable for children alone using a notebook. If necessary, children should use a notebook under adult help.

Working environment

【Danger】 To prevent an accidental breakdown, the system must be operated.

Within the range of limits as below:

Content	Range	Note
Temperature of storage and transportation	-40°C -50°C	
Relative humidity of storage and transportation	20% - 93%(40°C)	
Atmospheric pressure	86 kPa - 106 kPa	
Adaptation capability of power	220V±22V, 50Hz ±1Hz	
Working humidity	35% - 80%	
Working temperature	10°C - 35°C	

【Warning】 To avoid the system be damaged by surroundings (moisture, dust, food, liquid, direct exposure to sunlight, and so on), you should place it in a ventilated and dry environment.

To avoid magnetic interference and damage, the system should stay away from other electric appliances (such as television, air-conditioner).

Please do not spill liquid or other stuff into the system for it is likely to cause short-circuit of internal components; furthermore, it might cause electric shock or fire.

【Watchful】 The notebook can not be booted in lower than normal temperature since it might result in a permanent breakdown. Therefore, please make sure the notebook stay in the room temperature (10°C and higher) for two

hours, at least.

Before Using the System

Before Using the System

【Alert】 If the notebook has been transported under temperature 10°C, it is necessary to keep it in room temperature 10°C ~ 35°C for two hours and more that prevents the notebook from power damage by low temperature.

【Watchful】 Before using the notebook, you need to make sure the connection, power supply and other items are all in compliance with the requirements in the manual.

Moving, Transportation, Storage

【Watchful】 Please be noted to gently handle the notebook while moving it. The products should be packed in original boxes, following the diagram of packing and storing instructions to stack goods, and shipped in sealed cartons. Packing materials should be stored safely beyond where children can reach, to avoid anything risky happening.

In compliance with national standard (GB/T9813-2000), 《Standard Specification for Micro notebook》 has given related description that the notebook transported at temperature lower than 10°C needs to be stay over two hours in the room temperature 10°C -- 35°C before using. It is to prevent the notebook from power damage by low temperature. During this period, please do not open the package to let the notebook naturally back to normal temperature that will avoid power damage happening to the notebook by frosting and

liquefying after rapid warming.

Battery

【Watchful】 Wrong replacement of lithium battery could make a risk of explosion. Make sure to install and replace lithium battery under the instructions of a professional technician. Only the same or similar models of batteries, produced or recommended by original manufacturer, are allowed for replacement. Inappropriate disposal of battery will seriously pollute the environment that you must carefully handle the recycling of used batteries. In order to support the environmental protection, please properly return used batteries back to our After-sales & Maintenance Department for recycling.

1.4 Notice for using notebook batteries-Please read it carefully.

Please follow the following rules for make good use of batteries.

New battery:

You have to use up new battery before recharging.

The lifetime of battery:

Wrong application and maintenance might cut the battery's lifetime short. To have a longer the lifetime and better function of the battery, it had better to completely discharge the battery every 30 days, and recharge it to full.

Battery Meter :

There is an internal meter inside battery that can calculate the battery life. The battery meter decides when to stop charging or discharging dependent on the battery memory. The battery memory would be messed up by your frequently incomplete charging or discharging.

To enhance the battery meter's accuracy, you must make at least one complete battery discharging and recharging every 30 days, or at intervals of 20 incomplete discharging.

Due to the battery itself, the power is getting decreased while using, and getting shorter lifetime. It might happen to the battery that can't be charged to 100% full even in the warranty. Nevertheless, it won't influence its normal function.

To save battery life:

A. An Advanced Power Management:

Your notebook has the Advanced Power Management function that can slow down the speed of processors and peripheral components. This function is helpful to save the battery life.

B. LCD Brightness:

The LCD will exhaust a great deal of power that toning down its brightness will save the power.

C. Software and Chassis:

For other software and peripherals, it will be still using up electric power, even the program or device is not working. If you would like to save battery power, here is our suggestion:

- Please close Modem or other communication programs, if you are not using them.
- Remove the PC card from the slot when it is not in use.(Such as USB, hard disk)

Q & A :**How to discharge the battery completely?**

Let the notebook work by battery power until it automatically shuts down when low battery. Do not manually turn off the notebook, even a message appearing, or a beep alerting about the low battery power. You need to let the notebook stay on until it has used up all power, and automatically shuts down.

How to recharge the battery to full?

Generally, the battery indicator on the notebook is lighting that appears a fully charged battery. However, please refer to the description of power status indicators in the manual for actual situation.

How to maintain the battery?

You need to make at least one complete battery discharging and recharging every 30 days, or at intervals of 20 incomplete discharging.

Special Notice:

- The battery is only for the notebook.
- The replacement for wrong battery might cause explosion. Only the same or similar models of batteries, produced or recommended by original manufacturer, are allowed for replacement. Please do not disassemble the battery.
- Do not expose the battery to fire or water.
- Please do not let battery terminals contact with metal objects to prevent fire, burning or battery damage.
- Please be much careful handling a damaged or leaking battery. If you

accidentally touch battery fluid, you would immediately wash with soap and water. If your eyes contact with the fluid, please wash eyes with water for 15 minutes, and go to the hospital soonest.

- Do not charge the battery if in a high temperature environment.
- Please do not store the battery to the exposure of high temperature.

Power Supply

【Danger】 You need to use grounding plugs and sockets with certified three-core ground fault protection, and power plugs should eventually be connected to a well-grounded power supply. Good grounding is such an essential guarantee for your notebook's normal operation. You presume to change standard power cords that serious consequences might occur; meanwhile, the cord is not longer than 4.5 meters. Before plugging the power, please refer to the description of power plugs and sockets, to make sure power supply compliant with the notebook. Certified power supply and good grounding are important guarantee for your notebook's normal operation. Otherwise, serious consequences might occur.

【Danger】 Using the product during a thunderstorm might cause damage to the notebook, your personal or property safety. Therefore, do not use the notebook during a thunderstorm, and disconnect telephone, network, power cords and any possible conductors linking to outside. While thundering, do not plug and unplug the cords and cables.

【Alert】 Do not try plugging an 110V power cord to the 220V socket, nor change voltage switch of the mechanical power supply. Any change is likely to cause damage to your personal safety, or bring about an equipment breakdown.

【Watchful】 Please carefully check the randomly bundled AC power cords. Please contact your

Power cords for micro-notebook must meet the following safety standards:

- FCC Compliance and Certificate
- Power plug should be finally connected to the well-grounded power supply.
- Power plug must comply with GB 1002—1996、GB2099.1-1996

specification.

Ergonomics

【Reminder】 While you are operating the notebook or playing games, please arrange a good environment and set up notebook devices well that you will be in a comfortable and flexible situation. The following suggestion for you to obtain a more pleasant environment:

1. Support your back:

- Select a low-back chair.
- Adjust the height of table and chair that you can sit naturally

comfortable.

2. Keep your legs comfortable:

- Clean up beneath your table to let your legs easily move and

stretch.

- If you could not have legs comfortably rest on the floor, please use a stool.

3. Do not twist and bend your neck:

- Place your LCD display screen in the middle of your front. If you check the document more frequently than the screen, please consider to place the document directly in your front, and the screen slightly aside. You can consider using a holder to parallel the document with your eyes.
- Place the top of the screen close to the level of your eyes. Those who have astigmatism may need to lower the screen a little bit, or consult with qualified health professionals for prescribing appropriate eyeglasses while using the notebook.

4. Keep from eye fatigue:

- Keep at arm's length from the screen that you can comfortably sit in front of the screen.
- Stay away from glare. The display screen should be placed in a location away from the glare source, or you can use a curtain to adjust the lightness.
- Please do not forget cleaning the screen. You have to clean eyeglasses when wearing them.
- Please adjust the lightness, comparison and font size of the screen to status you feel most comfortable.
- While using keyboard and touch panel, please gently tap on buttons, keep hands and fingers relaxed, and mildly hit the keyboard.

- Please also mildly hit buttons while tapping touch panel, using joystick or other game controllers.
- When you are typing, please avoid resting your palms or wrists on the surface of large-angle objects; if necessary, please rest your palms when taking a break.
- Relax your hands and arms when stop typing. Do not rest on the edge of any objects, such as the edge of a table.
- Adjust your chair not pressing the back of your knees.

1.5 Safety Precautions.

1. Power socket should be installed near or aside the device, or close to a location where you can easily operate the device. Avoid forcedly pulling out the cord while unplugging. You must pull out the plug itself to ensure a higher safety and prevent electric shock. Please do not dismantle the power adapter.
2. Please do not let the product near water.
3. Please place the product on a firm support while installing. You may drop the product for misplacing on an unstable surface that causes serious damage.
4. Absolutely don't place the product in a hustle and bustle area lest electric cords would be squelched. Please place any objects on electric cords.
5. Follow up with all warnings and remarks on the product.
6. If you do not intend to use the product for a long time, please unplug the power to avoid the damage by temporary excessive voltage.
7. Absolutely don't spill liquid on the product that might cause fire or electric

shock.

8. When the following problems occur, please seek for professional service from qualified technicians:
 - a. When power cord or plug has been damaged or worn
 - b. Liquid has been spilled on the product.
 - c. The product has been spilled by rain or water.
 - d. When following through all instructions, the product still can't work normally
 - e. If the product is dropped , or the chassis damaged
 - f. If the product appears obvious damage
9. Please refer to the Appendix A - Product Specification about how to use the product and storage temperature. The product can't be used and stored beyond the temperature range for it might cause permanent damage.
10. Please stay away from water or other liquid when using a power adapter. Absolutely don't spill liquid on the power adapter.

Remark: All images in the manual are for reference only. It may vary subject to actual product.

2. Product overview

2.1 Brief Introduction

Product name: Notebook Computer

Series and type: Luffy plus S300i / Luffy plus S310i

Special Features:

The notebook adopts Intel/VI latest mobile computing technology to achieve more superior performance.

System Scalability:

The system allows upgrading the capacity of memory and hard drive. Therefore, please consult with local vendors, or visit assigned maintenance department for the operation while working on capacity expansion to exchange a substitute.

Clear LCD Screen:

The notebook has a LED backlit LCD screen, which brings you a clear, bright and colorful text and pictures.

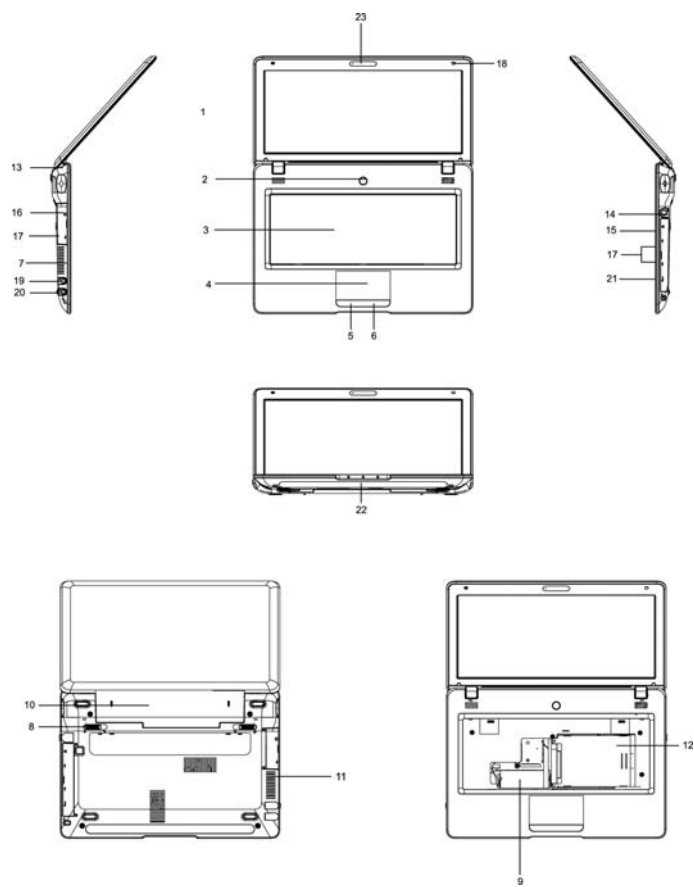
Communication Feature:

The notebook has a built-in LAN 802.11b/g/n Wireless Solution for network connection.

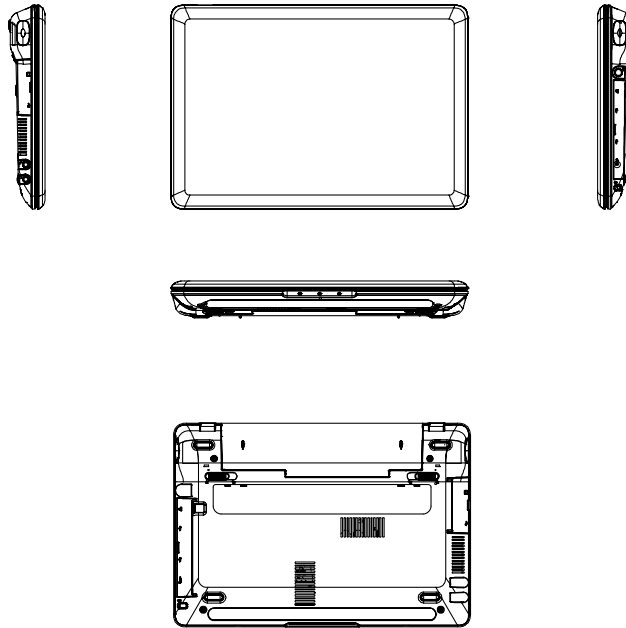
2.2 Introduction to parts & components

(Remark: The following diagrams are for reference only. It may vary subject to actual product.

Machine diagram



Machine diagram



1. Display Screen

Notebook's data and graphics will be displayed on the screen.

2. Power Button

It turns on/off the notebook.

3. Keyboard

Use the keyboard to input data.

4. Use the touch panel keyboard to input data.

Touch panel is a built-in pointing device, which supports similar function like mouse.

5. The Left Mouse Button

6. The Right Mouse Button

7. The Grid of Fan

The grid of fan is designed for heat proliferation. Please do not block this ventilation.

8. Battery Lock Bolt

Battery lock bolt can lock or unlock batteries.

9. Memory Cover

DDR Dynamic random access memory modules are installed after opening this cover.

10. Battery

It can be a power supply to the notebook, if no external power is connected.

11. The Grid of Fan

The grid of fan is designed for heat proliferation. Please do not block this ventilation.

12. Hard Disk Cover

A hard disk is installed after opening this cover.

13. Shaft

14. DC-IN Socket

It can connect to a power adapter.

15. RJ-45 Interface

16. VGA Port (D-Sub Port)

It can connect to the external display screen.

17. USB Port

It can connect to USB devices.

18. Screw holes

19. Microphone Jack

This jack is for external microphone.

20. Earphone Jack

This jack is for external earphone.

21. SD Card Slot

SD Card Reader

22. LED Indicator

Different lights represent respective status. (Please refer to next section).

23. Camera (Optional)

The video input device of the notebook.

Special Reminders

Please do not place any stuff between LCD screen and keyboard, such as pencil, documents, since they would scratch or damage the LCD screen. Please must not use corrosive cleaning lotion to wipe the LCD screen that will cause the screen damaged.

To prevent overheating of the system, please make sure do not block cooling vents of the system.

2.3 Open the package and check





Please carefully unpack the device and accessories. If anything missing or damaged, please immediately contact your vendor. Please keep original sheets of materials, in case of replacement.

Generally, there will be these components:

1. **Notebook**
2. **Power Adapter**
3. **User's Manual**
4. **Driver Disk**
5. **Battery**
6. **Warranty Card**
7. **Certificate(attached to the back of computer)**

3. Basic Information

3.1 System status indicator

LED Graphic symbol	Instructions
	Green light indicates the system is booting.
	Flashing red light indicates the battery is charging. No light indicates battery has been fully charged When the system is powered by battery, flashing red light indicates it is currently booting. But the battery is low capacity.
	The green light or flashing indicates that the system is reading CD-ROM / HD.
	The flashing green light indicates that the wireless network card is currently switched on. No light indicates that the wireless network card is currently switched off.

3.2 Turn off the notebook













After you finish your jobs, you can turn off the notebook, or let it enter Standby or

Hibernation mode:

Suspend Mode	Method	Rebooting or walking Method
Directly power off	Please abide by the shutdown procedure of the operating system. Thus, you can avoid losing data or damaging software. In case any hardware or software problems happen, and the system shuts down, you can press the power button to shut down the system.	Press the Power Button
Standby	According your setup in Windows, enter a Standby status by the following method: Close the upper cover of the notebook. Press the power button.	Press the Power Button
Hibernation	According your setup in Windows, enter a Standby status by the following method: Close the upper cover of the notebook. Press the power button.	Press the Power Button

3.3 Function Key

[Soft Keys (HOT-KEY)]

Icon	Key-Press	Function
	Fn + F1	Shutting off the display screen
	Fn + F2	Turn On / Off the wireless network card
	Fn + F3	Open E-mail
	Fn + F4	Open Internet Express
	Fn + F5	Decreasing the brightness of LCD
	Fn + F6	Increasing the brightness of LCD
	Fn + F7	Turn On / Off monitor
	Fn + F8	Loop switch provides you with three options of graphical output modes: "LCD only", "CRT screen only", and "LCD and CRT screens"
	Fn + F9	Open / Close touch panel
	Fn + F10	Turn On / Off mute
	Fn + F11	Decreasing sound volume of speakers
	Fn + F12	Increasing sound volume of speakers
<i>NumLk</i>	Fn + Ins	After the Num Lock key is locked, the indicator of numeral buttons is lighting that embedded digital keyboard in the built-in keyboard start working.
<i>Scr Lk</i>	Fn + Del	After the Scroll Lock key has been locked, a specific program will support the scrolling function.

3.4 Touch pad

Built-in touch panel is a PS / 2 compatible pointing device that you can feel its surface's moving, as long as you have a finger moving around the surface of touch panel, the cursor is following your finger to move around.

3.5 Display screen

To make you more comfortable, your notebook adopts TFT LCD screen, which supports high-resolution and true color capabilities. It brings you extraordinary visual impact.

Following these rules to extend the lifetime of display screen:

- 10) Adjust the screen brightness to lowest for the most comfortable viewing
- 11) While using the notebook on the table, please connect to an external monitor and turn off the notebook's screen
- 12) Do not turn off the power management option to enter a suspend mode
- 13) If you are using AC power, and you don't connect to an external monitor, please do not switch to the Suspend Mode when the notebook is off.

【Watchful】 To extend the battery lifetime, adjust the screen brightness to lowest on the premise of the most comfortable viewing that internal light source will consume less power.

3.6 LAN Card

The notebook is compliant with a built-in 10/100Base-TX standard LAN

card, plugging one end of LAN cable to the RJ-45 interface connector on the right side of your notebook. Thus, you can proceed to data transfer online.

To Turn On or Off Wireless LAN

Your notebook has installed a built-in wireless LAN card that please follow the operating system's instructions to set up a wireless network. (Please consult with your local dealers of wireless LAN service) It needs a while for your notebook to connect with a wireless network.

Connecting Through a Wireless LAN

A wireless network (Wireless LAN) environment is a network environment that enables communication between multiple computers at home or a small-size office through wireless LAN devices. Using the wireless network connections between the systems, you can use normal network functions such as sharing of files, folders and printers. Using computer-to-computer network (ad hoc) connections, you can access the Internet through a computer connected directly to the Internet even if your computer is not directly connected to the Internet.

RE.: A wireless LAN interface is an optional device that you can select when you purchase this product. You can connect to the Internet over a wireless connection when your computer has a wireless LAN (WLAN) device. To view the installed wireless LAN card, click Start > Control Panel > System > Hardware tab > Device Manager. The images actually displayed may differ from the figures shown in this section according to the installed device and the connection state

To turn off the Wireless :LAN If the wireless LAN is turned on, the computer consumes more power, therefore shortening the amount of time you can run on battery. If you are not using the WLAN or if you are in an environment that does not provide WLAN, you are recommended to turn off the WLAN by

pushing the WLAN button on the computer.

Wireless network connections can be classified into two categories :

1.Access Point (AP)

You can connect to an AP to use the network. This is possible only in an environment equipped with an AP.

RE. : What is an Access Point (AP)?An AP is a network device that bridges wired and wireless LANs, and corresponds to a wireless hub in a wired network. You can connect multiple wireless LAN installed computers to an AP.


2.Computer-to-computer (ad hoc)

This is also called a peer-to-peer network. In computer-to-computer wireless networks, you can wirelessly connect 2 or more computers that have wireless LAN modules.

Connecting to an Access Point (AP)

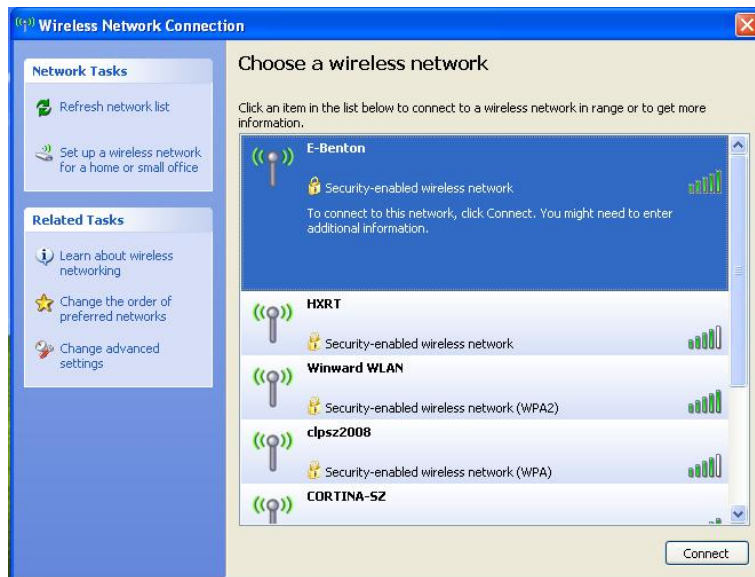
This section describes how to connect to an AP. You can use the network when you are connected to an AP.

NOTICE: The connection setup is described for a computer running on Windows XP.

1.Right-click on the Wireless Network Connection () icon on the taskbar, and select View Available Wireless Networks.



2. Select an AP (E.g. E-Benton) to connect to and click Connect. When the network key dialog box appears, enter the network key and click Connect.



RE. When a network key is not defined for a selected AP, click on Link to display the warning message box. Then click Connect again in the box. Now when the network key dialog box appears, enter the network key and click Connect.



RE. : Checking the connection status


Move the mouse pointer over the Wireless Network Connection icon on the taskbar, and the connection status is displayed.

Connecting to computer-to-computer networks (peer-to-peer or ad hoc)

In computer-to-computer wireless networks, you can wirelessly connect 2 or more computers that have wireless LAN modules. Using this method, a computer that is not connected to the Internet can share the Internet by accessing another computer connected to the Internet.

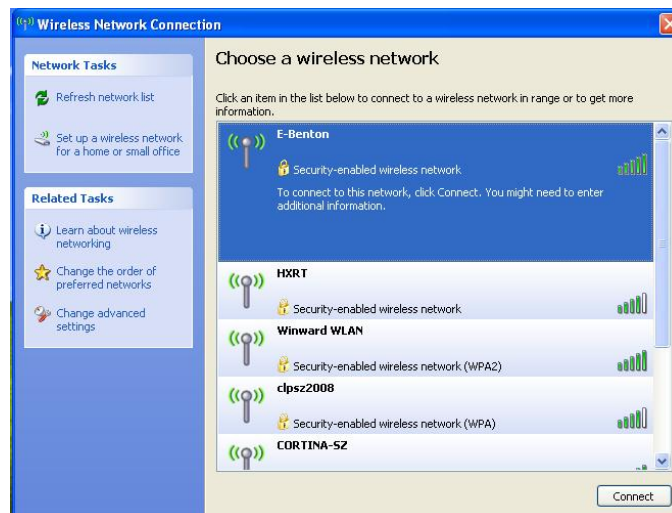
You can connect by completing the following two steps:

Step 1. Setting up a computer-to-computer network

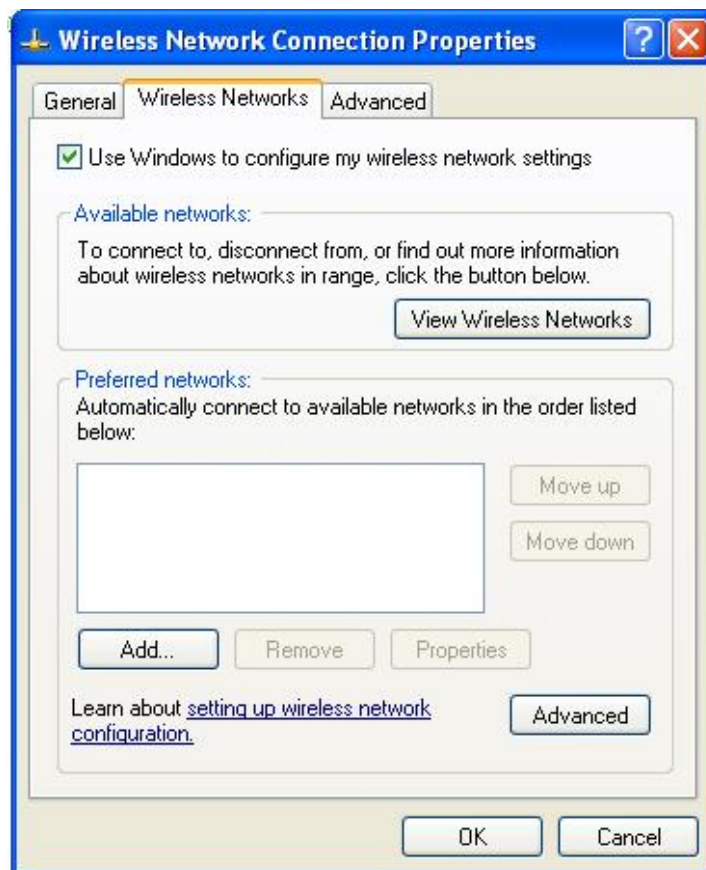
1. Right-click on the Wireless Network Connection () icon on the taskbar, and select View Available Wireless Networks.



2. Select an AP (E.g. E-Benton) to connect to and click Connect. When the network key dialog box appears, enter the network key and click Connect.



On the Wireless Network tab, click Advanced.



3. Clear 'Automatically connect to non-default network' check box, if it is selected.

Select 'Computer-to-computer (ad hoc) networks only', and click Close.

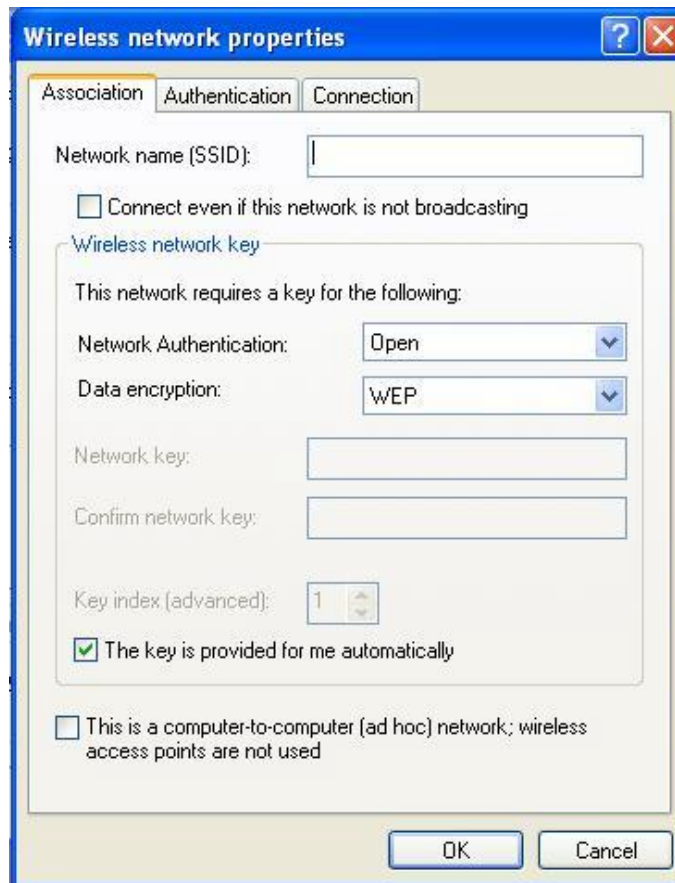
4. In the Wireless Networks tab, click Add.

5. Enter the network name (e.g. E-Benton), and unselect 'The key is provided for

me automatically'. Enter the encryption key in the Network key field, and click OK.

6. Check that the configured network name (e.g. E-Benton) is in the 'Preferred networks' item, and click OK.


Now your wireless network setup has been completed ◦



The image shows a Windows XP-style dialog box titled "Wireless network properties". It has three tabs: "Association", "Authentication", and "Connection". The "Authentication" tab is selected. Inside the dialog, there is a text field for "Network name (SSID)". Below it is a checkbox labeled "Connect even if this network is not broadcasting". A section titled "Wireless network key" contains the text "This network requires a key for the following:". Below this text are two dropdown menus: "Network Authentication:" set to "Open" and "Data encryption:" set to "WEP". There are two text fields for "Network key:" and "Confirm network key:". Below these is a "Key index (advanced):" spinner set to "1". A checkbox labeled "The key is provided for me automatically" is checked. At the bottom, there is a checkbox labeled "This is a computer-to-computer (ad hoc) network; wireless access points are not used". At the very bottom of the dialog are "OK" and "Cancel" buttons.

RE.: To prevent a network connection from an unauthorized user, it would be better to configure a network key (encryption key). A network key consists of 5 or 13 alphanumeric characters (e.g. magic), or of 10 or 26 hexadecimal numbers (a hexadecimal number is represented by numbers '0' to '9' or letters 'a' to 'f')..

Step 2. Connecting to the configured computer

1. Right-click on the Wireless Network Connection () icon on the taskbar, and select View Available Wireless Networks.



2. Select the wireless network name (e.g. E-Benton) specified in "Connecting to computer-to-computer networks (peer-to-peer or ad hoc)", and click Connect..
3. Enter a cryptographic key in the network key box and click Connect.

When connected to the wireless network, the system displays Connected in the selected network of the Network Connection window.

3.7 Camera (optional)

There is a built-in camera on the top of the notebook screen that you can perform video communication with your family and friends through the camera and internet. The notebook has a microphone for sound recording.

4. BIOS (Basic Input and Output System) Setup

You can follow the instructions in the chapter how to enter the BIOS setup utility and set up hardware control options individually, as well as you will learn how to use built-in security protection settings.

【Configuration Utility】 It is a hardware status program in built-in BIOS (Basic Input and Output System) of the notebook, which can execute and maintain a lot of hardware function. You can operate this software by pull-down menus that allows you to easily configure and change settings.

BIOS settings have been defaulted by the manufacturer. However, you still can change BIOS settings if you need. When the hardware has been changed, for example, upgrading, emergent situation, or you decide to set up your own hardware configuration for specific demand, you may need to initiate the BIOS setup program.

BIOS lets you can set up a password to limit user's access. This is an important feature for the sake of mass data stored in the notebook nowadays. Unauthorized access can be prevented.

4.1 The ways to use BIOS Setup

Necessary situations for you to execute BIOS setup are:

When booting and testing problems happen to the system, you will be asked, a message appearing on the screen, to execute the BIOS setup.

You need to resume defaults.

You need to change settings of specific hardware.

You need to change settings to make the best system performance.

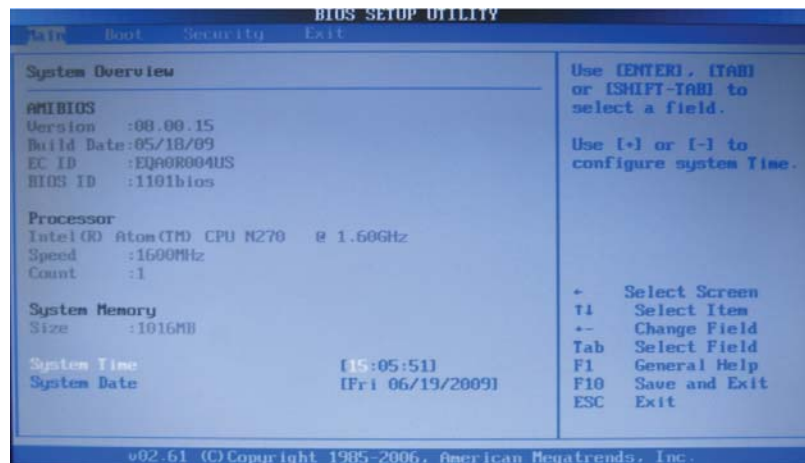
If executing BIOS setup, please F2 button while booting the system.

How to make selection

You must complete two or three levels of options to finish one item's settings, usually by these three levels of options: menu headings, pull-down menus and sub-menus

You can use the keyboard to move and select through keyboard. You can see the information on keyboard at the right lower corner of the screen.

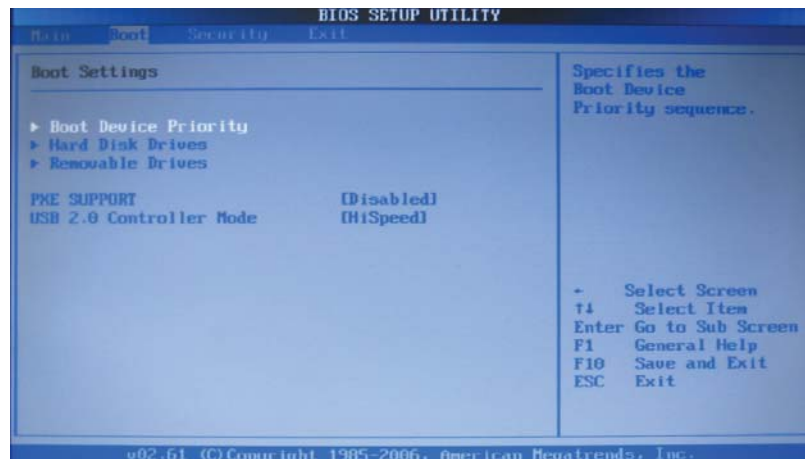
4.2 Main (Main Settings)



System Time: Use this item to set up of system time

System Date: Use this item to set up of system date.

4.3 Boot

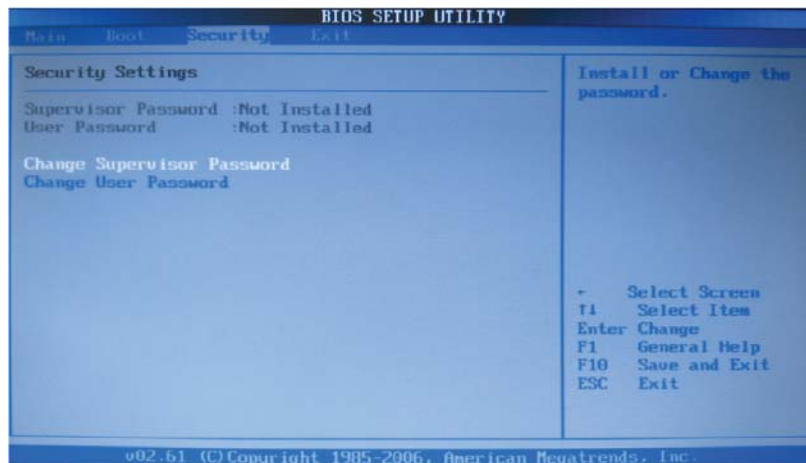


Boot Device Priority: Use this item to decide the priority of boot devices.

Hard Disk Drives: Use this item to select hard drives and to decide the boot device priority of hard drive.

Removable Drives: Use this item to select removable drives and to decide the boot device priority of removable drives.

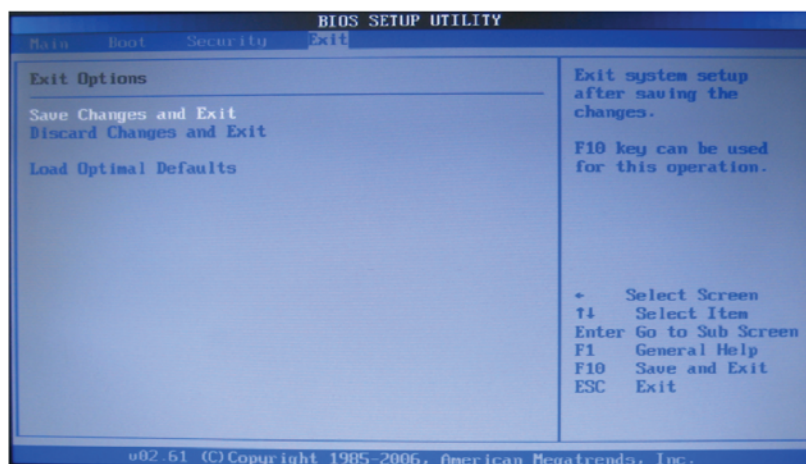
4.4 Security



Change Supervisor Password: Use this item to set up Supervisor Password

Change User Password: Use this item to set up User Password

4.5 Exit



Save Changes and Exit: Save the changes that you have made and exit.

Discard Changes and Exit: Discard the changes that you have made and exit.

Load Optimal Defaults: It resumes default settings.

5. Driver Installation and Applications

The CD-ROM only supports Windows 2000 and Windows XP. Open the bundled CD.

- Chipset is a chipset driver of the device;
- Video is a display driver;
- Audio is a sound card driver;
- WIFI is a wireless LAN card driver.

Click on corresponding icons, and then follow the instructions to finish the installation.

6. Troubleshooting

In the chapter, you will learn how to solve general problems of hardware and software.

Your notebook has been fully tested and compliant before shipment. However, incorrect operation or neglect during shipment will result in problems.

The chapter provides you with reference and information of general hardware and software problems that you may encounter.

When problems occur, you could try to solve them according to the chapter. If the problems could not be fixed, please contact your local vendors for more information and service.

6.1 Sound Problems

Mute

Please click twice the Speaker icon on lower right corner of taskbar, and you can see whether the speaker volume is off or not.

Please press function key to turn up volume.

Mostly, sound problems would be related to the software. If your notebook is previously normal, the cause of the problem might be incorrect software settings.

Sound-recording is not working

Please click twice the Speaker icon on lower right corner of taskbar, and you can see whether the speaker volume is off or not.

1. Click "Option", and then select "Property".
2. Select "Sound Recording", and then click "Confirm" button.
3. After clicking the "Confirm" button, a control panel of recording volume pops out.

6.2 Network Connection Problems

Wi-Fi wireless LAN can not find signal.

1. Please make sure you are available to wireless network access.
2. Please make sure that Wi-Fi function key is open
3. Please make sure to install Wi-Fi drive program correctly

Damaged Files

Please execute the Surface Scan of a disk scanning program to check

your disk. Click twice **【My Notebook】** , and right-click C; select **【Property】** , and enter the Error Status in the **【Tool】** tab to press **【Start Checking】** for executing disk scanning program.

6.3 Monitor Problems

Black screen happens when booting the system

- Please make sure the notebook is not in the “Standby” or “Hibernation” mode. Under these modes, monitor will be off to save power.
- Please press the Function Keys to tone up screen brightness.
- Please press the Function Keys to make sure the notebook is not in the CRT output mode only.
- It is illegible on the screen.
- Monitor resolution should be 1024x768 to show the best display quality.
 1. Please go to [Start>Set>Control Panel], and click twice the “Display” icon.
 2. Please go to the “Set” page to select resolution 1024x768.

Screen Flickering

It is normal to see screen flickering several times when booting or shutting down the system.

Screen dead pixel

Due to the limitation to LCD manufacturing craft, some pixels often can't display normal color on LCD (usually says as dead pixel). It is normal that please rest assured it is working. Please refer to National Standards of PRC GB/T9813-2000 for more details. Here is the related content of National Standards:

Proceed to inspection under these conditions:

Environment Temperature: 20°C~25°C

Light: 300 lx~700 lx

Visual Distance: 35cm

Visual Angle: sight and the screen surface cross at a 90 degree angle.

6.4 Memory Problems

After installing more memory, the POST (Power On Self Test) does not show additional memory capacity.

- The memory installation may be not successful.
- The memory is damaged.
- Your system may be not compliant with certain memory
- The operating system sends out an error message of insufficient memory.
- It is a usual problem with software or Windows.
- Please close application software you are not using, and reboot the system.
- Otherwise, you need to install more memory.

Special Statement

e-BENTON notebook can support various hardware peripherals, such as mouse, keyboard, printer and scanner. The company guarantees all bundled peripherals' compatibility and reliability that users just follow the instructions in the attached manual for correct application. If users purchase other peripherals from the third-party manufacturer, and connect the product to UROVO notebook, please follow the instructions of the third-party's manual to correctly connect

their peripherals and notebook, and install corresponding driver programs under their operating standards. Due to many peripheral makers in the market, we recommend consumers should purchase quality-guaranteed products from credible manufacturers, based on consumers' best benefit. If any problems happen to the third-party peripherals and UROVO notebook in compatibility, consumers should contact the third-party manufacturer for help.

For UROVO notebook's bundled software (All installed software in UROVO notebook is bundled item and free for users), we guarantee the software function and compatibility. Users please refer to the bundled software manual how to correctly use the software. In addition, a lot of software is available to the market now, and most of genuine software is applicable to UROVO notebook, unless special requirements are needed for the software. To ensure best benefit for consumers, users please purchase genuine software from authorized dealers. For users who purchase and install the third-party software, please follow the bundled software manual of the third party to correctly operate their software. If any problems happen to the third-party software and UROVO notebook in compatibility, consumers should contact the third-party manufacturer for help.

It is recommended for users to contact the third-party manufacturer or dealer that make sure their products have been fully tested before purchase their hardware and software, just to protect your rights. We do not guarantee the third-party hardware or software for client's replacement and return. We only can provide you with technical service.

Appendix A – Product Specification

	S310i
CPU	Intel® Atom™ N450 Processor 1.66GHz
Memory	Standard DDRII/1GB
Chipset	Intel® 82NM10 Express
Graphic Kernel System	Integrated® Graphics Media Accelerator 3150

Screen

12 inch (wide screen) TFT colorful LCD display with resolution 1366X768

Operating System

Windows XP Supported

Keyboard

Chocolate keyboard

Touch Panel

A touch panel with two buttons available

Storage Device

Card Reader Module (SD/MS/MMC/MS-pro)

Hard Disk

5400 rpm SATA interface, and optional 160GB-320GB

Sound Effect

Built-in stereo chipset for linking to external microphone/speaker/earphone

Camera

130M Pixels, and the notebook comes with a microphone

I/O interface

1 microphone jack

1 earphone jack

3 x USB2.0 interface connectors

1 external VGA connector

1 network jack (RJ-45)

1 Card Reader (SD/MS/MMC/MS-pro)

1 DC-IN socket

LAN

10/100M Ethernet

Wireless LAN

Support 802.11b/g/n (54Mbps) wireless protocol

Wireless LAN model: AzureWave AW-NE762H

Power

Power adapter output : DC19V, 3.42A

Battery

Wisdom lithium-ion battery will have 240-minute lifetime after 100% fully charged .Its real lifetime will depend on battery condition and your actual application.

Battery Description

The battery's lifetime can be influenced by the facts as below: frequency of

battery charge/discharge, operating system, setting of LCD screen, application programs (particularly video playback, such as DVD), settings of power management and applicable features. (Such as starting wireless feature)

Generally, due to limited lifetime, the battery of notebook is always decreasing in efficiency and application with more frequent use .It is a normal consumption of the battery.

Size

It is about 300mm (W) x 206mm (D) x 35mm (H)

Weight

It is about 1.5KG (6-cell battery included)

Remark: Weight shown here is merely covering standard unit and for your reference only. The actual weight may vary subject to accessories/materials.

Notice: Based on notebook quickly updating specification and accessories, the product specification is subject to change without notice. It may vary subject to actual product.

Winward Industrial Ltd.

Room7,P Floor,Tower A,Huang Hom Commercial Centre,39Ma Tau Wai Road,
Kowloon,Hong Kong

Tel:(852)2330-7318

Fax:(852)2330-4259
