

Micro Rig Fueler

Remote Control Vehicle

User Guide



SAVE THESE INSTRUCTIONS.
READ COMPLETE INSTRUCTIONS BEFORE USE.

#XC6373

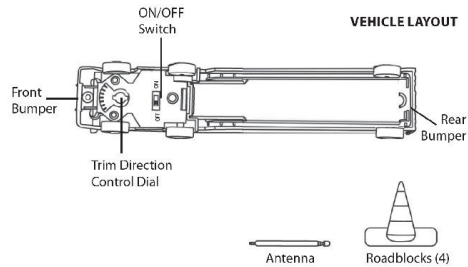
© 2011 EB Excalibur, Inc.

XC6373(S0)EXC.indd 1

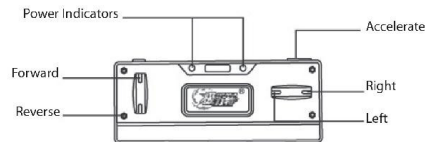
XC6373(S0)EXC
5 X 7 6/27/11

7/22/11 10:31 AM

Congratulations on your new EXRC™ purchase! EXRC™ trucks dominate the road with maximum power. Now that you're an honorary EXRC™ trucker, we recommend reading through this manual thoroughly before attempting your haul. Inside this manual you will find driving control tips, safety precautions and care instructions to keep your EXRC™ vehicle in tip-top shape. Follow the instructions, and use your EXRC™ truck to cruise the open road. Put it in drive, and enjoy the ride!



CONTROLLER LAYOUT



2

XC6373(S0)EXC.indd 2

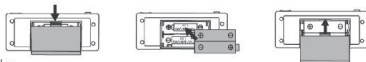
7/22/11 10:31 AM

BATTERY INSTALLATION

This product requires the following batteries (not included):
2 AA batteries - Remote 1 AA battery - Vehicle

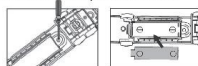
Remote Control:

Using a Phillips head screwdriver, remove the screw from the battery compartment cover on the controller. Insert the batteries, making sure to follow the polarity (+ and -) marked on the product. Replace the battery compartment cover and secure in place with the screw.



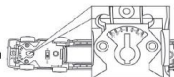
Vehicle:

Using a Phillips head screwdriver, remove the screw securing the battery compartment cover on the vehicle. Push down on the compartment cover and lift up. Insert the battery, making sure to follow the polarity (+ and -) marked on the product. Flip the battery cover down and secure in with the screw.



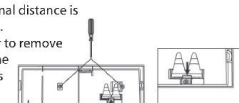
TRIMMING VEHICLE

If you notice your vehicle drifting to the left or right when you try to drive in a straight line, adjust the Trim Direction Control dial located on the bottom of the car by moving it left or right.



HOW TO DRIVE

- **POWER** - Slide the ON/OFF switch on the bottom of the vehicle to ON.
- **FORWARD/BACK** - Push the left controller joystick forward to move the car forward. Push the left joystick back to move the car backwards.
- **LEFT/RIGHT** - Push the right controller joystick control the right/left direction of the vehicle.
- **RANGE** - The maximum operational distance is a radius of approximately 25 feet.
- **ROADBLOCKS** - Use a screwdriver to remove the screws from the bottom of the box and release the vehicle. Press in the direction of the arrow to release the roadblocks.



3

XC6373(S0)EXC.indd 3

7/22/11 10:31 AM

CARE & HANDLING

- Do not submerge in water or other liquids.
- Do not disassemble the product for any reason.
- Do not expose to extreme temperatures.
- Do not drop, throw, smash or otherwise cause physical shock.
- Clean using only a slightly damp cloth.
- Do not use cleaners with chemical agents.
- Do not short-circuit the battery terminals.

CAUTION - Battery Safety Information

- Non-rechargeable batteries are not to be recharged
- Rechargeable batteries must be removed before recharging
- Rechargeable batteries should only be recharged under adult supervision
- Do not mix alkaline, standard (carbon-zinc), or rechargeable (nickel-cadmium) batteries
- Exhausted batteries are to be removed
- Do not mix old and new batteries
- Do not dispose of product in fire; batteries may explode or leak
- If this product will not be used for an extended period of time, remove the batteries from the product
- The supply terminals are not to be short-circuited
- Batteries are to be inserted with correct polarity
- Clean the battery contacts and also those of the product prior to battery installation
- As always, dispose of batteries in an eco-friendly manner.

FCC PART 15 COMPLIANCE

The device complies with Part 15 of the FCC Rules. Operation is subject to the following two conditions: (1) this device may not cause harmful interference, and (2) this device must accept any interference received, including interference that may cause undesired operation. Changes or modifications not expressly approved by the party responsible for compliance could void the user's authority to operate the product.

Note: This equipment has been tested and found to comply with the limits for a Class B digital device, pursuant to Part 15 of the FCC Rules. These limits are designed to provide reasonable protection against harmful interference in a residential installation. This equipment generates, uses and can radiate radio frequency energy and, if not installed and used in accordance with the instructions, may cause harmful interference to radio communications. However, there is no guarantee that interference will not occur in a particular installation. If this equipment does cause harmful interference to radio or television reception, which can be determined by turning the equipment off and on, the user is encouraged to try to correct the interference by one or more of the following measures:

- Reorient or relocate the receiving antenna.
- Increase the separation between the transmitting equipment and receiver.
- Connect the equipment into an outlet on a circuit different from that to which the receiver is connected.
- Consult the dealer or an experienced radio technician for help.



EB Excalibur, Inc.
Miami, Florida
www.EBExcalibur.com
service@ebexcalibur.com

Distributed in the United Kingdom by:
EB Brands UK, Worcester WR4 9FA

Actual product may differ slightly from photography.

XC6373(S0)EXC



XC6373(S0)EXC.indd 4

7/22/11 10:31 AM