

**FCC – Test Report**Date: 2011-10-31

No. 55628-1

Page 1 of 15

**LABORATORY - REPORT**

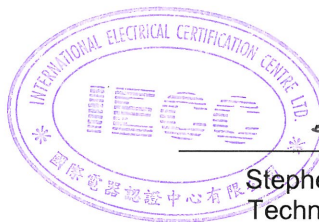
**APPLICANT:** EB BRANDS (HK)  
**ADDRESS:** Unit 705 & 706, Enterprise Square, Phase 1  
Tower III, 9 Sheung Yuet Road  
Kowloon Bay, Kowloon  
Hong Kong  
**DATE OF SAMPLE RECEIVED:** 2011-10-21  
**DATE OF TESTING:** 2011-10-26  
**DESCRIPTION OF SAMPLE:**  
Product: 1:24 Hummer  
Model number: 5857  
Product class: Low Power Communication Device – Transmitter (27 MHz)  
FCC ID number: XRB5857BK27TX  
Rating: DC 3V (AA size battery x 2)

**CONDITION OF TEST SAMPLE:** The received sample was under good condition.

**INVESTIGATIONS REQUESTED:** Measurements to the relevant clauses of F.C.C. Rules and Regulations Part 15 Subpart C - Intentional Radiators.

**RESULTS:** See the attached sheets.

**CONCLUSIONS:** From the measurement data obtained, the tested sample was considered to have COMPLIED with the requirements for the relevant clauses of Federal Communications Commission Rules as specified above.



Stephen C.N. Wong  
Technical Manager

## FCC – Test Report

No. 55628-1

Date: 2011-10-31

Page 2 of 15

### TABLE OF CONTENTS

1. Laboratory Report Cover
2. Table of Contents
3. Test Location and Summary of Test Results
4. Test Equipment List
- 5-6. Radiated Emission Test Setup
7. Conducted Emission Test Setup
8. Test Procedure
9. Test Results
- 10-14. Measurement Data
15. Photo of sample

## FCC – Test Report

No. 55628-1

Date: 2011-10-31

Page 3 of 15

### Test Location

International Electrical Certification Centre Ltd.  
Units 602-605, 31 Lok Yip Road, On Lok Tsuen, Fanling, N.T., Hong Kong  
Tel : +852 23052570  
Fax : +852 27564480  
Email : [info@iecc.com.hk](mailto:info@iecc.com.hk)

### Summary of Test Results

#### Radiated Emission:

Test result: O.K.  
Test data: See attached data sheet

#### Conducted Emission:

Test result: Not Applicable  
Test data: Not Applicable

#### Measurement of Emissions within Band Edges

Test result: O.K.  
Test data: See attached data sheet

**FCC – Test Report**Date: 2011-10-31**No. 55628-1**

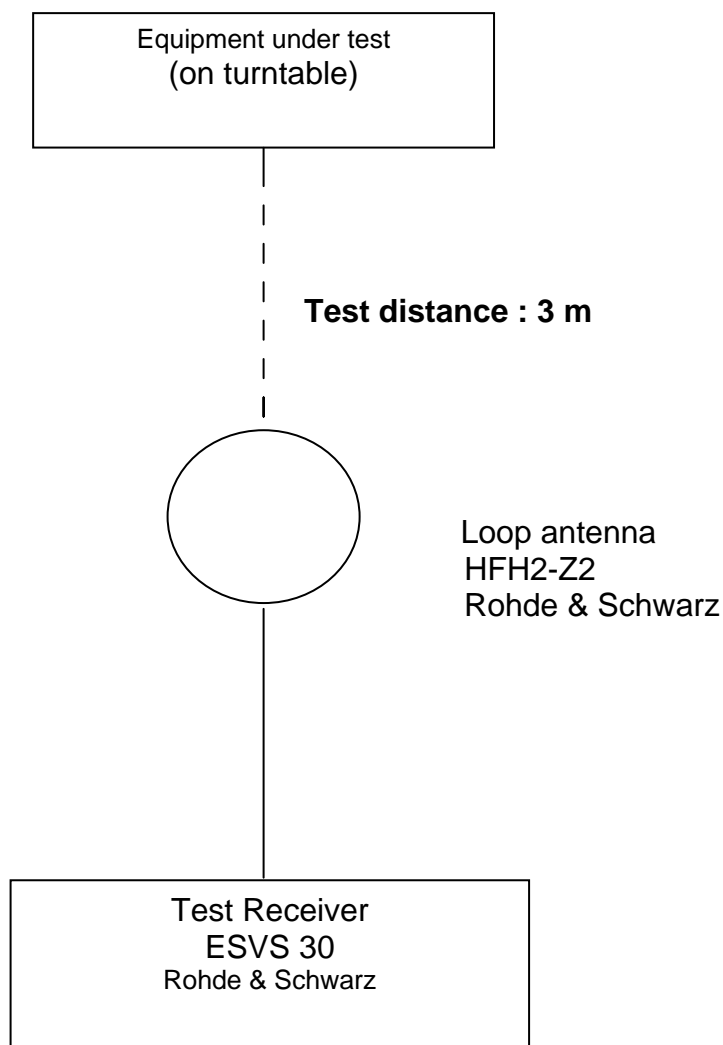
Page 4 of 15

**TEST EQUIPMENT LIST**

| Equipment                      | Manufacturer    | Model    | Serial No. | Last Calibration Date | Next Calibration Date |
|--------------------------------|-----------------|----------|------------|-----------------------|-----------------------|
| Test Receiver                  | Rohde & Schwarz | ESVS 30  | 100388     | 09/08/2011            | 08/08/2012            |
| Loop Antenna                   | Rohde & Schwarz | HFH2-Z2  | 871336/48  | 17/11/2009            | 16/11/2012            |
| Antenna (30 - 1000MHz)         | Schaffner       | CBL6111C | 2791       | 30/09/2010            | 29/09/2012            |
| Antenna Mast System            | Schwarzbeck     | AM9104   | --         | --                    | --                    |
| Turntable with Controller      | Drehtisch       | DT312    | --         | --                    | --                    |
| Spectrum Analyzer with Q. Peak | Advantest       | R3132    | 140101852  | 09/08/2011            | 08/08/2012            |

**FCC – Test Report****No. 55628-1**Date: 2011-10-31

Page 5 of 15

**Radiated Emission Test Setup ( 9kHz – 30MHz)**

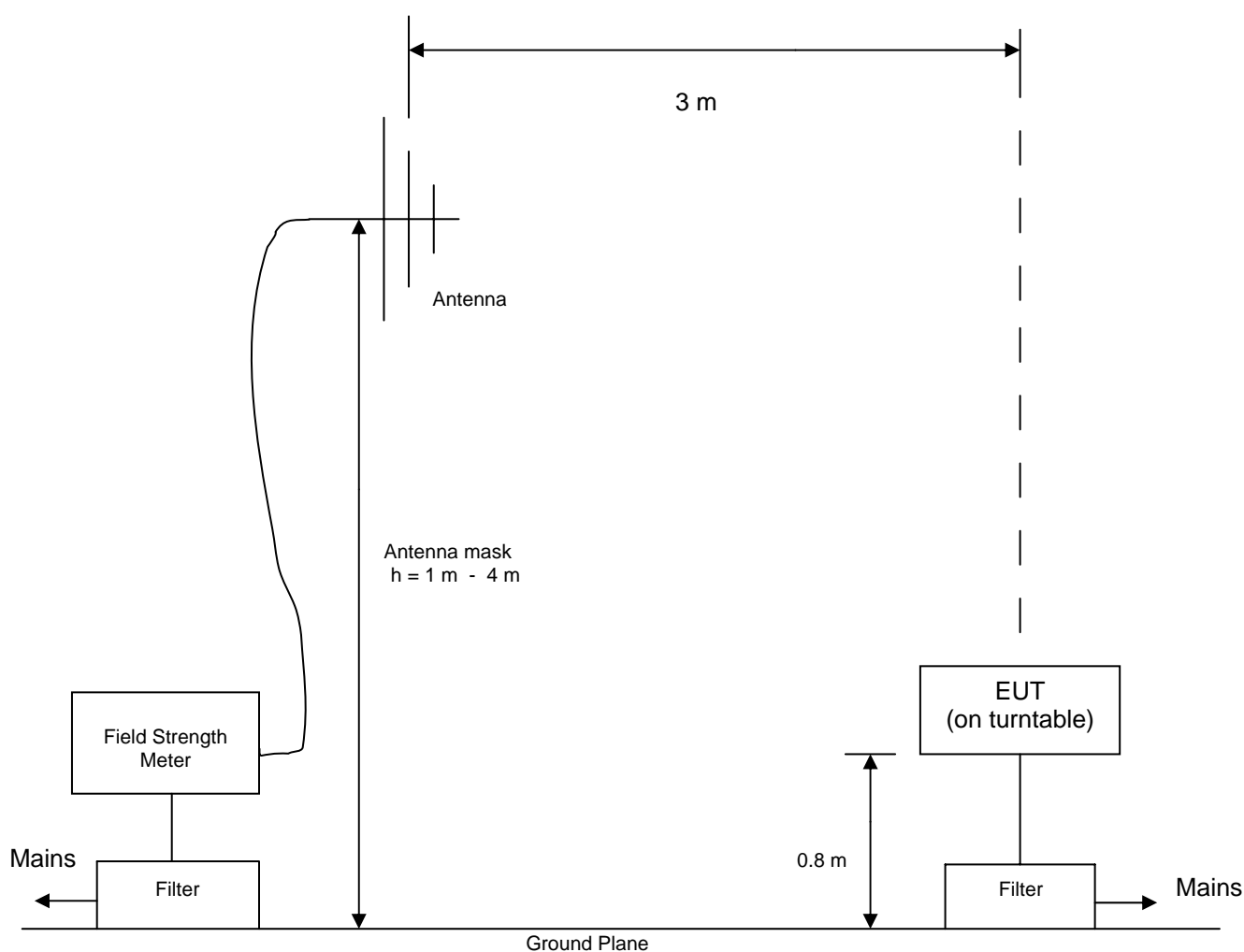
## FCC – Test Report

No. 55628-1

Date: 2011-10-31

Page 6 of 15

### Radiated Emission Test Setup (3 m distance) (> 30MHz)



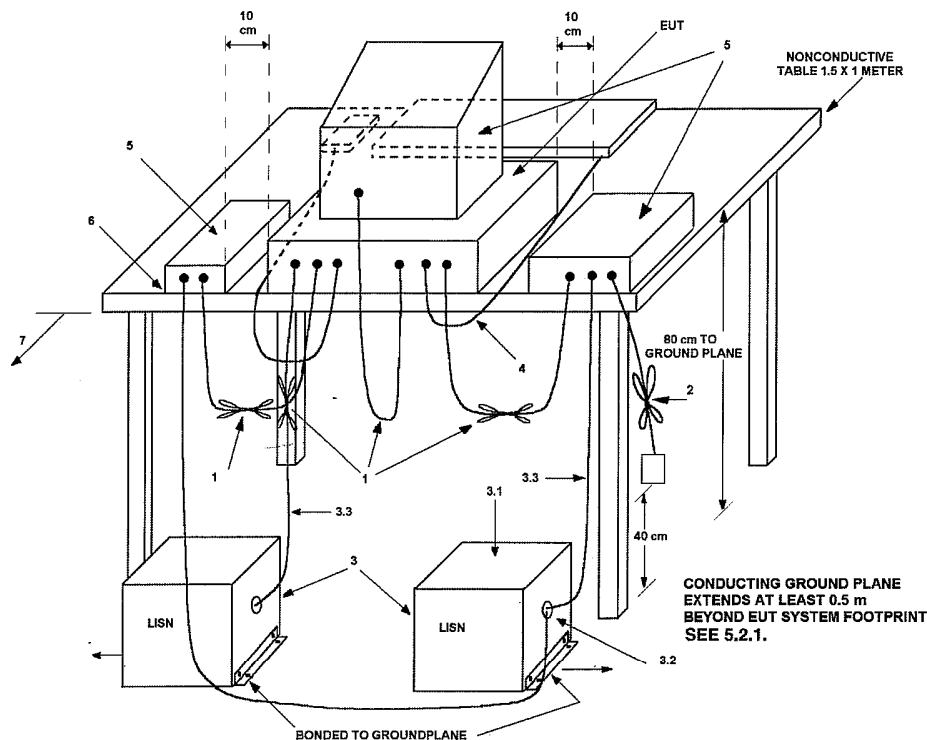
# FCC – Test Report

No. 55628-1

Date: 2011-10-31

Page 7 of 15

## Conducted Emission Test Setup



### LEGEND:

- 1) Interconnecting cables that hang closer than 40 cm to the groundplane shall be folded back and forth in the center forming a bundle 30 to 40 cm long (see 6.1.4 and 11.2.4).
- 2) I/O cables that are not connected to a peripheral shall be bundled in the center. The end of the cable may be terminated, if required, using the correct terminating impedance. The overall length shall not exceed 1 m (see 6.1.4).
- 3) EUT connected to one LISN. Unused LISN measuring port connectors shall be terminated in 50  $\Omega$ . LISN can be placed on top of, or immediately beneath, reference groundplane (see 5.2.3 and 7.2.1).
  - 3.1) All other equipment powered from additional LISN(s).
  - 3.2) Multiple outlet strip can be used for multiple power cords of non-EUT equipment.
  - 3.3) LISN at least 80 cm from nearest part of EUT chassis.
- 4) Cables of hand-operated devices, such as keyboards, mice, etc., shall be placed as for normal use (See 6.2.1.3 and 11.2.4).
- 5) Non-EUT components of EUT system being tested (see also Figure 13).
- 6) Rear of EUT, including peripherals, shall all be aligned and flush with rear of tabletop (see 6.2.1.1 and 6.2.1.2).
- 7) Rear of tabletop shall be 40 cm removed from a vertical conducting plane that is bonded to the groundplane (see 5.2.2 for options).

## FCC – Test Report

Date: 2011-10-31

No. 55628-1

Page 8 of 15

## Test Procedure

### Radiated Emission :

The EUT was tested according to ANSI 63.4-2003 for the requirements of FCC Part 15 Subpart C Section 15.209 and 15.227.

#### 1. Measurement Frequencies below 30MHz :

During the test, the sample was placed on a turn table and operated under various modes with supply from new batteries. The table is 0.8 meter and can rotate 360 degrees to determine the position of the maximum emission level. A loop antenna for the frequency range 9kHz - 30MHz, connected with 10 meters coaxial cable to the test receiver was used for measurement. The center of the loop was 1 m above the floor, positioned with its plane vertical at the specified distance and rotated about its vertical axis and placed horizontal for maximum response at each azimuth about the EUT.

An initial pre-scan was performed to find out the maximum emission level of the sample placed at 3 orthogonal planes. Final measurement was then performed to record the data for fundamental emission within the operation band and spurious emissions outside the band under worst-case condition for combination of the antenna orientation and turn table position.

Note : Fundamental emission for this pulse modulated device was measured with the peak detector function of the test receiver and was properly adjusted for the duty cycle correction factor as pulse desensitization to calculate the average emission value.

#### 2. Measurement Frequencies 30MHz – 1000 MHz :

During the test, the sample was placed on a turn table and operated with supply from new batteries. The table is 0.8 meter above the reference ground plane on the Open Area Test Site and can rotate 360 degrees to determine the position of the maximum emission level. A broad-band antenna for the frequency range 30 - 1000 MHz, connected with 10 meters coaxial cable to the test receiver was used for measurement. The antenna is capable of measuring both horizontal and vertical polarizations. The antenna was raised from 1 to 4 meters to find out the maximum emission level from the EUT.

An initial pre-scan was performed to find out the maximum emission level of the sample placed at 3 orthogonal planes. Final measurement (30 MHz –1000 MHz) was then performed to record the data for the emissions under worst-case condition for combination of the antenna orientation / height and turn table position.

Note : The Open Area Test Site located at IECC was placed on file with the FCC Pursuant to Section 2.948 of the FCC Rules (FCC Registration No. : 97774).

### Conducted Emission :

Not Applicable



## FCC – Test Report

No. 55628-1

Date: 2011-10-31

Page 9 of 15

## Test Results

### Radiated Emission :

|                                       |   |
|---------------------------------------|---|
| Test Requirement:                     | FCC Part 15 Subpart C Section 15.209 and 15.227   |
| Test Method:                          | ANSI C63.4 : 2003   |
| Deviations from Standard Test Method: | Nil   |
| Frequency Range:                      | 9kHz – 1000MHz  |
| Measurement Distance:                 | 3 m   |
| Detector:                             | Peak (for fundamental frequency)<br>Quasi-Peak (for frequencies outside the operation band) |

Refer to page 10 - 14 for measurement data.

### Conducted Emission :

Not Applicable

**FCC – Test Report**Date: 2011-10-31**No. 55628-1**

Page 10 of 15

**Radiated Emission**Measurement of Radiated Emissions  
FCC Part 15 Subpart C (15.227)

|                 |                   |
|-----------------|-------------------|
| IECC Ref:       | 55628-1           |
| Model:          | 5857              |
| Applicant:      | EB BRANDS (HK)    |
| Sample No.:     | 1                 |
| Set under test: | 1:24 Hummer       |
| Connected sets: | -                 |
| Operating mode: | Operate (forward) |

Test Equipment  
Receiver: ESVS 30 Rohde & Schwarz  
Antenna: HFH2-Z2 Rohde & Schwarz

**Radiation Measurement (3 m) below 30MHz****a. Fundamental Frequency**

| Frequency (MHz) | Maximum Test Result (dB(μV/m)) |           | FCC Limit (dB(μV/m)) |         |
|-----------------|--------------------------------|-----------|----------------------|---------|
|                 | Peak                           | Average * | Peak                 | Average |
| 27.13           | 59.5                           | 53.8      | 100                  | 80      |

Note : (1) The above peak value is the maximum value of the measurement in 3 orthogonal planes

(2) \* Calculation for radiation (average) :

Formula :

$$\text{Duty cycle} = (N1L1 + N2L2 + \dots + Nn-1Ln-1 + NnLn) / 100 \text{ or } T$$

where N1 is number of type 1 pluse, L1 is length of type 1 pulse, etc.  
T is the period of the pulse train (if less than 100 ms)

According to the time domain plots shown in page 11 & 12 :

$$\text{Duty cycle of the EUT} = (1 \times 1.79 + 2 \times 1.22 + 26 \times 0.61) / 38.55 = 0.521$$

$$\begin{aligned} \text{Av correction factor} &= 20 \times \log(0.521) \text{ dB} \\ &= -5.7 \text{ dB} \end{aligned}$$

$$\text{Radiation (average)} = \text{Radiation (peak)} + \text{Av correction factor}$$

$$\begin{aligned} \text{Radiation (average) of the EUT} &= 59.5 - 5.7 \text{ dB(}\mu\text{V/m)} \\ &= 53.8 \text{ dB(}\mu\text{V/m)} \end{aligned}$$

**b. Spurious Radiated Emissions**

The radiated emissions outside the operation band measured by a calibrated Loop Antenna were negligible (more than 20dB below limit).

# FCC – Test Report

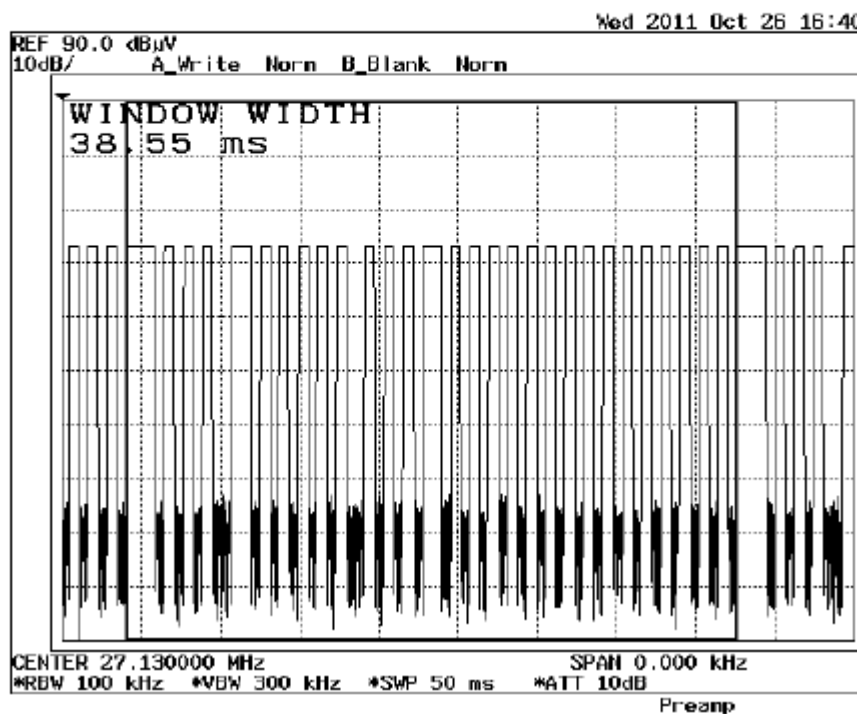
No. 55628-1

Date: 2011-10-31

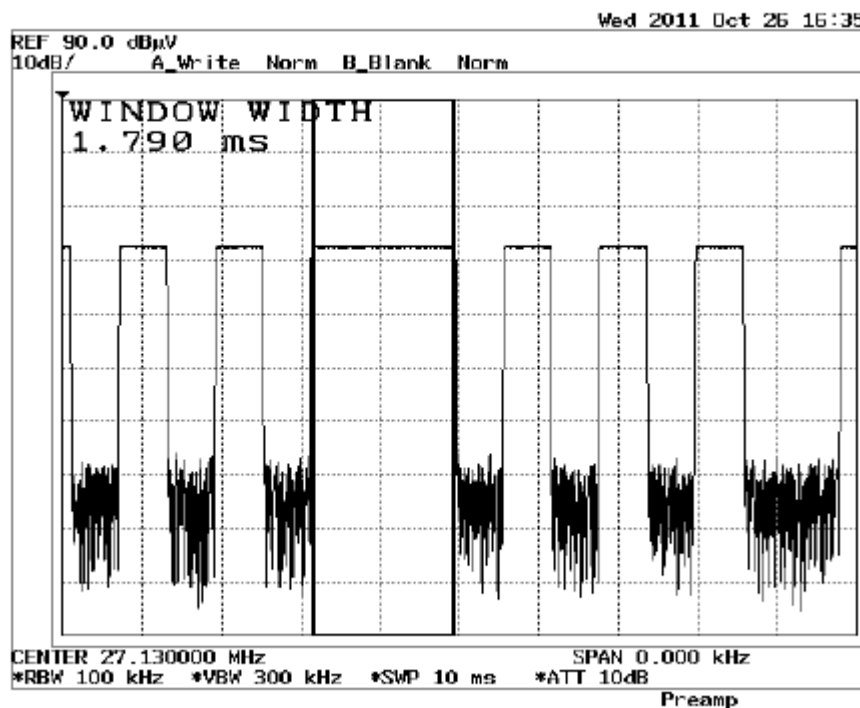
Page 11 of 15

## Radiated Emission

### Transmitter Emission - Time Domain Plots



Pulse cycle period = 38.55 ms



Pulse width = 1.79 ms (total number of pulse : 1)

# FCC – Test Report

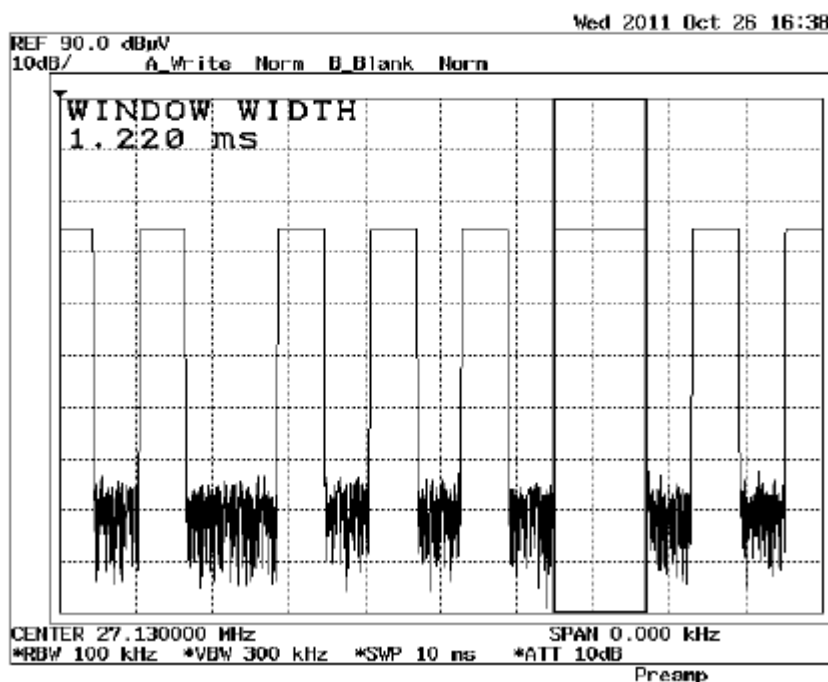
Date: 2011-10-31

No. 55628-1

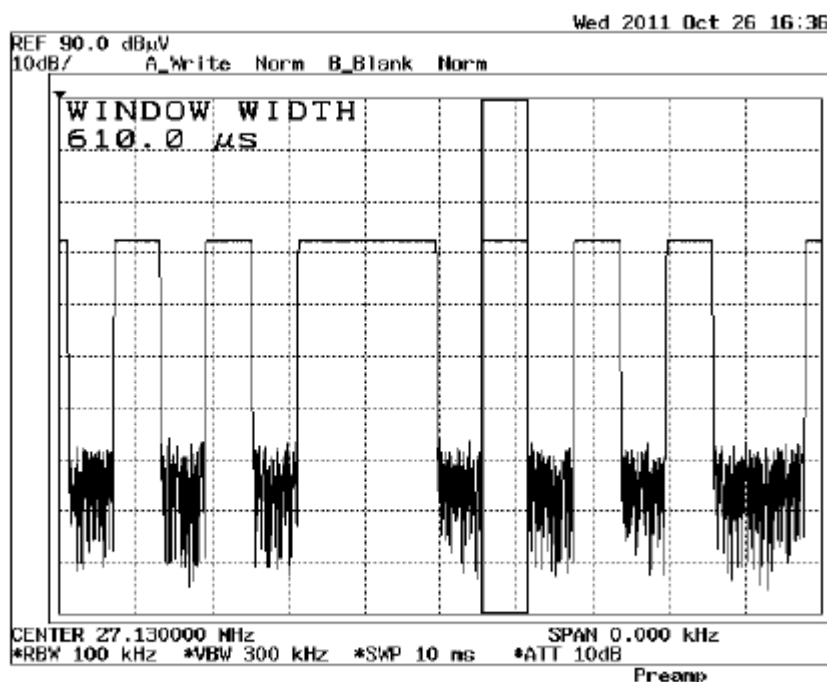
Page 12 of 15

## Radiated Emission

### Transmitter Emission - Time Domain Plots



Pulse width = 1.22 ms (total number of pulse : 2)



Pulse width = 0.61 ms (total number of pulse : 26)

Operator : WH

# FCC – Test Report

No. 55628-1

Date: 2011-10-31

Page 13 of 15

## Radiated Emission

Measurement of Radiated Emissions  
Acc: FCC Part 15 Subpart C (15.227 & 15.209)

|                 |                   |                                   |
|-----------------|-------------------|-----------------------------------|
| IECC Ref:       | 55628-1           | Test Equipment                    |
| Model:          | 5857              | Receiver: Rohde & Schwarz ESVS 30 |
| Applicant:      | EB BRANDS (HK)    | Antenna: Schaffner CBL6111C       |
| Sample No.:     | 1                 |                                   |
| Set under test: | 1:24 Hummer       |                                   |
| Connected sets: | -                 |                                   |
| Operating mode: | Operate (forward) |                                   |

| Frequency (MHz) | Horz. Reading<br>dB(μV) | Vert. Reading<br>dB(μV) | Corr.<br>Factor<br>(dB) | Horiz. Test<br>Result<br>dB(μV/m) | Vert. Test<br>Result<br>dB(μV/m) | Limit<br>dB(μV/m) |
|-----------------|-------------------------|-------------------------|-------------------------|-----------------------------------|----------------------------------|-------------------|
| 30              | < 16                    | < 16                    | 20.5                    | < 36.5                            | < 36.5                           | 40.0              |
| 54.3            | 21                      | 29                      | 8.7                     | 29.7                              | 37.7                             | 40.0              |
| 162.8           | < 16                    | < 16                    | 12.8                    | < 28.8                            | < 28.8                           | 43.5              |
| 244.2           | 28.5                    | 16                      | 14.2                    | 42.7                              | 30.2                             | 46.0              |
| 298.5           | 22                      | < 16                    | 15.8                    | 37.8                              | < 31.8                           | 46.0              |
| 325.6           | 25.5                    | 16.5                    | 16.2                    | 41.7                              | 32.7                             | 46.0              |
| 379.9           | < 16                    | < 16                    | 17.7                    | < 33.7                            | < 33.7                           | 46.0              |
| 407             | < 16                    | < 16                    | 19.0                    | < 35.0                            | < 35.0                           | 46.0              |
| 434.1           | 17.5                    | 17.5                    | 19.8                    | 37.3                              | 37.3                             | 46.0              |
| 500             | < 16                    | < 16                    | 20.6                    | < 36.6                            | < 36.6                           | 46.0              |
| 700             | < 16                    | < 16                    | 23.8                    | < 39.8                            | < 39.8                           | 46.0              |
| 1000            | < 16                    | < 16                    | 28.0                    | < 44.0                            | < 44.0                           | 54.0              |

Note : 1. Unless otherwise indicated, the recorded readings are in quasi-peak values.  
2. The above results were the worst case results with the sample positioned in all 3 axis during the test.  
The sample was positioned vertically and horizontally on the table for vertical and horizontal measurement respectively. The antenna of the sample was fully extended during the test.

Operator : WH

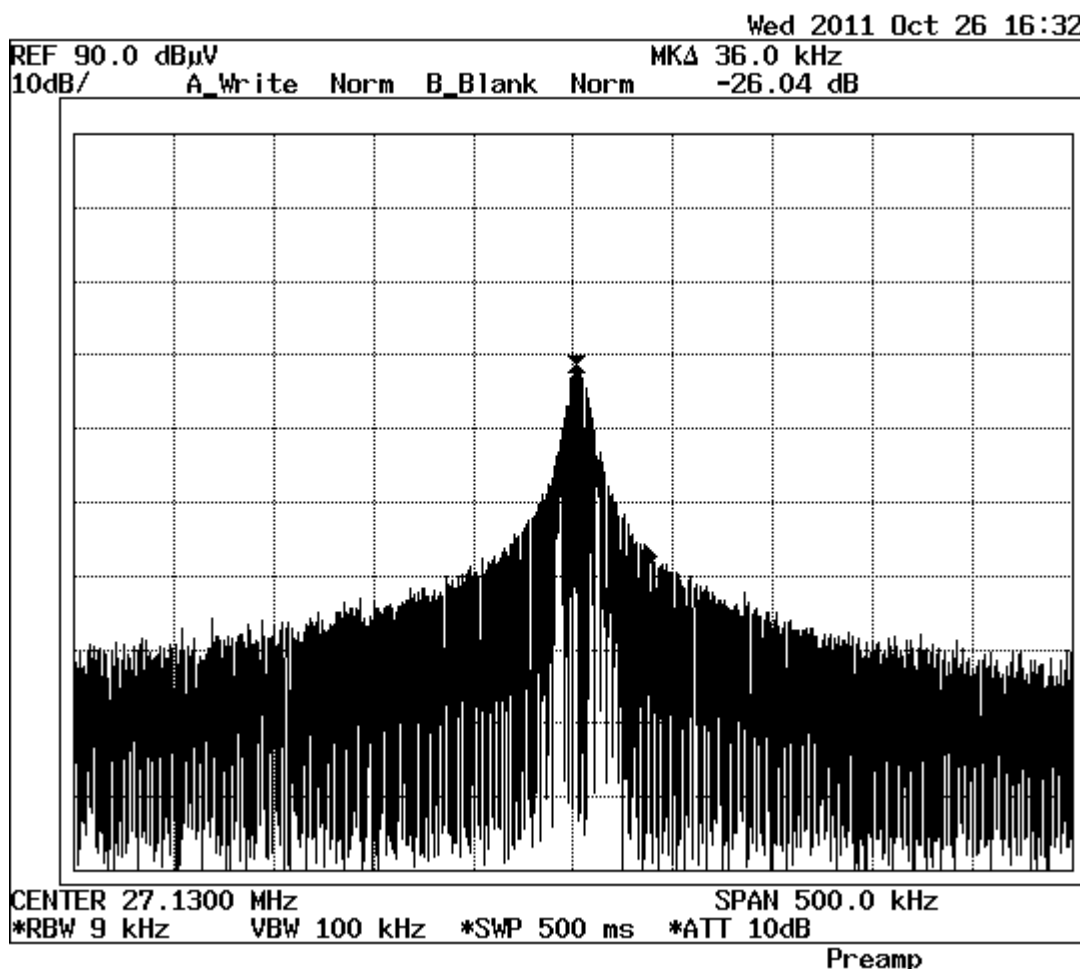
## FCC – Test Report

Date: 2011-10-31

No. 55628-1

Page 14 of 15

### Measurement Data of Emissions within Band Edges



Result : The field strength of any emission within the operation band did not exceed 80 dB(μV/m) for average value or 100 dB(μV/m) for peak value. Refer to page 10 for the recorded value for the emission at the fundamental frequency.

## FCC – Test Report

Date: 2011-10-31

No. 55628-1

Page 15 of 15

### Photo of Sample



- END -