

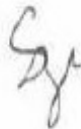


TEST REPORT No.: (5219)197-0305

## TEST REPORT

To:	NKOK, Inc.	To:	-
Attn:	--	Attn:	-
Address:	5354 Irwindale Ave Unit A Irwindale CA 91706	Address:	-
Fax:	626-330-1199	Fax:	-
E-mail:	<a href="mailto:testing@nkok.com">testing@nkok.com</a>	E-mail:	-
Folder No.:	--		
Factory Name:	--		
Location:	--		
Product:	RC Car MODEL: 81555BPS		
	Sample No:	(5219)197-0305	
	Date of Receipt:	July 22, 2019	
	Test Date(s):	August 07, 2019	
	Test Requested:	FCC Part 15 – 2017	
	Test Method:	ANSI C63.10 – 2013	
	FCC ID:	XQPRC061927TX	
The results given in this report are related to the tested specimen of the described electrical apparatus.			
<b>CONCLUSION:</b> The submitted sample was found to <b>COMPLY</b> with requirement of FCC Part 15 Subpart C.			
Authorized Signature:			
			
Reviewed by: Ivan Yeung		Approved by: Sze Tsz Man	
Date: September 04, 2019		Date: September 04, 2019	



**TEST REPORT No.: (5219)197-0305**

## Test Result Summary

EMISSION TEST			
Test requirement: FCC Part 15 – 2017			
Test Condition	Test Method	Test Result	
		Pass	Failed
Radiated Emission Test, 9kHz to 1GHz	ANSI C63.10	<input checked="" type="checkbox"/>	<input type="checkbox"/>
Frequency range of Fundamental Emission	ANSI C63.10	<input checked="" type="checkbox"/>	<input type="checkbox"/>
26dB Bandwidth of Fundamental Emission	ANSI C63.10	<input checked="" type="checkbox"/>	<input type="checkbox"/>
Duty Cycle Correction During 100mesc	ANSI C63.10	<input checked="" type="checkbox"/>	<input type="checkbox"/>

## Report Revision & Sample Re-submit History:

--



## TEST REPORT No.: (5219)197-0305

### Location of the test laboratory

### Bureau Veritas Hong Kong Limited

Room 03, 6/F, Westin Centre, 26 Hung To Road, Kwun Tong, Kowloon, Hong Kong

Radiated measurements are investigated and taken pursuant to the procedures of ANSI C63.10 – 2013. Semi-anechoic Chamber are set up for investigation and located at:

LG1/F., HKPC Building, 78 Tat Chee Avenue, Kowloon, Hong Kong

### List of measuring equipment

#### Radiated Emission

EQUIPMENT	MANUFACTURER	MODEL NO.	SERIAL NO.	CAL. DATE	CAL. DUE DATE
EMI TEST RECEIVER	R&S	ESU40	100190	12-JUN-2019	12-JUN-2020
SEMI-ANECHOIC CHAMBER	FRANKONIA	--	--	23-APR-2019	23-APR-2020
BICONICAL ANTENNA	R&S	HK116	100241	21-MAR-2018	21-MAR-2020
LOG-PERIODIC ANTENNA	R&S	HL223	841516/017	21-MAR-2018	21-MAR-2020
ACTIVE LOOP ANTENNA	EMCO	6502	9107-2651	30-OCT-2017	30-OCT-2019
STANDARD GAIN HORN (8.2 – 12.4GHZ)	ETS-LINDGREN	3160-07	00205404	04-SEP-2018	04-SEP-2020
STANDARD GAIN HORN (12.4 – 18GHZ)	ETS-LINDGREN	3160-08	002056363	26-SEP-2018	26-SEP-2020
DOUBLE RIDGED HORN (1 – 8.2GHZ)	ETS-LINDGREN	3117	00094998	30-AUG-2018	30-AUG-2020
STANDARD GAIN HORN (26.5 – 40GHZ)	ETS-LINDGREN	3160-10	00205696	03-OCT-2018	03-OCT-2020
DOUBLE RIDGED HORN (18-26.5GHZ)	ETS-LINDGREN	3116	00109210	05-OCT-2018	05-OCT-2020
MICROWAVE PREAMPLIFIER	COM-POWER CORPORATION	PAM-118A	551091	25-JUN-2019	25-JUN-2020
PREAMPLIFIER (18 -40GHZ WITH CABLE)	A.H. Systems, Inc.	Pam-1840VH	168	29-JAN-2019	29-JAN-2020
COAXIAL CABLE	Huber+Suhner	CNM-NMCMILX800-473	A2803 #0001	11-DEC-2017	11-DEC-2019

### Measurement Uncertainty:

MEASUREMENT	FREQUENCY	UNCERTAINTY
Radiated emissions	30MHz to 200MHz	±5.1dB
	200MHz to 1GHz	±6.2dB
	1GHz to 8.2GHz	±4.9dB
	8.2GHz to 12.4GHz	±4.4dB
	12.4GHz to 18GHz	±4.6dB

#### Remarks: -

N/A: Not Applicable or Not Available

The measurement instrumentation uncertainty would be taking into consideration on each of the test result

**BUREAU VERITAS HONG KONG LIMITED –**  
**Kowloon Bay Office**  
1/F Pacific Trade Centre,  
2 Kai Hing Road, Kowloon Bay,  
Kowloon, HONG KONG  
Tel: +852 2331 0888  
Fax: +852 2331 0889  
www.cps.bureauveritas.com

This report is governed by, and incorporates by reference, CPS Conditions of Service as posted at the date of issuance of this report at <http://www.bureauveritas.com/home/about-us/our-business/cps/about-us/terms-conditions> and is intended for your exclusive use. Any copying or replication of this report to or for any other person or entity, or use of our name or trademark, is permitted only with our prior written permission. This report sets forth our findings solely with respect to the test samples identified herein. The results set forth in this report are not indicative or representative of the quality or characteristics of the lot from which a test sample was taken or any similar or identical product unless specifically and expressly noted. Our report includes all of the tests requested by you and the results thereof based upon the information that you provided to us. Measurement uncertainty is only provided upon request for accredited tests. You have 60 days from date of issuance of this report to notify us of any material error or omission caused by our negligence or if you require measurement uncertainty; provided, however, that such notice shall be in writing and shall specifically address the issue you wish to raise. A failure to raise such issue within the prescribed time shall constitute your unqualified acceptance of the completeness of this report, the tests conducted and the correctness of the report contents.

**TEST REPORT No.: (5219)197-0305**

**Equipment Under Test [EUT]**

**Description of Sample:**

Model Name: RC Car  
Model Number: 81555BPS  
Additional Model Name: --  
Additional Model Number: --  
Additional Model information: --  
Rating: 3Vd.c. ("AA" size battery x 2)

**Description of EUT Operation:**

The Equipment Under Test (EUT) is a **NKOK, Inc.** of Radio Control toy. The transmitter is 2 sticks and operating at 27.146MHz. The EUT continues to transmit while sticks are being pushed or pulled, Modulation by IC, and type is pulse modulation.

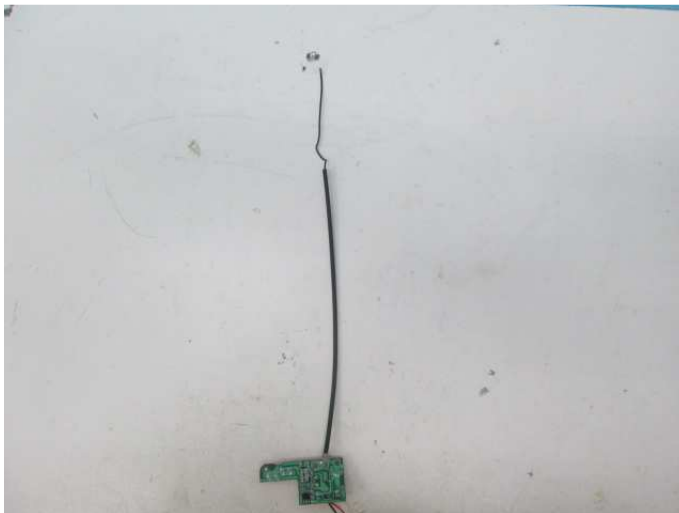
The transmitter has different control:

1. Left stick – control forward and backward
2. Right stick – control left and right

**Antenna Requirement (Section 15.203)**

The EUT is use of a permanently antenna. The antenna consists of 30cm long wire. It is soldered on the PCB. The antenna is not replaceable or user serviceable. The requirements of S15.203 are met. There are no deviations or exceptions to the specifications.

**Photo of Antenna**



## TEST REPORT No.: (5219)197-0305

### Test Results

#### Radiated Emissions (Fundamental)

Test Requirement: FCC Part 15 Section 15.227  
Test Method: ANSI C63.10 Clause 6.5  
Test Date(s): 2019-08-07  
Temperature: 24.0 °C  
Humidity: 56.0 %  
Mode of Operation: Transmission mode  
Tested Voltage: 3Vd.c. ("AA" size battery x 2)

#### Test Method:

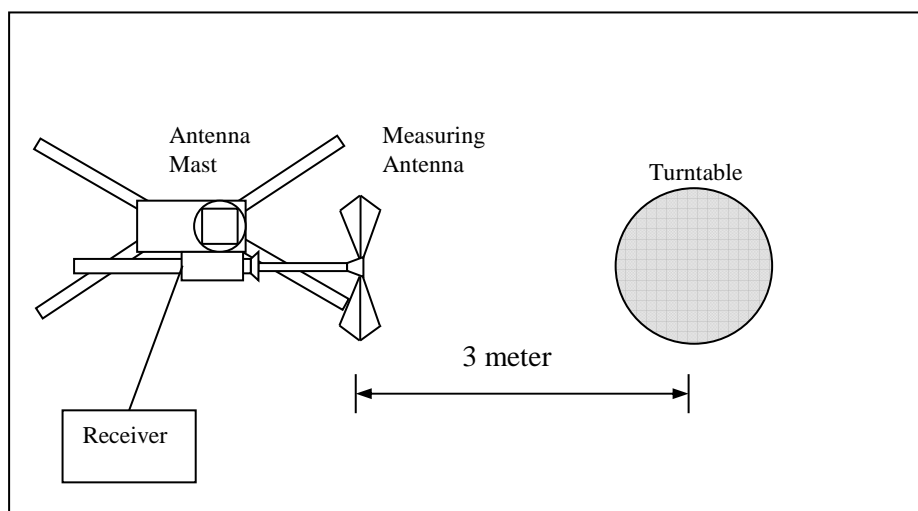
Radiated emissions measurements are investigated and taken pursuant to the procedures of ANSI C63.10 – 2013.

The equipment under test (EUT) was placed on a non-conductive turntable with dimensions of 1.5m x 1m and 0.8m high above the ground for measurement frequency below 1GHz and 1.5m high above the ground for measurement frequency above 1GHz. 3m from the EUT, a broadband antenna mounting on the mast received the signal strength. During the test, each emission was maximized by: having the EUT continuously working, investigated all operating modes, rotated about all 3 axis (X, Y & Z) and considered typical configuration to obtain worst position, manipulating interconnecting cables, For battery operated equipment, the equipment tests shall be perform using new battery. The turntable was rotated to maximize the emission level. The antenna was then moving along the mast from 1m up to 4m until no more higher value was found. Both horizontal and vertical polarization of the antenna were placed and investigated.

For below 30MHz, a loop antenna with its vertical plane is place 3m from the EUT and rotated about its vertical axis for maximum response at each azimuth about the EUT. And the centre of the loop shall be 1m above the ground.

Location: Hong Kong Productivity Council – Electromagnetic Compatibility Centre

#### Test Setup: Semi-anechoic chamber



## TEST REPORT No.: (5219)197-0305

### Limits for Field Strength of Fundamental Emissions [FCC 47CFR 15.227]:

Frequency Range of Fundamental [MHz]	Field Strength of Fundamental Emission [Peak] [μV/m]	Field Strength of Fundamental Emission [Average] [μV/m]
26.96 – 27.28	100,000 (100 dBμV/m)	10,000 (80 dBμV/m)

### Measurement Data

#### Test Result of (Transmission mode): PASS

#### Detection mode: Peak

Frequency (MHz)	Polarity (H/V) and degree	Field Strength at 3m (dBμV/m)	Limit at 3m (dBμV/m)	Margin (dB)
27.146	V	78.0	100.0	-22.0

#### Detection mode: #Average

Frequency (MHz)	Polarity (H/V) and degree	**Field Strength at 3m (dBμV/m)	Limit at 3m (dBμV/m)	Margin (dB)
27.146	V	74.9	80.0	-5.1

# For pulse modulated devices and using measuring equipment employing a peak detection mode, properly adjusted for such factor as pulse desensitisation.

\*\* Duty Cycle Correction =  $20\log(0.6985) = -3.1\text{dB}$

Note: Field Strength includes Antenna Factor and Cable Loss.

Receiver setting: RBW = 100KHz  
VBW = 300KHz



## TEST REPORT No.: (5219)197-0305

### Radiated Emissions (9kHz – 1GHz)

Test Requirement: FCC Part 15 Section 15.209  
Test Method: ANSI C63.10 Clause 6.5  
Test Date(s): 2019-08-07  
Temperature: 24.0 °C  
Humidity: 56.0 %  
Mode of Operation: Transmission mode  
Tested Voltage: 3Vd.c. ("AA" size battery x 2)

#### Limits for Radiated Emissions [FCC 47 CFR 15.209]:

Frequency Range [MHz]	Quasi-Peak Limits [μV/m]	Measurement Distance m
0.009-0.490	2400/F(kHz)	300
0.490-1.705	24000/F(kHz)	30
1.705-30	30	30
30-88	100	3
88-216	150	3
216-960	200	3
Above960	500	3

### Measurement Data

Test Result of (Transmission mode): PASS

Detection mode: Quasi-Peak

Frequency	Polarity (H/V)	Field Strength	Limit	Margin (dB)
Emissions detected are more than 20 dB below the limit line(s) in 9kHz to 30MHz				

## TEST REPORT No.: (5219)197-0305

### Measurement Data

Test Result of (Transmission mode): **PASS**

Detection mode: **Quasi-Peak**

Frequency (MHz)	Polarity (H/V)	Field Strength at 3m (dBμV/m)	Limit at 3m (dBμV/m)	Margin (dB)
54.292	H	23.8	40.0	-16.2
81.438	H	22.2	40.0	-17.8
108.584	H	24.8	43.5	-18.7
135.730	H	15.8	43.5	-27.7
162.876	H	18.8	43.5	-24.7
190.022	H	19.4	43.5	-24.1
217.168	H	13.2	46.0	-32.8
244.314	H	13.2	46.0	-32.8
271.460	H	15.8	46.0	-30.2
298.604	H	18.0	46.0	-28.0

Frequency (MHz)	Polarity (H/V)	Field Strength at 3m (dBμV/m)	Limit at 3m (dBμV/m)	Margin (dB)
54.292	V	37.8	40.0	-2.2
81.438	V	30.8	40.0	-9.2
108.584	V	31.7	43.5	-11.8
135.730	V	22.2	43.5	-21.3
162.876	V	27.6	43.5	-15.9
190.022	V	26.6	43.5	-16.9
217.168	V	13.2	46.0	-32.8
244.314	V	12.4	46.0	-33.6
271.460	V	14.7	46.0	-31.3
298.604	V	14.9	46.0	-31.1

Note: Field Strength includes Antenna Factor and Cable Loss.

Receiver setting: RBW = 120KHz  
VBW = 120KHz





## TEST REPORT No.: (5219)197-0305

### 26dB Bandwidth of Fundamental Emission

Test Requirement: FCC 47 CFR 15.227  
Test Method: ANSI C63.10 Clause 6.10  
Test Date(s): 2019-08-07  
Temperature: 24.0 °C  
Humidity: 56.0 %  
Mode of Operation: Transmission mode  
Tested Voltage: 3Vd.c. ("AA" size battery x 2)

### Test Method:

The bandwidth is measured at an amplitude level reduced from the reference level by a specified ratio. The reference level is the level of the highest amplitude signal observed from the transmitter at the fundamental frequency. Once the reference level is established, the equipment is conditioned with typical modulating signal to produce the worst-case (i.e. the widest) bandwidth.

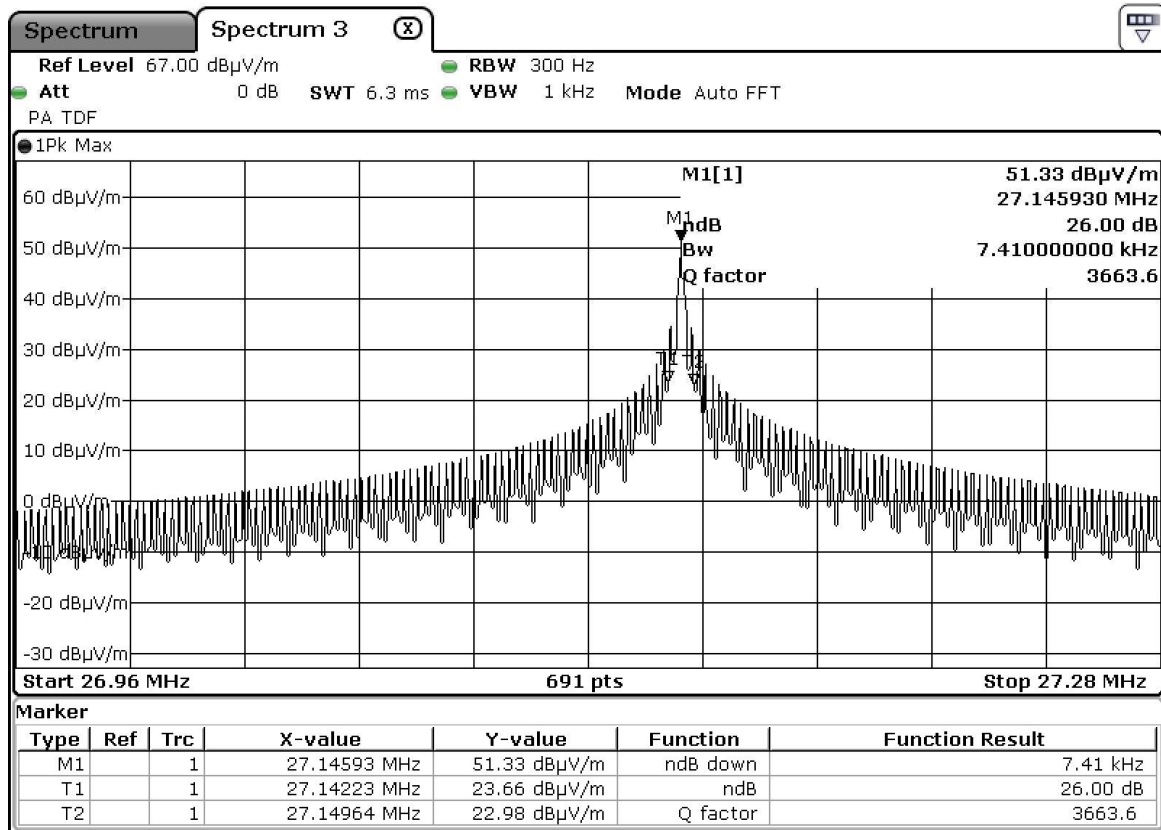
### Limits for 26dB Bandwidth of Fundamental Emission:

Frequency [MHz]	26dB Bandwidth [KHz]	Limits [MHz]
27.14593	7.41	within 26.96-27.28

**TEST REPORT No.: (5219)197-0305**

## Measurement Data

**Test Result of 26dB Bandwidth of Fundamental Emission: PASS**





## TEST REPORT No.: (5219)197-0305

### Duty Cycle Correction During 100msec:

Each function key sends a different series of characters, but each packet period (100msec) never exceeds a series of 22 long (1.594msec) and 60 short (0.5797msec) pulses. Assuming any combination of short and long pulses maybe obtained due to encoding the worst case transmit duty cycle would be considered  $(22 \times 1.594\text{msec}) + (60 \times 0.5797\text{msec})$  per 100msec = 69.85% duty cycle. Figure A through B shows the characteristics of the pulse train for one of these functions.

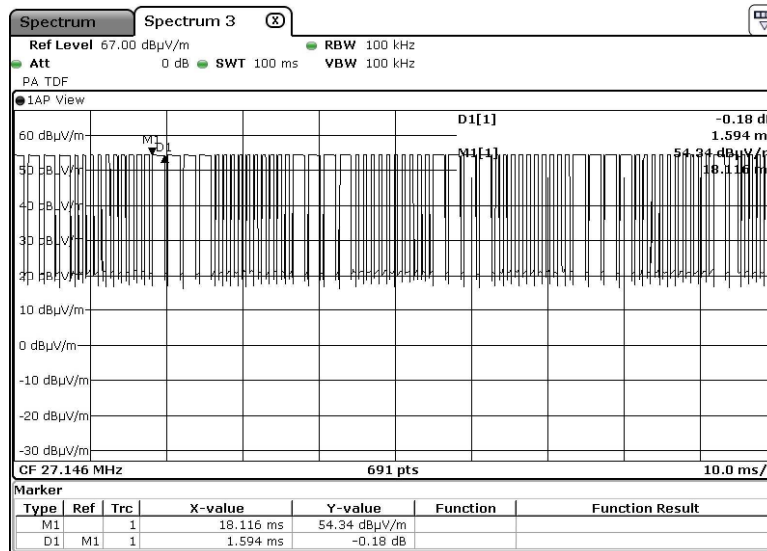
Remarks:

Duty Cycle Correction =  $20\text{Log}(0.6985) = -3.1\text{dB}$

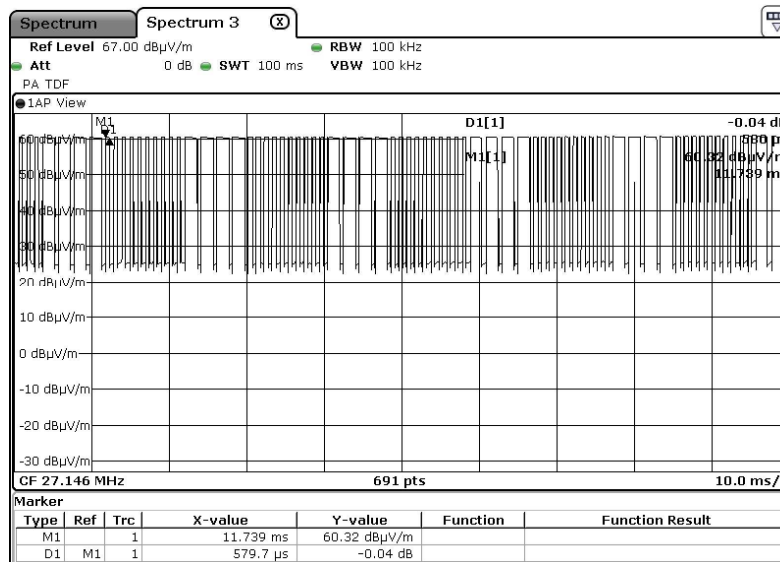
The following figures (Figure A to Figure B) show the characteristics of the pulse train for one of these functions.

**TEST REPORT No.: (5219)197-0305**

**Figure A [Long Pulse]**



**Figure B [Short Pulse]**



## TEST REPORT No.: (5219)197-0305

### Photographs of EUT

**Front View of the product**



**Rear View of the product**



**Top View of the product**



**Bottom View of the product**



**Side View of the product**



**Side View of the product**



**Battery compartment**



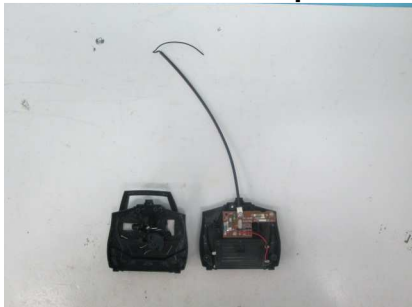
**Battery Cover**



## TEST REPORT No.: (5219)197-0305

### Photographs of EUT

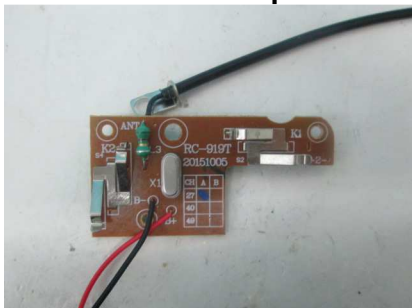
**Internal View of the product**



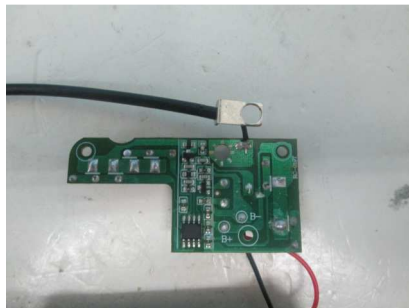
**Internal View of the product**



**Inner Circuit Top View**



**Inner Circuit Bottom View**



**Antenna**



TEST REPORT No.: (5219)197-0305

## Measurement of Radiated Emission Test Set Up



\*\*\*\*\* End of Report \*\*\*\*\*