

User Manual

NB-1031

V1.0

Preface

Thank you for purchasing our computer. It is a kind of personal computer with advance design, all round structure and strong function. The design of this PC is suitable for both commercial and personal using. It is the preferred selection for office, housing and traveling. The manual contains all information for setting and using, which states in a very complete and easy-reading way.

Contents

Preventive Measures of Safety.....	3
Chapter 1 Basic Introduction.....	4
1.1 Performance and Characteristics.....	4
1.2 Vertical View.....	5
1.3 Face View.....	5
1.4 Side View.....	6
1.5 Look up View.....	6
1.6 Status Indicator.....	7
1.7 Opening and Closing the Computer.....	7
1.8 The Function of the Keyboard.....	7
1.9 The Using of Touch Pad.....	8
1.10 The Using of inner Web cam.....	8
1.11 The Using of Voice.....	9
1.12 The Using of Battery.....	9
1.13 The Using of Power Transformer.....	10
1.14 The Setting of Device Driver.....	10
1.15 The Temperature of Operating.....	10
Chapter 2 Battery.....	10
2.1 Battery.....	10
2.2 The charging of Battery.....	10
2.3 Questions and Answers.....	10
2.4 The Maintenance of Battery.....	11
2.5 Power Consumption.....	11
2.6 Reducing of Power Consumption.....	11
2.7 Removal of Battery.....	11
2.8 The connecting of System and Power Transformer.....	11
2.9 The checking of Battery Electricity.....	12
Chapter 3 The Setting of BIOS.....	12
3.1 The Set up Progress of BIOS.....	12
3.2 The Function of Main.....	13
3.3 The Menu of Advanced.....	14
3.4 The Function of Safety.....	14
3.5 The Menu of Boot.....	15
3.6 The Menu of Exit.....	16
Chapter 4 Smart Manager.....	16
Chapter 5 Questions and Answers.....	17
Appendix I Specification.....	19

Appendix II Warranty Items.....19

Preventive Measures of Safety

Preventive Measures of Safety

This chapter is designed for the potential risks when you use the PC. All necessary functions have been installed in the computer so as to protect your safety. However, you should still judge the potential risk from your own judgment.

1. Please read the following instructions
2. Reserve these instructions for reference
3. Pull the plug before cleansing. Do not use liquid and gas cleaning fluid for wiping, use the wet cloth.
4. The outlet hole should be installed near the device or the place where easy to operate.
5. Do not put the PC near water
6. Put the PC in a very stable place when you install it, it may be damaged seriously if you put on a unstable place
7. Using the label to supply electricity
8. Do not put the power cord around people in case damaging it by stepping. And do not put anything on the power cord
9. Following all warning and instructions on the product
10. Disconnect the power supply if you don't to use the computer for a long time so as to protect it from damaging by temporary over voltage
11. Do not spill any liquid on it, otherwise, it would be cause fire or electric click
12. Do not disassemble the computer by yourself, find someone professional to do it for safety
13. Following situations must be resolved by qualified person,
 - a. When the power cord or plug is damaged
 - b. Get wet by rain or water
 - c. It still cannot be used when you follow the instruction correctly
 - d. It has been fallen or shell has been damaged
 - e. The product has obvious damage
14. Do not put the PC in the environment that the temperature is over 60° C (140° f)
15. It could work normally under the temperature 35° C
16. According to IEC 704-1: 1982, the sound pressure of user's place should be 70 dB(A) or lower than 70 dB(A)
17. Requirements of power cord

The power cordsets used with adapter should coincide with requirements of the country you stay, no matter 100-200V or 200-240V. The following information has been stated the requirements for power cord

The power cordsets should be qualified by local country

It should have a configure to match with CEE22/EN6032/IEC 320 so as to connect the power

Cord

18. You should follow the following safety measures in case causing fire, electric click or damage other peoples,

Do not use it near water, such as bathtub, washing trough, wet basement or swimming pool

Do not use the headphone when in storm, you may be clicked for lightning

Do not call near the raphe of gas

Do use the power cord that this manual required

Do not use the adapter near water or other liquid thing, do not spill any liquid on the adapter

Laser warning: Laser Warning Level I. Product warning---there are unseen Laser radiation when you open it, do not Exposed in it.

Note: Do not let the notebook touch your body when you use it a long time, because it will cumulate all heat at the bottom of notebook. It will make your skin uncomfortable or burned if you have touched your skin all the time.

Chapter 1 Basic introduction

1.1 Performance and Characteristics

Intel Atom mobile computer technology

Intel Atom Processor N270 (1.6GHz)

Intel Chipset 945GSE

RAM: 1GB DDR2/2GB DDR2

Storage: 160GB SATA 5400/500GB SATA 7200

10.1" backlight LED screen

1. 3M pixels Web cam, Digital Microphone

Inner interface: 2.0 USBx3, VGAX1, MICx1, headphone jackx1, RJ-45x1, outer interface x 1

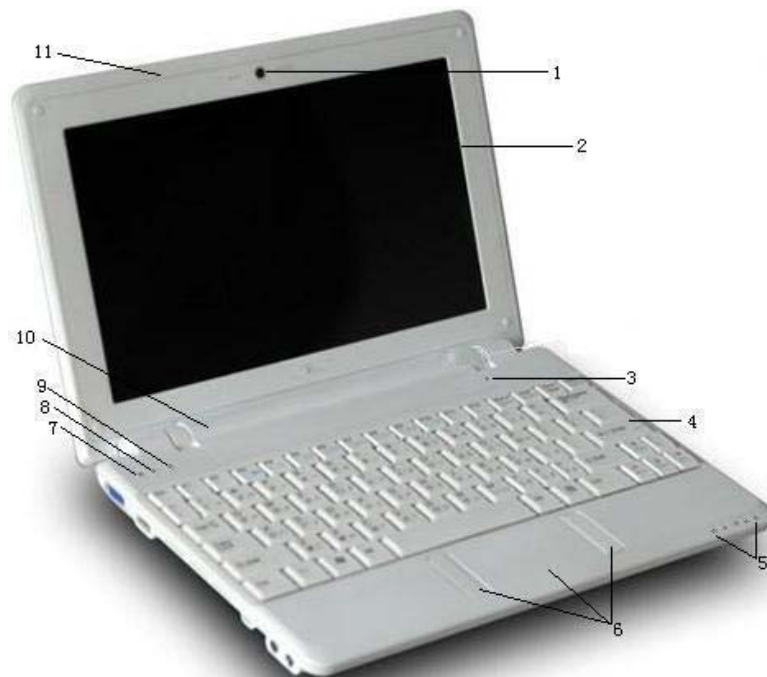
Microsoft Windows XP/Microsoft Windows VISTA

4 cell Li-Ion battery, using time is 2.5-4H(the using time is different under the different usage)

weight: 0.9kg

without battery)

1.2 Vertical View



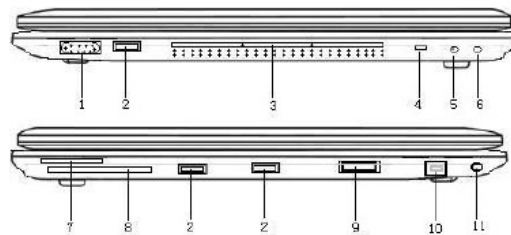
Number	Item	Function
1	Webcam	1.3M pixels
2	LCD	Display output
3	Digital microphone	Build the inner digital microphone
4	Keyboard	input characters and digits
5	3-system indicator	From left to right: Storage- Cell signaling -power boot
6	Touch Pad	For removing cursor, selecting and starting computer session
7	Digital mode lights	Start inner keyboard when lighting
8	Keyboard converted light	Start capital lock key when lighting
9	Battery package	Settled in battery room so as to provide electric power when disconnect the outer power supply
10	Upper-cover	Protect the notebook

1.3.Face View.



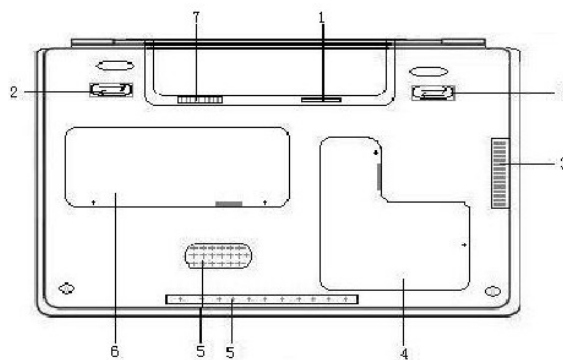
Number	Item	Function
1	stereo speakers	Output the voice

1.4.Side View ((left-right)



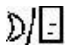


Number	Item	Function
1	D-SUB	Connect VGA screen
2	USB interface	Connect the USB device
3	Hole for heat	Using for heat-dissipating of notebook
4	Kensington	Connect the safe cable compatible with Kensington
5	Headphone plug	Connect the headphone as a trumpet for outputting the
6	MIC plug	Connect the MIC and input audio signal
7	5-in-1 card reader	A read machine for media card
8	Express Card Slot	Connect the Express Card
9	Power button	start and close the computer, or keep working when i sleep-mode
10	RJ45 LAN jack	Connect the LAN
11	DC-IN Plug	Connect the power transformer to provide electricity for computer

1.5.Bottom View



Number	Item	Function
1	Card connector for	Read the information of in SIM
2	Battery lock	Locking or opening the battery
3	Heat dissipating	Dissipate the heat air from here, Do not block this hole
4	Memory card	The memory storage in the bottom cover,
5	Ventilation hole	Input the out cool air, Do not block this hole
6	Disk device bottom	There are SATA disk in this cover, you can install and update
7	Battery plug set	Install in the battery room so as to provide power when

1.6. Status indicator lamp

Picture	Item	
	Status of power	The blue light is closed the system is closed or is in sleep-mode The blue light is glimmered the system is on standby The blue light is open the system is on work
	Battery status	The blue light is closed The charging is over or the power of computer working is not from power transformer
	Disk	The working computer is reading from disk or save in it

1.7. Opening and closing the computer

1) Power

Open the upper cover and hold the power button for 1 or 2 seconds. After opening the power, the blue light will work on.

2) Close the power

If you don't use the computer, you'd better close the power. Before close the power, first please close all the application, then close the OS.

Close the computer, do not close the LCD screen immediately if you have been used it for a long time. Close the screen will make heat gather on it, and then will break the screen. Please also do not close the screen for a long time if you have started the computer or in power saving mode


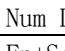
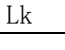
3) Transient stopping mode

You can settle the default value in dialog **【power selection/advance】**. Dialog [Power selection] has several operating functions for computer saving mode.

1.8. Keyboard Function

The notebook uses the standard typewriter keyboard with many other functions



Picture	Description
	Input the capital characters after you press button Caps Lock
	If you want to start the number lock, Please press button Num Lk
	Press this button, you could revote pictures when you use some processes
	Press this button, you could start Windows. [Start] menu.
	Press this button, could use as the right click mouse.

Fn shortcut key combination (shortcut)

Use key Fn with other keys can start, close or settle some special functions. Such combination keys also called as shortcut key. If need to use these shortcut keys, please press Fn and the following keys:

Picture	Description
	Asleep Press this key combination could let the system in sleep mode In this mode, backlight of LCD screen will close, and many other inner processes will in low electricity consumption status
	LAN Start the LAN
	Turn down the brightness Press this combination key could turn down the brightness
	Turn up the brightness Press this combination key could turn up the brightness of LCD
	Change LCD/output video Press this combination key could: just for LCD mode, output video mode, LCD and output video mode; Attention: This function is just valid in part systems, please according to the instruction of OS
	Start/Stop touch pad Press this combination key could start and stop the function of touch pad
	Silent Press this key combination could start or close the output of video
	Turn down the voice Press this key combination could turn down the voice Attention: This function is just valid in part systems, please according to the instruction of OS
	Turn up the voice Press this key combination could turn up the voice Attention: This function is just valid in part systems, please according to the instruction of OS

1.9.Usage of touch pad

The touch pad in computer is PS/2 selective installation; it could feel the movement on touch pad, if you move your hand on touch pad, The cursor will response. The central arm-holder could improve the conformability and hold the arms.

Usage of touch pad as follows:

- 1) Move the hands on touch pad could move the cursor.
- 2) Press the left and right buttons in the side of touch pad could use functions of selection and execution, just like the left and right buttons on mouse.
- 3) Click the touch pad lightly could also make the same effect.



1.10.Usage of the inner webcam

Usage of inner webcam, it depends on the setting of your purchased notebook, the usage of this function is quite different. If your computer has webcam, video edit software will increase video function. Attention: 1.For the information about webcam, please refer to the public ware soft description document.

2. Webcam could not be shared in several software applications. If the other application is using the webcam, please exit the application, and then use the webcam.

1.11. Usage of voice

You can control the voice in Windows:

Click icon  once in taskbar, and control the volume by button. You can also double click icon  to start (volume control) to change the volume. Attention: you could use Fn combination keys to change the volume. Please refer to 【 Fn combination keys 】. Please turn down the volume before you connect the headphone or MIC outer video device.

1.12. Usage of battery

1. This notebook is suitable for the following power:

- 1) outer connected power(use power transformer to connect power plug)
- 2) Li-Ion battery Use power transformer as possible as you could, use battery just there is no outer connected power. Li-Ion charging battery will provide power to the computer when there is no outer connected power.

When use the power transformer to connect the notebook and power plug, the inner battery will begin charging. The charging icon of battery on indicator panel will light when it is charging. And the icon will close when finish the charging. The quick charging time for Li-Ion is 2.5H when the computer is power off, the normal charging time is 3.5H

*It will increase the consumption of computer's electricity if you use video or video device

*It will save electric if you turn down the screen brightness.

* If the battery haven't charged completely, please charge it fully before use battery(that is before pull the power transformer). Please check it before you use the battery.

* Li-Ion battery could damage easily, please do not use the power transformer to charge, otherwise it will cause fire or explosion

2. Change of battery The performance of battery will be reduced as using. Please change the battery when you find the capacity of battery is decreased greatly. Please follow the following steps when you changing your battery:

- 1) Close the computer.
- 2) Close the upper cover, turn over the computer.
- 3) Flip the battery-released button. Press the released button till you take out the battery.
- 4) Please make sure if the direction of changing battery is right before you put the battery into the sink

Attention: Please do not charge the battery 100% when the remaining electric amount is higher then 95%.

3. Maintenance of power transformer

Do not use the power transformer in other set-up.

Do not step the power wire or put heavy things on it. Please put the power wiriness carefully, do not put it in place where people must go

Do not pull the power wire itself, please pull the plug when you pull off the power wire.

When uses extension cord, please make sure that the whole capacity of connected set-up doesn't more then that of extension cord.

Please confirm the voltage before connect the power cord and the power plug. Please ask the local supplier and electric company for details if you cannot quite sure the plug specification.

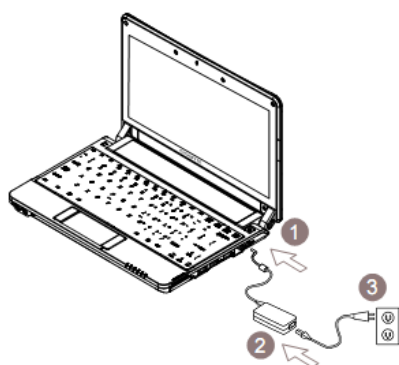
1.13. Connect the power transformer

Power transformer could change the alternating current to direct current, and it also can reduce the voltage of computer. It could adjust the voltage from 100V to 240V, and then output 12V power; you can use the computer no matter where you are.

Warning: Only can use the power transformer and power cord that we suggest. We are do not responsible for any damage caused by wrong power transformer.

You should follow the below steps for correct connection:

1. Connect the power cord to power transformer
2. Connect the power transformer to the direct current port of the computer



3. Insert the power cord of transformer into alternating current plug.

1.14. Install device driver (optional)

If your notebook has been installed OS; you'd better install all necessary device drivers in order to make the hardware work well. Please make sure if the supplier has installed all kinds of driver application in the OS before you install the driver application.

1. You can find the public driver application disc as the below icon shows.

2. Put the disc into CD-RW or DVD-RW (Optional purchase) driver, then will come out a automatic installation picture

1.15. Operating temperature

Operating temperature: From 10oC to 40oC

Chapter 2 Battery

2.1.Battery

Notebook uses Li-Lon battery. Battery life depends on product fittings, model, application, power setting and product function. All the battery capacity will be lower after using.

2.2 Battery Charge:

The Notebook supports online and offline charge, the charge processes will be as follow: Please make sure you have put the battery into the Notebook. Connect transformer, Notebook and electrical jack. When the battery is charging, LED on the top left side will light. Please refer to the corresponding introduction about LED for more details. When the Notebook is power-off, if the battery has no power, it will take three and a half hours to charge the battery.

2.3. Questions and Answers:

Q: Is it normal that I feel the battery heat near the battery?

A: The battery will produce heat, when it is charging or discharging. There is a group of circuit in the Notebook to prevent the battery is overheat. User needn't worry about it.

Q: Why is the operating and using time of the battery not the same?

A: The battery will be fully charged, if its operating temperature is in 15-25oC (59-77oF). If the temperature is higher or lower than this, the battery will have less chance to be fully charged. User can take out transformer for cooling. Then put in the transformer to charge the battery. In this case, the battery can be fully charged.

Q: I haven't used the spare battery for several days. Its power is less than that of other battery fully charged, even though it's fully charged. Why?

A: The battery will discharge automatically if it is not charging. Please charge it before using to make sure it is fully charged. Please make sure the battery is in the Notebook and it is connected with the transformer.

Q: I haven't used the battery for several months and face some problems when charging the battery.

A: The battery discharges automatically for more than three months. Its pressure standard will be low. It may take thirty minutes to charge the battery, in order to improve its pressure standard. It usually takes about two to three hours to fast charge the battery.

2.4.Battery Maintenance:

Please use up all the battery power before charging to keep the maximum battery power. Take off the transformer, and use up the battery power. In order to speed up the used time, please use hardware. When the battery power is used up, cool the Notebook, especially the battery. When the temperature is between 15-25° C, connect the transformer for charging

2.5. Power Consumption

Windows OS has adopted the most advance ACPI Power Manager. Please pay attention to the following introduction, in order to use up the power totally.

In Windows OS, you can control battery option in controlling panel.

2.6. Lessen power consumption

*You may have many ways to save power, even though the Notebook with OS has power-saving function

*Use transformer as many as possible

*Use hardware to read-in and write-in. Use USB device as little as possible.

*Close the unused device, such as webcam and so on

* Reduce LCD panel lightness through Windows. Note: Make sure the battery is in the Notebook, whenever the system is power on or off.

2.7. Take out the Battery

It's easy to take out or exchange the battery. Please make sure the Notebook is turned off normally before taking out the battery. If you want to take out the battery when the Notebook is power on, please make sure battery is not the only input way for power.

Please take out the battery as the following steps. See Picture 1

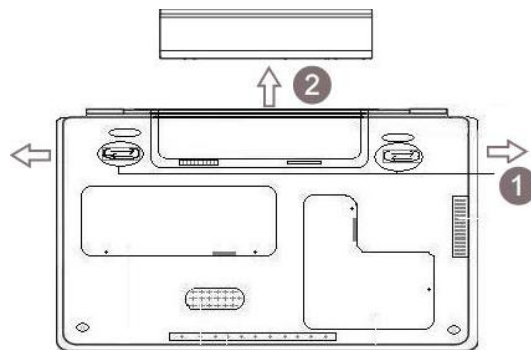
Make sure the system is power off normally.

Make the Notebook face down. See Picture1,

Turn Battery lock to unlock position, see Picture1 ①.

Take out the battery. See Picture1 ②.

If you need to put in the battery, do as the above steps in the opposite direction.



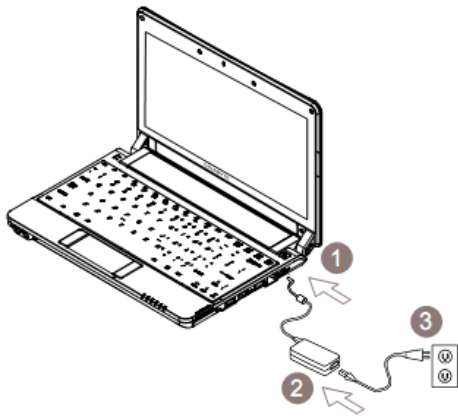
Picture1

2.8. Connecting system and transformer

Connect system and transformer, see Picture 2 ①.

Connect AC and transformer, see Picture 2 ②.

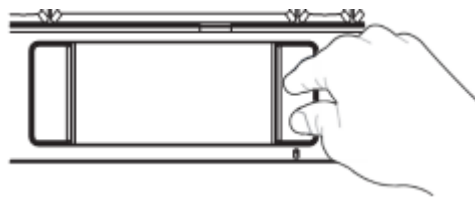
Connect AC to power jack, see Picture 2 ③



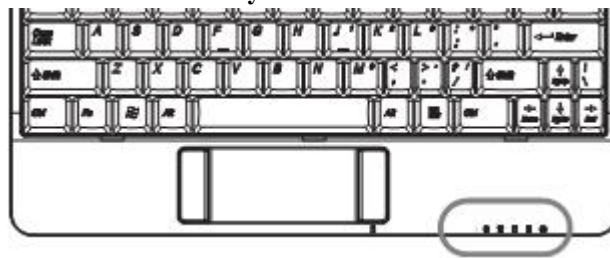
Picture2

2.9. Checking battery capacity

You can press the right button near touch pad to check battery capacity when the system is in Stand-to, Sleep and Power Off model.



LED Indicator shows battery status



Chapter 3 BIOS Setting

BIOS setting program is built in BIOS hardware setting program (Basic input& output system). Your notebook already has this setting and can't execute the program again. But you have to execute it, if you have setting problems.

3.1. BIOS Setting Program

There is basic setting data in the Notebook through BIOS setting program. The system will initialize hardware when the Notebook is turned on. BIOS setting program can change the safety of the system and power manager program.

1) BIOS setting menu

There is basic setting data in the Notebook through BIOS setting program. The system will initialize hardware when the Notebook is turned on. BIOS setting program can change the safety of the system and power manager program.

2) Start BIOS Setting Program

You can enter BIOS setting program before Windows interface appears when you turn on the computer. If your Notebook is already turned on, please turn off it, and then restart is , Press F2 Key to enter the program.

3) Browse and input information

Move the following keys in the field and input information.

Item	Function
F1	Help
ESC	Exit
	Select Item
	Select Menu
F7/F8	Change Values
Enter	Select-Sub menu
F9	Setup default
F10	Save and Leave

User can input new values to replace the presetting, but the left values can't be changed for Windows default. In the main menu, press <Enter> to the sub menu. Press <Esc> back to the former setting page.

Note: 1. More details about Menu and key are as following. In additions, BIOS settings are different, for BIOS versions varies in different batches Notebooks.

2. Please don't change your BIOS settings without necessary, for your Notebook already has the initialized and Best BIOS settings.

3. The chart showing below may be different from that of your Notebook, for the BIOS versions may be different.

3.2. Main Function List

InsydeH20 Setup Utility				REV. 3.5
Main	Advanced	Security	Boot	Exit
System BIOS Version: M1028 r1.1 e1.1				Item Specific Help
Processor Type: Intel® Atom™ CPU N270 @ 1.60GHz				F7: Reduce Number; F8: Increase Number; No action for Number Keys.
System Bus Speed: 533MHz				
System Memory Speed: 533MHz				
Cache RAM: 0512 KB				
Total Memory: 1024 MB				
System Time: [19:26:25]				
System Date: [03/12/2009]				
F1 Help	↑ ↓ Select Item	F7/F8 Change Values	F9 Setup Default	
ESC Exit	← → Select Menu	Enter Select ► Sub-Menu	F10 Save and Exit	

System Time

You can set system time in Hour/Minute/Second model. Input Hour/Minute/Second number in the field. Press <F7> or <F8> to select field. You can also set system time in OS.

Sytem Date

You can set system date in Month/date/year model. Input Month/date/year number in the field. Press <F7> or <F8> to select field. You can also set system date in OS.

3.3. Advanced Menu

InsydeH20 Setup Utility		Rev. 3.5
Main	Advanced	Security Boot Exit
► Boot Configuration ► IDE Configuration Advanced S3: [Enable] Keyboard language [US, Chinese]		Item Specific Help Configures Boot Settings.
F1 Help ↑ ↓ Select Item F7/F8 Change Values F9 Setup Default ESC Exit ← → Select Menu Enter Select ► Sub-Menu F10 Save and Exit		

Boot Configuration

Set (NumLock) status

DE Configuration IDE

Select IDE or SATA model

Advanced S3

S3 [Open]/[Close]

Keyboard Language

[Close]/[Germany]/[Korean]/[Japanese]/[User Interface]/[US, Chinese]

3.4. Safety Function List

InsydeH20 Setup Utility		Rev. 3.5
Main	Advanced	Security Boot Exit
Supervisor Password : Not Installed User Password : Not Installed Set Supervisor Password Set User Password		Item Specific Help Install or Change the password and the length of password must be greater than one word.
F1 Help ↑ ↓ Select Item F7/F8 Change Values F9 Setup Default ESC Exit ← → Select Menu Enter Select ► Sub-Menu F10 Save and Exit		



Set Supervisor Password

Only if you have set supervisor password, can you set user password. Choose Change Supervisor Password, then Press Enter. It will remind you to input new passwords, which are more than 6 characters twice. If you have input two different passwords, press Esc to reset the passwords.

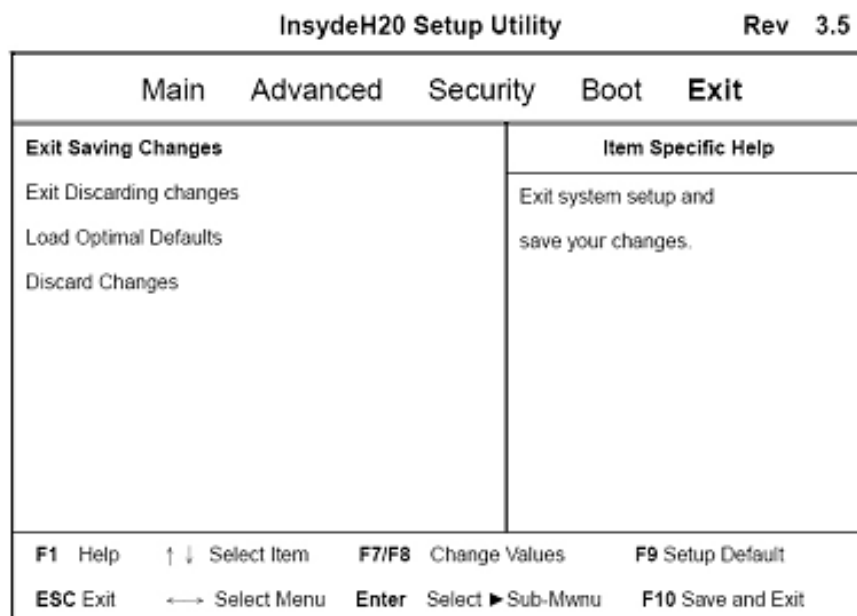
3.5.Boot Menu

InsydeH20 Setup Utility		Rev. 3.5		
Main	Advanced	Security	Boot	Exit
Quiet Boot [Enable] ► Boot Type Order			Item Specific Help	
			Disables or enables booting in Text Mode.	
F1 Help ↑ ↓ Select Item F7/F8 Change Values F9 Setup Default				
ESC Exit ← → Select Menu Enter Select► Sub-Mwnu F10 Save and Exit				

Boot Type

You can use   to select Boot Type, then press <F7> or <F8> to select the settings on the list. If you want to stop the Menu, please press <Esc>.

3.6.Exit Menu



Exit Saving Changes

Exit Discarding Changes

Load Optimal Defaults

Discard Changes

Chapter 4 Smart Manager

When enter the system, choose Start-Program- Smart Manager. More details about Smart Manager are as below.



High-Bright Model

Click this chart, the screen will be 「100%」 bright.



Normal Model

Click this chart, the screen will be 「60%」 bright.



Meeting Model

Click this chart, the screen will be 「44%」 bright.



Power Saving Model

Click this chart, the screen will be 「20%」 bright.



Brightness

Move the Mouse can adjust the bright of screen temporarily. If you need to adjust the bright based on power plan, click the chart once to open the controlling panel for power option.



Volume

Move the mouse to adjust the volume of the loudspeaker or select Mute Check Box



Display Resolution

Click this chart can change the display resolution.



Rotate

It supports two rotate ways.

- 1.Normal Model: 0 degree
- 2.Vertical Model: 90 degree. Press the chart to rotate the display.



Screen Keyboard

Click the chart to show screen display.



Emendation

Click the chart to start eGalax Touch Device emendation public process



Power

4 Models for option : Suspend ;Hibernate;Reboot;Shutdown



Battery Status

AC-IN / battery life time

It will display 「AC-IN」 when using power transformer. If not, it will display battery life time or battery using time.



Player

Clicking the chart can play music. (Note: The system should have this player.)



Menu

Click the chart to open the menu.



Webcam

Click the chart to start webcam function. (Note: The system should have installed this software.)



Network

Click the chart to start network. (Note: The system should have been able to connect website.)

Chapter 5 Questions& Answers

This part provides advises and answers to the questions, which may be raised while using the Notebook. This part is for your reference.

5.1 Q: The Notebook turns to Sleeping Model too fast, so that I have to press the key or move the Mouse to return the normal screen all the time. What should I do?

A: This belongs to Windows Power control. Click Begin, Control, Power Option, Closing Monitor. Here you can adjust the time you need.

Q: I heard that the startup speed of process could be faster, if I clear or clean the files in Hardware disc. What should I do?

A: Yes. Clear the needless files and clean fragments. Therefore, the files become a group. Windows will provide these public processes. Performing Clear Disc will clear needless files, while Cleaning Fragment for regrouping the files. If you need more details about the public processes, please refer to Windows Introduction files.

Q: What kind of Microphone should I use for this Notebook?

A: You should use the Mic, which can adjust the volume automatically³

Q: The louder speaker has aftersound, what should I do?

A: Click Loudspeaker twice on the taskbar. Choose Mute Model on Mic Balance.

Q: I can't power off the computer through Windows Operation System, for there is something wrong with the software. Then I try to turn off the power by pressing the Power Button, but it is useless. How should I turn off the power forcedly?

A: Please make sure you keep pressing the Power Button for at least seconds. Generally, this will turn off the power forcedly.

Q: Why I can't use the Notebook for battery charge, when I don't use the Notebook for sometime?

A: The battery will become lowliness model while not using the Notebook for a long time, for example, more than a month. In this case, you should charge the battery for several hours first. When the battery is full, your computer will operate normally.

Q: When the computer displays CMOS Battery Low, what should I do?

A: If your computer hasn't connected the power, that means taking the power pin from the jack while taking out the battery for more than 45 days, the information in CMOS will lose.

Please reset CMOS by the following steps:

1. Press F2 to BIOS Setting Process.
2. Choose <Load Windows Default>, click <OK>, and then <Enter>.
3. Choose <Save and Leave>, click <OK>, and then <Enter>.

Q: How to delete the settings?

A: 1. Click Delete Chart in Taskbar Notice twice. There will be Setting list, all the settings support delete function and can be deleted.

2. If you can't see Delete Chart, that means your settings don't support delete function, therefore, you can't delete these settings.

3. On < Safe Delete Hardware> list, choose the setting needed deleted, then click <Stop > once. This will remind the system the settings you need to delete.

4. Click < Yes> on < Stop Hardware Setting>, there will be notice, which will remind you could delete the setting safely. Notice: If you haven't use Safe Delete Warning System advanced, you may lose the data or the system will be unstable by delete the setting.

5. The removable storage setting, which can be safe deleted will keep all the data, for the system default will stop read-in. The system function will be slow then it stops read-in, therefore, make sure to the read-in when the setting has been deleted.

Q: What's SDHC card's capacity the Notebook supports?

A: SDHC's specification is depending on SD association standard. Now the maximum capacity released by SD association is 32GB

Q: Can the Notebook change the 2.5" SATA SSD interface, therefore it can be used in Windows XP system?

A: Right now, the Notebook version doesn't support SATA SSD. If there is any updated version, we will issue its specification on the website.

Attached I Specification

CPU: Intel Atom 1.6GHz N270 (Intel Atom 1.6 GHz N280 Option)

OS : Microsoft Windows XP/ Microsoft Windows VISTA

Chipset : Intel 945GSE

RAM: DDRII-667 SO-DIMM x 1, Maximum 2GB

Display: interface VGA

play resolution: 10.1"LCDpanel/WSVGA 1024 x 600

HDD: 2.5' SATA HDD 160/250/320GB

Inputting device: 83key K/B, touchpad

I/O interface: USB x 3, Mic jack/earphone jack/VGA RJ45/five-in-one SD card slot/Express Card

Sound: loudspeaker x 2

Webcam: 1.3M pixels

thevery-defending

computer lock

Battery : 4 cell Li-Ion battery pack 4400 mAh(standard fittings)

dimension& weight : 265 x 195 x 26.5~31 mm

Weight 0.9kg(not including battery)

Attached II Warranty Items

1.All the discounted or new products bought from our company can be warranted. If the products are out of warranty, please contact our Repairing Center and pay for the repairing.

2.The warranty period begins from the date in the purchasing invoice. Consumers should keep the invoice to guarantee the legal rights.

3. Please visit our related websites for different products' warranty period. Dealers should be responsible for the warranty service.

4.The beginning of warranty period for products sold by industry cooperation partners is based on Item 2.

5.Software products pre-installed, operation system, consuming materials and other fittings, such as gift, back bag, CD, Mouse, package materials is out of warranty.

6. If there is no purchasing invoice, the warranty period is determined by the serial number on the label or product.

7. If there is no company volume label, or no product serial number, or the serial number is illegal or not fit with the products, the warranty or after service will not be prolonged.

8. If the product has any defects or broken-down on the purchasing date (not including the condition on Item12), consumer can request the original dealer to provide the original package and selling proving to exchange new products and all the fittings. If not, repair the defects or broken-downs.

9. Consumer can't exchange new products, if the product defects are caused by neglect.

10. All the products needed repairing should have the original package materials or suitable package materials, such as paper box, gasbag or foam. If the broken-down is caused by wrong package while shipping, it's out of warranty service.

11.If we can't repair the products which are still in the warranty period, we'll replace similar new product or equate product.

12. If the product is broken by the following reasons; it will be out of warranty.

- 1)) natural disaster, accidents or neglect
- 2)) Act against the Manual
- 3)) Wrong assembly or installing.
- 4)) Using the fittings not authorized.
- 5)) Using the product in the wrong environment
- 6)) Open the product not authorized.
- 7)) Using the product abnormally
- 8)) circuitry or parts being oxidized
- 9)) Using the product for RAM, VGA or USB testing
- 10)) defects caused by computer virus

11.) Important reminding: Please prepare the important data before sending the product for repairing. Our company is only responsible for repairing and testing the product. We won't keep any data from the computer or we won't be responsible for any missing data.

12) If the product is out of warranty period, but it needs testing or adjusting without any parts replacement, please pay for the service charge.

FCC WARNING

This device complies with Part 15 of the FCC Rules. Operation is subject to the following two conditions:

- (1) this device may not cause harmful interference, and
- (2) this device must accept any interference received, including interference that may cause undesired operation.

NOTE: This equipment has been tested and found to comply with the limits for a Class B digital device, pursuant to part 15 of the FCC Rules. These limits are designed to provide reasonable protection against harmful interference in a residential installation. This equipment generates, uses and can radiate radio frequency energy and, if not installed and used in accordance with the instructions, may cause harmful interference to radio communications. However, there is no guarantee that interference will not occur in a particular installation. If this equipment does cause harmful interference to radio or television reception, which can be determined by turning the equipment off and on, the user is encouraged to try to correct the interference by one or more of the following measures:

- Reorient or relocate the receiving antenna.
- Increase the separation between the equipment and receiver.
- Connect the equipment into an outlet on a circuit different from that to which the receiver is connected.
- Consult the dealer or an experienced radio/TV technician for help.

NOTE: The manufacturer is not responsible for and radio or TV interference caused by unauthorized modifications to this equipment. Such modifications could void the user's authority to operate the equipment.