

ANNEX H: The EUT Appearances and Test Configuration



Picture 6: Constituents of EUT



Picture 7: Left Hand Touch Cheek Position



Picture 8: Left Hand Tilt 15 Degree Position



Picture 9: Right Hand Touch Cheek Position

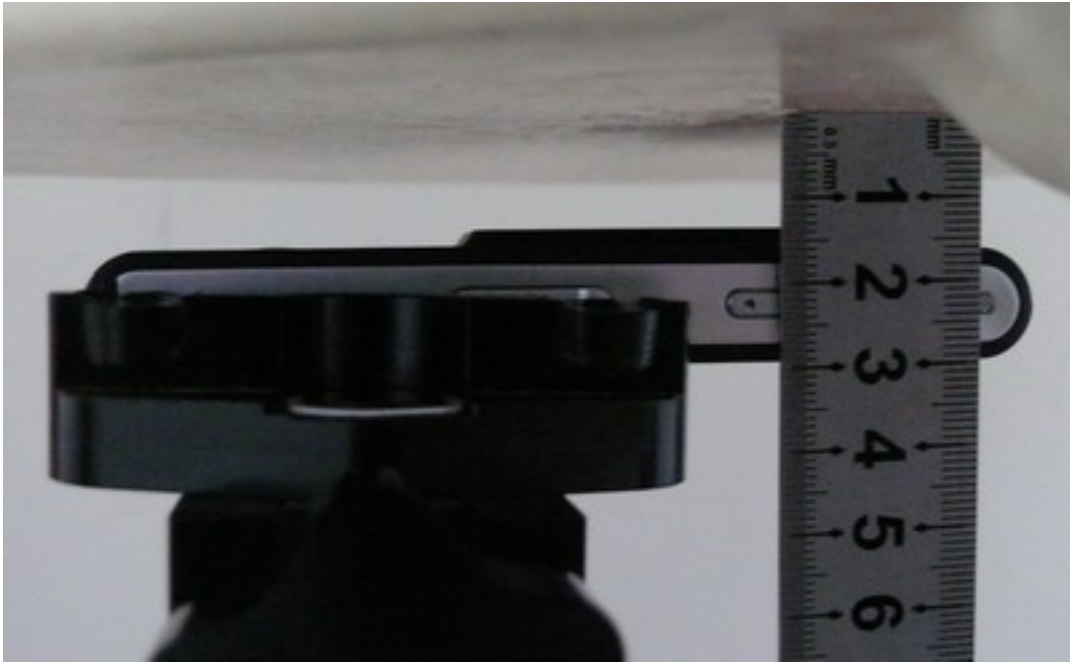


Picture 10: Right Hand Tilt 15 Degree Position

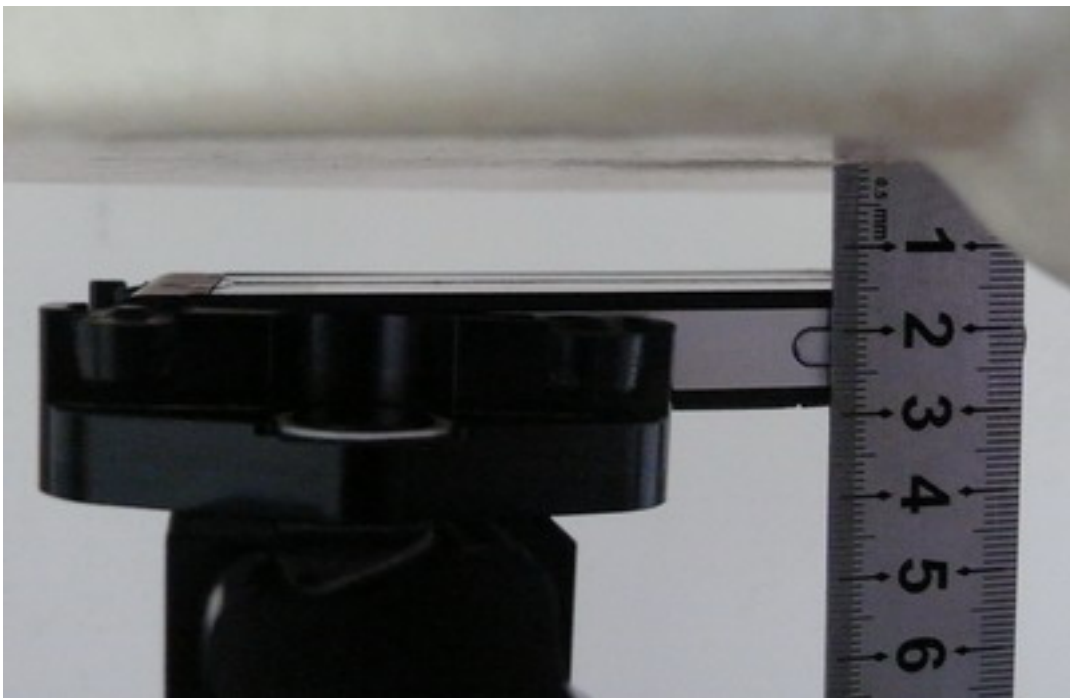
TA Technology (Shanghai) Co., Ltd.
Test Report

Report No.: RZA2009-1087FCC

Page 136 of 137



Picture 11: Body, The EUT display towards ground, the distance from handset to the bottom of the Phantom is 15mm



Picture 12: Body, The EUT display towards phantom, the distance from handset to the bottom of the Phantom is 15mm



Picture 13: Body with earphone, The EUT display towards ground, the distance from handset to the bottom of the Phantom is 15mm)