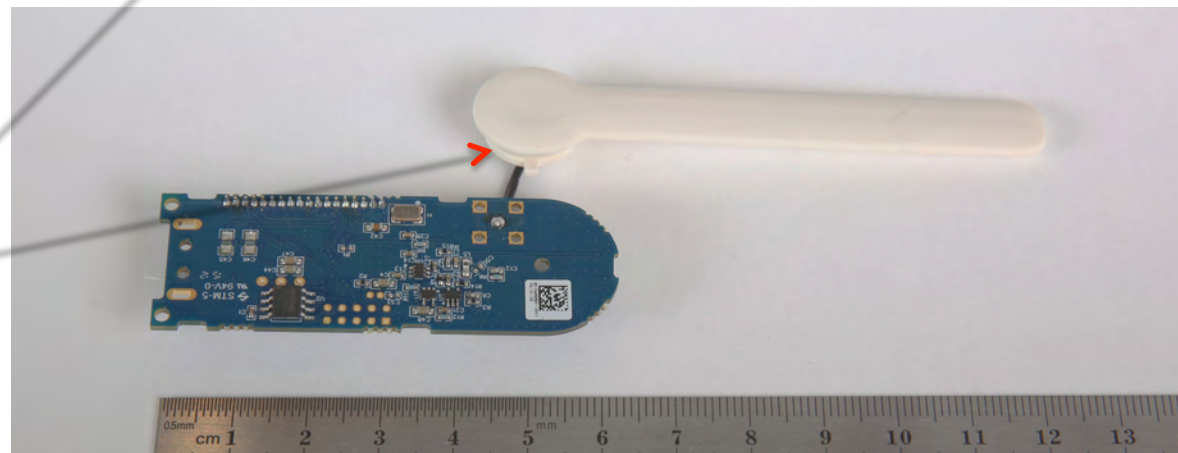
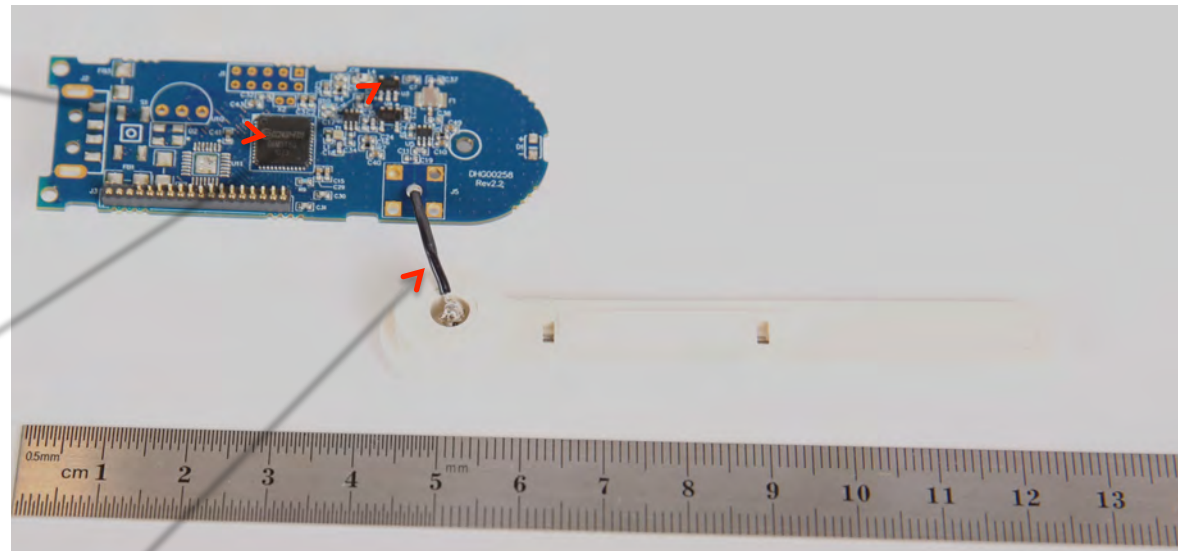


Router Radio

U1, Texas
Instruments
CC2430
System-on-a-
Chip contains
Radio

U3, RF Micro
Devices RF2373
Tx Amplifier

Antenna
structure:
in-molded
captured
antenna/
wire, and
wire with
soldered
connector

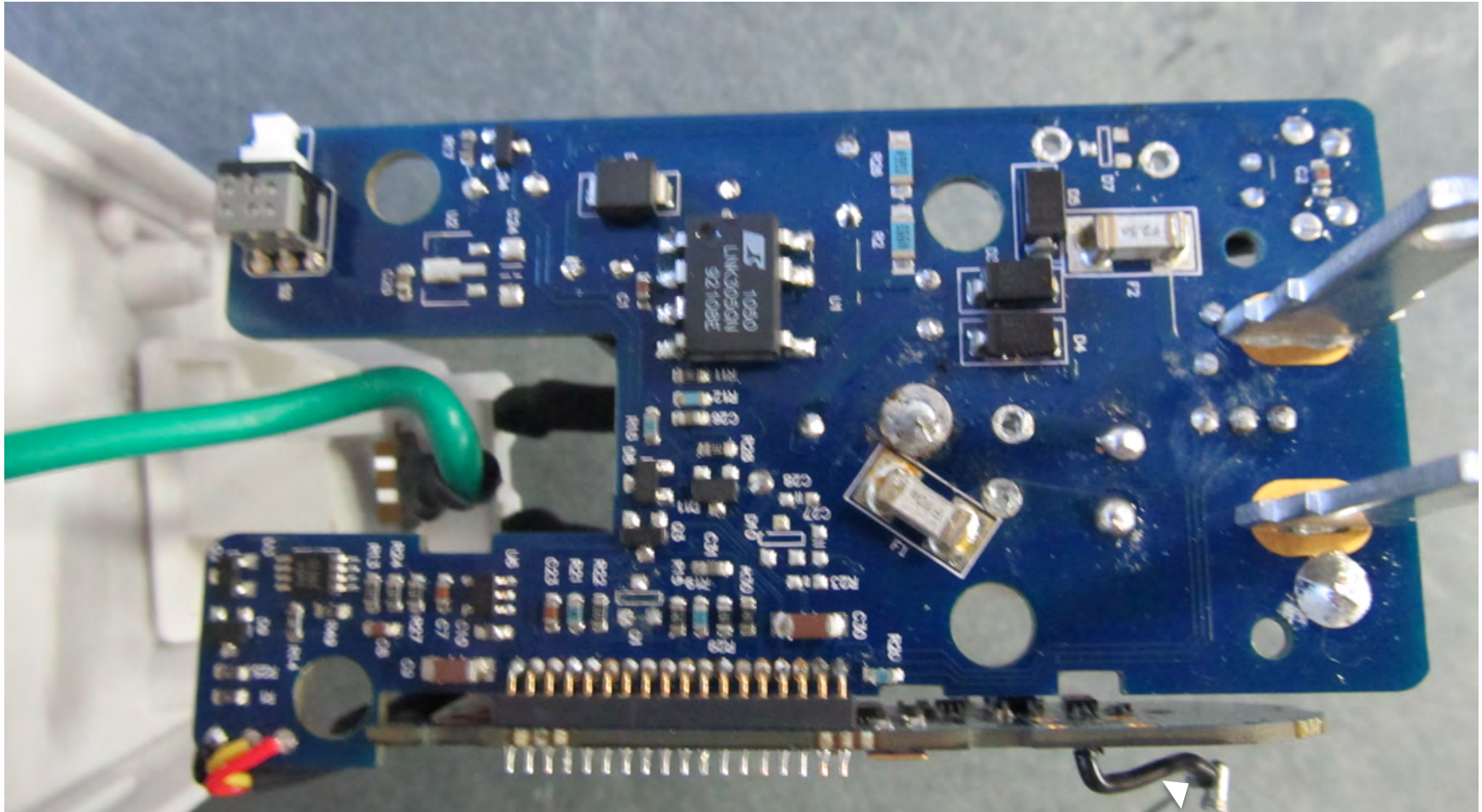


Radio Board as Installed in Router

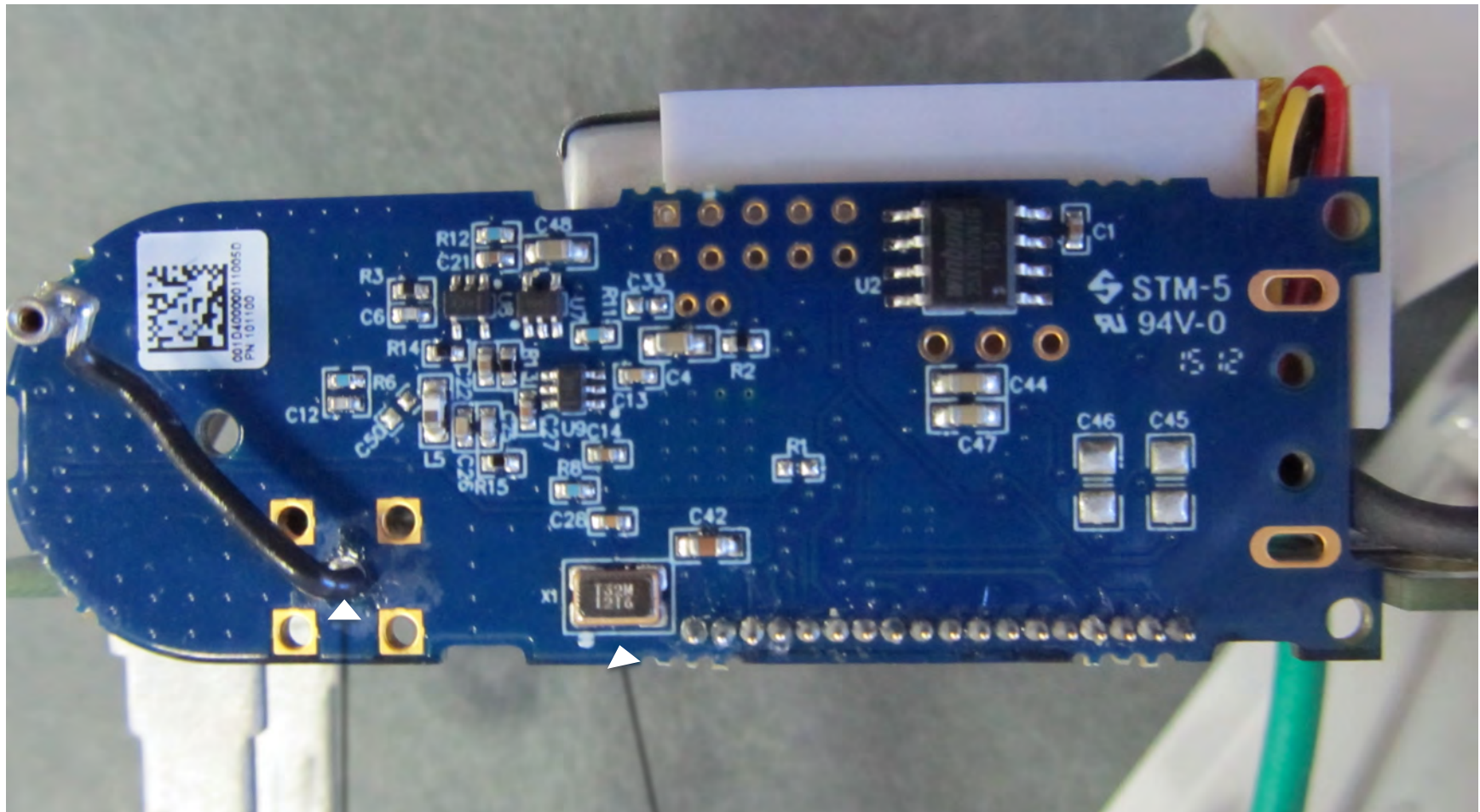
Antenna
structure:
in-molded
captured
antenna/
wire, and
wire with
soldered
connector

Radio Board
at right
angle to
main board





Antenna Connector



Antenna Wire

32MHz Crystal