

**FCC PART 15 SUBPART C TEST REPORT**

**for**

**FALL SENSOR**

**Model No.: IC2400FS**

**FCC ID: XO82400FS**

**of**

Applicant: Instant Care, Inc.

Address: 2310 Cousteau Ct Vista, CA 92081

Tested and Prepared

by

**Worldwide Testing Services (Taiwan) Co., Ltd.**

**FCC Registration No.: 930600**

**Industry Canada filed test laboratory Reg. No. IC 5679A-1**

**A2LA Accredited No.: 2732.01**



**Report No.: W6M21409-14466-C-1**

6F, NO. 58, LANE 188, RUEY-KUANG RD., NEIHU TAIPEI 114, TAIWAN, R.O.C.  
TEL: 886-2-66068877 FAX: 886-2-66068879 E-mail: [wtls@wtls-lab.com](mailto:wtls@wtls-lab.com)



## **TABLE OF CONTENTS**

1	GENERAL INFORMATION .....	2
1.1	NOTES.....	2
1.2	TESTING LABORATORY .....	3
1.2.1	Location .....	3
1.2.2	Details of accreditation status .....	3
1.3	DETAILS OF APPROVAL HOLDER.....	3
1.4	APPLICATION DETAILS .....	4
1.5	TEST ITEM.....	4
1.6	TEST STANDARDS.....	4
2	TECHNICAL TEST.....	5
2.1	SUMMARY OF TEST RESULTS .....	5
2.2	TEST ENVIRONMENT .....	5
2.3	TEST EQUIPMENT UTILIZED .....	6
2.4	GENERAL TEST PROCEDURE .....	8
3	TEST RESULTS (ENCLOSURE).....	9
3.1	TRANSMISSION REQUIREMENTS.....	10
3.1.1	Limit of Transmission Time .....	10
3.1.2	Active Time .....	10
3.2	OUTPUT POWER (FIELD STRENGTH) .....	11
3.3	OUT OF BAND RADIATED EMISSIONS.....	12
3.4	TRANSMITTER RADIATED EMISSIONS IN RESTRICTED BANDS .....	13
3.5	SPURIOUS EMISSION RADIATED, TRANSMITTER .....	14
3.6	CHANNEL BANDWIDTH.....	16
3.7	ANTENNA REQUIREMENT .....	17
3.8	DUTY CYCLE .....	18
3.9	CONDUCTED MEASUREMENT AT (AC) POWER LINE.....	19



Registration number: W6M21409-14466-C-1  
FCC ID: XO82400FS

## **1 General Information**

### **1.1 Notes**

The purpose of conformity testing is to increase the probability of adherence to the essential requirements or conformity specifications, as appropriate.

The complexity of the technical specifications, however, means that full and thorough testing is impractical for both technical and economic reasons.

Furthermore, there is no guarantee that a test sample which has passed all the relevant tests conforms to a specification.

Neither is there any guarantee that such a test sample will interwork with other genuinely open systems.

The existence of the tests nevertheless provides the confidence that the test sample possesses the qualities as maintained and that its performance generally conforms to representative cases of communications equipment.

The test results of this test report relate exclusively to the item tested as specified in 1.5.

The test report may only be reproduced or published in full.

Reproduction or publication of extracts from the report requires the prior written approval of the Worldwide Testing Services(Taiwan) Co., Ltd.

### **Tester:**

September 16, 2014

Ken Kang

Date

WTS-Lab.

Name

Signature

### **Technical responsibility for area of testing:**

September 16, 2014

Kevin Wang

Date

WTS

Name

Signature



# **Worldwide Testing Services(Taiwan) Co., Ltd.**

Registration number: W6M21409-14466-C-1  
FCC ID: XO82400FS

## **1.2 Testing laboratory**

### **1.2.1 Location**

OATS

No.5-1, Lishui, Shuang Sing Village,  
Wanli Dist., New Taipei City 207,  
Taiwan (R.O.C.)

3 meter semi-anechoic chamber

No.35, Aly. 21, Ln. 228, Ankang Rd., Neihu Dist., Taipei City 114, Taiwan (R.O.C.)

TEL:886-2-6613-0228

FAX:886-2-2791-5046

Company

Worldwide Testing Services(Taiwan) Co., Ltd.

6F, NO. 58, LANE 188, RUEY-KUANG RD.

NEIHU, TAIPEI 114, TAIWAN R.O.C.

Tel : 886-2-66068877

Fax : 886-2-66068879

### **1.2.2 Details of accreditation status**

Accredited testing laboratory

A2LA accredited number: 2732.01

FCC filed test laboratory Reg. No. 930600

Industry Canada filed test laboratory Reg. No. IC 5679A-1

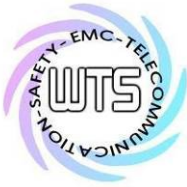


**Test location, where different from Worldwide Testing Services (Taiwan) Co., Ltd. :**

Name:	./.
Accredited number:	./.
Street:	./.
Town:	./.
Country:	./.
Telephone:	./.
Fax:	./.

## **1.3 Details of approval holder**

Name	: Instant Care, Inc.
Street	: 2310 Cousteau Ct Vista,
Town	: CA 92081
Country	: U.S.A
Telephone	: ./.
Fax	: ./.



Registration number: W6M21409-14466-C-1  
FCC ID: XO82400FS

## **1.4 Application details**

Date of receipt of test item: September 9, 2014  
Date of test: from September 10, 2014 to September 16, 2014

## **1.5 Test item**

Description of test item: FALL SENSOR  
Type identification: IC2400FS  
Brand name: Instant Care  
Multi-listing model number: ./.  
Transmitting frequency: 315 MHz  
Operation mode: Simplex  
Voltage supply: Battery 3Vdc (CR2477)

(The device is tested under fresh battery condition.)

Highest clock frequency: 315 MHz  
Antenna type: Monopole Antenna  
Antenna gain: -2.5 dBi  
Photos: see Annex

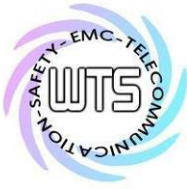
### **Manufacturer (if applicable)**

Name : CLIMAX TECHNOLOGY CO., LTD.  
Street : No. 258, Sinhu 2nd Rd., Neihu District,  
Town : Taipei City 114,  
Country : Taiwan ( R.O.C.)

Additional information: ./.

## **1.6 Test standards**

Technical standard: FCC RULES PART 15 SUBPART C § 15.231 (a) (2013-10)



Registration number: W6M21409-14466-C-1

FCC ID: XO82400FS

## **2 Technical test**

### **2.1 Summary of test results**

No deviations from the technical specification(s) were ascertained in the course of the tests performed.



**or**

The deviations as specified in 3 were ascertained in the course of the tests performed.



### **2.2 Test environment**

Temperature:	23 °C
Relative humidity content:	20 ... 75 %
Air pressure:	86 ... 103 kPa
Details of power supply:	Battery 3Vdc (CR2477)



Registration number: W6M21409-14466-C-1  
FCC ID: XO82400FS

## 2.3 Test equipment utilized

No.	Test equipment	Type	Serial No.	Manufacturer	Cal. Date	Next Cal. Date
ETSTW-CE 001	EMI TEST RECEIVER	ESHS10	842121/013	R&S	2014/9/3	2015/9/2
ETSTW-CE 003	AC POWER SOURCE	APS-9102	D161137	GW	Function Test	
ETSTW-CE 008	HF-EICHLITUNG RF STEP ATTENUATOR 139dB DPSP	334.6010.02	844581/024	R&S	Function Test	
ETSTW-CE 009	TEMP.&HUMIDITY CHAMBER	GTH-225-40-1P-U	MAA0305-009	GIANT FORCE	2014/7/8	2015/7/7
ETSTW-CE 016	TWO-LINE V-NETWORK	ENV216	100050	R&S	2013/10/28	2014/10/27
ETSTW-RE 004	EMI TEST RECEIVER	ESI 40	832427/004	R&S	2014/9/3	2015/9/2
ETSTW-RE 005	EMI TEST RECEIVER	ESVS10	843207/020	R&S	2014/9/3	2015/9/2
ETSTW-RE 012	TUNABLE BANDREJECT FILTER	D.C 0309	146	K&L	Function Test	
ETSTW-RE 013	TUNABLE BANDREJECT FILTER	D.C 0336	397	K&L	Function Test	
ETSTW-RE 018	MICROWAVE HORN ANTENNA	AT4560	27212	AR	2013/10/15	2014/10/14
ETSTW-RE 027	Passive Loop Antenna	6512	00034563	ETS-Lindgren	2014/7/01	2015/6/30
ETSTW-RE 030	Double-Ridged Guide Horn Antenna	3117	00035224	EMCO	2014/2/25	2015/2/24
ETSTW-RE 045	ESA-E SERIES SPECTRUM ANALYZER	E4404B	MY45111242	Agilent	Pre-test Use	
ETSTW-RE 049	TRILOG Super Broadband test Antenna	VULB 9160	9160-3185	Schwarzbeck	2014/2/18	2015/2/17
ETSTW-RE 050	Attenuator 10dB	50HF-010-1	None	JFW	2014/3/3	2015/3/2
ETSTW-RE 051	Attenuator 6dB	50HF-006-1	None	JFW	2014/3/3	2015/3/2
ETSTW-RE 053	Attenuator 3dB	50HF-003-1	None	JFW	2014/3/3	2015/3/2
ETSTW-RE 055	SPECTRUM ANALYZER	FSU 26	200074	R&S	2014/6/05	2015/6/04
ETSTW-RE 060	Attenuator 30dB	5015-30	F651012z-01	ATM	2014/3/3	2015/3/2
ETSTW-RE 062	Amplifier Module	CHC 2	None	KMIC	2013/11/27	2014/11/26
ETSTW-RE 064	Bluetooth Test Set	MT8852B-042	6K00005709	Anritsu	Function Test	
ETSTW-RE 069	Double-Ridged Guide Horn Antenna	3117	00069377	EMCO	Function Test	
ETSTW-RE 072	CELL SITE TEST SET	8921A	3339A00375	HP	2013/10/7	2014/10/6
ETSTW-RE 088	SOLID STATE AMPLIFIER	KMA180265A01	99057	KMIC	2013/10/11	2014/10/10
ETSTW-RE 099	DC Block	50DB-007-1	None	JFW	2014/3/3	2015/3/2
ETSTW-RE 106	Humidity Temperature Meter	TES-1366	091011113	TES	2013/12/04	2014/12/03
ETSTW-RE 111	TRILOG Super Broadband test Antenna	VULB 9160	9160-3309	Schwarz beck	2013/12/27	2014/12/26
ETSTW-RE 112	AC POWER SOURCE	TFC-1005	None	T-Power	Function test	
ETSTW-RE 115	2.4GHz Notch Filter	N0124411	473874	MICROWAVE CIRCUITS	2014/1/10	2015/1/09
ETSTW-RE 120	RF Player	MP9200	MP9210-111022	ADIVIC	Function test	
ETSTW-RE 122	SIGNAL GENERATOR	SMF100A	102149	R&S	2014/6/11	2015/6/10
ETSTW-RE 125	5GHz Notch filter	5NSL11-5200/E221.3-O/O	1	K&L Microwave	2014/8/12	2015/8/11
ETSTW-RE 126	5GHz Notch filter	5NSL11-5800/E221.3-O/O	1	K&L Microwave	2014/8/12	2015/8/11



# Worldwide Testing Services(Taiwan) Co., Ltd.

Registration number: W6M21409-14466-C-1  
FCC ID: XO82400FS

ETSTW-RE 127	RF Switch Box	RFS-01	None	WTS	2014/3/3	2015/3/2
ETSTW-RE 128	5.3GHz Notch filter	N0153001	SN487233	Microwave Circits	2014/8/12	2015/8/11
ETSTW-RE 129	5.5GHz Notch filter	N0555984	SN487234	Microwave Circits	2014/8/12	2015/8/11
ETSTW-RE 130	Handheld RF Spectrum Analyzer	N9340A	CN0147000204	Agilent	Pre-test Use	
ETSTW-GSM 002	Universal Radio Communication Tester	CMU 200	109439	R&S	2013/10/7	2014/10/6
ETSTW-GSM 019	Band Reject Filter	WRCTF824/849-822/851-40 /12+9SS	3	WI	2014/1/10	2015/1/09
ETSTW-GSM 020	Band Reject Filter	WRCD1747/1748-1743/1752-32/5SS	1	WI	2014/1/10	2015/1/09
ETSTW-GSM 021	Band Reject Filter	WRCD1879.5/1880.5-1875.5/1884.5-32/5SS	3	WI	2014/1/10	2015/1/09
ETSTW-GSM 022	Band Reject Filter	WRCT901.9/903.1-904.25-50/8SS	1	WI	2014/1/10	2015/1/09
ETSTW-GSM 023	Power Divider	4901.19.A	None	SUHNER	2014/9/3	2015/9/2
ETSTW-Cable 010	BNC Cable	5 M BNC Cable	None	JYE BAO CO.,LTD.	2014/2/27	2015/2/26
ETSTW-Cable 011	BNC Cable	BNC Cable 1	None	JYE BAO CO.,LTD.	Pre-test Use NCR	
ETSTW-Cable 012	N TYPE To SMA Cable	Cable 012	None	JYE BAO CO.,LTD.	2014/2/27	2015/2/26
ETSTW-Cable 016	BNC Cable	Switch Box	B Cable 1	Schwarz beck	2014/2/27	2015/2/26
ETSTW-Cable 017	BNC Cable	X Cable	B Cable 2	Schwarz beck	2014/2/27	2015/2/26
ETSTW-Cable 018	BNC Cable	Y Cable	B Cable 3	Schwarz beck	2014/2/27	2015/2/26
ETSTW-Cable 019	BNC Cable	Z Cable	B Cable 4	Schwarz beck	2014/2/27	2015/2/26
ETSTW-Cable 022	N TYPE Cable	5006	0002	JYE BAO CO.,LTD.	2014/2/19	2015/2/18
ETSTW-Cable 026	Microwave Cable	SUCOFLEX 104	279075	HUBER+SUHNER	2014/3/3	2015/3/2
ETSTW-Cable 027	Microwave Cable	SUCOFLEX 104	279083	HUBER+SUHNER	2014/3/3	2015/3/2
ETSTW-Cable 028	Microwave Cable	FA147A0015M2020	30064-2	UTIFLEX	2013/10/11	2014/10/10
ETSTW-Cable 029	Microwave Cable	FA147A0015M2020	30064-3	UTIFLEX	2013/10/11	2014/10/10
ETSTW-Cable 030	Microwave Cable	SUCOFLEX 104 (S_Cable 9)	279067	HUBER+SUHNER	2014/3/3	2015/3/2
ETSTW-Cable 031	Microwave Cable	SUCOFLEX 104 (S_Cable 10)	238092	HUBER+SUHNER	2013/11/27	2014/11/26
ETSTW-Cable 043	Microwave Cable	SUCOFLEX 104	317576	HUBER+SUHNER	2013/11/27	2014/11/26
ETSTW-Cable 047	Microwave Cable	SUCOFLEX 104	325518	HUBER+SUHNER	2013/11/27	2014/11/26
ETSTW-Cable 053	N TYPE To SMA Cable	RG142	None	JYE BAO CO.,LTD.	2014/2/19	2015/2/18
ETSTW-Cable 058	Microwave Cable	SUCOFLEX 104	none	HUBER+SUHNER	2014/2/19	2015/2/18
WTSTW-SW 002	EMI TEST SOFTWARE	EZ EMC	None	Farad	Version ETS-03A1	





Registration number: W6M21409-14466-C-1  
FCC ID: XO82400FS

## **2.4 General Test Procedure**

**POWER LINE CONDUCTED INTERFERENCE:** The procedure used was ANSI STANDARD C63.4-2009 5.2 using a 50 $\mu$ H LISN (if necessary). Both lines were observed. The bandwidth of the spectrum analyzer was 10 kHz with an appropriate sweep speed.

**RADIATION INTERFERENCE:** The test procedure used was ANSI STANDARD C63.4-2009 6.4 using a spectrum analyzer. The bandwidth of the spectrum analyzer was 100 kHz with an appropriate sweep speed. The analyzer was calibrated in dB above a microvolt at the output of the antenna. The resolution bandwidth was the 100 kHz and the video bandwidth was 300 kHz.

**FORMULA OF CONVERSION FACTORS:** The Field Strength at 3m was established by adding the meter reading of the spectrum analyzer (which is set to read in units of dB $\mu$ V) to the antenna correction factor supplied by the antenna manufacturer. The antenna correction factors are stated in terms of dB.

Example:

Freq (MHz)	METER READING + ACF + CABLE LOSS (to the receiver) = FS
33	20 dB $\mu$ V + 10.36 dB/m + 6 dB = 36.36 dB $\mu$ V/m @3m

**ANSI STANDARD C63.4-2009 6.3.1 MEASUREMENT PROCEDURES:** The EUT was placed on a table 80 cm high and with dimensions of 1m by 1.5m (non metallic table). The EUT was placed in the center of the table. The table used for radiated measurements is capable of continuous rotation. The spectrum was scanned from 30 MHz to 10<sup>th</sup> harmonic of the fundamental.

Peak readings were taken in three (3) orthogonal planes and the highest readings.

Measurements were made by Worldwide Testing Services(Taiwan) Co., Ltd. at the registered open field test site located at. The Registration Number: **930600**

When an emission was found, the table was rotated to produce the maximum signal strength. At this point, the antenna was raised and lowered from 1m to 4m. The antenna was placed in both the horizontal and vertical planes.

**ANSI STANDARD C63.4-2009 10.2.7:** Any measurements that utilize special test software shall be indicated and referenced in the test report. During testing, test software 'EZ EMC' was used for setting up different operation modes.



Registration number: W6M21409-14466-C-1  
FCC ID: XO82400FS

### 3 Test results (enclosure)

☒ 1st test

☐ test after modification

☐ production test

TEST CASE	Para. Number	Required	Test passed	Test failed
Transmission Requirements	FCC 15.231(a)	<input checked="" type="checkbox"/>	<input checked="" type="checkbox"/>	<input type="checkbox"/>
Radiated Emission	FCC 15.231(b)	<input checked="" type="checkbox"/>	<input checked="" type="checkbox"/>	<input type="checkbox"/>
Bandwidth of Emission	FCC 15.231(c)	<input checked="" type="checkbox"/>	<input checked="" type="checkbox"/>	<input type="checkbox"/>
Frequency Tolerance	FCC 15.231(d)	<input type="checkbox"/>	<input type="checkbox"/>	<input type="checkbox"/>
Period Alternate Field Strength Requirements	FCC 15.231(e)	<input type="checkbox"/>	<input type="checkbox"/>	<input type="checkbox"/>
Antenna Requirement	FCC 15.203	<input checked="" type="checkbox"/>	<input checked="" type="checkbox"/>	<input type="checkbox"/>
Conducted Measurement at (AC) Power Line	FCC 15.207	<input type="checkbox"/>	<input type="checkbox"/>	<input type="checkbox"/>

The following is intentionally left blank.



Registration number: W6M21409-14466-C-1  
FCC ID: XO82400FS

### **3.1 Transmission Requirements**

FCC 15.231(a)

#### **3.1.1 Limit of Transmission Time**

☒ According to 15.231(a)(1), a manually operated transmitter shall employ a switch that will automatically deactivate the transmitter within not more than 5 seconds of being released.

☐ According to 15.231(a)(2), a transmitter activated automatically shall cease transmission within 5 seconds after activation.

#### **3.1.2 Active Time**

☒ This manually operated transmitter employs a switch that automatically deactivate the transmitter within 2.114228 s of being released.

☐ This transmitter is operated by automatic activation and active will cease transmission in \_\_ ms after activation..

Explanation: See attached diagrams in appendix.

Test equipment used: ETSTW-RE 055, ETSTW-RE 004



Registration number: W6M21409-14466-C-1  
FCC ID: XO82400FS

## 3.2 Output Power (Field Strength)

Model: IC2400FS Date: 2014/9/10  
Mode: power Temperature: 24 °C Engineer: Leon  
Polarization: Horizontal Humidity: 60 %

Frequency (MHz)	Reading (dBuV) Peak	Factor (dB)		Result @3m (dBuV/m)		Limit @3m (dBuV/m)		Margin (dB)	Table Degree (Deg.)	Ant. High (cm)
		Corr.	Duty	Peak	Ave.	Peak	Ave.			
314.9770	74.99	16.36	-21.12	91.35	70.23	95.62	75.62	-5.39	140	100

Polarization: Vertical

Frequency (MHz)	Reading (dBuV) Peak	Factor (dB)		Result @3m (dBuV/m)		Limit @3m (dBuV/m)		Margin (dB)	Table Degree (Deg.)	Ant. High (cm)
		Corr.	Duty	Peak	Ave.	Peak	Ave.			
314.9780	50.55	16.36	-21.12	66.91	45.79	95.62	75.62	-29.83	210	100

Limit 15.231(b)

Fundamental Frequency (MHz)	Field strength of fundamental, limit $\mu\text{V/m}$
40.66 – 40.70	2,250
70 – 130	1,250
130 – 174	1,250 to 3,750
174 – 260	3,750
260 – 470	3,750 to 12,500** (315 MHz: $75.62 \text{ dB}\mu\text{V/m} = 6041.677 \mu\text{V/m}$ )
Above 470	12,500

\*\* linear interpolation

Explanation: See attached diagrams in appendix.

Test equipment used: ETSTW-RE 004, ETSTW-RE 111



Registration number: W6M21409-14466-C-1  
FCC ID: XO82400FS

### **3.3 Out of Band Radiated Emissions**

FCC Rule: 15.231(b) , 15.35

For out of band emissions that are close to or that exceed the 20 dB attenuation requirement described in the specification, radiated measurements were performed at a 3 m separation distance to determine whether these emissions complied with the general radiated emission requirement.

Guidance on Measurement of pulsed emission: 15.35(c)

“the measurement field strength shall be determined by averaging over one complete pulse train, including blanking intervals, as long as the pulse train does not exceed 0.1 seconds. As an alternative (provided the transmitter operates for longer than 0.1 seconds) or in cases where the pulse train exceeds 0.1 seconds, the measured field strength shall be determined from the average absolute voltage during a 0.1 second interval during which the field strength is at its maximum value.”

Duty Cycle correction =  $20 \log (\text{dwell time}/100\text{ms or one period})$

Limits:

For frequencies (Average measurements)

Correction factor conform 15.35 (c) (Average measurements)

Duty cycle correction :

Max. Peak reading – duty cycle correction

Max permitted average Limits = Max permitted Fundamental limit – 20 dB

For example for 433.92 fundamental carrier:

Max permitted average Limit:  $80.80 \text{ dB}\mu\text{V/m} - 20 \text{ dB} = 60.80 \text{ dB}\mu\text{V/m}$

For frequencies above 1GHz (Peak measurements).

Modified Limits for peak conform 15.35 (b) = Max Permitted average Limits + 20dB (because Peak detector is used)

Explanation: See attached diagrams in appendix.

Test equipment used: ETSTW-RE 004, ETSTW-RE 030, ETSTW-RE 111,



Registration number: W6M21409-14466-C-1  
FCC ID: XO82400FS

## **3.4 Transmitter Radiated Emissions in restricted Bands**

FCC Rules: 15.231 (b), 15.205, 15.209, 15.35

Radiated emission measurements were performed from 30 MHz to 8000 MHz.

For radiated emission tests, the analyzer setting was as followings:

RES BW VID BW

Frequency <1 GHz 100 kHz 100 kHz (Peak measurements)

Frequency >1 GHz 1 MHz 1 MHz (Peak measurements)

1 MHz 1 MHz (Average measurements)

Limits:

For frequencies below 1GHz :

Frequency of Emission (MHz)	Field strength (microvolts/meter)	Field Strength (dB microvolts/meter)
30 – 88	100	40.0
88 – 216	150	43.5
216 – 960	200	46.0
Above 960	500	54.0

For frequencies above 1GHz (Average measurements).

Guidance on Measurement of pulsed emission:

“If the emission is pulsed, modify the unit for continues operation , use the settings shown above, then correct the reading by subtracting the peak-average correction factor, derived from the appropriate duty cycle calculation.

For frequencies above 1GHz (Average measurements).

The correction factor, based on the channel dwell time in a 100 ms period, may be mathematically applied to a measurement made with an average detector, to further reduce the value.

Duty cycle correction =  $20 \log (\text{dwell time}/100\text{ms})$

No duty cycle correction was added to the reading

Modified Limits for peak conform 15.35 (b) = Max Permitted average Limits + 20dB (because Peak detector is used)

Above 960 MHz

For mode DSSS CW:  $54 \text{ dB}\mu\text{V/m} + 20 \text{ dB} = 74 \text{ dB}\mu\text{V/m}$

Explanation: See attached diagrams in appendix.



Registration number: W6M21409-14466-C-1

FCC ID: XO82400FS

## 3.5 Spurious Emission radiated, Transmitter

Spurious emission was measured with modulation (declared by manufacturer).

The limits on the field strength of the spurious emission in the table § 15.231(b) are based on the fundamental frequency of the intentional radiator. Spurious emission shall be attenuated to the average (or alternatively, CISPR quasi-peak) limits shown in this table or to the general limits shown in § 15.209, whichever limit permits a higher field strength.

In addition, radiated emission which fall in the restricted bands, as defined in § 15.205(a), must also comply with the radiated emission limits specified in § 15.209(a) (See § 15.205(c)).

SAMPLE CALCULATION OF LIMIT. All results will be updated by an automatic measuring system in accordance to point 2.3.

Calculation of test results:

Such factors like antenna correction, cable loss, external attenuation etc. are already included in the provided measurement results. This is done by using validated test software and calibrated test system according the accreditation requirements.

The peak and average spurious emission plots was measured with the average limits.

In the Table being listed the critical peak and average value an exhibit the compliance with the above calculated Limits.

Summary table with radiated data of the test plots

Model: IC2400FS

Date: 2014/9/10

Mode: TX

Temperature: 24 °C

Engineer: Leon

Polarization: Horizontal

Humidity: 60 %

Frequency (MHz)	Reading (dBuV)	Detector	Factor (dB)	Result (dBuV/m)	Limit (dBuV/m)	Margin (dB)	Table Degree (Deg.)	Ant. High (cm)
265.3707	3.29	peak	14.88	18.17	46.00	-27.83	40	100
322.0000	22.90	QP	16.55	39.44	46.00	-6.56	115	100

Frequency (MHz)	Reading (dBuV) Peak	Factor (dB)		Result @3m (dBuV/m)		Limit @3m (dBuV/m)		Margin (dB)	Table Degree (Deg.)	Ant. High (cm)
		Corr.	Duty	Peak	Ave.	Peak	Ave.			
945.2906	24.06	27.92	-21.12	51.98	30.86	75.62	55.62	-24.76	230	100
1575.1500	71.08	-8.51	-21.12	62.57	41.45	74.00	54.00	-12.55	75	100
2204.4090	73.55	-5.69	-21.12	67.86	46.74	74.00	54.00	-7.26	230	100
2833.6670	74.15	-3.76	-21.12	70.39	49.27	74.00	54.00	-4.73	145	100
3466.9340	63.25	-3.00	-21.12	60.25	39.13	75.62	55.62	-16.49	150	100



## **Worldwide Testing Services(Taiwan) Co., Ltd.**

Registration number: W6M21409-14466-C-1  
FCC ID: XO82400FS

Polarization: Vertical

Frequency (MHz)	Reading (dBuV)	Detector	Factor (dB)	Result (dBuV/m)	Limit (dBuV/m)	Margin (dB)	Table Degree (Deg.)	Ant. High (cm)
267.5351	3.15	peak	14.97	18.12	46.00	-27.88	210	100

Polarization: Vertical

Frequency (MHz)	Reading (dBuV) Peak	Factor (dB)		Result @3m (dBuV/m)		Limit @3m (dBuV/m)		Margin (dB)	Table Degree (Deg.)	Ant. High (cm)
		Corr.	Duty	Peak	Ave.	Peak	Ave.			
629.6593	9.74	23.43	-21.12	33.17	12.05	75.62	55.62	-43.57	90	100
945.2906	26.19	27.92	-21.12	54.11	32.99	75.62	55.62	-22.63	75	100
1575.1500	63.14	-8.51	-21.12	54.63	33.51	74.00	54.00	-20.49	130	100
2204.4090	68.97	-5.69	-21.12	63.28	42.16	74.00	54.00	-11.84	220	100
2833.6670	68.80	-3.76	-21.12	65.04	43.92	74.00	54.00	-10.08	160	100
3466.9340	64.35	-3.00	-21.12	61.35	40.23	75.62	55.62	-15.39	175	100

- Note**
1. **Correction Factor = Antenna factor + Cable loss - Preamplifier**
  2. **The formula of measured value as: Test Result = Reading + Correction Factor**
  3. **Detector function in the form : PK = Peak, QP = Quasi Peak, AV = Average**
  4. **All not in the table noted test results are more than 20 dB below the relevant limits.**
  5. **Measurement uncertainty for 3m measurement: 30-1000 MHz =  $\pm 3.68$  dB, 1-18 GHz =  $\pm 5.37$  dB, 18-40 GHz =  $\pm 3.43$  dB ; Reported uncertainties represent expanded uncertainties expressed at approximately the 95% confidence level using a coverage factor of k = 2.**
  6. **See attached diagrams in appendix.**

All other not noted test plots do not contain significant test results in relation to the limits  
Test results: The unit meet the FCC requirements.

Test equipment used: ETSTW-RE 004, ETSTW-RE 030, ETSTW-RE 111





Registration number: W6M21409-14466-C-1  
FCC ID: XO82400FS

### **3.6 Channel Bandwidth**

Measurement of Necessary Bandwidth (BN)

Used frequency	Bandwidth	Limit
314.993 MHz	57.114 kHz	0.7874 MHz

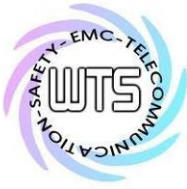
Explanation: The bandwidth fulfills the requirements of FCC § 15.231,

Limits:

The bandwidth of the emission shall be no wider than 0.25% of the center frequency for devices operating above 70 MHz and below 900 MHz. For devices operating above 900 MHz, the emission shall be no wider than 0.5% of the center frequency. Bandwidth is determined at the points 20 dB down from the modulated carrier.

Explanation: See attached diagrams in appendix.

Test equipment used: ETSTW-RE 055, ETSTW-RE 004



Registration number: W6M21409-14466-C-1  
FCC ID: XO82400FS

### **3.7 Antenna requirement**

An intentional radiator shall be designed to ensure that no antenna other than that furnished by the responsible party shall be used with the device. The use of a permanently attached antenna or of an antenna that uses a unique coupling to the intentional radiator shall be considered sufficient to comply with the provisions of this Section. The manufacturer may design the unit so that a broken antenna can be replaced by the user, but the use of a standard antenna jack or electrical connector is prohibited. This requirement does not apply to carrier current devices or to devices operated under the provisions of Sections 15.211, 15.213, 15.217, 15.219, or 15.221. Further, this requirement does not apply to intentional radiators that must be professionally installed, such as perimeter protection systems and some field disturbance sensors, or to other intentional radiators which, in accordance with Section 15.31(d), must be measured at the installation site. However, the installer shall be responsible for ensuring that the proper antenna is employed so that the limits in this Part are not exceeded.

Explanation: This Monopole Antenna is integral antenna which passes antenna requirement.

The equipment meets the requirements	yes <input checked="" type="checkbox"/>	no <input type="checkbox"/>
--------------------------------------	--	--------------------------------



Registration number: W6M21409-14466-C-1  
FCC ID: XO82400FS

### **3.8 Duty Cycle**

The correction factor, based on the channel dwell time in a 100ms period, may be mathematically applied to a measurement made with an average detector, to further reduce the measured value.

Average Reading = Peak Reading (dBuV/m) + Duty Cycle Correction

Duty Cycle Correction =  $20 \log (\text{Cycle})$

In order to determine the Duty Cycle, the EUT is measured as:

Testing Mode	T period (ms)	T on (ms)	Duty Cycle	Duty Cycle Correction $20*\log(\text{Duty Cycle})$
Transmitting Mode	100	8.789579	0.087895792	-21.12

Test equipment used: ETSTW-RE 055, ETSTW-RE 004



Registration number: W6M21409-14466-C-1

FCC ID: XO82400FS

## **3.9 Conducted Measurement at (AC) Power Line**

For an intentional radiator which is designed to be connected to the public utility (AC) power line, the radio frequency voltage that is conducted back onto the AC line on any frequency or frequencies within the band 150 kHz to 30 MHz shall not exceed the limits in the table bellows with this provision shall be based on the measurement of the radio frequency voltage between each power line and ground at the power terminals.

This measurement was transact first with instrumentation using an average and peak detector and a 10 kHz bandwidth. If the peak detector achieves a calculated level, the measurement is repeated by an instrumentation using a quasi-peak detector.

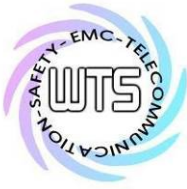
### **Note**

- 1. The formula of measured value as: Test Result = Reading + Correction Factor**
- 2. The Correction Factor = Cable Loss + LISN Insertion Loss + Pulse Limit Loss**
- 3. Detector function in the form : PK = Peak, QP = Quasi Peak, AV = Average**
- 4. All not in the table noted test results are more than 20 dB below the relevant limits.**
- 5. Measurement uncertainty =  $\pm 1.41$  dB; Reported uncertainties represent expanded uncertainties expressed at approximately the 95% confidence level using a coverage factor of  $k = 2$ .**
- 6. This test is not required because the EUT is battery-used.**

### **Limits:**

Frequency of Emission (MHz)	Conducted Limit (dBuV)	
	Quasi Peak	Average
0.15-0.5	66 to 56	56 to 46
0.5-5	56	46
5-30	60	50

Test equipment used: ETSTW-CE 001, ETSTW-CE 003, ETSTW-CE 016, ETSTW-CE 006, ETSTW-RE045



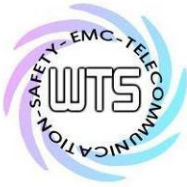
## **Appendix**

### **A. Measurement diagrams**

1. Active Time
2. Channel Bandwidth
3. Output Power
4. Spurious Emissions radiated
5. Duty Cycle

### **B. Photos**

1. External Photos
2. Internal Photos
3. Set Up Photos

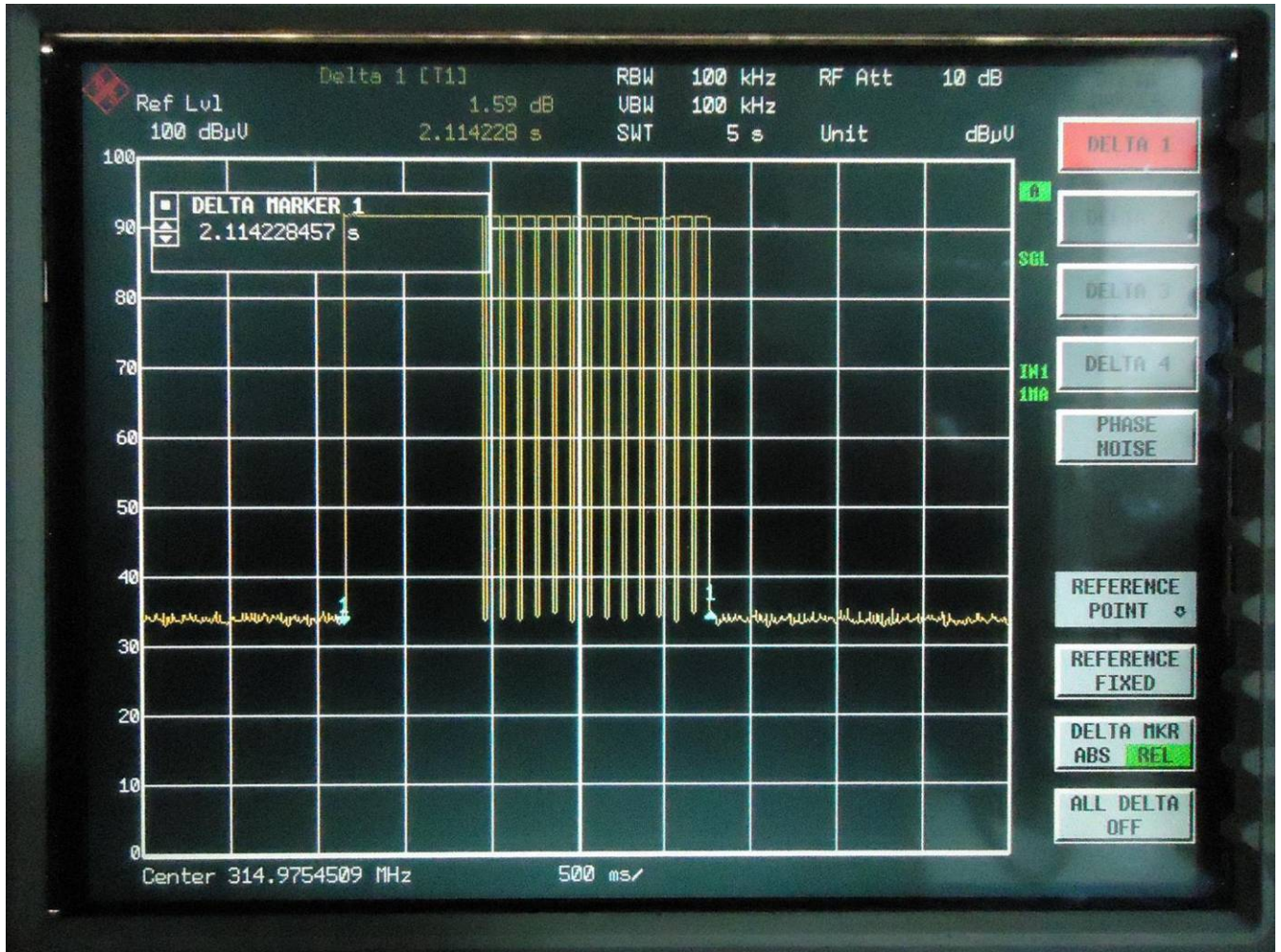


# Worldwide Testing Services(Taiwan) Co., Ltd.

Registration number: W6M21409-14466-C-1

FCC ID: XO82400FS

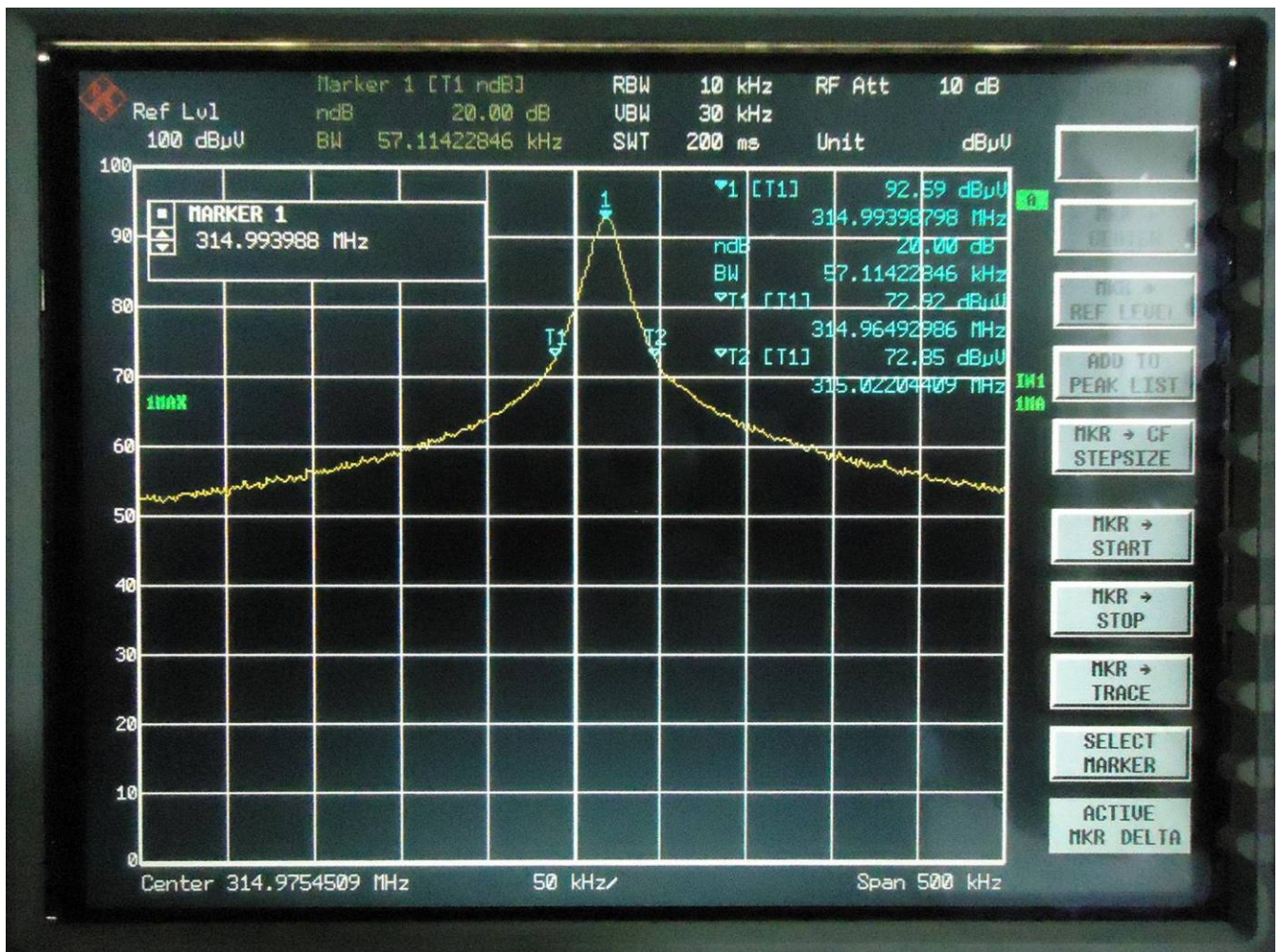
Active time







Registration number: W6M21409-14466-C-1  
FCC ID: XO82400FS  
**Channel Bandwidth**





# Worldwide Testing Services(Taiwan) Co., Ltd.

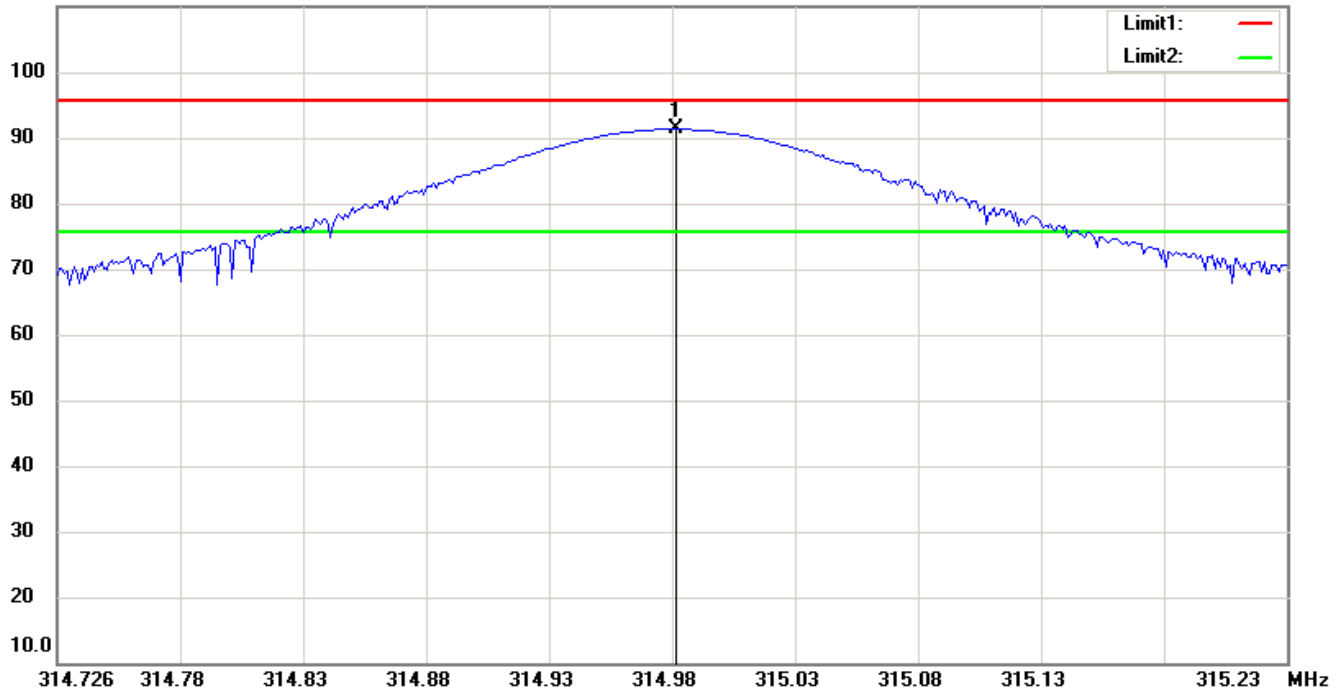
Registration number: W6M21409-14466-C-1

FCC ID: XO82400FS

Output Power

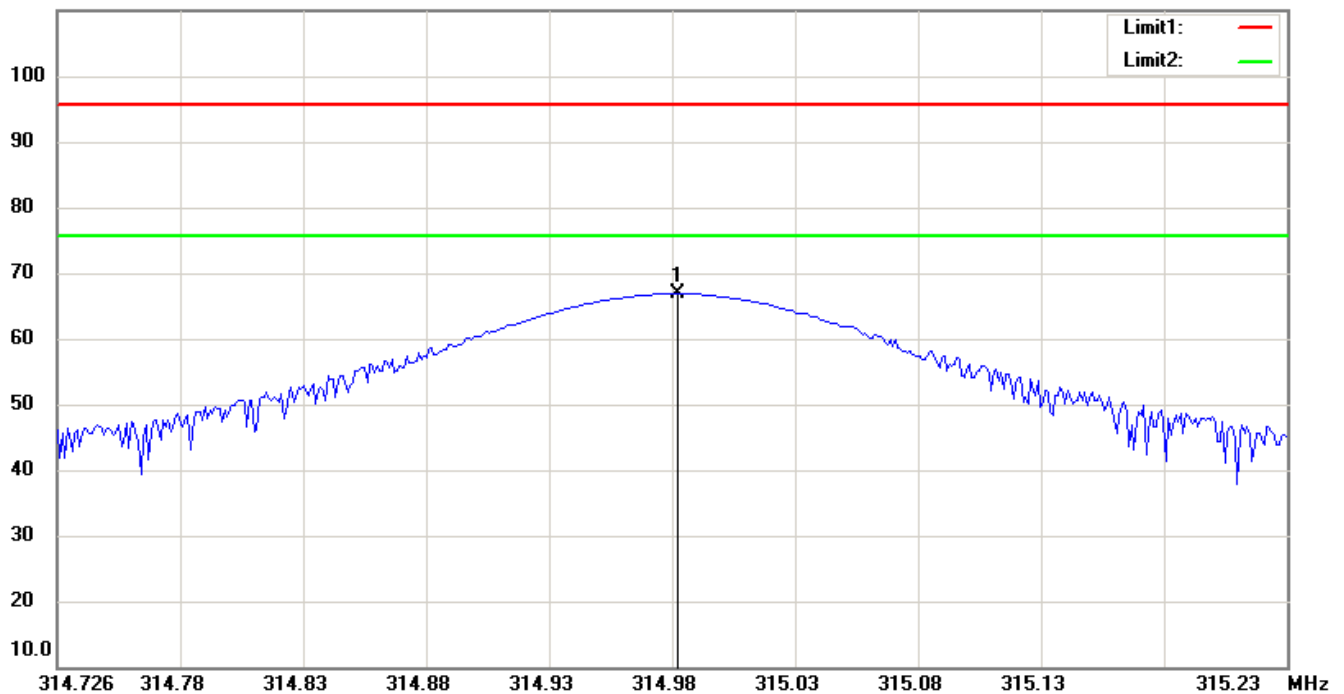
Antenna Polarization H

110.0 dBuV/m



Antenna Polarization V

110.0 dBuV/m



Note:

1. The attached measurement plots are preliminarily pre-scanned with peak detector for determining the final checking frequencies and are for reference only.
2. The some frequencies may exceed the limit line without the specified detectors, but that cannot present the results are failed to the specification of test standard.
3. For corrected test results are listed in the relevant table of field Strength test data of this test report.





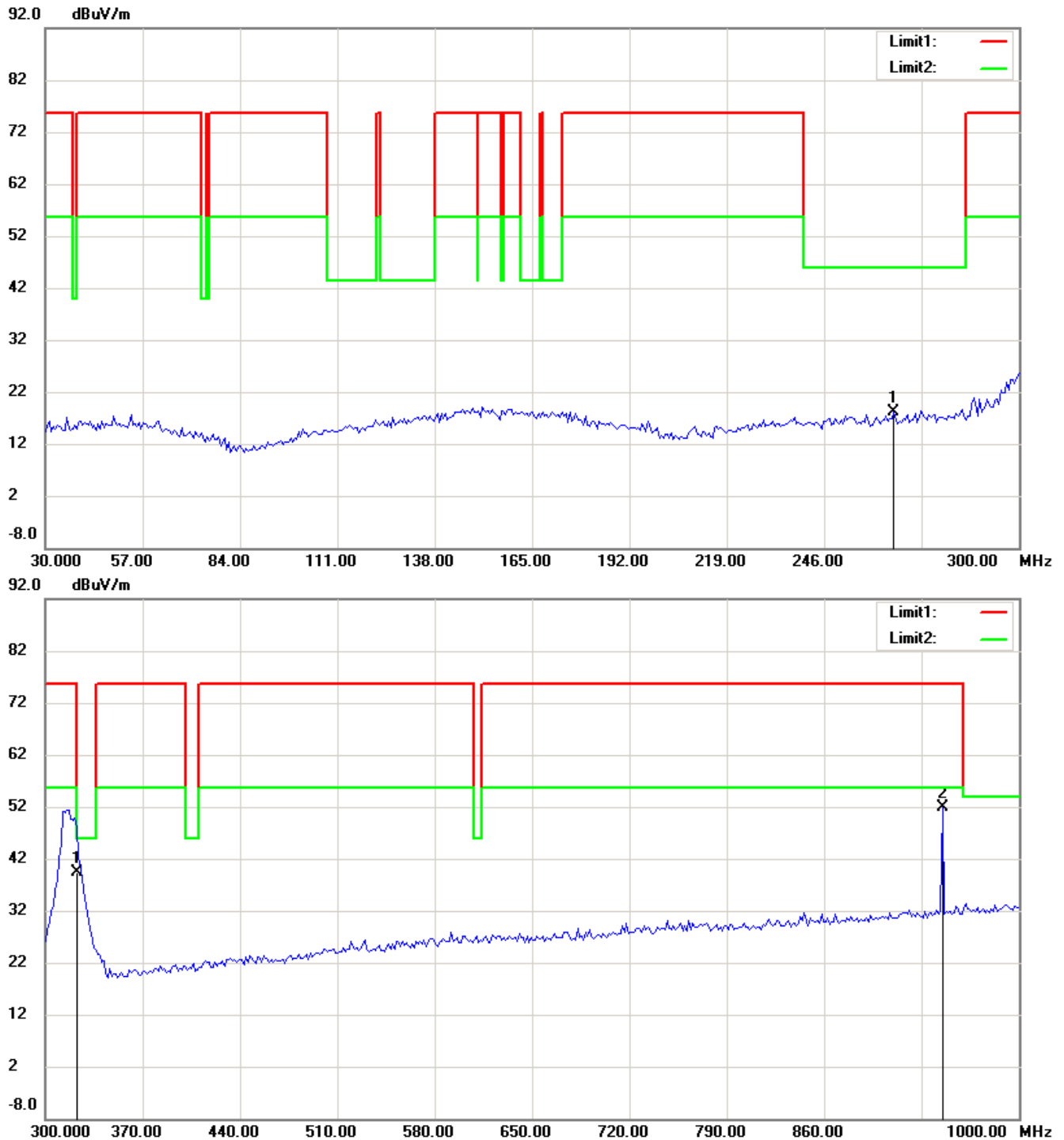
# Worldwide Testing Services(Taiwan) Co., Ltd.

Registration number: W6M21409-14466-C-1

FCC ID: XO82400FS

Spurious Emissions radiated\_TX

Antenna Polarization H



Note:

1. The attached measurement plots are preliminarily pre-scanned with peak detector for determining the final checking frequencies and are for reference only.
2. The some frequencies may exceed the limit line without the specified detectors, but that cannot present the results are failed to the specification of test standard.
3. For corrected test results are listed in the relevant table of radiated test data of this test report.

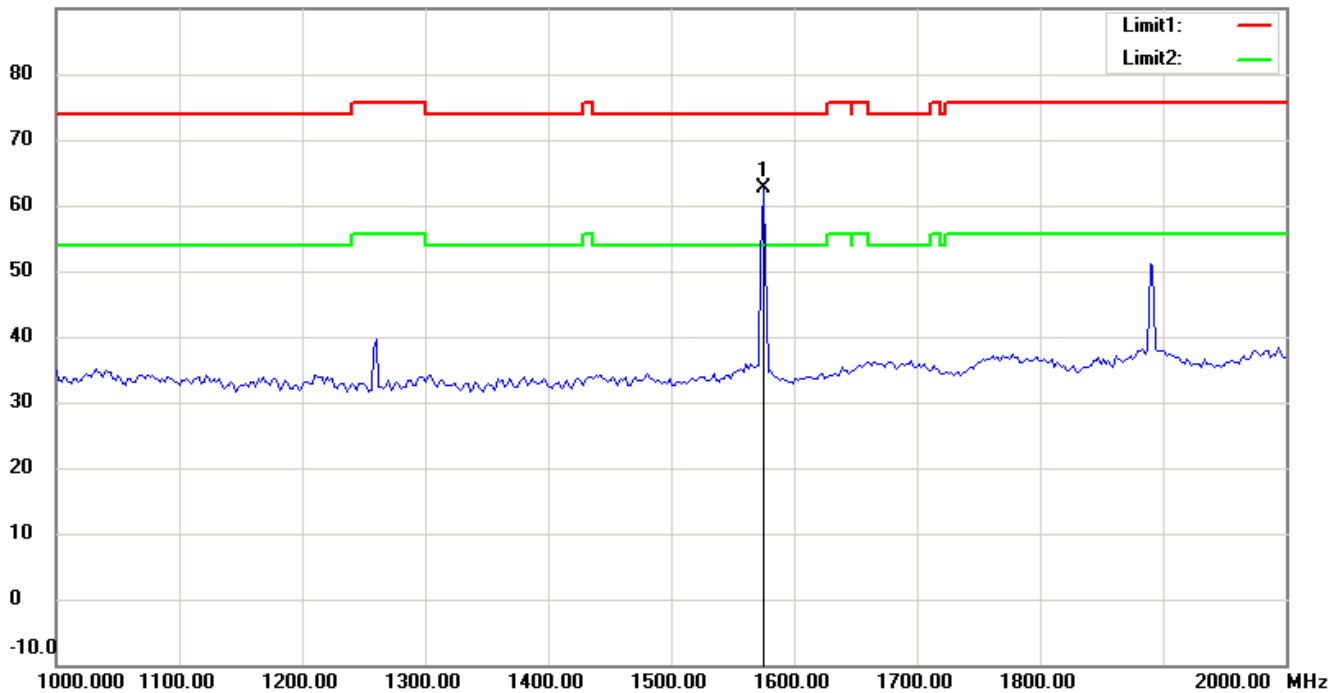


# Worldwide Testing Services(Taiwan) Co., Ltd.

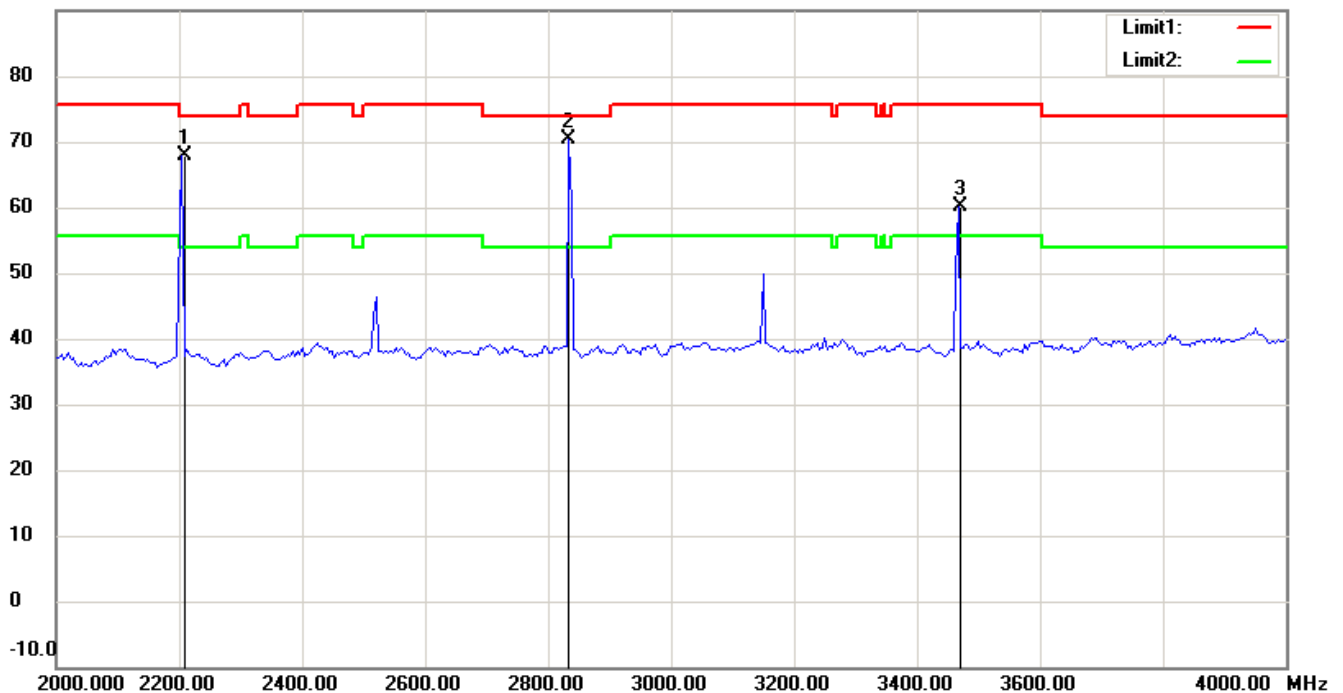
Registration number: W6M21409-14466-C-1

FCC ID: XO82400FS

90.0 dBuV/m

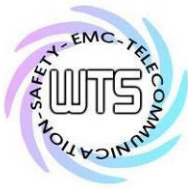


90.0 dBuV/m



## Note:

1. The attached measurement plots are preliminarily pre-scanned with peak detector for determining the final checking frequencies and are for reference only.
2. The some frequencies may exceed the limit line without the specified detectors, but that cannot present the results are failed to the specification of test standard.
3. For corrected test results are listed in the relevant table of radiated test data of this test report.

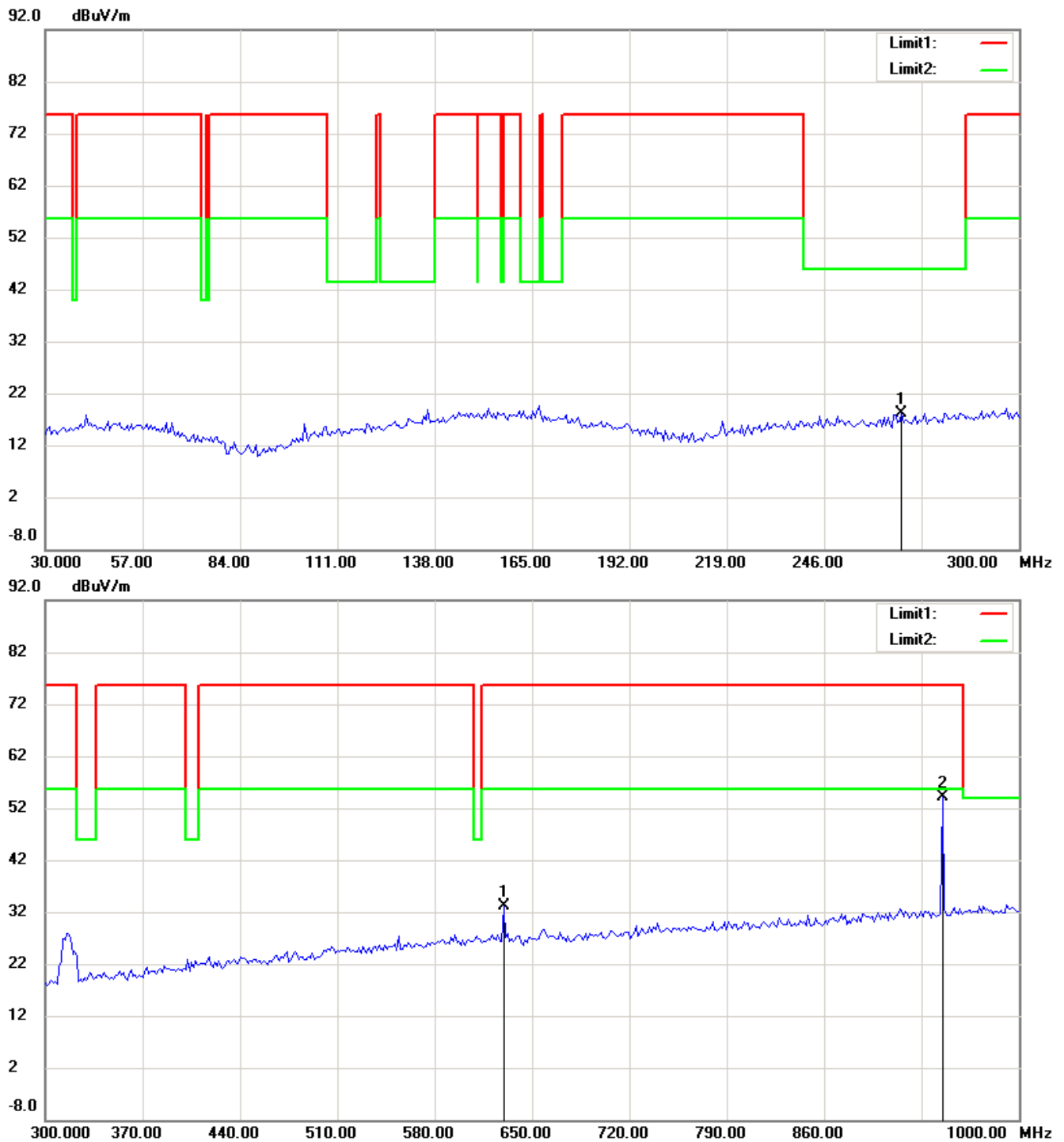


# Worldwide Testing Services(Taiwan) Co., Ltd.

Registration number: W6M21409-14466-C-1

FCC ID: XO82400FS

## Antenna Polarization V



### Note:

1. The attached measurement plots are preliminarily pre-scanned with peak detector for determining the final checking frequencies and are for reference only.
2. The some frequencies may exceed the limit line without the specified detectors, but that cannot present the results are failed to the specification of test standard.
3. For corrected test results are listed in the relevant table of radiated test data of this test report.

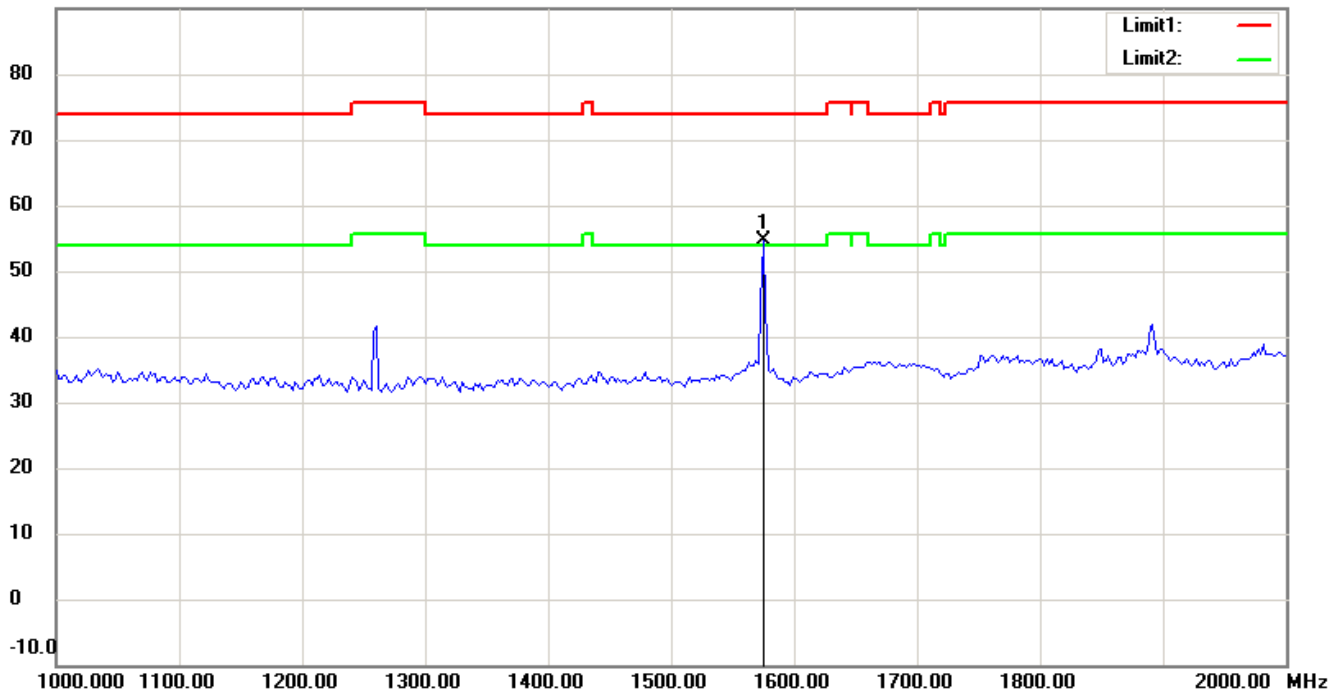


# Worldwide Testing Services(Taiwan) Co., Ltd.

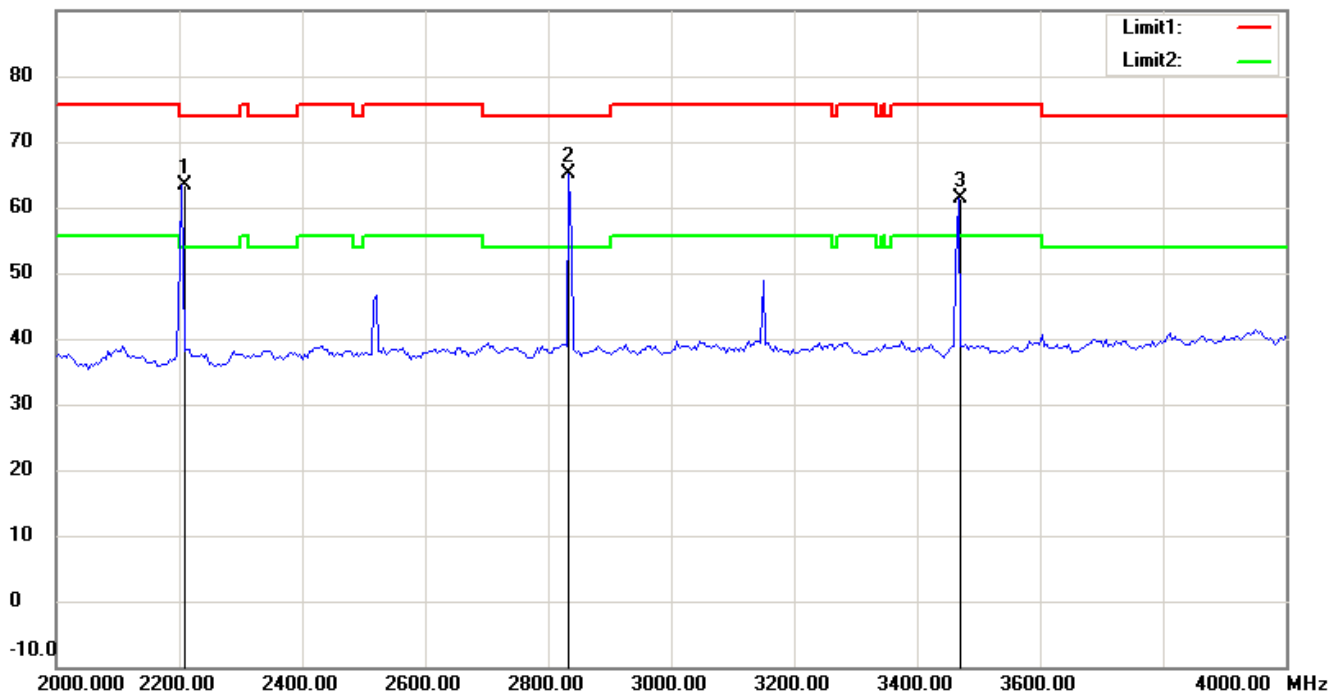
Registration number: W6M21409-14466-C-1

FCC ID: XO82400FS

90.0 dBuV/m



90.0 dBuV/m



Note:

1. The attached measurement plots are preliminarily pre-scanned with peak detector for determining the final checking frequencies and are for reference only.
2. The some frequencies may exceed the limit line without the specified detectors, but that cannot present the results are failed to the specification of test standard.
3. For corrected test results are listed in the relevant table of radiated test data of this test report.

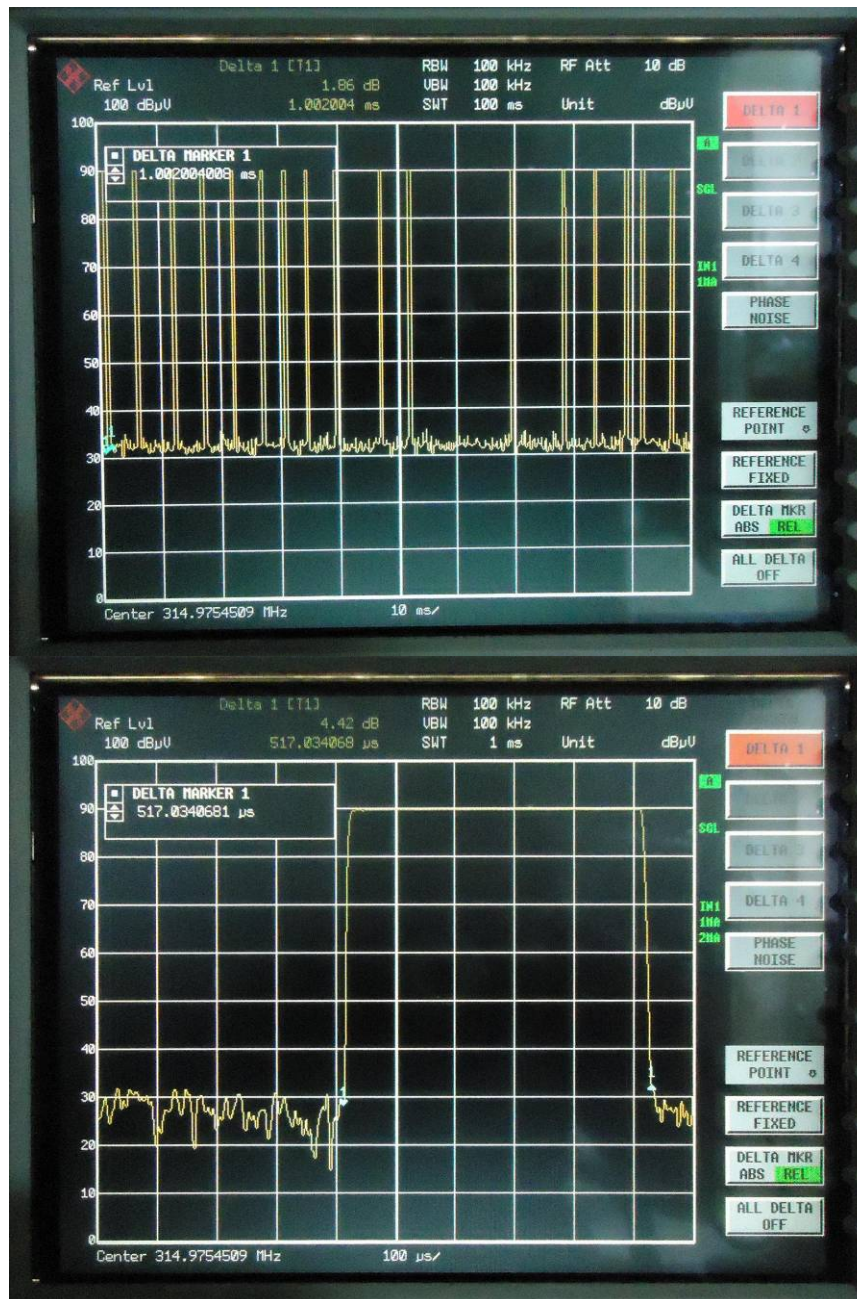


# Worldwide Testing Services(Taiwan) Co., Ltd.

Registration number: W6M21409-14466-C-1

FCC ID: XO82400FS

## Duty Cycle



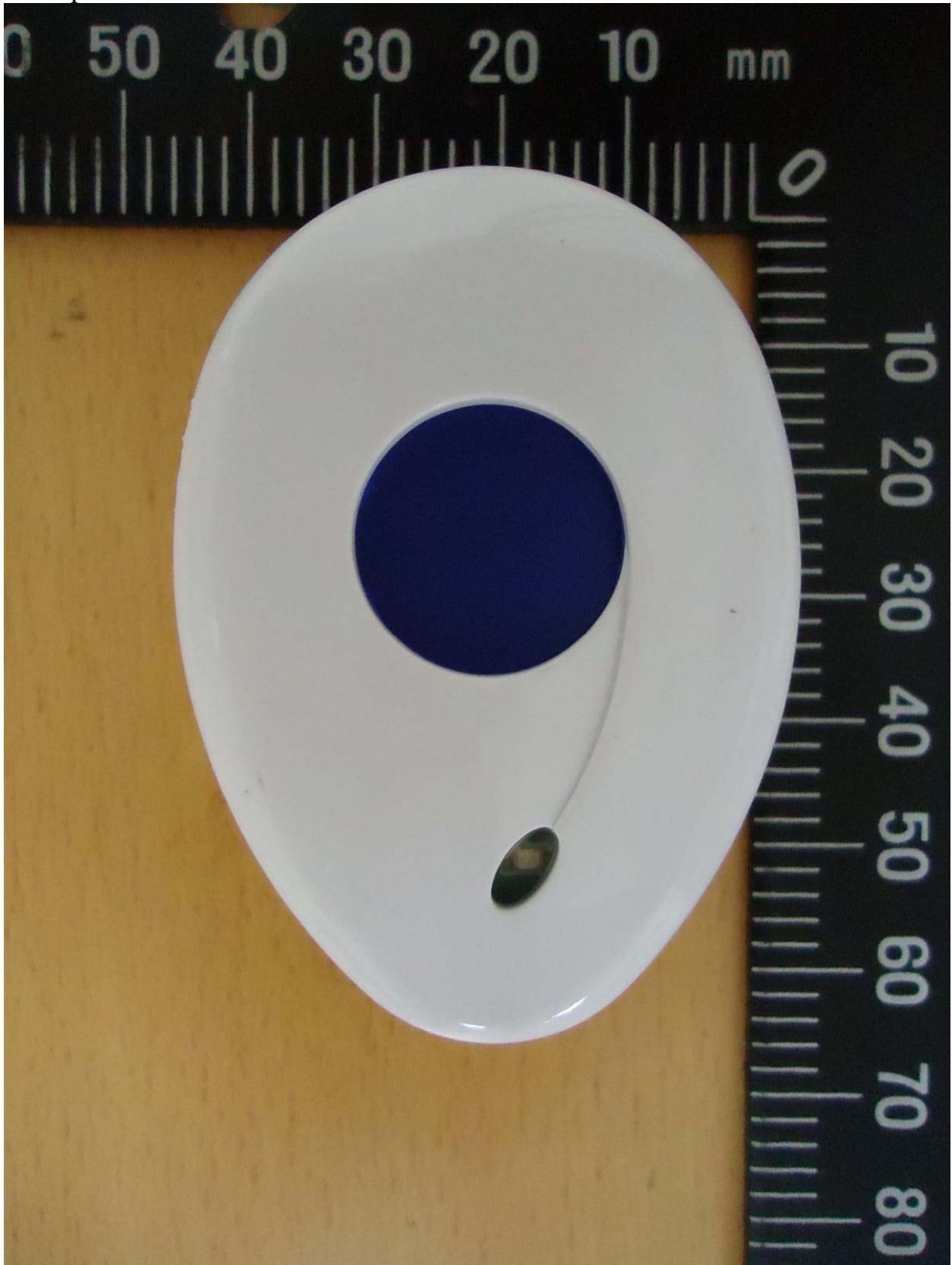


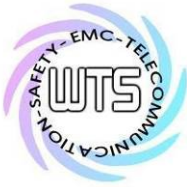


Registration number: W6M21409-14466-C-1

FCC ID: XO82400FS

External photos





Registration number: W6M21409-14466-C-1  
FCC ID: XO82400FS







Registration number: W6M21409-14466-C-1  
FCC ID: XO82400FS

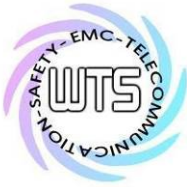






Registration number: W6M21409-14466-C-1  
FCC ID: XO82400FS





Registration number: W6M21409-14466-C-1  
FCC ID: XO82400FS







Registration number: W6M21409-14466-C-1  
FCC ID: XO82400FS



Registration number: W6M21409-14466-C-1

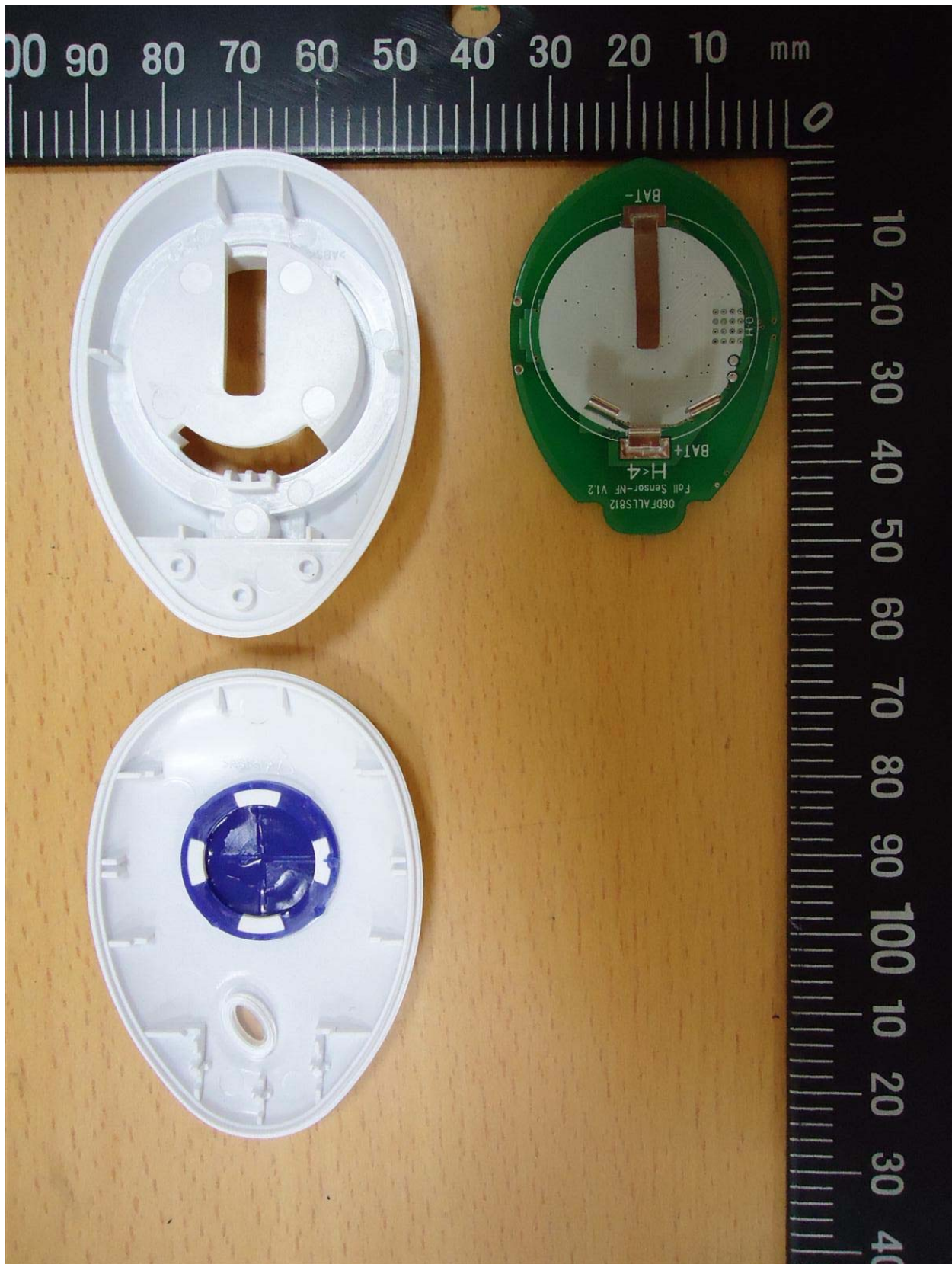
FCC ID: XO82400FS

Internal photos



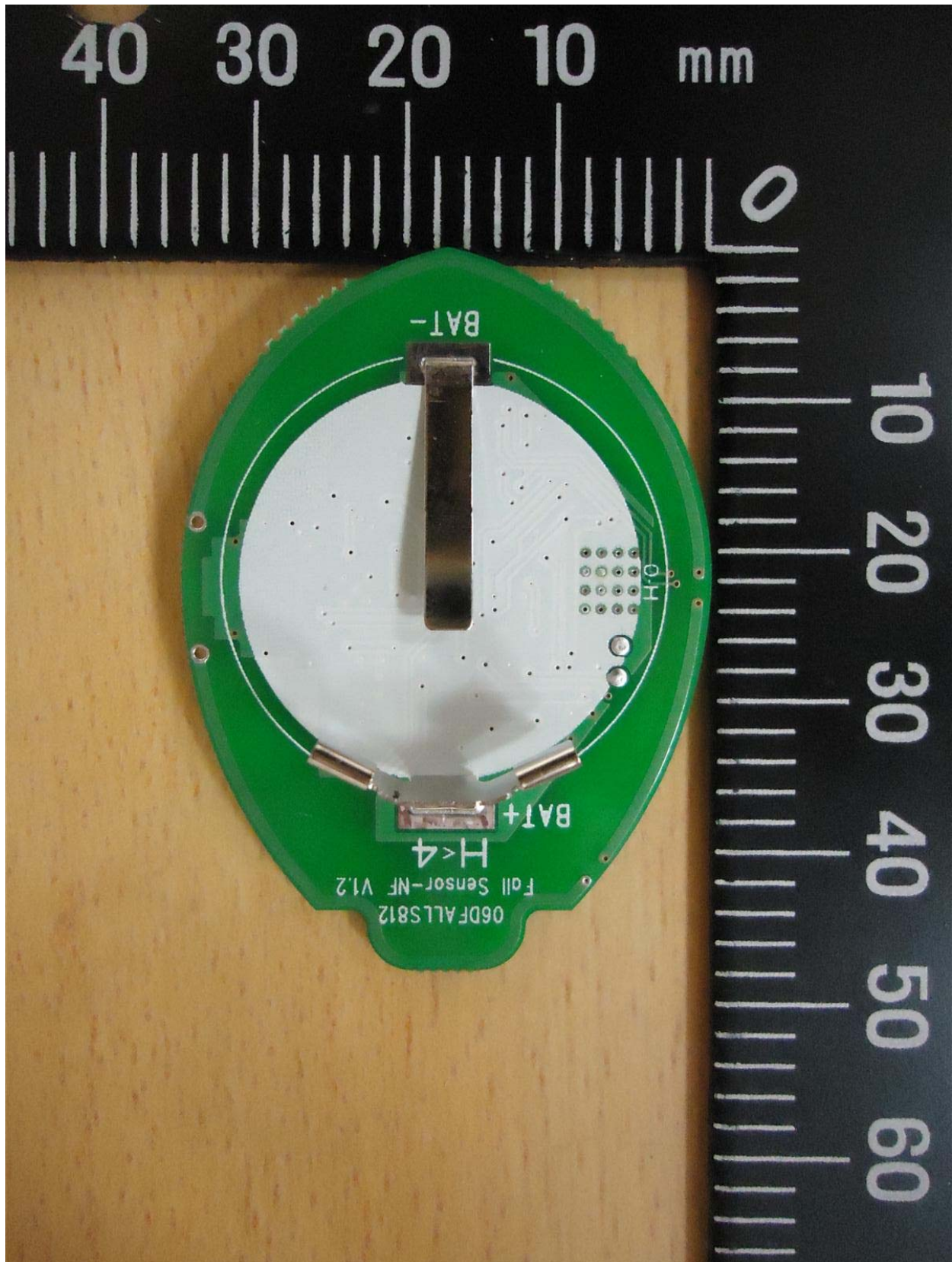


Registration number: W6M21409-14466-C-1  
FCC ID: XO82400FS



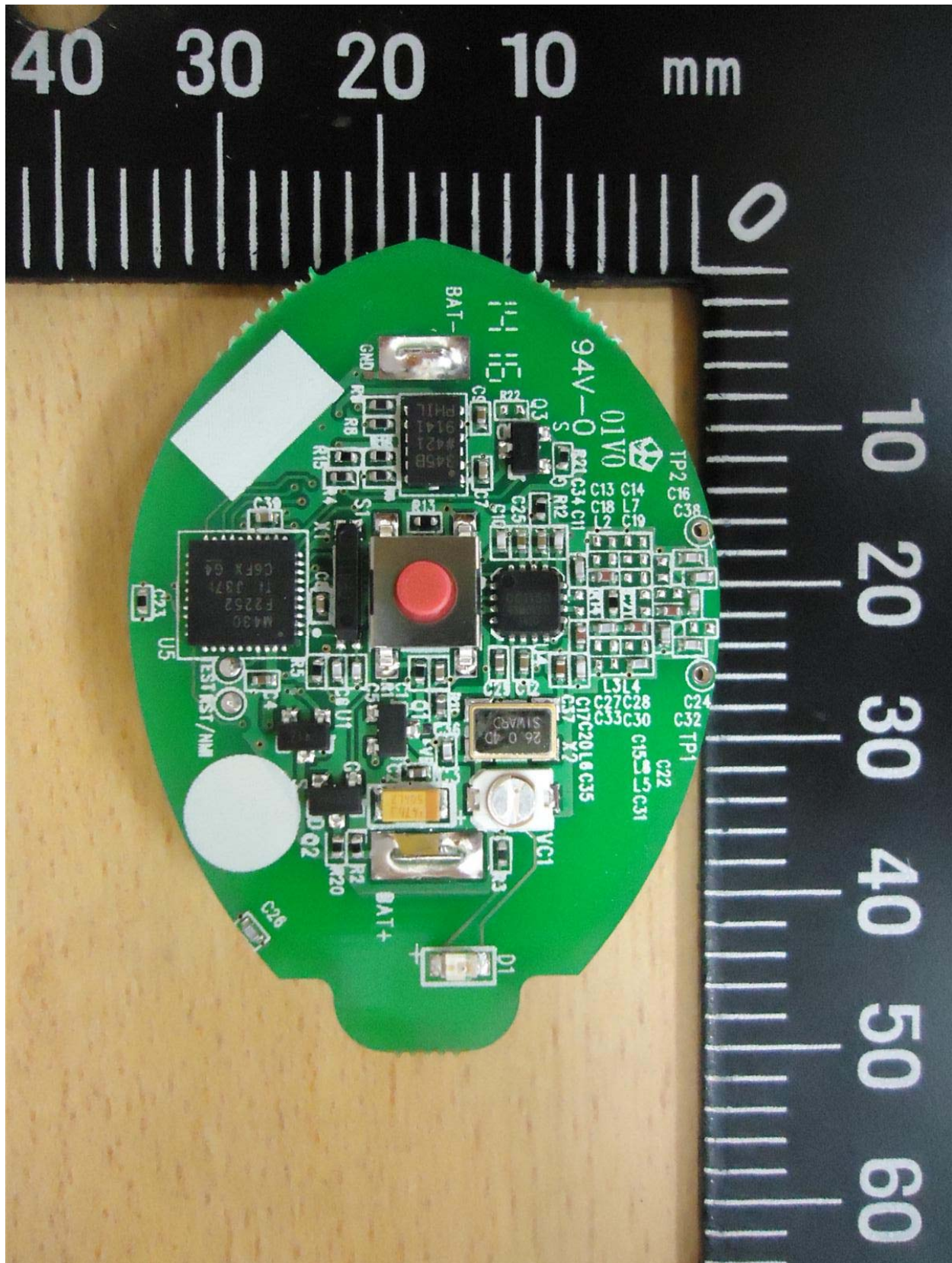


Registration number: W6M21409-14466-C-1  
FCC ID: XO82400FS

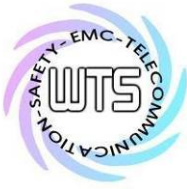




Registration number: W6M21409-14466-C-1  
FCC ID: XO82400FS







# Worldwide Testing Services(Taiwan) Co., Ltd.

Registration number: W6M21409-14466-C-1  
FCC ID: XO82400FS

Set Up photos

