

# **Superyun Linktool V2.6 User Manual**

## **Table of Contents**

- 1 Linktool UI description**
- 2 Manual Search 2G network and Dial-up**
- 3 Manual Search 3G network and Dial-up**
- 4 Auto Search and Dial-up**
- 5 Fault Treatment**

## 1. Linktool UI description

Double Click the Desktop shortcut icon to startup Linktool client, Now Linktool is initializing and detecting the device, Wait for several seconds, flash as below.



Linktool init Ok, into main UI




### 1.1 TitleBar





From here, you can open the help file, minimize the main dialog and close it.


### 1.2 Register status indication


The status bar indicates the registering status of network:

: No registering into the network!

: Registering into the network of GPRS!

: Registering into the network of EDGE!

: Registering into the network of WCDMA!

: Registering into the network of HSDPA!

### 1.3 Signal indication



### 1.4 Menu bar



### 1.5 About info

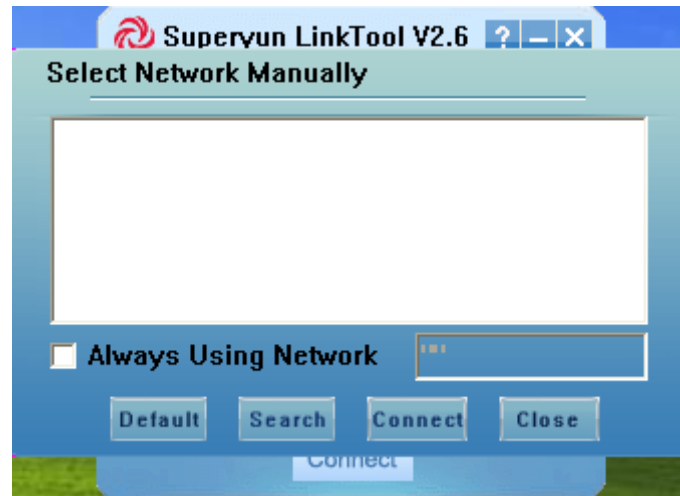
Select Menu, click “About”



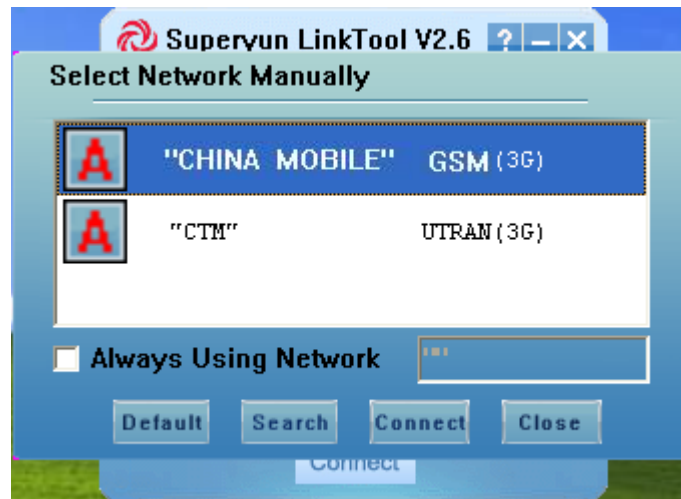
From here, you can visit our website by click “<http://www.superyun.com>”

## 2 Manual Search 2G network and Dial-up

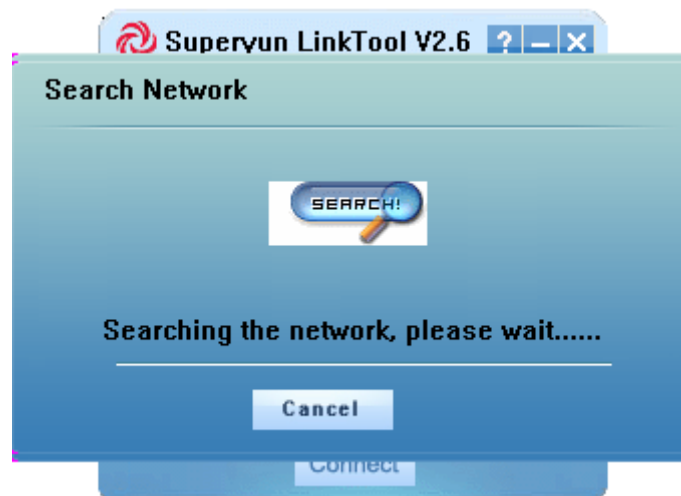
2.1 Select Menu, Click “network”,



2.2 Click “Search” to search network,

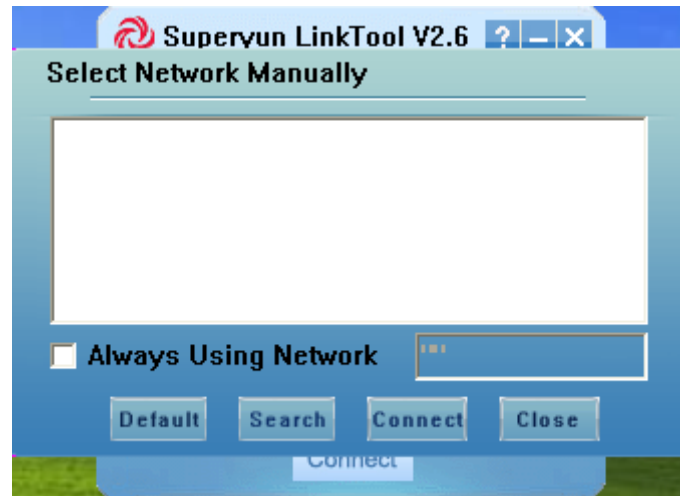


2.3 select 2G network, click “Connect”,start connect to network

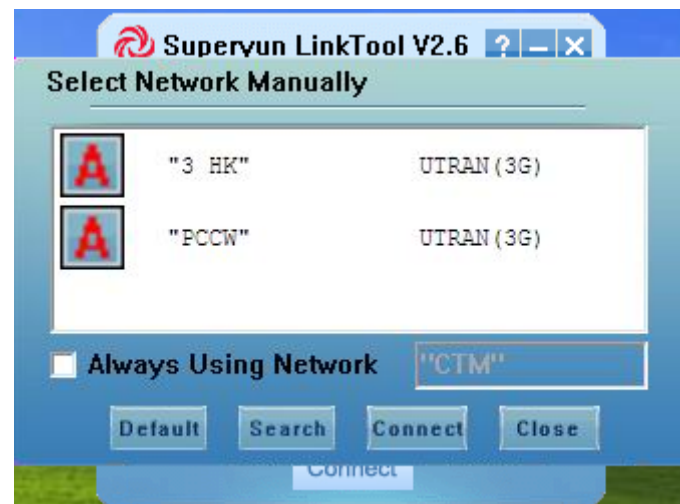


### 3 Manual Search 3G network and Dial-up

3.1 Select Menu, Click “network”,



3.2 Click “Search” to search network,



3.3 select 3G network, click “Connect”,start connect to network



Remark:

When select “Always Using Network” and select a network, Auto mode will connect to network with this setting first, auto search and dial-up will start if it can’t connect to network

## 4 Auto Search and Dial-up

In main UI, Click “Connect” directly, then Linktool go to auto mode, if user has selected default network by selecting “Always Using Network”, it will connect the special network, otherwise, auto search and dial-up will start and it will select a network of good coverage to register, then connect to the network.



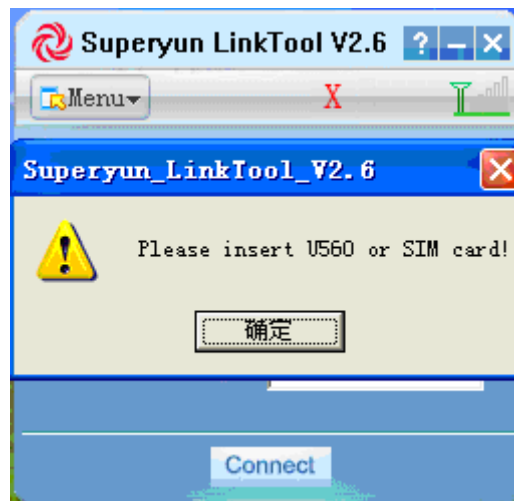
## 5 Fault Treatment

### 5.1 No device



If Linktool pop up this windows when start-up, start search or connect, then check if the device is connecting to PC or Notebook or not, if do , plug out it and plug in again

## 5.2 No SIM card



If Linktool pop up this windows when start-up, start search or connect, then check if the SIM card is inserting device, if do , get it out and plug in again

## 5.3 Can't search and connect network

1. check in service area or not, have signal or not currently
2. check service content for the SIM card
3. check network setting in main UI, for example : APN ,Dial No, username ,password

FCC RF Exposure requirements: The highest SAR value reported under this standard during product certification for use next to the body is 0.976 W/kg. This transmitter must not be collocated or operating in conjunction with any other antenna or transmitter. USB dongle transmitter is approved for use in typical laptop computers. To comply with FCC RF exposure requirements, it should not be used in other devices or certain laptop and tablet computer configurations where the USB connectors on the host computer are unable to provide or ensure the necessary operating configurations intended for the device and its users or bystanders to satisfy RF exposure compliance requirements.

This device complies with part 15 of the FCC rules. Operation is subject to the following two conditions: (1) this device may not cause harmful interference, and (2) this device must accept any interference received, including interference that may cause undesired operation.

**NOTE:** The manufacturer is not responsible for any radio or TV interference caused by unauthorized modifications to this equipment. Such modifications could void the user's authority to operate the equipment.

**NOTE:** This equipment has been tested and found to comply with the limits for a Class B digital device, pursuant to part 15 of the FCC Rules. These limits are designed to provide reasonable protection against harmful interference in a residential installation. This equipment generates uses and can radiate radio frequency energy and, if not installed and used in accordance with the instructions, may cause harmful interference to radio communications. However, there is no guarantee that interference will not occur in a particular installation. If this equipment does cause harmful interference to radio or television reception, which can be determined by turning the equipment off and on, the user is encouraged to try to correct the interference by one or more of the following measures:

- Reorient or relocate the receiving antenna.
- Increase the separation between the equipment and receiver.
- Connect the equipment into an outlet on a circuit different from that to which the receiver is connected.
- Consult the dealer or an experienced radio/TV technician for help