

# Statement

We Quectel Wireless Solutions Co., Ltd declare the following models.

**Product Name:** Multi-mode Smart LTE Module

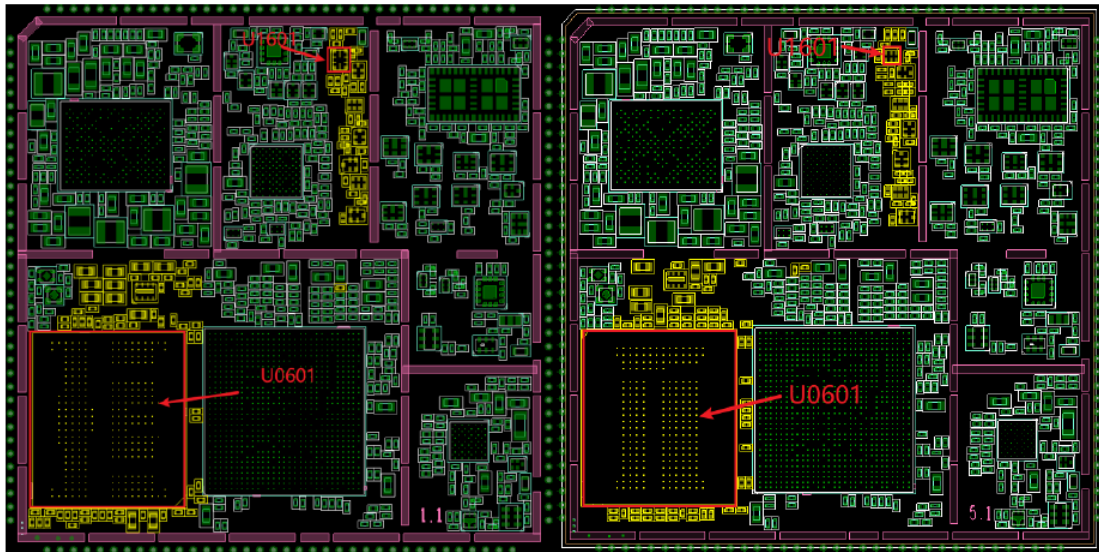
**Model Number:** SC200E-NA

**Hardware version:** Refer to below table

Model		LPDDR4X version	LPDDR3 version
SC200E-NA	Hardware Version	R1.0	R1.1
	Software Version	SC200ENANAR01A03	SC200ENATAR02A01

R1.0 and R1.1 share the similar HW and SW design, the difference is just as follow:  
Software Version is only to distinguish between two versions, and the RF settings and function are the same

1. SC200E-NA R1.0 version is LPDDR4X version, SC200E-NA R1.1 version is LPDDR3 version
2. The circuit design of hardware DDR part (U0601) and GPS Rx Dual filter (U1601) is different.



SC200E-NA R1.0

SC200E-NA R1.1

Main component's Difference Table

Designator	SC200E-NA R1.0 (Part Description)	SC200E-NA R1.1 (Part Description)
U1601	SAWFD1G20AA0F0AR15	SAWFZ1G17AB0E0AR1X
U0601	KM4X6001KM-B321	KMQE60013B-B318

We hereby state that there is no any other internal difference between them and the

change is layout part of DDR which won't affect the RF portions

LPDDR4X version full test, LPDDR3 version Spot check LPDDR4X version worse mode, The test plan reference is as follows:

Standard	Remark
EMC	LPDDR4X version full test LPDDR3 version check worse
Radio(WWAN/WLAN)	LPDDR4X version full test LPDDR3 version check power & rse worse mode
RF Exposure	LPDDR4X version full test LPDDR3 version follows LPDDR4X

Your assistance on this matter is highly appreciated.

Sincerely,

*Jean Hu*

**Name:** Jean Hu

**Title:** Certification Manager