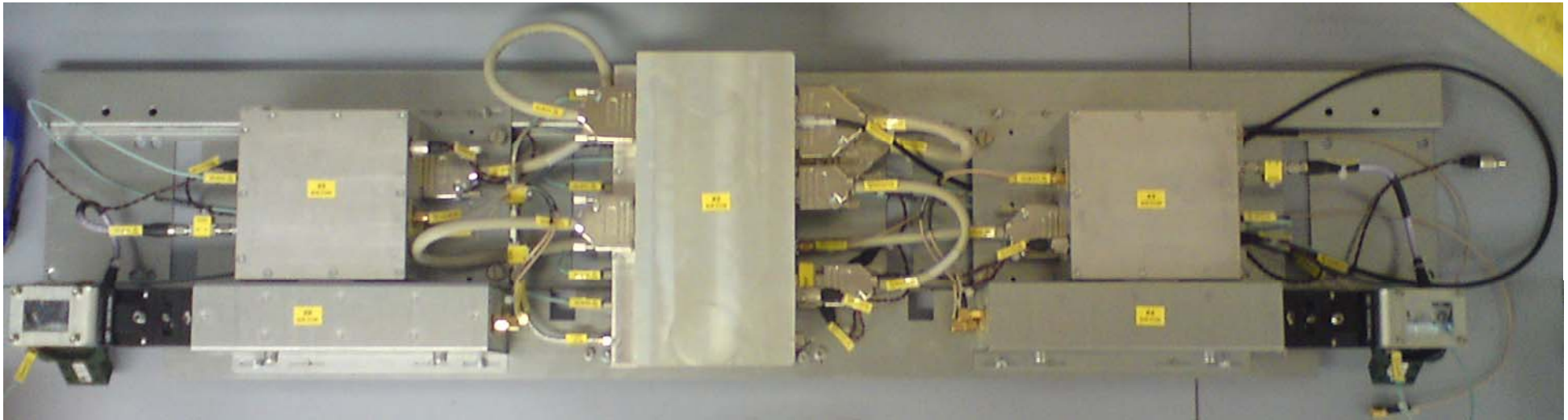


eqo™ Arch – Internal Product Photographs



Transceiver – Internal Construction

There are six different printed circuit boards for the transceiver namely:

- 1) Z7110108-P
- 2) Z7110112-P
- 3) Z7110116-P
- 4) Z7110120-P
- 5) Z7110124-P
- 6) Z7110132-P

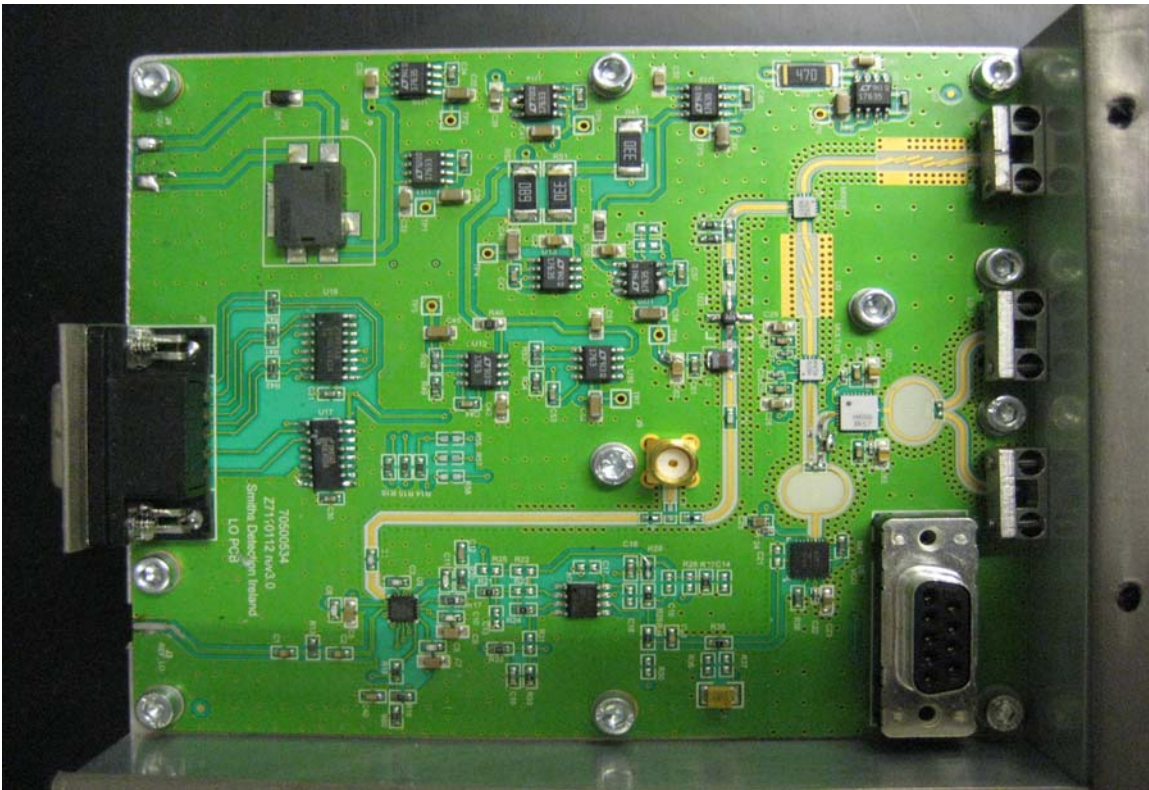
Z7110116-P is only PCB which has components on top and bottom sides. Both sides are pictured below.

All other PCBs are single sided.

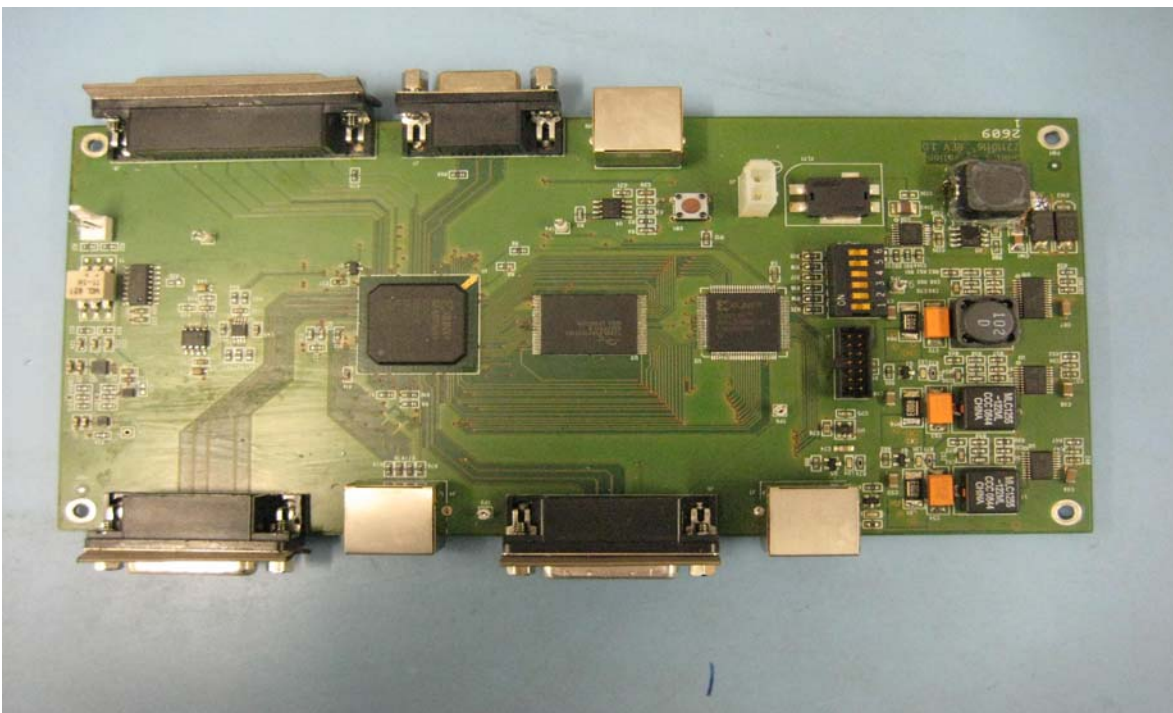
- **Z7110108-P**



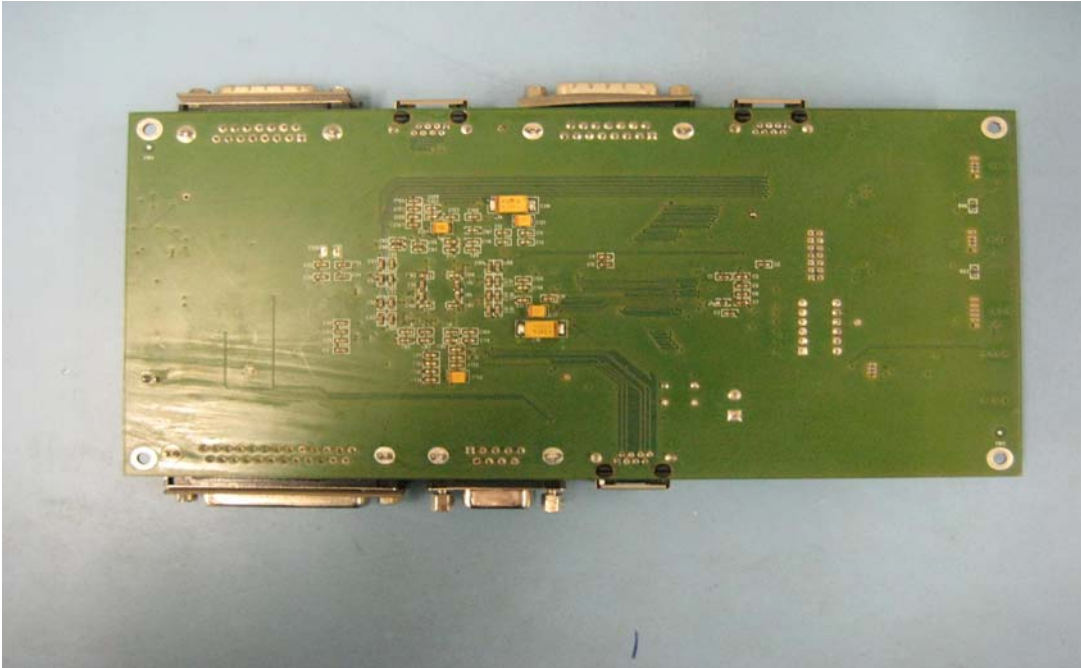
- **Z7110112-P**



- **Z7110116-P (TOP)**



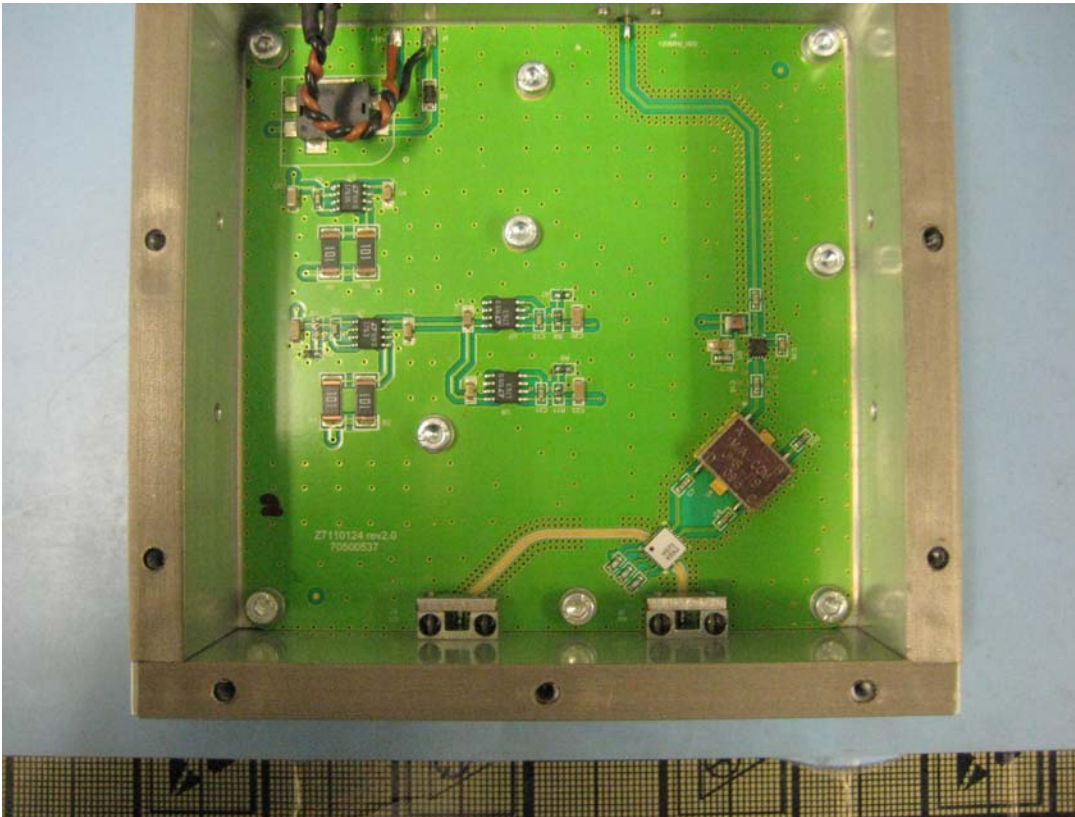
- **Z7110116-P (Bottom)**



- **Z7110120-P**



- **Z7110124-P**



- **Z7110132-P**

