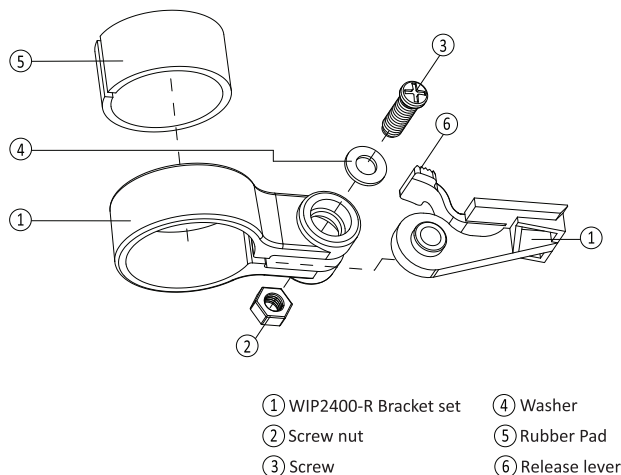


## Mounting Instruction

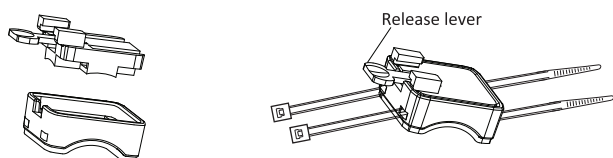
### ●WIP2400-R Bracket

1. Attach the bracket set to the seat post securely.
2. Place the rubber pad in the bracket to keep the bracket from loosening.
3. Follow the diagram to attach screw nut, washer and screw.
4. Turn the screw through the screw hold.
5. Install WIP2400-R to the bracket. The light should be horizontal.
6. To release the main unit, press down on the release lever and slide it out.

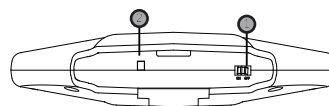


### ●WIP2400-T Bracket

1. Attach WIP2400-T bracket securely using two cable ties. Make sure the cable ties are threaded through both parts of the bracket as shown in the figure.
2. Place the bracket on the left of stem or handlebar.
3. Slide WIP2400-T down until it snaps into place.
4. To release the main unit, press down on the release lever and slide it out.



## The Function of WIP2400-R

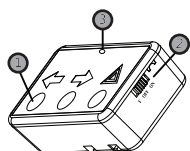


	Receiver	Action
1	Right Indicator	Right LED light is active steady and right orange LED lights flash continuously in proper order from left to right.
2	Left Indicator	Left LED light is active steady and left orange LED lights flash continuously in proper order from right to left.
3	Hazard Light	Red LED lights are active steady, at the same time orange LED lights flash every 0.5 second.
4	Rear Light	Red LED lights flash.
5	Brake Light	When senses slowing down motion, 10 LED lights turn on automatically.
6	Low Battery Power Status	Yellow LED light turns on when the Battery Voltage is below 1.2V.
7	Bicycle Location Finder	10 LED lights flash 3 times, then turn off.

Note : Once slide F, WIP2400-R switches in Bicycle Location Finder automatically. Before you leave, please remember to release WIP2400-T from the bicycle. When finding bicycle, Bicycle Location Finder works within 10 meters.

3

## The Function of WIP2400-T



	Touch Sensor	Action
1	On	Turn on W2400-T
2	Off	Turn off W2400-T
3	F : Slide F once	Bicycle Location Finder on.
4	Touch Left Button Once	The left turning signal flashes 15 seconds.
5	Touch Left Button the second time	The left turning signal turns off.
6	Touch Right Button Once	The right turning signal flashes 15 seconds.
7	Touch Right Button the second time	The right turning signal turns off.
8	Touch Warning Signal Once	10 LED lights turn on and flashes.
9	Touch Warning Signal the second time	10 LED lights turn off.
10	Low Battery Power Status Yellow Indicator	Yellow LED light will be activated when the power is below 1.2V.

## Troubles Shooting

Problem Description	Solution
WIP2400-R has no response	Please check whether the switch is on. Please check the battery is correctly inserted with the (+) and (-). If you use rechargeable batteries, please check the batteries are fully charged.
WIP2400-T has no response	Please check whether the finger is clean. Please check the panel is clean.

## Contact Information

Name : Wireless Bicycle Indicator 2400 (5 in 1)  
Model : WIP2400  
Manufacture : LINEARITY ELECTRONICS CO., LTD  
Website : [www.linearity.com.tw](http://www.linearity.com.tw)  
Email : [service@linearity.com.tw](mailto:service@linearity.com.tw)

Warranty Card (WIP2400)	
Purchase Date	Authorized Dealer
/ / (Y/M/D)	
Barcode	

1. In order to secure your right, please make sure that the authorized dealer fills in all the information and the warranty is one year from date of purchasing.
2. Without the stamp of authorized dealer or incomplete information, the warranty is from the shipping date of the product.
3. Cable ties, batteries, and other accessories are not warranted.
4. This Limited Warranty does not apply to below conditions:
  - a. Damages or defects due to disassemble, modify and assemble the product by non-authorized person.
  - b. Damages or defects due to incorrect operate or usage of the product.