



Shenzhen VITE Technology Co., Ltd  
Tel: +86-755-89486194 Fax: +86-755-89486187

## FCC PART 15 SUBPART C TEST REPORT

### FCC PART 15C

**Report Reference No.**.....: **VITE0907003R**

Compiled by

( position+printed name+signature)...: File administrators Andy Zhang

*Andy Zhang*

Supervised by

( position+printed name+signature)...: Test Engineer Andy Zhang

*Andy Zhang*

Approved by

( position+printed name+signature)...: Manager Tracy Qi

*Tracy Qi*

Date of issue.....: July 14, 2009

**Testing Laboratory Name** .....: **Shenzhen VITE Technology Co., Ltd**

Address.....: Room 1702, Building 1A, Xi'an Guandi, 87 District Xin'an, Bao'an District, Shenzhen 518101, P.R. China

**Applicant's name**.....: **Shenzhen Qingsongfa Company Ltd.**

Address.....: Rm504, 22Block, Yueliangwan Garden, Nanshan District, Shenzhen

#### Test specification:

Standard .....: **FCC Part 15C**

TRF Originator.....: Shenzhen VITE Technology Co., Ltd

Master TRF.....: Dated 2009-01

#### Shenzhen VITE Technology Co., Ltd All rights reserved.

This publication may be reproduced in whole or in part for non-commercial purposes as long as the Shenzhen VITE Technology Co., Ltd is acknowledged as copyright owner and source of the material. Shenzhen VITE Technology Co., Ltd takes no responsibility for and will not assume liability for damages resulting from the reader's interpretation of the reproduced material due to its placement and context.

**Test item description** .....: Transmitter

Operation Frequency.....: 27.145MHz

Modulation mode: .....: AM

Trade Mark .....: N/A

Model/Type reference.....: T3816,

Listed Models .....: T3911, T3912, T3913, T3915, T3916

Difference description.....: Only the Model name is different for market require

Result.....: **Positive**

**FCC ID**.....: **XLDT3816**

**T E S T   R E P O R T**

<b>Test Report No. :</b> VITE0907003R	July 14, 2009 Date of issue
---------------------------------------	--------------------------------

Equipment under Test : Transmitter

Model /Type : T3816

Listed Models : T3911, T3912, T3913, T3915, T3916

Difference description: Only the Model name is different for market require

**Applicant** : Shenzhen Qingsongfa Company Ltd.

Address : Rm504, 22Block, Yueliangwan Garden, Nanshan District, Shenzhen

**Manufacturer** : Shenzhen Qingsongfa Company Ltd.

Address : Rm504, 22Block, Yueliangwan Garden, Nanshan District, Shenzhen

<b>Test Result</b> according to the standards on page 4:	<b>Positive</b>
--	-----------------

The test report merely corresponds to the test sample.

It is not permitted to copy extracts of these test result without the written permission of the test laboratory.

## Contents

<b><u>1.</u></b>	<b><u>TEST STANDARDS .....</u></b>	<b><u>4</u></b>
<b><u>2.</u></b>	<b><u>SUMMARY .....</u></b>	<b><u>5</u></b>
2.1.	General Remarks	5
2.2.	Equipment Under Test	5
2.3.	Short description of the Equipment under Test (EUT)	5
2.4.	EUT operation mode	5
2.5.	EUT configuration	5
2.6.	Related Submittal(s) / Grant (s)	6
2.7.	Modifications	6
2.8.	Test Result Summary	6
<b><u>3.</u></b>	<b><u>TEST ENVIRONMENT.....</u></b>	<b><u>7</u></b>
3.1.	Address of the test laboratory	7
3.2.	Test Facility	7
3.3.	Environmental conditions	7
3.4.	Configuration of Tested System	7
3.5.	Statement of the measurement uncertainty	8
3.6.	Equipments Used during the Test	8
<b><u>4.</u></b>	<b><u>TEST CONDITIONS AND RESULTS.....</u></b>	<b><u>9</u></b>
4.1.	Radiated Emission Test	9
4.2.	Occupied Bandwidth	12
<b><u>5.</u></b>	<b><u>TEST SETUP PHOTOS OF THE EUT .....</u></b>	<b><u>13</u></b>
<b><u>6.</u></b>	<b><u>EXTERNAL AND INTERNAL PHOTOS OF THE EUT .....</u></b>	<b><u>14</u></b>

## 1. TEST STANDARDS

The tests were performed according to following standards:

[FCC Rules Part 15 Subpart C Section 15.227&ANSI C63.4](#)

## 2. SUMMARY

### 2.1. General Remarks

Date of receipt of test sample : July 10, 2009

Testing commenced on : July 10, 2009

Testing concluded on : July 13, 2009

### 2.2. Equipment Under Test

#### Power supply system utilised

Power supply voltage :   o 120V / 60 Hz                      o 115V / 60Hz  
                                  ● 12 V DC                                      o 24 V DC  
                                  o Other (specified in blank below)

Not applicable

### 2.3. Short description of the Equipment under Test (EUT)

Transmitter

For more details, refer to the user's manual of the EUT.

Serial number: Prototype

### 2.4. EUT operation mode

The EUT has been tested under typical operating condition.

### 2.5. EUT configuration

The following peripheral devices and interface cables were connected during the measurement:

o - supplied by the manufacturer

o - supplied by the lab

o Power Cable	Length (m) : /
	Shield : /
	Detachable : /
o Multimeter	Manufacturer : /
	Model No. : /

**2.6. Related Submittal(s) / Grant (s)**

This submittal(s) (test report) is intended for **FCC ID: XLDT3816** filing to comply with the FCC Part 15, Subpart C Rules.

**2.7. Modifications**

No modifications were implemented to meet testing criteria.

**2.8. Test Result Summary**

Test Item	Test Requirement	Standard Paragraph	Result
Radiated Emission (25MHz to 1000MHz)	FCC PART 15	Section 15.227	PASS
Occupied Bandwidth	FCC PART 15	Section 15.215	PASS

### **3. TEST ENVIRONMENT**

#### **3.1. Address of the test laboratory**

Shenzhen Academy of Metrology&Quality Inspection  
Bldg. Metrology&Quality Inspection, Longzhu Road, Nanshan, Shenzhen, Guangdong, P.R. China

There is one 3m semi-anechoic chamber and two line conducted labs for final test. The Test Sites meet the requirements in documents ANSI C63.4 and CISPR 22/EN 55022 requirements

#### **3.2. Test Facility**

The test facility is recognized, certified, or accredited by the following organizations:

##### **IC Registration No.: 4174**

The 3m alternate test site of EMC Laboratory has been registered by Certification and Engineer Bureau of Industry Canada for the performance of with Registration No.: IC4174.

##### **FCC-Registration No.: 274801**

The EMC Laboratory has been registered and fully described in a report filed with the (FCC) Federal Communications Commission. The acceptance letter from the FCC is maintained in our files. Registration No.:274801.

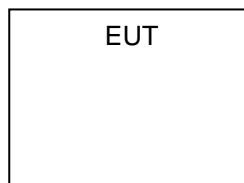
#### **3.3. Environmental conditions**

During the measurement the environmental conditions were within the listed ranges:

Temperature:	<u>15-35 ° C</u>
Humidity:	<u>30-60 %</u>
Atmospheric pressure:	<u>950-1050mbar</u>

#### **3.4. Configuration of Tested System**

**Fig. 2-1 Configuration of Tested System**



**Table 2-1 Equipment Used in Tested System**

### 3.5. Statement of the measurement uncertainty

The data and results referenced in this document are true and accurate. The reader is cautioned that there may be errors within the calibration limits of the equipment and facilities. The measurement uncertainty was calculated for all measurements listed in this test report acc. to CISPR 16 - 4 „Specification for radio disturbance and immunity measuring apparatus and methods – Part 4: Uncertainty in EMC Measurements“ and is documented in the Shenzhen Academy of Metrology&Qualigy Inspection EMC Laboratory quality system acc. to DIN EN ISO/IEC 17025. Furthermore, component and process variability of devices similar to that tested may result in additional deviation. The manufacturer has the sole responsibility of continued compliance of the device.

Hereafter the best measurement capability for Shenzhen Academy of Metrology&Qualigy Inspection EMC Laboratory is reported:

Test	Range	Measurement Uncertainty	Notes
Radiated Emission	30~1000MHz	4.10dB	(1)
Radiated Emission	1~12.75GHz	4.24dB	(1)
Conducted Disturbance	0.15~30MHz	3.24dB	(1)

(1) This uncertainty represents an expanded uncertainty expressed at approximately the 95% confidence level using a coverage factor of k=2.

### 3.6. Equipments Used during the Test

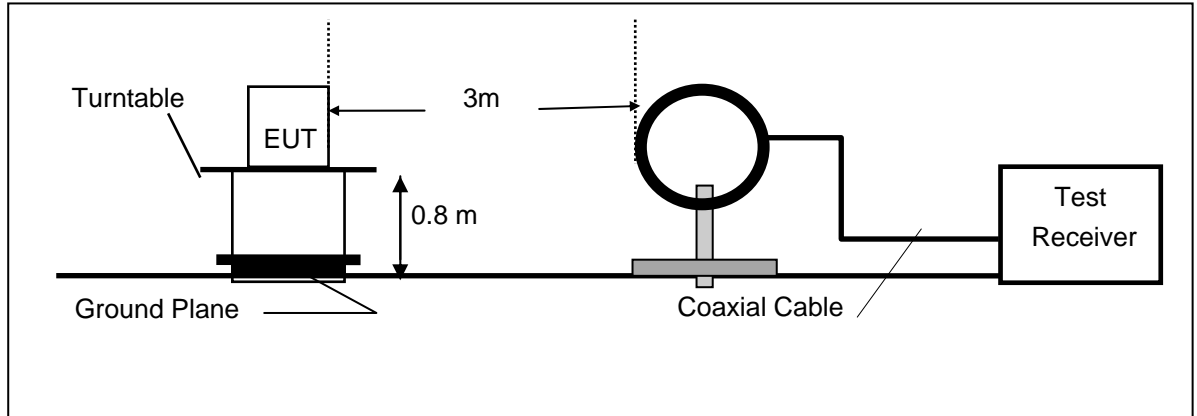
Item	Test Equipment	Manufacturer	Model No.	Serial No.	Last Cal.
1	EMI Test Receiver	ROHDE & SCHWARZ	ESCS30	100307	2009/02
2	EMI Test Receiver	ROHDE & SCHWARZ	ESI26	838786/013	2009/02
3	LOOP Antenna	Schwarzbeck	FMZB1516	113	2009/02
4	Bilog Antenna	Schwarzbeck	VULB9163	9163-194	2009/02
5	Bilog Antenna	Chase	CBL6112B	2591	2009/02
6	Horn Antenna	ROHDE & SCHWARZ	HF906	100013	2009/02
7	Spectrum Analyzer	Anritsu	MS2651B	6200238856	2009/02
8	Pre-Amplifier	Agilent	8447D	2944A10619	2009/02

## 4. TEST CONDITIONS AND RESULTS

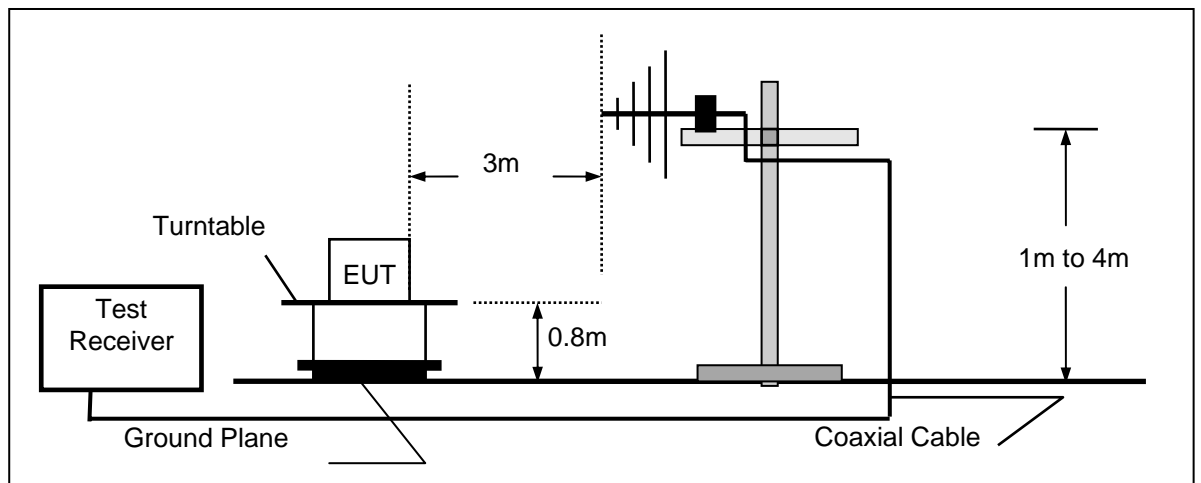
### 4.1. Radiated Emission Test

#### TEST CONFIGURATION

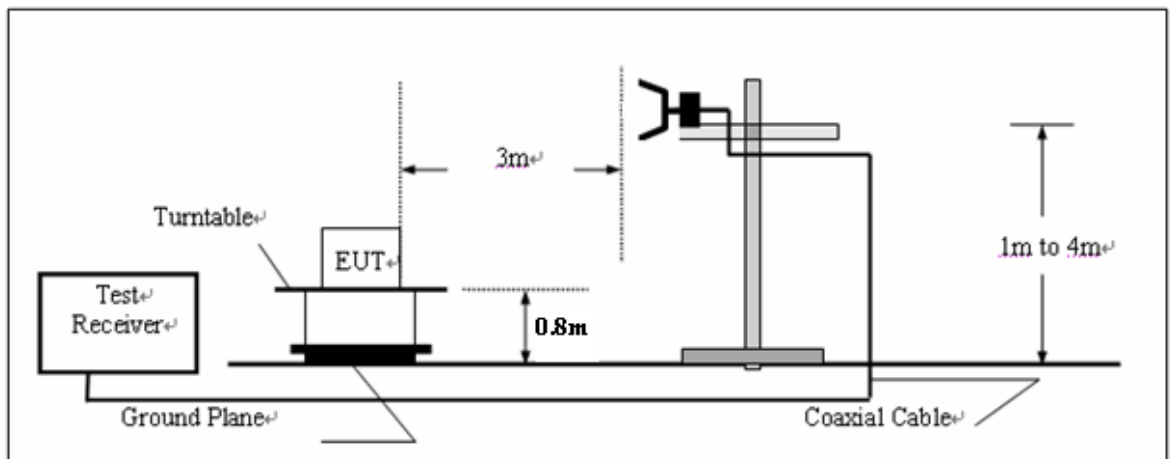
(A) Radiated Emission Test Set-Up, Frequency Below 30MHz



(B) Radiated Emission Test Set-Up, Frequency below 1000MHz



(C) Radiated Emission Test Set-Up, Frequency above 1000MHz



**TEST PROCEDURE**

- 1 The EUT was placed on a turn table which is 0.8m above ground plane.
- 2 Maximum procedure was performed by raising the receiving antenna from 1m to 4m and rotating the turn table from 0° to 360° to acquire the highest emissions from EUT
3. And also, each emission was to be maximized by changing the polarization of receiving antenna both horizontal and vertical.
4. Repeat above procedures until all frequency measurements have been completed.

**Field Strength Calculation**

The field strength is calculated by adding the Antenna Factor and Cable Factor and subtracting the Amplifier Gain and Duty Cycle Correction Factor(if any) from the measured reading. The basic equation with a sample calculation is as follows:

$$FS = RA + AF + CL - AG$$

Where FS = Field Strength	CL = Cable Attenuation Factor (Cable Loss)
RA = Reading Amplitude	AG = Amplifier Gain
AF = Antenna Factor	

**RADIATION LIMIT**

For unintentional device, according to § 15.109(a), except for Class A digital devices, the field strength of radiated emissions from unintentional radiators at a distance of 3 meters shall not exceed the following values:

Frequency (MHz)	Distance (Meters)	Radiated (dBµV/m)	Radiated (µV/m)
30-88	3	40.0	100
88-216	3	43.5	150
216-960	3	46.0	200
Above 960	3	54.0	500

For intentional device, according to § 15.209(a), the general requirement of field strength of radiated emissions from intentional radiators at a distance of 3 meters shall not exceed the above table.

**Test Procedure**

1. The EUT is placed on a turntable, which is 0.8m above ground plane.
2. The turntable shall be rotated for 360 degrees to determine the position of maximum emission level.
3. EUT is set 3m away from the receiving antenna, which is varied from 1m to 4m to find out the highest emissions.
4. Maximum procedure was performed on the six highest emissions to ensure EUT compliance.
5. And also, each emission was to be maximized by changing the polarization of receiving antenna both horizontal and vertical.
6. Repeat above procedures until the measurements for all frequencies are complete.

Note:

Three axes are chosen for pretest, the Z axis is the worst mode for final test.

**Radiation Test Result**

Freq. (MHz)	Ant.Pol. H/V	DetectorMode (PK/AV)	Reading (dBuV)	Ant./CL/ Amp. CF(dB)	Actual FS (dBuV/m)	Limit3m (dBuV/m)	Safe Margin (dB)	Note
27.145	Loop	Peak	35.33	21.20	56.53	80.00	-23.47	F
54.290	V	Peak	17.40	8.30	25.70	40.00	-14.30	H
81.435	V	Peak	12.90	11.40	24.30	40.00	-15.70	H
108.580	V	Peak	16.47	11.63	28.10	43.50	-15.40	H
135.725	V	Peak	9.46	10.14	19.60	43.50	-23.90	H
162.870	V	Peak	11.40	10.70	22.10	43.50	-21.40	H
190.015	V	Peak	14.20	10.70	24.90	43.50	-18.60	H
217.160	V	Peak	14.20	11.10	25.30	46.00	-20.70	H
Others			-					

Freq. (MHz)	Ant.Pol. H/V	DetectorMode (PK/AV)	Reading (dBuV)	Ant./CL/ Amp. CF(dB)	Actual FS (dBuV/m)	Limit3m (dBuV/m)	Safe Margin (dB)	Note
27.145	Loop	Peak	35.33	21.20	56.53	80.00	-23.47	F
54.290	H	Peak	14.10	8.30	22.40	40.00	-17.60	H
81.435	H	Peak	10.30	11.40	21.70	40.00	-18.30	H
108.580	H	Peak	13.67	11.63	25.30	43.50	-18.20	H
135.725	H	Peak	9.96	10.14	20.10	43.50	-23.40	H
162.870	H	Peak	7.00	10.70	17.70	43.50	-25.80	H
190.015	H	Peak	11.40	10.70	22.10	43.50	-21.40	H
217.160	H	Peak	13.20	11.10	24.30	46.00	-21.70	H
Others			-					

## Remark:

- (1) Measuring frequencies from 25 MHz to the 1GHz.
- (2) "F" denotes fundamental frequency; "H" denotes spurious frequency. "E" denotes band edge frequency.
- (3) \* denotes emission frequency which appearing within the Restricted Bands specified in provision of 15.205, then the general radiated emission limits in 15.209 apply.
- (4) Datas of measurement within this frequency range shown " - " in the table above means the reading of emissions are attenuated more than 20dB below the permissible limits or the field strength is too small to be measured.
- (5) The IF bandwidth of EMI Test Receiver between 25MHz to 1GHz was 120KHz.

## 4.2. Occupied Bandwidth

### Measurement Procedure

1. The EUT was placed on a turn table which is 0.8m above ground plane.
2. Set EUT as normal operation
3. Based on FCC Part15 C Section 15.227: Operation within the band 26.96 – 27.28 MHz, RBW= 10KHz, VBW= 30KHz.
4. The useful radiated emission from the EUT was detected by the spectrum analyser with peak detector.

### Test SET-UP (Block Diagram of Configuration)

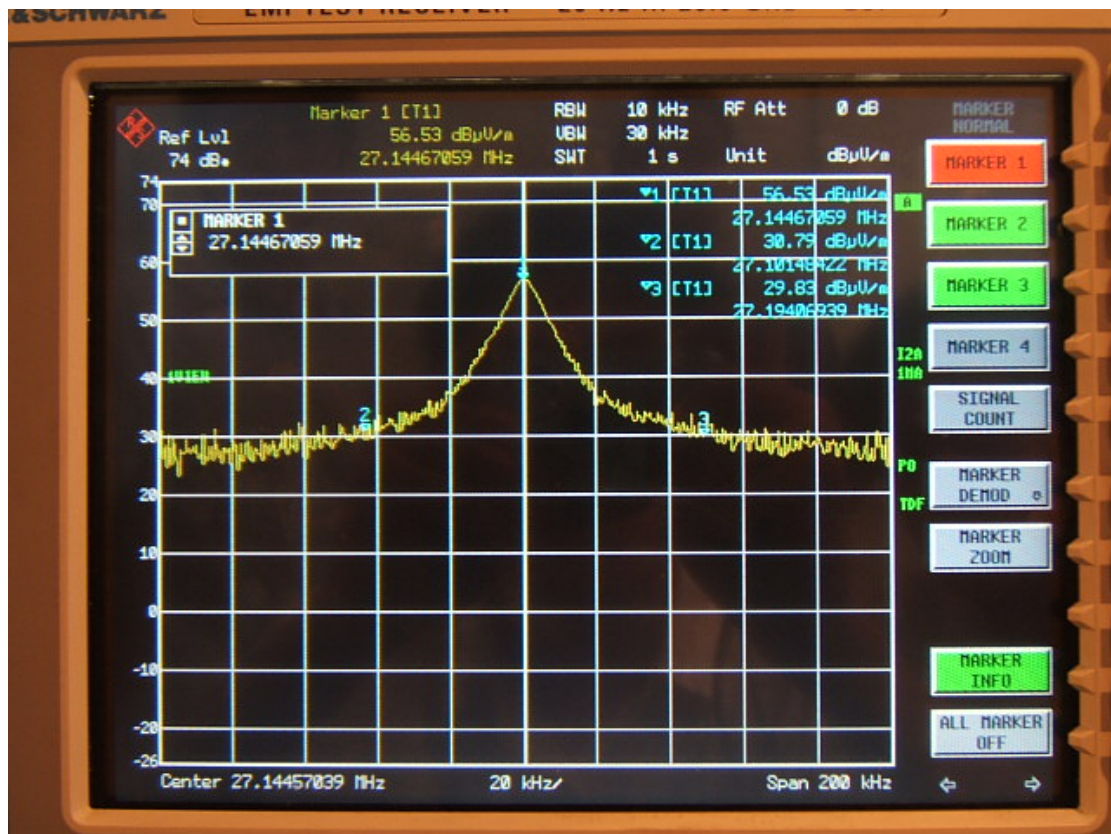
Same as Radiated Emission Measurement.

### Measurement Equipment Used:

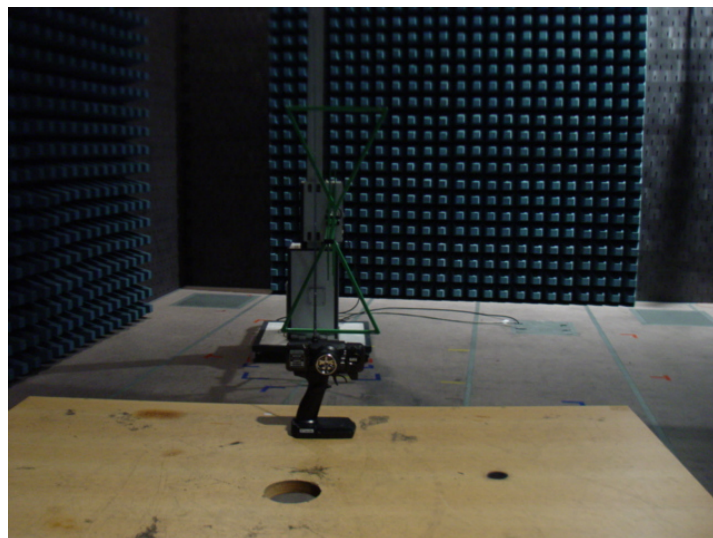
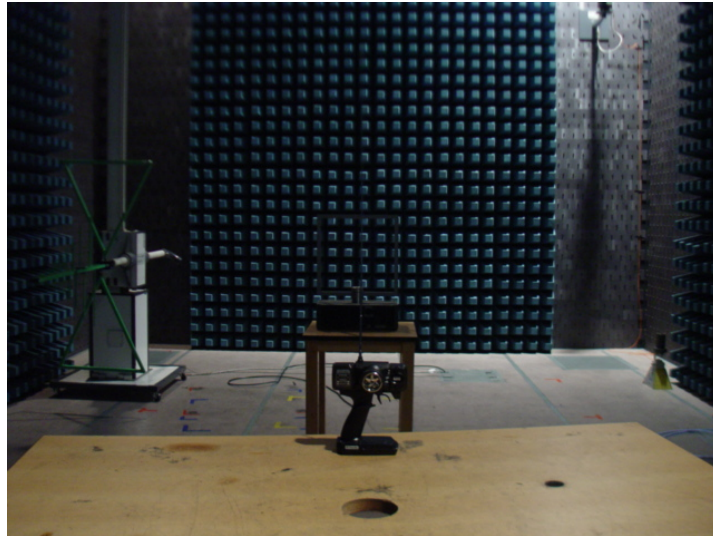
Same as Radiated Emission Measurement.

### Measurement Results:

The graph as below, represents the emissions take for this device.



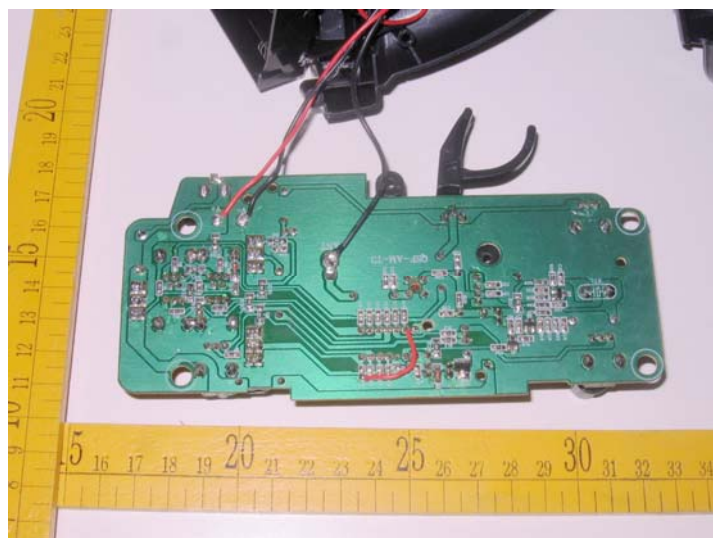
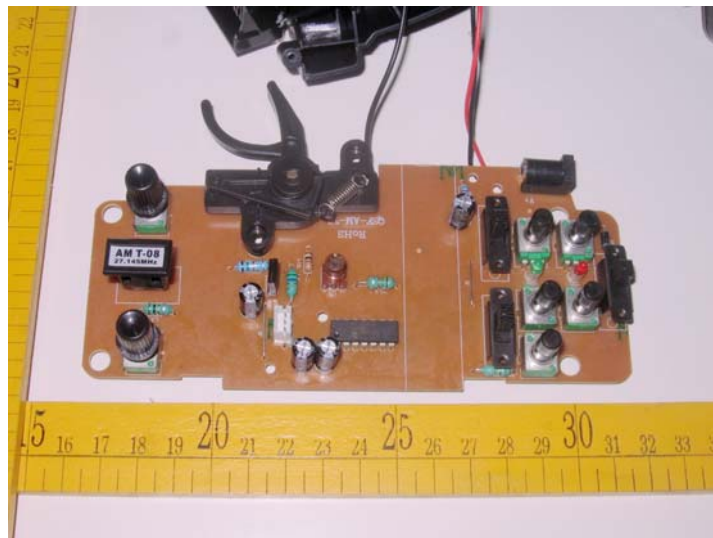
## **5. Test Setup Photos of the EUT**



## 6. External and Internal Photos of the EUT

### External Photos



Internal Photos

.....End of Report.....