

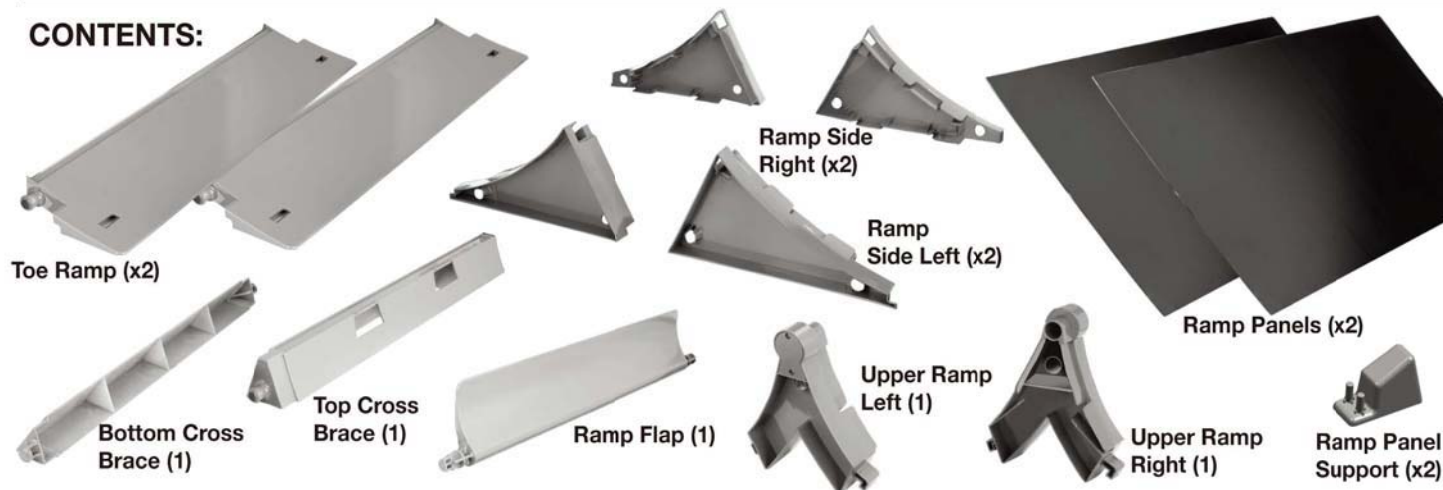
Ramp Assembly

Please read all instructions prior to operation.

For easy video
instructions go to
MAXTECHTOYS.COM



CONTENTS:



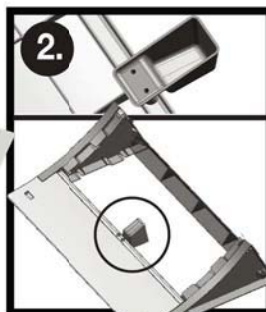
TIPS FOR OPERATION:

1. For turning the bike in a tight radius decrease your speed. When the bike is running full speed and in turbo mode the turning radius is very large like a real bike. Slow down to make tight turns!
2. For executing the back flip - experiment with different speeds to complete the jump. Use the rev and go method by holding your in line with the jump and revving up the motor to full speed then release the bike aiming straight for the ramp. If you over jump the ramp or cant complete the backflip adjust your distance from the ramp and your speed.
3. Use ordinary packing tape to secure your ramps together if needed.
4. For easy video instructions go to **MAXTECHTOYS.COM**

TO ASSEMBLE FOR BACKFLIP STUNT:



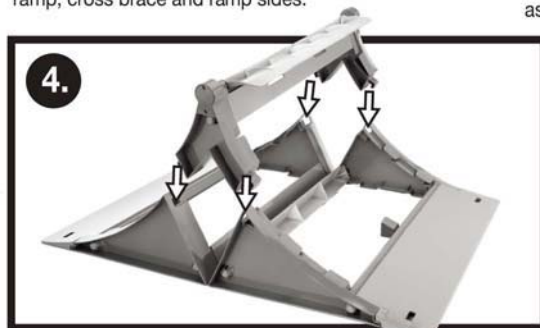
1. Attach 1 toe ramp and 1 bottom cross brace between left and right ramp sides. Pieces should snap together. Note to use smooth side up of toe ramp pieces for this version of ramp. Repeat this operation with the other toe ramp, cross brace and ramp sides.



2. Hand press fit ramp panel support into each toe ramp as shown.



3. Next, snap top cross brace and ramp flap in between left and right upper ramp pieces.



4. Face the ramps toward each other and attach the assembled upper ramp.



5. Now, slide the ramp panels in the slots between the tabs. Make sure panels go all the way down to the top of the toe ramp. This will be the face of the ramp. Repeat this step on the other side of the ramp.

TO ASSEMBLE FOR LONG JUMP:



1. Attach 1 toe ramp and 1 bottom cross brace between left and right ramp sides. Pieces should snap together. Note to use ribbed side up of toe ramp pieces for this version of ramp. Repeat this operation with the other toe ramp, cross brace and ramp sides.



**BE SURE TO
INSTALL RAMP PANELS
ON CORRECT SIDE
OF RAMP SIDES**

2. With ribs of toe ramps side up, slide ramp panels in the slot between the tabs. Make sure panels go all the way down to the top of the toe ramp. This will be the ramp face. Repeat this step on the other side of the ramp. Use one ramp to launch and the other as a landing ramp.



Max Tech™ is a trademark of the Maya Group
The Maya Group, Inc.
19823 Hamilton Ave., Torrance, CA 90502
www.maxtecht toys.com

User's Guide

Please read all instructions prior to operation.

Thank you for choosing our product. If you experience any difficulty with this product, do not return it to the store. Instead, please call us Toll Free at 1-800-843-6292. We'll be happy to assist you.

Battery Installation (Vehicle):



NOTE: Battery pack must be fully charged for 4 hours before initial use, and after each use.

Battery Installation (Transmitter):



Note: Use 9V battery.

Parents recommending that the adaptor be periodically examined for conditions that may result in the risk of fire, electric shock, or injury to persons and that, in an event such conditions, the adaptor should not be used until properly repaired.

Antenna Installation

Insert threaded end of antenna into small hole on top of controller. Turn clockwise to secure into place.

Power Switch:



Note: Be sure to switch your vehicle and transmitter off when not in use.

INPUT: 120V AC, 60HZ 35MA, OUTPUT: 9.6V DC, 250MA (Adaptor)

CAUTION ELECTRIC TOY

-Not recommended for children under 6 years of age. As with all electric products, precautions should be observed during handling and use to prevent electric shock.

Warning: Changes or modifications to this unit not expressly approved by the party responsible for compliance could void the user's authority to operate the equipment.

Transmitter Controls:

Forward/Reverse



Left/Right



Note: Approximate maximum range of operation between vehicle and transmitter is 100 feet. Up to 25 minutes constant running time on a full charge.

Turbo Boost:



Push Turbo Boost button on back of transmitter when added speed is needed for ramp jumps and other stunts.

Precautions:

- Do not leave vehicle or transmitter in direct sunlight for extended periods of time.
- Do not drive vehicle on sand or thick carpet.
- Do not drive vehicle on public roadways.
- Do not drive vehicle into walls or obstacles.
- Do not drive vehicle in water or on wet surfaces.
- Do not drive vehicle around pets.
- Do not pick up moving vehicle.
- Keep hair and loose clothing away from tires and wheels when power switch is turned ON.
- Remove batteries from vehicle when not in use.
- Do not attempt to recharge non-rechargeable batteries.
- Do not charge batteries while installed in the vehicle.
- Recharging batteries should be done by an adult.
- Supply terminals should not be short circuited.

Troubleshooting:

- | | |
|------------------|-----------------------------------------------------------------------------------------------------------------------------------------------------------------------------------|
| Problem: | Vehicle moves slowly or not at all. |
| Solution: | Be sure power switch is switched to "on".
Be sure batteries are installed correctly in both vehicle and transmitter.
Be sure battery contacts are clean and free from rust. |
| Problem: | Vehicle movement is erratic or range is reduced. |
| Solution: | Operate vehicle in an area with less interference.
Operate vehicle away from other vehicles using the same frequency. |

Care and Maintenance:

- Brush off dirt and/or debris after each use.
- Do not use chemicals to clean vehicle or transmitter. Instead, wipe gently with a clean damp cloth.
- Do not submerge the toy in water. Doing this will damage electronic components.

FCC Caution: The manufacturer is not responsible for radio interference caused by unauthorized frequency modification to this equipment. Such modifications could void the user's authority to operate the equipment.

Note: This equipment has been tested and found to comply with the limits for a class B digital device, pursuant to Part 15d to provide reasonable protection against harmful interference in a residential installation. This equipment generates, uses and can radiate radio frequency energy and, if not installed and used in accordance with the instructions. However, there is no guarantee that interference will not occur in a particular installation. If this equipment does cause harmful interference to radio or television reception, which can be determined by turning the equipment off and on, the user is encouraged to try to correct the interference by one or more of the following measures:

- reorient or relocate the receiving antenna.
- Increase the distance between the equipment and the receiver.
- Connect the equipment into an outlet on a different circuit from that to which the receiver is connected.
- Consult the dealer or an experienced radio/television technician for help.