

V120 Assets GPS Tracker



User Manual

V0.93

ADVANCE VISION ELECTRONICS CO., LTD.
6F., No.,199, Lide St., Zhonghe Dist., New Taipei City 23556, Taiwan, R.O.C
TEL: +886 2 8228-2088 FAX: +886 2 8228-1200
www.avecl.com info@avecl.com

TABLE OF CONTENTS

1. Warning.....	3
2. Features.....	4
3. Specification.....	5
4. Introduction.....	6
5. Battery Charging.....	7
6. SIM Card Installation.....	8
7. Operating.....	10

1. Warning:



USE RESPONSIBLY. READ ALL INSTRUCTIONS AND SAFETY INFORMATION BEFORE USE TO AVOID INJURY.

Advance Vision Electronics Co., Ltd. will not accept any responsibility whatsoever for accidents resulting from failure to observe common sense precautions. Your personal judgment, traffic regulations, and common sense must always take precedence over any directions produced by GPS tracker or the mapping software of backend.

WARNING:

Be certain GPS tracker is secure for position of installation and does not interfere driving safety.

It is your responsibility as the vehicle operator to securely place the GPS unit and antenna so that they will not interfere with driving and prevent operations of any safety device, i.e. vehicle's airbag. Do not mount the devices in a place where the driver or passengers may receive injury during vehicle operation or collision. For your safety, take care to route all cables away from shifters, pedals, accessory controls and mechanisms.

2. Features:

- GSM/SMS/GPRS Communication.
- Quad-Band GSM (850/900/1800/1900MHz) / GPRS Class10.
- Support Quick GPS Fix (AGPS).
- Real-Time tracking.
- Buffer Storage for recording 5,000 data positions.
- Geofence Function.
- Impact Detection / Movement / Low Battery / Over Speed Alert.
- Firmware Upgrade over the Air (OTA).
- Configuration via SMS or TCP/IP (GPRS).
- Long Battery Life.
- Quick Installation (Strong Magnet).
- IP67 Water-Resistance.



Goods



Investigate

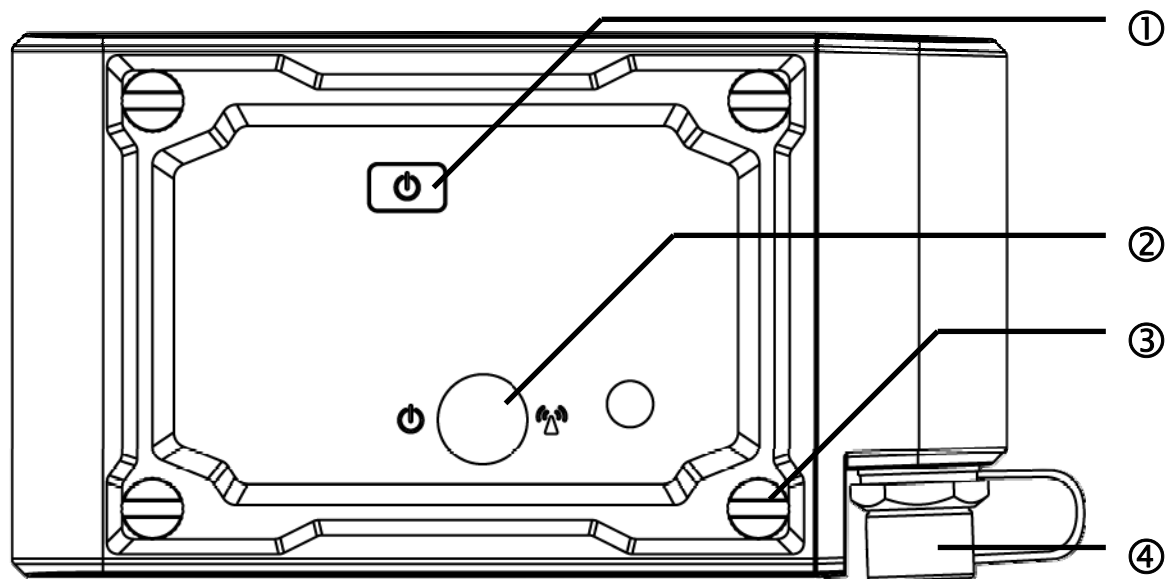


Assets

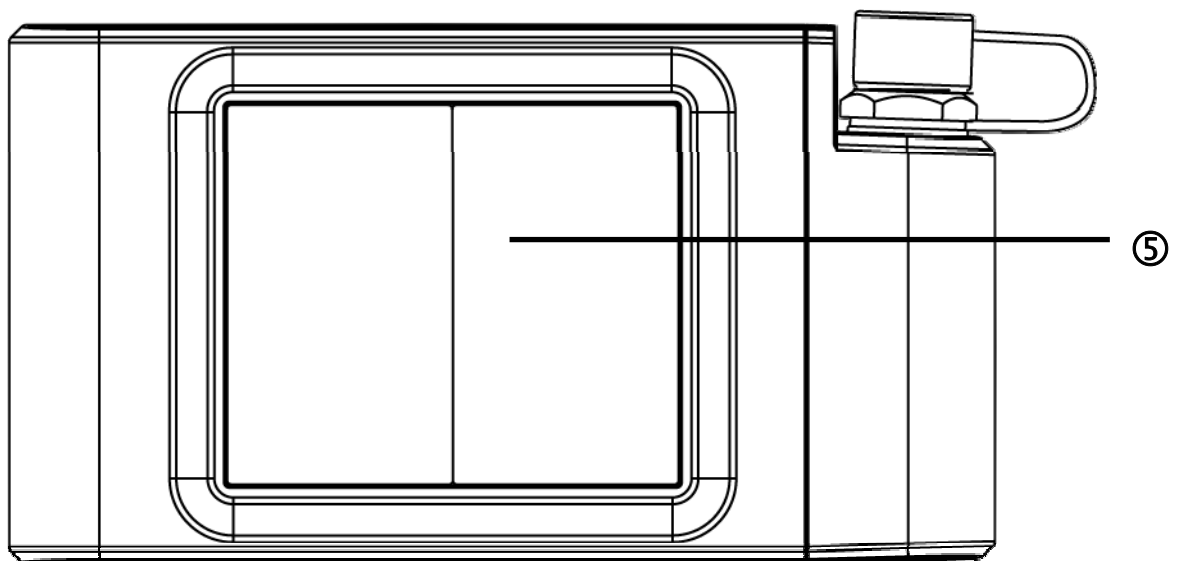
3. Specification:

GSM Frequency	GSM 850/900/1800/1900 system
GPS Channels	50-channel acquisition 14-channel tracking
GPS Start Time	Hot Start: 1 sec, Warm Start: 32 sec, Cold Start: 32 sec
Position Accuracy	Position 2.5m CEP
Default Datum	WGS84
Operating Temperature	-20°C~ 55°C
Humidity	5%~ 95% Non-condensing
Dimension	131mm x 71.5 mm x 36.5mm
Weight	420g
Battery	Rechargeable 12000 mAh Li-ion battery (3.7V)
External Power Source	12V 、24V DC
Power Consumption	Operating(GPS ON, GSM ON) : 110mAh Power Save (GPS OFF, GSM ON): 10mAh Sleep (GPS OFF, GSM OFF): 2mAh
LED	Power / GSM (Orange/Green) GPS (Blue)
Water-Resistance	IP67
Certification	CE, FCC, PTCRB, NCC, BSMI
Accessories	AC Adaptor
	Option: Power Cable (Support 12V / 24V DC Input)

4. Introduction:



Front



Back

- ① Power Key
- ② LED
- ③ Screw
- ④ DC Connector
- ⑤ Magnet

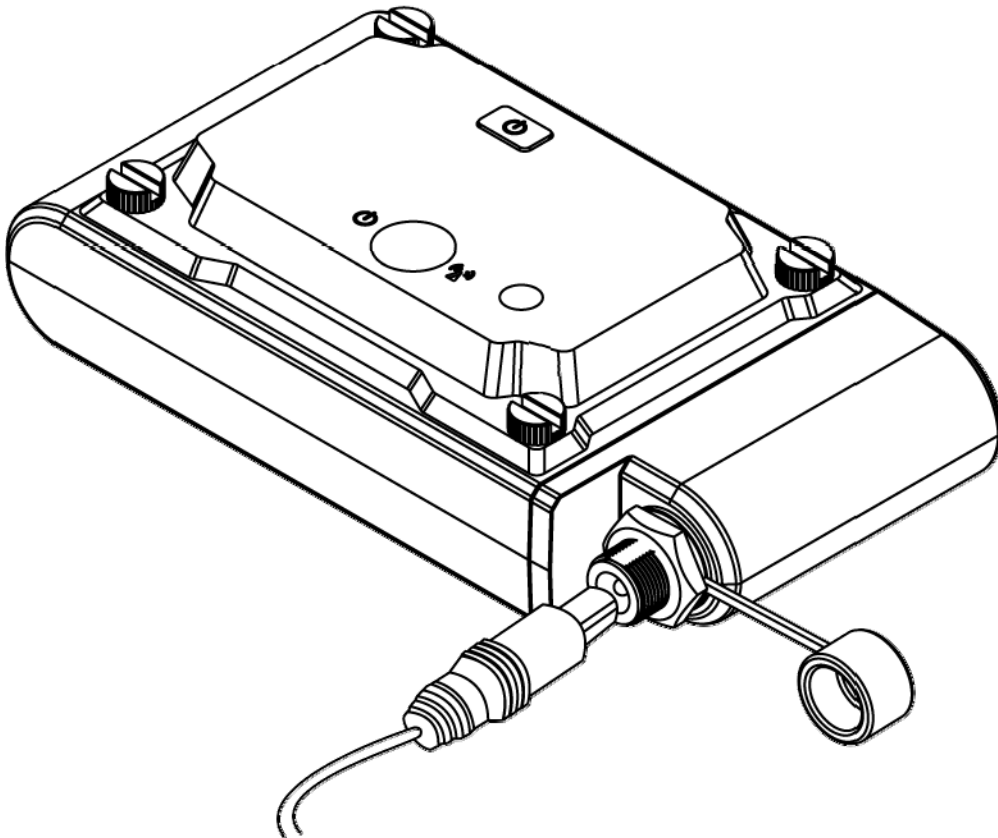
5. Battery Charging:

First time to use:

Please make sure that rechargeable battery is completely charged. (to charge over 12 hours)

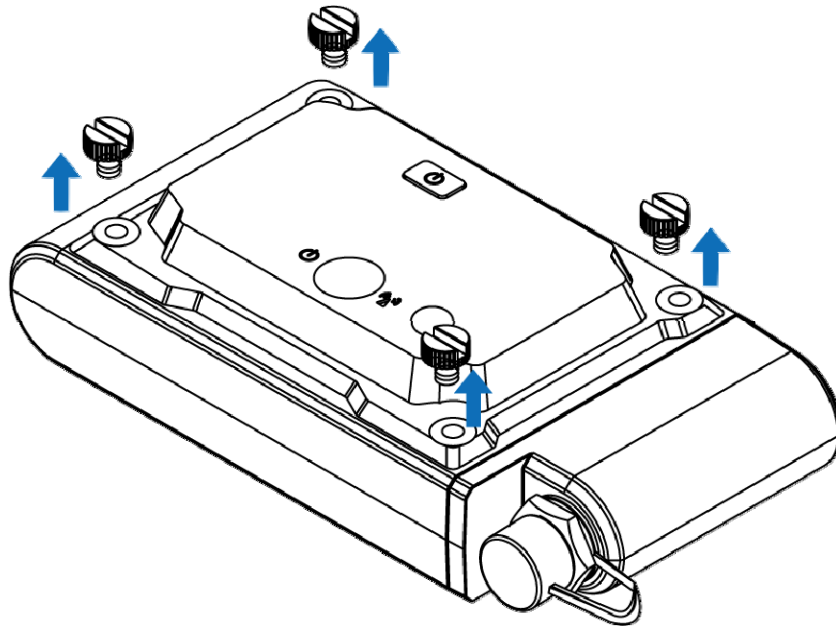
Charging:

The orange LED will start flashing when the device is low battery, at this time please put the charger into the device and then the orange LED lights will become constant light, to be fully charged after orange LED will extinguish and return to the green LED flashing.

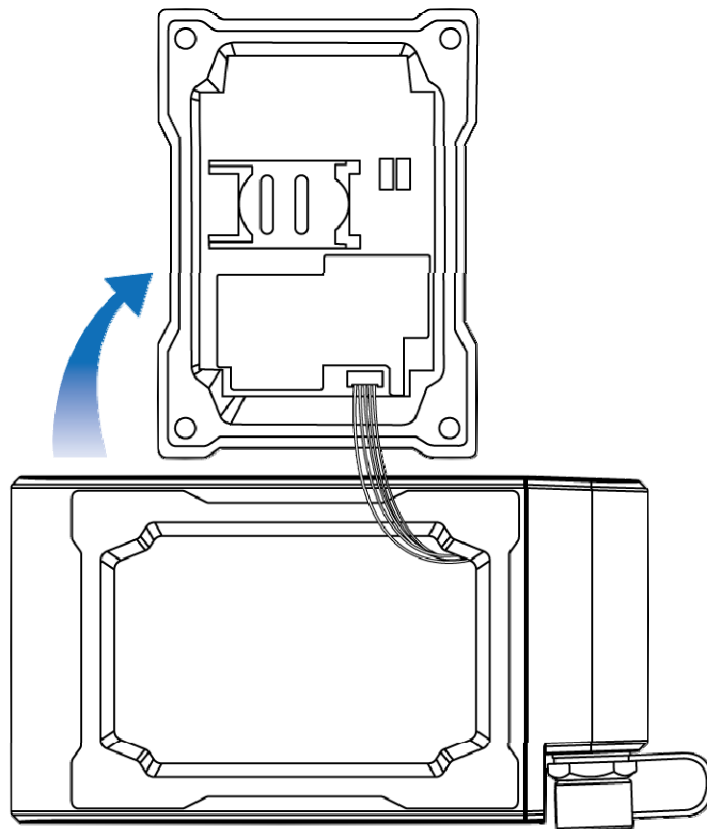


6. SIM Card Installation:

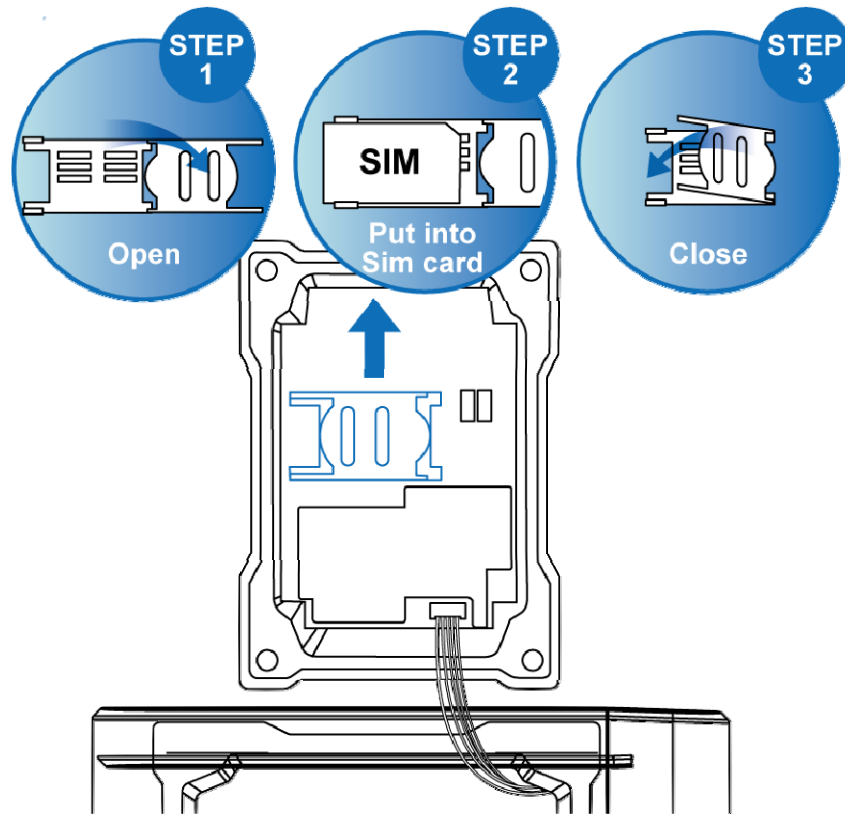
Open the screw



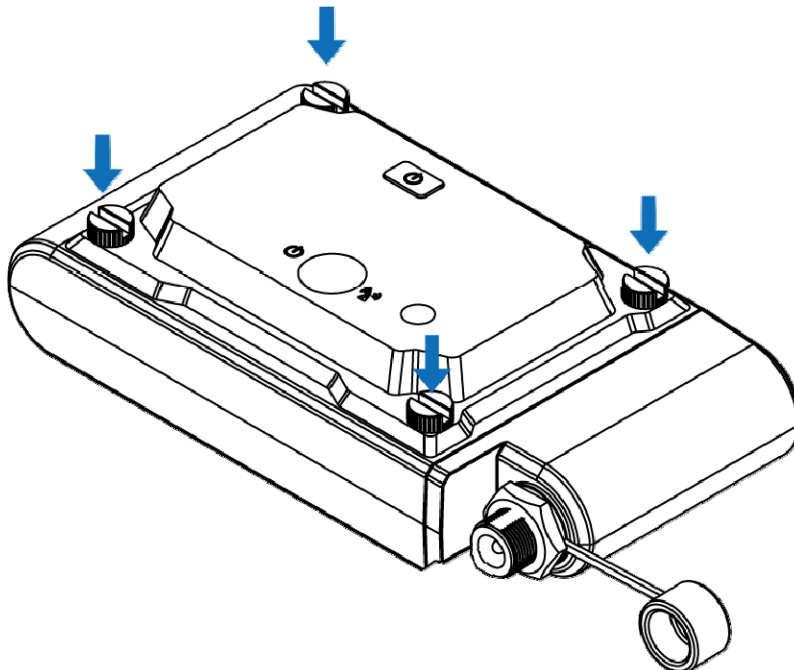
Open the top cover



Install the SIM card



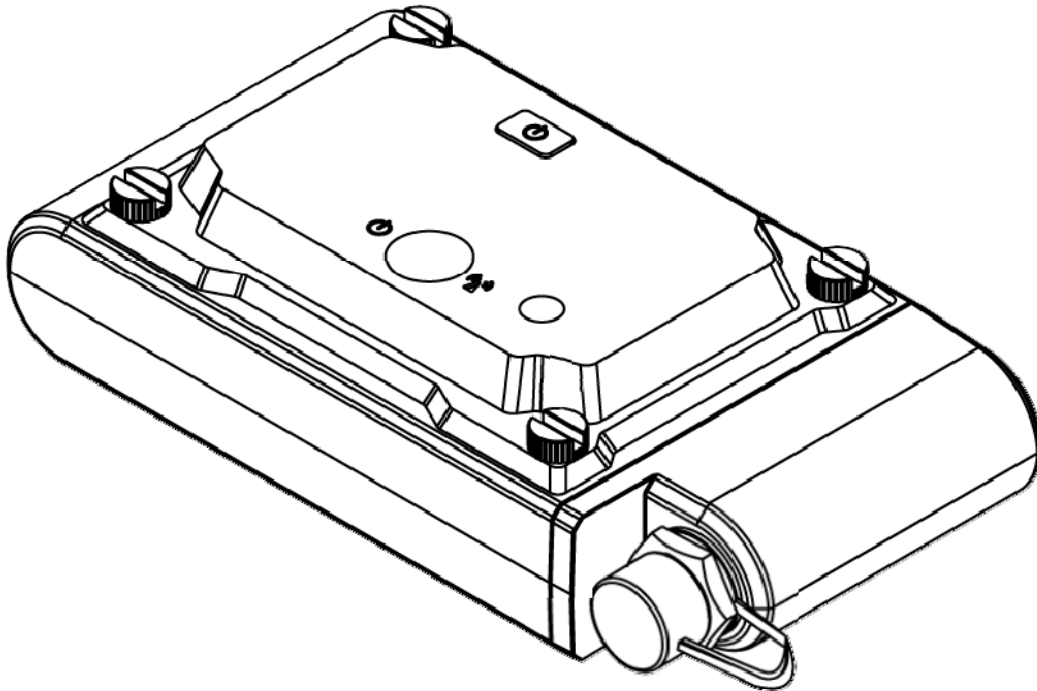
Close the top cover and tighten the screws



7. Operating

Turn on: Hold the power key until the LED is lit up

Turn off: Hold the power key until the LED is light off



LED status:

LED	Constant Light	Blink Quickly (Once per second)	Blink Slowly (Once every 3 seconds)
Green	x	1. No SIM card inserted 2. Device is searching GSM network 3. SIM card is registering to GSM network	SIM card is registered to GSM network
Orange	Device is being charged	1. Low battery and no SIM card inserted 2. Low battery and device is searching GSM network 3. Low battery and SIM card is registering to GSM network	Low battery and SIM card is registered to GSM network
Blue	x	Device does not get GPS fix	GPS fixed

Federal Communications Commission (FCC) Statement

15.21

You are cautioned that changes or modifications not expressly approved by the part responsible for compliance could void the user's authority to operate the equipment.

15.105(b)

This equipment has been tested and found to comply with the limits for a Class B digital device, pursuant to part 15 of the FCC rules. These limits are designed to provide reasonable protection against harmful interference in a residential installation. This equipment generates, uses and can radiate radio frequency energy and, if not installed and used in accordance with the instructions, may cause harmful interference to radio communications. However, there is no guarantee that interference will not occur in a particular installation. If this equipment does cause harmful interference to radio or television reception, which can be determined by turning the equipment off and on, the user is encouraged to try to correct the interference by one or more of the following measures:

- Reorient or relocate the receiving antenna.**
- Increase the separation between the equipment and receiver.**
- Connect the equipment into an outlet on a circuit different from that to which the receiver is connected.**
- Consult the dealer or an experienced radio/TV technician for help.**

This device complies with Part 15 of the FCC Rules. Operation is subject to the following two conditions:

- 1) this device may not cause harmful interference and**
- 2) this device must accept any interference received, including interference that may cause undesired operation of the device.**

FCC RF Radiation Exposure Statement:

- 1) This Transmitter must not be co-located or operating in conjunction with any other antenna or transmitter.**
- 2) This equipment complies with FCC RF radiation exposure limits set forth for an uncontrolled environment. This equipment should be installed and operated with a minimum distance of 20 centimeters between the radiator and your body.**

CE Marking

This device has been tested to and conforms to the regulatory requirements of the European Union and has attained CE Marking. The CE Mark is a conformity marking consisting of the letters “CE”. The CE Mark applies to products regulated by certain European health, safety and environmental protection legislation. The CE Mark is obligatory for products it applies to: the manufacturer affixes the marking in order to be allowed to sell his product in the European market.

This product conforms to the essential requirements of the R&TTE directive 1999/5/EC in order to attain CE Marking. A notified body has determined that this device has properly demonstrated that the requirements of the directive have been met and has issued a favorable certificate of expert opinion. As such the device will bear the notified body number 0560 after the CE mark.

The CE Marking is not a quality mark. Foremost, it refers to the safety rather than to the quality of a product. Secondly, CE Marking is mandatory for the product it applies to, whereas most quality markings are voluntary.

Marking: The product shall bear the CE mark, the notified body number(s) as depicted to the right. CE0560.