

Annex B

1-8822/19-01-01_AnnexB

Internal photos of the Equipment Under Test

This addendum is electronically signed and valid without handwritten signature.
For verification of the electronic signatures, the public keys can be requested at the testing laboratory.

Document authorized:

Michael Dorongovski
Lab Manager
Radio Communications

Photos



Photo 1: 1473157 device opened

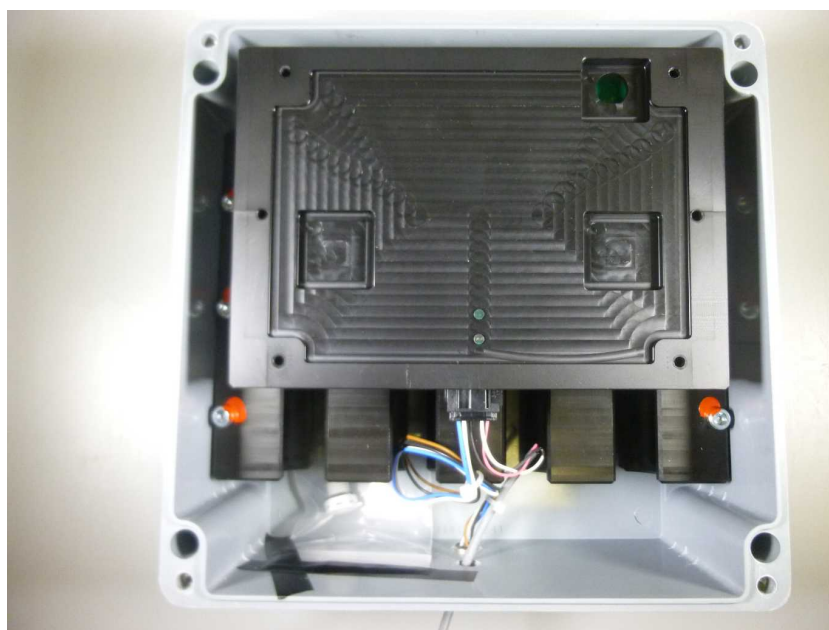


Photo 2: 1473157 device opened

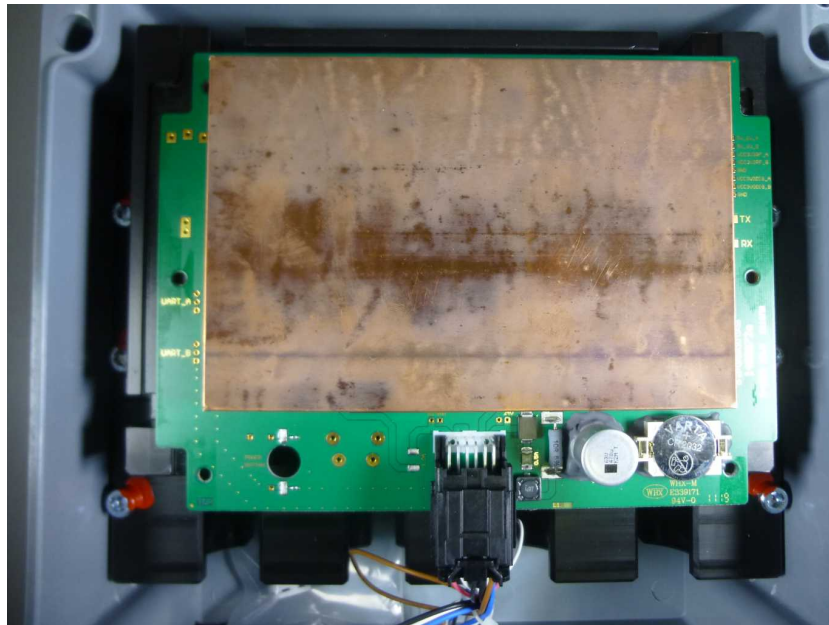


Photo 3: 1473157 device PCB front side view with shielding

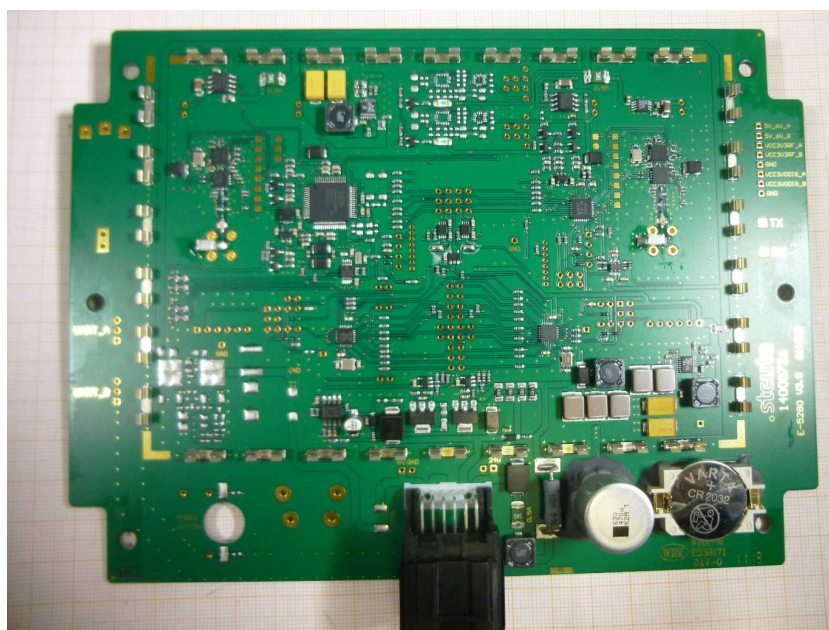


Photo 4: 1473157 device PCB front side view without shielding

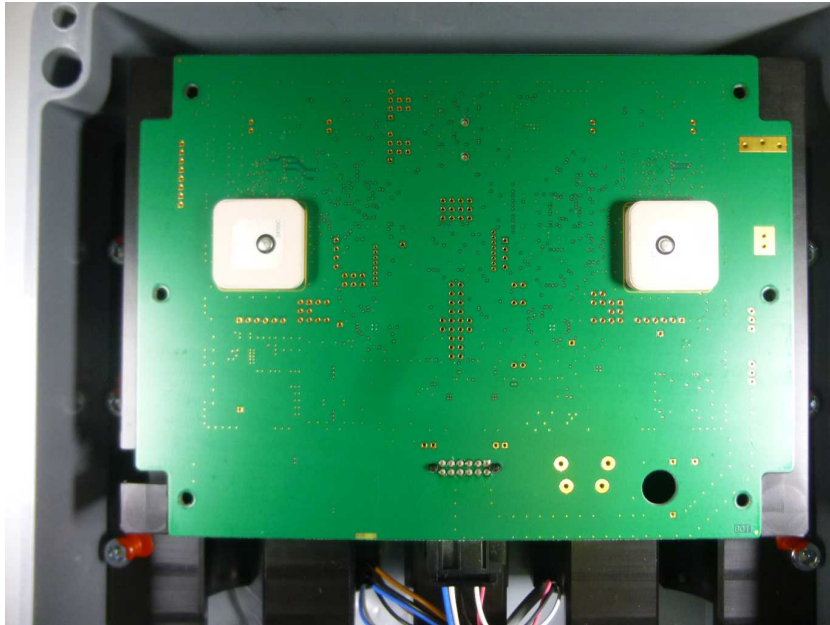


Photo 5: 1473157 device PCB back side view

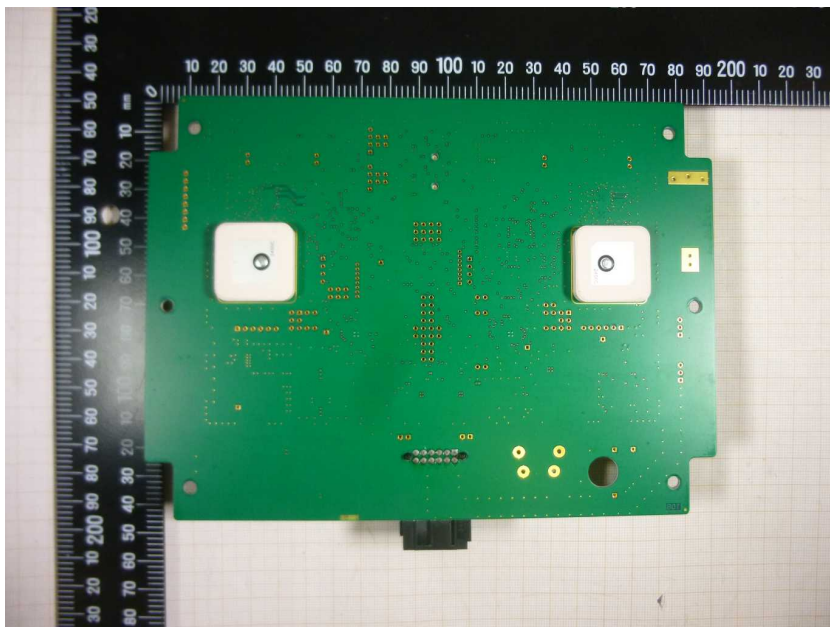


Photo 6: 1473157 device PCB back side view



Photo 7: 1473157 device PCB back side view, antenna



Photo 8: Non-RF parts of both hardware versions

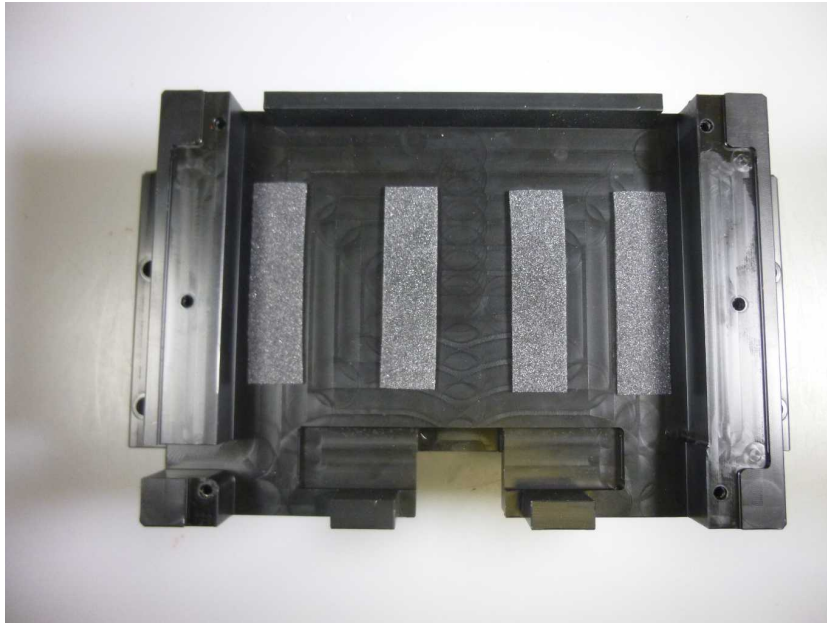


Photo 9: Non-RF parts of both hardware versions



Photo 10: Non-RF parts of both hardware versions



Photo 11: Non-RF parts of both hardware versions

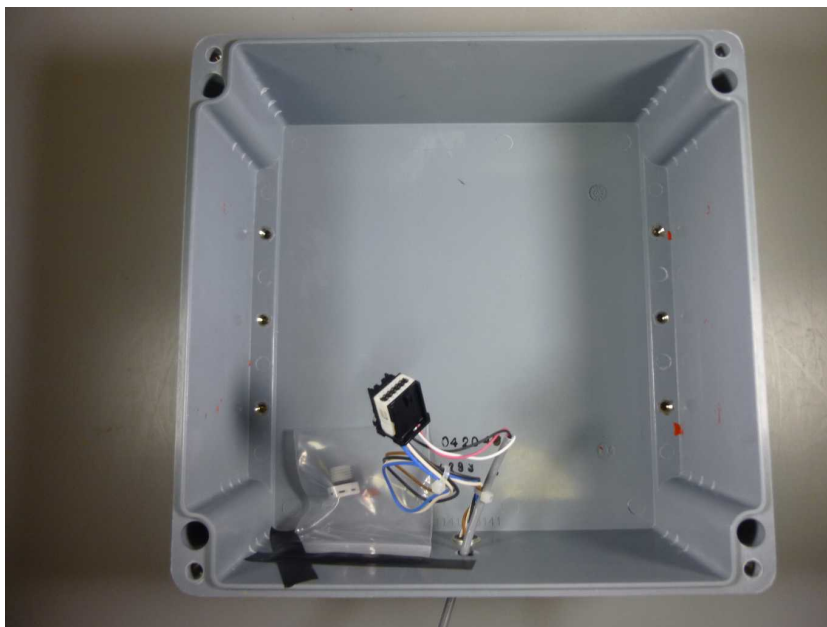


Photo 12: 1473157 device back cover



Photo 13: 1471759 device

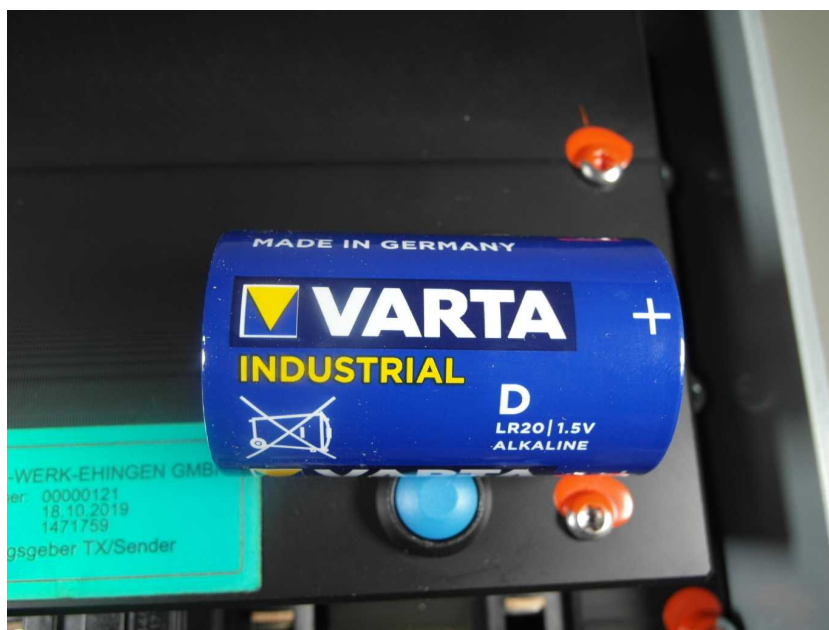


Photo 14: 1471759 device battery



Photo 15: 1471759 device opened



Photo 16: 1471759 device opened

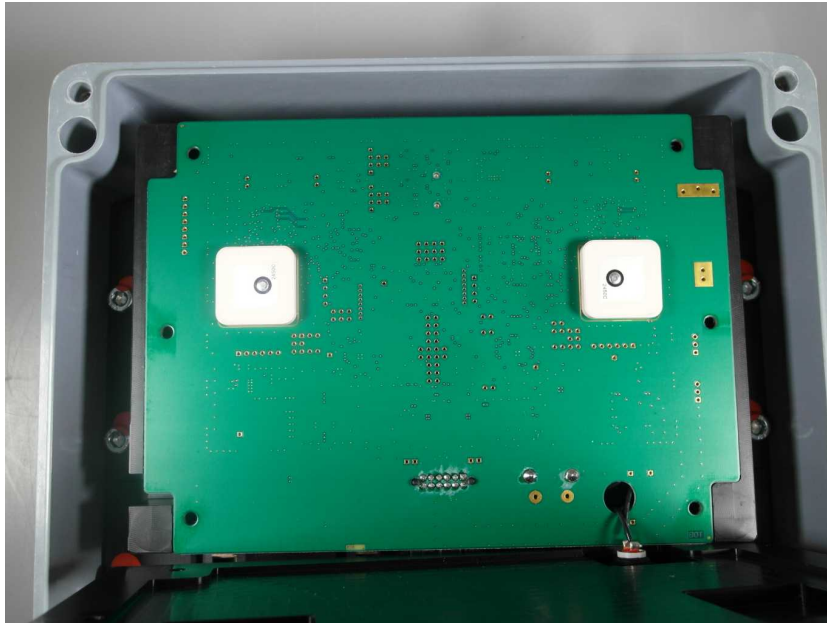


Photo 17: 1471759 device PCB back side view

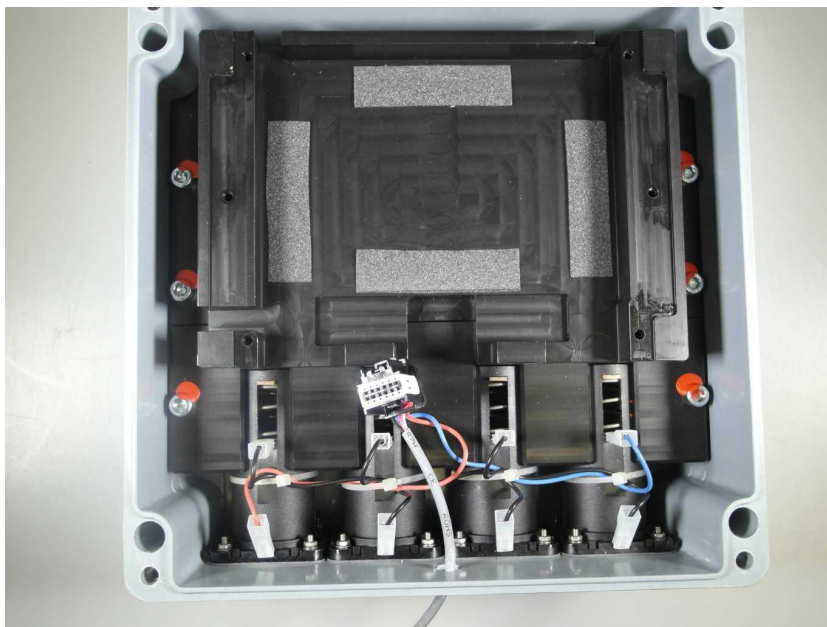


Photo 18: 1471759 device opened

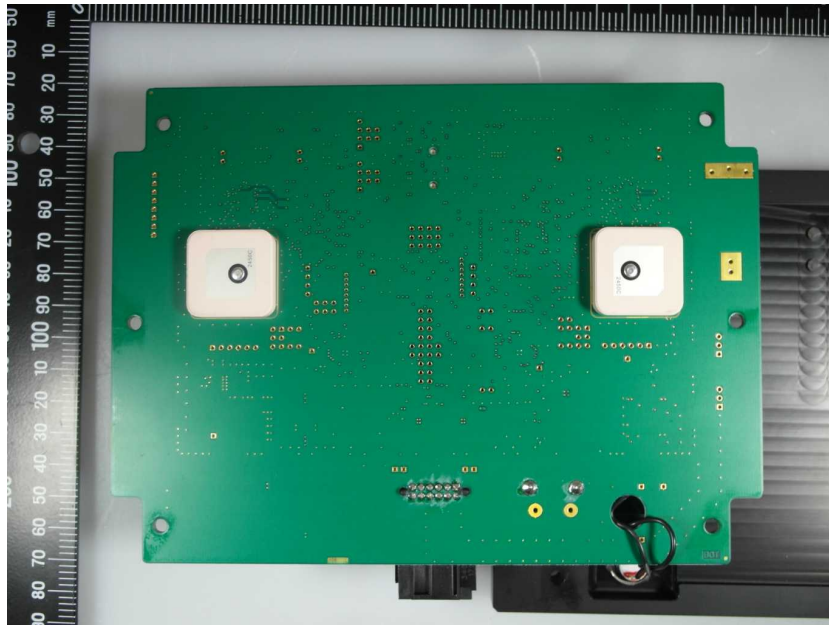


Photo 19: 1471759 device PCB back side view

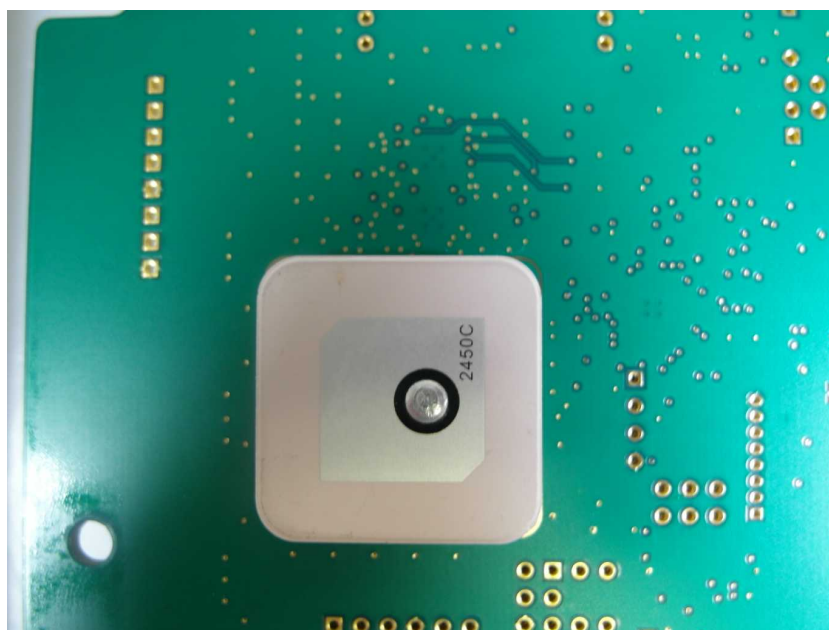


Photo 20: 1471759 device PCB back side view, antenna

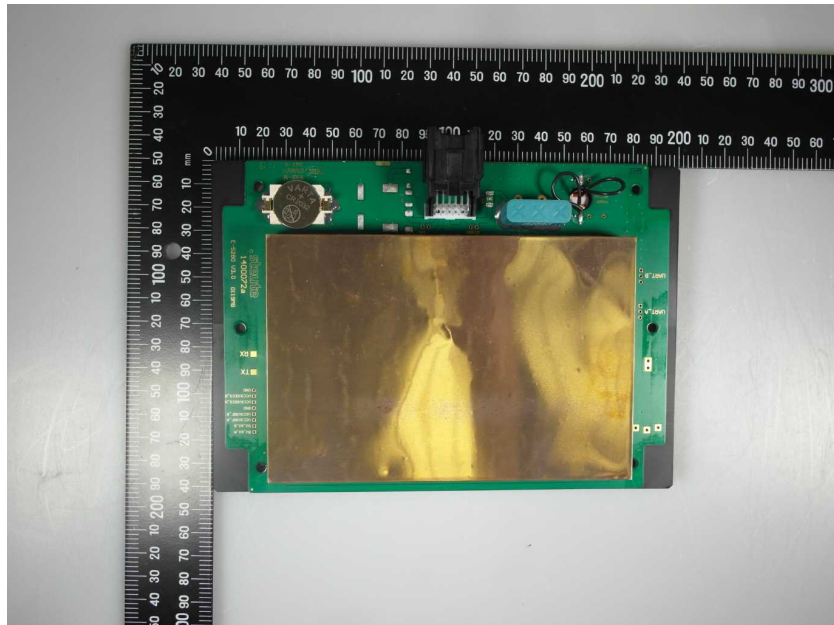


Photo 21: 1471759 device PCB front side view with shielding

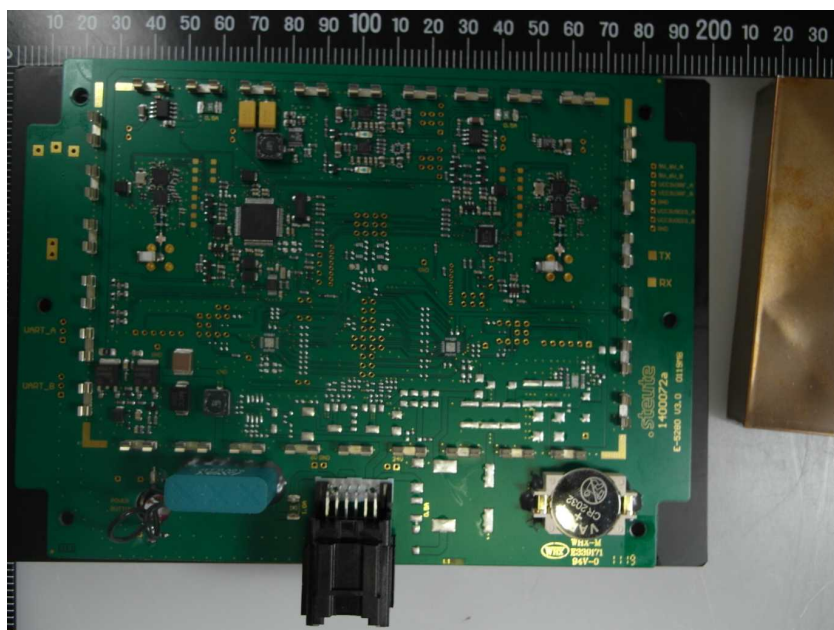


Photo 22: 1471759 device PCB front side view without shielding

Document history

Version	Applied changes	Date of release
	initial release	2020-11-02
- END OF DOCUMENT -		