

5.0 Energy Saving Sleep mode

The keyboard will kick into sleep mode when it is inactive for 10 minutes. To activate from sleep mode, just press any key and wait 3 seconds, the keyboard will come back on.

6.0 Safety Caution

1. Do not place heavy object on top of the keyboard.
2. Do not Microwave the item.
3. Do not force or distorted the keyboard.

7.0 Troubleshooting

- (A) Unable to connect
1. Make sure the power switch is on.
 2. Make sure the keyboard is within the operating distance.
 3. Make sure the battery is charged.
 4. Make sure iPad Bluetooth setting is on.
 5. Make sure wireless keyboard is connected to iPad.
 6. Make sure the wireless keyboard has been paired with the iPad.
- (B) Unable to charge keyboard
1. Make sure the USB power cable is connected properly to the keyboard and the power source.
 2. Make sure the wall charger is plug into the power outlet.

8.0 Special keys description

Long press Fn and combination with F1-F12 and insert keys to default to the shift multimedia keys, and mainly be used in the operation of iPad multimedia

This device complies with Part 15 of the FCC Rules. Operation is subject to the following two conditions: (1) this device may not cause harmful interference, and (2) this device must accept any interference received, including interference that may cause undesired operation. Changes or modifications not expressly approved by the party responsible for compliance could void the user's authority to operate the equipment.

This equipment has been tested and found to comply with the limits for a Class B digital device, pursuant to Part 15 of the FCC Rules. These limits are designed to provide reasonable protection against harmful interference in a residential installation. This equipment generates, uses and can radiate radio frequency energy and, if not installed and used in accordance with the instructions, may cause harmful interference to radio communications. However, there is no guarantee that interference will not occur in a particular installation.

If this equipment does cause harmful interference to radio or television reception, which can be determined by turning the equipment off and on, the user is encouraged to try to correct the interference by one or more of the following measures:
—Reorient or relocate the receiving antenna.

—Increase the separation between the equipment and receiver.

—Connect the equipment into an outlet on a circuit different from that to which the receiver is connected.

—Consult the dealer or an experienced radio/TV technician for help.

Replaceable batteries

If an equipment is provided with a replaceable battery, and if replacement by an incorrect type could result an explosion(for example, with some lithium batteries), the following applies:
-if the battery is placed in an OPERATOR ACCESS AREA, there shall be a marking close to the battery or a statement in both the operating and the servicing instructions;
-if the battery is placed elsewhere in the equipment, there shall be a marking close to the battery or a statement in the servicing instructions.

This marking or statement shall include the following or similar text:

CAUTION:
RISK OF EXPLOSION IF BATTERY IS REPLACED BY AN INCORRECT TYPE.
DISPOSE OF USED BATTERIES ACCORDING TO THE INSTRUCTIONS.

iPad, iPhone, iPod Touch are trademarks of Apple Inc.

CHINFAI(HK) TECHNOLOGY CO.,LIMITED
Factory Address: Building 2c-2d, Yingfeng Industrial Park, Sanhe Economic Development Zone, Huiyang District, Huizhou City, Guangdong Province.
WWW.Silicon-rubber.com



Plastic Bluetooth Keyboard for iPad/ iPad 2 User Guide KB-6300



1.0 Product Features:

1. Built-in wireless Bluetooth 2.0 / 3.0 plastic keyboard.
2. iPad display stand for easy viewing.
3. Built-in Rechargeable lithium battery lasts for approximately 30 hours per charge.
4. Special 【home】 screen key for one touch access to variety of application.
5. Energy saving keyboard sleep mode.

Packing Contents:

1. Bluetooth Keyboard
2. USB Power Charging Cable
3. User Guide

Bluetooth Keyboard Specification and Pairing Instruction

2.0 Keyboard Specification

1. Bluetooth 2.0 / 3.0 interface standard
2. Operating Distance to 10 meters
3. Modulation System:GFSK
4. Operatin Voltage:3.0-5.0V
5. Working Current:<5.0mA
6. Standby Current:2.5mA
7. Sleeping Current:<200μA
8. Charging Current:≥100mA
9. Standby Time:45days
10. Charging Time:2-2.5 hours
11. Lithium Battery Capacity:200mAh
12. Uninterrupted Working Time: 30 hours
13. Lithium Battery Life:3 years
14. Lithium Battery Specifications: 45x16x3 mm
15. Key Life: 5 million strokes
16. Operating Temperature:-10 - + 45℃

3.0 Bluetooth Keyboard Pairing

Step 1:Turn on the power toggle switch.The [power] and [Bluetooth] indicator light will be in 5 seconds,then the light will go off.

Step 2:Press on the [connect] button.The [Bluetooth] indicator light will be blinking ,and the [power] indicator will be on.The keyboard is now ready to be connected to iPad.

Link Button



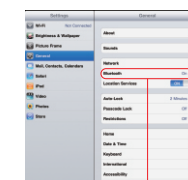
Power Switch

Step 3:Turn on and unlock iPad.Click on the iPad [settings] icon.



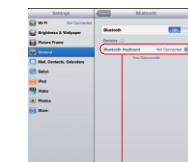
iPad [setting] icon

Step 4:On the settings menu,select item [General] to access [Bluetooth] settings.Click on [Bluetooth] to turn on the connection. iPad will automatically search for a Bluetooth-enabled device.



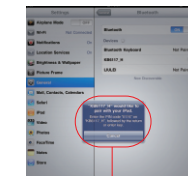
Click to turn on Bluetooth setting

Step 5:Wireless Keyboard found.Click on the device to connect.



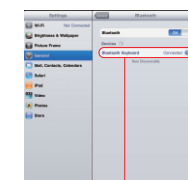
Click on the keyboard to connect

Step 6:Enter the password code as displayed on screen.



Enter password code using the wireless keyboard

Step 7:Wireless keyboard connected successfully.[power] indicator light will stay on until the keyboard is swithed off.



Keyboard connected successfully

Special Note:

The wireless keyboard can be connected to iPhone3G,3GS,4G and iPod Touch that had installed iOS 4.0 or later.For other Bluetooth enabled device,please verify the Bluetooth standard &compatibility before attempting to connect to the keyboard.

4.0 Charging

When the battery power is low,the [power] indicator light will start blinking,it is time to recharge the keyboard.

Step 1:Connect USB-B of the native USB power cable to the keyboard charging interface

Step 2:Connect USB-A to the power adaptor or computer's USB interface

Step 3:The [charge] red indicator light will stay on when the keyboard is charging.Once it finished charging,the [charge] indicator light will turn off.