

110mm

80mm

Bluetooth Keyboard Case

For iPad® mini / Samsung 7" tablet
/ Other tablet PC

USER MANUAL



Package Contents

Your Keyboard package includes the following

1. Bluetooth keyboard with case-----1
2. Charging cable-----1
3. User manual-----1

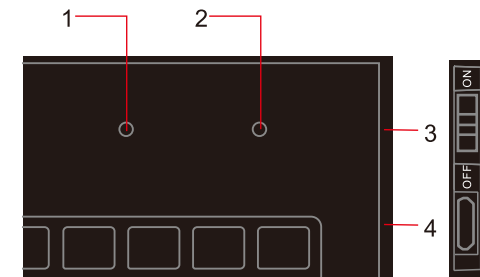


Illustration legend:

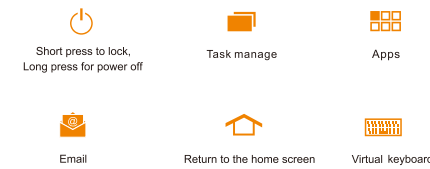
- 1-----Power On/Off Light
- 2-----Battery Charge Light
- 3-----On/Off Switch
- 4-----Micro-USB Charge Port

Keyboard specification:

1. Bluetooth 3.0 interface standard
2. Operating Distance: >6 meters
3. Modulation System: GFSK
4. Built-in Lithium Battery
5. Operatin Voltage: 3.0-5.0V
6. Working Current: <3.0mA
7. Standby Current: 2.0mA
8. Sleeping Current: <150µA
9. Charging Current: >100mA
10. Key Life: 5 million strokes
11. Operating Temperature: -10 - +45°C

■ - 1 - ■

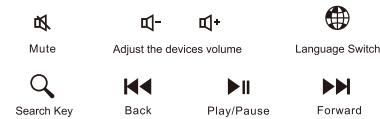
Special keys description



NOTE: These keys can be used under the Android system, cannot be used under iPad®, iPhone® (iOS 4/5).



NOTE: These keys can be used under the iPad®, iPhone® (iOS 4/5), cannot be used under Android, PC Window XP system.



NOTE: For above individual functional keys (silk printing), it's well applied for iOS or Android systems, but maybe it'll manifest inaction or uncorresponding performance when applied on such systems as Windows, Symbian, etc.

■ - 2 - ■

Main Features

1. Built-in Wireless Bluetooth 3.0 keyboard.
2. Stylish protective PU leather Case designed for iPad® mini, Samsung 7" tablet & Other tablet PC display stand for easy viewing.
3. Built-in Rechargeable lithium battery.
4. Special home screen key for one-touch access to variety of applications.
5. Light weight, quiet keystrokes.
6. Energy saving keyboard sleep mode.

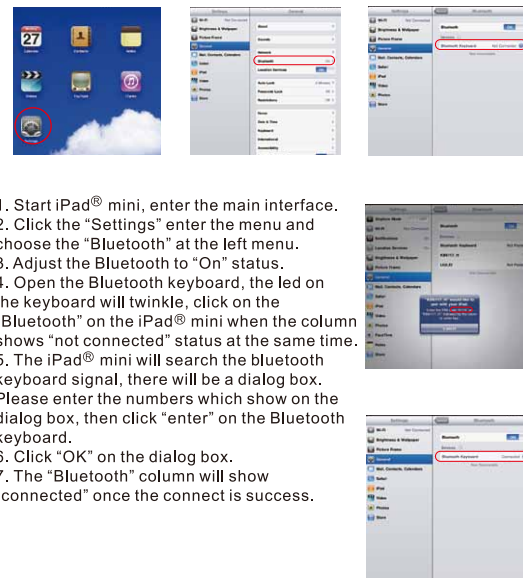
Bluetooth Keyboard Specification and Pairing Instruction

1. Turn power switch ON. The POWER and Bluetooth indicator light will be on for 5 seconds. The keyboard should automatically connect with the tablets via Bluetooth.
2. If the auto-pair fails, pair the keyboard to the tablets manually by pressing simultaneously the & keys several times, until the tablet display a PIN Code. Enter the PIN Code with the keyboard, and press the ENTER key. The keyboard should connect successfully.

NOTE: If the indicator light goes out for 3 minutes and there is no connection, this means that the indicator has gone into sleep mode. Restart pairing by turning the POWER switch OFF and ON again.

■ - 3 - ■

Bluetooth keyboard connect iPad® mini instruction

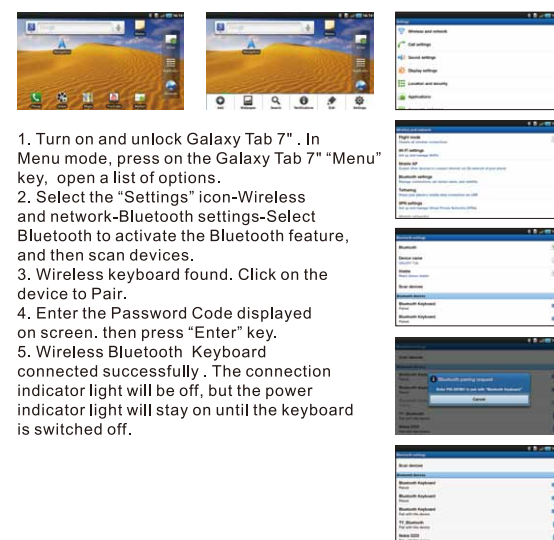


iPad® iPhone® are trademarks of Apple Inc.



■ - 4 - ■

Connection steps for Galaxy Tab 7"



CAUTION
RISK OF EXPLOSION IF BATTERY IS REPLACED
BY AN INCORRECT TYPE.
DISPOSE OF USED BATTERIES ACCORDING
TO THE INSTRUCTIONS

■ - 5 - ■

changes or modifications not expressly approved by the party responsible for compliance could void the user's authority to operate the equipment.

This equipment has been tested and found to comply with the limits for a Class B digital device, pursuant to Part 15 of the FCC Rules. These limits are designed to provide reasonable protection against harmful interference in a residential installation. This equipment generates, uses and can radiate radio frequency energy and, if not installed and used in accordance with the instructions, may cause harmful interference to radio communications. However, there is no guarantee that interference will not occur in a particular installation.

If this equipment does cause harmful interference to radio or television reception, which can be determined by turning the equipment off and on, the user is encouraged to try to correct the interference by one or more of the following measures:

- Reorient or relocate the receiving antenna.
- Increase the separation between the equipment and receiver.
- Connect the equipment into an outlet on a circuit different from that to which the receiver is connected.
- Consult the dealer or an experienced radio/TV technician for help.

■ - 6 - ■

材质：128g铜版纸, 处理:正反4色印刷,3折页