

5.0 Energy Saving Sleep mode

The keyboard will kick into Sleep mode when it is inactive for 15 minutes,and the keyboard power indicator light will go off. To activate from sleep mode ,just press any key and wait 3 seconds ,the keyboard will come back on.

6.0 Safety Caution

- 1.Keep the item away sharp objects.
- 2.Do not placeheavy object on top of the keyboard.
- 3.Do not Microwave the item.
- 4.Do not force or distorted the keyboard.
- 5.Keep away form oil, chemical or any other organic liquid.

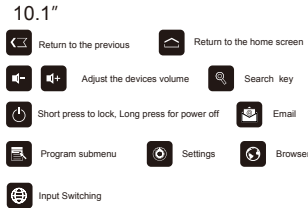
7.0 Cleaning

Clean the silicon keyboard with water ,alcohol, or alcohol based disinfectant.

8.0 Troubleshooting

- (A).Unable to connect
- 1.Make Sure the power switch is on.
 - 2.Make Sure the keyboard is within the operting distance.
 - 3.Make sure the battery is charged.
 - 4.Make sure Galaxy Tab 10.1” Bluetooth is activate.
 - 5.Make sure the Wireless Keyboard is connected to Galaxy Tab 10.1”.
 - 6.Make sure the wireless keyboard has been paired with t Galaxy Tab 10.1”.
- (B). Unable to Charge keyboard
- Make Sure the USB power cable is connected properly to the keyboard and the power source.

9.0 Special keys on the Galaxy Tab



This device complies with Part 15 of the FCC Rules. Operation is subject to the following two conditions: (1) this device may not cause harmful interference, and (2) this device must accept any interference received, including interference that may cause undesired operation. Changes or modifications not expressly approved by the party responsible for compliance could void the user’s authority to operate the equipment.

This equipment has been tested and found to comply with the limits for a Class B digital device, pursuant to Part 15 of the FCC Rules. These limits are designed to provide reasonable protection against harmful interference in a residential installation. This equipment generates, uses and can radiate radio frequency energy and, if not installed and used in accordance with the instructions, may cause harmful interference to radio communications. However, there is no guarantee that interference will not occur in a particular installation.

If this equipment does cause harmful interference to radio or television reception, which can be determined by turning the equipment off and on, the user is encouraged to try to correct the interference by one or more of the following measures:
--Reorient or relocate the receiving antenna.

--Increase the separation between the equipment and receiver.

--Connect the equipment into an outlet on a circuit different from that to which the receiver is connected.

--Consult the dealer or an experienced radio/TV technician for help.

Replaceable batteries

If an equipment is provided with a replaceable battery, and if replacement by an incorrect type could result an explosion(for example, with some lithium batteries), the following applies:
-if the battery is placed in an OPERATOR ACCESS AREA, there shall be a marking close to the battery or a statement in both the operating and the servicing instructions;
-if the battery is placed elsewhere in the equipment, there shall be a marking close to the battery or a statement in the servicing instructions.

This marking or statement shall include the following or similar text:

CAUTION:
RISK OF EXPLOSION IF BATTERY IS REPLACED BY AN INCORRECT TYPE.
DISPOSE OF USED BATTERIES ACCORDING TO THE INSTRUCTIONS.

CHINFAI(HK) TECHNOLOGY CO.,LIMITED
Factory Address: Building 2c-2d, Yingfeng Industrial Park, Sanhe Economic Development Zone, Huiyang District, Huizhou City, Guangdong Province.
WWW. Silicon-rubber.com



Galaxy Tab 10.1” Wireless Bluetooth Keyboard
User Guide
KB-6119G

Congratulations on your purchase of the Wireless Bluetooth Keyboard, Please read this instruction book first



1.0 Product Features:

- 1.Built-in Wireless Bluetooth 3.0 Silicone keyboard
- 2.Stylish protective PU leather Case designed for Galaxy Tab 10.1” display stand for easy viewing
- 3.Rechargeable lithium battery lasts for approximately 45 Hours per charge.
- 4.Special home screen key for one-touch access to variety of applications.
- 5.Light weight, quiet keystrokes, dust proof&spill-proof
- 6.Energy saving keyboard sleep mode

Packing Contents:

- 1.Wireless Bluetooth Keyboard
- 2.PU Leather Case
- 3.USB Power Charging Cable
- 4.User Guide

Bluetooth Keyboard Specification and Pairing Instruction

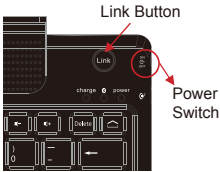
2.0 Keyboard Specification

- 1.Bluetooth V3.0 interface Standard
- 2.Operating Distance : 10meters
- 3.Modulation System: GFSK 2.4G
- 4.Transmitting Power : Class 2
- 5.Operating Voltage:3.0-5.0
- 6.Working Current : <5.0mA
- 7.Standby Current :2.5mA
- 8.Sleeping Current: <200μA
- 9.Charging Current :>100mA
- 10.Standby time : 60 days
- 11.Uninterrupted working time:45hours
- 12.Lithium Battery Life :3 years
- 13.Lithium Battery Specifications : 47×25×4.5mm
- 14.Charging time :4-4.5hours
- 15.Lithium Battery Capacity :450mA
- 16.Key Dynamics : 80±10g
- 17.Key Life : 5 million strokes
- 18.Operating Temperature :-10℃ – +55℃
- 19.Humidity :20%-50%

3.0 Bluetooth Keyboard Pairing

Step1: Turn on the power switch .the Power and Bluetooth indicator light will be on for 5 seconds , then the lights will go off.

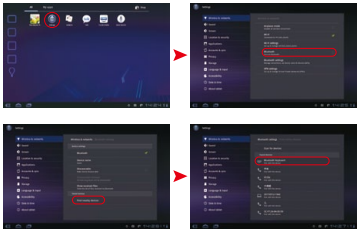
Step2: Press on the “Link” button ,The Bluetooth indicator light will be blinking ,and the power indicator will be on.The Keyboard is now ready to be connected to Galaxy Tab 10.1”.



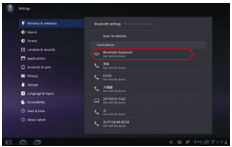
Step3: Turn on and unlock Galaxy Tab 10.1”.In home screen, open app menu, touch “Apps” in the upper right corner



Step4: Select the “Settings” icon ----- Wireless and networks ---- activate the Bluetooth -----Bluetooth settings----find nearby devices----scan for devices

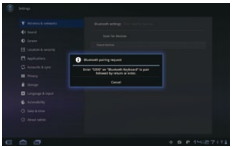


Step5: Wireless keyboard found .click on the device to Pair



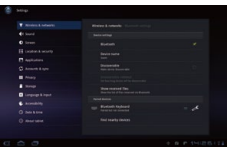
Click on the keyboard to connect

Step6: Enter the number code displayed on screen with the bluetoothkeyboard. And press “Enter”key



Enter password code using the wireless keyboard

Step7: Wireless Bluetooth Keyboard connected successfully .“the connection indicator light will be off ,But the power indicator light will stay on until the keyboard is switched off



Keyboard connected successfully

Special Note:
The wireless keyboard can be connected to Galaxy Tab 10.1” ,iPad, iPhone4G ,and iPod Touch that had installed iOS 4.0 or later. For other Bluetooth enabled device ,please verify the Bluetooth standard&compatibility before attempting to connect to the keyboard

4.0 Charging

When the battery power is low ,the “power” indicator light will start blinking .it is time to recharge the keyboard.

- Step1: Connect the USB power cable to the keyboard charging interface
 - Step2: Connect the charging cable A port into USB power or USB Power Adapter.
- The “charge”red indicator light will stay on , when the keyboard is charging. Once it finished charging,the “charge”indicator light will turn off.