

7.0 Main Features

- 01. Use Broadcom Chipset with wireless Bluetooth 2.0 interface**
- 02. Features comfortable, ergonomic design with 18 function keys**
- 03. Unique super energy saving mode, battery life longer than similar products by 50%**
- 04. Come with particular power managing software, indicates the power capacity in Microsoft Windows System automatically**
- 05. Use the Bluetooth industry leading software solutions, WID COMM BTW (Microsoft officially designated software) Bluetooth software**
- 06. Built-in software solutions with Bluetooth human interface device and comply with the standard version of the Bluetooth SIG Bluetooth 2.0**
- 07. Work with windows 98, ME, 2000, Server 2003, XP and Vista**
- 08. AAA alkaline battery x2**
- 09. Frequency band: 2.4-2.4835GHz unlicensed ISM band**
- 10. Receiving sensitivity: -75dBm(standard)**
- 11. RF output power: up to 4dBm as maximum, good for your health with lowest radiates**
- 12. Operation distance: 10m**
- 13. Operating temperature: -10~50°C**
- 14. Workable environment: 0~55°C**
- 15. Humidity: 20%-50%**
- 16. Support Sony PS3**

8.0 Hotkeys on the Keyboard

Internet Hotkeys



Home



Refresh



Search



My Favorites



E-mail



Stop



Forward



Back

9.0 Multimedia Hotkeys



Next Track



Previous Track



Stop



Play/Pause



Mute



Media



High Volume



Low Volume

10. PC Hotkeys



My computer



Sleep

11. Step for Bluetooth keypad drive connection:

1. Press on the Bluetooth keypad keystroke to connect.
2. Click the Bluetooth icon of taskbar by mouse right-key, choose add Bluetooth equipment and come out dialog box Bluetooth installation navigator, to click Next, enter into searching equipment status.
3. Choose the keypad icon from equipment searching frame, and click Next, so Bluetooth keypad and Bluetooth adapter can automatically match, it will be come out six number matching code at this moment, so user must input six number in the Bluetooth keypad, then press the enter key to confirm, to click Next, if input correctly, it will be regularly used.

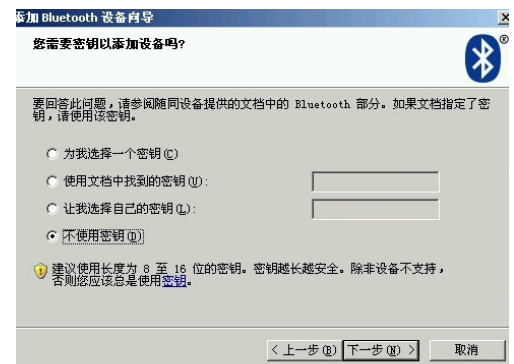
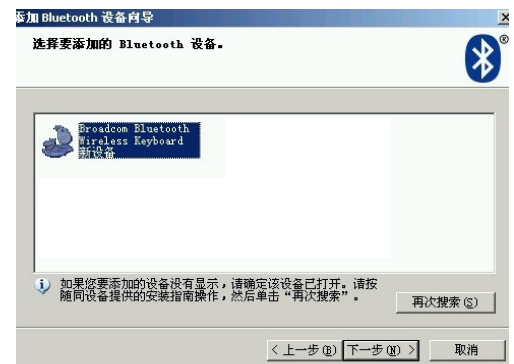
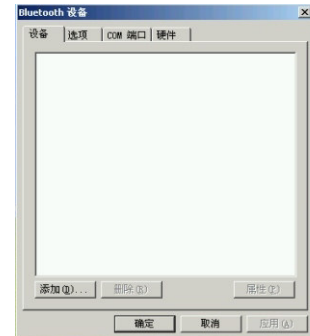


12. Step for inner Bluetooth keypad drive connection:

1. Press on the Bluetooth keypad keys to connect.

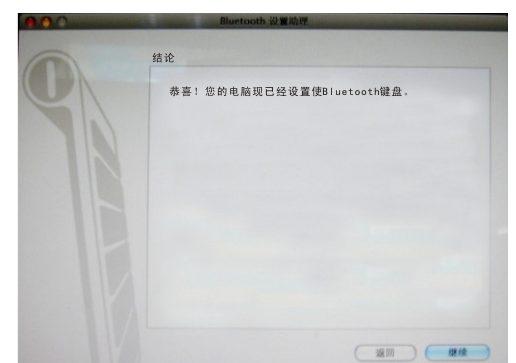
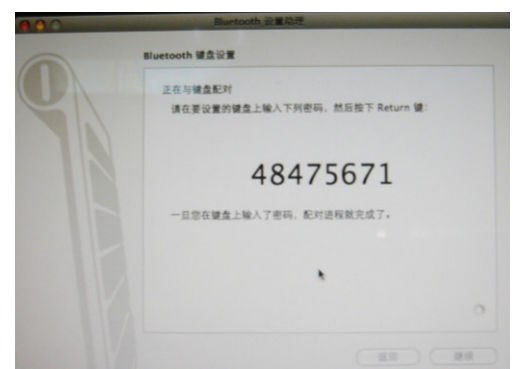
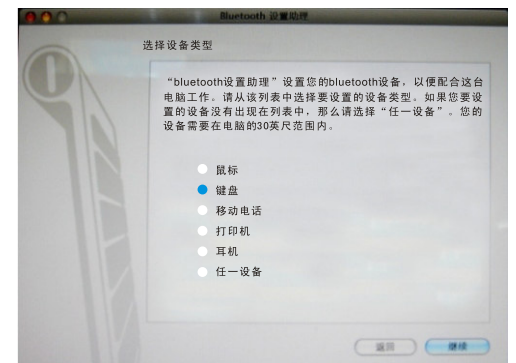
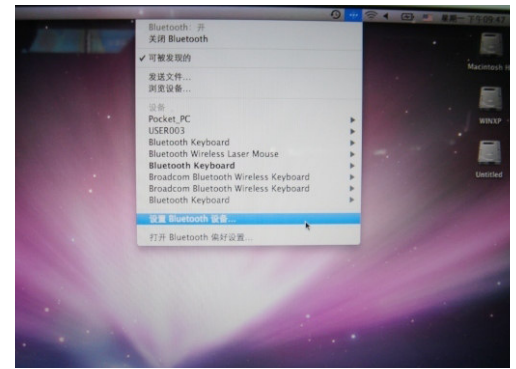
2. Double click the Bluetooth icon of taskbar, open up “Bluetooth equipment windows, to click add. Choose My equipment is installed and already well, you can look for (F) pition, then click Next.

3. From d Bluetooth equipment navigator windows you can choose and find the new Bluetooth equipment, to click Next, and choose nonuse secret-key, to click Next, the system will atomatically finish Bluetooth keypad connection to install, then click finish if input correctly, it will be regularly used.



13.The guide for the bluetooth keyboard contact with MAC system:

- 1) Open the switch which contact with bluetooth keyboard.
- 2) Click the bluetooth icon with your right mouse button in the taskbar icon of MAC system, choose the setup the bluetooth installation windows, then the bluetooth assistant will out..then continue click the keyboard enter the next process.
- 3) Pitch on the keyboard icon in the search frame, next ,the bluetooth keyboard will match with the bluetooth adapter automatically, meanwhile, there will have eight number for match code, the user need to input the eight number on the bluetooth keyboard then press the enter button. then the bluetooth keyboard could use as normal.



14.The guide for the bluetooth keyboard contact with IVT:

- 1.Open the switch which contact with bluetooth keyboard.
- 2.Click my bluetooth in the main memu,then choose the first line search the bluetooth installation, then the keyboard icon will show.
- 3.Choose the efresh button with right mouse button,then click the luetooth human-machine input installation service from contact with right mouse button. then the bluetooth keyboard will match with the bluetooth adapter automaticly, then the bluetooth keyboard could use as normal.

