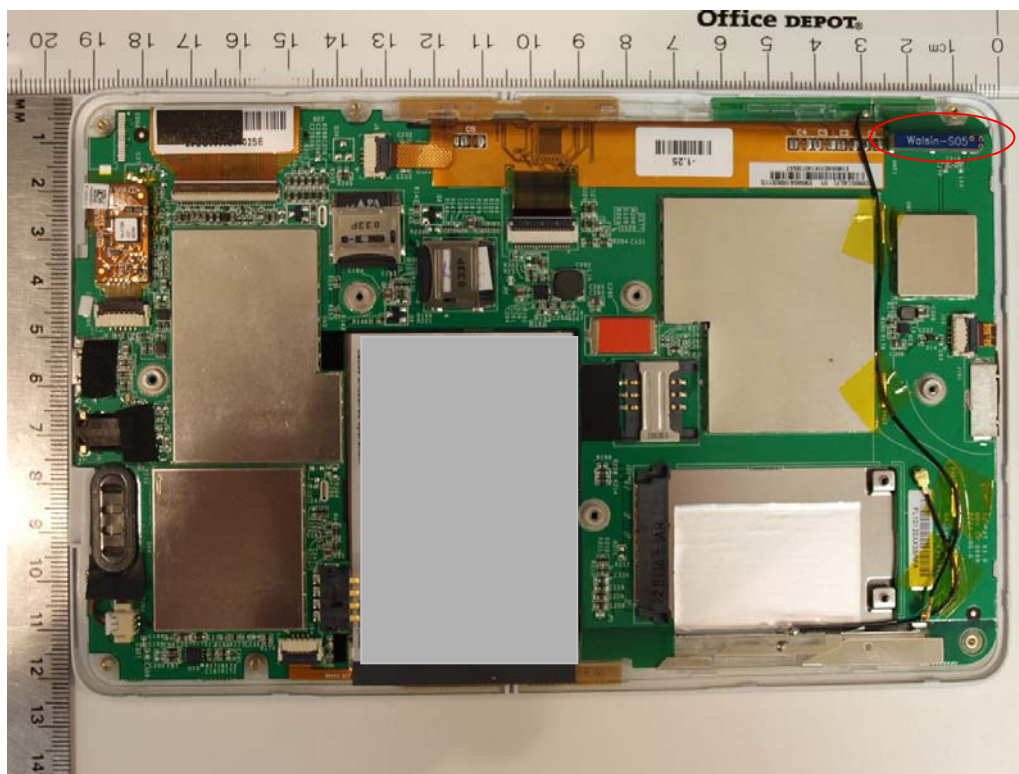
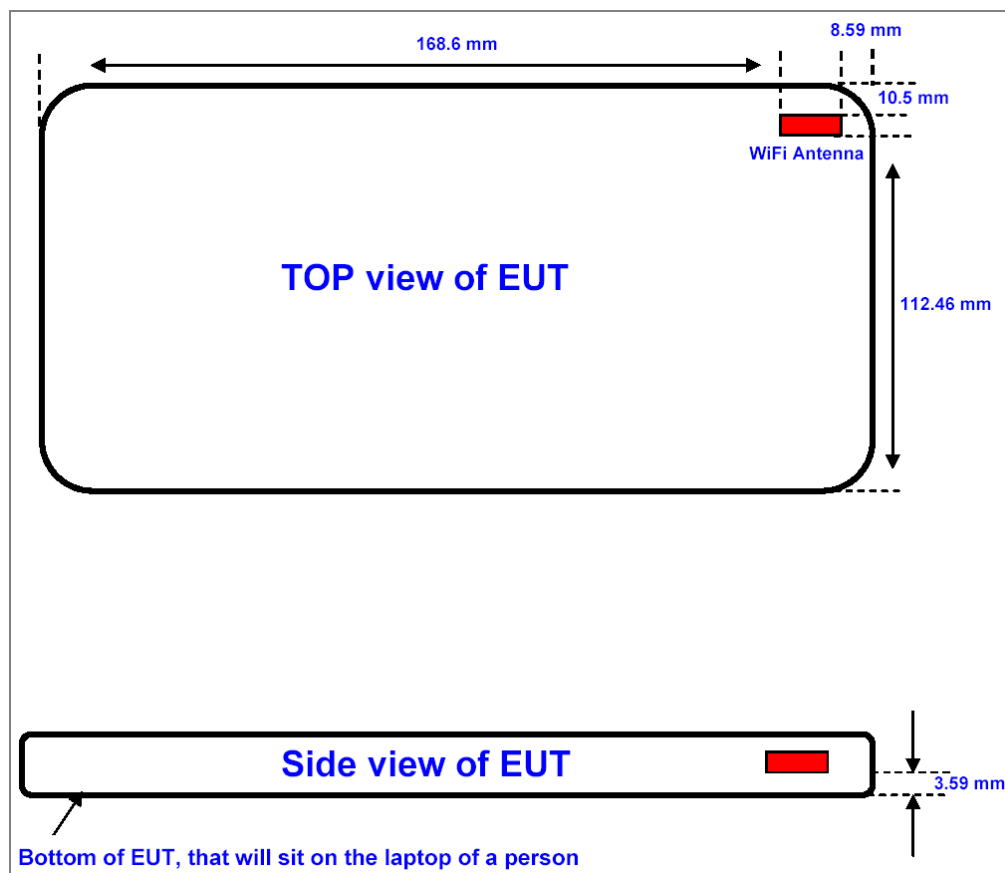


14. ANTENNA TO USER SEPARATION DISTANCES



15. TEST SETUP PHOTOS

Tablet - Bottom face (3.59 mm from Tx antenna-to-user)



Edge - Primary Landscape (No SAR)



Tablet - Edge - Secondary Landscape (10.5 mm from Tx antenna-to-user)



Edge - Primary Portrait (No SAR)



Tablet - Edge: Secondary Portrait (8.59 mm from Tx antenna-to-user)

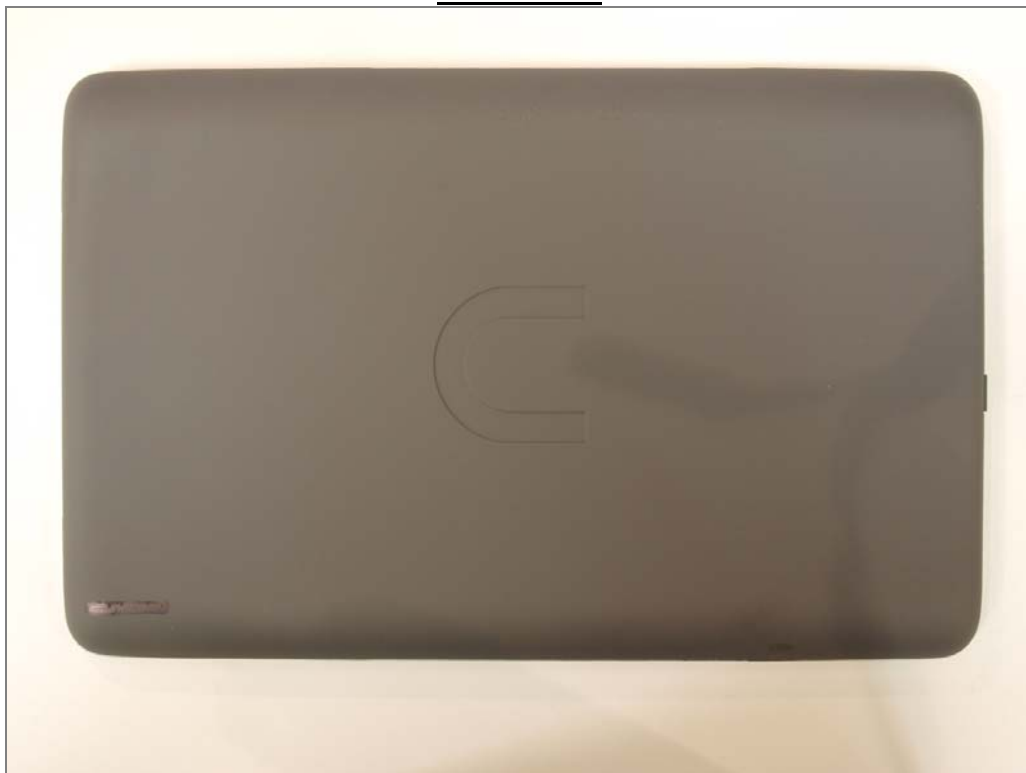


16. HOST DEVICE PHOTOS

Front View



Bottom View



END OF REPORT