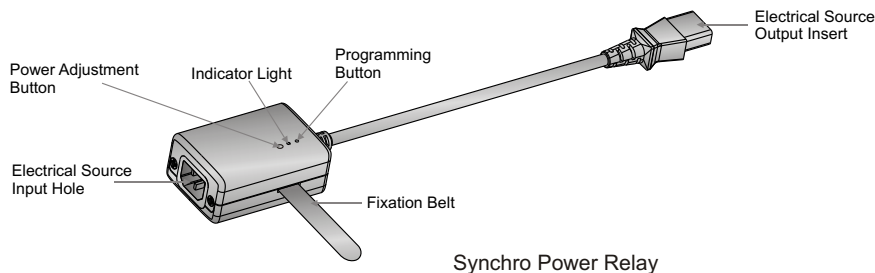


### Description



Synchro Power Relay

Production Model: ES-2W2  
 Input Voltage: 120V  
 Voltage Frequency : 50/60Hz  
 Max Input/output power : 10A  
 Power Input: UI817  
 Power Output: IEC320  
 Self-power: 1W  
 Transmitting Power: 2.5mW  
 Antennary Method: Built-in ring  
 Modulation Method: FM  
 Transmitting Frequency : 868MHz

### Usage

**1**

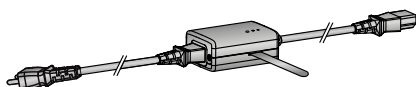


Figure 1

1. Insert power line of projector into Electrical Source Input Hole ( Figure 1 ).

**2**

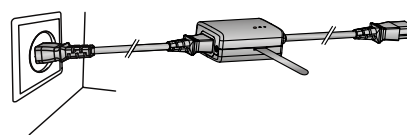
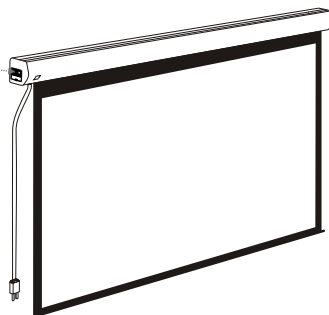
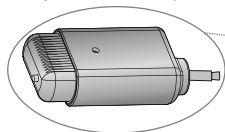


Figure 2

2. Connect power ( Figure 2 ), indicator light will turn on and stay on.

**3**

Wireless Synchro Converter (RF to IR)



Synchro Power Relay

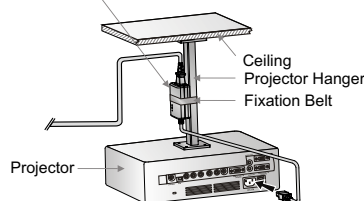


Figure 3

This product can only be used in Grandview Integrated Motorized Screen with "EXT CTRL" input hole.

**4**

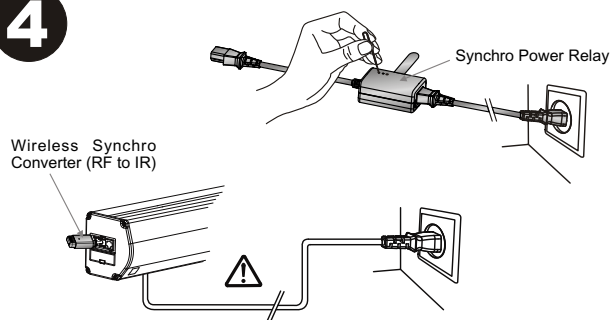


Figure 4

4. Insert a small pin into programming button of Synchro Power Relay. And then the indicator light will flash repeatedly. Afterward, the programming instruction will be synced to both devices and the program mode will end. Once completed, the indicated light will stop flashing and stay on.

**5**

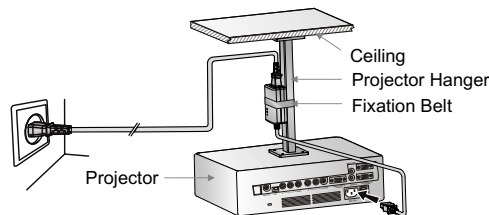


Figure 5

5. Use fixation belt to fix synchronization wireless emitter on projector hanger frame. Put output insert into AC IN hole of projector ( Figure 5 ).

#### Grandview Crystal Screen Canada Ltd.

#11- 3751 North Fraser Way, Marine Way Business Centre,  
 Burnaby, BC, Canada V5J 5G4  
 Tel: 1-604-412-9777 Fax: 1-604-412-9796  
 Website: www.grandviewscreen.ca

#### Guangzhou Grandview Crystal Screen Co., Ltd.

P.O. 511400 Federal Ind. Zone No. 363, Yushan West Road,  
 Shiqiao, Panyu District, Guangzhou, Guangdong, China  
 Tel: +8620-8489-9499 Fax: +8620-8480-3343  
 Website: www.grandviewscreen.com

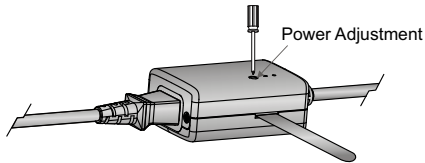
**6**

Figure 6

6. By adjusting the power, Synchro Power Relay can be used in any projectors. In the best performance, Screen opens automatically when projector is turned on; Screen closes automatically when projector is turned off.

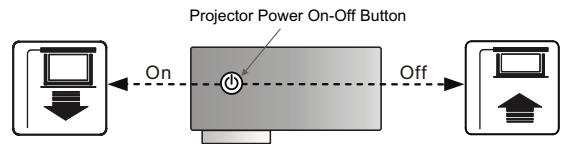
**7**

Figure 7

7. Screen opens automatically when projector is turned on; screen closes automatically when projector is turned off.

**Warning**

Changes or modifications to this unit not expressly approved by the party responsible for compliance could void the user's authority to operate the equipment.

**NOTE**

Please read these important safety instructions

Read and understand all instructions before installing and using the equipment.

Always connect this equipment to a grounded outlet. The power outlet should be located near the equipment and shall be easily accessible.

This equipment must be supplied from a power system providing a PROTECTIVE EARTH connection and having a neutral connection, which can be reliably identified.

Always ensure that the unit is properly earthed and power connections correctly made.

To reduce the risk of electric shock, do not disassemble this equipment, but take it to a qualified serviceman when service or repair is required. Incorrect reassembly can result in electric shock when used.

Close supervision is necessary when equipment is in use by or near children. Do not leave equipment unattended while in use.

Installer must ensure that the mounting structures .

Do not place or attach anything to metal casing or viewing surface of the equipment.

Position cord so that it will not be tripped over, pulled or in contact with hot surfaces.

Do not plug the cord with wet hands; electric shock could occur.

This equipment has been tested and found to comply with the limits for a Class B digital device, pursuant to Part 15 of the FCC Rules. These limits are designed to provide reasonable protection against harmful interference in a residential installation. This equipment generates, uses and can radiate radio frequency energy and, if not installed and used in accordance with the instructions, may cause harmful interference to radio communications. However, there is no guarantee that interference will not occur in a particular installation. If this equipment does cause harmful interference to radio or television reception, which can be determined by turning the equipment off and on, the user is encouraged to try to correct the interference by one or more of the following measures:

- reorient or relocate the receiving antenna.
- Increase the separation between the equipment and receiver.
- Connect the equipment into an outlet on a circuit different from that to which the receiver is connected.
- Consult the dealer or an experienced radio /TV technician for help.

**Grandview Crystal Screen Canada Ltd.**

#11- 3751 North Fraser Way, Marine Way Business Centre,  
Burnaby, BC, Canada V5J 5G4  
Tel: 1-604-412-9777 Fax: 1-604-412-9796  
Website: [www.grandviewscreen.ca](http://www.grandviewscreen.ca)

**Guangzhou Grandview Crystal Screen Co., Ltd.**

P.O. 511400 Federal Ind. Zone No. 363, Yushan West Road,  
Shiqiao, Panyu District, Guangzhou, Guangdong, China  
Tel: +8620-8489-9499 Fax: +8620-8480-3343  
Website: [www.grandviewscreen.com](http://www.grandviewscreen.com)