

Ke Mei Ou Laboratory Co., Ltd.

7A, Jiexiangge, JiahuiXincheng, No.3027, Shennan Rd., Futian,
Shenzhen, Guangdong, P.R.China. Zip Code: 518033
Tel: + 86 755 83642690 Fax: + 86 755 83297077
www.kmolab.com

FCC&IC TEST REPORT

Under

FCC 15 Subpart C, Paragraph 15.247: 2007 / RSS-210, Issue 7 and RSS-Gen Issue 2

Operating in 2400 ~ 2483.5 MHz Band

Prepared For :

GLIDETV INC.

4646 ITHACA WAY, PLEASANTON, CA 94588 USA

FCC ID: XGYGTV-100

IC: 8416A-GTV100

EUT: GLIDETV NAVIGATOR


Model: GTV-100

June 7, 2009

Report Type: Original Report

Test Engineer: Jacky Huang

Test Date: May 25, 2009


Review By: _____
Apollo Liu / Manager

The test report consists 34 pages in total. It may be duplicated completely for legal use with the allowance of the applicant. It shall not be reproduced except in full, without the written approval of Ke Mei Ou Laboratory Corporation. The test result in the report only applied to the tested sample.

TABLE OF CONTENTS

1. General Information.....	3
1. 1 Notes	3
1. 2 Testing Laboratory	3
1. 3 Details of Applicant	3
1. 4 Application Details.....	3
1. 5 Test Item.....	3
1. 6 Test Standards	3
2. Technical Test.....	4
2. 1 Summary of Test Results	4
2. 2 Antenna Requirement.....	4
3. EUT Modifications.....	4
4. Conducted Power Line Test	5
4. 1 Test Equipment	5
4. 2 Test Procedure	5
4. 3 Test Setup	5
4. 4 Configuration of the EUT.....	6
4. 5 EUT Operating Condition.....	7
4. 6 Conducted Power Line Emission Limits	7
4. 7 Conducted Power Line Test Result.....	8
5. FCC Part 15.247 Requirements for DSSS Systems	10
5. 1 Test Equipment	10
5. 2 Test Procedure	10
5. 3 Test Setup	10
5. 4 Configuration of the EUT.....	10
5. 5 EUT Operating Condition.....	10
5. 6 Limit	10
5. 7 Test Result	11
6. Transmitter Spurious Radiated Emission at 3 Meters.....	18
6. 1 Test Equipment	18
6. 2 Test Procedure	18
6. 3 Test Setup	18
6. 4 Configuration of the EUT.....	18
6. 5 EUT Operating Condition.....	18
6. 6 Limit	19
6. 7 Test Result	20
7. RF Exposure Requirements	22
7. 1 Test Equipment	22
7. 2 Limit	22
7. 3 Test Result	23
8. Photos of Testing	24
8. 1 EUT Test Photographs.....	24
8. 2 EUT Detailed Photographs	25
9. FCC ID Label	33
10. Test Equipment	34

1. General Information

1. 1 Notes

The test results of this report relate exclusively to the test item specified in 1.5. The KMO Lab does not assume responsibility for any conclusions and generalizations drawn from the test results with regard to other specimens or samples of the type of the equipment represented by the test item. The test report may only be reproduced or published in full. Reproduction or publication of extracts from the report requires the prior written approval of the KMO Lab.

1. 2 Testing Laboratory

Site on File with the Federal Communications Commission – United States
Registration Number: 963441

Site Listed with Industry Canada of Ottawa, Canada
Registration Number: 7353A

1. 3 Details of Applicant

Name : GLIDETV INC.
Address : 4646 ITHACA WAY, PLEASANTON, CA 94588 USA
Contact
Tel
Fax

1. 4 Application Details

Date of Receipt of Application : May 25, 2009
Date of Receipt of Test Item : May 25, 2009
Date of Test : May 25~June 7, 2009

1. 5 Test Item

Manufacturer : Same Applicant
Trade Name : GLIDETV
Model No. : GTV-100
Description : GLIDETV NAVIGATOR

Additional Information

Frequency : 2402MHz~2480MHz
Maximum Range : N/A
Number of Channels : 16
Transmitter Antenna : Internal
Power Supply : DC 3.7V(By Battery Supply) DC5V(Charge by PC Host)
Modulation Type : DSSS
Power Consumption : N/A

1. 6 Test Standards

FCC 15 Subpart C, Paragraph 15.247: 2007
--

Note: All radiated measurements were made in all three orthogonal planes. The values reported are the maximum values.

2. Technical Test

2.1 Summary of Test Results

The EUT has been tested according to the following specifications:

Standard	Test Type	Result	Notes
FCC Part 15, Paragraph 15.203 / 7.1.4 (RSS-GEN)	Antenna Requirement	PASS	Complies
FCC Part 15, Paragraph 15.107, 15.207 / 7.2.2(RSS-GEN)	Conducted Test	PASS	Complies
FCC Part 15.205 / RSS-210 A8.5	Radiated Emission (Restricted Band Requirements)	PASS	Complies
FCC Part 15.109, 15.209 / RSS-210 A8.5	Radiated Emission (Spurious Emission)	PASS	Complies.
FCC Part 15 Subpart C Paragraph 15.247(a)(2) / RSS-210 A8.2 (1)	Spectrum Bandwidth (6dB Bandwidth Measurement)	PASS	Complies.
FCC Part 15 Subpart C Paragraph 15.247(b)(3) / RSS-210 A8.2 (4)	Maximum Peak Power	PASS	Complies
FCC Part 15 Subpart C Paragraph 15.247(c)	100kHz Bandwidth of Frequency Band Edges	PASS	Complies
FCC Part 15 Subpart C Paragraph 15.247(d) / RSS-210 A8.2 (2)	Peak Power Spectral Density	PASS	Complies

* The digital circuit porting of the EUT has been tested and verified to comply with FCC Part 15, Subpart B., Class B Digital Devices and the associated Radio Receiver has also been tested and found to comply with FCC Part 15, Subpart B – Radio Receivers.

2.2 Antenna Requirement

According to Section 15.203, an intentional radiator shall be designed to ensure that no antenna other than that furnished by the responsible party shall be used with the device.

The EUT no antenna connector for printed antenna. This is permanently attached antenna and meets the requirements of this section.

7.1.4(RSS-GEN) - A transmitter can only be sold or operated with antennas with which it was certified. A transmitter may be certified with multiple antenna types. An antenna type comprises antennas having similar in-band and out-of-band radiation patterns. Testing shall be performed using the highest-gain antenna of each combination of transmitter and antenna type for which certification is being sought, with the transmitter output power set at the maximum level. Any antenna of the same type and having equal or lesser gain as an antenna that had been successfully tested for certification with the transmitter, will also be considered certified with the transmitter, and may be used and marketed with the transmitter. The manufacturer shall include with the application for certification a list of acceptable antenna types to be used with the transmitter.

3. EUT Modifications

No modification by test lab.

4. Conducted Power Line Test

4.1 Test Equipment

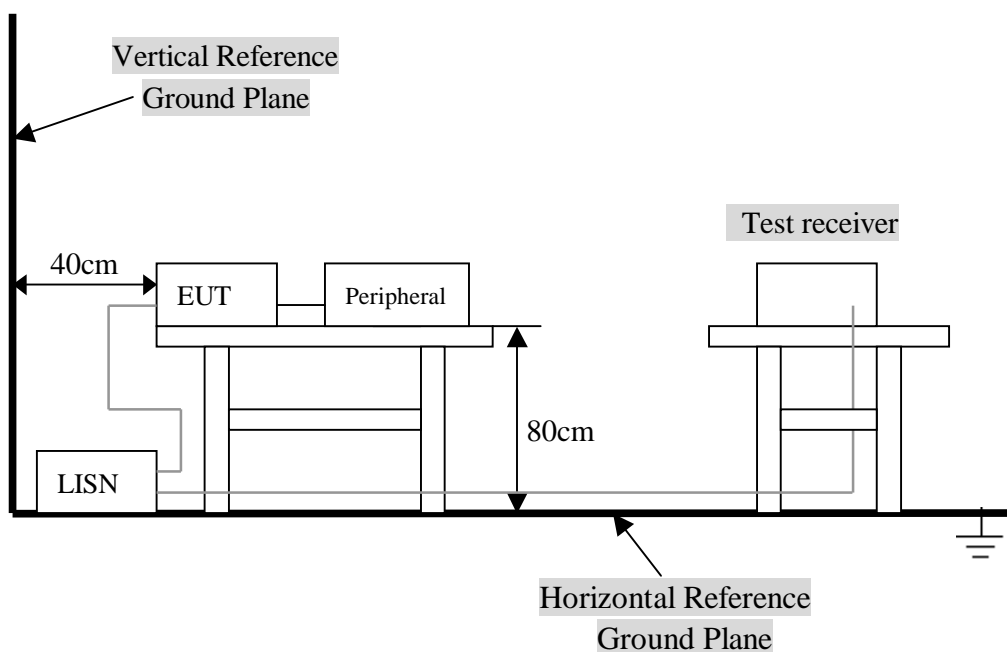
Please refer to Section 10 this report.

4.2 Test Procedure

The EUT and simulators are connected to the main power through a line impedance stabilization network (LISN). This provides a 50 ohm/50uH coupling impedance for the measuring equipment. The peripheral devices are also connected to the main power through a LISN that provides a 50ohm/50uH coupling impedance with 50ohm termination.

Both sides of A.C. line are checked for maximum conducted interference. In order to find the maximum emission., the relative positions of equipment and all of the interface cables must be changed according to ANSI C63.4:2003 on conducted measurement. Conducted emissions were invested over the frequency range from 0.15MHz to 30MHz using a receiver bandwidth of 9kHz.

4.3 Test Setup



For the actual test configuration, Please refer to the related items – Photos of Testing.

4. 4 Configuration of the EUT

The EUT was configured according to ANSI C63.4-2003. EUT was used DC3.7V. The operation frequency is from 2400MHz~2483.5MHz. Enable the signal transmitted from the EUT to Notebook PC. All interface ports were connected to the appropriate peripherals. All peripherals and cables are listed below.

Note:

- 1) Operating Modes: Each of lowest, middle and highest channel frequencies transmits continuously for emissions measurements. The EUT operates in normal DSSS for occupancy duration and frequency separation.
- 2) Special Test Software & Hardware: Special firmware and hardware provided by the Applicant are installed to allow the EUT to operate in DSSS or at each channel frequency continuously. For example, the transmitter will be operated at each of lowest, middle and highest frequencies individually continuously during testing.
- 3) Transmitter Test Antenna: The EUT is tested with the antenna fitted in a manner typical of normal intended use as an integral / non-integral antenna equipment as describe with the test results.
- 4) Frequency(ies) Tested: 2402MHz, 2441MHz and 2480MHz were pre-tested, The worst case one, was chosen for conducted emission test.
- 5) Above 1GHz, the 2402MHz, 2441MHz and 2480MHz were tested individually.
- 6) Normal Test Modulation: DSSS
- 7) Modulating Signal Source: Internal

* Associated Antenna Descriptions: The antenna used in this product is embedded antenna.

A. EUT

Device	Manufacturer	Model #	FCC ID
GLIDETV NAVIGATOR	AQS INC.	GTV-100	XGYGTV-100

B. Internal Devices

Device	Manufacturer	Model #	FCC ID
N/A			

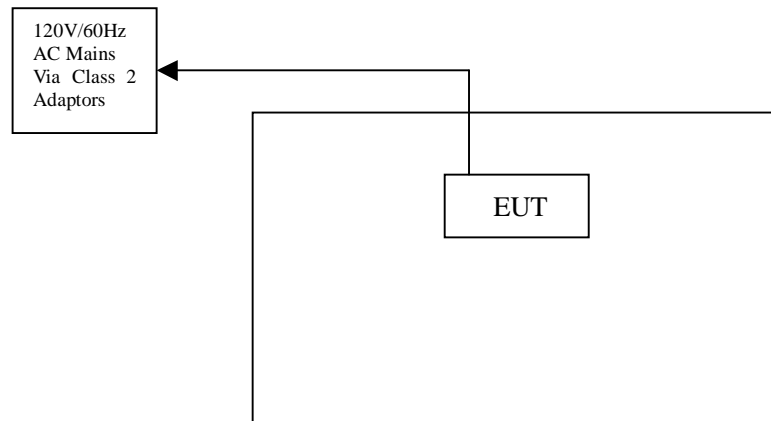
C. Peripherals

Device	Manufacturer	Model # Serial #	FCC ID/ DoC	Cable
Printer	HP	HP930C	DoC	1.5m unshielded power cord 1.2m unshielded data cable.
Modem	GVC	N/A	DoC	1.5m unshielded power cord 1.2m unshielded data cable.
Notebook	DELL	PP10L	DoC	1.5m unshielded power cord
PC	Dell	2400n	DoC	1.5m unshielded power cord

4. 5 EUT Operating Condition

Operating condition is according to ANSI C63.4 - 2003.

- A. Setup the EUT and simulators as shown on follow.
- B. Enable RF signal and confirm EUT active.
- C. Modulate output capacity of EUT up to specification.



4. 6 Conducted Power Line Emission Limits

FCC Part 15 Paragraph 15.207 (dBuV)		
Frequency Range (MHz)	Class A QP/AV	Class B QP/AV
0.15 – 0.5	79/66	66-56/56-46
0.5 – 5.0	73/60	56/46
5.0 - 30	73/60	60/50

NOTE : In the above table, the tighter limit applies at the band edges.

4. 7 Conducted Power Line Test Result

Product	: GLIDETV NAVIGATOR	Test Mode	: Charging
Test Item	: Conducted Emission Data	Temperature	: 25 °C
Test Voltage	: DC 5V (From Host)	Humidity	: 56% RH
Test Result	: PASS		

The frequency spectrum from 0.15 MHz to 30 MHz was investigated. All readings are quasi -peak values with a resolution bandwidth of 9 KHz.

- Temperature : 26 °C
- Humidity : 53 % RH

FCC Part 15 Paragraph 15.207							
Frequency (MHz)	Emission (dBuV)		LINE/ NEUTRAL	Limit (dBuV)		Margin (dB)	
	QP	AV		QP	AV	QP	AV
0.166	52.78	44.60	LINE	65.16	55.16	-12.38	-10.56
0.174	51.23	40.56	NEUTRAL	64.77	54.77	-13.54	-14.21
0.230	36.18	34.18	LINE	62.45	52.45	-26.27	-18.27
0.226	41.06	34.12	NEUTRAL	62.60	52.60	-21.54	-18.48
3.678	38.93	26.12	LINE	56.00	46.00	-17.07	-19.88
3.990	36.11	24.93	NEUTRAL	56.00	46.00	-19.89	-21.07

Note: NF = No Significant Peak was Found.

Note:

- 1.Uncertainty in conducted emission measured is <+/- 2dB.
- 2.The emission levels of other frequencies were very low against the limit.
- 3.All Reading Levels are Quasi-Peak and Average value.
- 4.Emission = Meter Reading + Factor; Factor = Insertion Loss + Cable Loss.
- 5.Margin Value = Emission Level - Limit Value.

Conducted Emission

EN55022

EUT: GLIDETV NAVIGATOR M/N: GTV-100

Manufacturer: AQS INC.

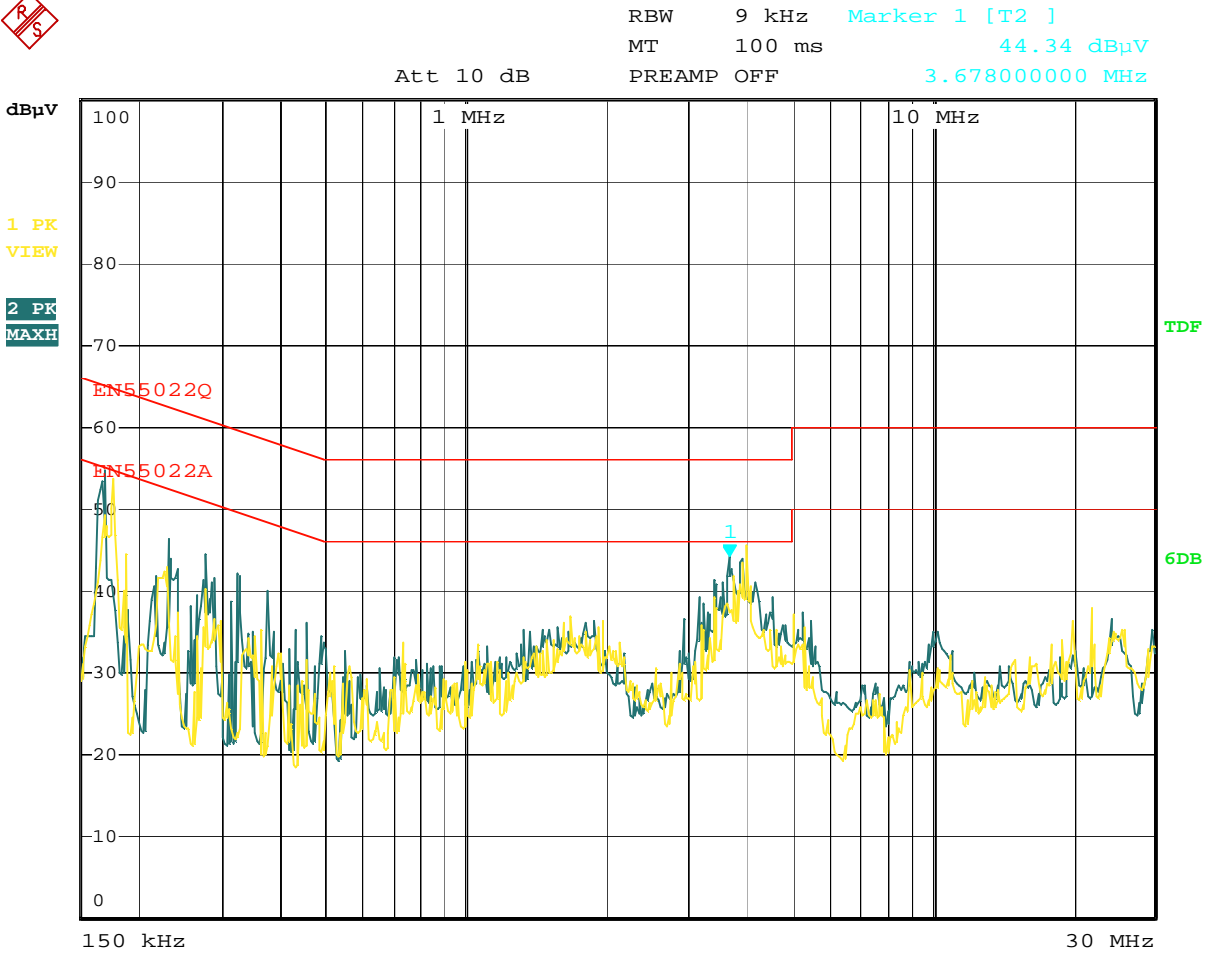
Operating Condition: Charging

Test Site: KMO Laboratory

Operator: Jacky Huang

Test Specification: LINE&NEUTRAL

Comment:



Date: 25.MAY.2009 13:57:05

5. FCC Part 15.247 Requirements for DSSS Systems

5.1 Test Equipment

Please refer to Section 10 this report.

5.2 Test Procedure

Refer to FCC 15.247(a)(2), ANSI C63.4: 2003

6 dB Bandwidth:

- Place the EUT on the table and set it in the transmitting mode.
- Remove the antenna from the EUT and then connect a low loss RF cable from the antenna port to the spectrum analyzer.
- Set the spectrum analyzer as RBW = 100 kHz, VBW = RBW, Span = 50 MHz, Sweep = auto.
- Mark the peak frequency and -6dB (upper and lower) frequency.
- Repeat until all the rest channels are investigated.

Peak Power:

The transmitter output is connected to the test receiver. The test receiver is set to the peak power detection. The power is equal to the reading level on test receiver plus cable loss at the EUT RF output terminal.

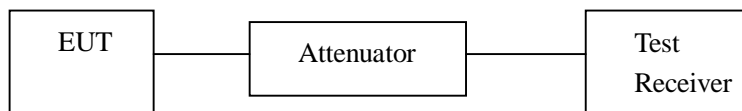
Band Edges Measurement:

- The transmitter output was connected to the spectrum analyzer via a low lose cable.
- Set both RBW and VBW of spectrum analyzer to 100kHz with suitable frequency span including 100kHz bandwidth from band edge.
- The band edges was measured and recorded.

Peak Power Spectral Density:

- The transmitter output is connected to a test receiver, The spectrum analyzer's resolution bandwidth was set at 3kHz RBW and 30kHz VBW as that of the fundamental frequency. Set the sweep time=span/3kHz.
- The power spectral density was measured and recorded.
- The sweep time is allowed to be longer than span/3kHz for a full response of the mixer in the spectrum analyzer.

5.3 Test Setup



5.4 Configuration of the EUT

Same as section 4.4 of this report

5.5 EUT Operating Condition

Same as section 4.5 of this report.

5.6 Limit

According to §15.247(a)(2), systems using digital modulation techniques may operate in the 902 ~ 928 MHz, 2400 ~ 2483.5 MHz, and 5725 ~ 5850 MHz bands. The minimum 6dB bandwidth shall be at least 500 kHz.

According to §15.247(b)(3), for systems using digital modulation in the bands of 902-928 MHz, 2400-2483.5 MHz, and 5725-5850 MHz: 1 Watt.

According to §15.247(b)(4), the conducted output power limit specified in paragraph (b) of this section is based on the use of antennas with directional gains that do not exceed 6 dBi. Except as shown in paragraph (c) of this section, if transmitting antennas of directional gain greater than 6 dBi are used, the conducted output power from the intentional radiator shall be reduced below the stated values in paragraphs (b)(1), (b)(2), and (b)(3) of this section, as appropriate, by the amount in dB that the directional gain of the antenna exceeds 6 dBi.

According to §15.247(d), in any 100 kHz bandwidth outside the frequency bands in which the spread spectrum intentional radiator is operating, the radio frequency power that is produced by the intentional radiator shall be at least 20 dB below that in the 100 kHz bandwidth within the band that contains the highest level of the desired power, based on either an RF conducted or a radiated measurement, provided the transmitter demonstrates compliance with the peak conducted power limits. In addition, radiated emissions which fall in the restricted bands, as defined in §15.205(a), must also comply with the radiated emission limits specified in 15.209(a) (see Section 15.205(c)).

According to §15.247(e), for digitally modulated systems, the power spectral density conducted from the intentional radiator to the antenna shall not be greater than 8 dBm in any 3 kHz band during any time interval of continuous transmission.

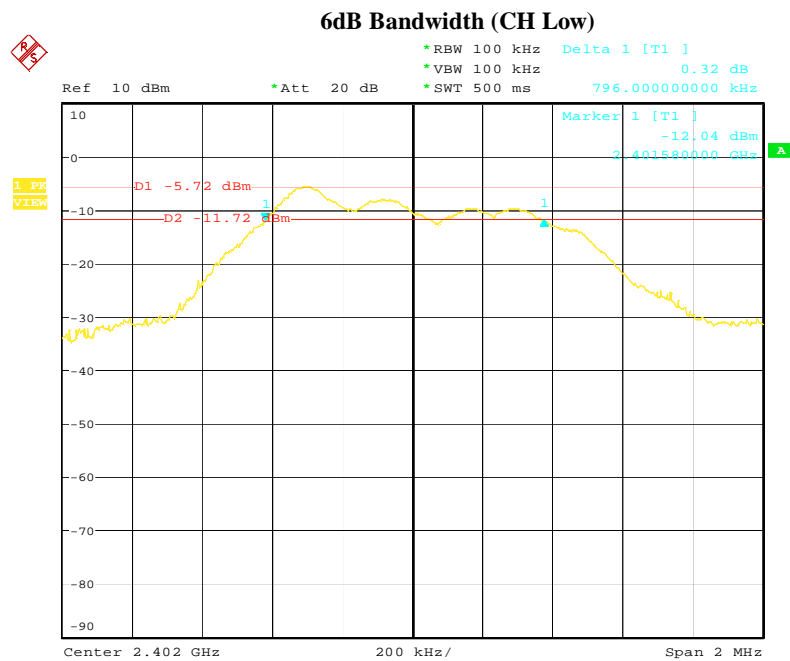
According to §15.247(f), the digital modulation operation of the hybrid system, with the frequency hopping turned off, shall comply with the power density requirements of paragraph (d) of this section.

5. 7 Test Result

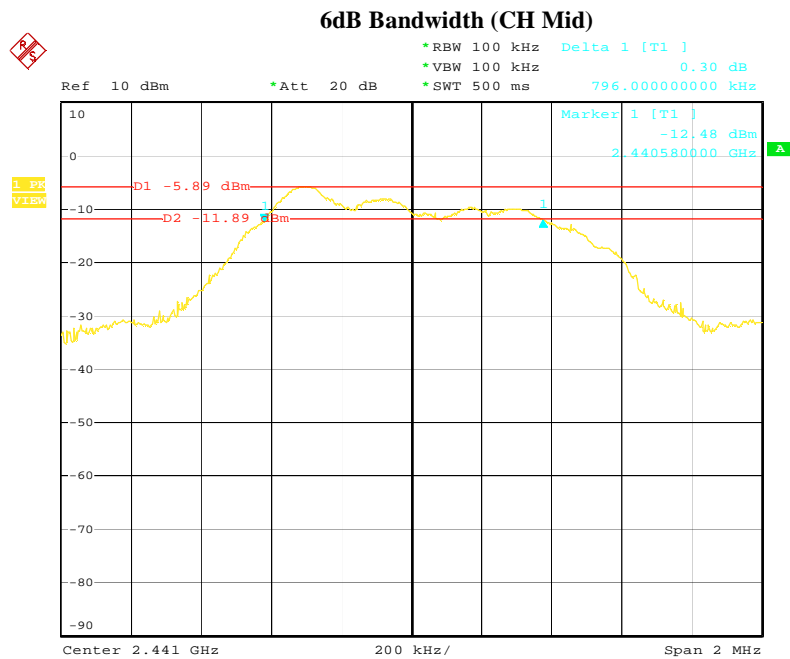
A. 6 dB Bandwidth

Product	: GLIDETV NAVIGATOR	Test Mode	: DSSS
Test Item	: 6 dB BW	Temperature	: 25 °C
Test Voltage	: DC 3.7V	Humidity	: 56%RH
Test Result	: PASS		

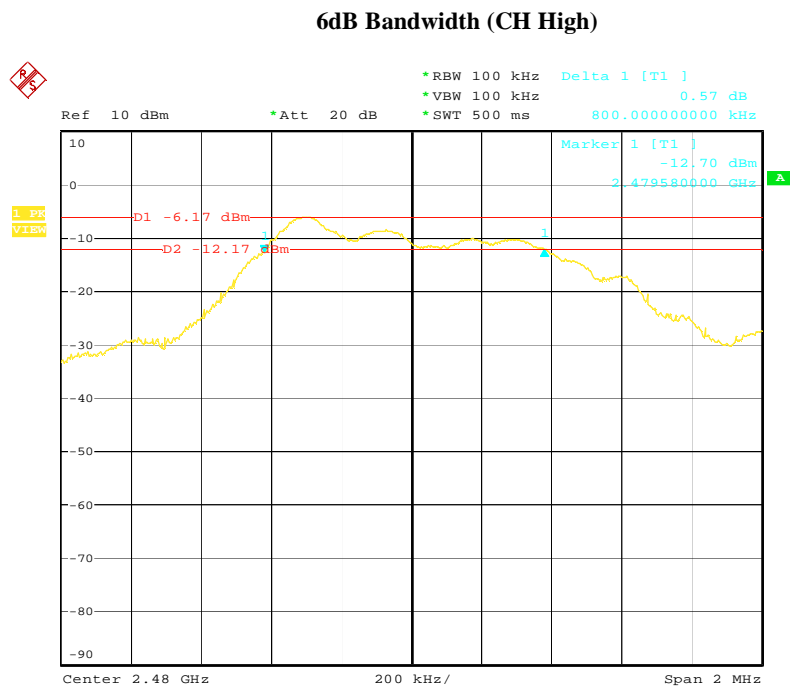
Channel	Frequency (MHz)	Bandwidth (kHz)	FCC Limit (kHz)	Result
Low	2402	796	>500 kHz	PASS
Mid	2441	796		PASS
High	2480	800		PASS



Date: 30.MAY.2009 09:15:57



Date: 30.MAY.2009 09:17:36



Date: 30.MAY.2009 09:20:02

B. Peak Power

Product	: GLIDETV NAVIGATOR	Test Mode	: DSSS
Test Item	: Peak Power	Temperature	: 25 °C
Test Voltage	: DC 3.7V	Humidity	: 56% RH
Test Result	: PASS		

Channel	Frequency (MHz)	Output Power (dBm)	FCC Limit (W/dBm)	Result
Low	2402	-13.85	1.00/30.00	PASS
Mid	2441	-13.92		PASS
High	2480	-13.73		PASS

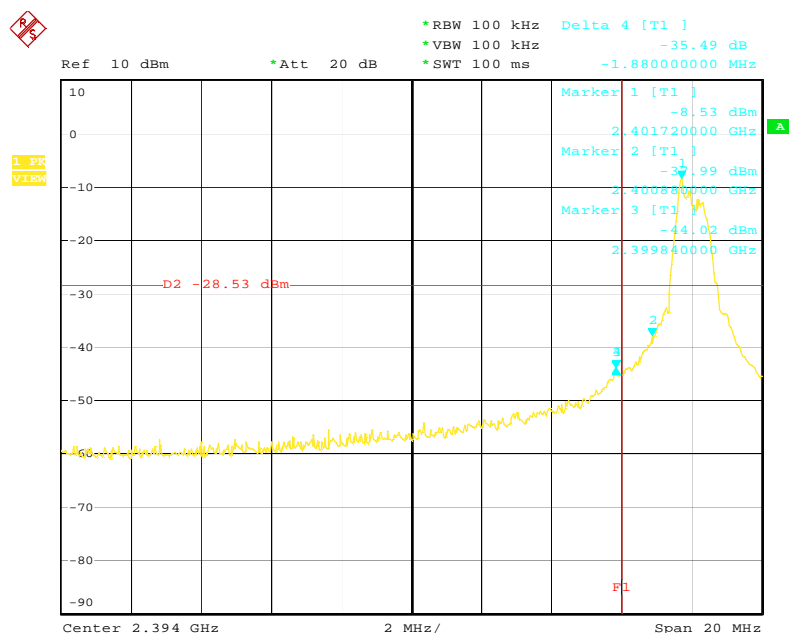
C. Band Edges Measurement

Product	: GLIDETV NAVIGATOR	Test Mode	: CH Low ~ CH High
Test Item	: Band Edges Measurement	Temperature	: 25 °C
Test Voltage	: DC 3.7V	Humidity	: 56% RH
Test Result	: PASS		

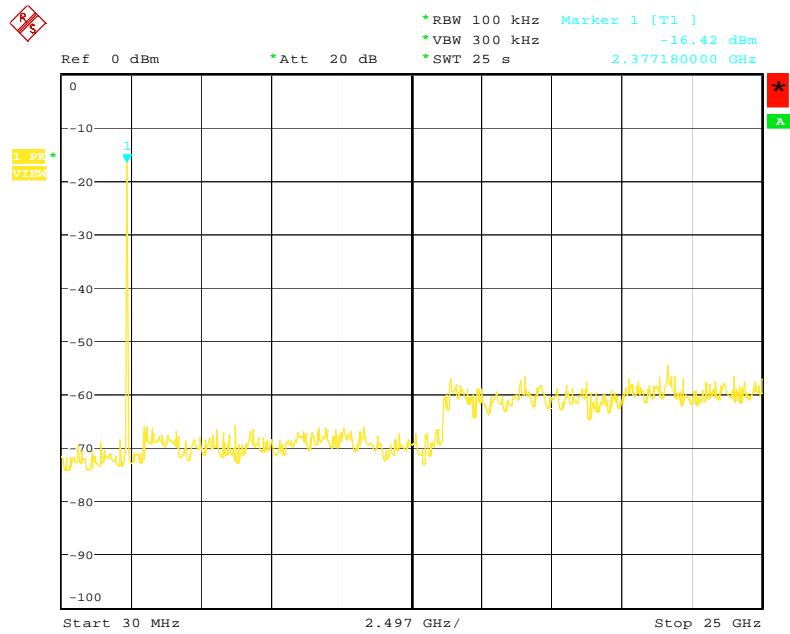
Channel	Detector	Radiated Method Max. Field Strength of Fundamental (dBuV/m)	Conducted Method Between Carrier Max. Power and Local Max. Emission in Restrict Band(dBc)	The Max. Field Strength in Restrict Band (dBuV/m)	Limit @3m (dBuVm) Peak / Average	Margin (dB)
Low	Peak	82.61	35.49	47.12	74.0 / 54.0	-26.88
High	Peak	82.73	41.96	40.77	74.0 / 54.0	-33.23

Note: (1) According to step 2 of Marker-Delta Method DA 00-705 (following plots included).
 (2) According to step 3 of Marker-Delta Method:
 The Max. Field Strength in Restrict Band = Filed Strength of Fundamental – Between Carrier Max Power and Local Max. Emission in Restrict Band
 (3) The average measurement was not performed when the peak measured data under the limit of average detection. If the readings given are average, peak measurement should also be supplied.

Channel: Low

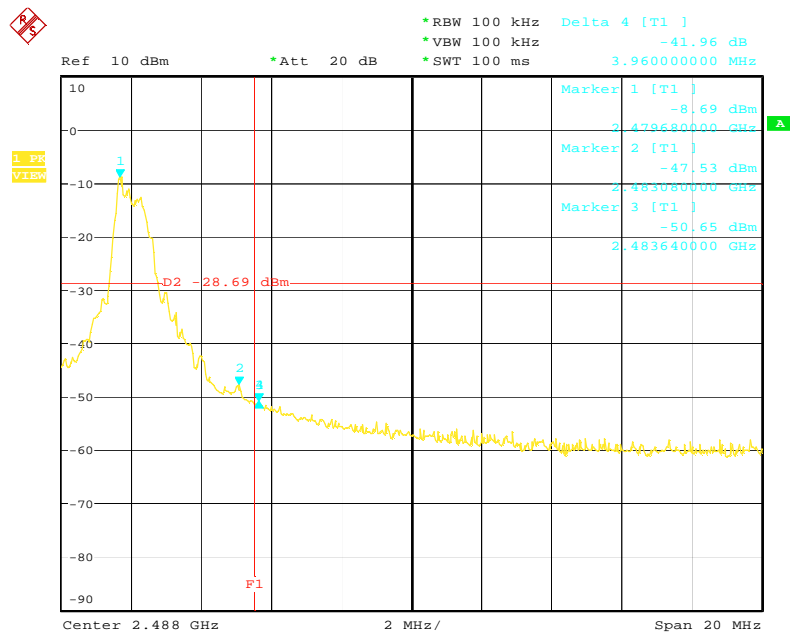


Date: 25.MAY.2009 18:08:57

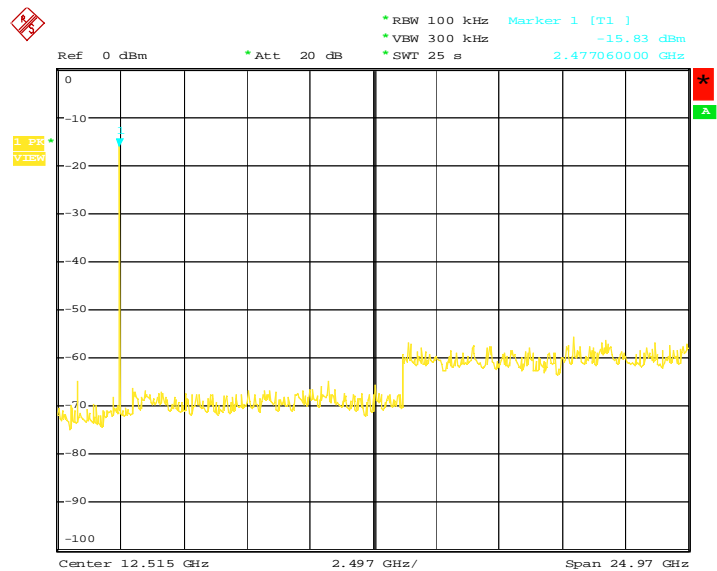


Date: 26.MAY.2009 09:18:30

Channel: High



Date: 25.MAY.2009 18:11:30



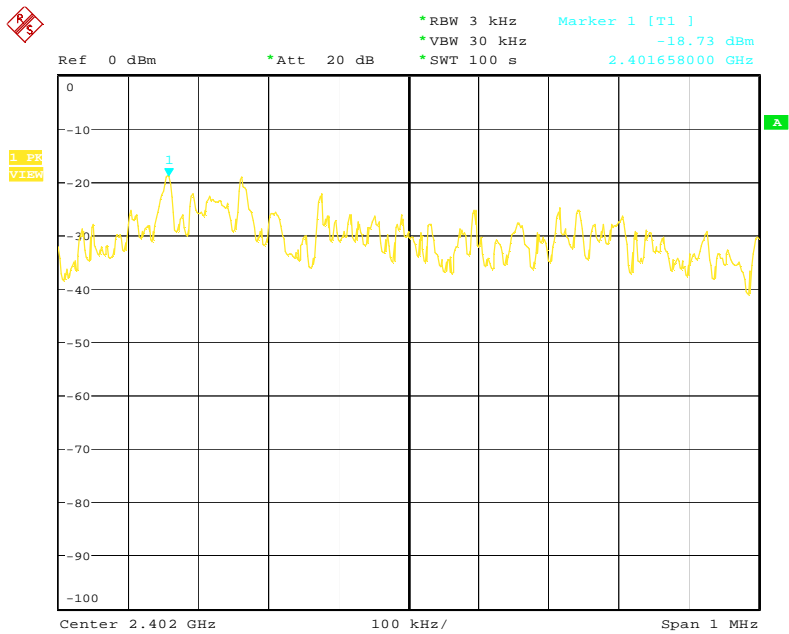
Date: 7.JUN.2009 18:48:07

D. Peak Power Spectral Density

Product	: GLIDETV NAVIGATOR	Test Mode	: CH Low ~ CH High
Test Item	: Peak Power Spectral Density	Temperature	: 25 °C
Test Voltage	: DC 3.7V	Humidity	: 56% RH
Test Result	: PASS		

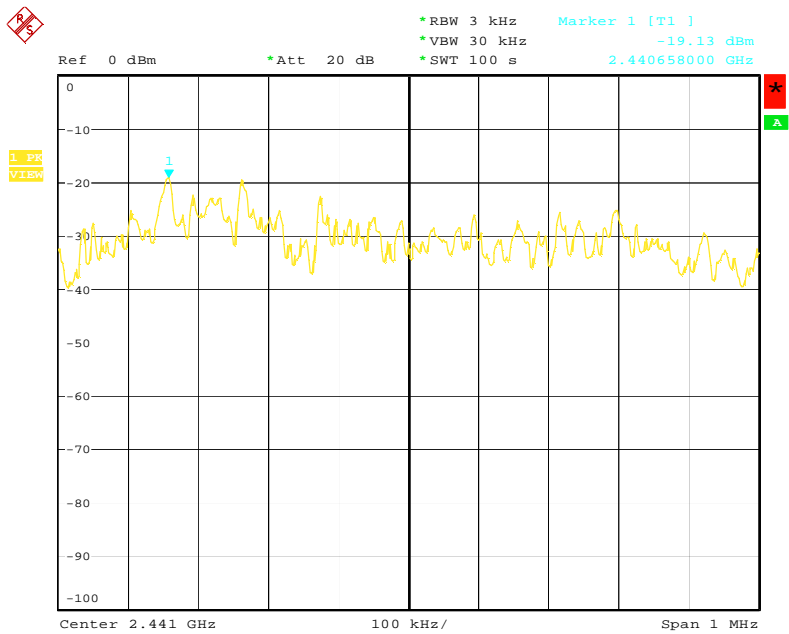
Channel	Frequency (MHz)	PPSD (dBm)	FCC Limit (dBm)	Result
Low	2402	-18.73	8.00	PASS
Mid	2441	-19.13		PASS
High	2480	-20.87		PASS

Channel: Low

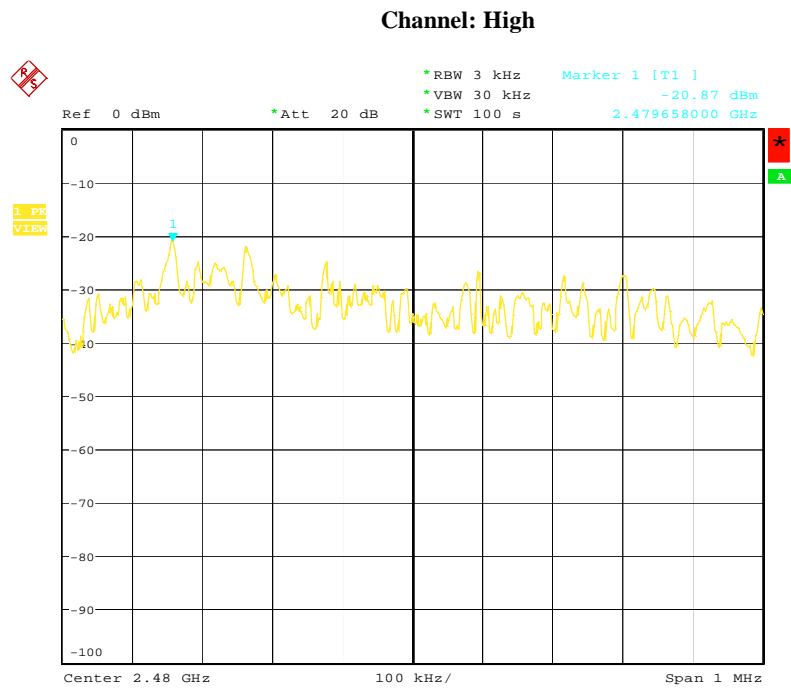


Date: 25.MAY.2009 18:27:01

Channel: Mid



Date: 25.MAY.2009 18:23:24



Date: 25.MAY.2009 18:20:13

6. Transmitter Spurious Radiated Emission at 3 Meters

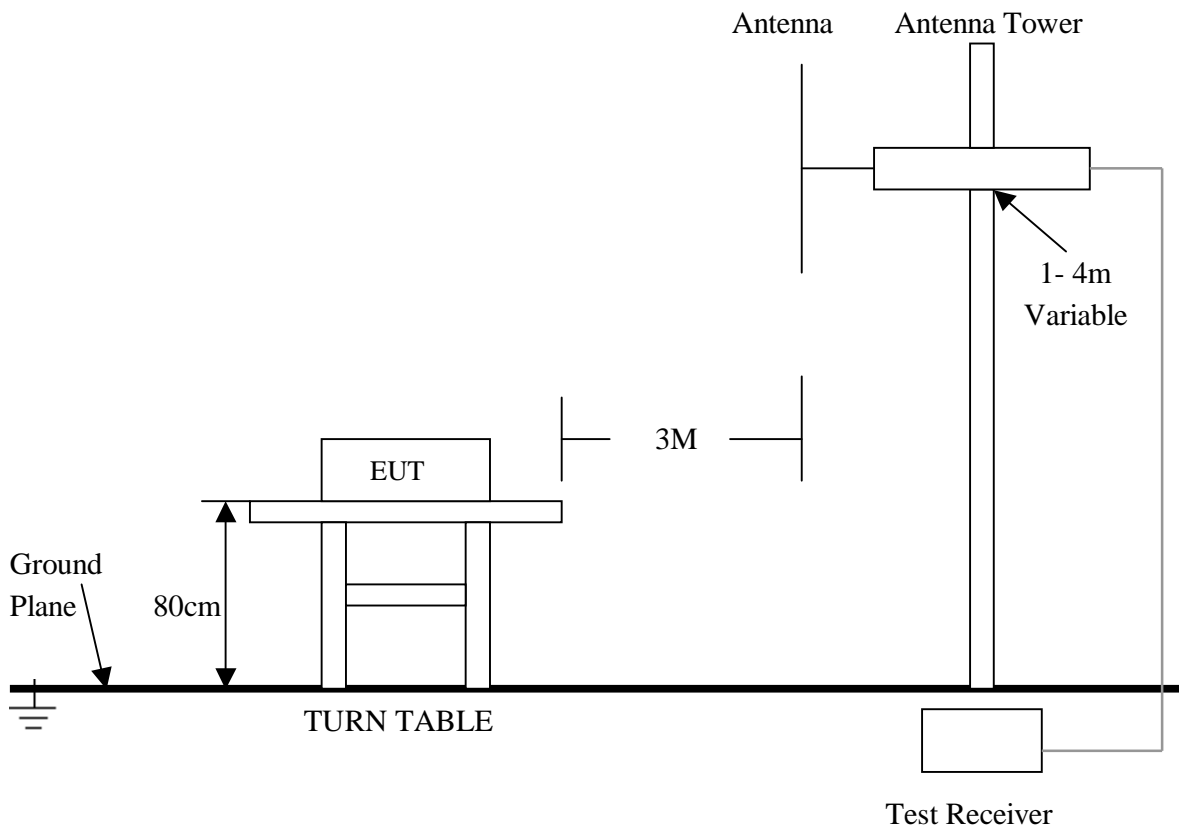
6.1 Test Equipment

Please refer to Section 10 this report.

6.2 Test Procedure

1. The EUT was tested according to ANSI C63.4 - 2003. T
2. The EUT, peripherals were put on the turntable which table size is 1m x 1.5 m, table high 0.8 m. All set up is according to ANSI C63.4-2003.
3. The frequency spectrum from 30 MHz to 1 GHz was investigated. All readings from 30 MHz to 1 GHz are quasi-peak values with a resolution bandwidth of 120 KHz. All readings are above 1 GHz , peak values with a resolution bandwidth of 1 MHz . Measurements were made at 3 meters.
4. The antenna high is varied from 1 m to 4 m high to find the maximum emission for each frequency.
5. Maximizing procedure was performed on the six (6) highest emissions to ensure EUT compliance is with all installation combinations. All data was recorded in the peak detection mode. Quasi-peak readings was performed only when an emission was found to be marginal (within -4 dB of specification limit), and are distinguished with a "QP" in the data table.
6. The antenna polarization: Vertical polarization and Horizontal polarization.

6.3 Test Setup



For the actual test configuration , please refer to the related items – Photos of Testing

6.4 Configuration of the EUT

Same as section 4.4 of this report

6.5 EUT Operating Condition

Same as section 4.5 of this report.

6.6 Limit

In any 100 KHz bandwidth outside the operating frequency band, the radio frequency power that is produced by modulation products of the spreading sequence, the information sequence and the carrier frequency shall be either at least 20 dB below that in any 100 KHz bandwidth within the band that contains the highest level of the desired power or shall not exceed the general levels specified in section 15.209(a), which lesser attenuation.

All other emissions inside restricted bands specified in section 15.205(a) shall not exceed the general radiated emission limits specified in section 15.209(a)

Note:

Applies to harmonics/spurious emissions that fall in the restricted bands listed in section 15.205. The maximum permitted average field strength is listed in section 15.209.

47 CFR § 15.237(c): The emission limits as specified above are based on measurement instrument employing an average detector. The provisions in section 15.35 for limiting peak emissions apply.

FCC CFR 47, Part 15, Subpart C, Para. 15.205(a) – Restricted Frequency Bands

MHz	MHz	MHz	GHz
0.090–0.110	16.42–16.423	399.9–410	4.5–5.15
¹ 0.495–0.505	16.69475–16.69525	608–614	5.35–5.46
2.1735–2.1905	16.80425–16.80475	960–1240	7.25–7.75
4.125–4.128	25.5–25.67	1300–1427	8.025–8.5
4.17725–4.17775	37.5–38.25	1435–1626.5	9.0–9.2
4.20725–4.20775	73–74.6	1645.5–1646.5	9.3–9.5
6.215–6.218	74.8–75.2	1660–1710	10.6–12.7
6.26775–6.26825	108–121.94	1718.8–1722.2	13.25–13.4
6.31175–6.31225	123–138	2200–2300	14.47–14.5
8.291–8.294	149.9–150.05	2310–2390	15.35–16.2
8.362–8.366	156.52475–156.52525	2483.5–2500	17.7–21.4
8.37625–8.38675	156.7–156.9	2655–2900	22.01–23.12
8.41425–8.41475	162.0125–167.17	3260–3267	23.6–24.0
12.29–12.293	167.72–173.2	3332–3339	31.2–31.8
12.51975–12.52025	240–285	3345.8–3358	36.43–36.5
12.57675–12.57725	322–335.4	3600–4400	(²)
13.36–13.41.			

¹ Until February 1, 1999, this restricted band shall be 0.490–0.510 MHz.

² Above 38.6

FCC 47 CFR, Part 15.209(a) – Field Strength Limits within Restricted Frequency Bands

Frequency (MHz)	Field strength (microvolts/meter)	Measurement distance (meters)
0.009–0.490	2400/F(kHz)	300
0.490–1.705	24000/F(kHz)	30
1.705–30.0	30	30
30–88	100**	3
88–216	150**	3
216–960	200**	3
Above 960	500	3

6.7 Test Result

Product	: GLIDETV NAVIGATOR	Test Mode	: DSSS
Test Item	: Spurious Radiated Emissions	Temperature	: 25 °C
Test Voltage	: DC 3.7V	Humidity	: 56%RH
Test Result	: PASS		

Channel: Low

Freq. (MHz)	Emission (dBuV/m) Peak Detector	HORIZ / VERT	Limits (dBuV/m) Peak / Average	Margin (dB)
4804	51.22	HORZ	74.0 / 54.0	-22.78
4804	49.09	VERT	74.0 / 54.0	-24.91
7206	-	HORZ	74.0 / 54.0	
7206	-	VERT	74.0 / 54.0	-
9608	-	HORZ	74.0 / 54.0	-
9608	-	VERT	74.0 / 54.0	-
12010	-	HORZ	74.0 / 54.0	-
12010	-	VERT	74.0 / 54.0	-
14412	-	HORZ	74.0 / 54.0	-
14412	-	VERT	74.0 / 54.0	-

Channel: Mid

Freq. (MHz)	Emission (dBuV/m) Peak Detector	HORIZ / VERT	Limits (dBuV/m) Peak / Average	Margin (dB)
4882	51.64	HORZ	74.0 / 54.0	-22.36
4882	48.83	VERT	74.0 / 54.0	-25.17
7323	-	HORZ	74.0 / 54.0	-
7323	-	VERT	74.0 / 54.0	-
9764	-	HORZ	74.0 / 54.0	-
9764	-	VERT	74.0 / 54.0	-
12205	-	HORZ	74.0 / 54.0	-
12205	-	VERT	74.0 / 54.0	-
14646	-	HORZ	74.0 / 54.0	-
14646	-	VERT	74.0 / 54.0	-

Channel: High

Freq. (MHz)	Emission (dBuV/m) Peak Detector	HORIZ / VERT	Limits (dBuV/m) Peak / Average	Margin (dB)
4960	51.87	HORZ	74.0 / 54.0	-22.13
4960	50.05	VERT	74.0 / 54.0	-23.95
7440	-	HORZ	74.0 / 54.0	-
7440	-	VERT	74.0 / 54.0	-
9920	-	HORZ	74.0 / 54.0	-
9920	-	VERT	74.0 / 54.0	-
12400	-	HORZ	74.0 / 54.0	-
12400	-	VERT	74.0 / 54.0	-
14880	-	HORZ	74.0 / 54.0	-
14880	-	VERT	74.0 / 54.0	-

- Note:**
- (1) All Reading Levels below 1GHz are Quasi-Peak, above are peak and average value.
 - (2) Emission Level = Reading Level + Probe Factor + Cable Loss.
 - (3) Receiver setting (Peak Detector) : RBW=1MHz; VBW=1MHz; Span=100MHz
 - (4) Receiver setting (AVG Detector): RBW=1MHz; VBW=30Hz; Span=20MHz
 - (5) The average measurement was not performed when the peak measured data under the limit of average detection. If the readings given are average, peak measurement should also be supplied.
 - (6) Where an emission level is indicated by a -, levels had a margin greater than 20 dB when compared to the limit.

Channel: High – Rx mode

Freq. (MHz)	Emission (dBuV/m) QP Detector	HORIZ / VERT	Limits (dBuV/m)	Margin (dB)
52.68	19.68	HORZ	40.0	-20.32
82.36	20.15	VERT	40.0	-19.85
136.35	24.36	HORZ	43.5	-19.14
151.24	25.43	VERT	43.5	-18.07
315.68	23.15	HORZ	46.0	-22.85
268.75	25.57	VERT	46.0	-20.43

Note: (1) All Readings below 1GHz are Quasi-Peak, above are performed with peak and/or average measurements as necessary.
(2) Emission Level = Reading Level + Probe Factor + Cable Loss.

7. RF Exposure Requirements

7.1 Test Equipment

Please refer to Section 10 this report.

7.2 Limit

According to FCC 15.247(i), Systems operating under provisions of this section shall be operated in a manner that ensures that the public is not exposed to radio frequency energy levels in excess of the Commissions guidelines.

FCC 1.1310: The criteria listed in the following table shall be used to evaluate the environmental impact of human exposure to radio-frequency (RF) radiation as specified in 1.1307(b)(1) of this chapter.

TABLE 1—LIMITS FOR MAXIMUM PERMISSIBLE EXPOSURE (MPE)

Frequency range (MHz)	Electric field strength (V/m)	Magnetic field strength (A/m)	Power density (mW/cm ²)	Averaging time (minutes)
(A) Limits for Occupational/Controlled Exposures				
0.3–3.0	614	1.63	*(100)	6
3.0–30	1842/f	4.89/f	*(900/f ²)	6
30–300	61.4	0.163	1.0	6
300–1500			f/300	6
1500–100,000			5	6
(B) Limits for General Population/Uncontrolled Exposure				
0.3–1.34	614	1.63	*(100)	30
1.34–30	824/f	2.19/f	*(180/f ²)	30
30–300	27.5	0.073	0.2	30
300–1500			f/1500	30
1500–100,000			1.0	30

f = frequency in MHz

* = Plane-wave equivalent power density

NOTE 1 TO TABLE 1: Occupational/controlled limits apply in situations in which persons are exposed as a consequence of their employment provided those persons are fully aware of the potential for exposure and can exercise control over their exposure. Limits for occupational/controlled exposure also apply in situations when an individual is transient through a location where occupational/controlled limits apply provided he or she is made aware of the potential for exposure.

NOTE 2 TO TABLE 1: General population/uncontrolled exposures apply in situations in which the general public may be exposed, or in which persons that are exposed as a consequence of their employment may not be fully aware of the potential for exposure or can not exercise control over their exposure.

IC Safety Code 6, Section 2.2.1 (a) A person other than an RF and microwave exposed worker shall not be exposed to electromagnetic radiation in a frequency band listed in Column 1 of Table 5, if the field strength exceed the value given in Column 2 or 3 of Table 5, when averaged spatially and over time, or if the power density exceeds the value give in Column 4 of Table 5, when averaged spatially and over time.

Table 5 Exposure Limits for Persons Not Classed As RF and Microwave Ex-posed Workers (Including the General Public)

1 Frequency (MHz)	2 Electric Field Strength; rms (V/m)	3 Magnetic Field Strength; rms (A/m)	4 Power Density (W/m ²)	5 Averaging Time (min)
0.003-1	280	2.19		6
1-10	280/f	2.19/f		6
10 - 30	28	2.19/f		6
30-300	28	0.073	2*	6
300-1 500	1.585f ^{0.5}	0.0042f ^{0.5}	f/150	6
1 500-15 000	61.4	0.163	10	6
15 000-150 000	61.4	0.163	10	616 000 /f ^{1.2}
150 000-300 000	0.158f ^{0.5}	4.21x 10 ⁻⁴ f ^{0.5}	6.67 x 10 ⁻⁵ f	616 000 /f ^{1.2}

* Power density limit is applicable at frequencies greater than 100 MHz.

Notes:

1. Frequency, f, is in MHz.
2. A power density of 10 W/m² is equivalent to 1 mW/cm².
3. A magnetic field strength of 1 A/m corresponds to 1.257 microtesla (μT) or 12.57 milligauss (mG).

7.3 Test Result

Product : GLIDETV NAVIGATOR
 Test Item : RF Exposure
 Test Voltage : DC 3.7V
 Test Result : **PASS**

Test Mode : DSSS
 Temperature : 25 °C
 Humidity : 56%RH

Evaluation of RF Exposure Compliance Requirements	
MPE Prediction of MPE according to equation from page 19 of OET Bulletin 65, Edition 97-01	
RF Exposure Requirements	Compliance with FCC Rules
<p>S=PG/4πR²</p> <p>Where: S=Power density P=Power input to antenna G=Power gain of the antenna relative to an isotropic radiator R=Distance to the center of radiation of the antenna</p> <p>The power density in units of mW/cm² is converted to units of W/m² by multiplying by a factor of 10.</p>	<p>Maximum output power at antenna input terminal: -13.73 dBm= 0.0424 mW Prediction distance: 20 cm Antenna gain : 1.16dBi Prediction frequency: 2480MHZ. MPE limit for uncontrolled exposure at prediction frequency: 1.0 mW/cm²</p> <p>Power density at 20 cm:</p> <p>Antenna: 9.79 x 10⁻⁶ mW/cm²</p>

8. Photos of Testing

8. 1 EUT Test Photographs

Conducted emission test view



Radiated emission test view



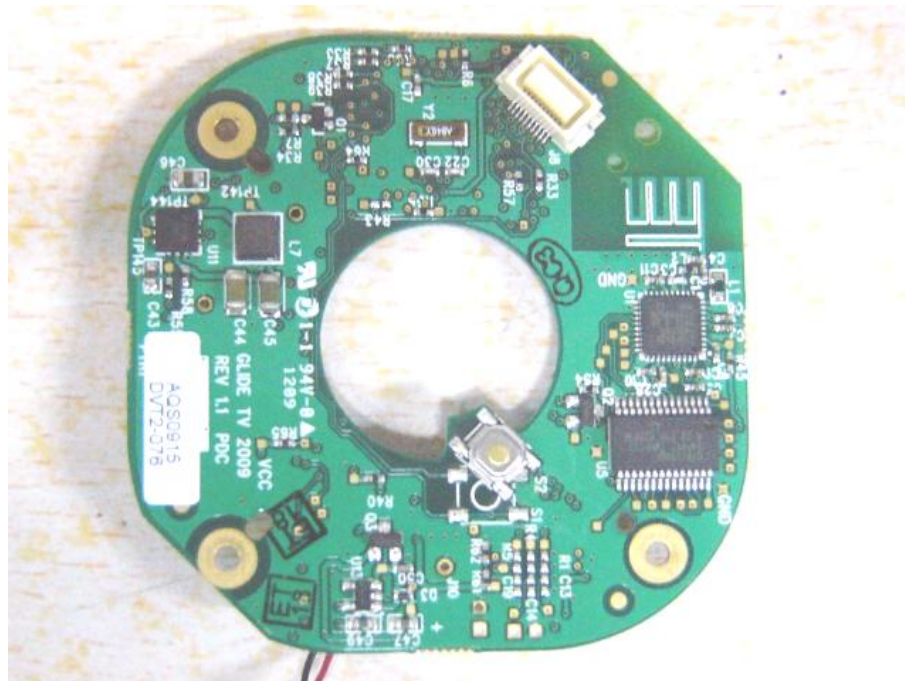
A black, diamond-shaped portable media player with a central screen and various control buttons. The device has a sleek, rounded design. At the top, there is a small orange and black button. Below it, a row of three buttons: a minus sign, a speaker icon with an 'x', and a plus sign. The central screen is rectangular and currently displays a dark, textured background. To the left of the screen is a circular power button with a power symbol. To the right is a circular button with a play/pause symbol. Below the screen, there is a row of three buttons: a double left arrow, a right arrow, and a double right arrow. The device is resting on a light-colored, textured surface.

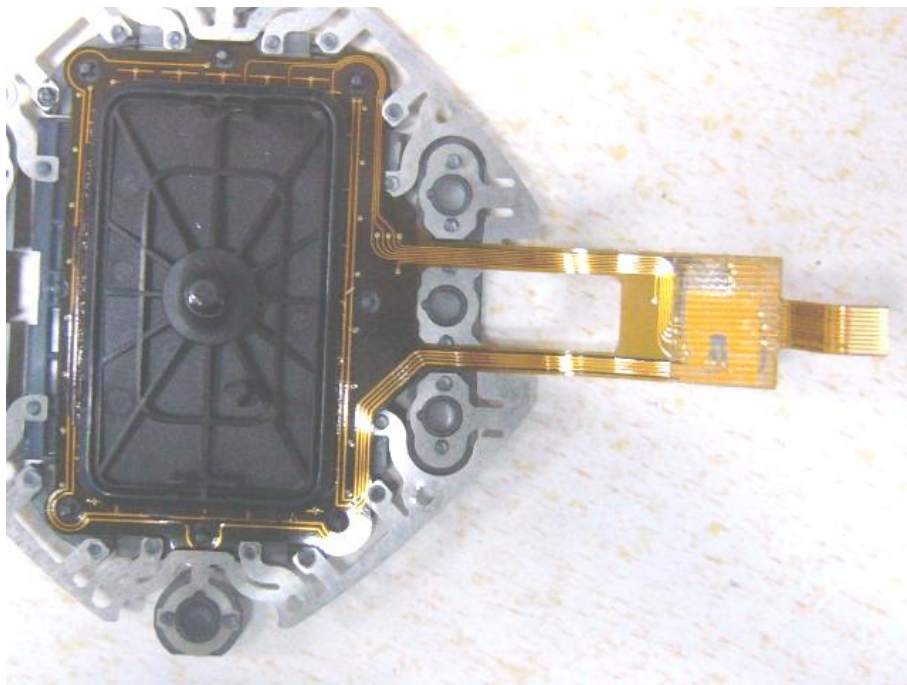
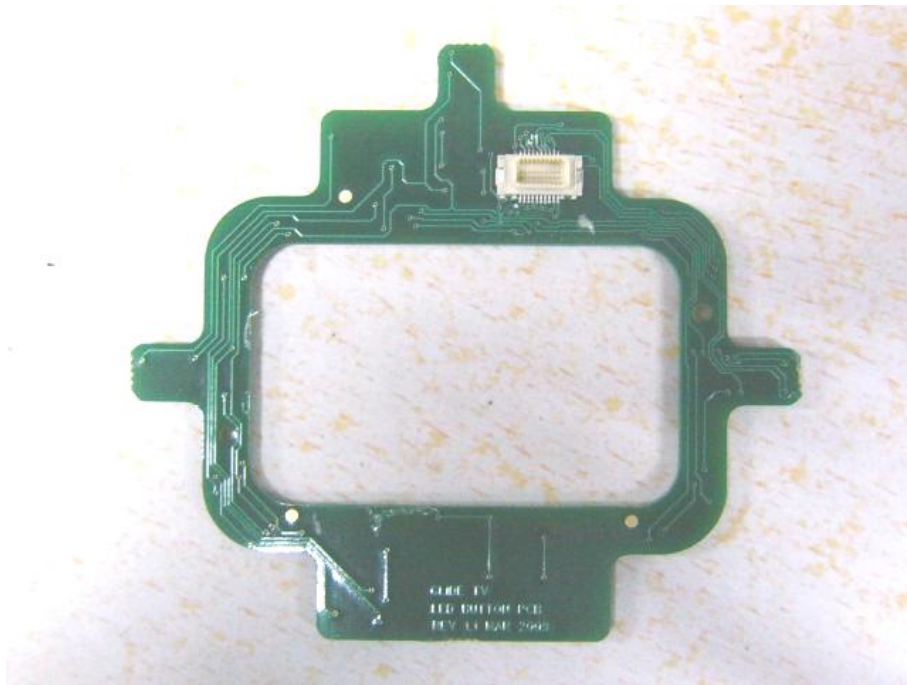
[illegible]

EUT inside whole view

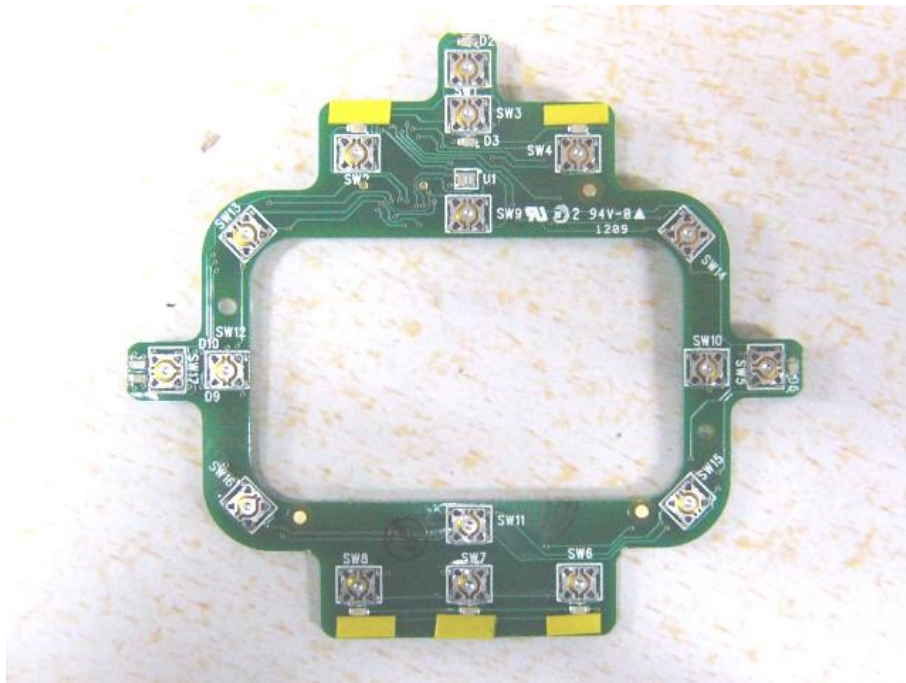


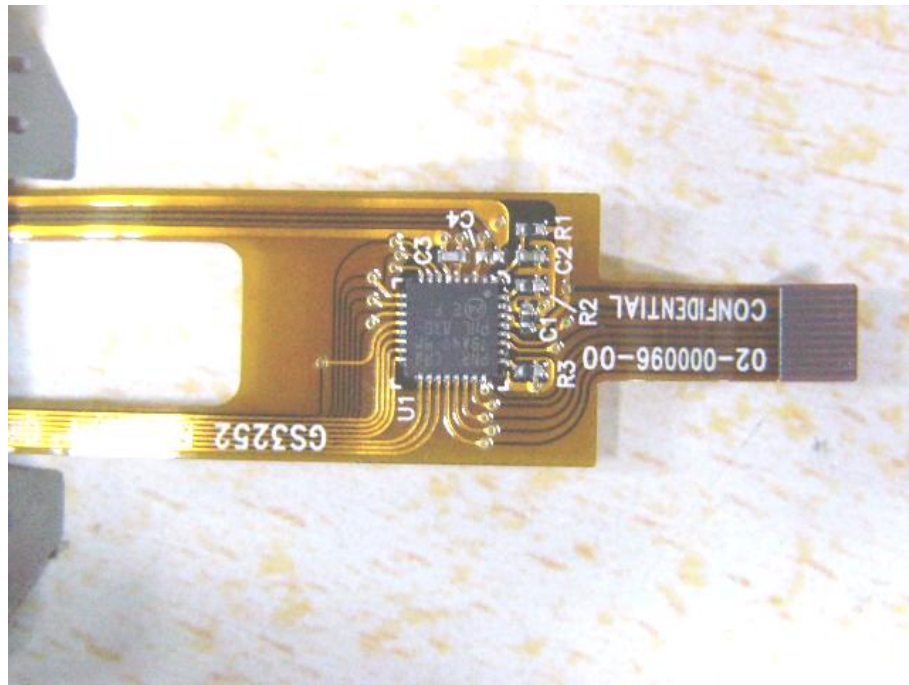
Main & RF board component side





Main & RF board solder side





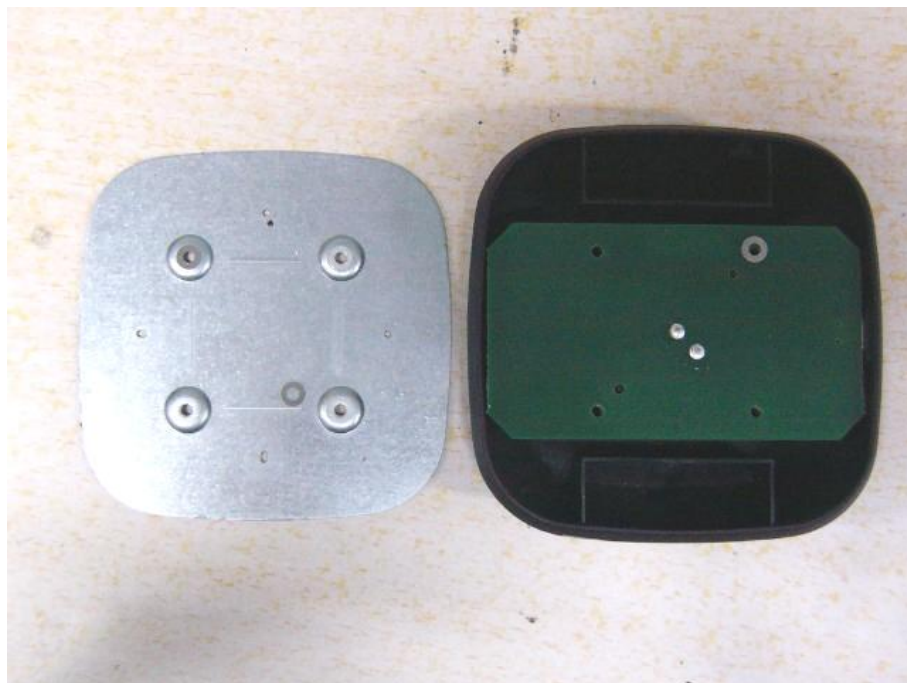
Charger top view



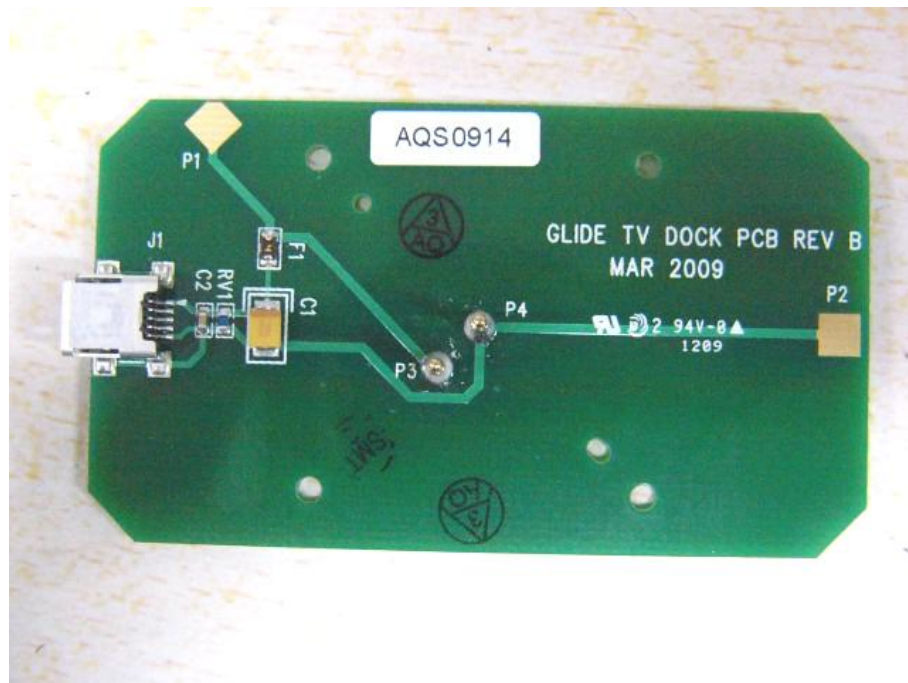
Charger bottom view



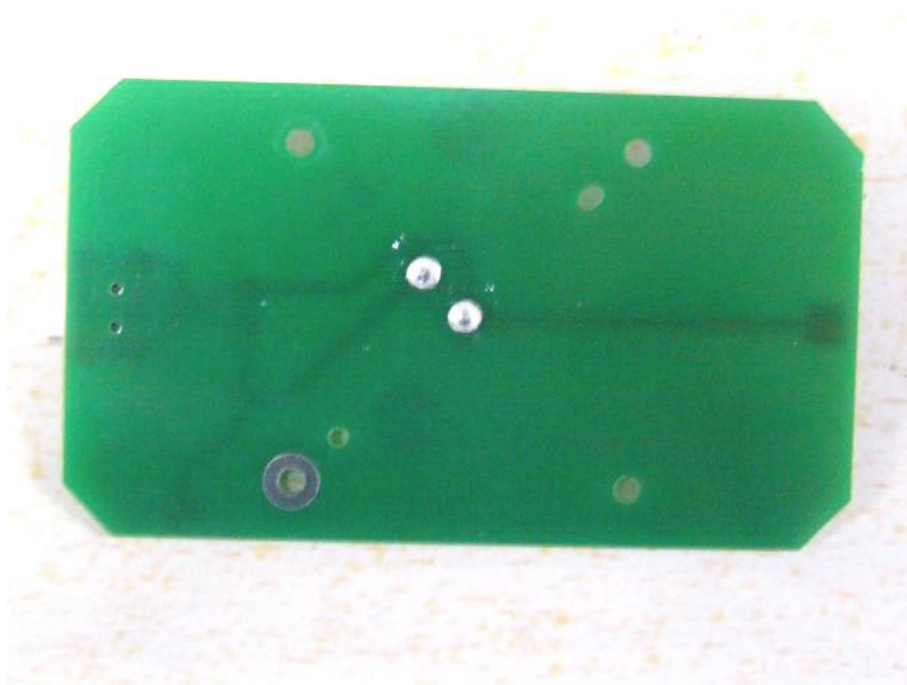
Charger inside whole view



Charger board component side



Charger board solder side



9. FCC ID Label

FCC ID: XGYGTV-100

This device complies with Part 15 of the FCC Rules. Operation is subject to the following two conditions: (1) this device may not cause harmful interference, and (2) this device must accept any interference received, including interference that may cause undesired operation.

The Label must not be a stick-on paper label. The Label on these products must be permanently affixed to the product and readily visible at the time of purchase and must last the expected lifetime of the equipment not be readily detachable.

GLIDETV INC.

Model No.: GTV-100

IC: 8416A-GTV100

The following note shall be conspicuously placed in the users manual: **“Operation is subject to the following two conditions: (1) this device may not cause interference, and (2) this device must accept any interference, including interference that may cause undesired operation of this device.”**

The Label must not be a stick-on paper label. The Label on these products must be permanently affixed to the product and readily visible at the time of purchase and must last the expected lifetime of the equipment not be readily detachable.

Proposed Label Location on EUT

EUT Bottom View/Proposed FCC&IC ID Label Location



10. Test Equipment

The following test equipments were used during the radiated & conducted emission test:

Equipment/ Facilities	Manufacturer	Model #	Serial No.	Due Date
Turntable	SinTek	N/A	N/A	NCR
Antenna Tower	SinTek	N/A	N/A	NCR
OATS	SinTek	N/A	N/A	Oct. 9, 2010
Bilog Antenna	SCHAFFNER	CBL6111C	2775	June 12, 2009
Pre-Amplifier	HP	8449B	3008B00965	June 12, 2009
Horn Antenna	EMCO	3115	9602-4659	June 12, 2009
Horn Antenna	Rohde & Schwarz	AT4560	SB3435/03	May 4, 2010
EMI Test Receiver	Rohde & Schwarz	ESPI7	100013	July 09, 2009
Spectrum Analyzer	Rohde & Schwarz	FSP40	100273	Sep.18, 2009
Signal Generator	FLUKE	PM5418+Y/C	LO747012	Feb.10, 2010
Signal Generator	FLUKE	PM5418TX	LO738007	Feb.10, 2010
Loop Antenna	SCHWARZBECK	FMZB1516	113	Jan. 30, 2010
Loop Antenna	Rohde & Schwarz	HFH2-Z2	872096/16	Jan. 30, 2010
Trilog-Super Broadband Antenna	SCHWARZBECK	VULB9161	9161-4079	Sep.18, 2009
Trilog-Super Broadband Antenna	SCHWARZBECK	VULB9161	9161-4080	Sep.18, 2009
Broad-Band Horn Antenna	SCHWARZBECK	BBHA 9120D	9120D-564	Sep.18, 2009
Broad-Band Horn Antenna	SCHWARZBECK	BBHA 9120D	9120D-565	Sep.18, 2009
Ultra Broadband Antenna	Rohde & Schwarz	HL 562	100110	June.05, 2010
AMN	Rohde & Schwarz	ESH3-Z5	100196	Oct. 23, 2009
AMN	Rohde & Schwarz	ESH3-Z5	100197	Oct. 23, 2009
Pulse Limiter	Rohde & Schwarz	ESH3-Z2	N/A	N/A
Absorbing Clamp	Rohde & Schwarz	MDS-21	N/A	Oct. 29,2009
KMO Shielded Room	KMO	KMO-001	N/A	N/A
Coaxial Cable with N-Connectors	SCHWARZBECK	AK9515H	95549	Sep.18, 2009
Power Meter	Rohde & Schwarz	NRVD	100041	Feb.10, 2010
Radio Communication Test Set	Rohde & Schwarz	CMS 54	846621/024	Feb.10, 2010
Modulation Analyzer	Hewlett-Packard	8901B	2303A00362	Feb.10, 2010
SOHO Telephone Switching System	IKE	2000-108C	N/A	Feb.10, 2010
Temperature Chamber	TABAI	PSL-4GTW	N/A	Feb.10, 2010