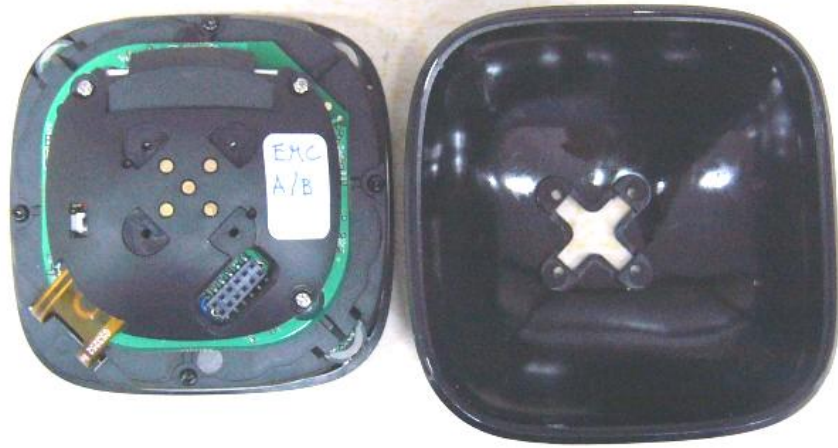
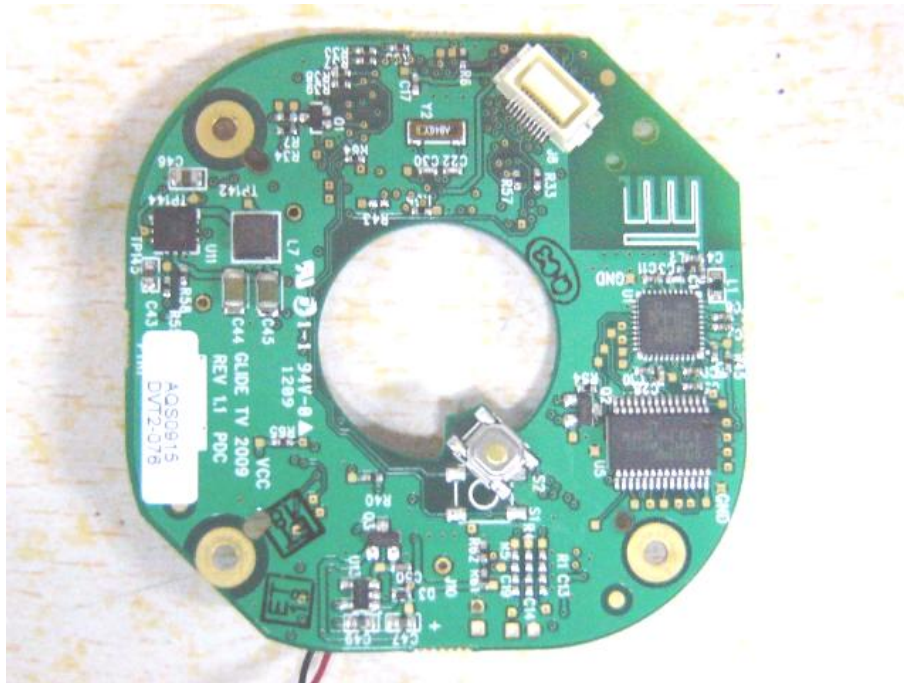
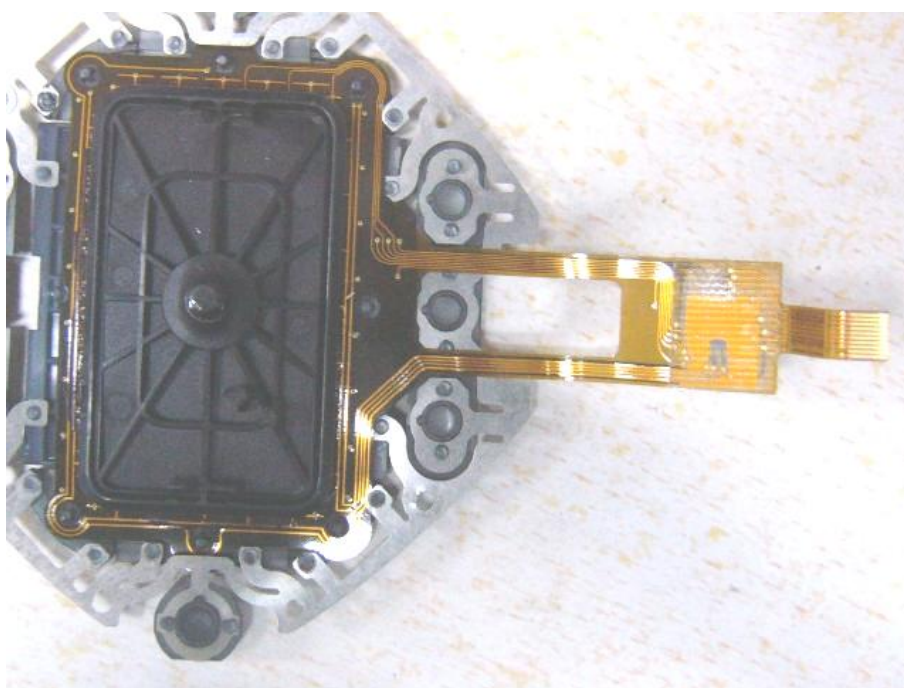
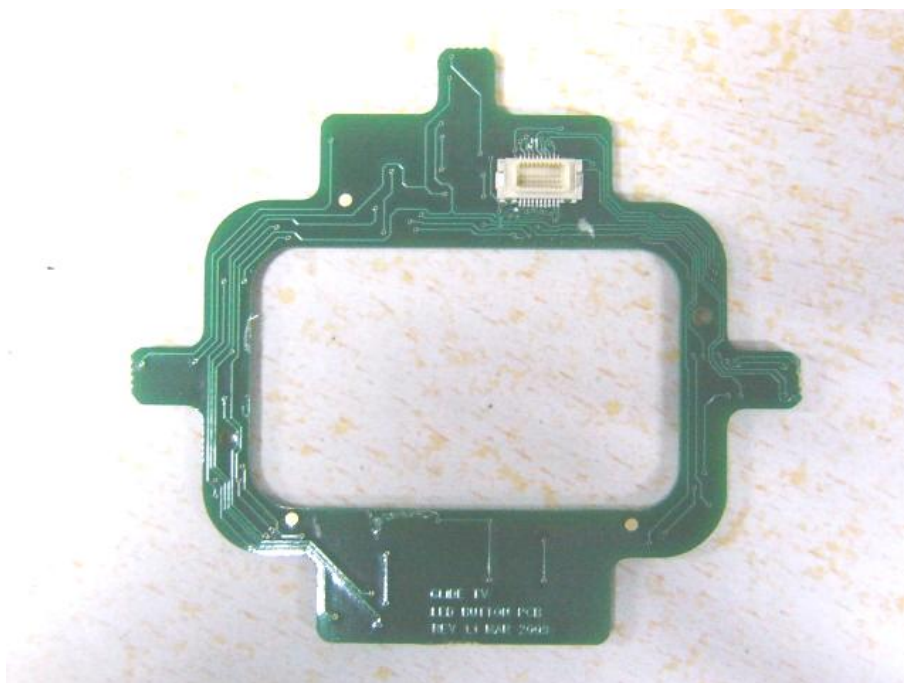


EUT inside whole view

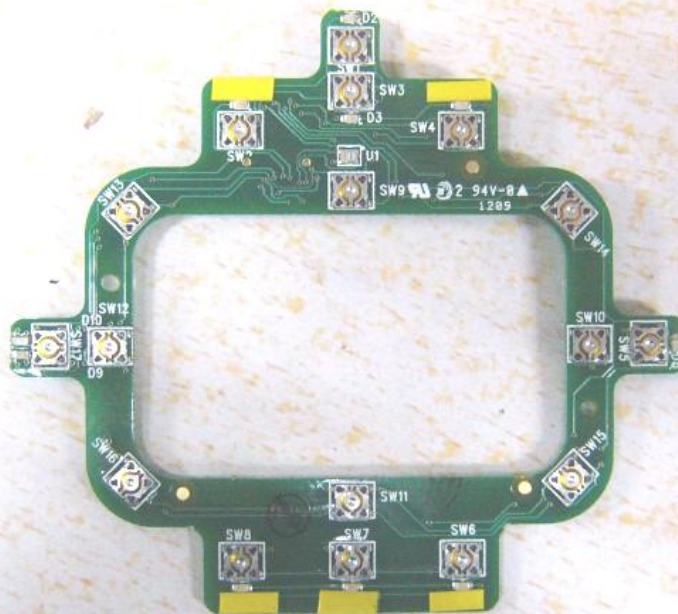


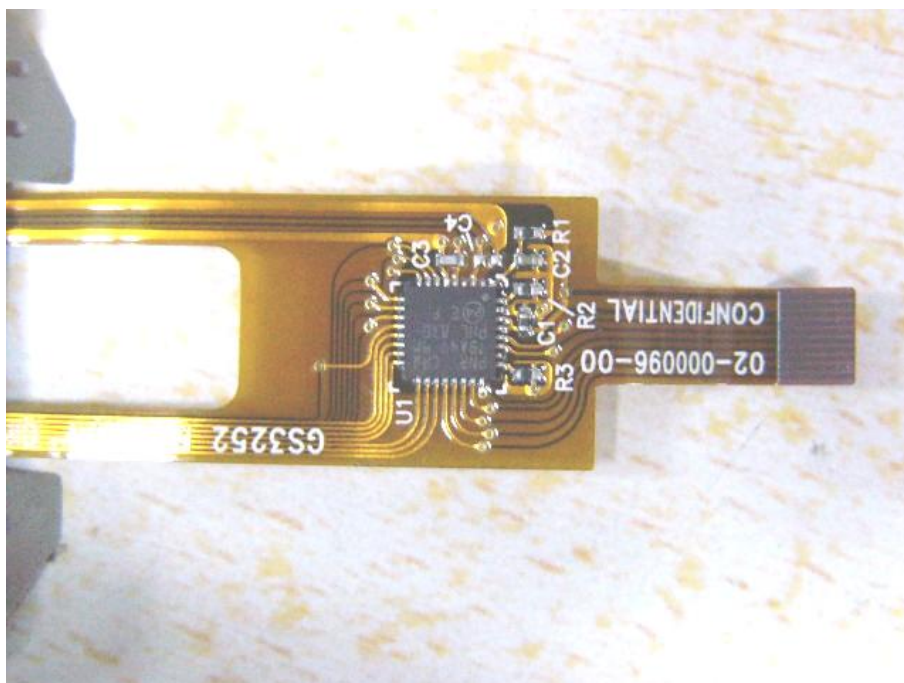
Main & RF board component side



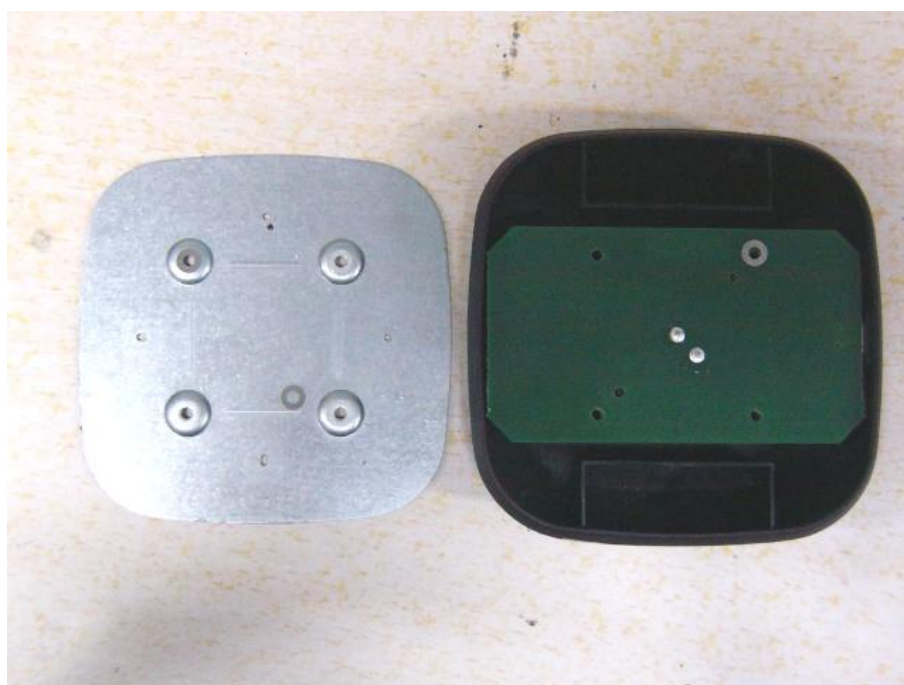


Main & RF board solder side





Charger inside whole view



The image shows a green PCB with the following components and labels:

- Connectors:** A USB connector labeled J1 on the left edge.
- Passive Components:** A fuse labeled F1, two capacitors labeled C1 and C2, and a voltage regulator labeled P3.
- Test Points:** Labeled P1, P2, and P4.
- Text Labels:**
 - A white label at the top center reads "AQS0914".
 - Text on the right side reads "GLIDE TV DOCK PCB REV B" and "MAR 2009".
 - Text near the voltage regulator reads "2 94V-8" and "1209".
- Markings:** There are circular markings with "AO" inside, and "SMT" is printed on the board.

A green rectangular circuit board with two small white components in the center and several circular holes.