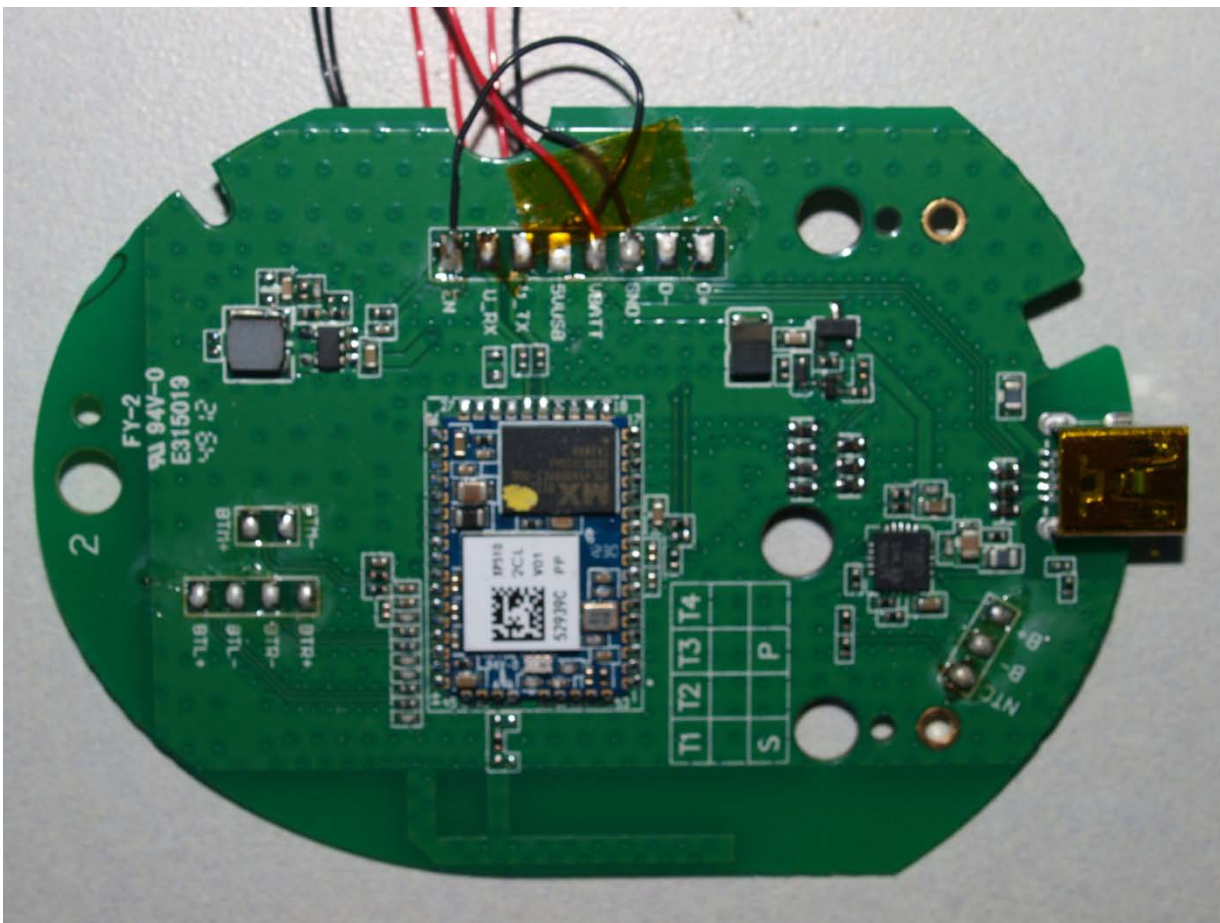


## XP510 BT Section



BT PCB Top View for XP510:



PX51-XP510 RX BT  
(C) 2012 UTEB, INC.  
309000115108R1

5V USB  
VBATT  
GND

REG. EN  
BT1 RX  
BT1 TX

MIC MUTE  
BT1 BT  
BT1 BT  
BT1 BT

BT1 MIC+  
BT1 MIC-  
BT1SPK\_L+  
BT1SPK\_L-  
BT1SPK\_R+  
BT1SPK\_R-

TP23  
BT1  
MIC

2

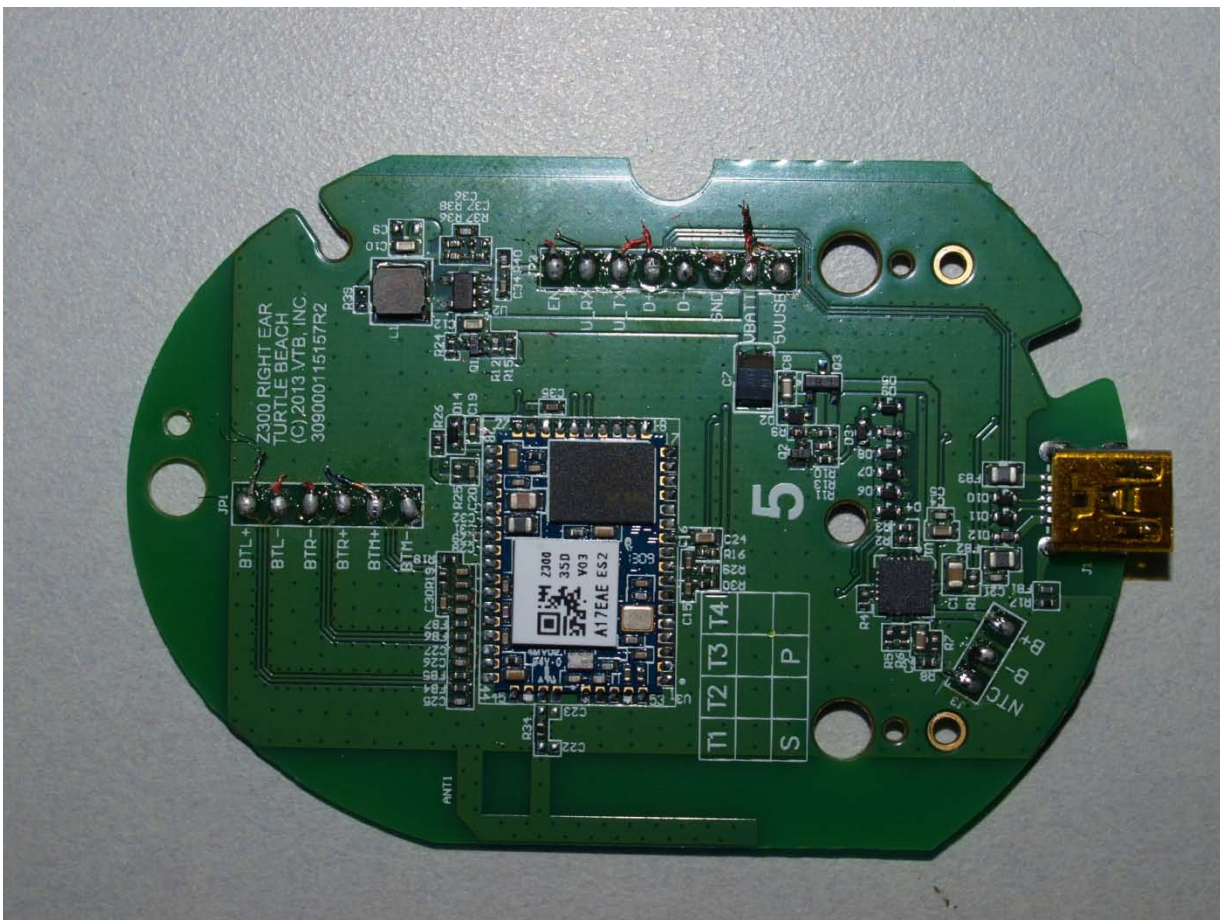
Please note that the red and black wires are not part of the device. These were needed to place the BT radio into specific RF test modes and were not removed.



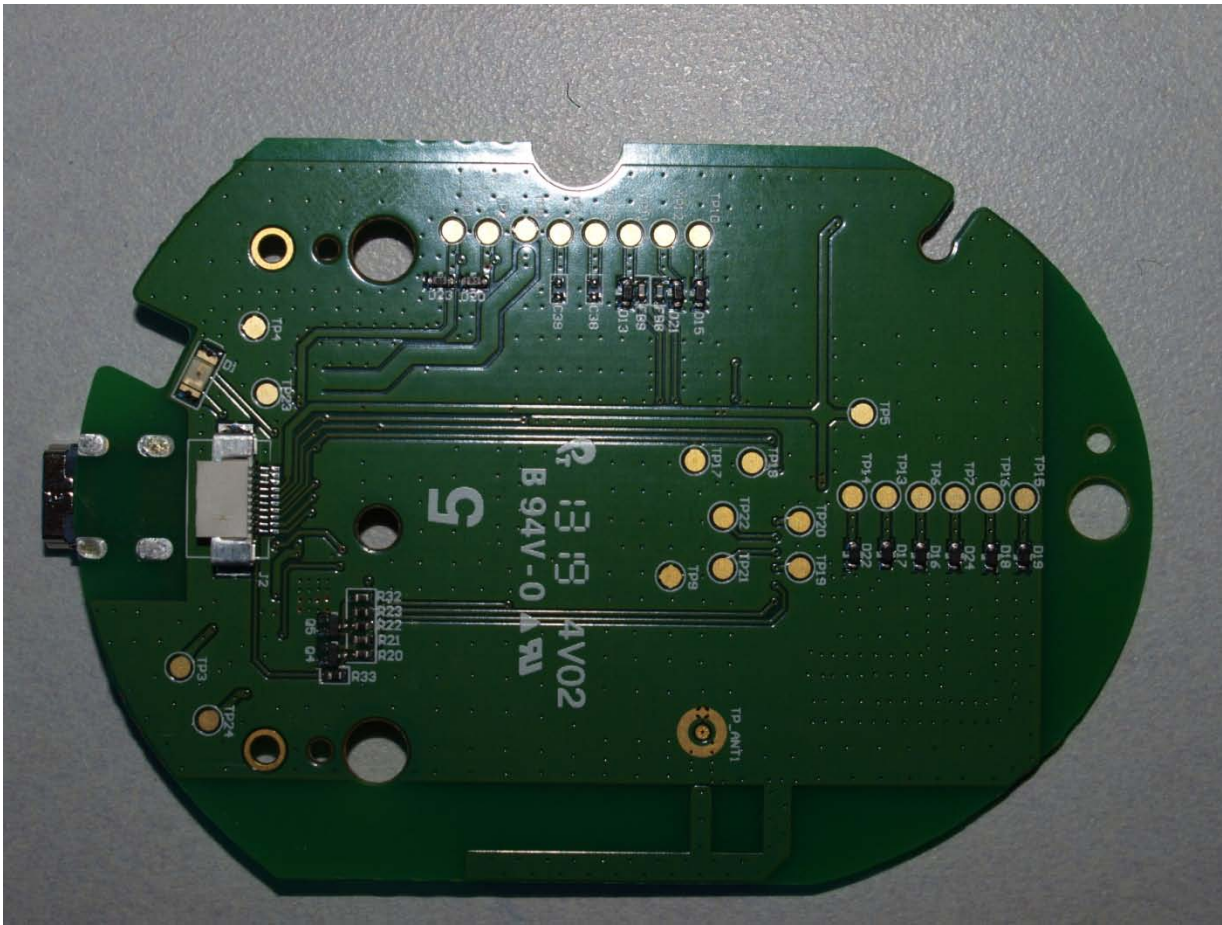
## Z300 BT Section



BT PCB Top View for Z300:



**BT PCB Bottom View for Z300:**



**Voyetra Turtle Beach, Inc. hereby attests that the BT portion of the Ear Force Z300 RX device and the XP510 RX device are electrically and mechanically identical in every aspect of the design.**

**Sincerely,**

**Signature:**

*Tim Blaney*

**Name:** Tim Blaney

**Title:** Compliance  
Manager

**Company:** Voyetra Turtle Beach, Inc.

**Address:** 100 Summit Lake Drive, Suite 100

Valhalla, New York 10595 USA