

## 1.1 Internal Photos



Figure 1: Internal Photo of Stealth700P-MAX-RX with Plastic Cover Removed

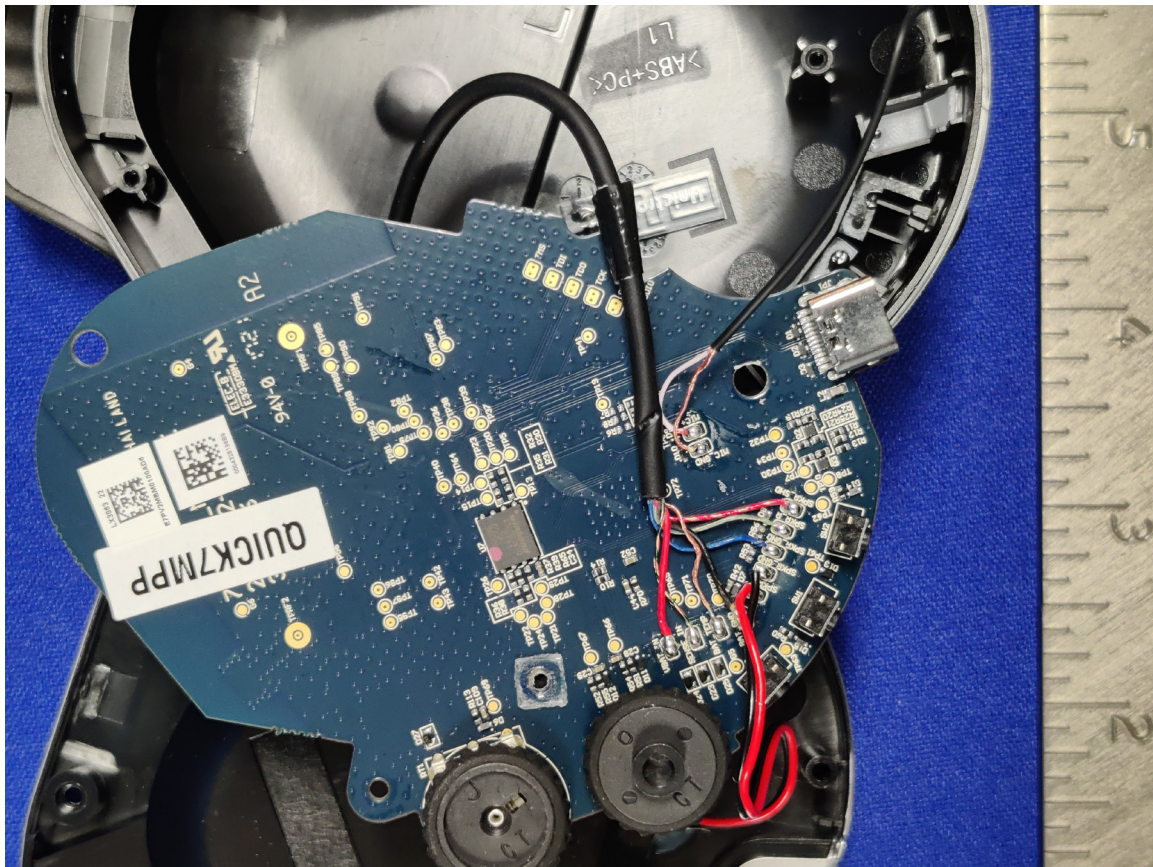


Figure 2: Internal Photo of Stealth700P-MAX-RX – Top PCB (Left Ear)



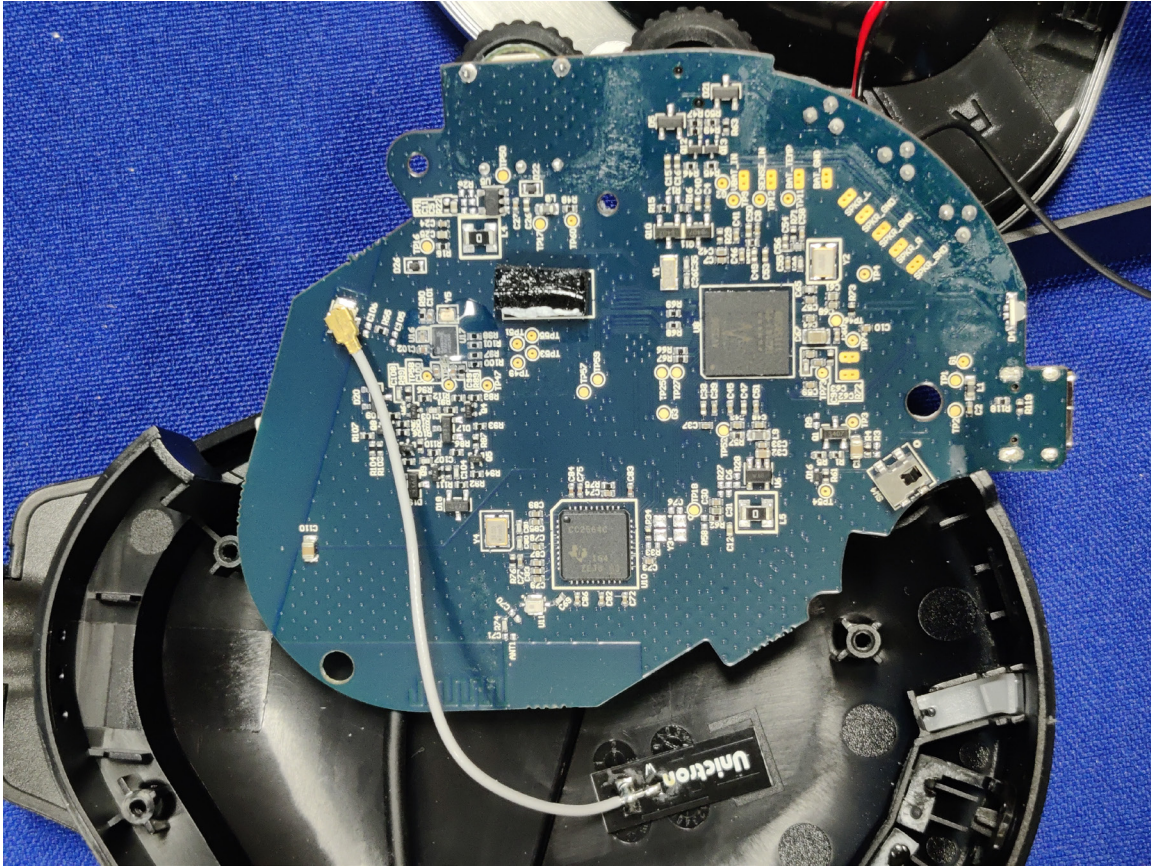


Figure 3: Internal Photo of Stealth700P-MAX-RX – Bottom PCB (Left Ear)

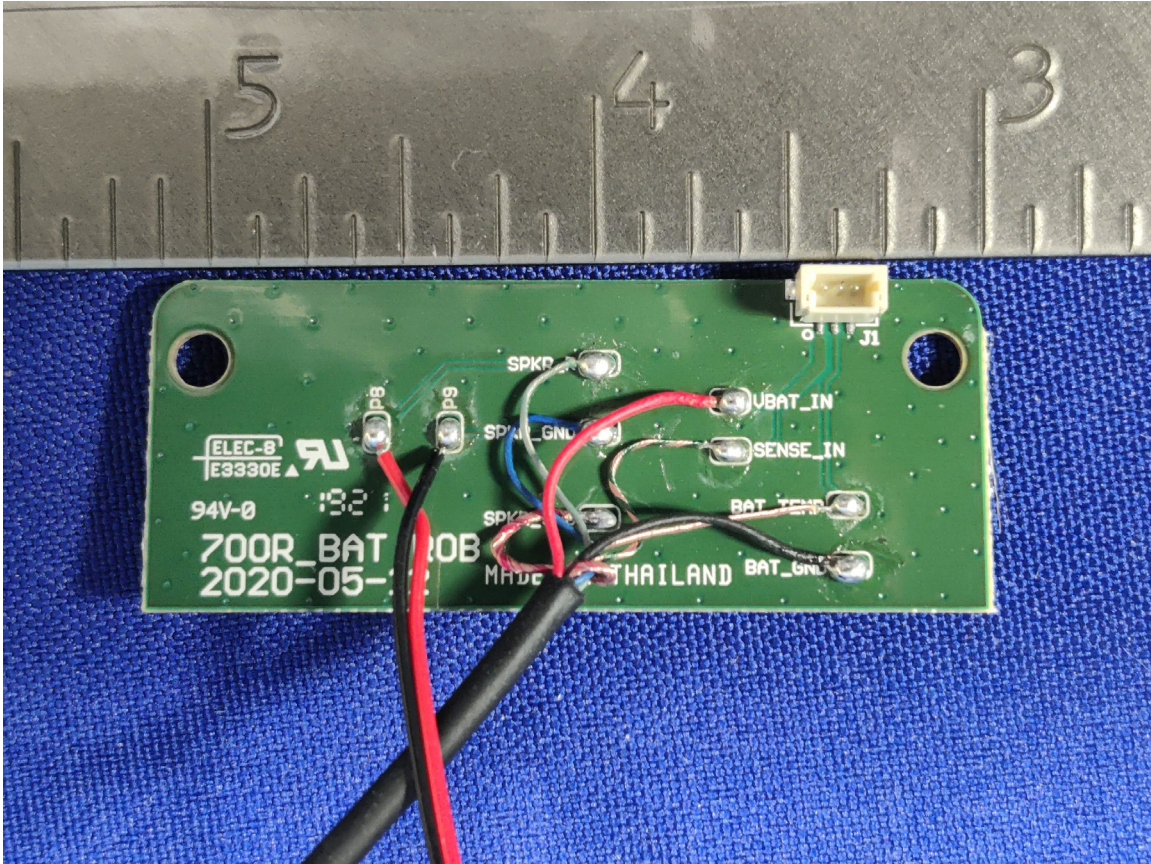


Figure 4: Internal Photo of Stealth700P-MAX-RX – Top PCB (Right Ear)



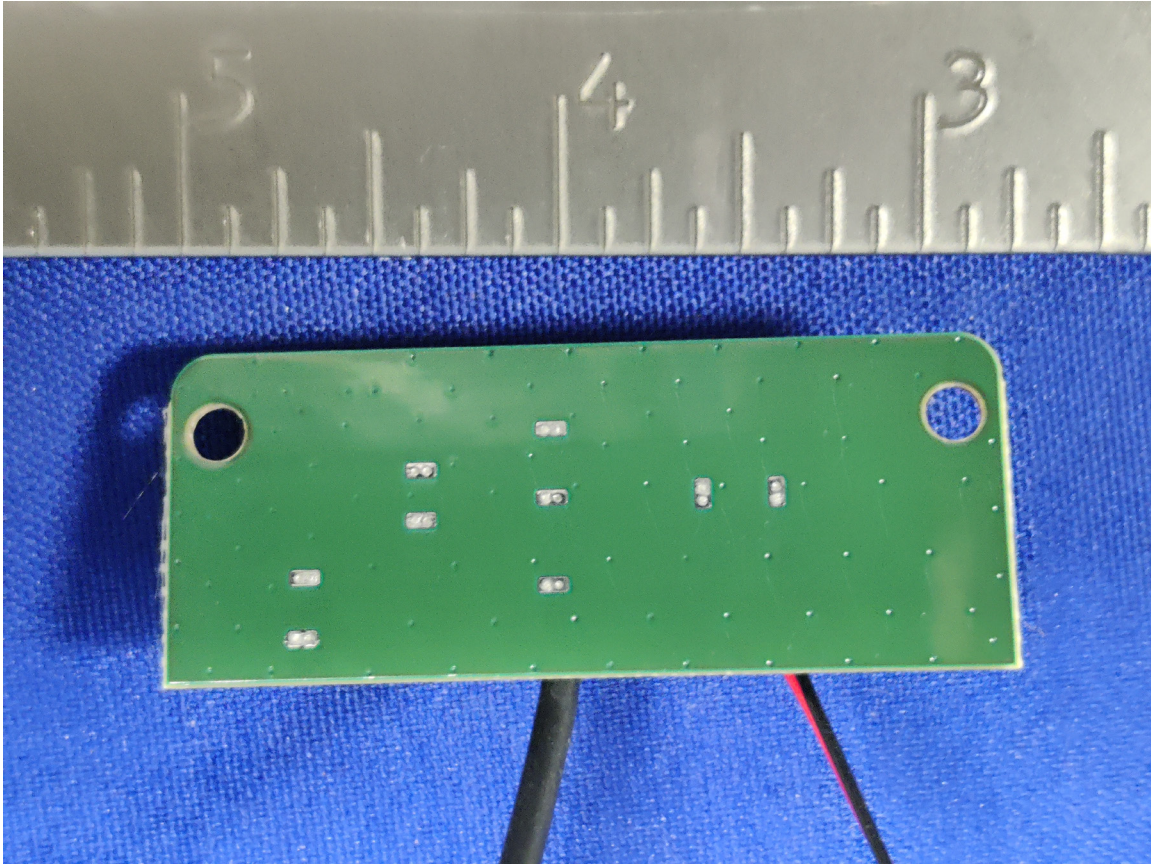


Figure 5: Internal Photo of Stealth700P-MAX-RX – Bottom PCB (Right Ear)



Figure 6: Internal Photo of Stealth700P-MAX-RX – Battery