

**UMID**

# mbook User's Manual

Model name: mbook bz



**Please note: Actual exterior and color may vary depending on the model.**

## Contents

<b>Chapter 1</b>	<b>Starting mbook</b>	<b>3</b>
	Patent	3
	Cautions for Safety	3
	Product Specifications	6
	Overview	8
<b>Chapter 2</b>	<b>Getting Started with mbook</b>	<b>10</b>
	Using the Battery Pack	10
	Charging the Battery	10
	Using the Keyboard	11
	Using the LCD Touch Screen	12
	External Optical Media Drive (ODD, purchased separately)	13
	Micro SD Card Slot	13
	Monitor/Projector/TV Connections	13
	Connecting a device via USB	14
	Using the Potplayer	14
<b>Chapter 3</b>	<b>Using Microsoft Windows XP</b>	<b>15</b>
	Windows XP Screen Layout	15
	Understanding the Start Menu & Window	15
	Power Option Registration Information	17
	Volume Control	18
	LCD Brightness Control	19
	Using Wireless LAN	19
	Using Bluetooth	20
	Watching DMB	24
	Using the Camera (Optional)	24
	Using the Voice Recorder	24
	Checking the Battery Level	24
	Configuring the Touch Screen	26
	<b>BIOS Setup</b>	<b>28</b>
	<b>Troubleshooting</b>	<b>33</b>
	<b>Safety Requirements and Notices</b>	<b>35</b>
	<b>Product Warranty</b>	<b>38</b>

## 1. Starting mbook

### Patent

The contents of this manual are the property of UMID CO., LTD.

- This manual covers the setup and operation of the mbook.
- This manual has been written with the utmost care, with the aim of preparing you to easily use the mbook. However, from time to time upgrades may be carried out on the mbook without prior notification. Please check our website if you have any problems.
- Under copyright law, this manual and its contents shall not in any way, shape, or form, be electronically or mechanically copied.
- UMID is not responsible for nor shall be held legally liable for any data loss.
- For your own protection, we recommend that all important data be regularly backed up on another device.
- All trademarks not belonging to UMID CO., LTD are used for information only, and do not indicate an endorsement of this product by their respective owners. The rights related to the trademarks of said companies are also protected under patent law.
- All Microsoft products listed in this manual are protected by the trademarks of the Microsoft Corporation.
- All other trademarks are the property of their respective owners.

### <Safety Precaution>



#### Warning

Failing to follow instructions marked with this symbol may cause personal injury and even death.



#### Caution

Failing to follow instructions marked with this symbol may cause slight injury to yourself, and/or damage to the product.



#### Warning

### [Power Related]

- **Do not touch the power cord with wet hands.**

There is the danger of electric shock.

- **Take care not to exceed the standard capacity (voltage/current) of a multi-tap or power outlet extension when using it for the product.**

The leakage of electric current may cause electric shock or fire.

- **If the power cord or power outlet makes a noise, disconnect the power cord from the wall outlet, and contact a service center.**

There is the danger of electric shock or fire.

- **Do not use a power cord or power outlet that is loose or damaged.**

There is the danger of electric shock or fire.

- **Be sure to firmly insert the power cord into the power outlet.**

Failure to do so may cause a fire.

- **Unplug the power cord by pulling on the plug, rather than the cable.**

If the cord is damaged, pulling on it may cause electrical shock.

#### **[Care During Installation]**

- Installation should be done on a flat surface. Do not install while holding the mbook in your hands. Furthermore, installation in a car should be done while the mbook is in its cradle.
- If you drop the device, damage to the device may result. UMID cannot be held liable for any damage incurred by dropping the device.
- We recommend that you only use the authorized UMID adaptor as your power supply.
- Please plug the mbook into a power bar that includes a surge protector.
- Before plugging the mbook into any power supply for the first time, please ensure it is the appropriate power supply. If you are unsure, please contact your local representative for confirmation, or check our website for further details.
- Please operate the mbook safely by avoiding contact of any part of the mbook with liquid, including but not limited to the power supply.
- Please check with your dealer before connecting the mbook to a power supply in your car to ensure that it is compatible.
- Vehicles such as trucks sometimes use higher than standard voltage. UMID is not responsible for any damage that results from connecting the mbook to the incorrect voltage.
- Avoid humidity.
- Do not cover the ventilation system of the mbook.
- Please follow all instructions regarding the safe use and operation of the mbook.
- To prevent shock or damage, please keep all liquids away from the mbook.
- Do not attempt to repair the mbook under any circumstances. Please call the nearest authorized dealer for service. Any unauthorized repairs shall void the

warranty of the mbook.

#### **[Issues Related to Battery Use]**

- **Please dispose of the batteries correctly.**

Failing to dispose of batteries correctly may lead to fire or explosion.

Battery disposal methods may differ according to your location. Please be sure to use the proper disposal method for your region.

Dispose of a used battery in the appropriate way.

- **Do not throw or disassemble the battery.**

This may cause injury, fire or explosion.

- **Use only batteries authorized by UMID.**

Use of the wrong battery may cause an explosion.

- **When storing or carrying a battery, avoid contact with metal objects, such as car keys or clips.**

Contact with a metal part may cause an excessive current and a high temperature.

This may damage the battery, or cause a fire.

- **Change the battery according to the instructions in the manual.**

Failure to do so may lead to product damage.

- **Do not heat the battery or place it in fire.**

This may lead to fire or explosion.

#### **Caution**

#### **[Customer Service]**

- If the mbook fails to operate according to specifications in any way, please send it back to us for service.
- If you drop or damage the mbook, please send it to us for service.
- If the screen is not performing correctly, please send it to us for an expert evaluation of the problem.

#### **[Always keep in a safe place]**

- Do not store the mbook near a heat source.
- If you do not plan to use the mbook for an extended period of time, please disconnect the power supply to prevent overcharging.

### **[Proper Maintenance]**

- Before cleaning, please disconnect the power supply from the mbook, and remove the battery.
- For cleaning, please use LCD cleaning products only, or a warm DAMP cloth.
- NEVER clean the Ultra Mobile PC with alcohol, solvent, or any other chemical agent.
- Do not spray liquid directly onto the screen.
- Do not use paper products such as paper towel, tissue, etc. for cleaning, as these can damage the screen.

### **[Cautions for Use While Traveling]**

- Always back up your files before traveling.
- Always check the local power supply for suitability with the mbook before use.
- Please use carry in a case for maximum protection against data loss.

**All accessories are sold separately.**

**This is handheld product. If the system halts due to static electricity, please reboot the system. If the system reboots successfully, the product is in normal condition.**

### **<Specification>**

Some specifications may vary depending on the model.

CPU	Intel ATOM Processor(Z515) 1.2GHz
Cache Memory	512KB
Main Memory	512MB / 1GB, Type: DDR2 SODIM
Main Chipset	Pulsbo
SSD	NAND Flash 8GB / 16GB / 32GB / 64GB
Graphic	Mobile Intel Graphic Media Accelerator 950
Sound Chipset	Realtek High Definition Audio Codec (ALC888)
Networks	- Wireless LAN: 802.11b/g - Bluetooth 2.0 + EDR - WiBro, HSPA, WiMAX (option)
Micro SD Card Slot	SD Card
DMB (optional)	T-DMB, DVB-T/H, ISDB-T (1-Seg)
CAP Sense	Volume control, screen magnification, scrolls and other functions

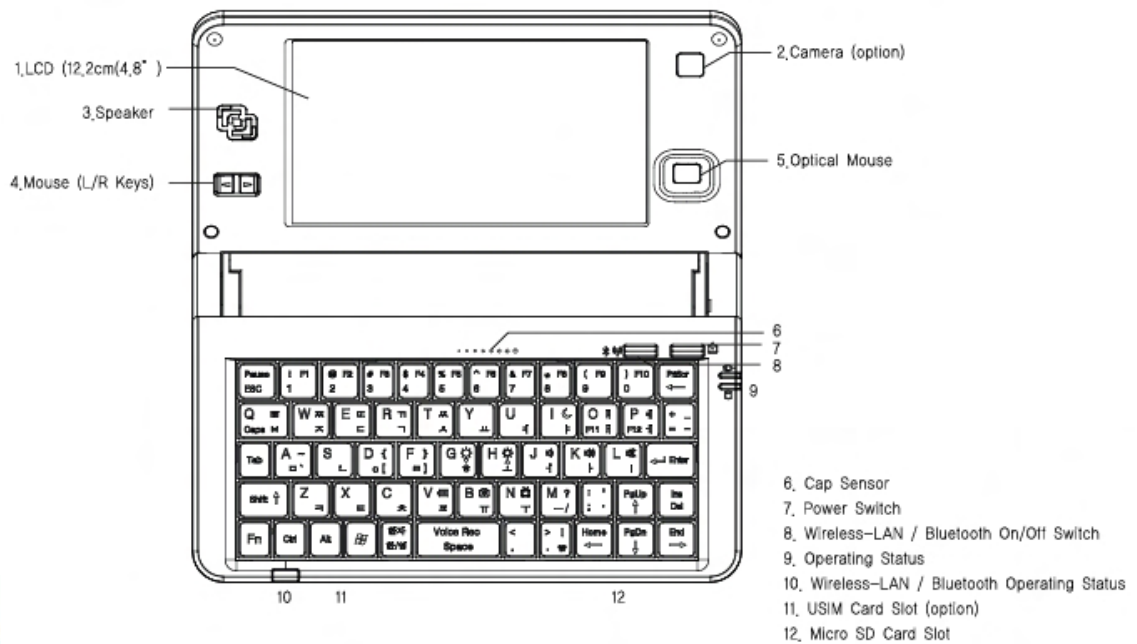
OvationNL	Mouse function (including the L/R keys)
Voice Recorder	O
Web Camera (optional)	1.3MP Web Camera
External I/O Interface (optional)	Microphone input port x 1, Micro SD Card Slot x 1, USIM Card Slot x 1, DC-in jack, RGB 3.5 pi 4 pole EAR JACK x 1 Output port x 1 A-type USB Port x 1 DMB ANT connection port x 1 (option)
External I/O Package (optional)	USB 2.0 x 1, VGA output x1
LCD size	12.2cm (4.8") WSVGA (1024 x 600) TFT Color LCD 161 x 96.5 x 30.2 mm
Weight	366g (battery included)
AC Adaptor	input: AC 100-240V, 50/60Hz output: DC 9V, 2.5A *Use authorized AC Adaptor only.
Battery	Lithium-Ion Battery: 2cell (7.4V, 2,600mAh) Charging time: For power off at room temperature → 4 hours or less (Actual charging times may vary depending on the model.) You cannot charge the mbook at a temperature below 0°C. The temperatures described below are the internal temperatures of the battery pack, and may differ from the actual ambient temperature.
Operation Environment	Operation Temperature: 10°C~35°C Operation Humidity: 20%RH~80%RH Storage Temperature: -10°C~60°C Storage Humidity: 10%RH~80%RH



System specifications are subject to change without notice. For detailed system specifications, please refer to the product catalog.

## <Overview>

### [Front]



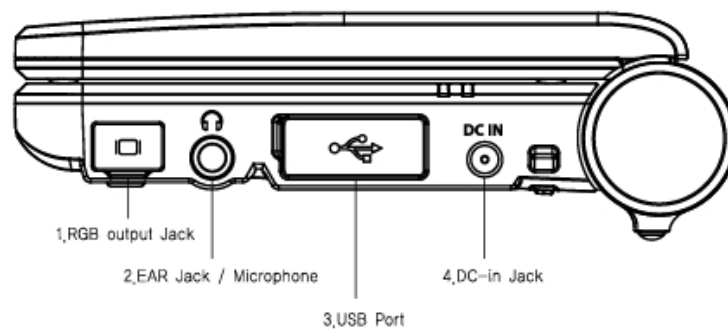
- |    |   |  |
|----|---|--|
| 1  | LCD (12.2cm (4.8"))                     | This is the display of the computer.   |
| 2  | Camera (optional)                       | The camera can take still photos and movie clips.  |
| 3  | Speaker                                 | The speaker produces audio.  |
| 4  | Mouse L/R keys                          | Mouse function (Left / Right Keys)   |
| 5  | Optical Mouse                           | Mouse function   |
| 6  | Cap Sensor                              | Volume control, screen magnification, scrolls and other functions.                               |
| 7  | Power Switch                            | - Power On/Off<br>- Standby Mode<br>(Enter Standby Mode by briefly pressing the Power On button) |
| 8  | Wireless-LAN / Bluetooth On/Off Switch  | Wireless-LAN(802.11b/g) and Bluetooth (2.0+EDR) On/Off   |
| 9  | Operating Status                        | Displays the operating status of your mbook.   |
| 10 | Wireless-LAN/Bluetooth Operating Status | Displays the operating status of Wireless-LAN and Bluetooth                                      |
| 11 | USIM Card Slot (optional)               | Insert USIM Card for WiBro, HSDPA, WiMax   |
| 12 | Micro SD Card Slot                      | Slot for a Micro SD card   |



[Operating Status]

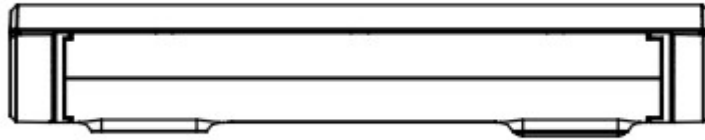
Charge Status	This shows the power source and the battery charge status.  ILLUMINATED GREEN: when system is operating BLINKING GREEN: when the system is in standby mode ILLUMINATED RED: when the battery is being charged BLINKING RED: when the battery is low
NAND Flash (SSD)	This shows that NAND Flash (SSD) is working.

[Side -Right]



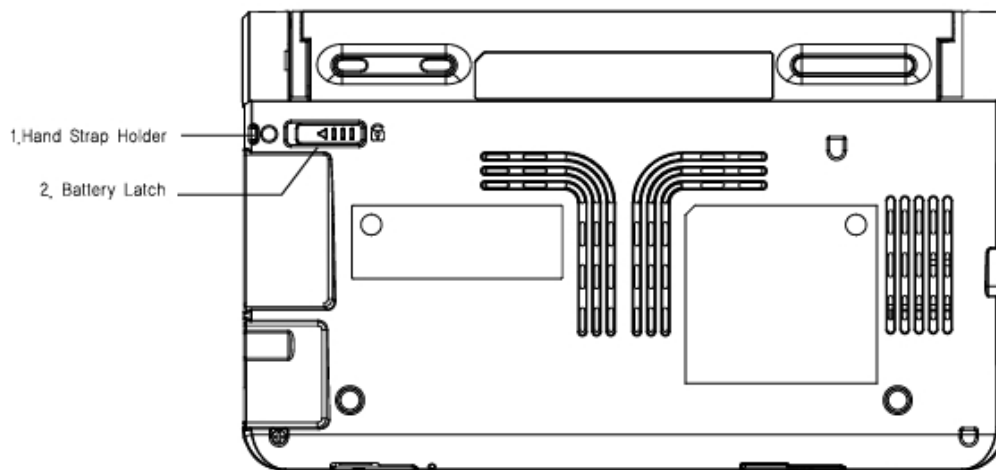
DC-in Jack	Port used to connect the AC adaptor supplying power to the computer
USB Port	Port used to connect to a USB Client
EAR Jack / Internal Microphone	Jack to connect your 3.5 pi earphone. Used to record sound
RGB output Jack	This is where you can connect your RGB cable, which can be connected to a monitor.
DMB Antenna (Left)	Antenna for watching DMB, DVB-T and DVB-H

[Back]



**Battery** A Lithium Ion rechargeable battery that supplies power to the computer.

[Bottom]



**Battery latch** The latch used to remove or install the battery.

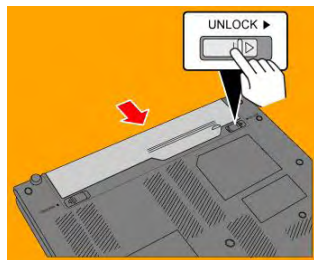
**HandStrap holder** You can connect the hand strap here.

## 2. Getting started with mbook

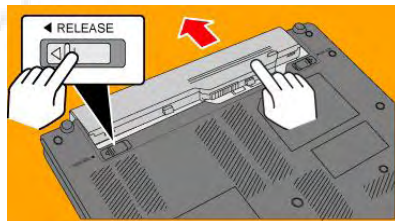
### <Using the Battery Pack>

When you use the battery pack for the first time, you are recommended to first charge it fully using an AC adaptor. After the battery has discharged, charge it fully again. This will help to maintain the normal lifetime of the battery.

- ① Turn the mbook over and insert the battery pack into the groove shown in the figure. Then, press the battery pack in the direction of the arrow until you hear a clicking sound.

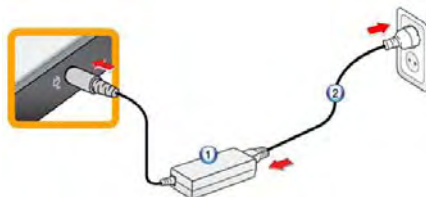


- ② If the battery status lamp is blinking red, you are recommended to plug the mbook into the AC adaptor.
- ③ To separate the battery pack, push the battery latch to the outside as shown in the figure, and remove the battery in the direction of the arrow.
- ④ The battery is a consumable part. As you use it, its lifetime will gradually reduce.



### <Charging the Battery>

Install the battery and connect the AC adaptor to the DC-in jack of the computer. The battery will begin to charge.



## <Using the Keyboard>



### \* Hotkeys

: Hotkeys can be operating by holding the Fn key and pressing the desired hotkey.

Fn+	Fn,Shift+	Name	Function
ESC		Pause	
1		F1	
2		F2	
3		F3	
4		F4	
5		F5	
6		F6	
7		F7	
8		F8	
9		F9	
0		F10	
O		F11	
P		F12	
←		PrtScr	
Q		Caps	
I		Power saving mode	
+		Remove	
	+	Under bar	
A			
	A		
D		Large parenthesis	
	D	Medium parenthesis	
F		Large parenthesis	
		Medium parenthesis	

G	Brightness control	Dim monitor
H	Brightness control	Brighten monitor
J	Volume control	Lower volume
K	Volume control	Increase volume
L	Volume control	Mute
V	Battery	Display battery level
B	Camera	Camera On/Off
N	DMB	DMB On/Off
M	Slash	
	M	Question mark
:		Small quotation mark
	:	Large quotation mark
Del		Ins
Space		Voice Rec
>		
↑		PgUp
↓		PgDn
←		Home
→		End

#### <Using the LCD Touch Screen>

You can operate the LCD touch screen using a Stylus Pen or your finger.

Please be careful! Sharp objects may scratch or damage the LCD surface.

Mouse	Stylus Pen	Function
Single-click	Single-tap	Single-tap with the pen to select an item.
Double-click	Double-tap	Double-tap with the pen to launch an item.
Right-click	Press and Hold	Press and hold with the pen for more than 2 seconds to display a contextual menu.
Drag	Drag	Press an item with the pen and drag it to move the item.

#### <External CD drive (ODD, purchased separately)>

Mbook supports an USB external CD drive (sold separately).

Connect it to the mini USB port of your mbook directly, or use the provided USB Gender

for connections.

Before using it, you must check the type of external optical media drive you are using (drive type).

Drive type	Function
DVD-ROM	Reads a CD/DVD.
DVD-Combo	Reads a CD/DVD, and records data on a CD.
DVD Super Multi	Reads a CD/DVD and record the data on a CD/DVD. The following DVD types are supported: DVD±R, DVD±RW, DVD-RAM.

#### <Micro SD Card Slot>

A Micro SD card slot is provided so that you can use Micro SD cards. A Micro SD card is a removable storage device that can be used to conveniently exchange data with other

devices, including digital cameras, PDAs, and others.



- 💡 - Micro SD cards must be purchased separately.
- Micro SD cards are used for data storage, but do not support copy protection.
- When you move around, there is the danger that your Micro SD may slip out of the mbook. So be careful.
- SDHC is not supported.

#### Using a Micro SD Card

- Insert a card into the slot in the correct direction.
- Removing a card: Push the end of the Micro SD card and take it out.

#### <Monitor / Projector / TV>

You can connect an external display device to the mbook, such as a monitor, a projector, or a TV, when you need to give a presentation or watch videos or movies.

💡 Any I/O pack or connection cable that can be connected to your mbook for monitor outputs must be purchased separately.

#### (Connect)

After connecting the separately purchased I/O pack to your mbook via USB, connect

the monitor output port (pin 15) of the I/O pack to the RGB port of your monitor, projector or TV using a cable (sold separately).

#### < Connecting a device via USB >

You can connect the following devices to your mbook.

You can connect a device that supports a USB type of keyboard, hub, or digital camera.

Connect them directly to the mini USB port of your mbook, or use the provided USB Gender for connections.



#### <To remove a USB device safely>

Look for the hardware removal icon in the task bar (in Linux, it is in the upper-right corner; in Windows XP, it is at the bottom right of the screen.) to remove your device safely.

#### <Using Thepot Player>

Using Thepot Player, you can enjoy the useful functions of various applications, such as multimedia or office programs. For more details on Thepot Player, download the guide from <

## 4. Using Microsoft Windows XP

### Windows XP Screen Layout

The desktop is the working area on the computer. It consists of a large workspace and a taskbar at the bottom, as shown in the figure below.



#### 1. Start

: Opens the Start menu.

#### 2. Taskbar

: Programs currently running are displayed here.

#### 3. System Tray with Clock

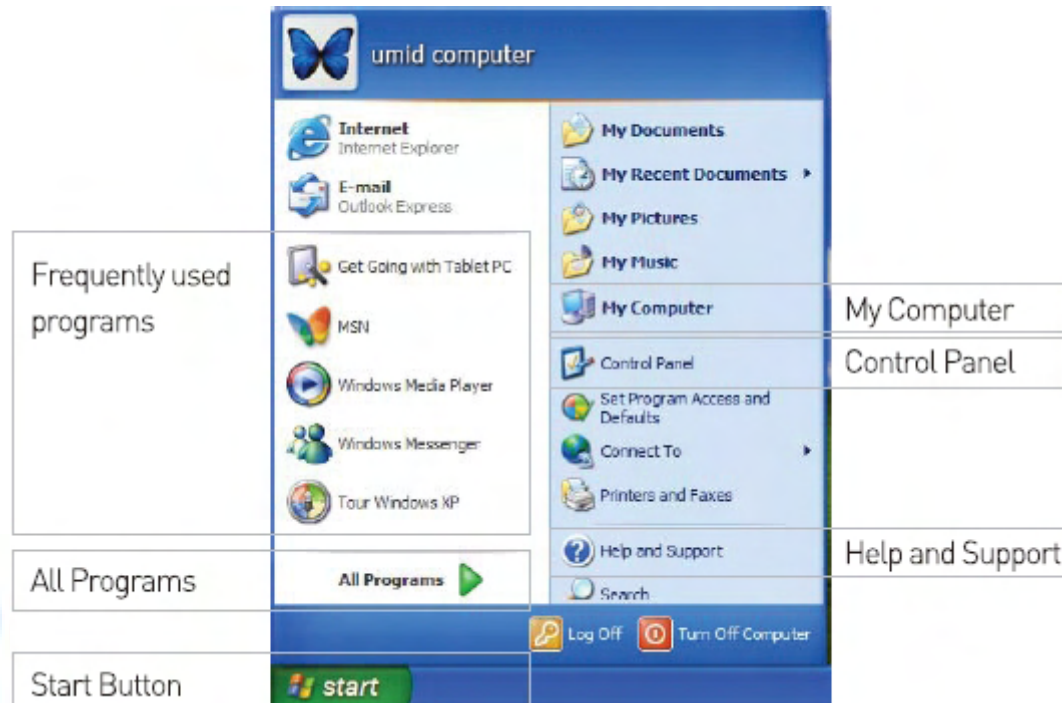
: Displays some program icons that are currently running. Infrequently used icons are hidden.  
When you click the left arrow icon, hidden icons will be displayed.

### Understanding the Start Menu

The Start menu includes everything that you require to start using Windows. From the Start menu you can run a program, open a file, assign system users with the Control Panel, receive



support by clicking Help and Support, and search for desired items on your computer or the Internet by clicking Search.



① My Computer

: Displays the contents of the hard disk, the CD-ROM drive, the network drive(s), and floppy disks. It can also be used to search for and open files and folders.

② Control Panel

: Enables users to configure settings on the computer.

③ Help and Support

: Provides on-line help, information on Windows and troubleshooting.

④ Search

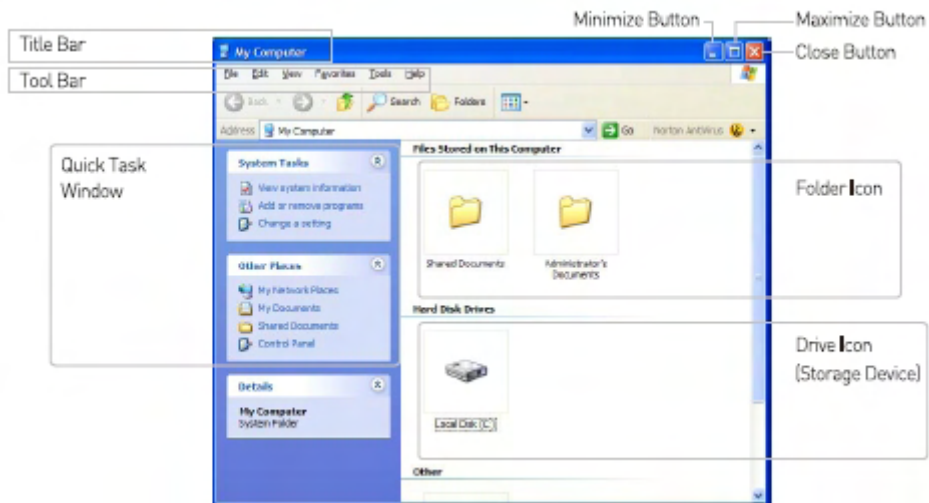
: Enables users to search for information in files or the Internet.

⑤ Run

: Run programs or opens documents.

### Understanding the Window

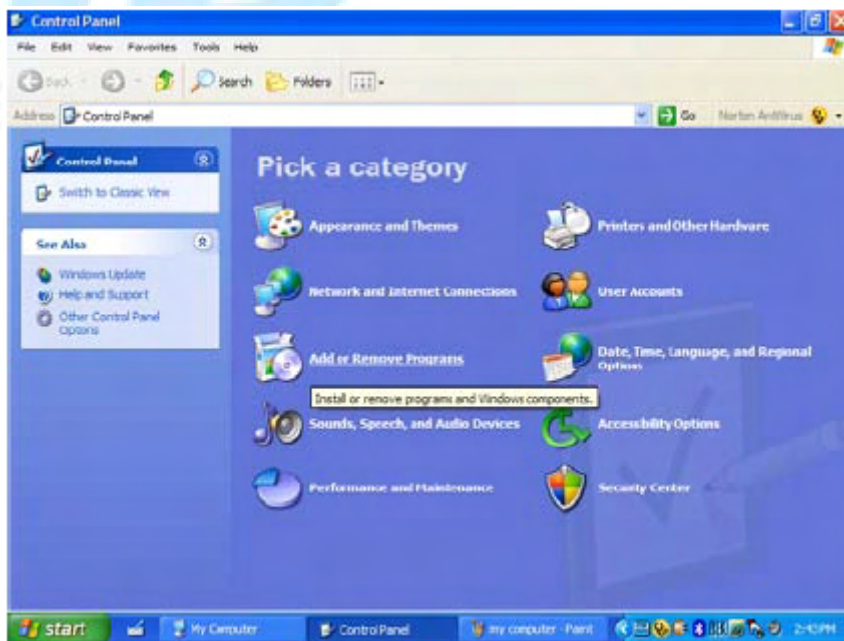
The My Computer window, which is a window for viewing the contents of the computer's hard drive, will be used as an example here to show the basic composition of a window. Click Start > My Computer.



## Control Panel

In the Control Panel, various tools to configure Windows are provided.

- \* Opening the Control Panel
- Select Start > Control Panel



## Power Option Registration Information

- ① Press the start button from the home screen and select Control Panel.
- ② Select Control Panel > Switch to Classic View and double-click on the Power Option Icon.

- ③ When the power option registration information screen appears, you can configure the power management items to suit your user environment in the power properties tab.



- Select the portable/laptop option in the power properties menu to configure power management to suit your laptop. In the minimal power management settings, configure the detailed idle time for monitor off, hard disc off, system standby mode, and max system power saving mode.

- When the mbook enters system standby mode, the monitor and the hard disc will be turned off to reduce the power consumption.
- In system standby mode, the information on your laptop will not be stored on the hard disc, so you must save your work before entering standby mode.
- When the mbook enters the max system power saving mode, the computer will automatically save all of the contents in RAM onto your hard disc, and terminate all running processes.

### Volume Control

- Using the Hotkeys

**Fn + J = Volume Down**

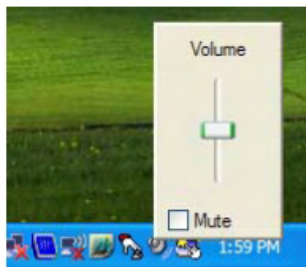
**Fn + K = Volume Up**

**Fn + L = Mute**

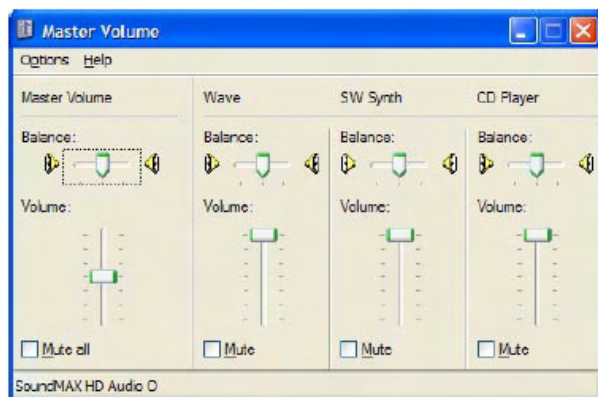
- Using Volume Control Program

Click the Volume icon ( ) on the taskbar, and slide the volume bar up or down.

Alternately, double-click on the Volume icon ( ) and adjust the general volume control.



Alternatively, double-click on the Volume icon ( ) and adjust the master volume control.



## LCD Brightness Control

Brightness can be controlled using the Hotkeys.

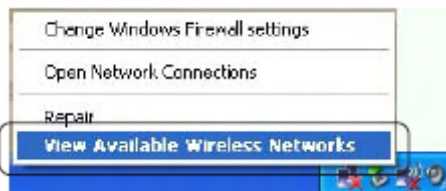
**Fn + G = Darker**

**Fn + H = Brighter**

## [Using Wireless-LAN]

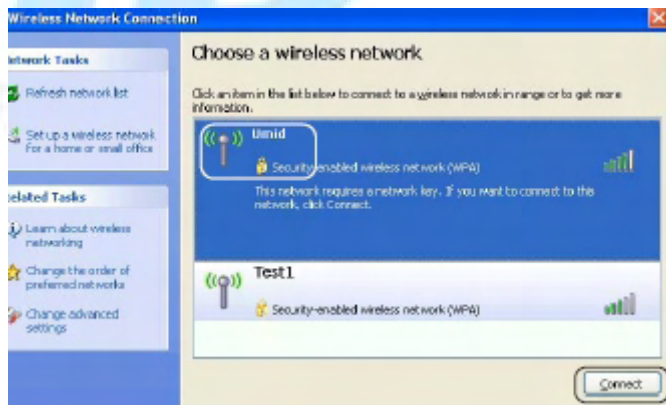
**The ON button is next to the Power button.**

1. Please press and hold the wireless LAN connection icon on the desktop (right-click function) using the pen.



2. Select the Access point and then click Connect.

To connect to a secure wireless network, you must enter the network key.



## [Using Bluetooth]

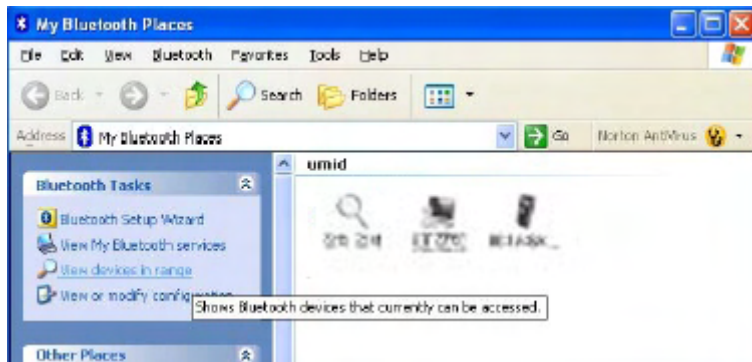
**The ON button is next to the Power button.**

Bluetooth 2.0 is mounted to support the transmission of data to a Bluetooth device.

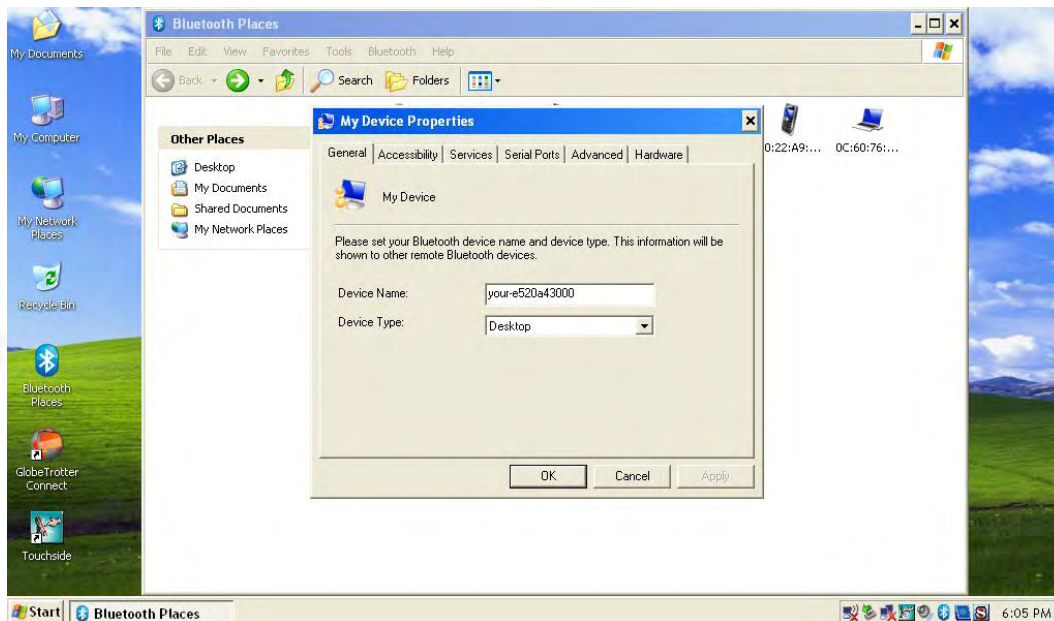


Double click the Bluetooth icon (on the desktop or taskbar).

(Bluetooth settings in my system)

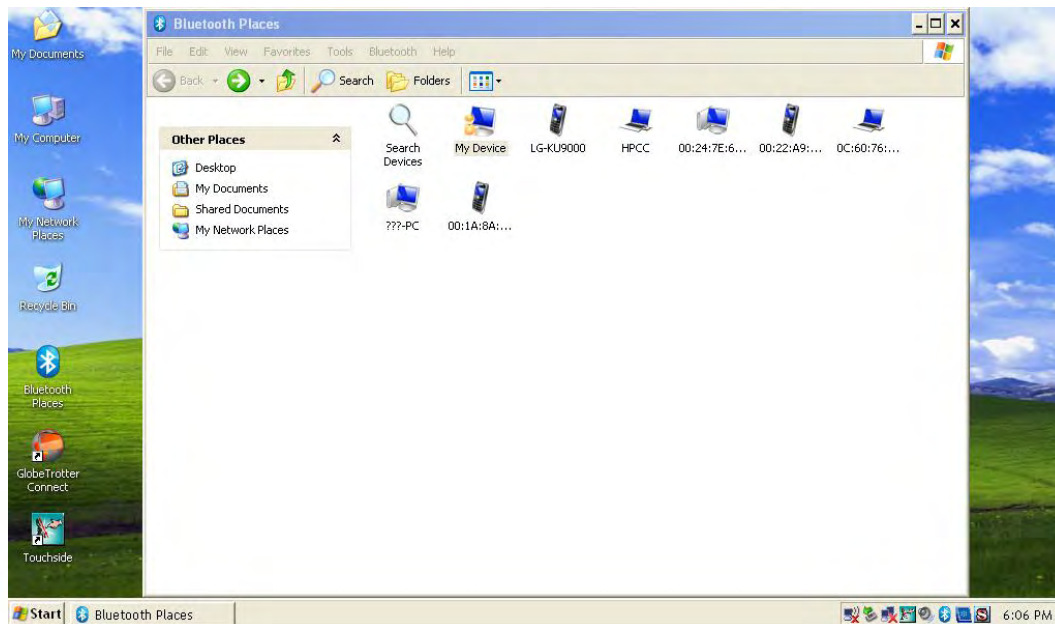


- If you want to change your Bluetooth information, touch and hold for 2 seconds (right-click function) the 'My Device' icon using the touch pen, as shown in the following picture, and change the device name in 'My Device Properties.'

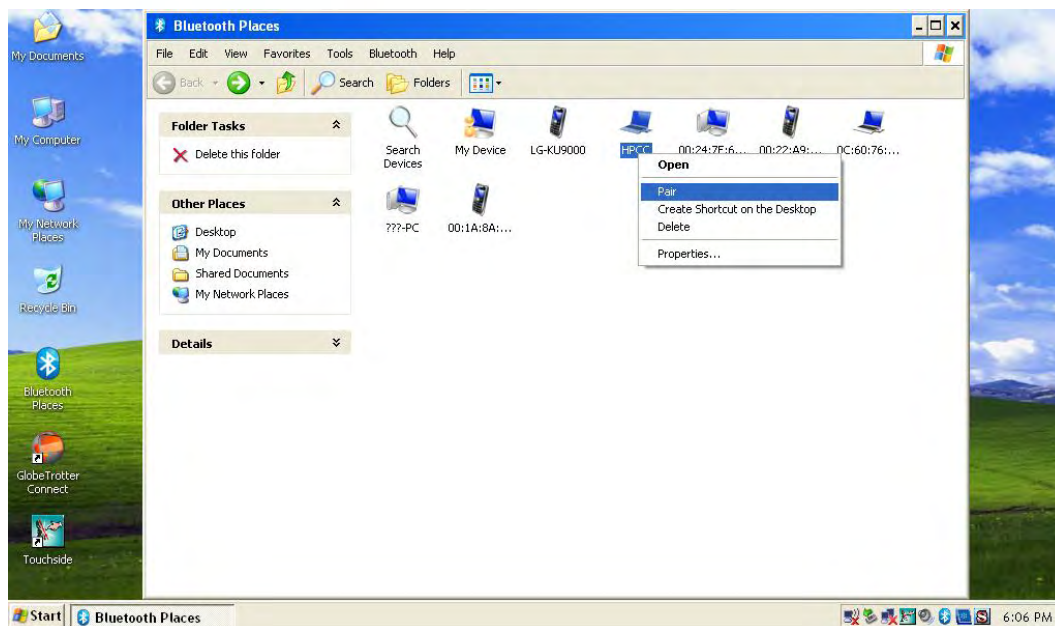




- Connecting to other Bluetooth devices
- Double-click the 'Device Detection' icon to search for Bluetooth devices that are near the mbook



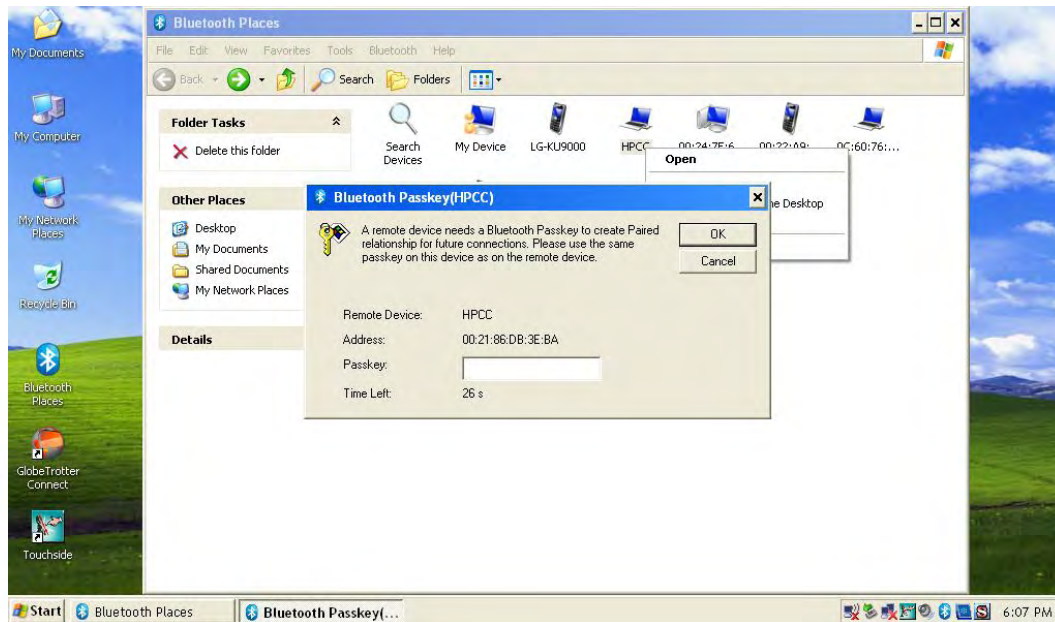
- To use a Bluetooth device, you must pair the mbook with the device. Touch and hold for 2 seconds (right-click function) the icon for the device that you want to connect to, and you will see the following screen: (select pairing)



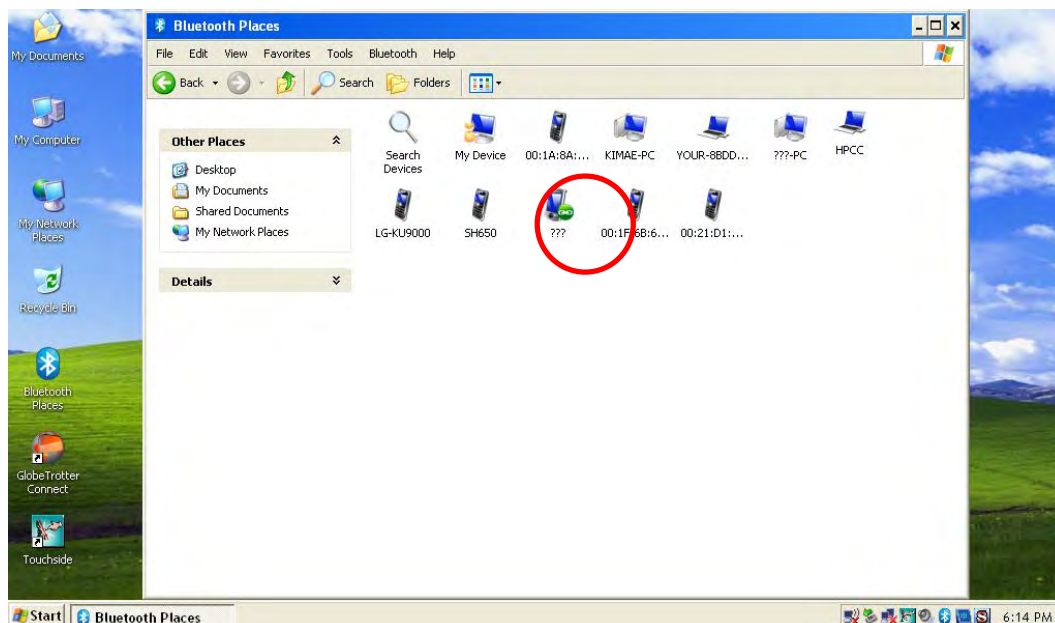
- Pairing requires a password for connection.

Some Bluetooth devices have passwords that are already set, while some devices require the user to set up his or her own password.

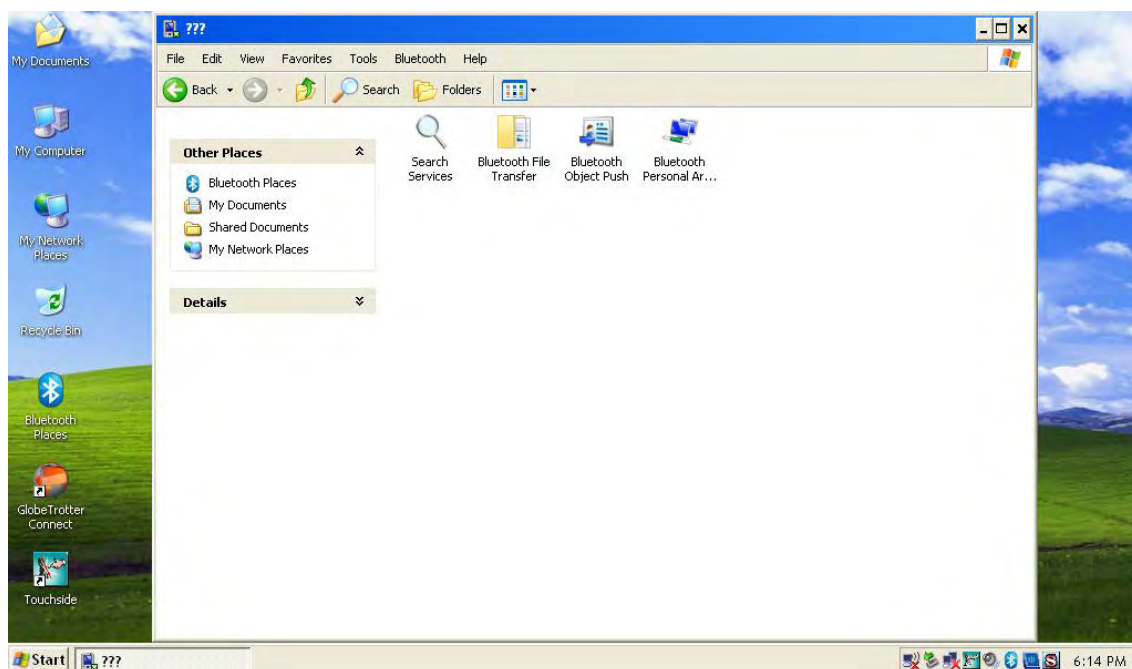
- After you enter the first password, the message will say, 'Enter password for the device with which you want to pair.' After you enter your password in the following pop-up window, pairing will be completed.



- The following picture shows when the devices are paired.



- If you double-click the icon for the device to which you are paired, you can see the list of all available device services.



(Important information for Bluetooth)

1. Typically, the mbook can connect to Bluetooth devices within a 3m range.
2. While it is possible to connect to multiple Bluetooth devices simultaneously, the data transfer rate can be quite low and sometimes unstable, so it is recommended to connect to a single Bluetooth device only.
3. Data transfer between Bluetooth devices may have a negative effect on system performance.
4. The performance of the services provided by Bluetooth devices may vary. For the availability of equipment, please refer to the documentation provided.

### Watching DMB

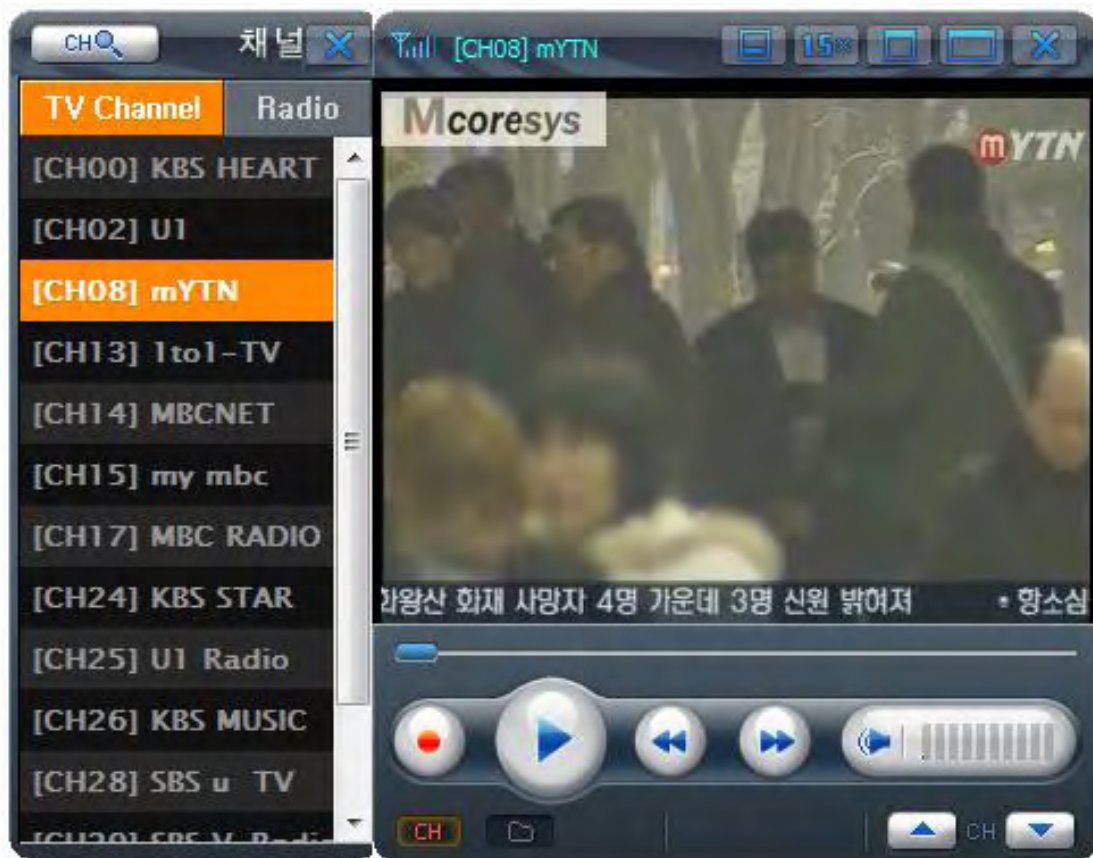
**Press the Fn key and the “N” key on your keyboard at the same time to enjoy the power of your DMB.**

When the DMB window is closed, the DMB will automatically power-off to minimize power consumption.

- 4 screen sizes are available: 1x screen, 1.5x screen, 2x screen, full screen.
- Different channels will be available in different areas. When you move from one area to another, make sure to scan the channels first.



<DMB screen>



#### Using the Camera (optional)

Press the Fn key and the “B” key on your keyboard at the same time to toggle the camera power on/off.

When the camera window is closed, the camera will automatically power-off to minimize power consumption.

#### Using a Voice Recorder

Press the Fn key and the “Space” bar on your keyboard at the same time to run the Voice Recorder program.

#### Checking the Battery Level

Press the Fn key and the “V” key on your keyboard at the same time. An icon showing the battery level will appear in the middle of the screen.

(How to maximize battery life)

- Press the Fn key and the “G” key on your keyboard at the same time to dim the monitor. This will help you to maximize battery life.
- Turn off all the services that are not in use, such as Bluetooth, wireless LAN, DMB or the camera. This will also help you to extend the battery life.

#### Using Cap Sensor

To activate Cap Sensor, press Fn Key and cap sensor at the same time. The picture below will show up on LCD display. Select the function, and control by rubbing it in left or right direction.

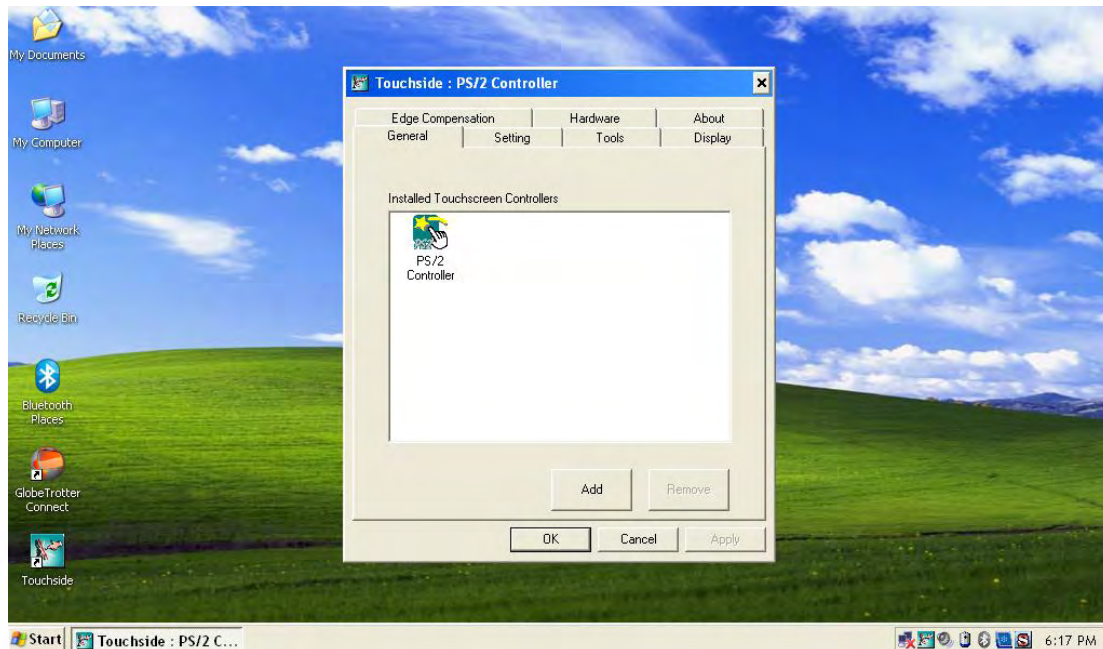


**MID**  
table lifestyle

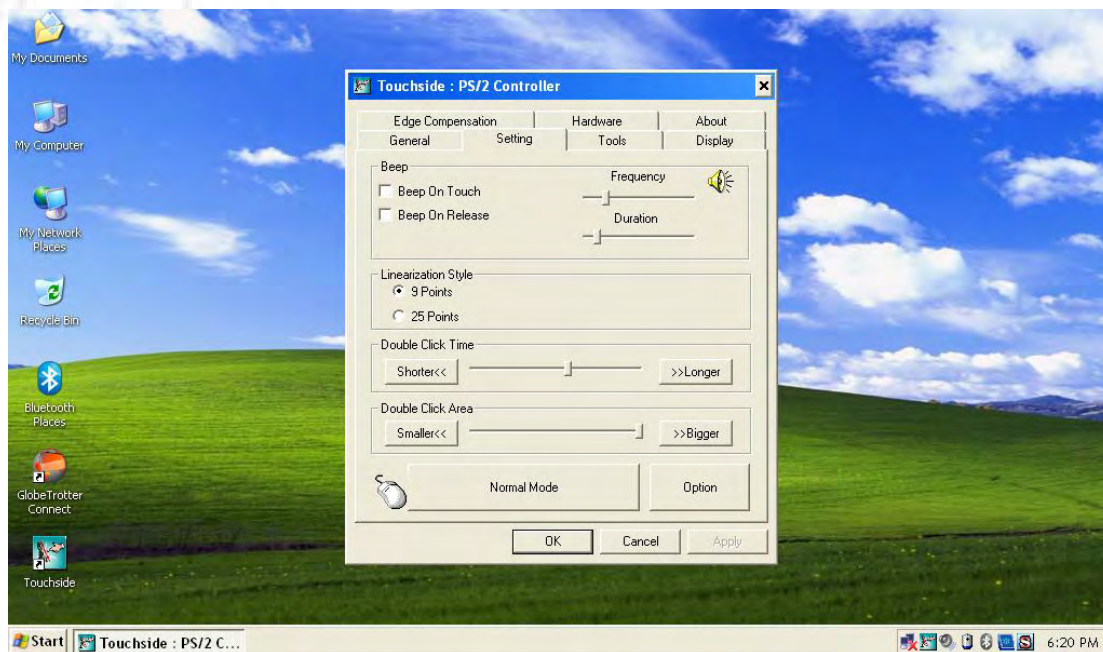
## Setting the Touch Screen

Click on the Touchside icon on desktop to configure the touch screen.

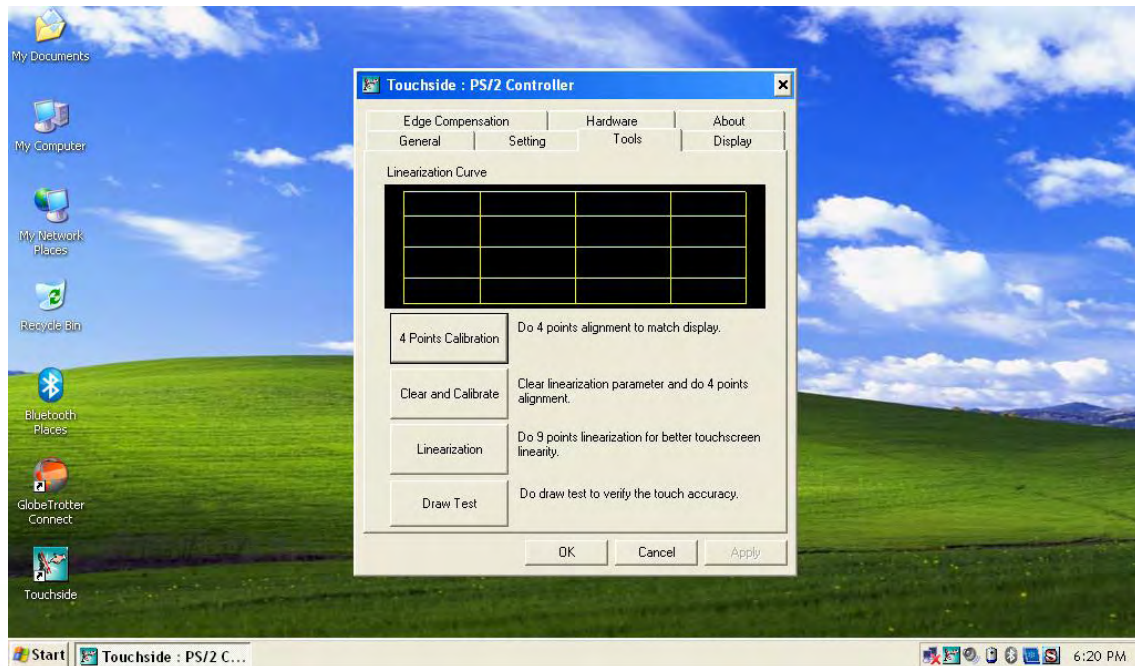
(Touch screen setting screen)



(Sound and double-click setting screen)



(When the coordinates get twisted, use the windows shown below to correct the coordinate setting.)



In addition to the menu shown above, there are display, touch area correction, H/W information and information menus.

## BIOS Setup

The System Setup (BIOS) program enables you to configure your mbook's hardware.

\* Use the BIOS setup to set a boot password, change the booting priority or add a new device.

As an incorrect setting may cause your system to malfunction or crash, you are recommended to use caution when setting up the BIOS.

\* The functions of the BIOS setup are subject to change for the purposes of functional enhancement.

### 1. Starting system setup

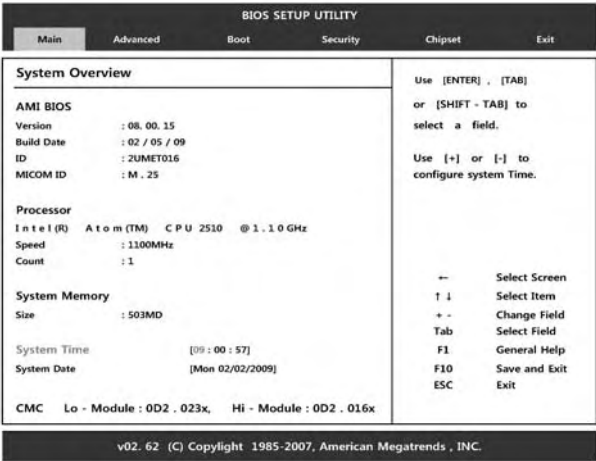
1. Press the Power switch to turn the mbook on.
2. The booting screen (mbook logo) will appear. Press the ESC key.
3. After a moment, the BIOS setup screen will appear. Items included in the BIOS setup may differ depending on the product.





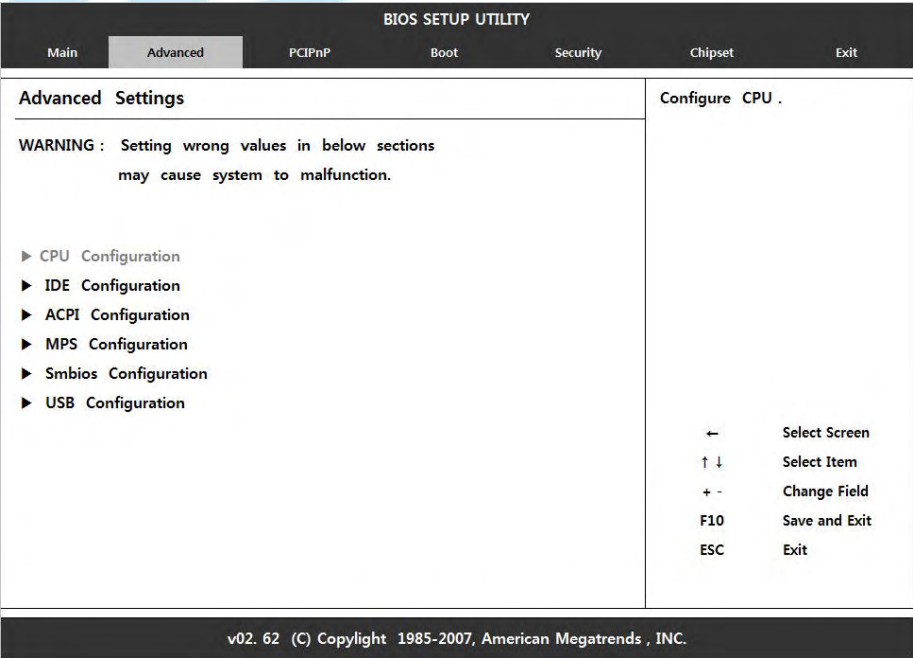
2. Setting main functions

Sets the basic system elements (System data, System time)



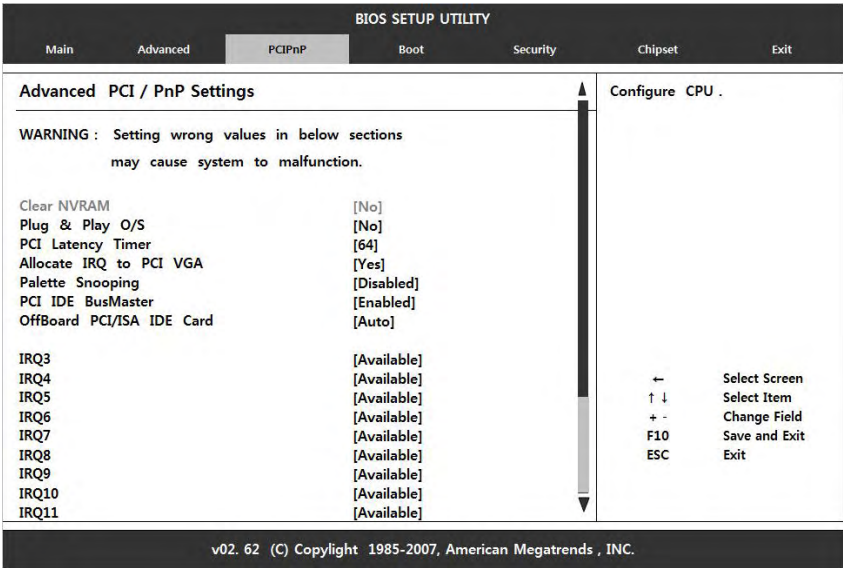
3. Setting advanced functions

Configures the advanced functions on your computer.



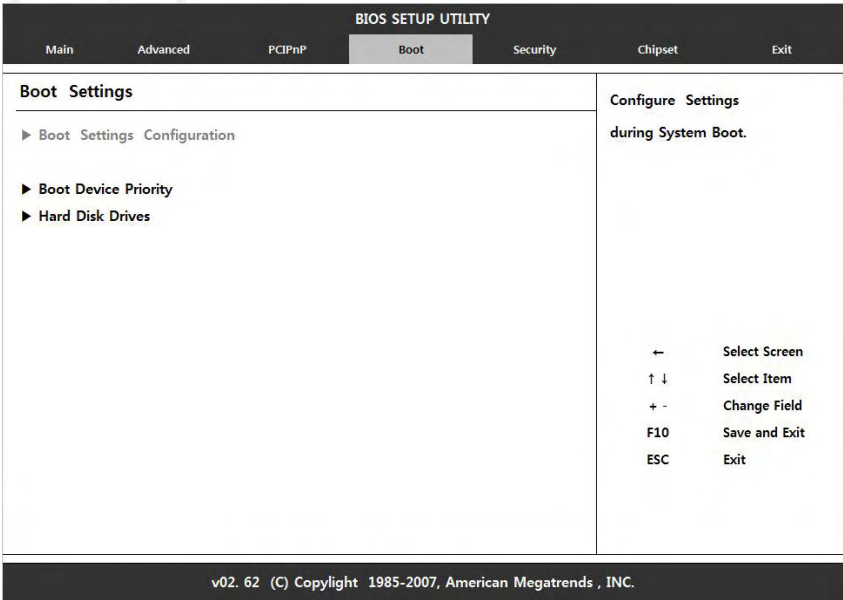
4. Setting PCI / PnP

Configures the PCI/PnP settings.



5. Setting boot-up

Specifies the order of boot devices, and configures them.



6. Setting security

Sets security functions, including passwords.

BIOS SETUP UTILITY						
Main	Advanced	PCIPnP	Boot	Security	Chipset	Exit
Security Settings				Install or Change the password		
Supervisor Password : Not Installed						
User Password : Not Installed						
Change Supervisor Password						
Change User Password						
Boot Sector Virus Protection [Disabled]						
				← Select Screen		
				↑ ↓ Select Item		
				+ - Change Field		
				F10 Save and Exit		
				ESC Exit		
v02. 62 (C) Copyright 1985-2007, American Megatrends , INC.						

7. Setting chipset

Configures chipset setting in the product.

BIOS SETUP UTILITY						
Main	Advanced	PCIPnP	Boot	Security	Chipset	Exit
Advanced Chipset Settings				Configure North Bridge features .		
WARNING : Setting wrong values in below sections may cause system to malfunction .						
▶ North Bridge Configuration						
▶ South Bridge Configuration						
				← Select Screen		
				↑ ↓ Select Item		
				+ - Change Field		
				F10 Save and Exit		
				ESC Exit		
v02. 62 (C) Copyright 1985-2007, American Megatrends , INC.						



8. Exit and save

Specifies how to exit system setup.

BIOS SETUP UTILITY

MainAdvancedPCIPnPBootSecurityChipsetExit

Exit Options

Save Changes and Exit  
Discard Changes and Exit  
Discard Changes  
  
Load Optimal Defaults  
Load Failsafe Defaults

Exit system setup  
after saving the  
changes .  
  
F10 key can be used  
for this operation .  
  
← Select Screen  
↑ ↓ Select Item  
+ - Change Field  
F10 Save and Exit  
ESC Exit

v02. 62 (C) Copyright 1985-2007, American Megatrends , INC.

## Troubleshooting


Q. The LCD screen is too bright or too dark.


A. Press the Fn key and the “G” key on your keyboard at the same time to dim the screen, or press the Fn key and the “H” key at the same time to make it brighter.


Q. The mbook isn't finding any wireless networks.

A. Check to ensure that the wireless LAN/Bluetooth power button next to the main power buttons is turned on.

Q. The mbook is unable to connect to the wireless network.

A. Press the button  to see if the wireless LAN is activated.

ON  The blue icon in the upper left corner of the screen will appear and then disappear.

OFF  The grey icon in the upper left corner of the screen will appear and then disappear.

If you can't set up an AP connection, please ask your AP administrator or internet service provider.

Q. The mbook can't find any Bluetooth devices.

A. Check to ensure that the wireless LAN/Bluetooth power button next to the main power buttons is turned on.

Q. The camera does not operate (applicable models only).

A. Press the Fn key and the B key on your keyboard at the same time to turn camera power on.

Q. The DMB system does not run.

A. Press the Fn key and the “N” key on your keyboard at the same time to turn DMB power on.

Q. When I touch the LCD screen with the stylus pen, it makes a stain on the screen.

A. The LCD screen can show temporary blurring effects. This does not mean that the product is defective.

(This LCD Panel can cause inaccuracies in pixel brightness on the order of 0.005%. However, this does not affect the product performance.)

Q: I can't get the DMB channel I'm looking for.

A: Check the DMB broadcasting status in your current area. Different areas will have different channels available. Press the channel scan button to search for channels before viewing.  
Also, check to ensure that the DMB antenna is in place.

Q. I can't hear sounds, or there is too much noise.

A. Check whether the volume is set to zero or mute is activated.

Check to confirm that the earphone terminal is connected properly. Check the earphone terminal for any foreign substance.

Make sure the audio file is ok.

Q. I can't hear my voice when I speak into the built-in mic.

A. Sounds coming through the mic are muted in the main audio channel to avoid feedback.  
Please note that this does not affect the recording function.

Q. The mbook stopped abruptly while I was using it.

A. Check to see if the battery is discharged.

If the air ventilation hole in the bottom of this product is obstructed, causing the internal CPU temperature to rise higher than 60 degrees Celsius, automatic shutdown will be activated to protect the system. Please, wait until the temperature is lowered before using the product. This is not a defect.

Q. Latest software updates

A. Connect to <http://i-mbook.com> -> Service Center -> Download to download the latest software updates.

United States of America

[USA and Canada Safety Requirements and Notices]

Do not touch or move the antenna while the unit is transmitting or receiving. Do not hold the antenna in close proximity or contact with any exposed parts of the body, particularly the eyes or the face, while transmitting. Do not operate the radio or attempt to transmit data unless the antenna is connected; failure to do so may cause damage to the radio.

Use in specific environments:

The use of wireless devices in hazardous locations is limited by the constraints imposed by the safety directives of such environments. The use of wireless devices on airplanes is governed by the Federal Aviation Administration (FAA). The use of wireless devices in hospitals is restricted according to the limits set forth by each hospital.

Explosive Device Proximity Warning

Do not operate a portable transmitter (such as a wireless network device) near unshielded blasting caps or in an explosive environment, unless the device has been modified to be qualified for such use.

Use On Aircraft Warning

FCC and FAA regulations prohibit the airborne operation of radio frequency wireless devices, because their signals could interfere with critical aircraft instruments.

Other Wireless Devices

Safety Notices for Other Devices in the Wireless Network: Please refer to the documentation supplied with wireless Ethernet adaptors or other devices in the wireless network.

This Part 15 radio device operates on a non-interference basis with other devices operating at this frequency. Any changes or modifications to the product not expressly made by Samsung could void the user's authority to operate this device.

Unintentional Emitter per FCC Part 15

This device complies with part 15 of the FCC Rules. Operation of the device is subject to the following two conditions: (1) this device may not cause harmful interference, and (2) this device

must accept any interference received, including interference that may cause undesired operations.

This Equipment has been tested and found to comply with the limits for a Class B Digital device Pursuant to Rule 15 of the FCC Rules. These limits are designed to provide reasonable protection against harmful interference in a residential installation. This Equipment uses and can radiate radio frequency energy, and may cause harmful interference if not installed and used in accordance with the instructions. If this equipment does cause harmful interference to radio or television reception, which can be determined by turning the equipment off and on, the user is encouraged to try to correct the interference using one or more of the following measures:

- Reorient or relocate the receiving antenna.
- Increase the distance between the equipment and the receiver.
- Connect the Equipment into an outlet on a circuit different from that to which the receiver is connected.
- Consult with the dealer or an experienced radio/TV technician for help.

If necessary, users should consult with the dealer or an experienced radio/television technician for additional suggestions. The user may find the following booklet helpful: "Something About Interference." This is available at local FCC regional offices. Our company is not responsible for any radio or television interference caused by unauthorized modifications made to the equipment, or by the substitution or attachment of connecting cables and equipment other than those specified by our company. The correction of such interference will be the responsibility of the user. Use only shielded data cables with this system.

#### International emitter per FCC Part 15

Low Power, Radio lan-type devices (radio frequency (RF) wireless communication devices), operating in the 2.4 GHz band, may be present (embedded) in your notebook system. This section is only applicable if these devices are present. Please refer to the system label to verify the presence of wireless devices.

Wireless devices in your system are only qualified for use in the United States of America if the system label includes an FCC ID number.

This Device has been evaluated to comply with RF exposure requirement for general use limit in portable condition. It is safe to be used in sold condition.

This Transmitter must not be collocated or operated in conjunction with any other antenna or transmitter, except for the installed Bluetooth transmitter.

Operation of the device is subject to the following two conditions: (1) this device may not cause harmful interference, and (2) this device must accept any interference received, including interference that may cause undesired operations.

Wireless devices are not user-serviceable. Do not modify them in any way. Modification of a wireless device will void the authorization to use it. Please contact the Manufacturer for service.



### [Product Warranty]

This product is made through strict quality management and inspections.

If a malfunction arises in normal use conditions, you will receive free service during the warranty period.

If the warranty period has expired, or if the nature of the service is deemed to be a charged service, then you will be charged service fees.

If you request repairs, please present this warranty document.

This warranty will not be issued again, so keep it in a safe place.

This warranty is only valid in Korea.

The following warranty period shall apply.

Main body	Accessories
-----------	-------------

6 months	Adaptor, battery
----------	------------------

2 months	Earphone, various genders, pouch, hand strip
----------	--

1 year	Excluded	User manual, gifts
	from	
	warranty	

Product name	mbook
--------------	-------

Model name	m1
------------	----

Model No.
-----------

Serial No. (S/N)
------------------

Customer	Name
	Address

Tel
-----

Location of purchase	Name
	Address

Tel
-----

Name
------

Date of purchase	(MM/ DD/ YY)
------------------	--------------

Manufacturer	Name	UMID
--------------	------	------

(responsible
--------------

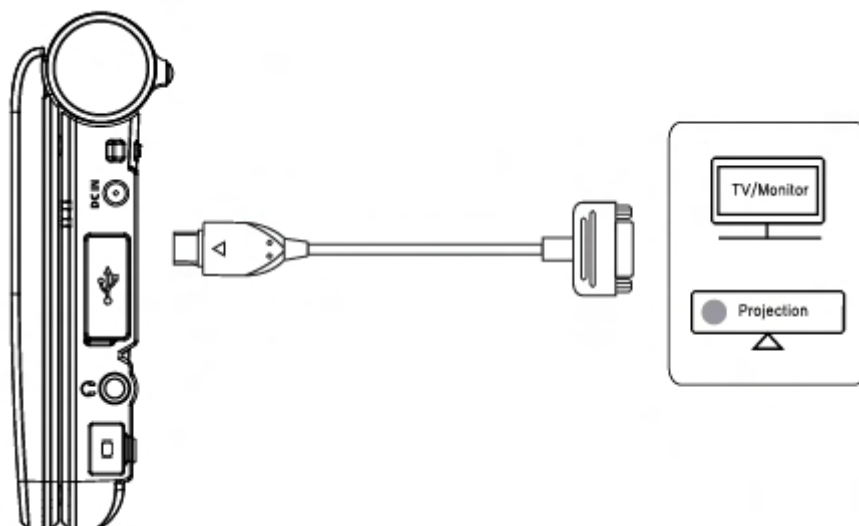
for	Address
-----	---------

warranty)
-----------

412 and 413 Tech Building SKN Techno Park, 190-1 Sangdaewon-dong, Jungwon-gu, Seongnam-si, Gyeonggi-do
--

### VGA cable

VGA output port: You can connect an external display device to the mbook, such as a monitor, a projector, or a TV, when you need to give a presentation or watch videos or movies.



**MID**  
mobile lifestyle