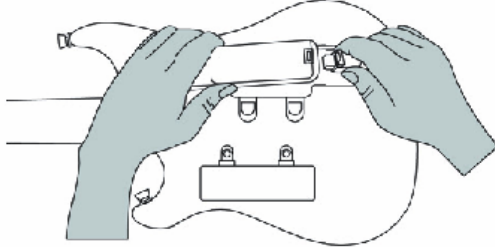


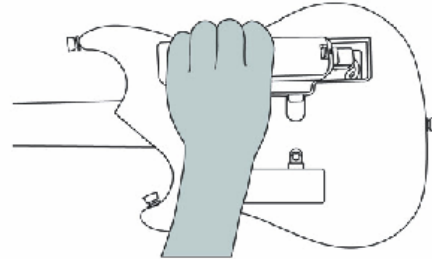
User Manual

Connect the Universal Guitar

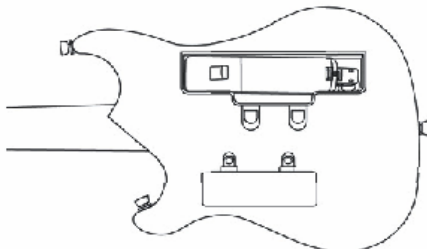
Make sure the Wii™ Remote has been synchronized with the Wii™ console. Please see the Wii™ console manual for information on synchronizing. Ensure the Wii™ Remote batteries are charged.



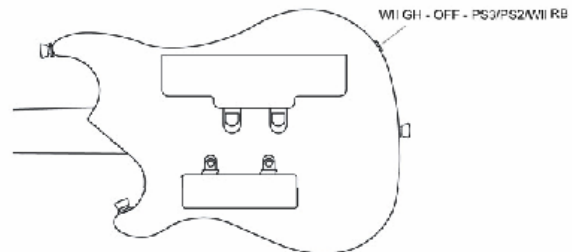
1. Switch on the Wii™ Remote. Turn the Guitar controller over so it is lying face down. Open the Wii™ Remote cover on the back of the Guitar controller. Connect the Wii™ Remote connector plug from the Guitar controller to the socket at the base of your Wii™ Remote.



2. Insert the Wii™ Remote into the Guitar controller. You may need to adjust the connection cable so the Wii™ Remote sits correctly. The buttons on the Wii™ Remote should be face down so they are positioned for control from the front of the Guitar controller.



3. Feed the wrist strap from the Wii™ Remote into the space provided, replace the cover and lock it into place.



4. Check the switch located on the side of the Guitar controller. You will find three (3) options to choose from: "WII GH - OFF - PS3/PS2/WII RB". Please switch it to the proper position according to the game you are going to play.

OPTION 1: To play the Wii™ Guitar Hero™ 3 and World Tour™ game, turn on the Wii™ console power and start rocking out!

OPTION 2: To play the PS2/PS3 Guitar Hero / Rock Band and Wii™ Rock Band game, please follow the steps below.

5. Make sure the game console is OFF.

6. Insert the included receiver into one of the USB ports on the console. Turn the console ON. The receiver has four (4) BLUE game indicators and one (1) RED connection indicator located on the top of it. The red LED will illuminate indicating a proper connection has been made. If no connection has been made, the red LEDs will begin to flash indicating the receiver is searching for the Guitar controller.

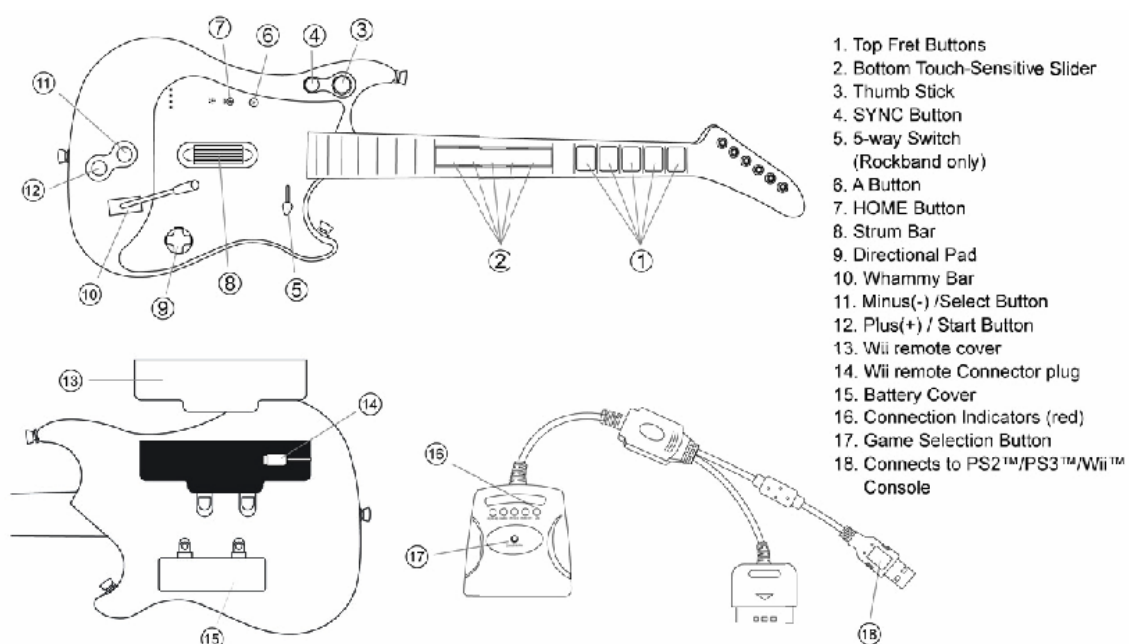
7. Press the "game Selection" button in the center to select the game you are going to play with. Push the blue game indicator once, the indicator will be lighted on different positions. Please push one by one until the proper game indicator is on.

7. Switch the Guitar controller to the "PS3/PS2/WII RB" setting. The red LED will begin to flash indicating the Guitar controller is searching for the receiver. Once the Guitar controller and receiver have successfully synchronized, the LED on the Guitar controller will turn off and the red connection indicators on the receiver will turn solid red.

IMPORTANT: Before turning the Wii™ Guitar Hero™ III or World Tour game ON, please unplug the receiver from the Wii™ console first. Otherwise, the Guitar controller will not function properly.

The Guitar controller is now ready to use. Please see the game manual to understand the various functions of the Guitar controller since these will vary depending on the game.

GUITAR CONTROLLER LAYOUT



According to Waste of Electrical and Electronic Equipment (WEEE) directive, WEEE should be separately collected and treated. If at any time in future you need to dispose of this product please do NOT dispose of this product with household waste. Please send this product to WEEE collecting points where available.