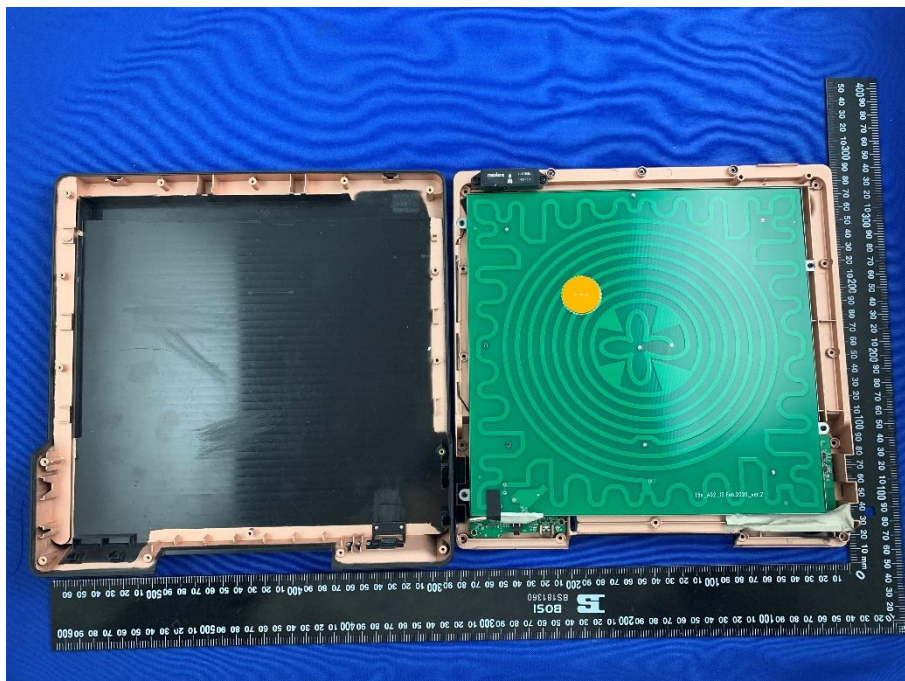


# EUT INTERNAL PHOTOS

EUT UNCOVER VIEW

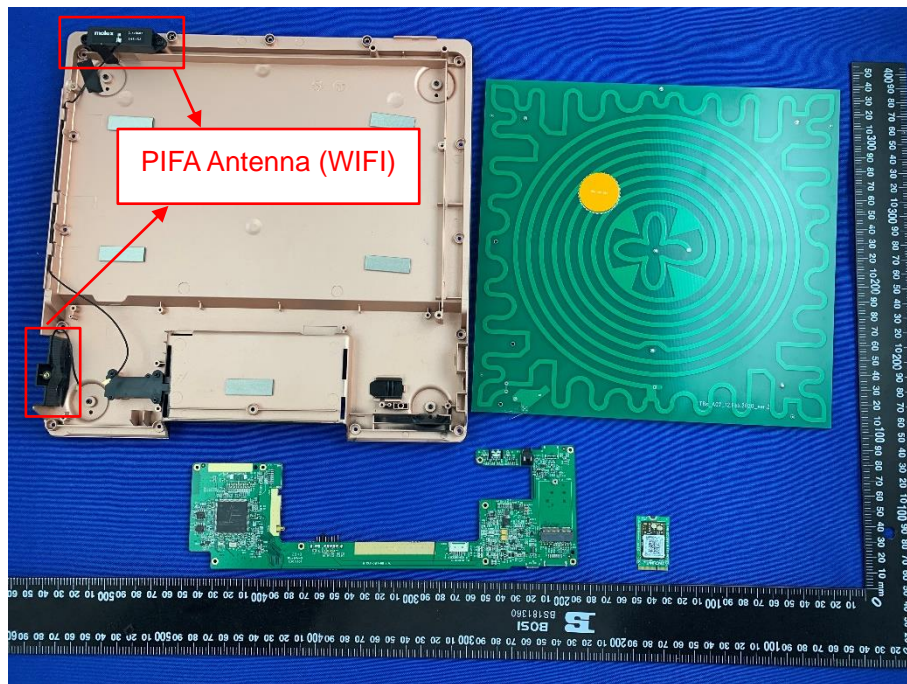


EUT UNCOVER VIEW

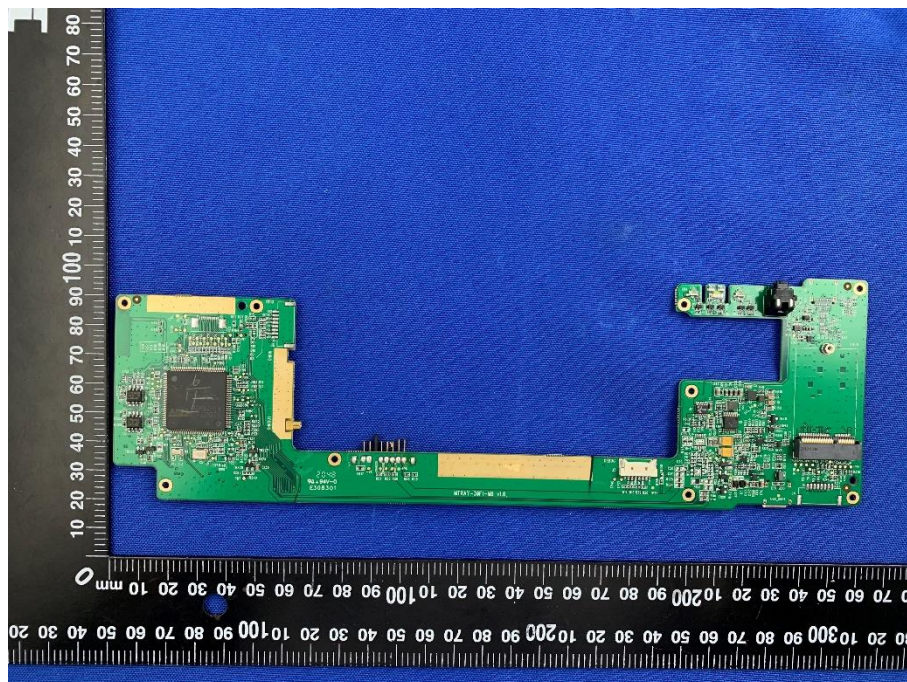




## EUT UNCOVER VIEW

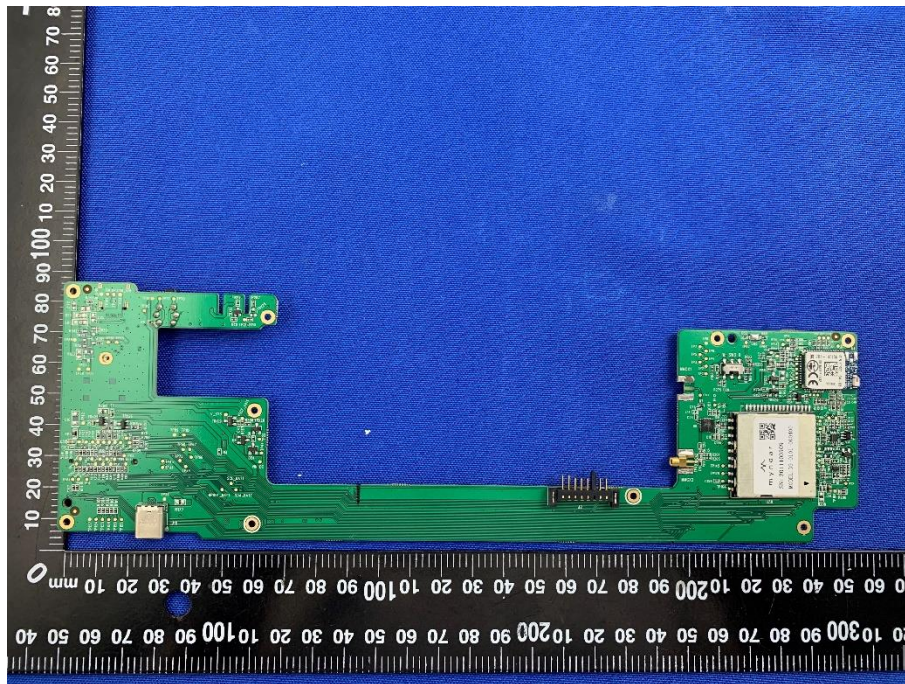


## MAIN BOARD TOP VIEW

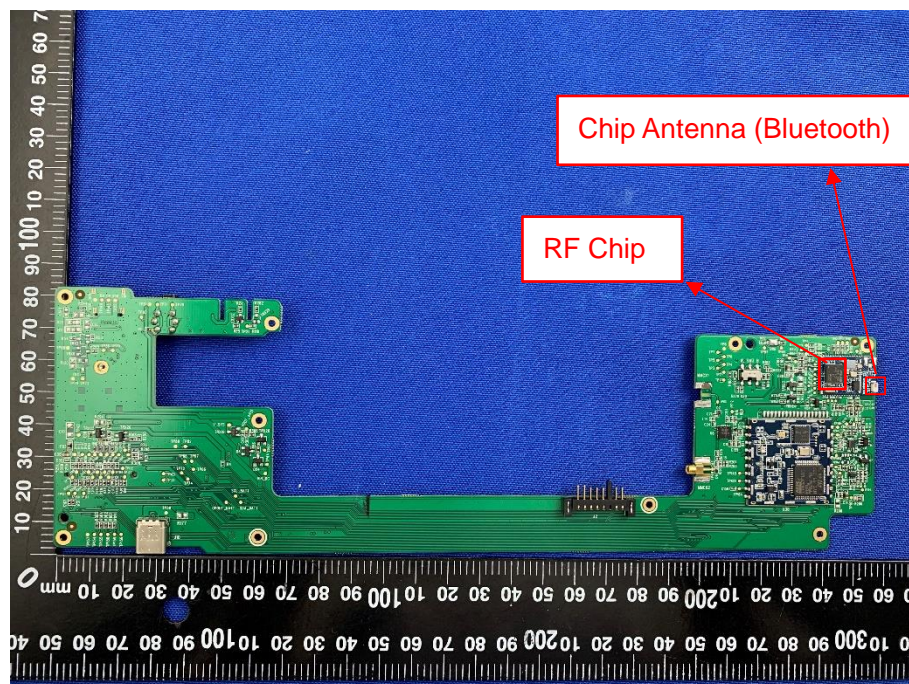




### MAIN BOARD REAR VIEW (WITH SHIELDING)

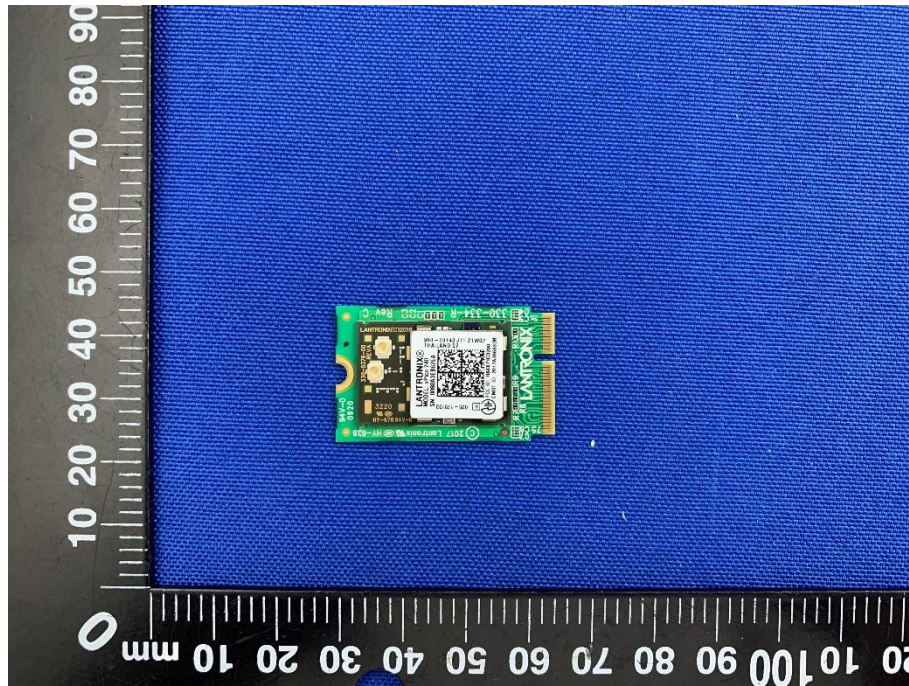


### MAIN BOARD REAR VIEW (WITHOUT SHIELDING)

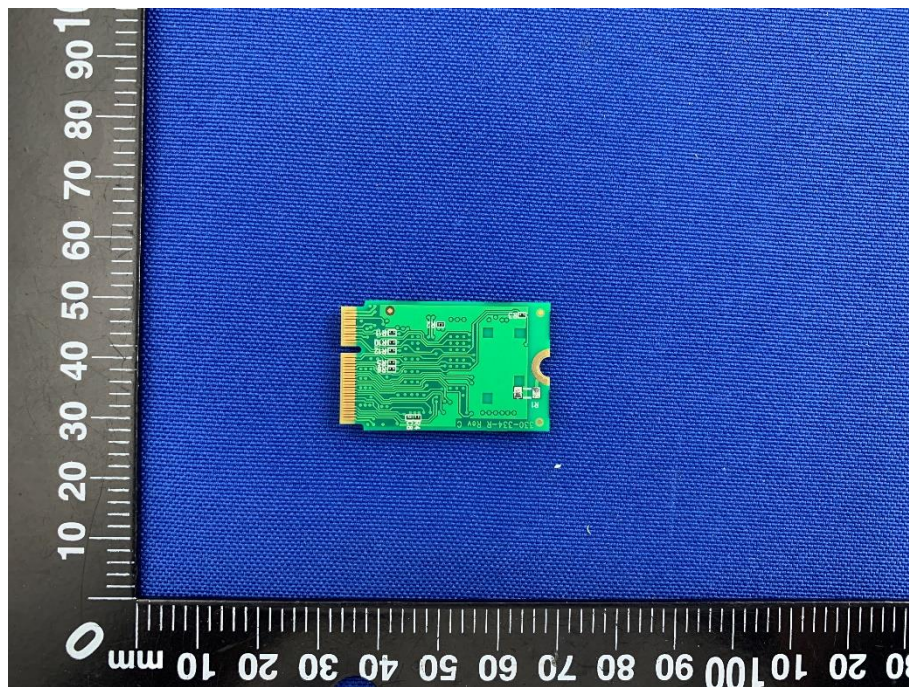




SUB BOARD 1 TOP VIEW (WITH SHIELDING)

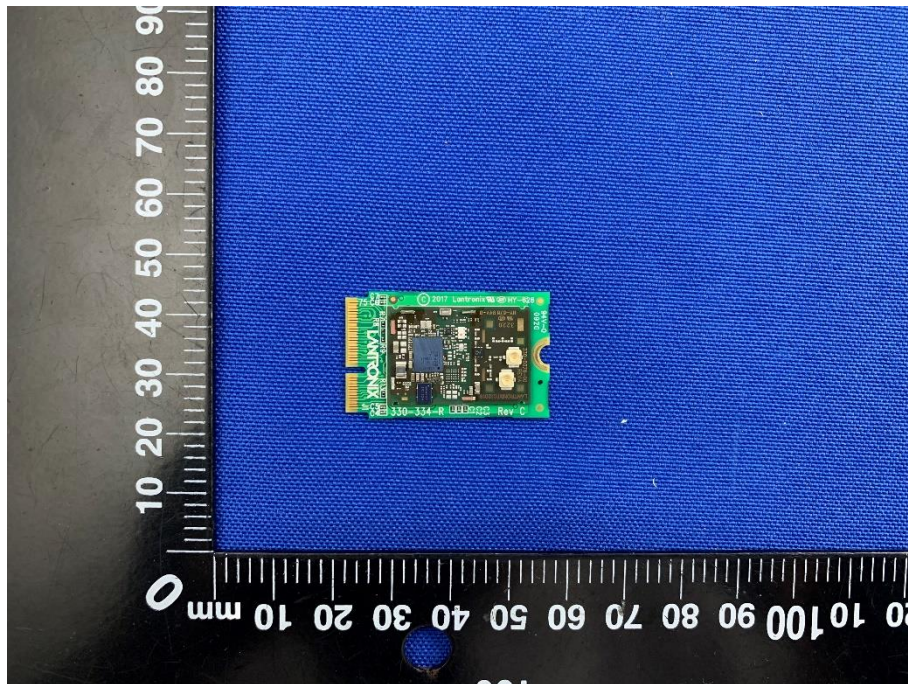


SUB BOARD 1 REAR VIEW

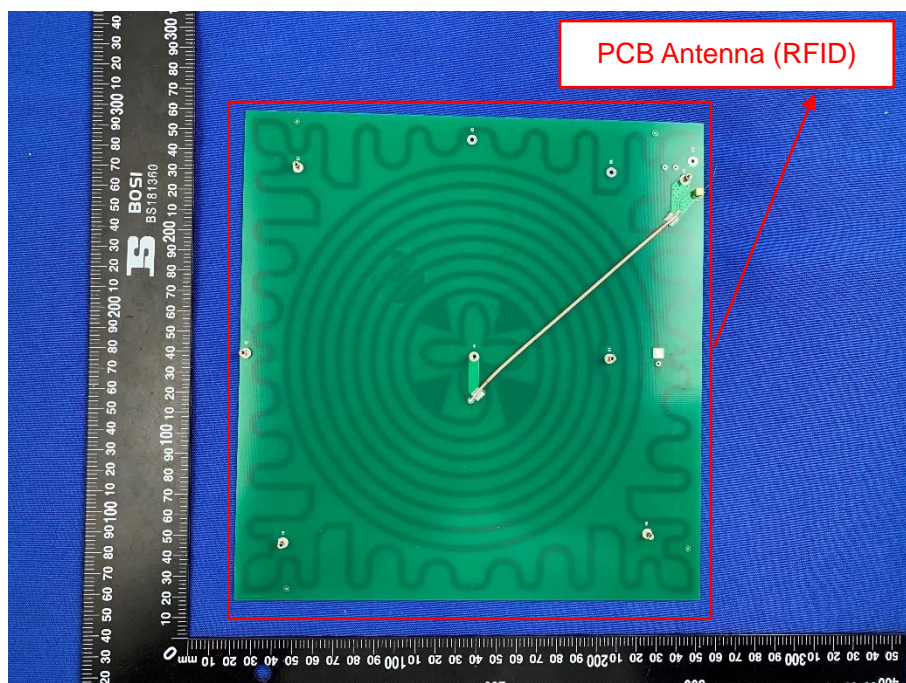




## SUB BOARD 1 TOP VIEW (WITHOUT SHIELDING)



## SUB BOARD 2 TOP VIEW





## A black, rectangular electronic device, possibly a camera or sensor module, resting on a blue textured surface. The device has a central lens area and a small circular component near the bottom edge. A ruler is visible along the left side for scale.

