




User Manual

Wireless Mouse

SMS-09B1/ SMS-09D1

Warnings

- 1. Do not disassemble or attempt to repair the unit
- 2. Do not expose it to liquid, humidity, moisture or temperatures outside the specified operation range of 0℃~40℃.
- 3. **Caution:** Risk of explosion if battery is replaced by an incorrect type. Dispose of used batteries according to the instructions.
- 4. USB receiver powered by PC with USB 2.0 port.
- 5. For use only with AAA battery

Correct Disposal of this product	
	<p>This marking indicates that this product should not be disposed with other household wastes throughout the EU. To prevent possible harm to the environment or human health from uncontrolled waste disposal, recycle it responsibly to promote the sustainable reuse of material resources. To return your used device, please use the return and collection systems or contact the retailer where the product was purchased. They can take this product for environmental safe recycling.</p>

Wireless Mouse
SMS-09B1/ SMS-09D1

Package Content

Before to start the product installation please check if in the box there are the following items:

- ◆ Mouse
- ◆ USB Nano Receiver
- ◆ 1 x Alkaline batteries (Size AAA)
- ◆ Carrying Pouch
- ◆ Quick Start Guide
- ◆ Warranty Card

If one or more item should be missed or damaged please contact your local dealer for warranty replacement.

System Requirements

In order to use the product it is necessary a computer with the following specifications:

- ◆ PC IBM® or compatible. / One USB port. / Operating System: Windows® 2000, Windows® XP or Windows® Vista.

NOTE: The computer must satisfy the operating system requirements. For more information about it please check the Windows® manuals or the help on-line.

Safety instructions

This device complies with Part 15 of the FCC Rules. Operation is subject to the following two conditions: (1) This device may not cause harmful interference, and (2) This device must accept any interference received, including interference that may cause undesired operation.

Warning: Changes or modifications to this unit not expressly approved by the party responsible for compliance could void the user's authority to operate the equipment.

NOTE: This equipment has been tested and found to comply with the limits for a Class B digital device, pursuant to Part 15 of the FCC Rules. These limits are designed to provide reasonable protection against harmful interference in a residential installation. This equipment generates, uses and can radiate radio

frequency energy and, if not installed and used in accordance with the instructions, may cause harmful interference to radio communications.

However, there is no guarantee that interference will not occur in a particular installation. If this equipment does cause harmful interference to radio or television reception, which can be determined by turning the equipment off and on, the user is encouraged to try to correct the interference by one or more of the following measures:

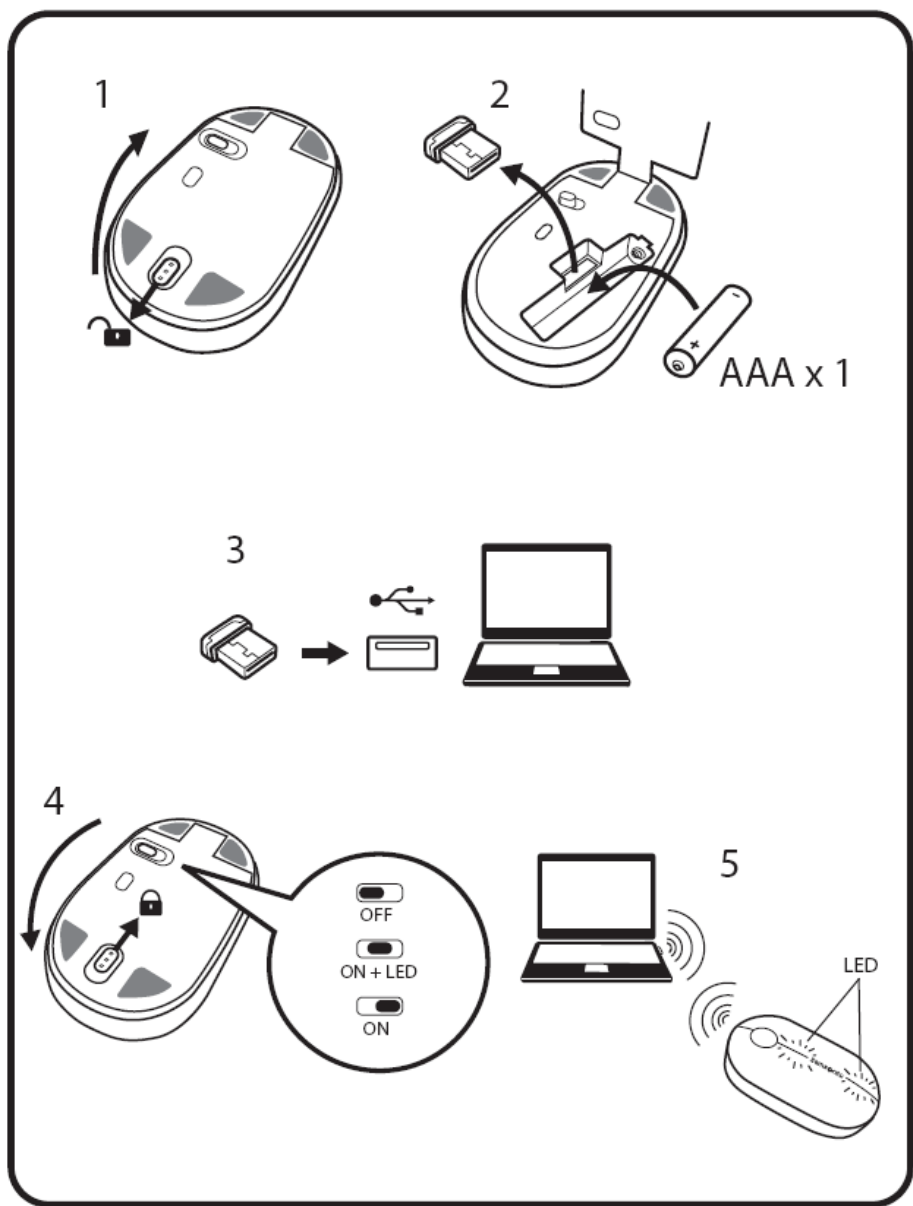
- **Reorient or relocate the receiving antenna.**
 - **Increase the separation between the equipment and receiver.**
 - **Connect the equipment into an outlet on a circuit different from that to which the receiver is connected.**
 - **Consult the dealer or an experienced radio/TV technician for help.**
- ◆ This device meets the requirements of the applicable European directives. The Declaration of Conformity (DoC) is available at <http://www.me-ontravel.com>

Warranty – Terms and conditions

Please kindly refer to the include warranty card for more details.

Nortek reserves the right to modify or cancel the present programme

Wireless Mouse
SMS-09B1/ SMS-09D1



Usage

I. Battery Installation

- 1. Unlock the bottom cover of the mouse by pushing the switch to the unlock position as show in the figure on the previous page**
2. Insert one AAA battery, matching the polarity between the battery and the battery compartment.
3. Close the bottom cover and lock it by pushing the switch to the lock position


II. Connection

- 1. Unlock the bottom cover of the mouse by pushing the switch to the unlock position as show in the figure on the previous page**
2. Take out the wireless dongle which has been stored under the mouse
3. Close the bottom cover and lock it by pushing the switch to the lock position
4. Connect the wireless dongle a USB port of your computer (the computer would run hardware installation when you first use the product)

5. Push the power switch on the bottom part of the mouse to ON or ON+LED (if you want LED lights on) to power on the mouse
6. Wait until the installation completed, you mouse should work properly.

Note: push the power switch on the bottom part of the mouse to OFF position if you are not going to use the mouse to save power and to ensure higher product durability.

Made in P.R.C. by N.I.C. Ltd
under license from Samsonite Corporation.
© 2009 Samsonite Corporation
All Rights Reserved.

Samsonite and the  symbol
are trademarks of Samsonite Corporation
www.me-ontravel.com

