

User Manual

U200 EVDO USB Modem

저식 있음: 글꼴: (한글)
맑은 고딕



1. BEFORE USING U200	3
About This User's Manual	3
Product Overview	3
Product Package Contents	3
Introduction to U200 USB Modem	4
Product Features	4
Product handling	5
Configuration.....	5
2. INSTALLATION AND SETUP FOR EASYLINKY	5
Installing Software	5
Setup Program – Windows	6
Setup Program - Mac OS X.....	11
3. USING EasyLinky.....	16
Features	16
Getting Started	17
Connecting	17
4. PREFERENCES EasyLinky	19
General Preferences	19
WWAN Specific Settings	19
VPN Settings.....	20
Update settings	21
Additional Features	22
5. INSTALLING U200	26
Recommended System Requirements	26
Remove the Modem from your Computer.....	27
Using the USB Modem Extension USB cable	27
Trouble Shooting	27
CARE AND MAINTENANCE.....	27
WARRANTY	28
SAFETY INFORMATION	오류! 책갈피가 정의되어 있지 않습니다.
Regulatory Notice	오류! 책갈피가 정의되어 있지 않습니다.

1. BEFORE USING U200

About This User's Manual

You will find all the information you need to install and use the U200 in this user manual. Before using the U200, you must properly install the modem by closely following the installation instructions.

Instructions

- Install the EasyLinky software by inserting the U200 USB Device into your PC. The installation software is included in the U200 modem memory. When you insert the U200 into your computer, the installation process will automatically begin.
- It is highly recommended that you read the safety precautions described in this manual before using the U200.

Documents Included on your Modem Memory

- Broadband Usage Conditions, Terms & Conditions
- User Manual

Product Overview

Thank you for purchasing U200 USB Modem.

The U200 is a high-speed wireless device that enables your computer to connect to 3G high-speed wireless network.

The U200 is simple to install and use.

Product Package Contents

The following items are included in the product package. If any of the items listed below are missing, please contact the retail location where you purchased the product.



Introduction to U200 USB Modem

The U200 is designed for the USB port on your computer, which is available in most PC models. The U200 can be used to access the Internet, send and receive e-mail. It is extremely useful when you are away from home, on the road, or wherever wired Internet access is not readily available.

Product Features

- Power management: The U200 utilizes power management and system overhead reduction functions provided by the USB interface for maximum power savings.
- Antenna design: Efficient, innovative design optimizes data transfer rate and sensitivity to network signals.
- Extension USB cable connector: Connect the USB cable to your computer to increase RF performance, and to solve clearance issues.
- USB Modem that supports Type A USB Port interface.
- Supports North American PCS (1900 MHz) and Cellular (800 MHz) bands.
- Utilizes Qualcomm QSC6085 chipset.

- Supports high-speed network technologies.
- Supports Windows XP, Vista, 7 and Apple Macintosh systems with installed EasyLinky software and driver.

Product handling

- Do not place any adhesive labels on the USB connector. It may leave a sticky residue that can cause problems inside the PC USB port.
- The U200 USB device should easily slide into the USB port. Do not force the U200 into the USB port as it may cause damage to the modem and/or the port.
- Keep the U200 in a dry and clean place. (Storage temperature: -22°F to 149°F [- 30°C to 65°C]). Keep your device away from liquids, dust and excessive heat.

Configuration

To use the U200, you should install the EasyLinky software included in the modem memory and configure the U200 USB device. See the next section for more information on software installation and USB device configuration.

This section will guide you through the installation and setup process for EasyLinky. Before getting started, you should become familiar with the documentation that came with your USB Modem.

2. INSTALLATION AND SETUP FOR EASYLINKY

This section will guide you through the installation and setup process for EasyLinky. Before getting started, you should become familiar with the documentation that came with your USB Modem.

Installing Software

Warnings

- Make sure to complete the unplugging/ejection process before removing the U200. If you remove the device improperly, the modem may be damaged.

Notes

- If you have inserted the device properly, Windows will inform you of the new hardware. Wait until Windows completes the "Found New Hardware" task.

Note: In Windows 2000, several windows similar to “Found New Hardware” window can appear and disappear automatically. In Windows XP, several tool tips similar to the “Found New Hardware” function will appear and disappear in the system tray automatically. In Windows Vista, several tool tips similar to the “Installing device driver software” function will appear and disappear in the system tray automatically. Once hardware detection is complete, you will be prompted to start activation.

- It is normal to hear a short beep sound each time you insert or remove the U200. It is an audible notification that your PC recognizes the new hardware.

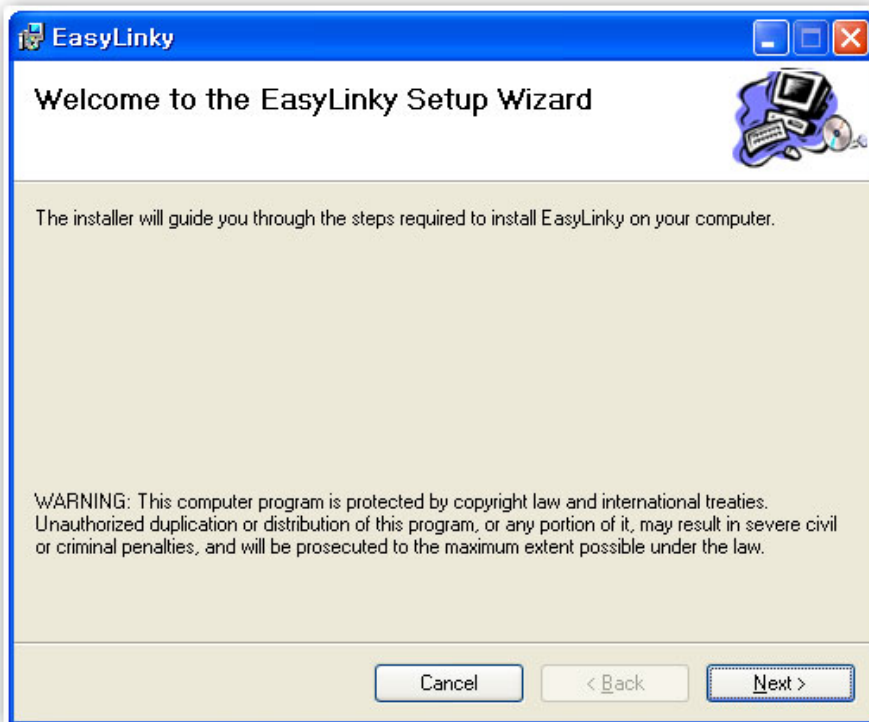
Getting Started (Windows)

To install the EasyLinky software:

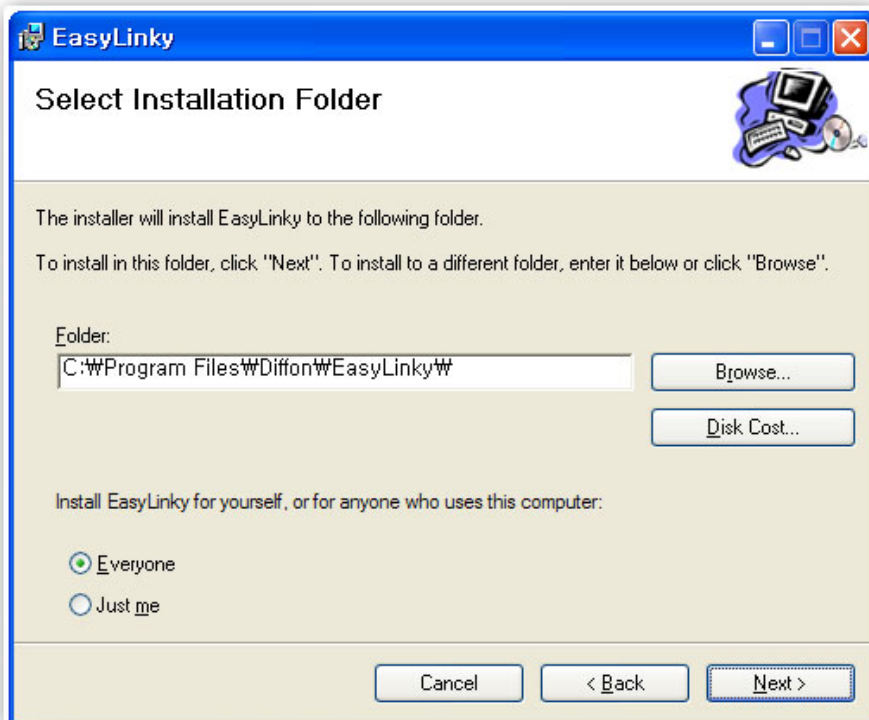
1. Turn on your computer then close all applications.
2. Insert the U200 modem into your USB port.
3. Your computer will recognize U200 modem and start the installation sequence automatically. If the program does not launch automatically, go to my computer and select the ‘3Gstick’ drive and double click ‘start.exe’ program.
4. Follow the steps in the next section.

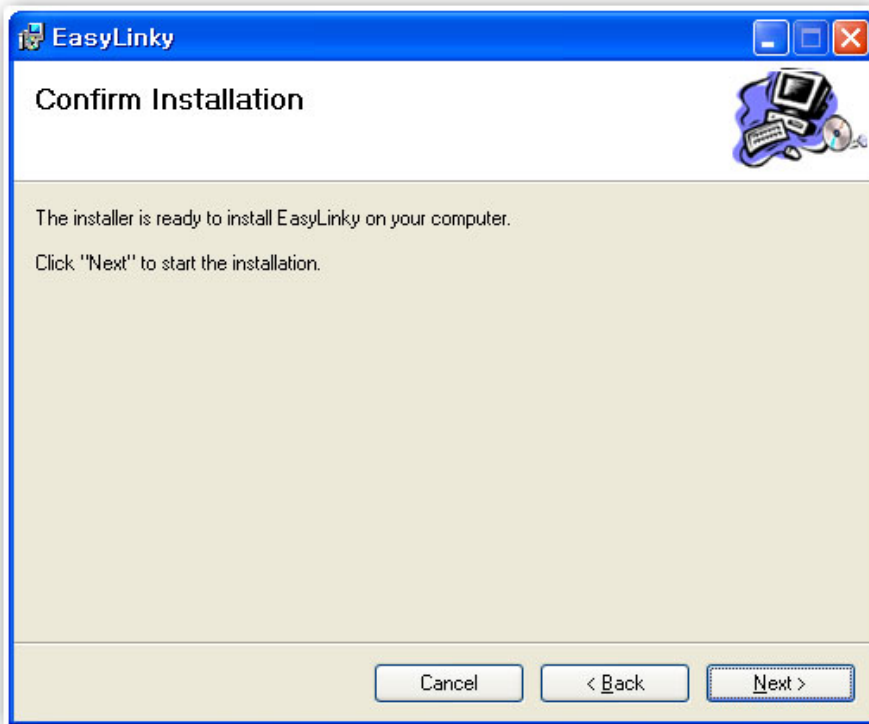
Setup Program – Windows

STEP 1: The “Welcome to the EasyLinky Setup Wizard” screen appears. Click the [Next] button to continue with the installation process.

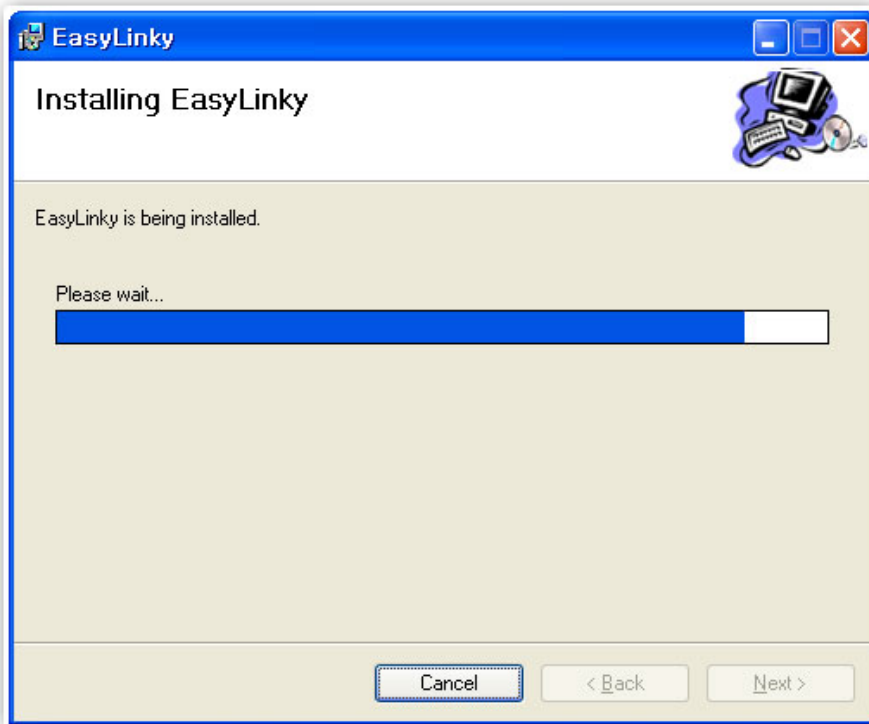


STEP 2: You are now ready to select the location on your computer where EasyLinky should be installed. It is recommended that you do not modify the default destination folder. Click the [Next] button to continue.

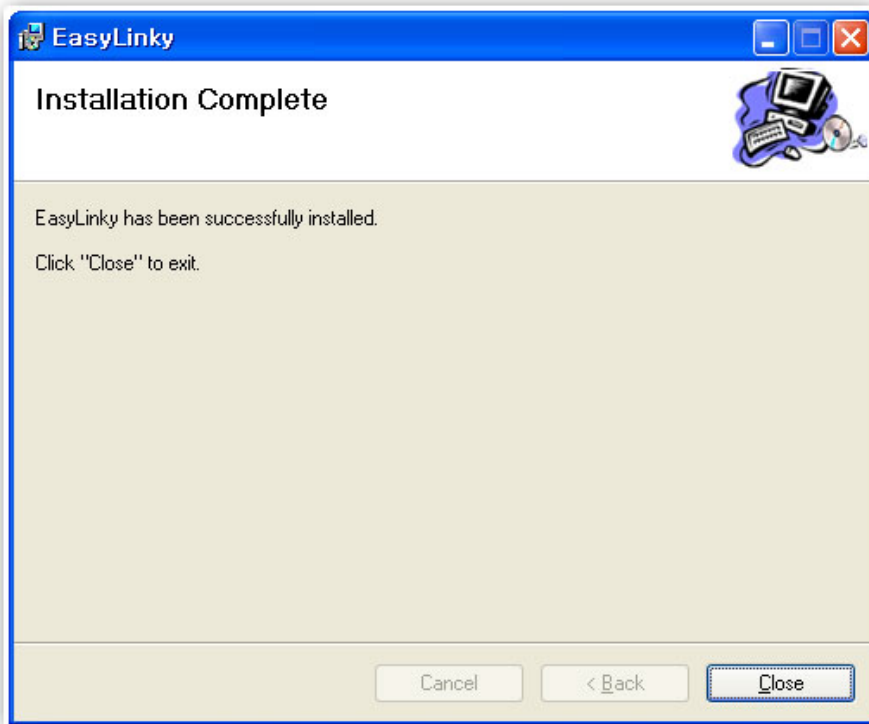




STEP 3: During this step the components of EasyLinky product are being installed onto your computer. Installation will occur to the destination folder specified in Step 2.



STEP 4: Installation of EasyLinky is now complete. Click the [Close] button to leave the EasyLinky setup program and begin using your new software.



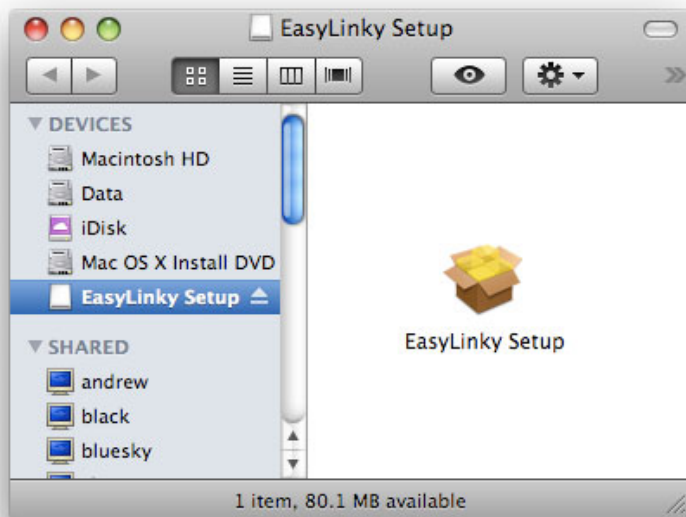
*The setup program will automatically create a EasyLinky shortcut on your desktop.

STEP 5: Please wait while U200 is installed and ready to use.

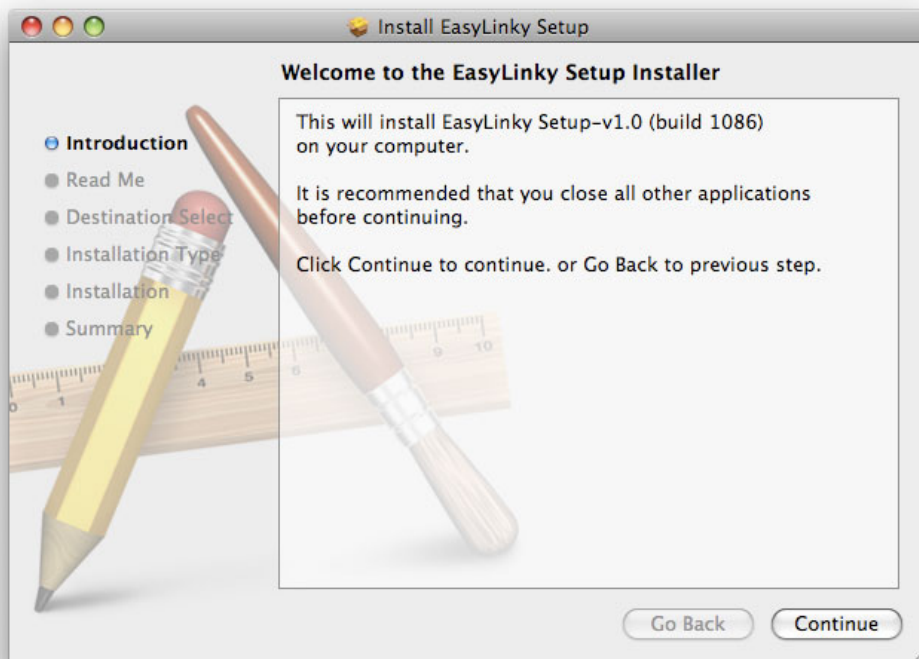


Setup Program - Mac OS X

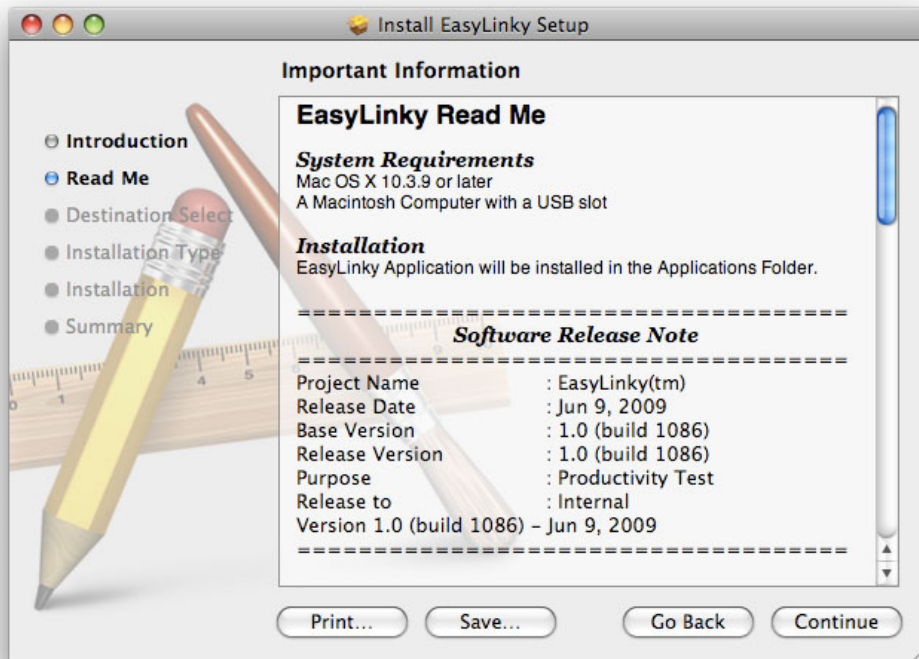
STEP 1: Insert U200 into the PC, then U200CD disk drive should be automatically mounted. Double click U200CD icon on the Desktop. Double click the EasyLinky Setup icon to launch the installer.



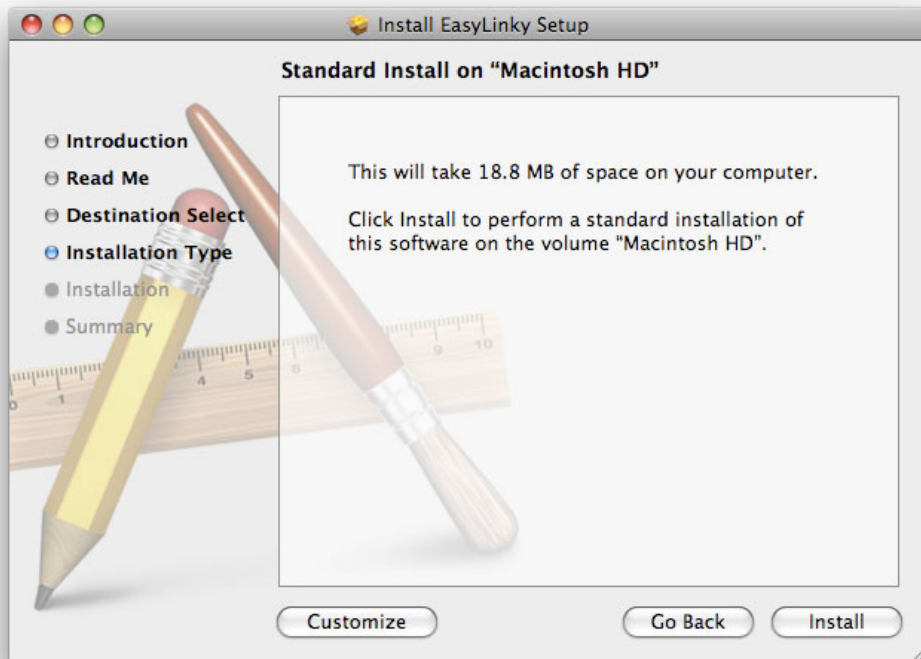
STEP 2: Click [Continue] button in the welcome window to proceed with the installation.



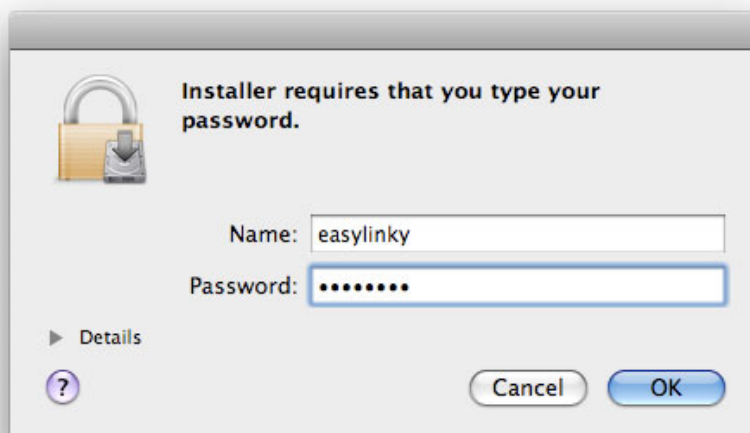
STEP 3: The Read Me file appears. Click the [Continue] button.



STEP 4: Click "Install" to begin the standard installation on system volume

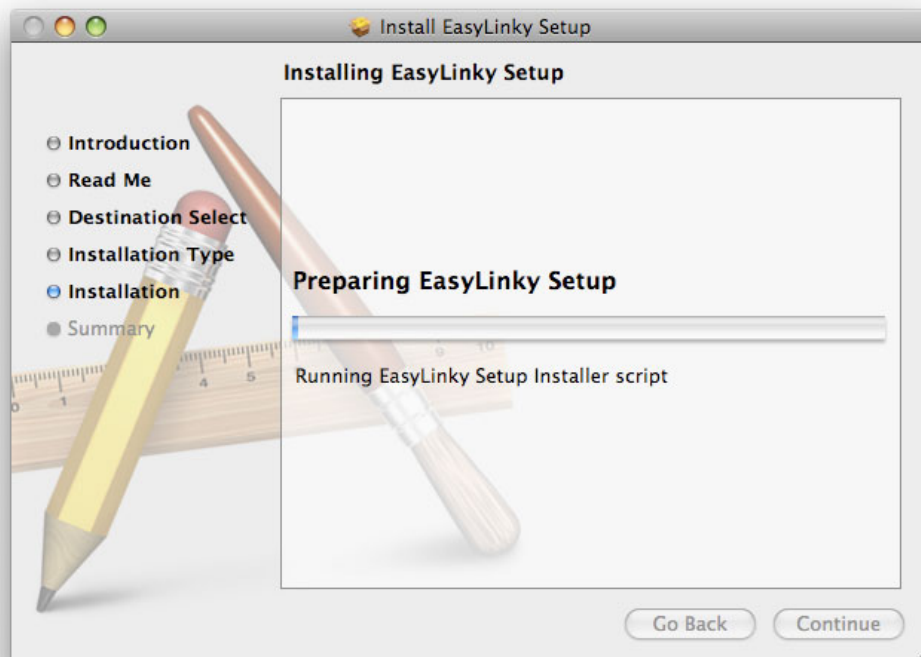
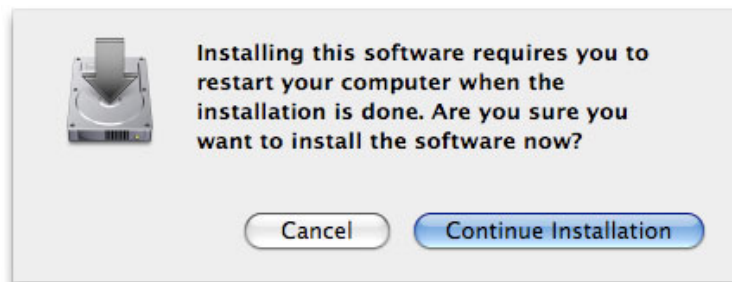


STEP 5: Finally, the Setup Wizard shows confirm window, click the [OK] button to continue.

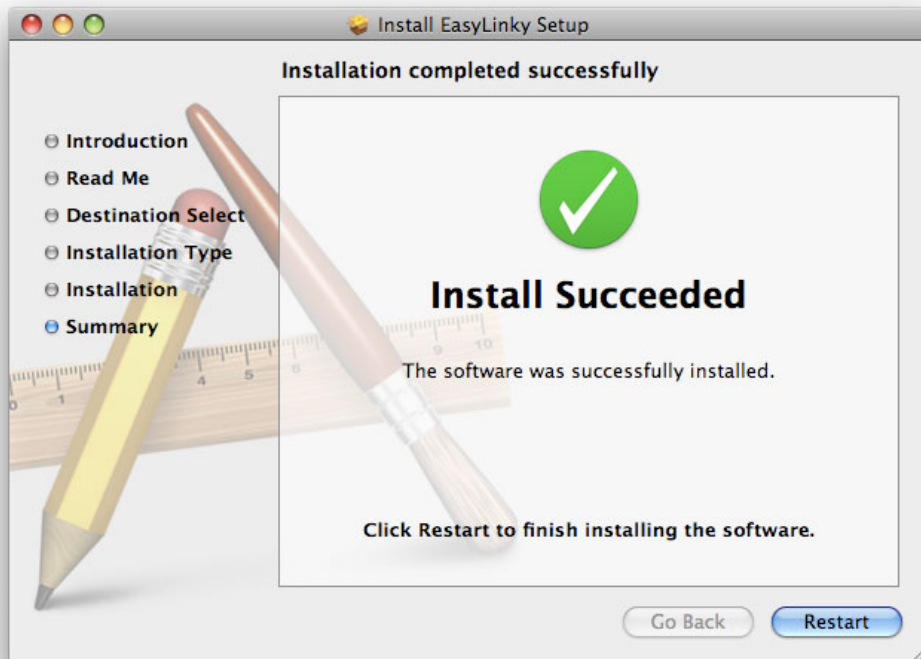


Enter the Name/Password used to log into the computer then click 'OK'.

STEP 6: EasyLinky installation begins.



STEP 7: Installation is now complete. Click 'Restart' button to close the setup wizard. Then OS is restarted.



3. USING EasyLinky

Today's online world offers more services everyday and Wireless gives you the tools you need to take advantage of the best in connectivity solutions. With EasyLinky, enjoy the freedom and convenience of wireless Internet connectivity from your laptop computer!

Features

WWAN(Wireless Wide Area Network, 1xEV-DO/1xRTT/CDMA) Specific Features:

- Configures your PC to use your USB Modem.
- Creates a Data Connection if using an EVDO capable USB Modem.
- Copies utility to create wireless copies of your dial-up connections, if supported by your device.
- Test function for WWAN device.

※ A WWAN capable device is required to use the WWAN features. Individual WWAN features are also device dependent as described in the WWAN section above.

Other Features:

- Logs connections used, duration and bytes sent and received.
- See the section “Additional Features” for more information about the features of EasyLinky.

Getting Started

Double click on the EasyLinky icon on your desktop or click on the Windows Start menu and select EasyLinky from the list of programs.



About the Wireless Networks View

EasyLinky will open the Broadband Networks window by default. This view is where you manage your Broadband connections. The Broadband Networks window displays all currently available network connections.

At a glance you can see the signal strength. Your current connection state and the elapsed time of the connection are displayed along the bottom of the status bar.



Connecting

Once your device is properly configured, connecting to the Internet is as simple as clicking the “Connect” button.

Once connected, the “Connect” button will change to “Disconnect”.

Simply click this to end your current connection. To connect to any other network shown,

select it, and then select "Connect".

The Status Bar

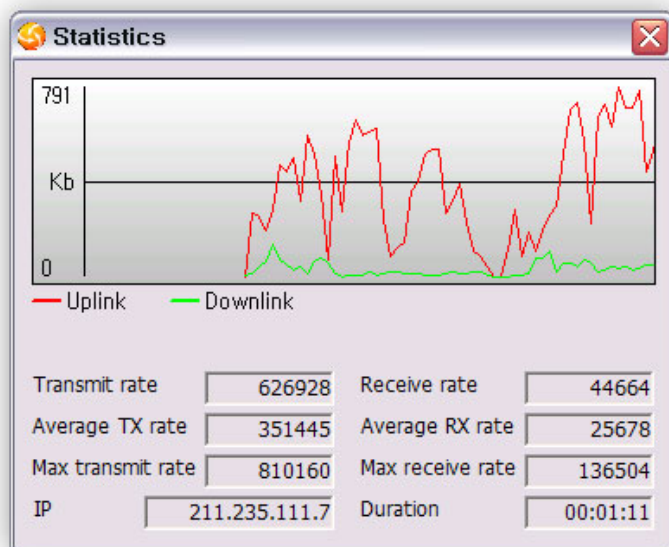
Information regarding your current network connection can be seen in the status bar along the bottom of EasyLinky interface. For more information on this status bar, see the section "The Status Bar" in the "Additional Features" section.

EasyLinky will display status information at the bottom during the connection process as well as while connected.

When not connected, the status text in the lower left corner will display "Not connected" for the currently selected network. The timer will display "00:00:00". Once connected, the status text will display "Connected" and the timer will begin to run.

Right clicking on the tray icon provides various options and double clicking on it will always show the application. Placing your cursor on it will display the current connection status.

Based on your preferences, your browser can be launched automatically upon connection. At any time during your connection you can check your current connection speed and throughput stats in the Statistics window. To see this window, select "Statistics" from the "Session" menu.



Using the "Data" connection:

By default EasyLinky enables the software for data connections.

If your connection fails when you try to connect, please try to reconnect.

Dormancy:

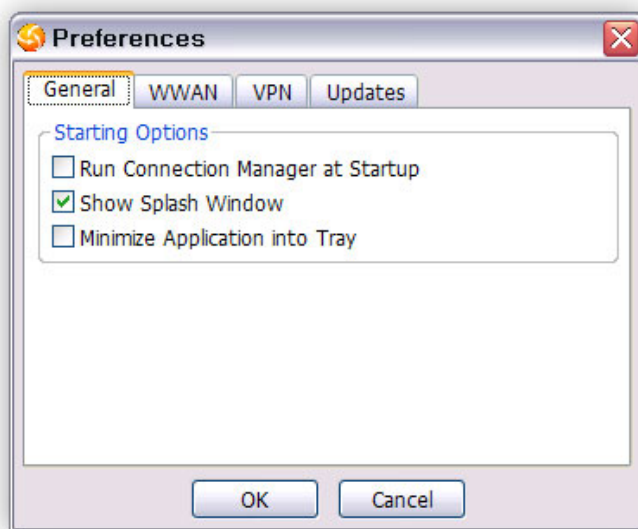
The data session becomes dormant if you are not sending or receiving any data. As soon as you resume sending or receiving data, the data session will return to an active state.

4. PREFERENCES EasyLinky

General Preferences

Click on [Options], then [Preferences].

General Tap



Run Connection Manager at Startup: If this option is checked the EasyLinky starts automatically when Windows starts.

Show Splash Window: Display splash window when EasyLinky starts.

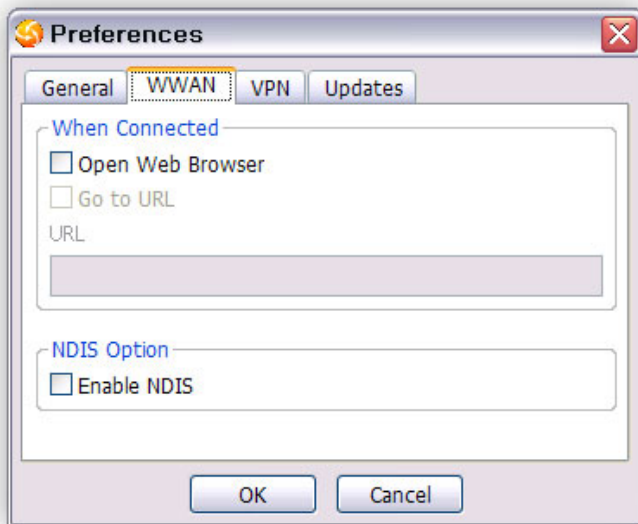
Minimize Application into Tray: When you minimize the application it will now appear in the Windows task bar. To restore the application click on EasyLinky tray icon, and select [Open].

- Click the [OK] button.

WWAN Specific Settings

WWAN preferences

This is used to set various WWAN connection settings.



Open Web Browser: When data connection is established successfully, EasyLinky executes default web-browser automatically.

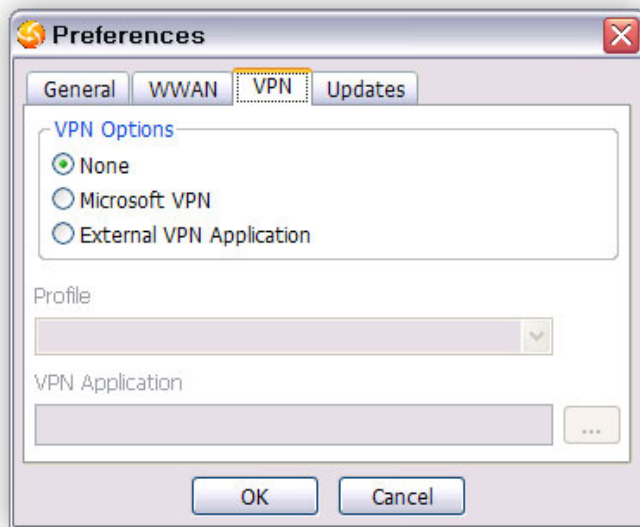
Go to URL: To enable web-browser go to web site you defined using URL field below.

URL: Website URL for starting page of web browser started automatically upon connecting to the EasyLinky network.

NDIS Option: When enabled, NDIS provides an internet connection always.

- Click the [Ok] button.

VPN Settings



VPN Options

- **None:** Do not use VPN.
- **Microsoft VPN:** Use VPN client of Microsoft Windows.
- **External VPN Application:** Use other VPN client application provided another vendor.

Profile (Microsoft VPN only)

Select Microsoft VPN Profile.

External VPN Application

Specify other VPN client application. To choose the application from your local disk,

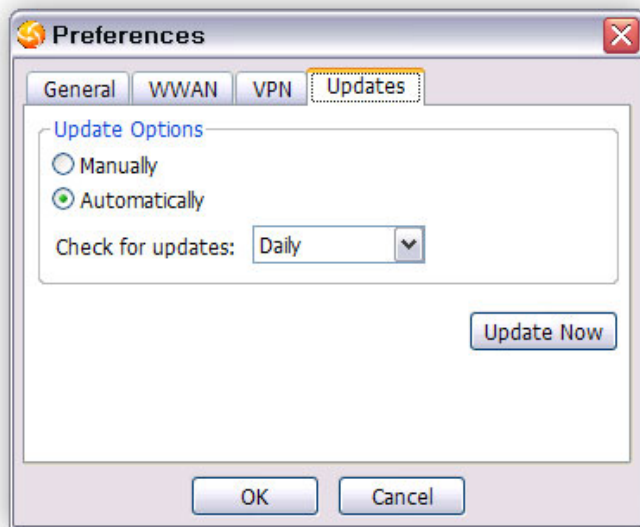


click " " button.

- Click the [Ok] button.

Update settings

This feature allows EasyLinky software to check for software updates and it can be updated manually or automatically.



- **Manually:** If you choose this option, the software will only check for update when you select "Update Now" button or select "Help", then "Check for updates" from main screen.
- **Automatically:** You can allow the software to automatically check for updates, daily, weekly, or monthly. It only checks when the application is running and when it detects that you are connected and able to access the Internet.

Additional Features

In addition to the basic features mentioned in previous sections, EasyLinky has the additional features listed below.

Status Bar

The details of your current connection can be seen in the status bar at the bottom of EasyLinky interface. This status bar is always visible when the interface is fully expanded.



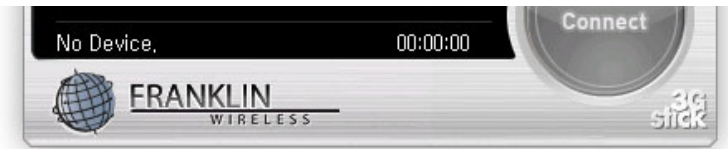
Connection Status

The text on the status bar reflects your current state. During an active connection, this text will change to “Connected”. If you are not connected, it will display “Disconnected”.

WWAN USB Modem Status Area

The text can change to the following:

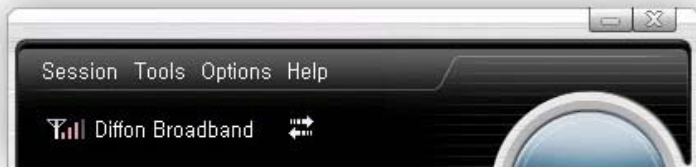
- **No Device:** Your WWAN USB Modem is removed from the laptop.



- **Device not activated:** Your USB Modem needs to be activated. Select “Activation” from the Tools menu.



Throughput

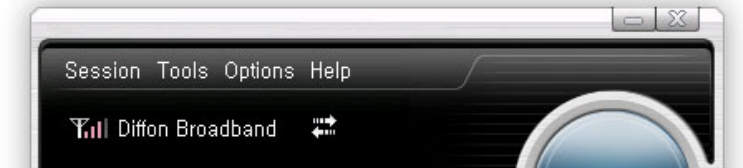


The amount of data that you have sent and received since the current network connection was initiated can be seen by holding the mouse over.

Elapsed Time

The amount of time that has elapsed since the current network connection was initiated is tracked on the lower left side of the status bar.

The Session Menu

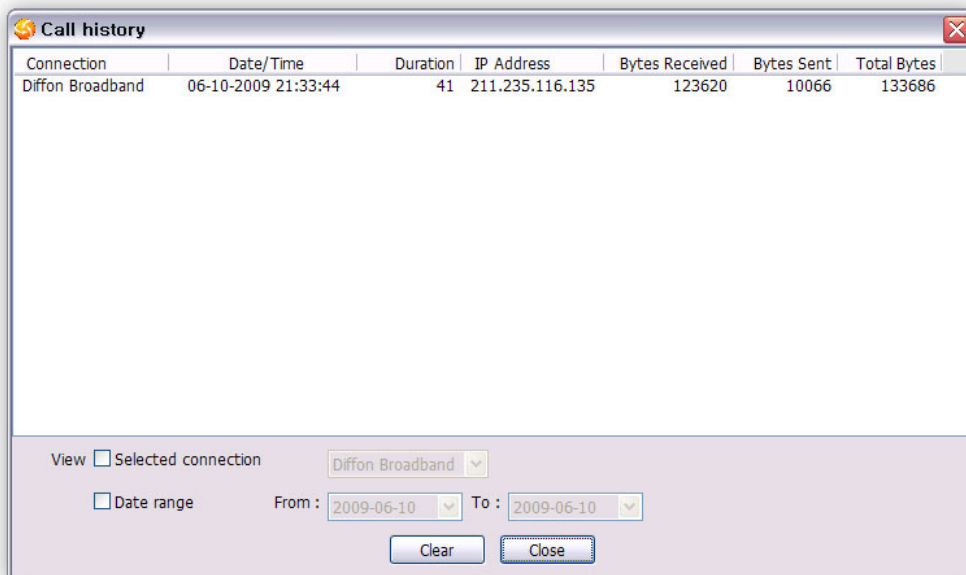


Connect / Disconnect: You can connect or disconnect the wireless networks.

The Tools Menu

Log: This provides a concise session log of your network activity. Click on a column heading to sort the log. This window also displays the total number of sessions as well as the total time connected.

The information displayed in the Usage log can be customized using the controls that appear just below the list.



To view only the connection history of a specific network type, check the "Selected connection" checkbox and select the desired type from the drop-down list.

To view only the connections made during a specific interval, check the "Date range" checkbox and specify the date in the "From:" and "To:" fields.

To clear the log, press the Clear button.

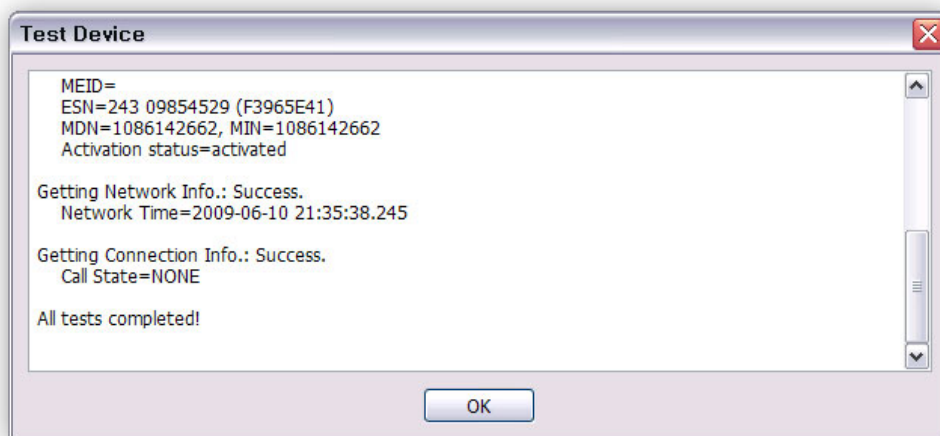
Note that clearing the log cannot be undone.

Close: Close the log window.

Activation: Programs the activation code, phone number, and IMSI(MIN) to the USB Modem.



Test WWAN Device: Retrieve and display detailed information about your WWAN device (1xEV-DO/1xRTT/CDMA USB Modem) such as CM port, model, MEID, MDN, etc. This information can be valuable when troubleshooting a problem.



The help Menu

The EasyLinky has a Help section.

Please see the Help section for additional questions.



5. INSTALLING U200

Recommended System Requirements

To successfully install and use the U200 USB device in your PC, the following system specifications are required.

Item	Required Specification
Operating system	Windows® Vista/ Windows® XP/ Windows® 2000 Mac OS X 10.3.9 or higher
Port	Type A USB port
Processor	150MHz or faster
Memory	128 MB
Disk space	32 MB
Dial-up networking	DUN bound to TCP/IP

※ The U200 is useful for computers that include a USB port. Voice service is not supported.

Remove the Modem from your Computer

- Remove the U200 from your laptop. When removing the modem, always grip the sides of the modem and pull carefully.

Using the USB Modem Extension USB cable

- The U200 modem package includes an extension USB cable. Although the USB cable is not required for use with your U200 modem, it offers increased performance for your modem under certain operating conditions. Connect the USB cable to USB ports of your computer.

Trouble Shooting

The following is a partial listing of errors and possible solutions. Please refer to the Inline Help and the EasyLinky Manager User Manual for a full listing.

1. Ensure that the EasyLinky Connection Manager has been correctly installed on your computer.
2. Ensure that your USB modem has been activated.
3. Ensure that the USB modem is fully plugged into the USB slot.
4. Ensure that the LED light is on; otherwise connect and then reconnect the USB modem.

CARE AND MAINTENANCE

Your device is a product of superior design and craftsmanship and should be treated with care. The suggestions below will help you protect your warranty coverage.

- Keep the device dry. Precipitation, humidity and all types of liquids or moisture can contain minerals that will corrode electronic circuits.
- Do not use or store the device in dusty, dirty areas. Its moving parts and electronic components can be damaged.
- Do not store the device in hot areas. High temperatures can shorten the life of electronic devices, damage batteries, and warp or melt certain plastics.
- Do not store the device in cold areas. When the device returns to its normal temperature, moisture can form inside the device and damage electronic circuit boards.
- Do not attempt to disassemble the device.

- Do not drop, knock, or shake the device. Rough handling can break internal circuit boards and fine mechanics.
- Do not use harsh chemicals, cleaning solvents, or strong detergents to clean the device.
- Do not paint the device. Paint can clog the moving parts and prevent proper operation.
- Use only the supplied or an approved replacement antenna. Unauthorized antennas, modifications, or attachments could damage the device and may violate regulations governing radio devices.

All of the above suggestions apply equally to your device, battery, charger, or any enhancement. If any device is not working properly, take it to the nearest authorized service facility for service.

WARRANTY

Manufacture's Limited One-Year Warranty:

Franklin Wireless (the company) warrants to the original retail purchaser of this device, that should product or any part thereof, during normal consumer usage conditions, be defective in material or workmanship that results in product failure within the first twelve (12) month period from the date of purchase, such defects will be repaired or replaced (with new or refurbished) product at the Company's discretion, without charge for parts and labor directly related to the defect(s). This warranty extends to consumers who purchase the product in the United States or Canada and it's not transferable or assignable. This warranty does not apply to:

- (a) Product subject to abnormal use or conditions, accident, mishandling, neglect, unauthorized alteration, misuse, improper installation or repair or improper storage;
- (b) Products whose mechanical serial number or electronic serial number has been removed, altered, or defaced;
- (c) Damage from exposure to moisture, humidity, excessive temperature or extreme environment conditions;
- (d) Damage resulting from connection to, or use of any accessory or other product not approved or authorized by the company;
- (e) Defects in appearance, cosmetic, decorative or structural items such as framing and non-operative parts;

(f) Product damaged from external causes such as fire, flooding, dirt, sand, weather conditions, battery leakage, blown fuse, theft or improper usage of any electrical source.

The Company disclaims liability for removal or reinstallation of the product, for geographic coverage, for inadequate signal reception by the antenna or for communications range or operation of the cellular system as a whole.

When sending your wireless device to Franklin Wireless' authorized distributions for repair or service, please note that any personal data or software stored on the device may be inadvertently erased or altered. Therefore, we strongly recommend you make a back up copy of all data and software contained on your device before submitting it for repair or service. This includes all contact lists, downloads (i.e. third-party software applications, games and graphics) and any other data added to your device. Franklin Wireless is not responsible for and does not guarantee restoration of any third-party software, personal information or memory data contained in, stored on, or integrated with any wireless device, whether under warranty or not, returned to Franklin Wireless' authorized distributors for repair or service. To obtain repairs or replacement within the terms of this Warranty, the product should be delivered with proof of Warranty coverage (e.g. dated bill of sale), the consumer's return address, daytime phone number and/or fax number and complete description of the problem, transportation prepaid, to the Company at the address shown below or to the place of purchase for repair or replacement processing. In addition, for reference to an authorized Warranty station in your area, please call (800)959-3558 in the United States.

The extent of the company's liability under this warranty is limited to the repair or replacement provided above and, in no event, shall the company's liability exceed the purchase price paid by purchaser for the product.

Any implied warranties, including any implied warranty of merchant ability or fitness for a particular purpose, shall be limited to the duration of this written warranty. Any action for breach of any warranty must be brought within a period of 18 months from date of original purchase, but in no case shall the company be liable for a special consequential or incidental damages for breach of this or any other warranty, express or implied, whatsoever. The company shall not be liable for the delay in pending service under this warranty or loss of use during the time the produce is being repaired or replaced.

No person or representative is authorized to assume for the Company any liability other than expressed herein in connection with the sale of this product.

Some states or provinces do not allow limitations on how long an implied warranty lasts on the exclusion or limitation of incidental or consequential damage so the above limitation or exclusions may not apply to you. This Warranty gives you specific legal rights, and you may also have other rights, which vary from state to state or province to province.

Franklin's Authorized Service Center Address:

9823 Pacific Heights Blvd. Suite

San Diego, CA 92121

SAR INFORMATION

THIS MODEL PHONE MEETS THE GOVERNMENT'S REQUIREMENTS FOR EXPOSURE TO RADIO WAVES.

Your wireless phone is a radio transmitter and receiver. It is designed and manufactured not to exceed the emission limits for exposure to radiofrequency (RF) energy set by the Federal Communications Commission of the U.S. Government. These limits are part of comprehensive guidelines and establish permitted levels of RF energy for the general population. The guidelines are based on standards that were developed by independent scientific organizations through periodic and thorough evaluation of scientific studies. The standards include a substantial safety margin designed to assure the safety of all persons, regardless of age and health. The exposure standard for wireless mobile phones employs a unit of measurement known as the Specific Absorption Rate, or SAR. The SAR limit set by the FCC is 1.6 W/kg. * Tests for SAR are conducted with the phone transmitting at its highest certified power level in all tested frequency bands. Although the SAR is determined at the highest certified power level, the actual SAR level of the phone while operating can be well below the maximum value. This is because the phone is designed to operate at multiple power levels so as to use only the power required to reach the network. In general, the closer you are to a wireless base station antenna, the lower the power output. Before a phone model is available for sale to the public, it must be tested and certified to the FCC that it does not exceed the limit established by the government adopted requirement for safe exposure. The tests are performed in positions and locations (e.g., at the ear and worn on the body) as required by the FCC

for each model. The highest SAR value for this model when tested for use near the body, as described in this user guide, is 1.18 W/Kg. While there may be differences between the SAR levels of various phones and at various positions, they all meet the government requirement for safe exposure. The FCC has granted an Equipment Authorization for this model phone with all reported SAR levels evaluated as in compliance with the FCC RF exposure guidelines. SAR information on this model phone is on file with the FCC and can be found under the Display Grant section of <http://www.fcc.gov/oet/fccid> after searching on FCC ID: XE5-U200. Additional information on Specific Absorption Rates (SAR) can be found on the Cellular Telecommunications Industry Association (CTIA) web-site at <http://www.wow-com.com>.

* In the United States and Canada, the SAR limit for mobile phones used by the public is 1.6 watts/kg (W/kg) averaged over one gram of tissue. The standard incorporates a substantial margin of safety to give additional protection for the public and to account for any variations in measurements.

SAFETY INFORMATION

SAFETY INFORMATION FOR FIXED WIRELESS TERMINALS POTENTIALLY EXPLOSIVE ATMOSPHERES

Turn your phone OFF when in any area with a potentially explosive atmosphere and obey all signs and instructions. Sparks in such areas could cause an explosion or fire resulting in bodily injury or even death.

INTERFERENCE TO MEDICAL DEVICES Certain electronic equipment may be shielded against RF signal from your wireless phone. (pacemakers, Hearing Aids, and so on) Turn your phone OFF in health care facilities when any regulations posted in these areas instruct you to do so. RF signals may affect improperly installed or inadequately shielded electronic system in motor vehicles.

EXPOSURE TO RF ENERGY Use only the supplied or an approved replacement antenna. Do not touch the antenna unnecessarily when the phone is in use. Do not move the antenna close to, or touching any exposed part of the body when making a call.

NEAR BODY OPERATION This device was tested for typical near body operations with the back of the phone kept 0.5 cm from the body. To maintain compliance with FCC RF exposure requirements, it must have a minimum distance including the antenna of 0.5 cm from the body during normal operation

U.S.A.

U.S.FEDERAL COMMUNICATIONS COMMISSION RADIO FREQUENCY INTERFERENCE STATEMENT

INFORMATION TO THE USER NOTE : This equipment has been tested and found to comply with the limits for a Class B digital device pursuant to Part 15 of the FCC Rules. These limits are designed to provide reasonable protection against harmful Interference in a residential installation. This equipment generates, uses, and can radiate radio frequency energy and, if Not installed and used in accordance with the instructions, may cause harmful Interference to radio communications. However, there is no guarantee that interference will not occur in a particular Installation. If this equipment does cause harmful interference to radio or television reception, which can be determined by turning the equipment off and on, the user is encouraged to try to correct the interference by one or more of the following measures:

- *- Reorient or relocate the receiving antenna. Increase the separation between the equipment and receiver.
- *- Connect the equipment into an outlet of a circuit different from that to which the receiver is connected.
- *- Consult the dealer or an experienced radio/TV technician for assistance.

Changes or modification not expressly approved by the party responsible for Compliance could void the user's authority to operate the equipment. Connecting of peripherals requires the use of grounded shielded signal cables.