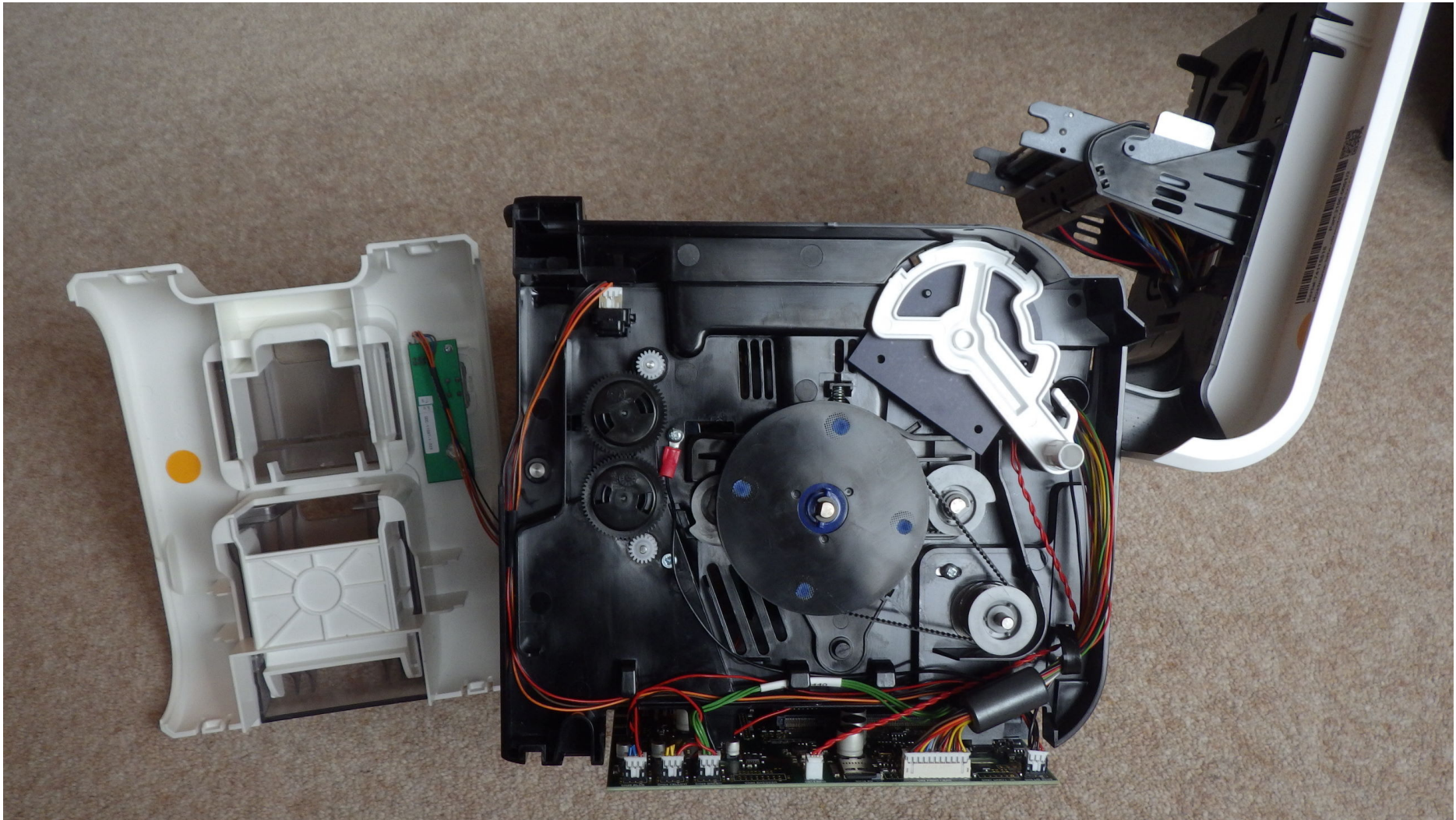


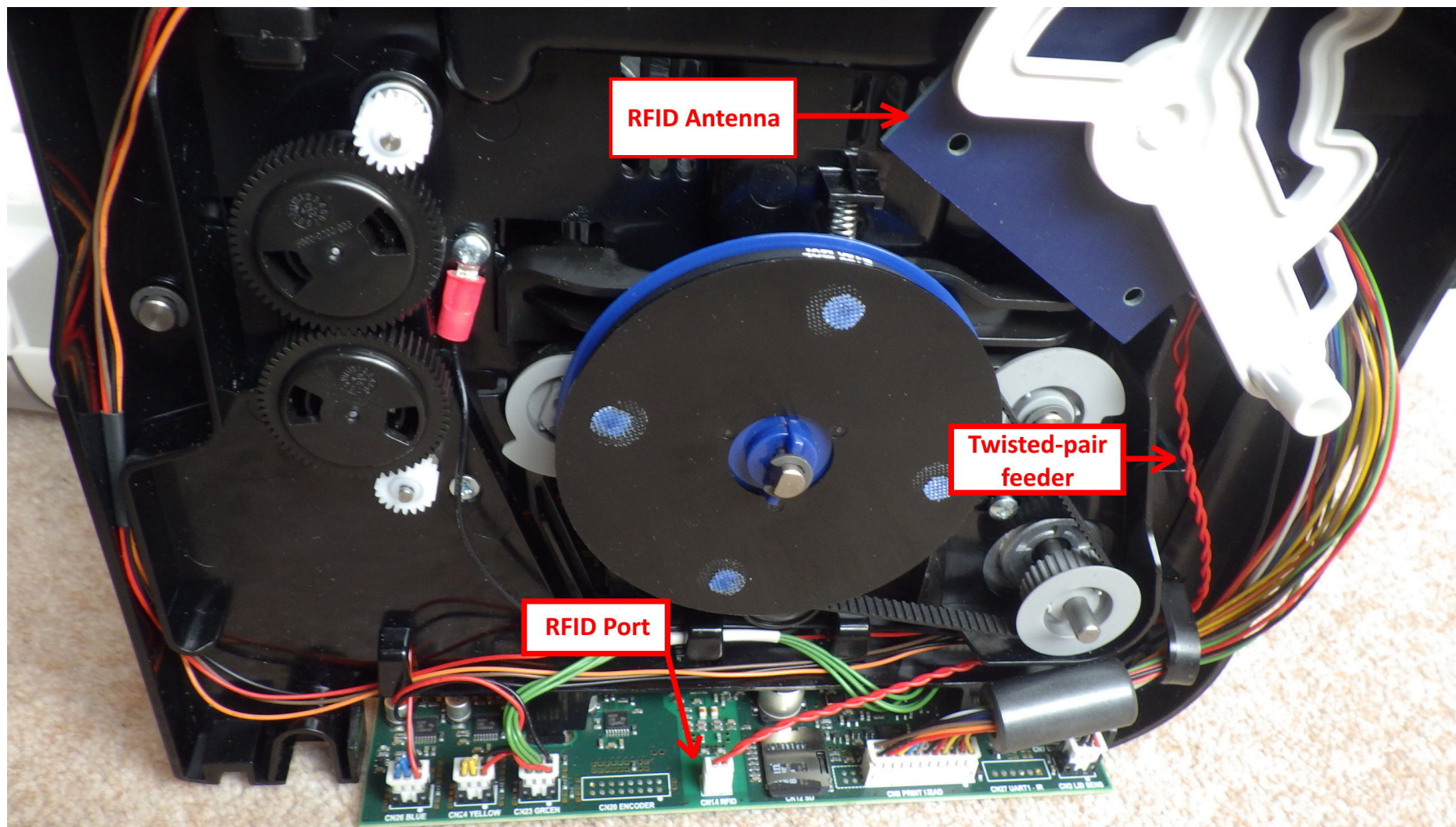
**XDW5000-0001 Internal Photos**



*Right side viewed with lid open and front panel connected*



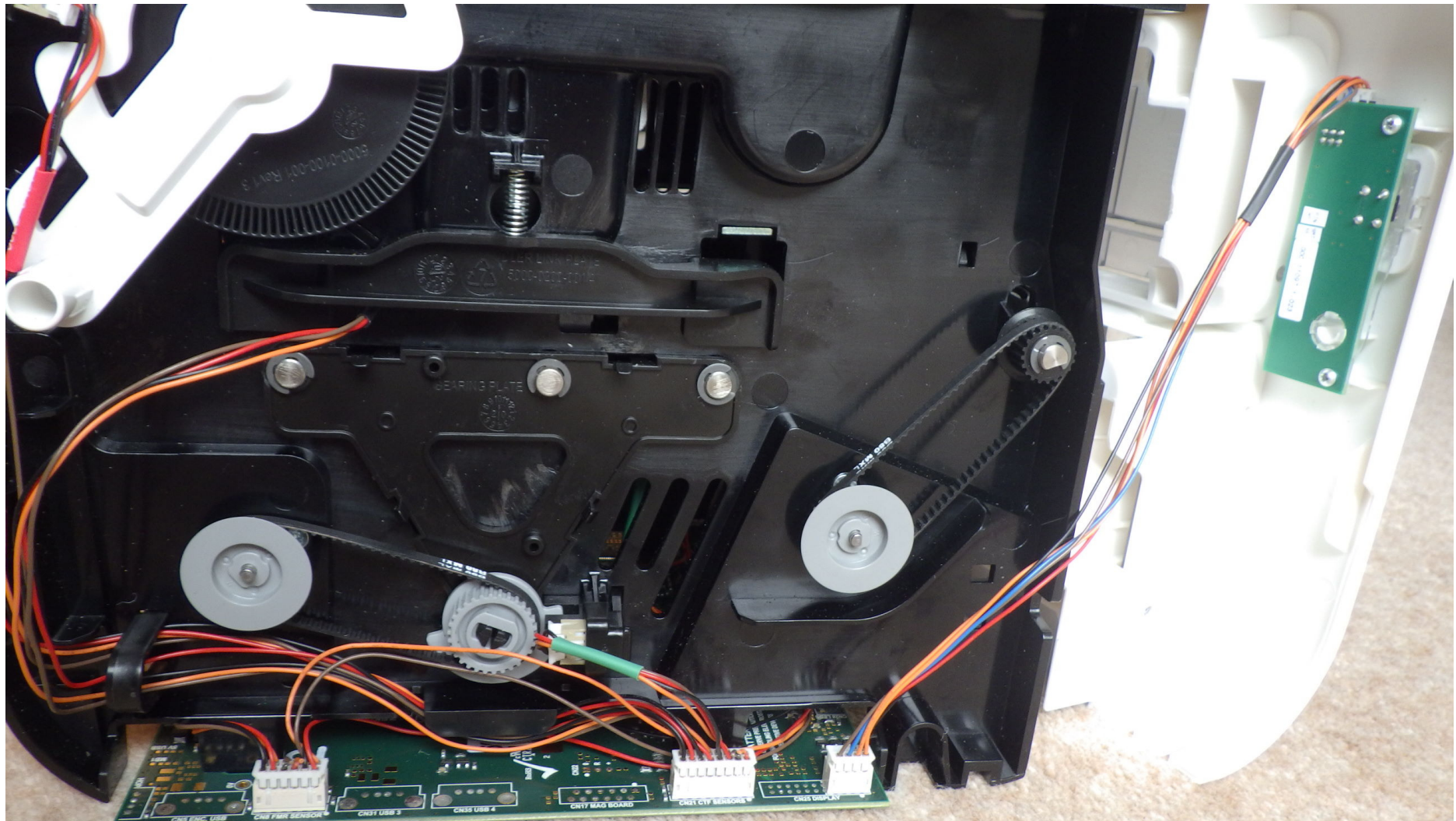
XDW5000-0001 Internal Photos



*Right detail – showing RFID elements*

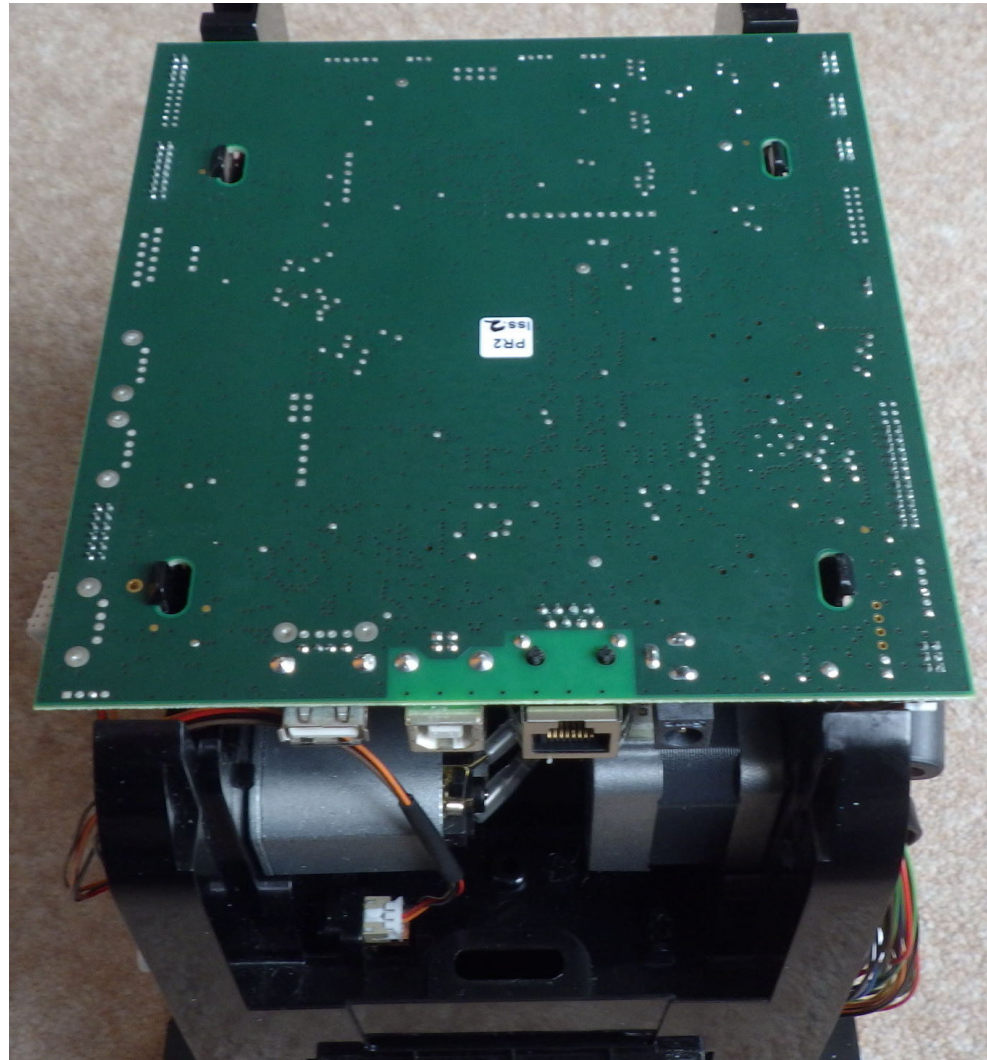


## XDW5000-0001 Internal Photos



*Left side with front panel connected (on/off button and LED indicators)*

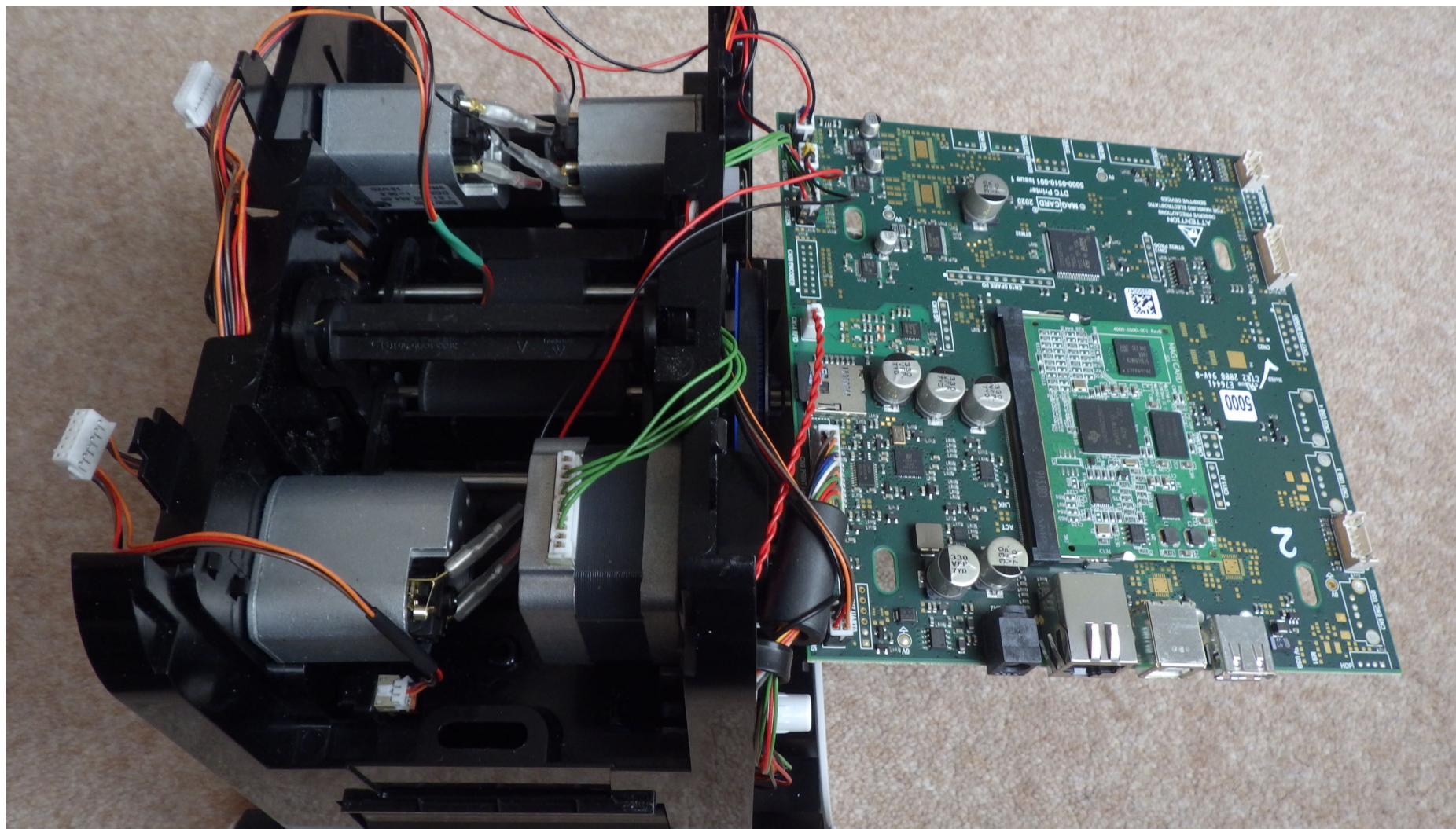
## XDW5000-0001 Internal Photos



*Underside – showing Main PCB external connections*



## XDW5000-0001 Internal Photos



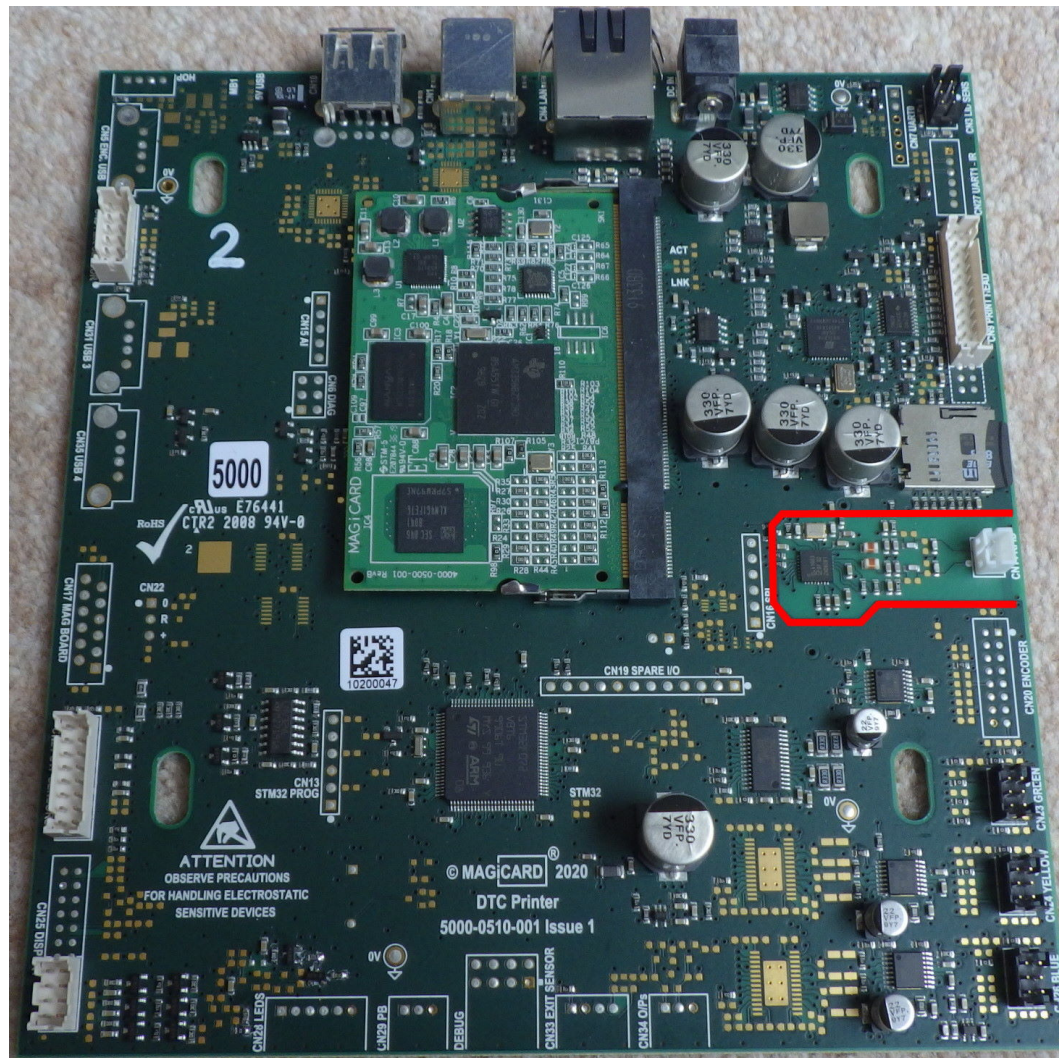
*Underside with Main PCB partially disconnected and turned over to show detail*





*RFID antenna close-up (lifted from mounting position and turned to show detail)*

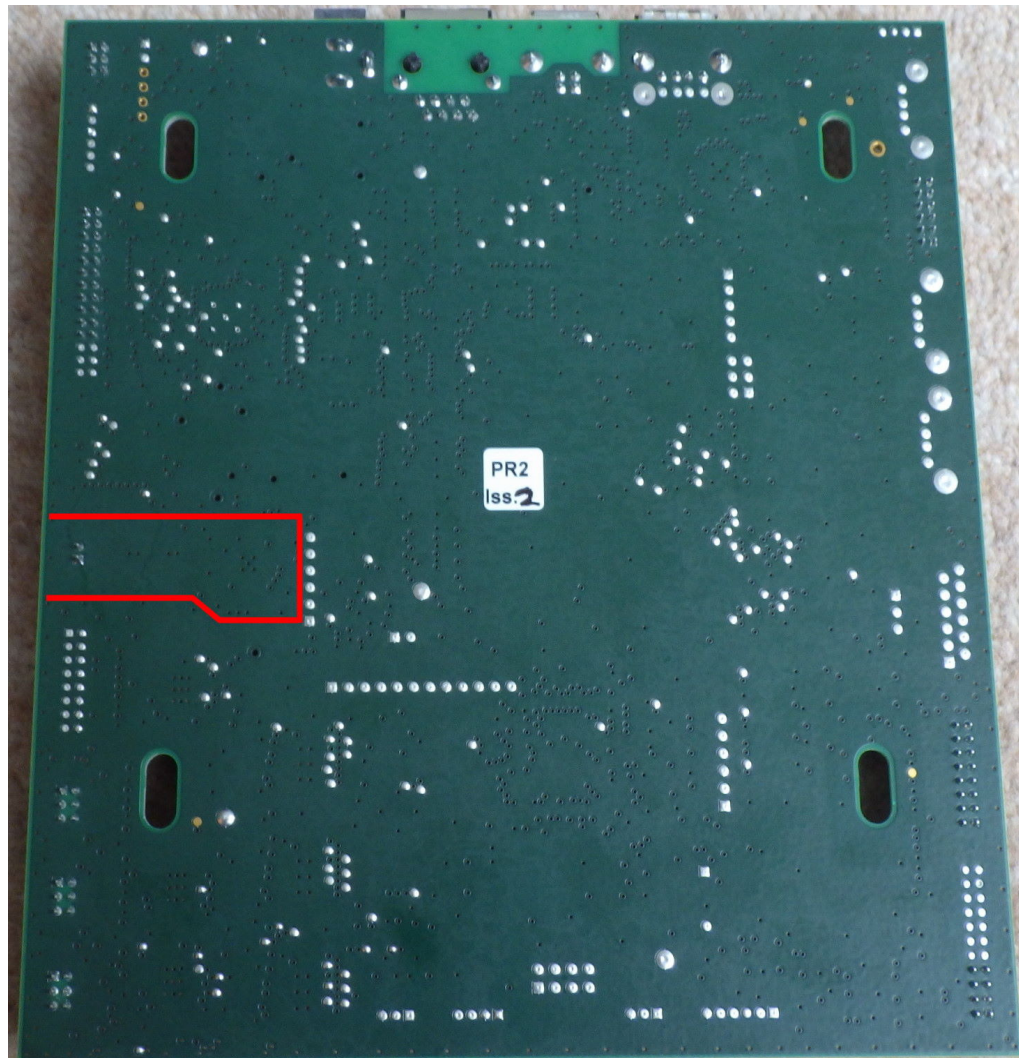
## XDW5000-0001 Internal Photos



Main PCB top view - RFID area highlighted within red line



# XDW5000-0001 Internal Photos



*Main PCB underside (RFID circuitry located within area bounded by red line)*