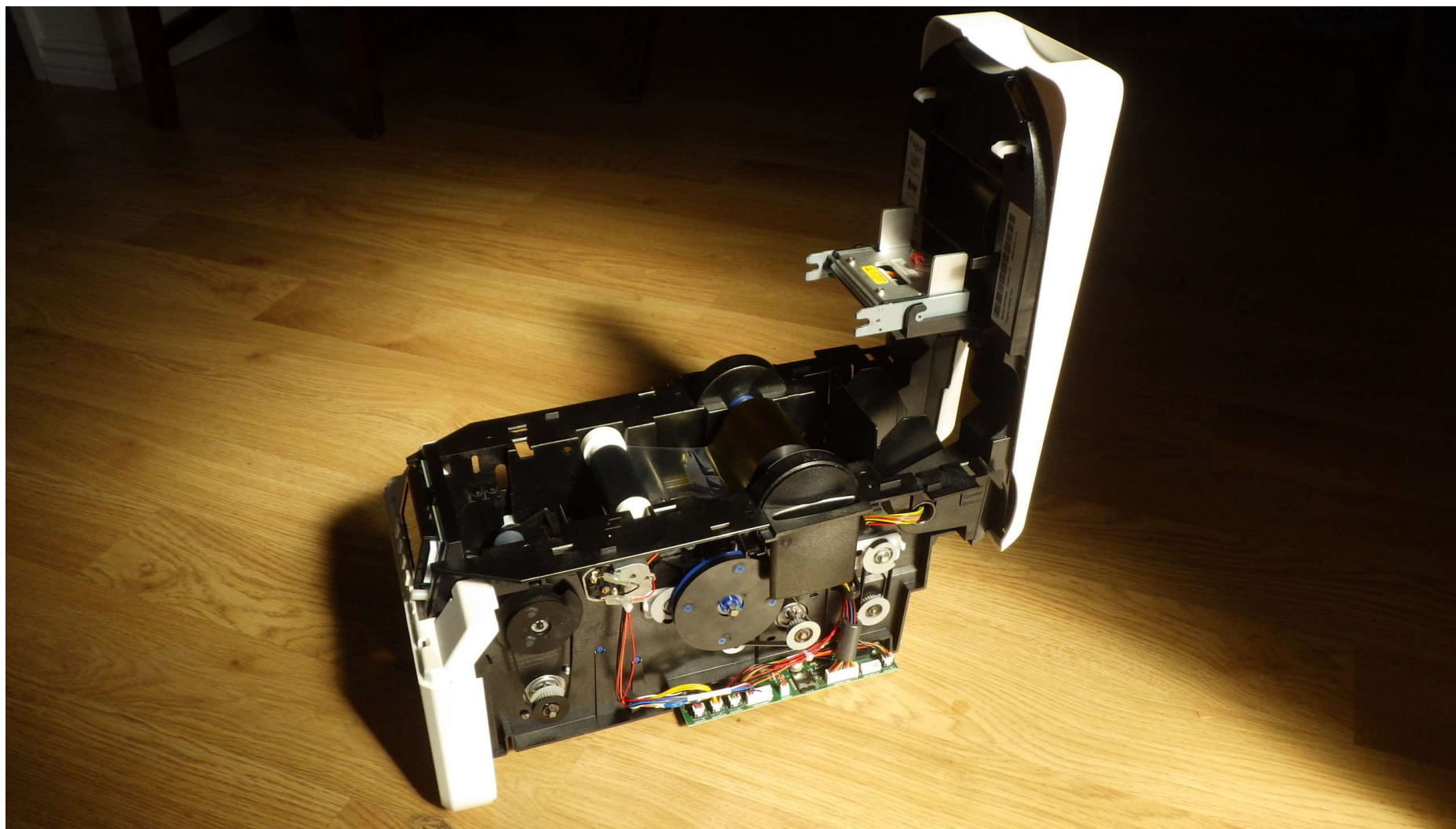
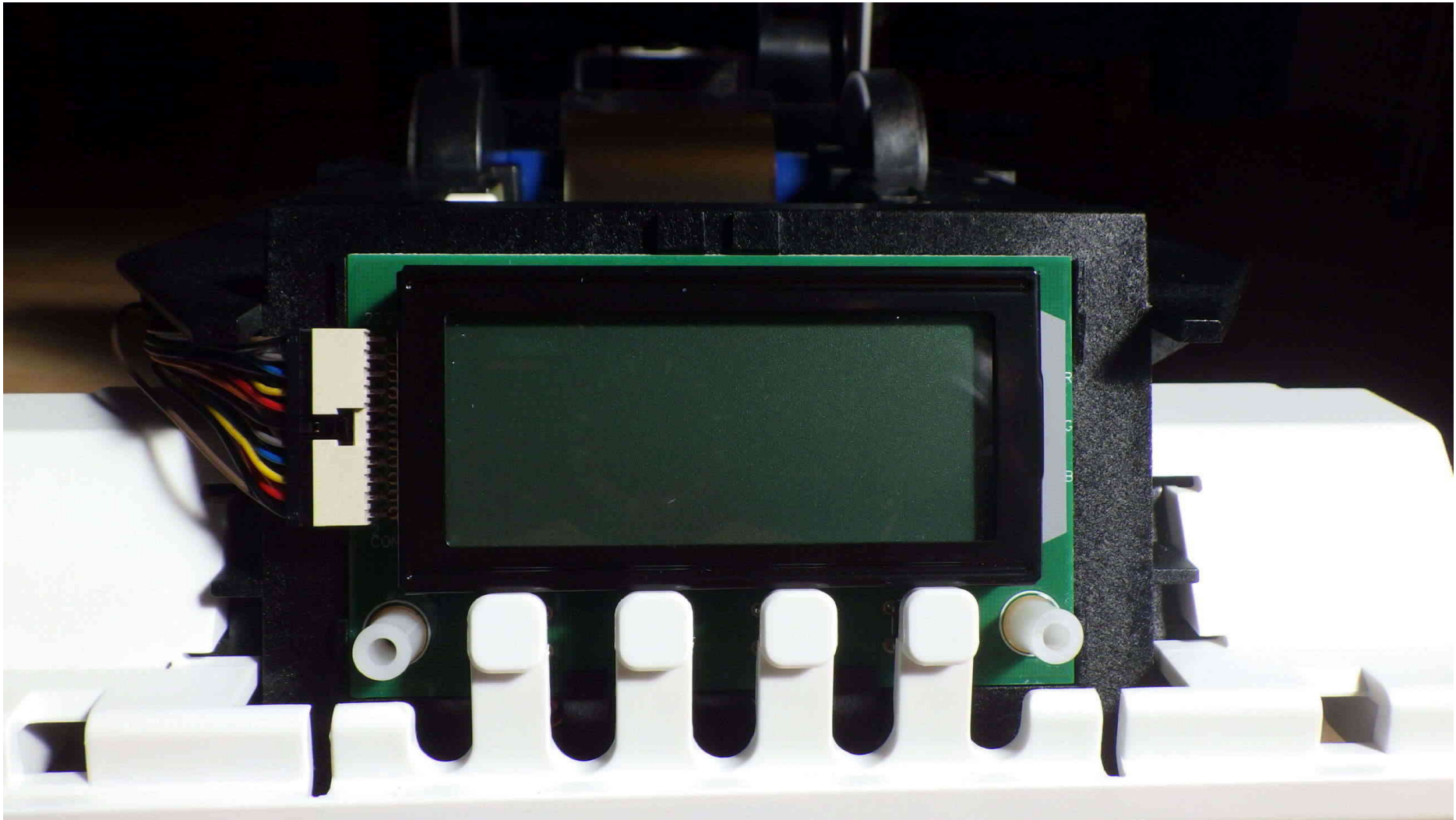


XDW4500-0001 Internal Photos

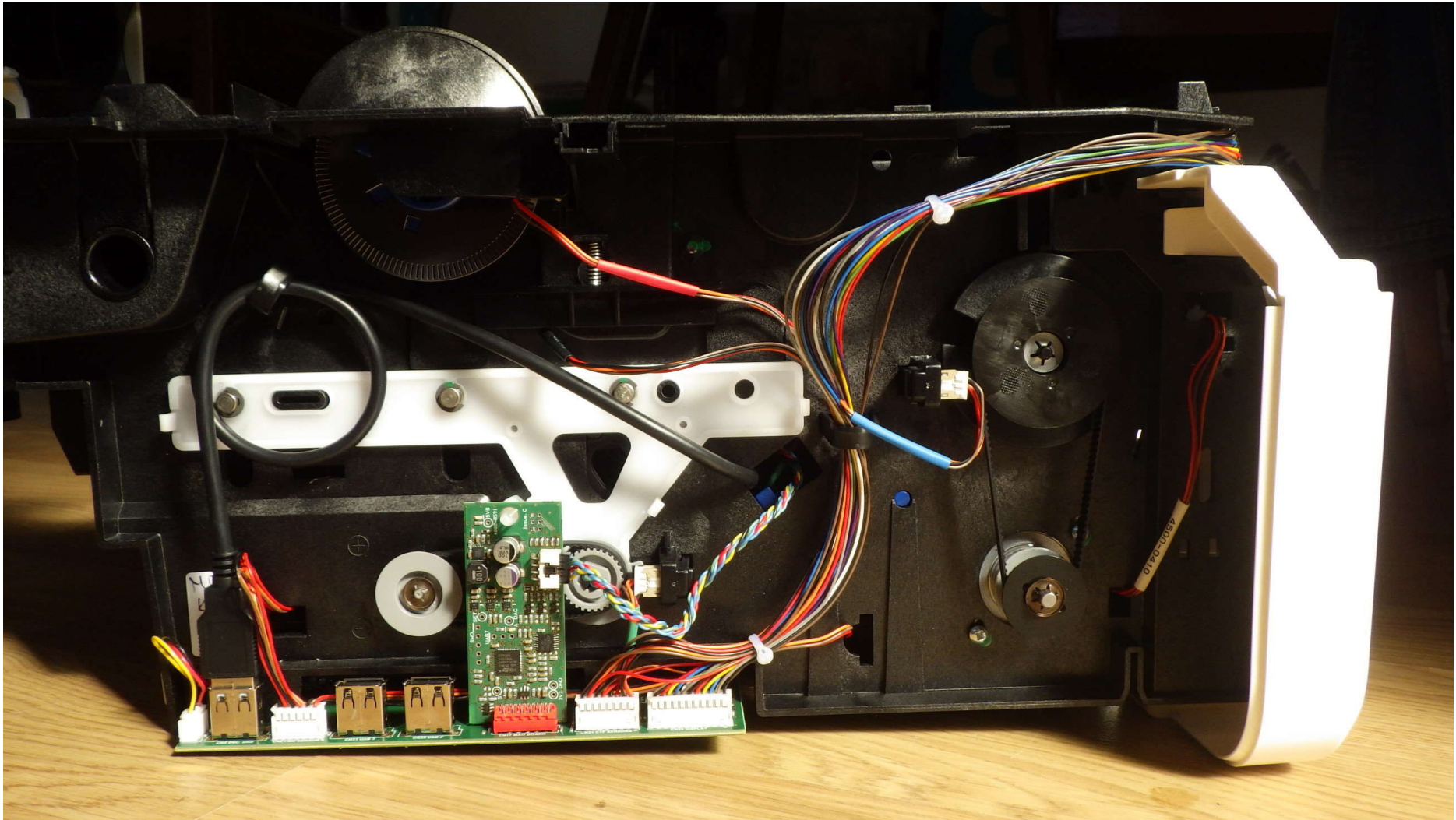


Right side viewed from above with lid open and top surround removed

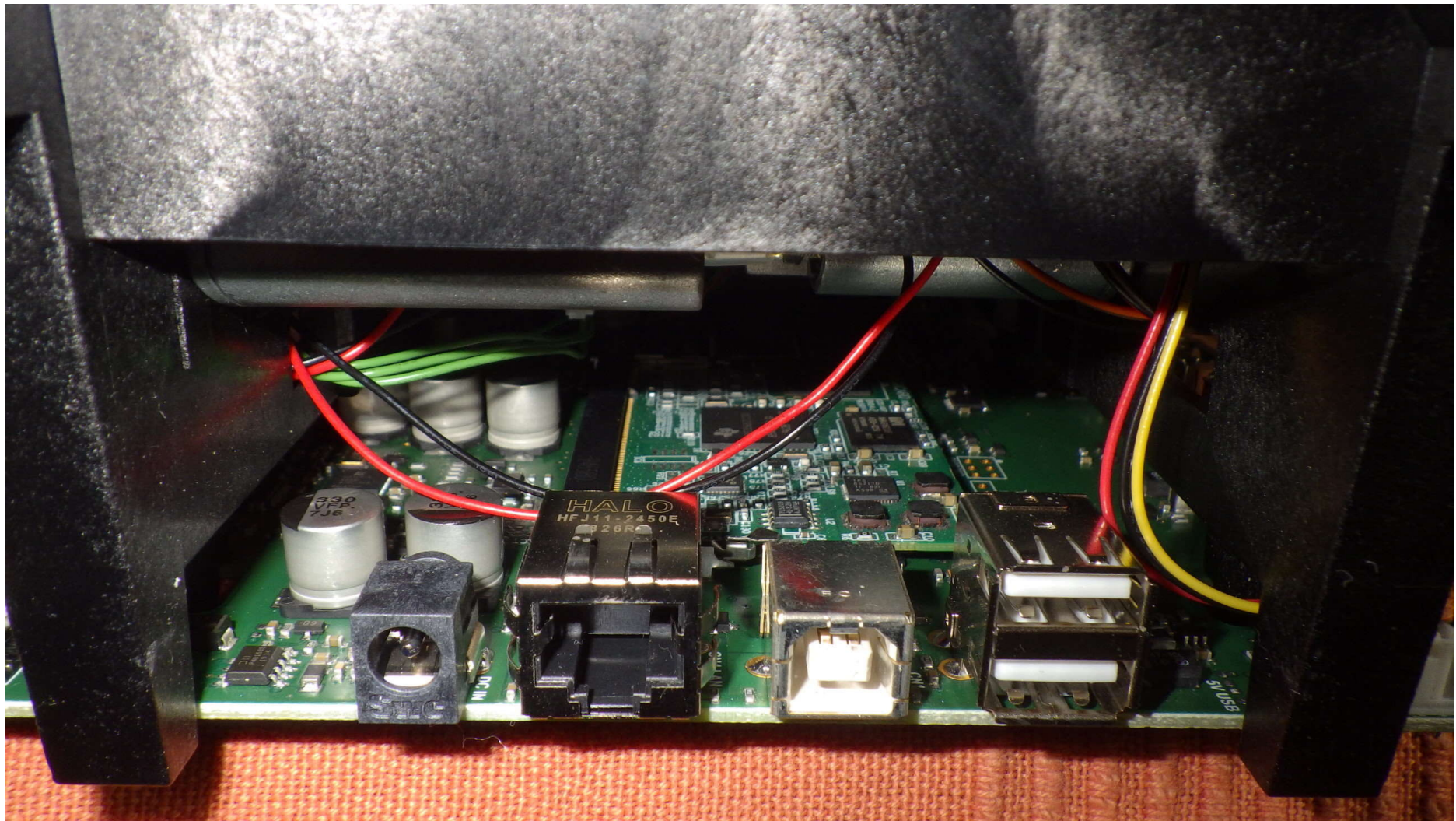


Front LCD assembly detail

XDW4500-0001 Internal Photos

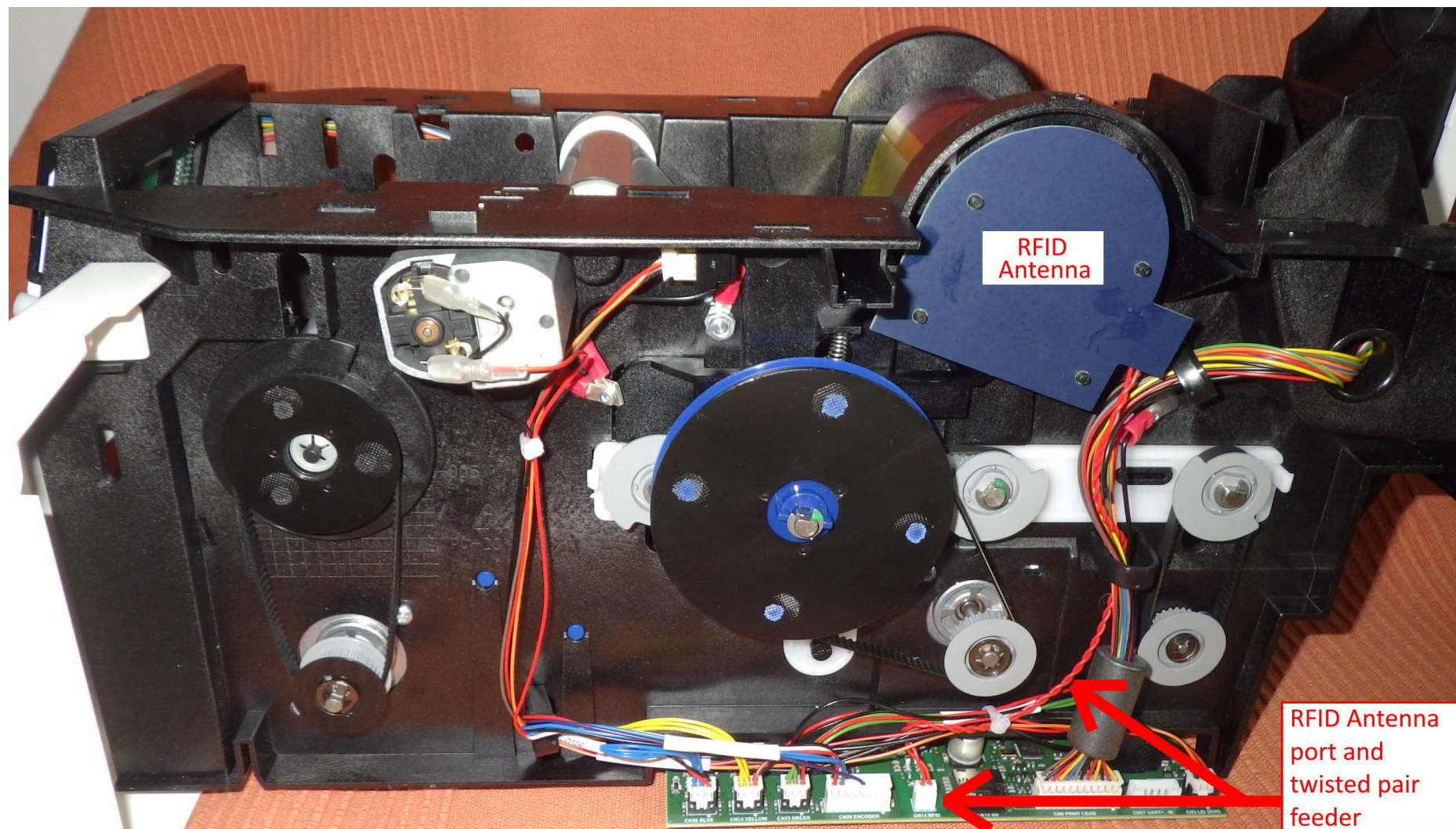


Left side – Notes: “Mag” option is provided by vertical PCB (no RF circuitry in “Mag” option). Encoder option (OEM self-contained Module – not Magicard) is connected via black USB cable and is located centrally within the product



Rear detail view – MB1 embedded module visible at centre

XDW4500-0001 Internal Photos

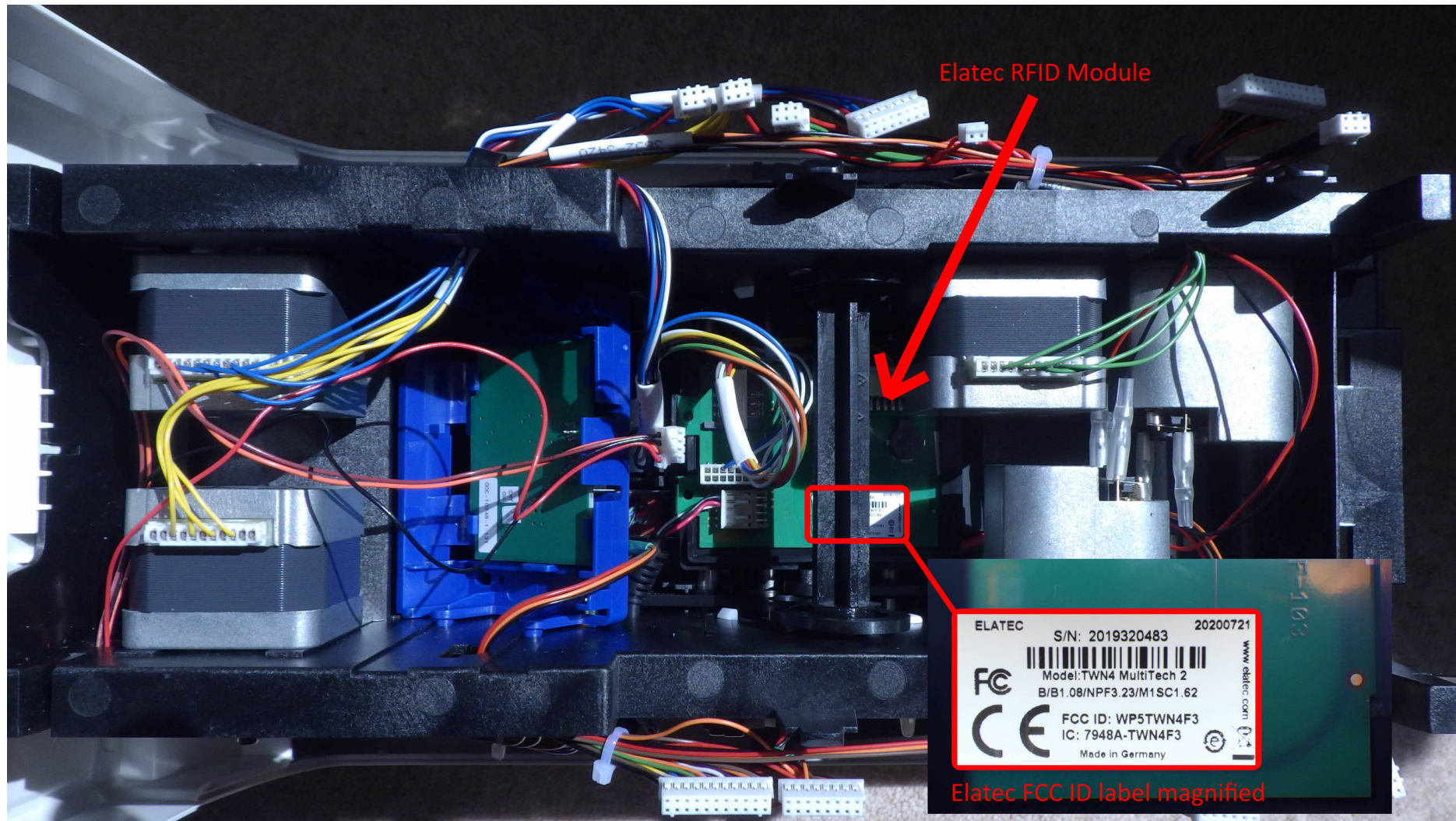


Right side with RFID details highlighted



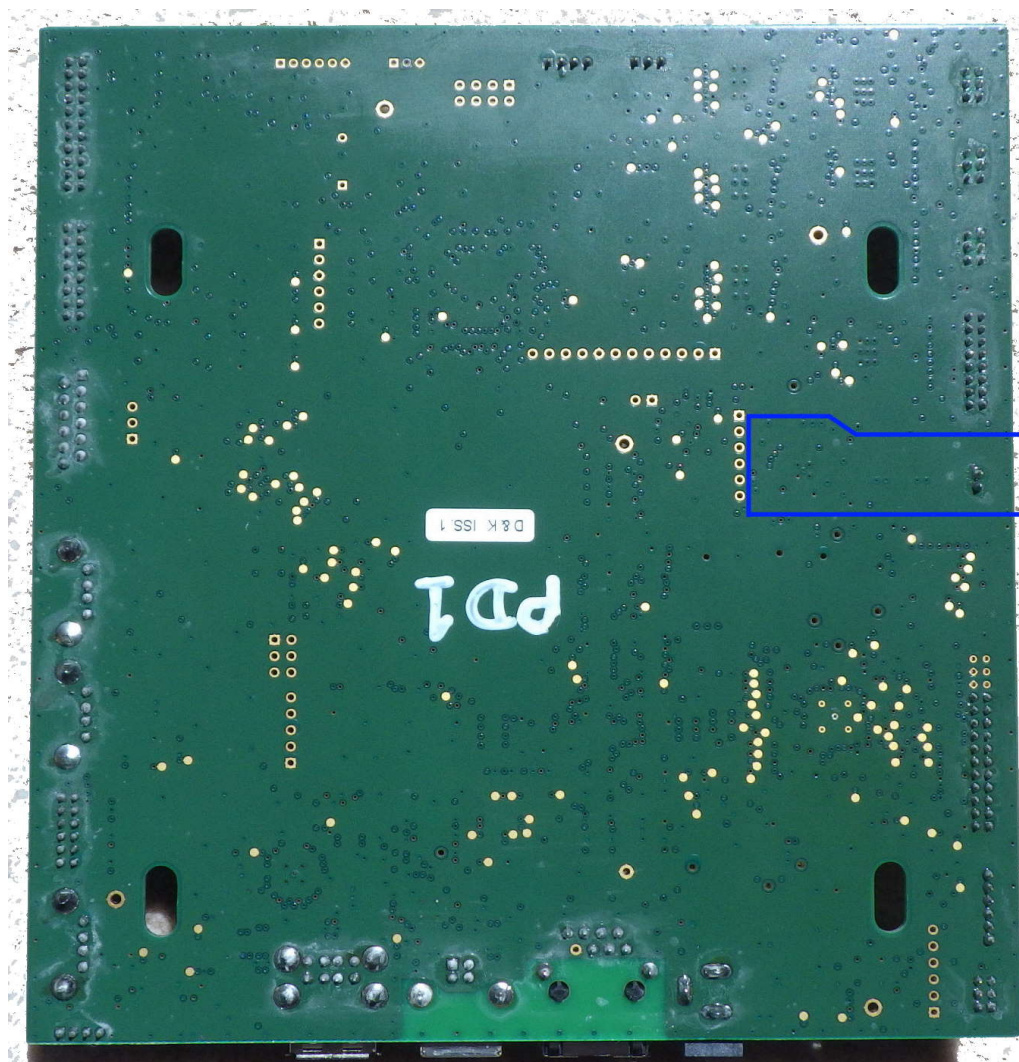
Magicard RFID antenna close-up (lifted from mounting position and turned to show detail)

XDW4500-0001 Internal Photos



View from beneath with Main PCB removed, showing location of OEM Encoder module – FCC ID: WP5TWN4F3
note: this module is entirely separate and distinct from the Magicard RFID arrangement

XDW4500-0001 Internal Photos



Main PCB underside (RFID circuitry located within area bounded by blue line)