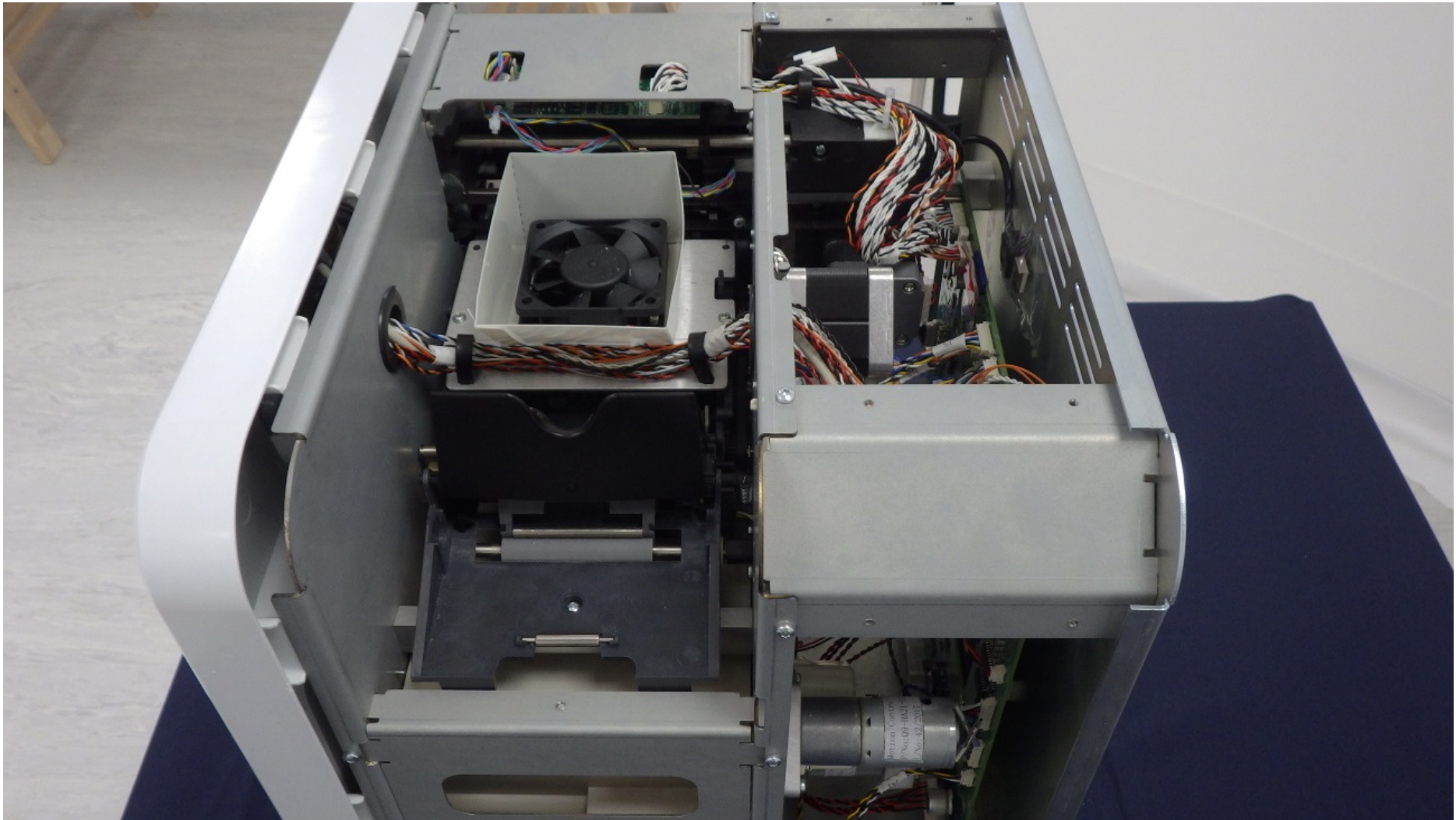
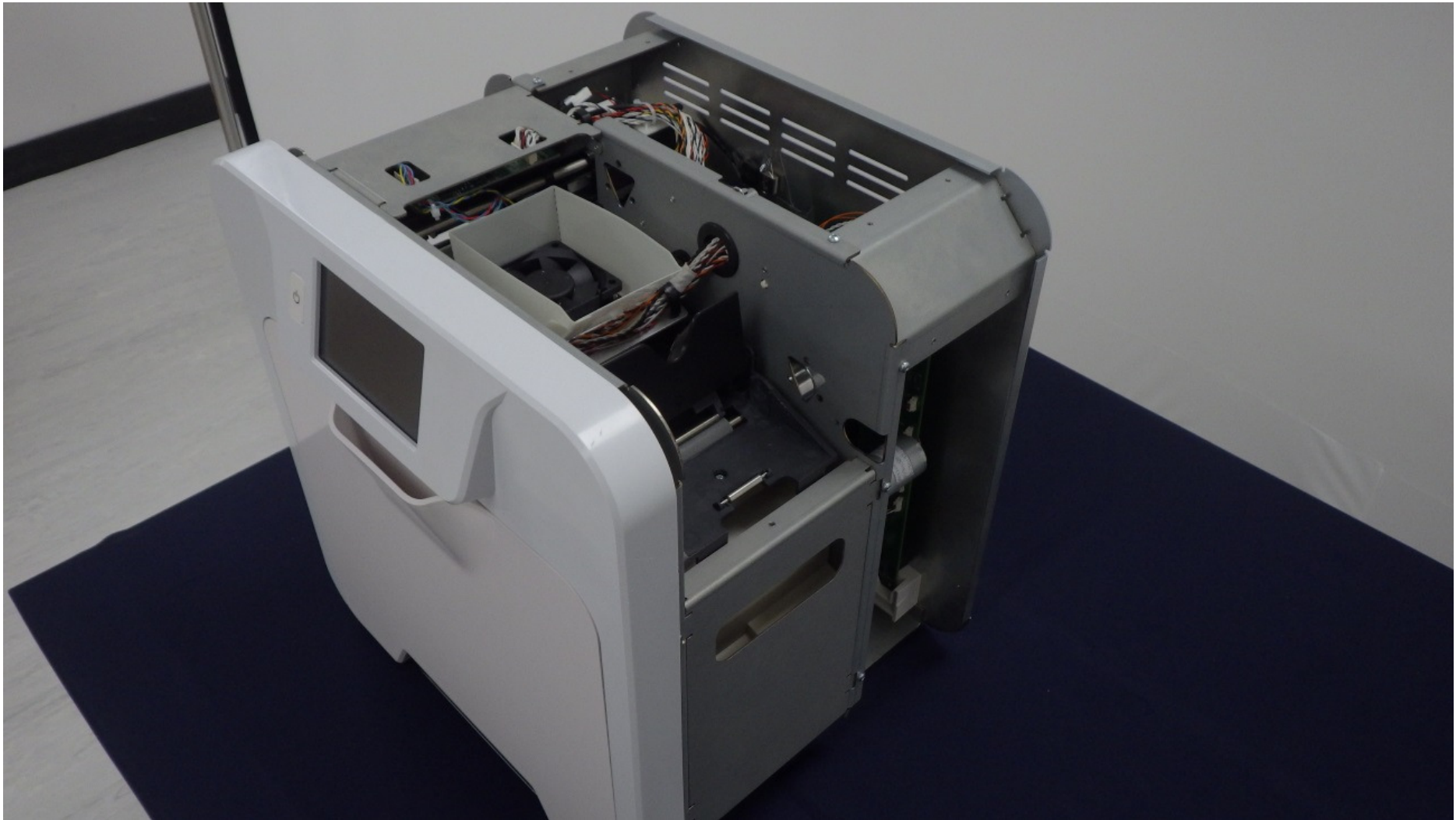


**XDW3680-0001 Internal Photos**



*Right side viewed from above - Main PCB is located on the right*

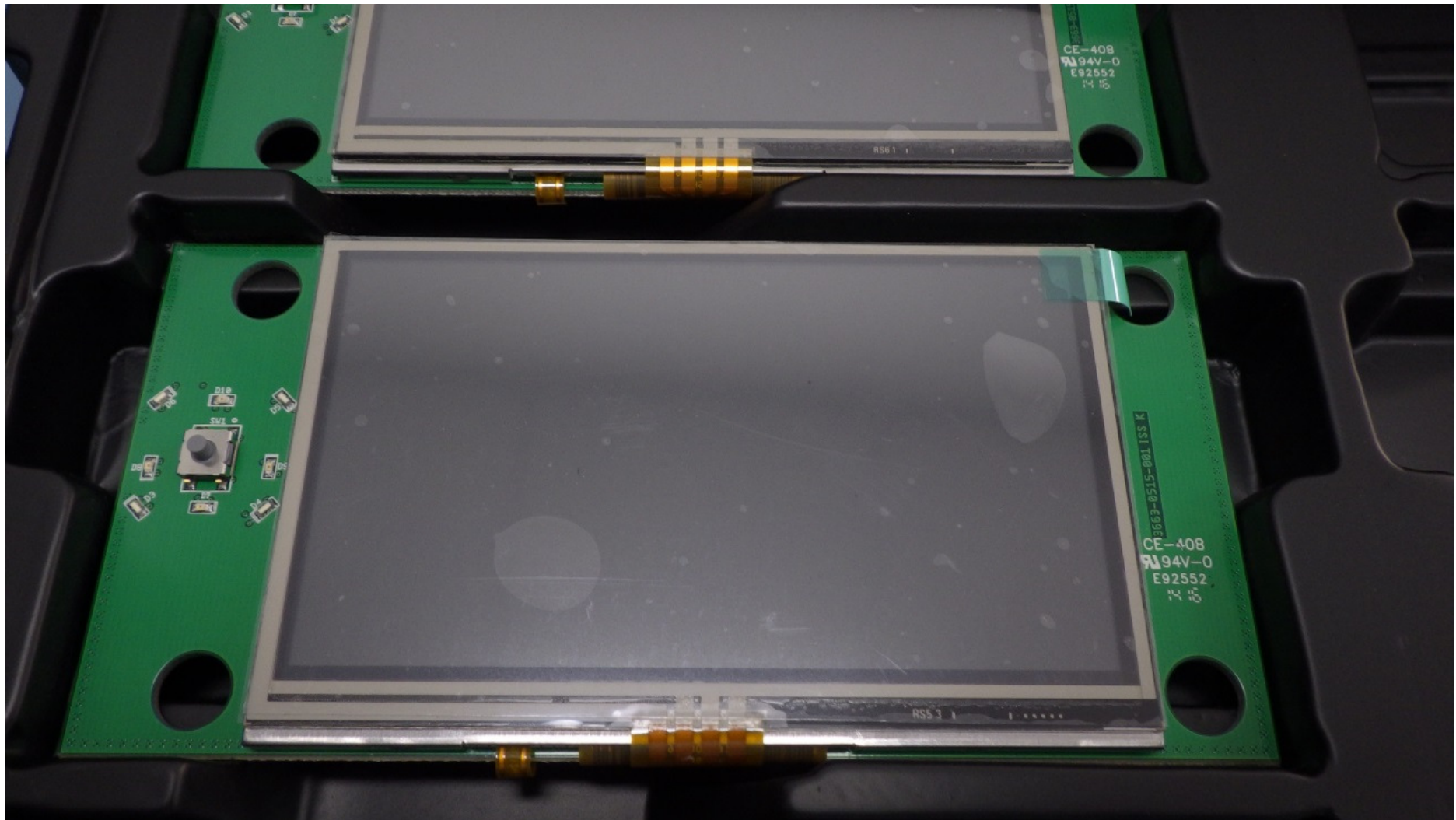
**XDW3680-0001 Internal Photos**



*General view from above – Main PCB is located at rear*

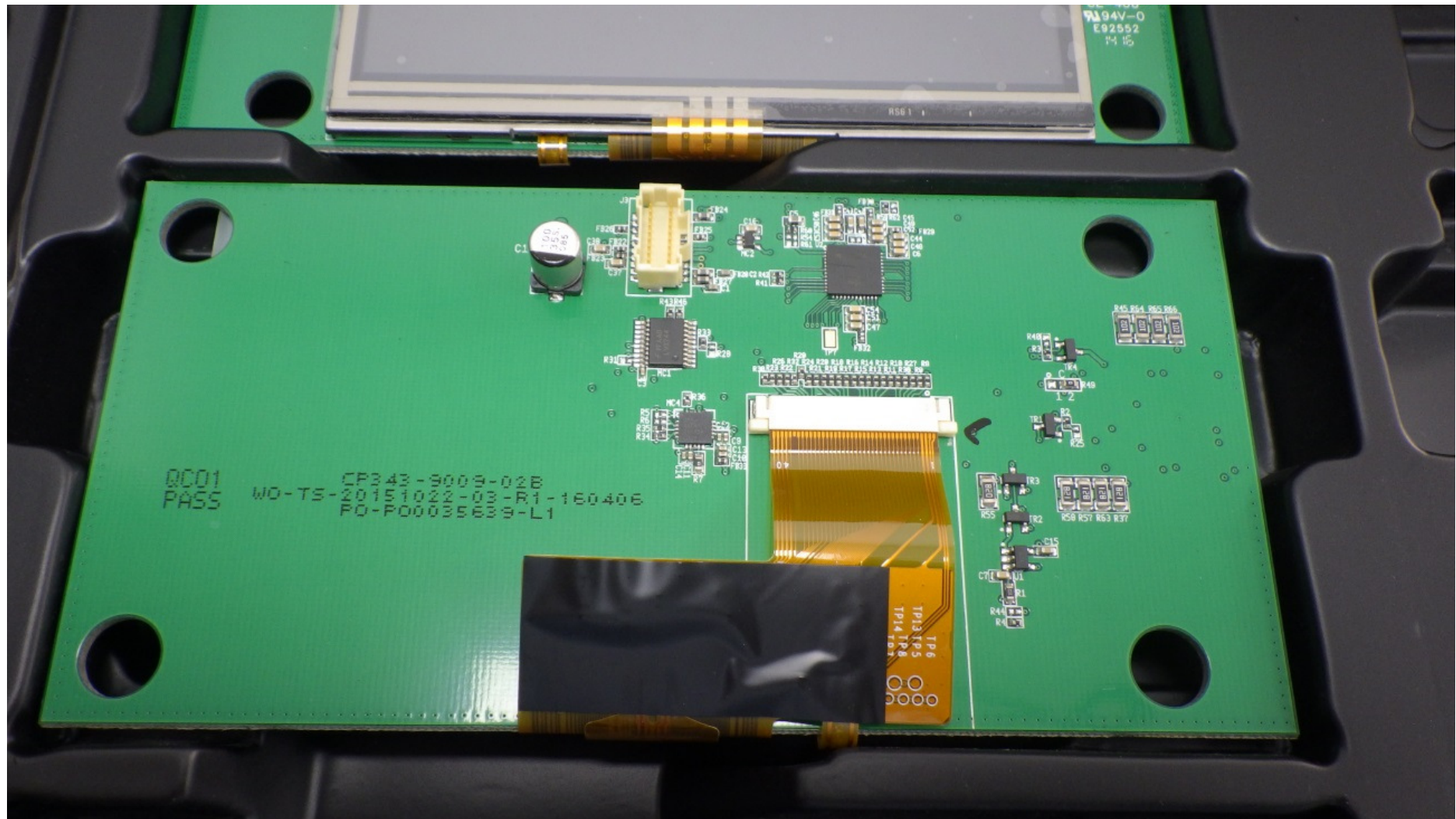


XDW3680-0001 Internal Photos



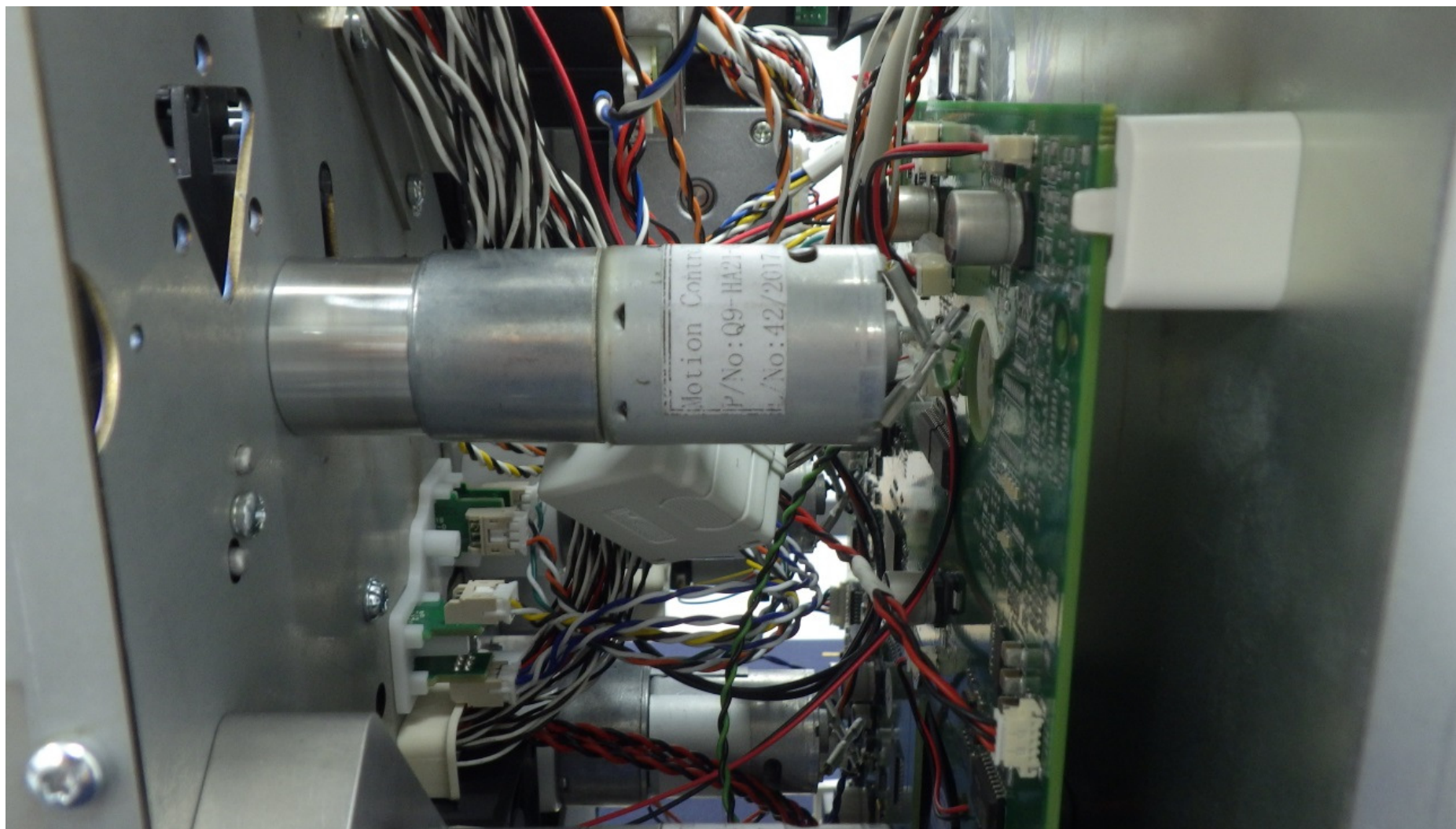
*Display PCB front*

## XDW3680-0001 Internal Photos



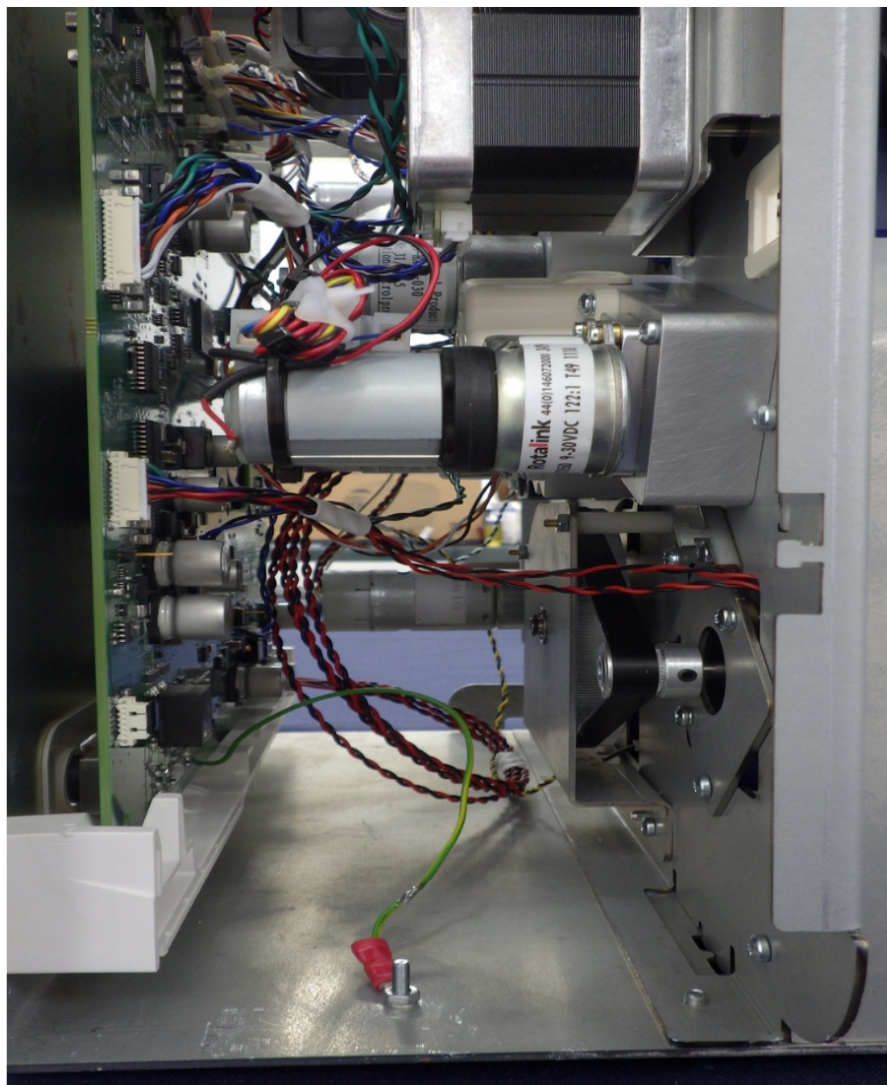
Display PCB rear





*Right-side close view - main PCB is located on the right*

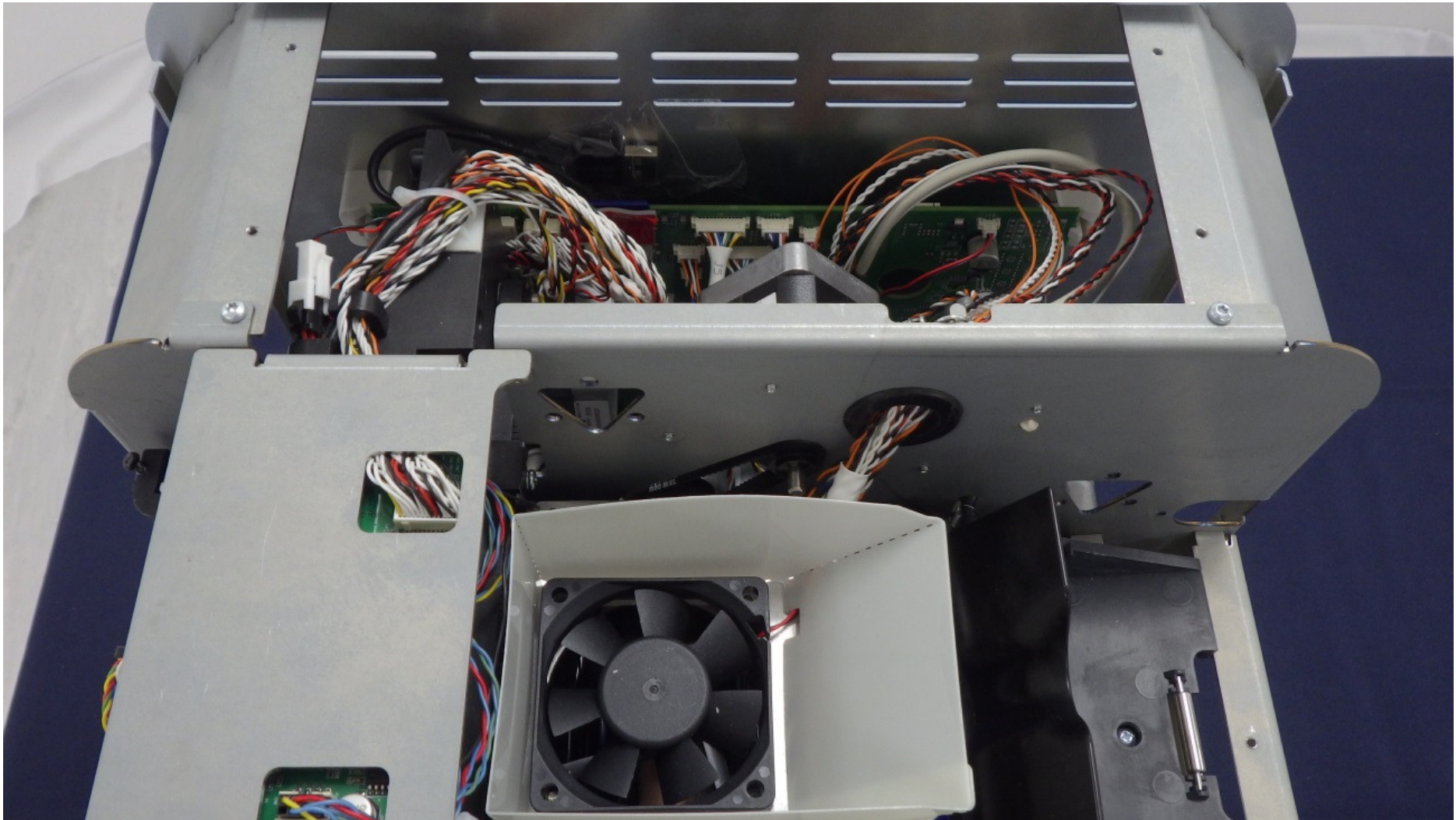
**XDW3680-0001 Internal Photos**



*Viewed from the left – main board visible on the left*

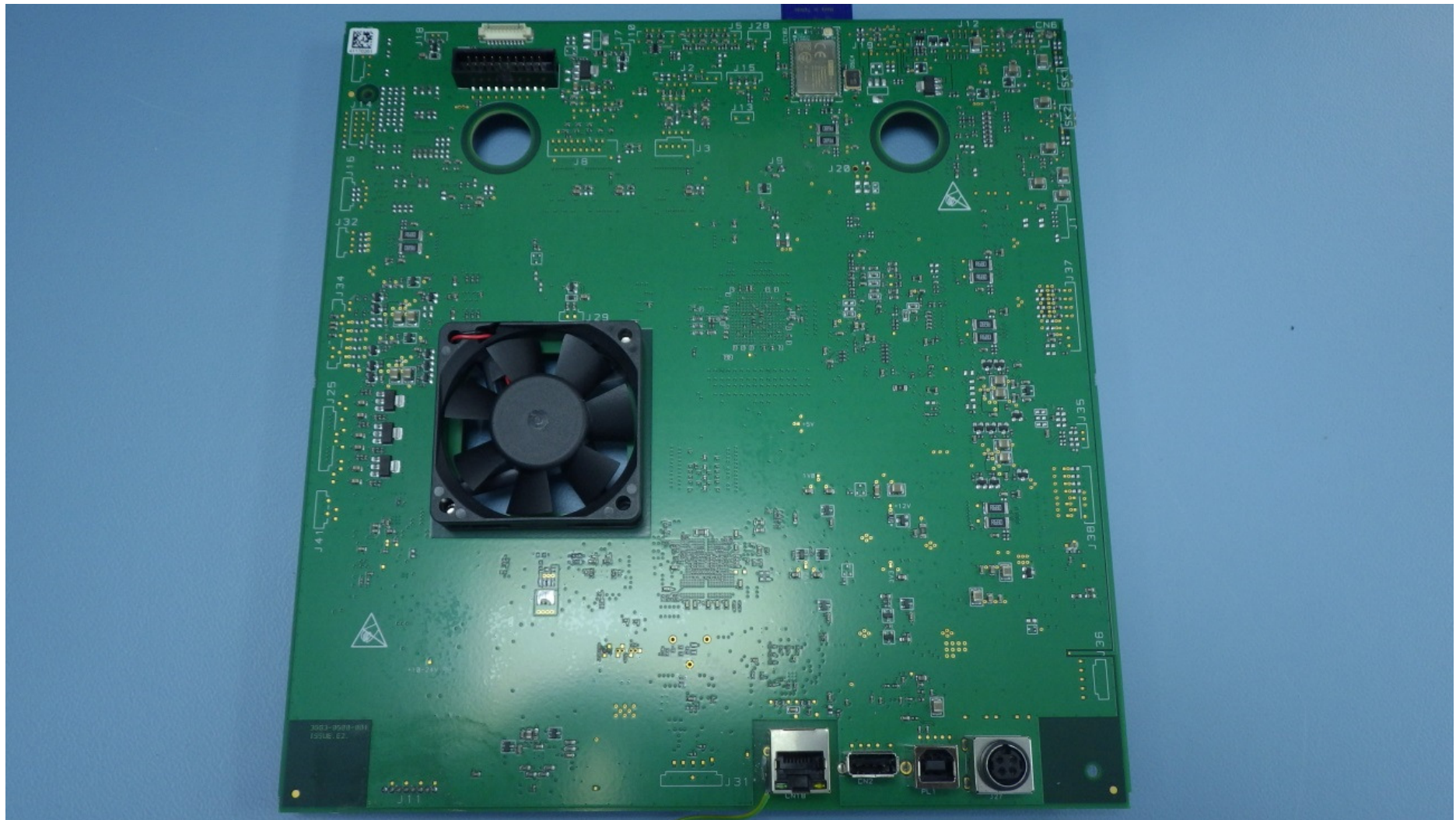


**XDW3680-0001 Internal Photos**



*Viewed directly from above – Main PCB visible at the rear*

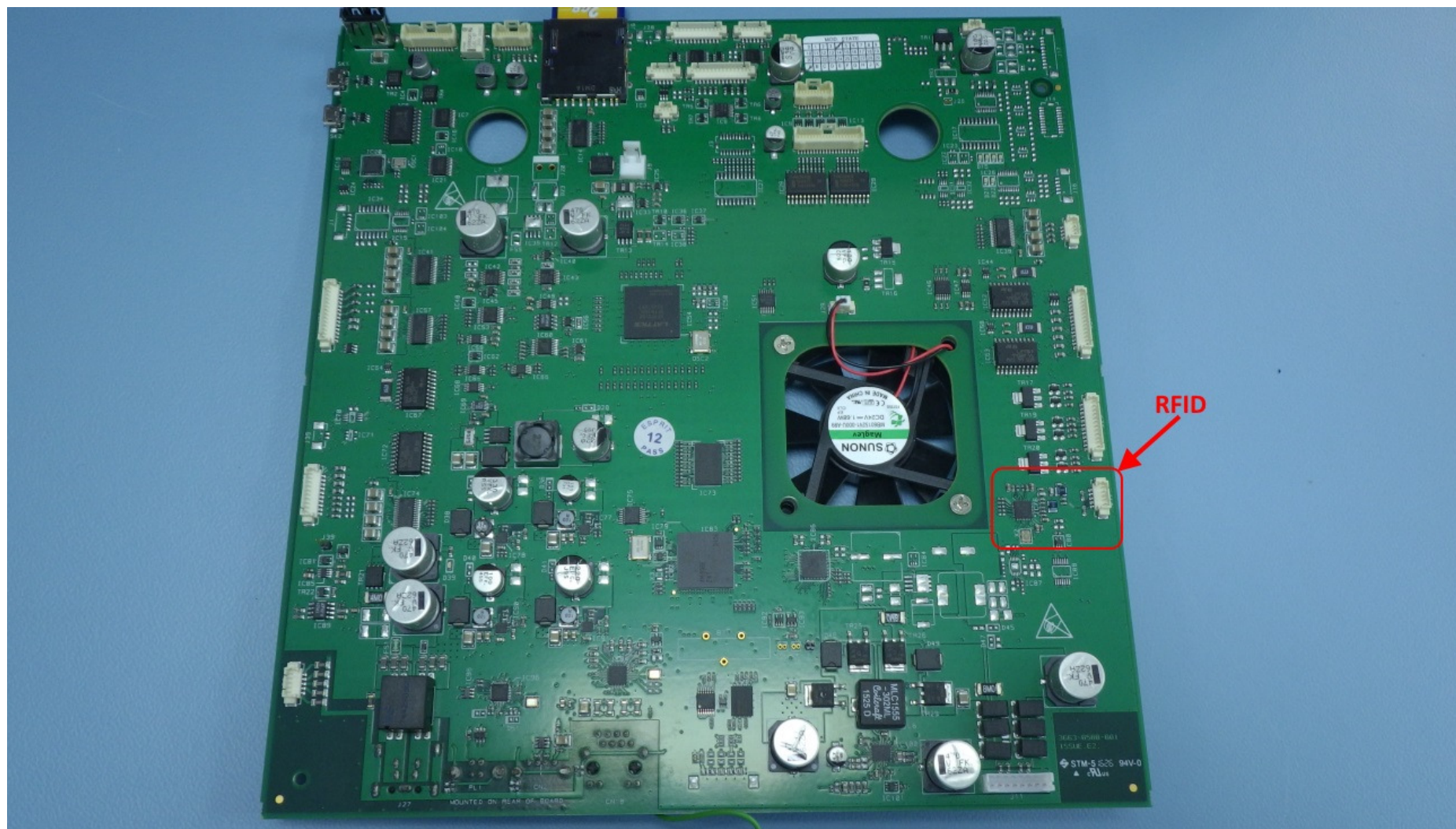
## XDW3680-0001 Internal Photos



*Main PCB viewed from the rear*



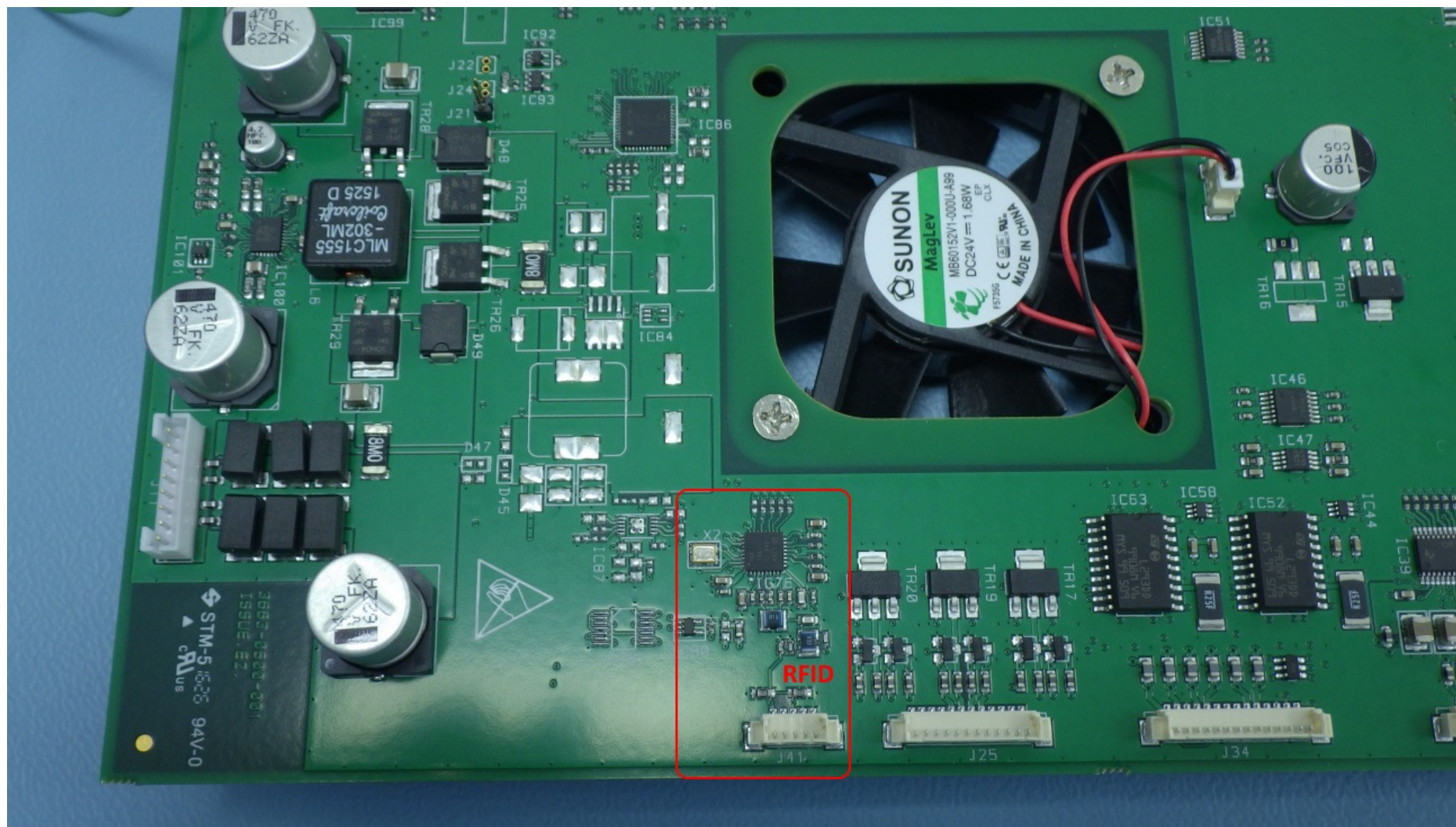
## XDW3680-0001 Internal Photos



*Main PCB viewed from the front – RFID circuitry highlighted*



## XDW3680-0001 Internal Photos

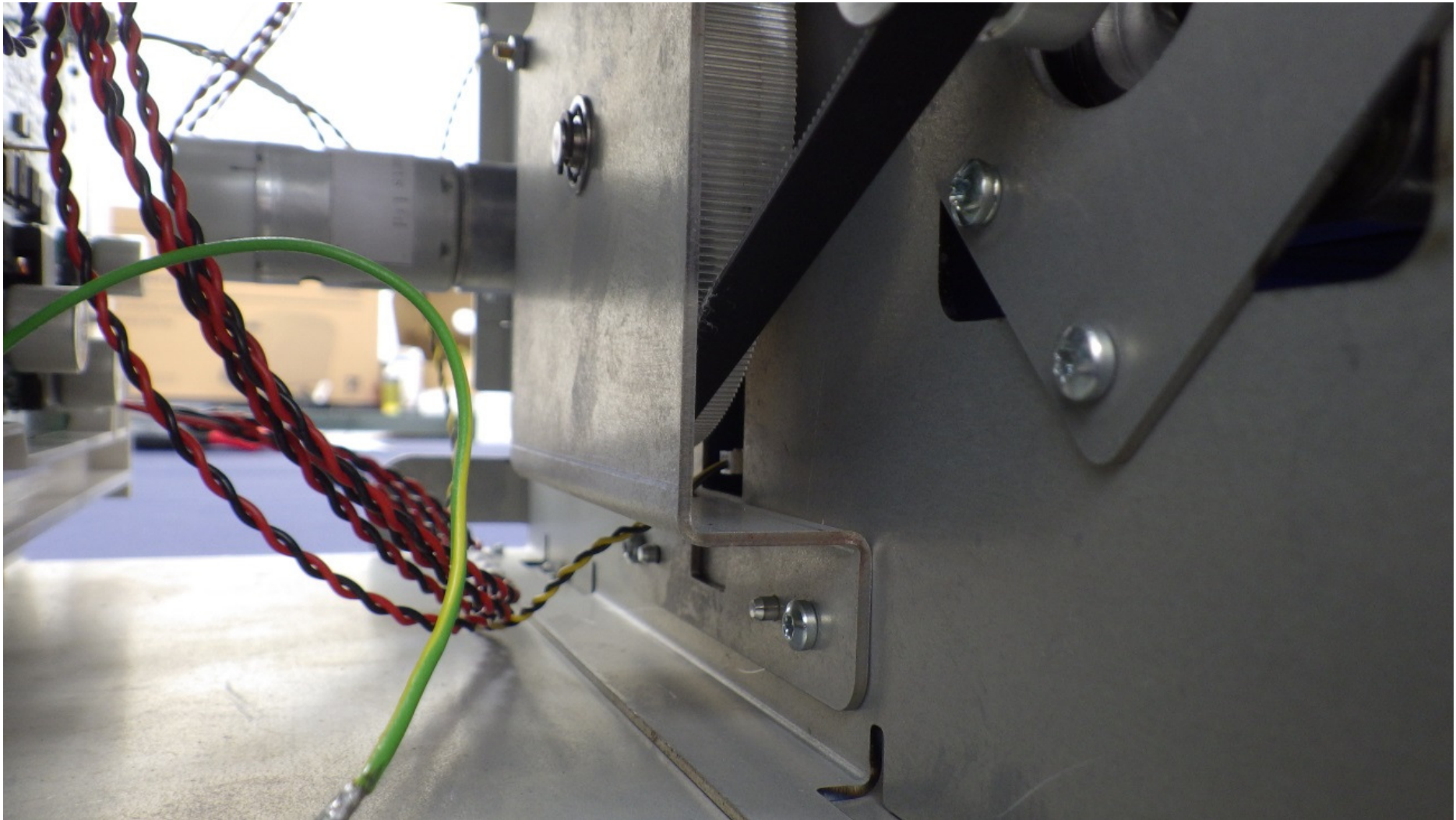


*RFID area on PCB - detail*



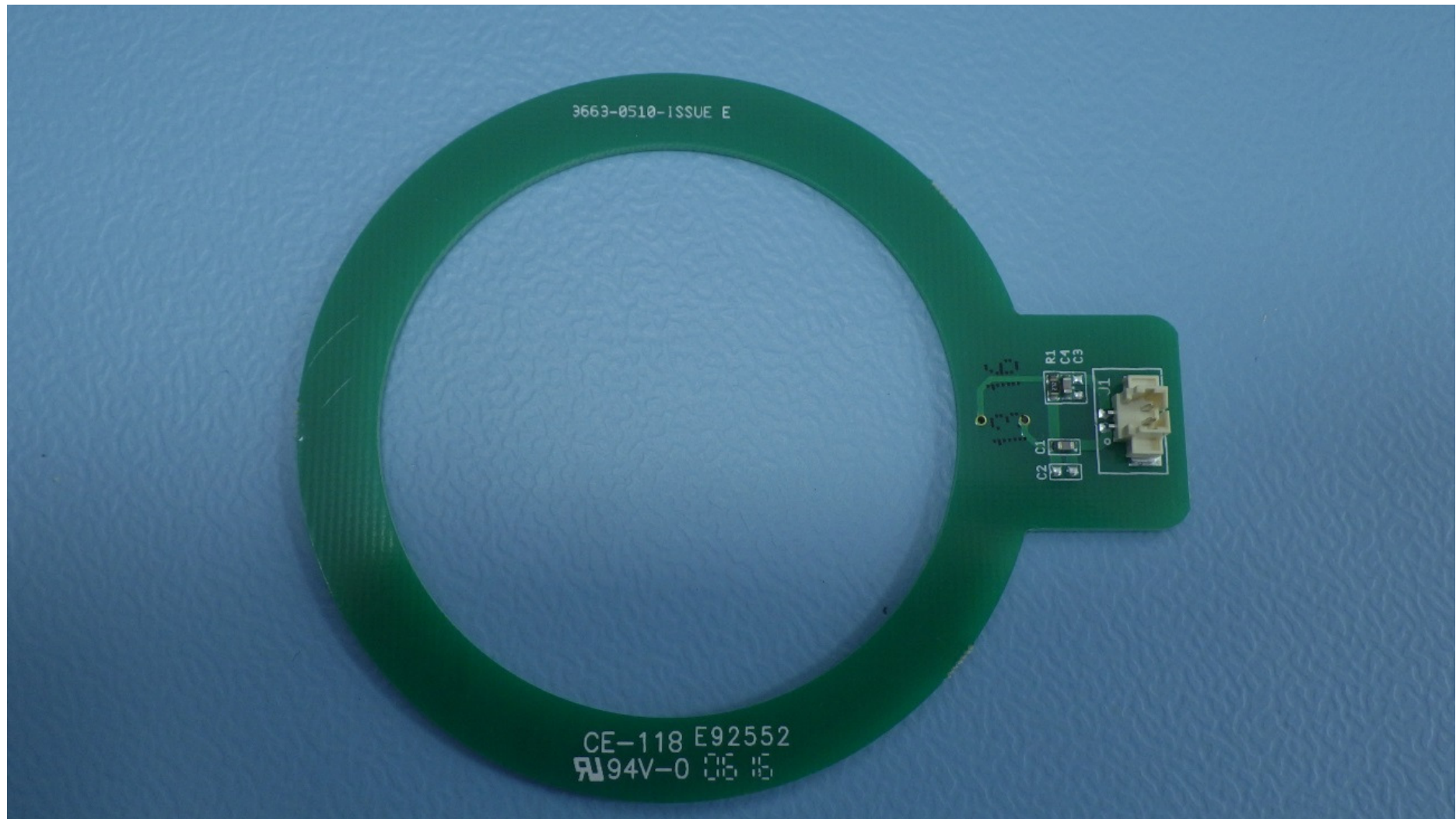


*Right side view (front of product is on the left): Dye-film RFID antenna PCB connection detail (White & Black twisted pair)*

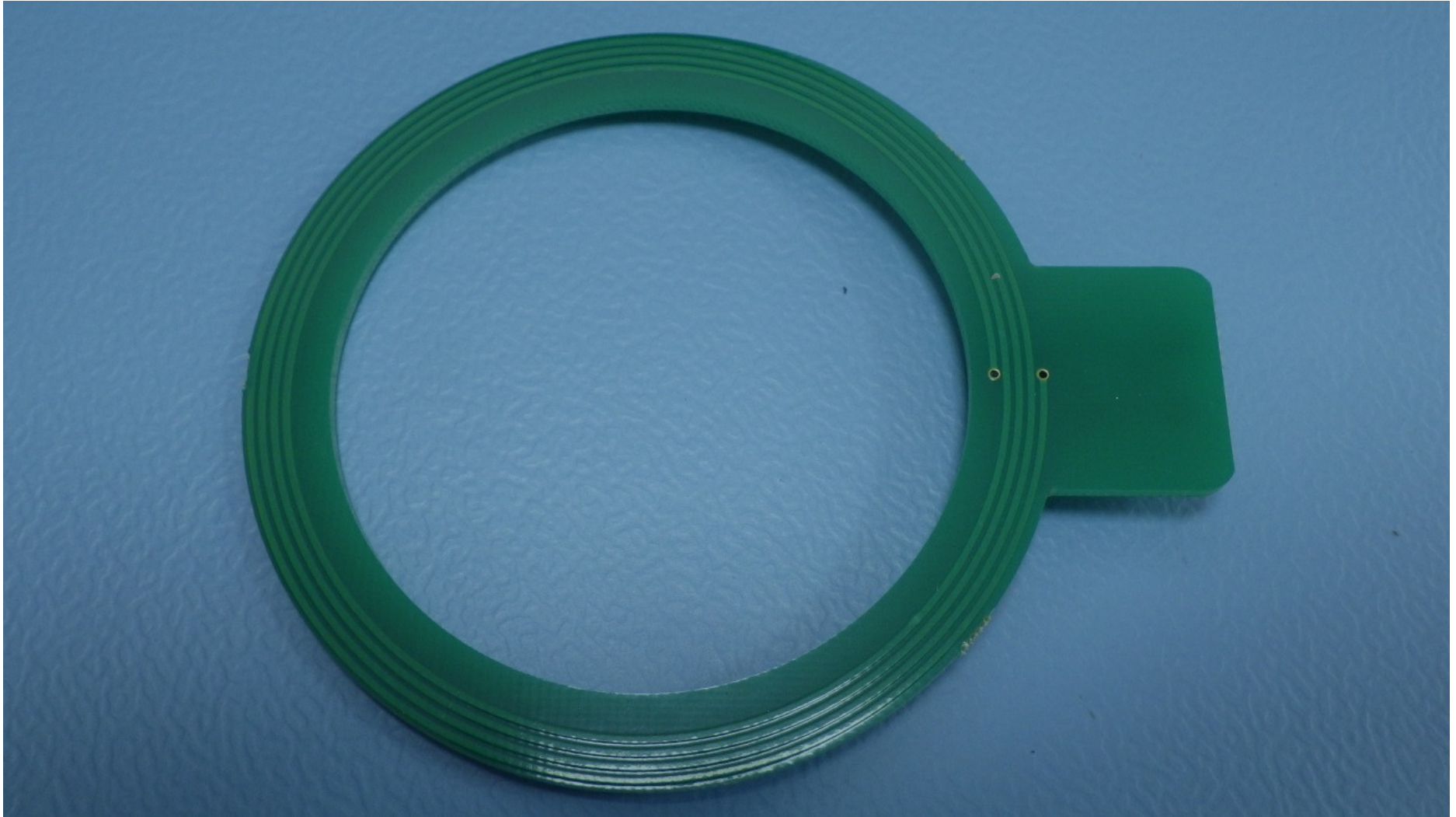


*Left side view (front of product is on the right): Transfer-film RFID antenna PCB connection detail (Yellow & Black twisted pair)*



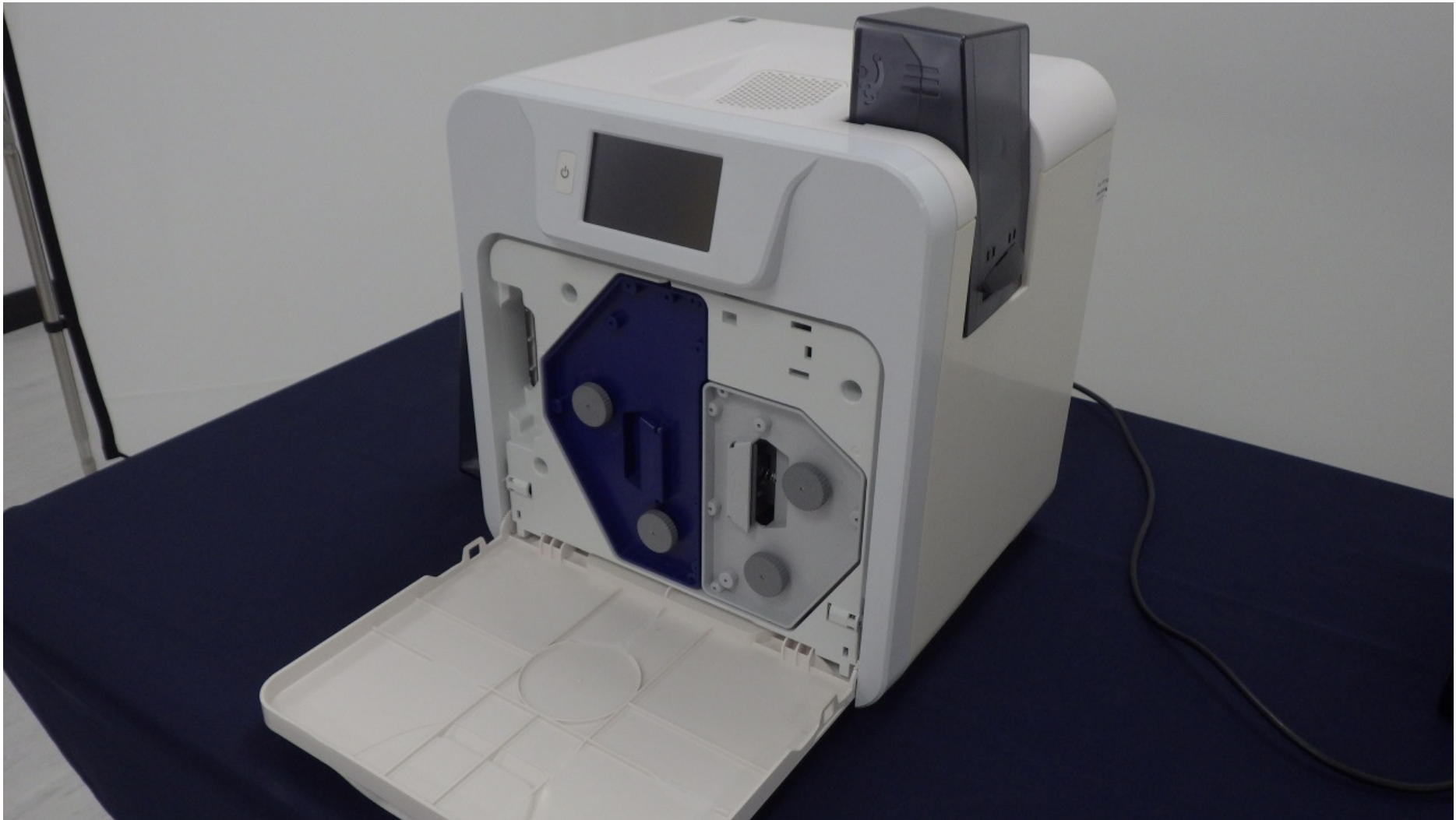


*RFID Antenna front*

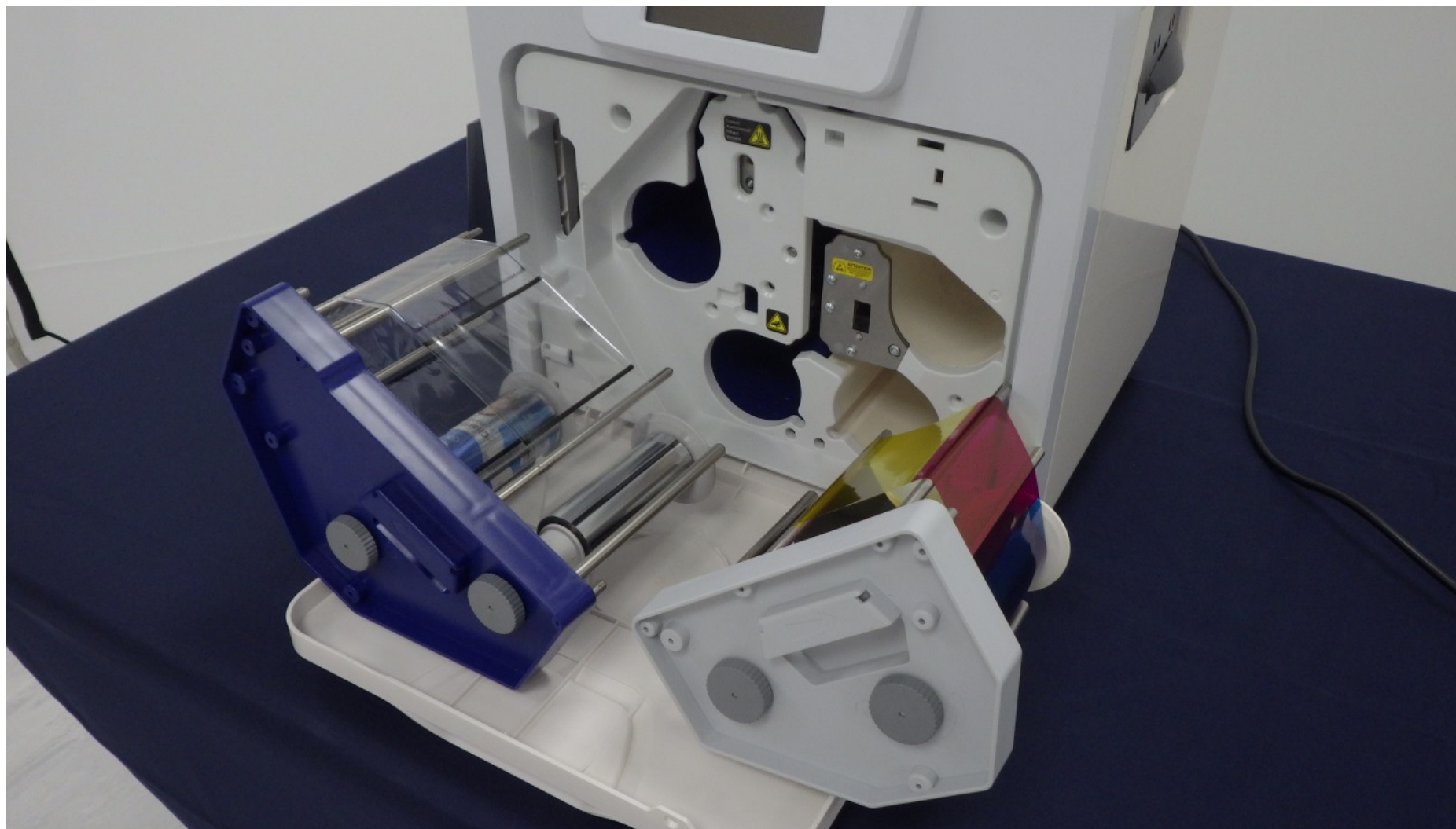


*RFID Antenna rear*





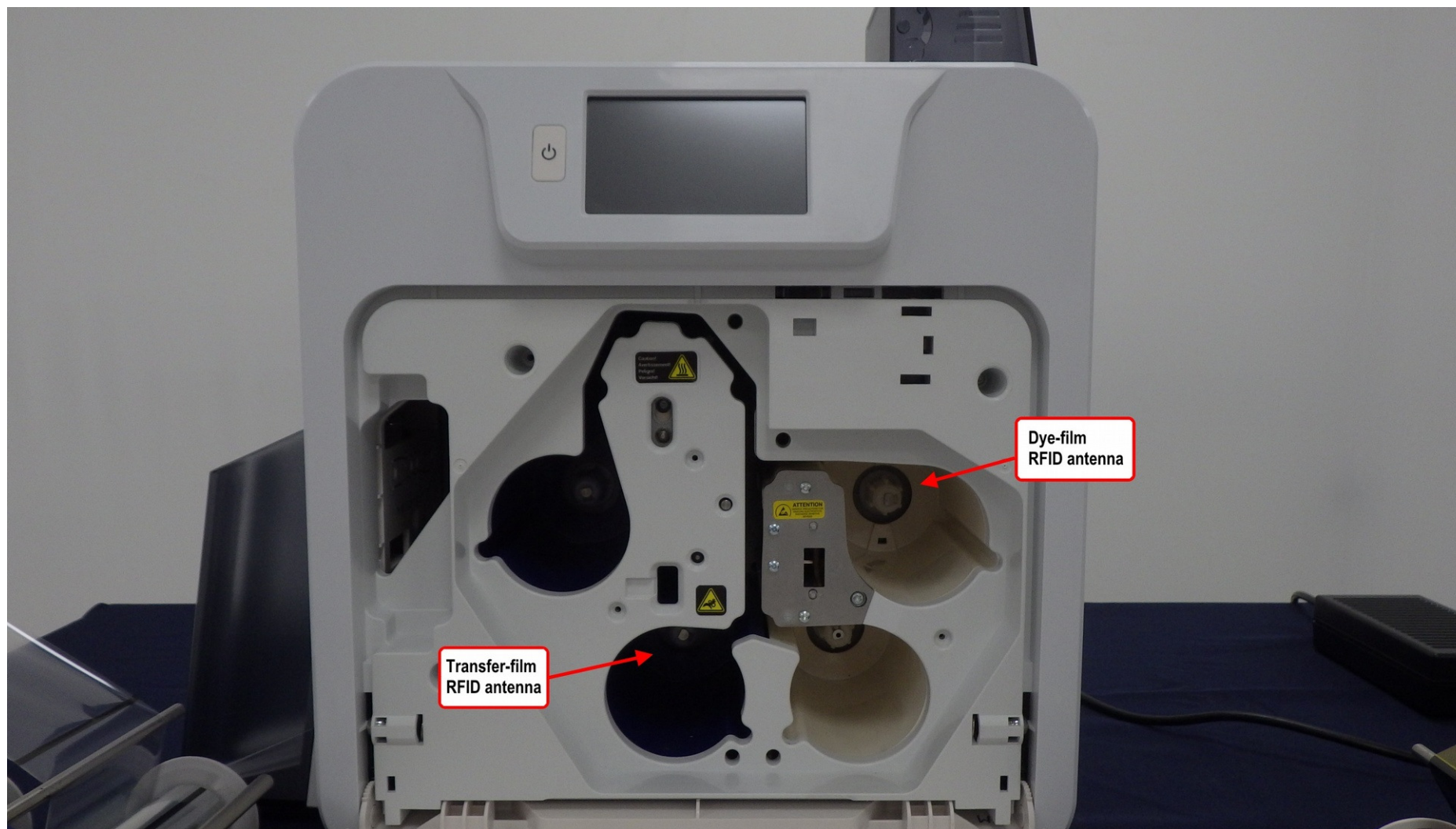
*General view of product with film cover open*



*General view of product with film cover open and films removed*

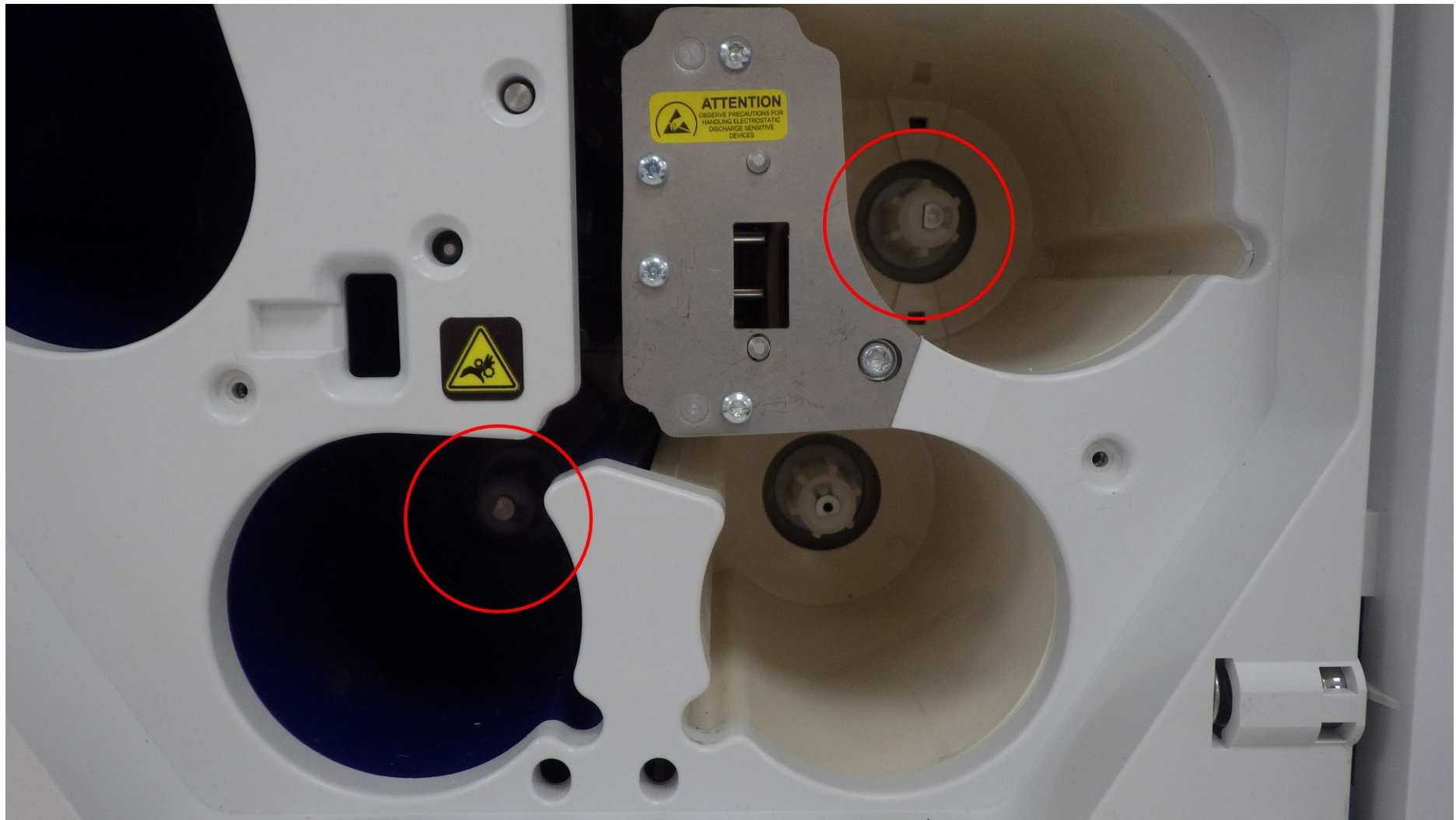


**XDW3680-0001 Internal Photos**



*Front face: film cover open and films removed – location of RFID antennas highlighted*

**XDW3680-0001 Internal Photos**



*Location of RFID antennas highlighted - close-up*