

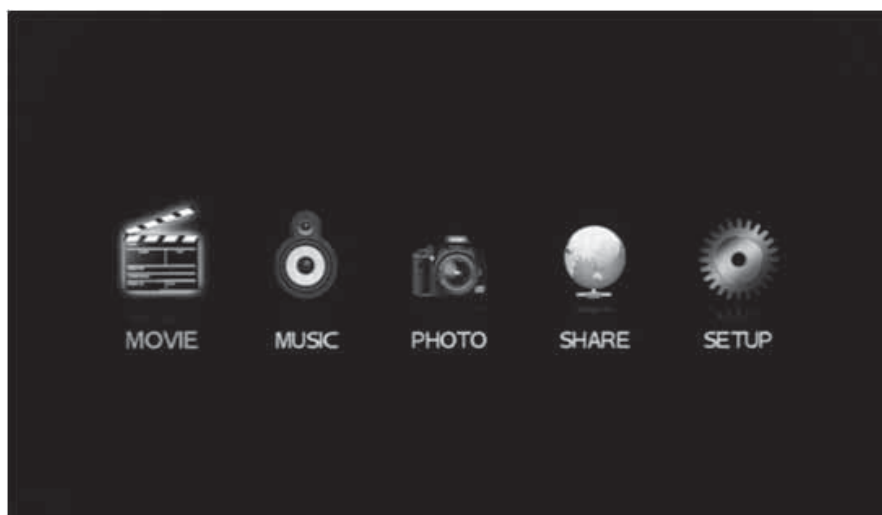


## 5. Media Playback

### 5.1. Video Playback

#### 5.1.1. Basic functions

1. Menu Selection : In the Main menu, select MOVIE menu using the left/right button on the remote controller .



2. Select the storage : Select a HDD device which the desired video file is stored using left/right button on the remote controller





## 5. Media Playback

- Video file playback : Navigate a folder and a file to playback using the Up/Down button on the remote controller and select using OK button. Then the file gets started to playback
  - Pause : Press PLAY/PAUSE button while the file is playing
  - Stop : Press STOP button while the file is playing



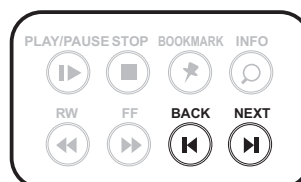
### Note

In the video list, press PAGE Up/Down button to move to next / previous page

### 5.1.2. Remote Button Tips in Video Playback

#### • **BACK / NEXT button**

Using BACK / NEXT button, you can skip or go to the previous or Next contents.



#### • **INFO button**

Using INFO button, you can check the information of the playing contents.

☞ Press INFO button one more time to disappear the information.





## 5. Media Playback

### • **BOOKMARK button :**

By using BOOKMARK button, you can make the stop position saved automatically and you can resume it later anytime

👉 Bookmark setting : While the video is playing, if you press BOOKMARK button, it will be set.



👉 Bookmark List : The file name of Video and the time to be stopped are displayed in the Bookmark list.



### 👉 Usage of Bookmark

Bookmarked - file is saved in a special directory of Movie menu. In Movie menu, press BOOKMARK button, and you can go to the Bookmark directory .

The format of a saved file name is video file name ( Hour: Minute : Second )

Go to a file desired to play using the Up/Down button and select it. Then the file playbacks.



#### **Note**

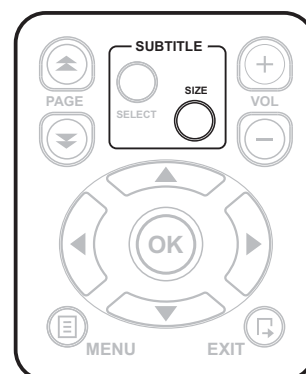
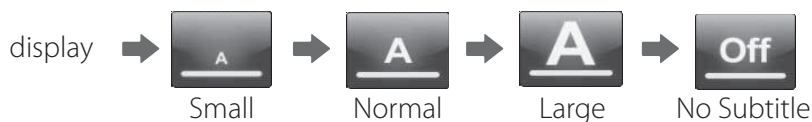
- Maximum 20 Bookmarked files can be saved in the list. In the event that the files are over 20, the oldest file to be saved will be deleted automatically.
- a file deleted from the Hard Disc Drive will be automatically deleted from the Bookmark list
- Can not save the Bookmark list in USB Host or LAN mode

## 5. Media Playback

### • **SUBTITLE button** :

#### \* Size of Subtitle

During the video playback, you can change the subtitle size using SUBTITLE



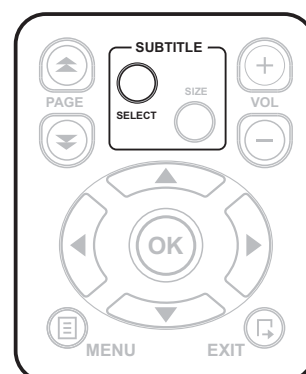
#### \* Subtitle Sync

While the video file with subtitle is playing, you can change the subtitle sync using PAGE Up/Down key.



#### \* Subtitle file Selection

You can go to Subtitle Manager mode by pressing SELECT key in SUBTITLE. You can navigate folders and files and press OK button on a subtitle file you want.



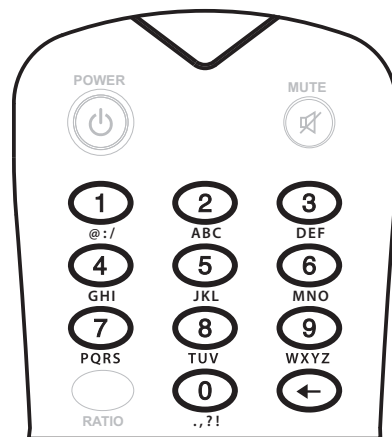


## 5. Media Playback

### • **GOTO button :**

During the video playback, you can choose the time, chapter and title by pressing GOTO button.

After choosing by Numeric keys and OK button, you can jump to a desired time-stamp of the video file.



### • **FF/REW button**

During the video playback , you can control 2,4,8,16 and 32 access time using FF/REW button or Left/Right key. When you try each access time, the information icon will be displayed in the upper left



You can go forward or rewind by 1 minute using Up/Down keys



#### **Note**

In the event of the video file playback in the external storage device via USB – Host , FF/REW is performed by Left/Right button



## 5. Media Playback

### • **REPEAT button :**

This function assigns a loop/repeat video segment. And video between these two points will play indefinitely.

- First press : makes a start-point
- Second press : makes a end- point and starts the loop/repeat
- Third press : REPEAT off

When you press REPEAT button for a loop/repeat video segment, the information icons for Start, End and Play are displayed in the upper side on the screen .



Start



Repeat Play



### • **ZOOM button :**

During the video playback , you can change the screen size by pressing ZOOM button : such as Default, Full, PAN & SCAN, Half and Zoom.

**Default** : keep the original ratio and display in the screen without loss.

**Full** : Regardless of the original ratio, largely display as the screen size

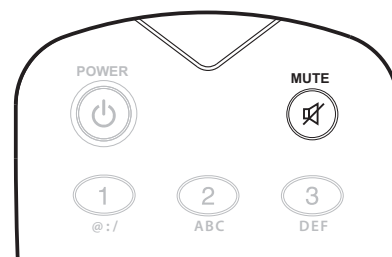
**PAN & SCAN** : cut the both side of screen and display in the full screen

**Half** : reduce the video size in half and display in the screen

**Zoom** : expand the video size in 120% and display in the screenside on the screen file.

### • **MUTE button**

You can make no-sound by pressing MUTE button. Toggle the button to make sound on.



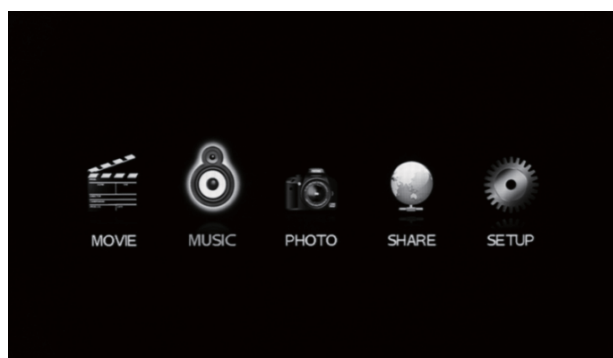


## 5. Media Playback

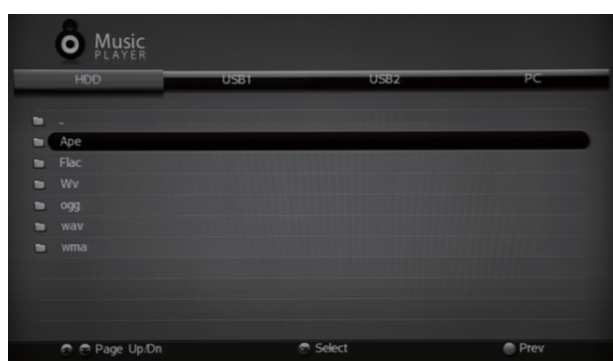
### 5.2. Audio Playback

#### 5.2.1. Basic functions

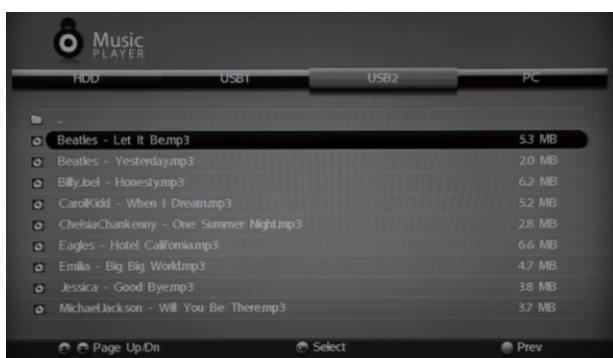
1. Menu Selection : In the Main menu, select MUSIC menu using the left/right button on the remote controller .



2. Select the storage : Select a HDD device which the desired audio file is stored using left/right button on the remote controller



2. Audio file playback : Navigate a folder and a file to playback using the Up/Down button on the remote controller and select using OK button. Then the file gets started to playback







## 5. Media Playback

### 5.2.2. Remote Button Tips in Audio Playback

- **BACK / NEXT button**

During the audio playback, you can go to previous or next file

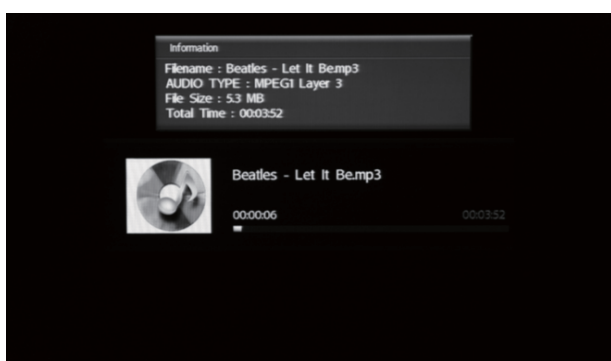
Using BACK / NEXT button



- **INFO button**

Using INFO button, you can check the audio information ; such as file name, file size, playing time and codec.

If there is no Tag information, it displays basic file information.



- **SHUFFLE button (To be supported)**

Press the SHUFFLE button to play the files of the present directory Randomly. Press the SHUFFLE button again to disable the shuffle mode

- **REPEAT button**

Press the REPEAT button to play an audio file repeatedly. Toggle the button to remove repetition







## 5. Media Playback

### 5.2.3. More functions

- **Supports Lyric files (.lrc )**

If the file name of an audio file and .lrc file are the same, the lyrics will be displayed automatically

- **Supports ID3 TAG (ID3V1)**

During the audio playback, press the INFO button to view the ID3 TAG

You can see additional information recorded on the music files; such as the artist, album etc

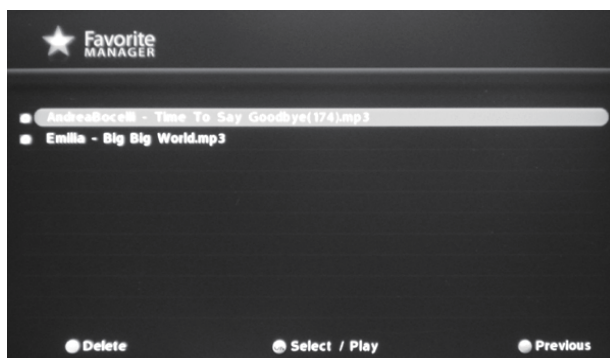
OGG also displays basic Tag information

- **Favorite**

If you want to make the list with your favorite songs, select a song and press Green ( Add Favorite ) key , Then the song is added in the favorite list.

When you want to see the favorite list, press BOOKMARK button in the music list.

The songs in the favorite list play as BGM ( Back Ground Music ) in slide show



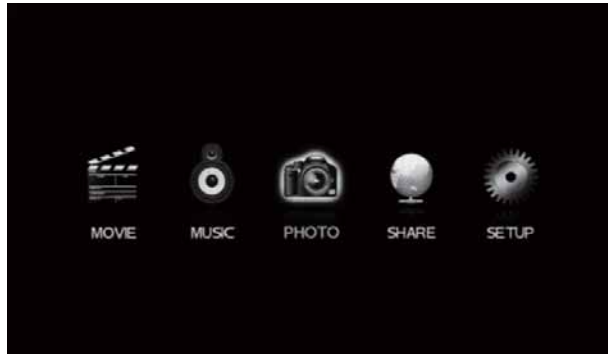


## 5. Media Playback

### 5.3. Image Playback

#### 5.3.1. Basic function

1. Menu Selection : In the Main menu, select PHOTO menu using the left/right button on the remote controller



2. Select the storage : Select a HDD device which the desired image file is stored using left/right button on the remote controller
3. Image file playback : Navigate a folder and a file to playback using the Up/Down button on the remote controller and select using OK button. Then the file gets displayed





## 5. Media Playback

### 5.3.2. Remote Button Tips in Image Playback

- **BACK / NEXT FILE button :**

During the image playback, you can go to previous or next file

Using BACK / NEXT FILE button



- **INFO button :**

Using INFO button, you can check the audio information ; such as file name, resolution and file size



Information  
Filename : 02A10N08\_1.jpg  
Resolution : 1920 x 1080  
File Size : 845.4 KB

### 5.3.3. More functions

- **Slideshow function**

Navigate to the desired file and press PLAY button.

Then the image files continuous – sequential playback.

- Press STOP button to disable the Slideshow mode
- You can set the slideshow time interval at the SETUP menu
- BGM ( Back Ground Music ) in the favorite list playback in the slide show.

- **Sort function**

You can sort your digital image files by NAME and TIME



## 6. Share Manager

### 6.1. Before using Share Manager

#### Requirement 1. Internal Hard Disk Drive

To use Share Manager, the internal Hard Disk Driver **MUST** be installed in the Media player .



#### Requirement 2. Register in CUG Media

To use Share Manager, you **MUST** be a member in the CUG Media service. You can simply register with your registration number found on the rear panel in the website : **www.cugmedia.net**

After registering in CUG Media , you can access full functions in Share Manager.



#### Note

CUG ( Closed User Group ) is a end-user group with Bono Media player who can share between members within the group. It is a kind of social network community which can share the private media contents



## 6. Share Manager

### 6.1. Before using Share Manager

#### Requirement 3. UPnP in network

To use Share Manager, your router should support UPnP function.



#### 1. What is UPnP (universal plug and play) ;

With UPnP (Universal Plug & Play) function, it can easily setup and configure an entire network, enable discovery and control of networked devices and services.

#### 2. UPnP setting in your Router

In the event that your CUG Services are limited, check that your router supports UPnP function ( Refer to the trouble shooting page )

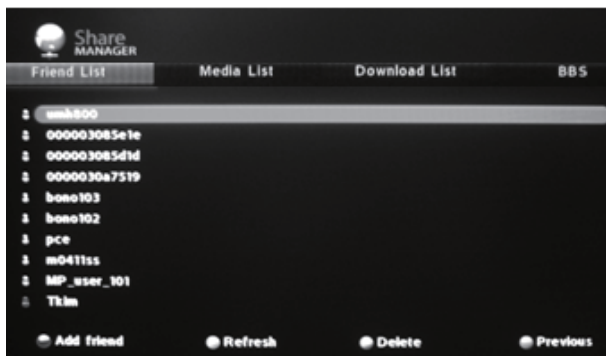


## 6. Share Manager

### 6.2. Friend Management

#### 6.2.1 Friend List

You can see, add and delete your CUG friends in the friend list.



There are the IDs of your CUG friends in the friend list and you can check the status of Bono Media players of your CUG friends as the colors of icon

- **Green** : You can transmit the files from the CUG Friend.
- **Red** : You can not transmit the files from the CUG Friend because the Bono Media player may be turned off or network situation is not proper to Share manager (UPnP must be supported)
- **Gray** : Request for CUG friend is not accepted yet.

#### 6.2.2. Add a friend

You can add a CUG member to share the contents in the friend list. Press RED button to open the popup menu for adding a friend. Enter an ID you desired to add and press OK button. Then your request is delivered to your friend. You should wait until your friend accepts your request and after acceptance, you can find the added ID in the list



You can enter an ID with the numeric buttons on the remote controller. If you want to delete a letter, press BACK button.

#### Tips

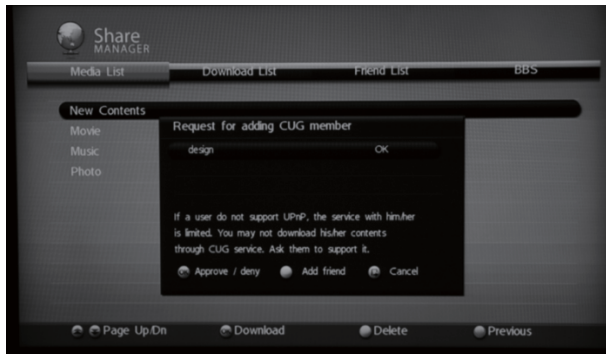
The letters are changed in order : English Minuscule -> English Capital -> Number



## 6. Share Manager

### 6.2. Friend Management

#### 6.2.3. Request for adding a CUG friend



In the event that a CUG member wanting to be your friend tries to add you in the friend list, You can see the popup menu of the request for adding a friend. You can approve or deny as you want for the request.

#### 6.2.4. Refresh the Friend list

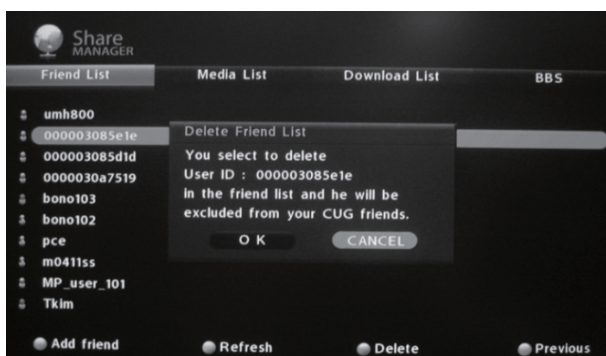
When you want to update the events like friend request, press Green ( Refresh ) button in the friend list.

#### 6.2.5. Check your CUG Friend request

When you want to check that your request for CUG friend is accepted, press Green ( Refresh ) button.

Then go to the ID in gray icon you requested to add and press OK button. In the case that your request is accepted, the icon color of the ID turns green.

#### 6.2.4. Delete a friend



You can delete a friend of your friend list. In the friend list, select a friend you want to delete and press YELLOW button. The popup menu for confirmation is displayed and select OK button. Then the friend is deleted in your list.



#### Note

After deleting a friend in your friend list, you can not share his contents anymore



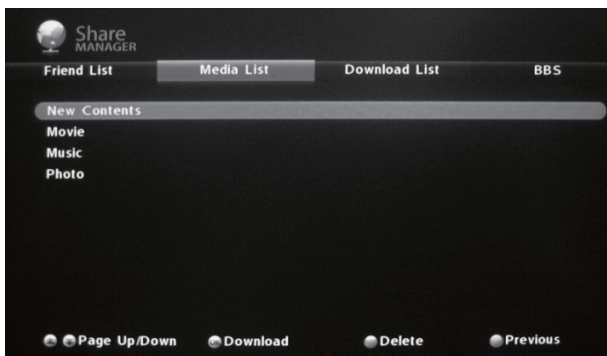
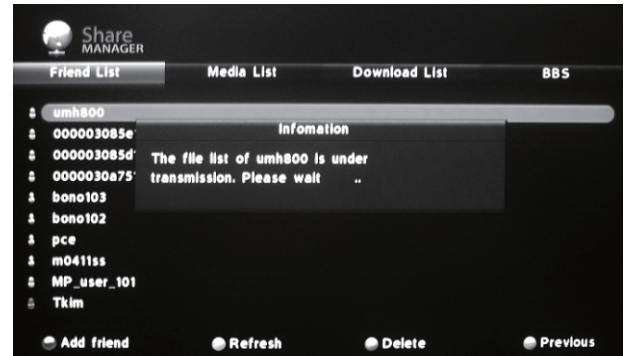
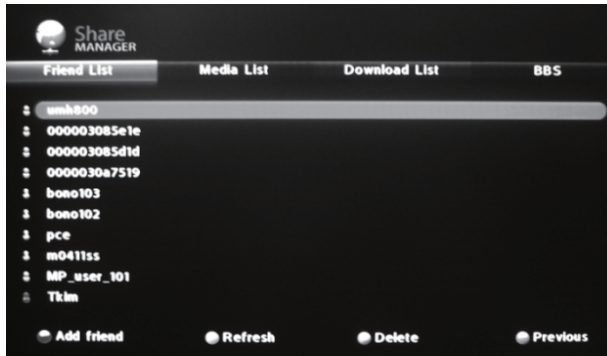


## 6. Share Manager

### 6.3. Media List

The media files in Media list are in the “Share” folder of Media player of your CUG friends

In the friend list, select a friend you want to share the files, and his file list gets transmitted.



Go to Media list, and you can see the files in the Share folder of your CUG friend.

#### 1. New Contents

The contents newly updated in the latest 4 weeks are listed in the New Contents folder. These contents are also listed in the each folder : Movie, Music and Photo as media type.

#### 2. Movie, Music and Photo folder

As the type of media, the sharing contents are listed in each folder.

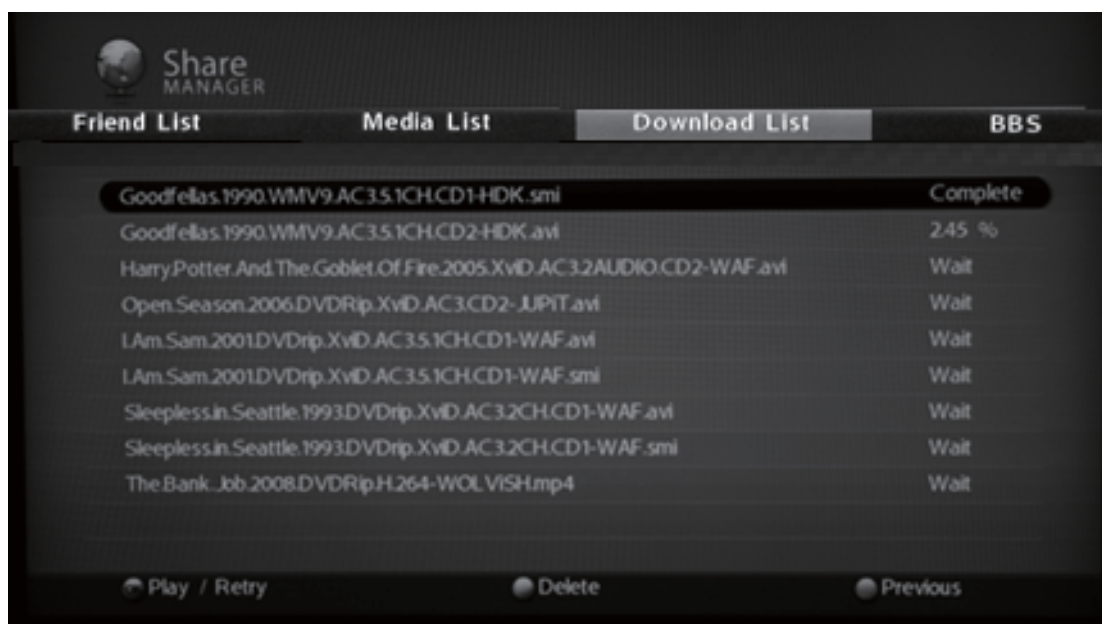
#### 3. Color buttons

- Download : Press Red button to download a sharing media file in the list and the media file gets downloaded in your internal Hard Disk Drive.
- Delete : Press Yellow button to delete a media file in the list. Then the media file gets deleted and a member owned the media file gets deleted in your friend list.
- Previous : Press Blue button to go back to the previous step



## 6. Share Manager

### 6.4. Download List



#### 1. Download List

You can check the status of your download requests in the Download List.

- Complete : downloading is completed
- Fail : downloading gets failed due to some reasons
- In Process : downloading is in process. It is displayed in percentage. ( ex: 24.5% )
- Waiting : downloading is standby

#### 2. Downloaded file

You can find the downloaded file in each share folder of Movie, Music and Photo menu as the media type.

#### 3. Playback in the Download List

In the event that the downloading of a media is in " Complete " or " Processing " ,

you can playback the media file in the Download List.

( In the event of processing, the downloading percentage should be over 70% )



## 6. Share Manager

### 6.5. BBS



#### 1. BBS

You can find the new posts which the CUG members uploaded in the BBS of CUG Media website.

#### 2. A Post

Navigate BBS using the Up/Down button on the remote controller and select a post using OK button. Then the post gets opened.



#### 3. Add a friend

You can add a friend in BBS.

After opening a post of a member, if you want him to be your CUG friend, press Red button.

Then your request is delivered to him. You should wait until he accepts your request. After some times are passed, in the friend list, press Green(refresh) button and go to the requesting ID in gray.

Then press OK button to check his acceptance.



## 7. File Management

### 7.1 Using File Manager

You can manage the files using File Manager without using PC.

You can now copy, move and delete contents from external USB HDD to the internal HDD of Media player and also move & copy the contents within the internal HDD.

#### 1) Select the storage device and find a folder / a file to move or copy :

Go to file manager in Setup menu and select a external storage devices in the list Then navigate the folders and select a file to move or copy in the list.



#### 2) Move / Copy

Press a red button to copy the selected file and navigate the folders and select one. Then the Copy gets started.

Press a Green button to move the selected file and press OK button to select an storage device you want to designate. Navigate the folders and select one. Then the Move gets started.





## 7. File Management

### 3) Delete

You can delete the file in the internal HDD of Media player.

Navigate the file you want to delete and press Yellow button. Confirmation message is displayed and the file get deleted after your confirmation.



### 4) Back

When you want to go back to the previous step, press Blue button.





## 7. File Management

### 7.2. Using U Server

U Server is the program to allow the the connection between the Bono Media player and the PC. After you designate the folders for sharing with the Bono Media player in the U Server installation, the file in the folders can playback directly in the Bono Media player.

#### 7.2.1 Before installation of U Server

When the enclosed CD is put into the CD-ROM of PC , it will be auto-run. After the program list is displayed, select U Server

#### 7.2.2 U Server installation

##### Step 1. Language selection



Select your language preference and click " OK ".

##### Step 2. Starting Setup

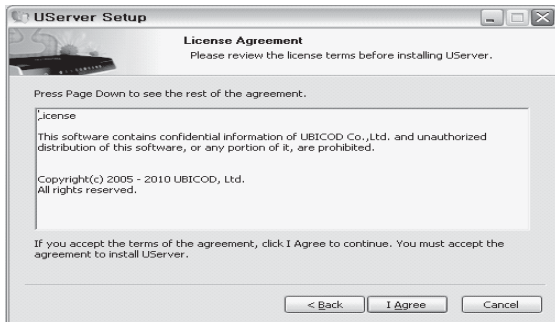


Click " Next " to continue



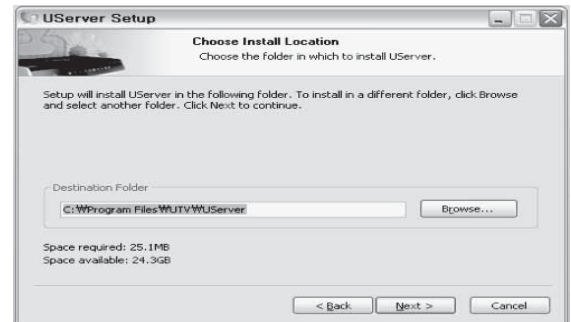
## 7. File Management

### Step 3. License Agreement



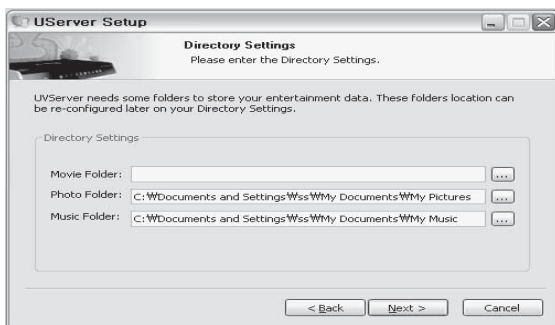
Read over the End user License Agreement and click "I agree" to continue

### 4 . Installation Location selection



Select the destination folder and click "Install" to continue

### 5. Media files Location selection



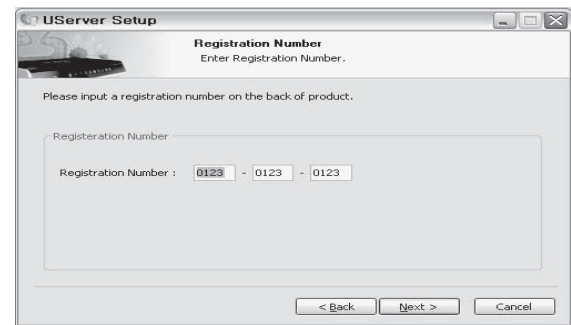
Select the folders to store the media files and get opened in network connection using browsing button. Then click "Next" to continue



#### Tips

The only files in these folders can directly playback in the Bono Media player . In the PC tab of Bono Media player, these folders can be seen.

### 6 . Registration Number



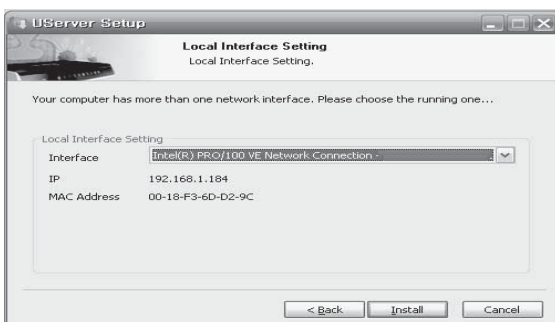
Entered the registration number and click "Next" to continue complete the installation.



#### Tips

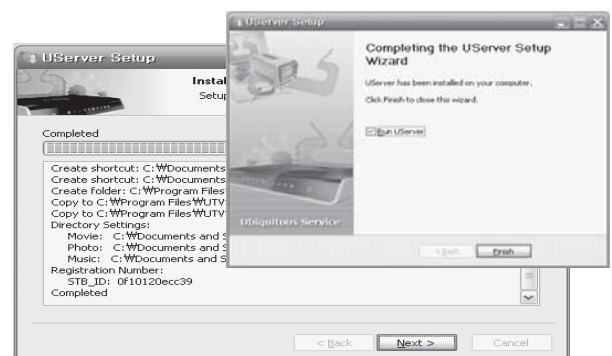
The registration number is the 12 digits of combination of letters and numbers found on the bottom of your Media Player .

### 7 . Local Interface Setting



Select one network interface and click "Install" to continue

### 8 . Completion



Click "Next" to complete and click "Finish" to finish the installation.





## 7. File Management

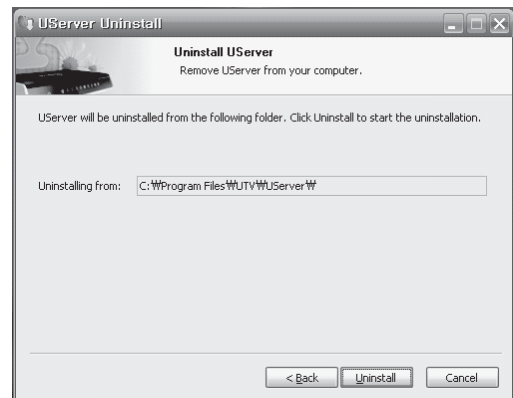
### 7.2.3 U Sever uninstallation



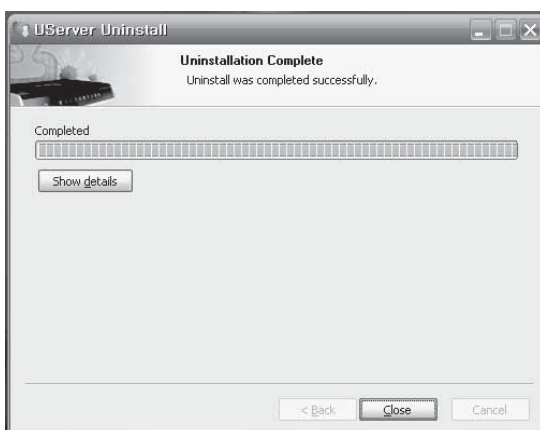
Click "Start" -> Go to PROGRAM -> go to UTV BONO MP -> select Uninstall



Click "Next" to continue



Click "Uninstall"

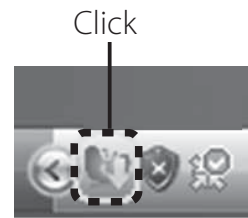
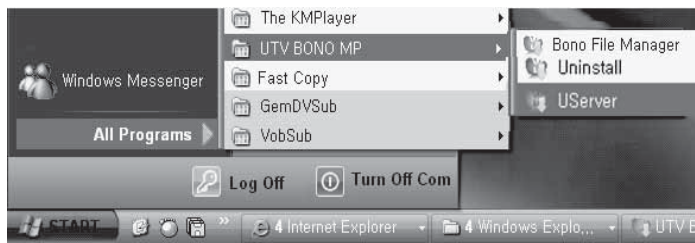


Click "Close" to complete the uninstallation



## 7. File Management

### 7.2.4. Menu of U Server



Click "Start" -> Go to PROGRAM -> go to UTV BONO MP -> select U Server  
or Click the control (right) button of the mouse on the U Server icon

#### » Start

Uses when U Server program gets started

#### » Stop

Uses when U Server program get stopped

#### » Restart

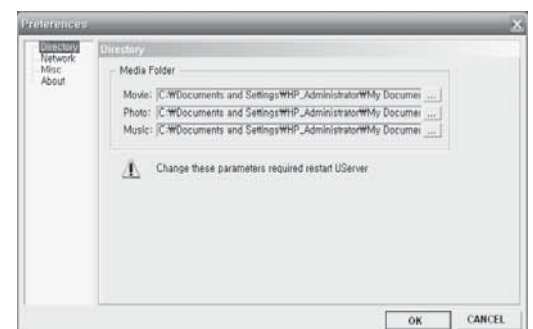
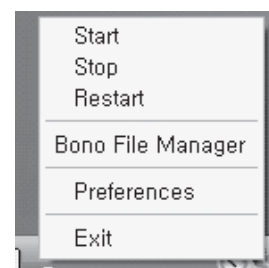
Uses when U Server program get resumed

#### » Bono File Manager

Uses when Bono File Manager gets activated.

#### » Preference

Uses when general options get changed in U Server.



- **Directory:** You can change the setting for the directory location of each media file (Movie, Music, Photo)
- **Network:** You can change the network interface or registration number of the product
- **Misc:** You can change the language of U Server
- **About:** You can check the program version of U Server.



After changing the setting, you should RESTART the U Server.

#### » Exit

Uses when U Server program gets disabled.

After selecting "Exit", control pad of U Server is closed and the icon is disappeared



#### U Server icon

**Tips**

In the event that U Server icon is in green U Server is running and in the event that U Server icon is in gray, U Server is stopped.





## 7. File Management

### 7.2.5. Before using Bono File Manager

Bono MP File Manager is the program which allows a file in a PC to be shared with UTV Bono Media player as well as another PC via network. Bono Media Player supports the FTP Server function and a file can be moved, copied and deleted via network using Bono MP File Manager. In addition, since it can be connected via Internet, the file in the PC can be moved, copied and deleted anywhere using IP address.

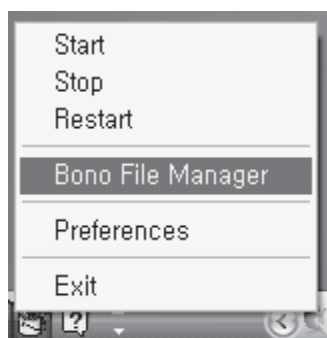
### 7.2.6. Activating Bono File Manager

#### Method 1



Click "Start" -> Go to PROGRAM -> go to UTV BONO MP -> select Bono File Manager

#### Method 2



Click the control (right) button of the mouse on the U Server icon and open the U Server menu page. Then select the Bono File Manager

#### Method 3

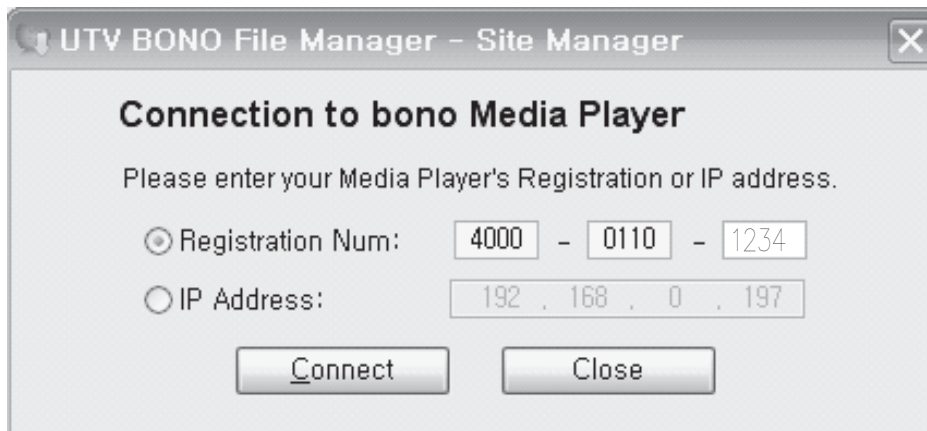


Double – click the shortcut in the desktop



## 7. File Management

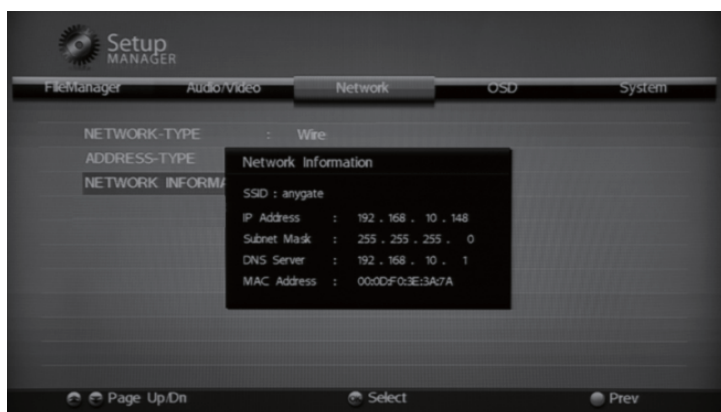
### 7.2.7. Log in Bono File Manager



#### Step 1

When you activate UTV Bono File Manger , log in popup menu is displayed and enter the information of your Media player; such as [ Registration Number ] or [ IP Address ]

- ☞ Registration Number : enter the registration number with 12 digits of combination of letters and numbers found on the bottom of your Media Player. .
- ☞ IP Address : enter the IP address of your Media player. You can check the IP address of Bono Media player in the Network information of Network tab in SETUP menu.



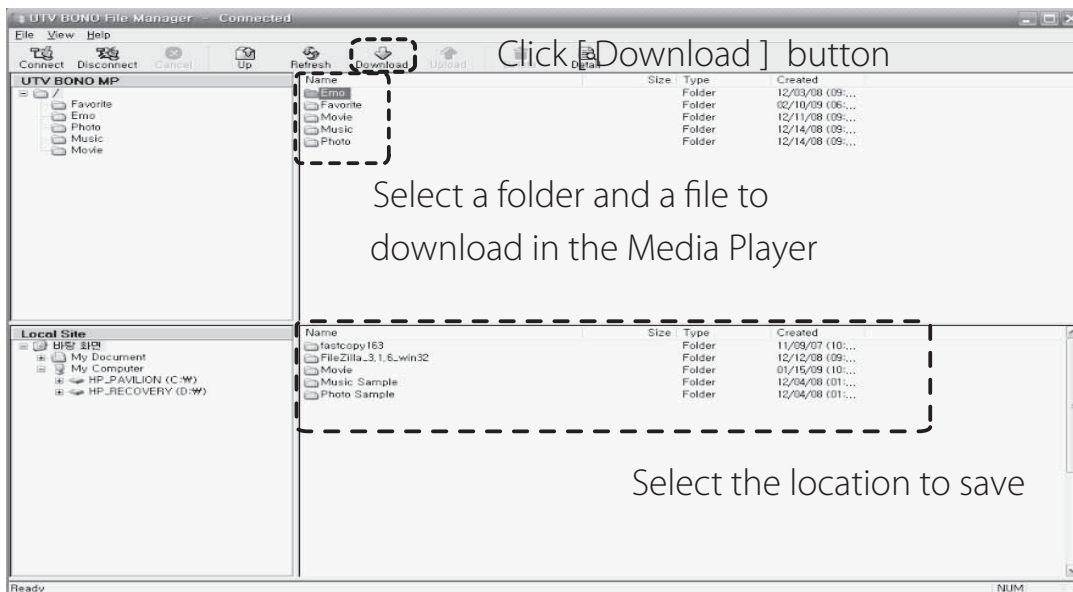
#### Step 2

Press Connect button, and the connection to Bono Media player is done. Then UTV Bono File manager is activated and opened.



## 7. File Management

### 7.2.8 File management using Bono File Manager - Download

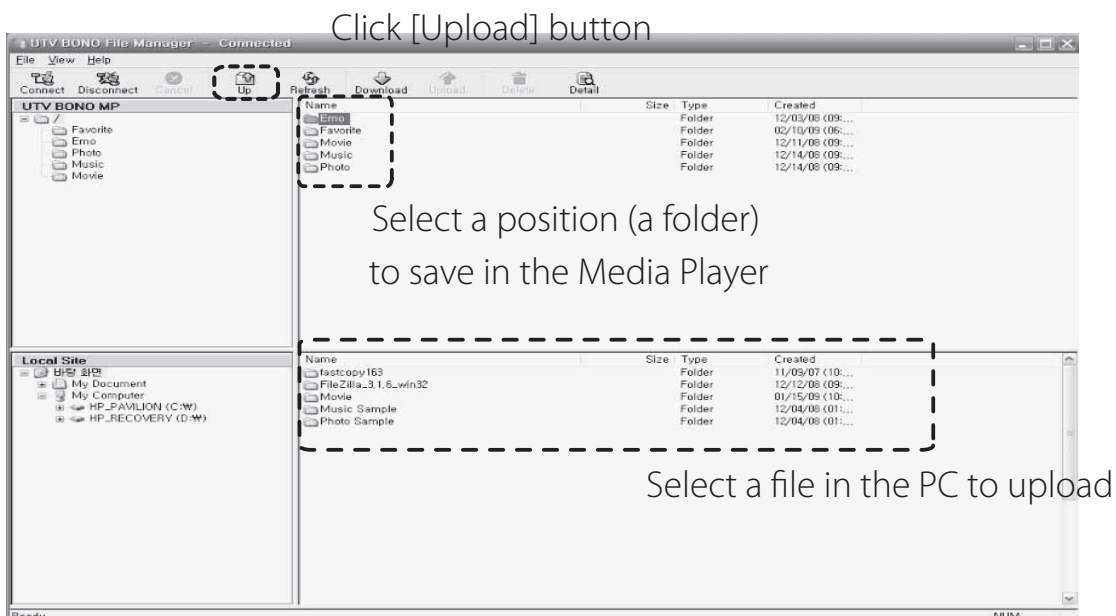


Select a folder in the Media player to download .

Select the location ( a folder ) to save in the PC

Click the DOWNLOAD button to start the downloading from the Bono Media player to PC

### 7.2.9. File management using Bono File Manager - Upload



Select a file in the PC to upload.

Select the location to save in the Media player after uploading

Click the UPLOAD button to start the uploading from PC to the Bono Media player



## 8. Firmware Update

### 8. 1. Firmware Update by downloading the firmware

1. Version Check
2. Downloading the Firmware
  - 1) Download the latest firmware to your PC
  - 2) Connect the Media Player to your PC

### 8. 2. Firmware Update by Network

1. Version Check
2. Go to the firmware update in Setup Manager



3. Select "Yes" to start the Firmware Update
4. After finishing the firmware update, the Media player gets rebooted.



#### Note

For firmware update, the internal HDD MUST be embedded.

## FCC Warning

This device complies with Part 15 of the FCC Rules. Operation is subject to the following two conditions:

- (1) This device may not cause harmful interference.
- (2) This device must accept any interference received, including interference that may cause undesired operation.

15.105 Federal Communications Commission (FCC) Requirements, Part 15

**This equipment has been tested and found to comply with the limits for a class B digital device, pursuant to part 15 of the FCC Rules. These limits are designed to provide reasonable protection against harmful interference in a residential installation.**

**This equipment generates, uses and can radiate radio frequency energy and, if not installed and used in accordance with the instructions, may cause harmful interference to radio communications. However, there is no guarantee that interference will not occur in a particular installation. If this equipment does cause harmful interference to radio or television reception, which can be determined by turning the equipment off and on, the user is encouraged to try to correct the interference by one or more of the following measures:**

- Reorient or relocate the receiving antenna.**
- Increase the separation between the equipment and receiver.**
- Connect the equipment into an outlet on a circuit different from that to which the receiver is connected.**
- Consult the dealer or an experienced radio/TV technician for help.**



## **FCC Warning**

**Any changes or modifications (including the antennas) made to this device that are not expressly approved by the manufacturer may void the user's authority to operate the equipment.**

**FCC RF Radiation Exposure Statement:** This equipment complies with FCC RF radiation exposure limits set forth for an uncontrolled environment. This device and its antenna must not be co-located or operating in conjunction with any other antenna or transmitter.