

FCC SAR TEST REPORT

Applicant: Shenzhen Xinguodu Technology Co.,Ltd.

Address: 17B JinSong Mansion, Terra Industrial & Trade Park
Chegongmiao, Futian District, Shenzhen,Guangdong, China.

Product Name: Mobile Terminal

FCC ID: XDQP300-01

Standard(s): 47 CFR Part 2(2.1093)

Report Number: 2502T61980E-20

Report Date: 2025/07/22

The above device has been tested and found compliant with the requirement of the relative standards by Bay Area Compliance Laboratories Corp. (Dongguan).

Mark Dong

Brave Lu

Reviewed By: Mark Dong
Title: SAR Engineer

Approved By: Brave Lu
Title: SAR Supervisor

Bay Area Compliance Laboratories Corp. (Dongguan)
No.12, Pulong East 1st Road, Tangxia Town, Dongguan, Guangdong, China

Tel: +86-769-86858888

Fax: +86-769-86858891

www.baclcorp.com.cn

Note: The information marked ▲ is provided by the applicant, the laboratory is not responsible for its authenticity and this information can affect the validity of the result in the test report. Unless otherwise stated the results shown in this test report refer only to the sample(s) tested. This report cannot be reproduced except in full, without prior written approval of the Company. This report is valid only with a valid digital signature. The digital signature may be available only under the Adobe software above version 7.0. This report may contain data that are not covered by the accreditation scope and shall be marked with ★. This report must not be used by the client to claim product certification, approval, or endorsement by NVLAP, NIST, or any agency of the U.S. Government. Each test item follows the test standard(s) without deviation.

SAR TEST RESULTS SUMMARY

Body SAR:

Mode		Max. Reported SAR Level(s) (W/kg)	Limit (W/kg)
GSM 850	1g Body SAR	0.53	1.6
PCS 1900	1g Body SAR	0.31	
WCDMA Band 2	1g Body SAR	0.61	
WCDMA Band 5	1g Body SAR	0.51	
LTE Band 2	1g Body SAR	0.50	
LTE Band 4	1g Body SAR	0.60	
LTE Band 5	1g Body SAR	0.44	
LTE Band 7	1g Body SAR	1.21	
LTE Band 38	1g Body SAR	1.12	
WLAN 2.4G	1g Body SAR	0.35	
WLAN 5.2G	1g Body SAR	0.34	
WLAN 5.3G	1g Body SAR	0.38	
WLAN 5.6G	1g Body SAR	0.33	
WLAN 5.8G	1g Body SAR	0.32	
Simultaneous	1g Body SAR	1.59	
	1g Body SAR	1.56(Hotspot)	

Limb SAR:

Mode		Max. Reported SAR Level(s) (W/kg)	Limit (W/kg)
GSM 850	10g Extremity SAR	0.97	4.0
PCS 1900	10g Extremity SAR	0.99	
WCDMA Band 2	10g Extremity SAR	1.65	
WCDMA Band 5	10g Extremity SAR	1.03	
LTE Band 2	10g Extremity SAR	0.80	
LTE Band 4	10g Extremity SAR	1.02	
LTE Band 5	10g Extremity SAR	0.96	
LTE Band 7	10g Extremity SAR	1.80	
LTE Band 38	10g Extremity SAR	1.76	
WLAN 2.4G	10g Extremity SAR	0.70	
WLAN 5.2G	10g Extremity SAR	1.74	
WLAN 5.3G	10g Extremity SAR	1.64	
WLAN 5.6G	10g Extremity SAR	0.51	
WLAN 5.8G	10g Extremity SAR	1.33	
Simultaneous	10g Extremity SAR	3.54	

Applicable Standards	FCC 47 CFR part 2.1093 Radiofrequency radiation exposure evaluation: portable devices
	IEEE 1528:2013 IEEE Recommended Practice for Determining the Peak Spatial-Average Specific Absorption Rate (SAR) in the Human Head from Wireless Communications Devices: Measurement Techniques
	KDB procedures KDB 447498 D01 General RF Exposure Guidance v06 KDB 865664 D01 SAR Measurement 100 MHz to 6 GHz v01r04 KDB 865664 D02 RF Exposure Reporting v01r02 KDB 941225 D01 3G SAR Procedures v03r01 KDB 941225 D05 SAR for LTE Devices v02r05 KDB 248227 D01 802.11 Wi-Fi SAR v02r02
Note: This wireless device has been shown to be capable of compliance for localized specific absorption rate (SAR) for General Population/Uncontrolled Exposure limits specified in FCC 47 CFR part 2.1093 and has been tested in accordance with the measurement procedures specified in IEEE 1528-2013 and RF exposure KDB procedures. The results and statements contained in this report pertain only to the device(s) evaluated.	

CONTENTS

SAR TEST RESULTS SUMMARY	2
DOCUMENT REVISION HISTORY	6
1. GENERAL INFORMATION	7
1.1 PRODUCT DESCRIPTION FOR EQUIPMENT UNDER TEST (EUT).....	7
2. REFERENCE, STANDARDS, AND GUIDELINES	8
2.1 SAR LIMITS.....	8
2.2 TEST FACILITY	9
3. DESCRIPTION OF TEST SYSTEM.....	10
4. EQUIPMENT LIST AND CALIBRATION	15
4.1 EQUIPMENTS LIST & CALIBRATION INFORMATION	15
5. SAR MEASUREMENT SYSTEM VERIFICATION	16
5.1 LIQUID VERIFICATION.....	16
5.2 LIQUID VERIFICATION RESULTS	16
5.3 SYSTEM ACCURACY VERIFICATION	19
5.4 SYSTEM ACCURACY CHECK RESULTS.....	19
5.5 SAR SYSTEM VALIDATION DATA	21
6. EUT TEST STRATEGY AND METHODOLOGY	29
6.1 TEST POSITIONS FOR BODY-WORN AND OTHER CONFIGURATIONS	29
6.2 TEST DISTANCE FOR SAR EVALUATION.....	29
7. CONDUCTED OUTPUT POWER MEASUREMENT.....	30
7.1 TEST PROCEDURE	30
7.2 RADIO CONFIGURATION	30
7.3 MAXIMUM TARGET OUTPUT POWER.....	36
7.4 TEST RESULTS:.....	38
8. STANDALONE SAR TEST EXCLUSION CONSIDERATIONS	55
8.1 ANTENNAS LOCATION:	55
8.2 ANTENNA DISTANCE TO EDGE.....	55
8.3 STANDALONE SAR TEST EXCLUSION CONSIDERATIONS	55
8.4 STANDALONE SAR ESTIMATION:	57
8.5 SAR TEST EXCLUSION FOR THE EUT EDGE CONSIDERATIONS RESULT	57
9. SAR MEASUREMENT RESULTS.....	58
9.1 SAR TEST DATA	58
10. MEASUREMENT VARIABILITY	74
11. DUT HOLDER PERTURBATIONS.....	75
12. SAR SIMULTANEOUS TRANSMISSION DESCRIPTION	76
12.1 SIMULTANEOUS TRANSMISSION:.....	76

12.2 SIMULTANEOUS SAR TEST EXCLUSION CONSIDERATIONS:	76
APPENDIX A - MEASUREMENT UNCERTAINTY	77
APPENDIX B - SAR PLOTS	78
APPENDIX C - EUT TEST POSITION PHOTOS	79
APPENDIX D - PROBE CALIBRATION CERTIFICATES	80
APPENDIX E - DIPOLE CALIBRATION CERTIFICATES	81
APPENDIX F - RETURN LOSS AND IMPEDANCE MEASUREMENT	82

DOCUMENT REVISION HISTORY

Revision Number	Report Number	Description of Revision	Date of Revision
1.0	2502T61980E-20	Original Report	2025/07/22

1. GENERAL INFORMATION

1.1 Product Description for Equipment under Test (EUT)

EUT Name:	Mobile Terminal
EUT Model:	P300
Trade Name:	NEXGO
Device Type:	Portable
Exposure Category:	Population / Uncontrolled
Antenna Type(s):	Internal Antenna
Body-Worn Accessories:	None
Proximity Sensor:	None
Carrier Aggregation:	None
Operation Modes:	GPRS/EGPRS Data, WCDMA(R99 (Data), HSUPA/HSDPA/HSPA+), FDD-LTE, TDD-LTE, WLAN, Bluetooth, BLE and NFC
Frequency Band:	GSM 850: 824-849 MHz(TX); 869-894 MHz(RX)
	PCS 1900: 1850-1910 MHz(TX); 1930-1990 MHz(RX)
	WCDMA Band 2: 1850-1910 MHz(TX); 1930-1990 MHz(RX)
	WCDMA Band 5: 824-849 MHz(TX); 869-894 MHz(RX)
	LTE Band 2: 1850-1910 MHz(TX); 1930-1990 MHz(RX)
	LTE Band 4: 1710-1755 MHz(TX); 2110-2155 MHz(RX)
	LTE Band 5: 824-849 MHz(TX); 869-894 MHz(RX)
	LTE Band 7: 2500-2570 MHz(TX); 2620-2690 MHz(RX)
	LTE Band 38: 2570-2620 MHz(TX); 2570-2620 MHz (RX)
	Wi-Fi 2.4G: 2412-2462 MHz/2422-2452 MHz (TX/RX)
	Wi-Fi 5.2G: 5150-5250 MHz(TX/RX)
	Wi-Fi 5.3G: 5250-5350 MHz(TX/RX)
	Wi-Fi 5.6G: 5470-5725 MHz(TX/RX)
	Wi-Fi 5.8G: 5725-5850 MHz(TX/RX)
	Bluetooth: 2402-2480MHz(TX/RX)
	BLE 1M:2402-2480MHz(TX/RX)
	NFC:13.56MHz
Dimensions (L*W*H):	218mm (L) * 82mm (W) * 64mm (H)
Rated Input Voltage:	DC 7.7V from Rechargeable Battery
Serial Number:	34EY-1
Normal Operation:	Body and Limbs
EUT Received Date:	2025/06/10
Test Date:	2025/06/22~2025/06/24
EUT Received Status:	Good

2. REFERENCE, STANDARDS, AND GUIDELINES

FCC:

The Report and Order requires routine SAR evaluation prior to equipment authorization of portable transmitter devices, including portable telephones. For consumer products, the applicable limit is 1.6 mW/g as recommended by the ANSI/IEEE standard C95.1-1992 [6] for an uncontrolled environment (Paragraph 65). According to the Supplement C of OET Bulletin 65 "Evaluating Compliance with FCC Guide-lines for Human Exposure to Radio frequency Electromagnetic Fields", released on Jun 29, 2001 by the FCC, the device should be evaluated at maximum output power (radiated from the antenna) under "worst-case" conditions for normal or intended use, incorporating normal antenna operating positions, device peak performance frequencies and positions for maximum RF energy coupling.

This report describes the methodology and results of experiments performed on wireless data terminal. The objective was to determine if there is RF radiation and if radiation is found, what is the extent of radiation with respect to safety limits. SAR (Specific Absorption Rate) is the measure of RF exposure determined by the amount of RF energy absorbed by human body (or its parts) – to determine how the RF energy couples to the body or head which is a primary health concern for body worn devices. The limit below which the exposure to RF is considered safe by regulatory bodies in North America is 1.6 mW/g average over 1 gram of tissue mass.

2.1 SAR Limits

FCC Limit

EXPOSURE LIMITS	SAR (W/kg)	
	(General Population / Uncontrolled Exposure Environment)	(Occupational / Controlled Exposure Environment)
Spatial Average (averaged over the whole body)	0.08	0.4
Spatial Peak (averaged over any 1 g of tissue)	1.6	8
Spatial Peak (hands/wrists/feet/ankles averaged over 10 g)	4	20

Population/Uncontrolled Environments are defined as locations where there is the exposure of individual who have no knowledge or control of their exposure.

Occupational/Controlled Environments are defined as locations where there is exposure that maybe incurred by people who are aware of the potential for exposure (i.e. as a result of employment or occupation).

General Population/Uncontrolled environments Spatial Peak limit 1.6 W/kg(FCC) for 1g Body SAR , limit 4 W/kg(FCC) for 10g Extremity SAR applied to the EUT.

2.2 Test Facility

The Test site used by Bay Area Compliance Laboratories Corp. (Dongguan) to collect test data is located on the No.12, Pulong East 1st Road, Tangxia Town, Dongguan, Guangdong, China.

The lab has been recognized as the FCC accredited lab under the KDB 974614 D01 and is listed in the FCC Public Access Link (PAL) database, FCC Registration No. :829273, the FCC Designation No. : CN5044.

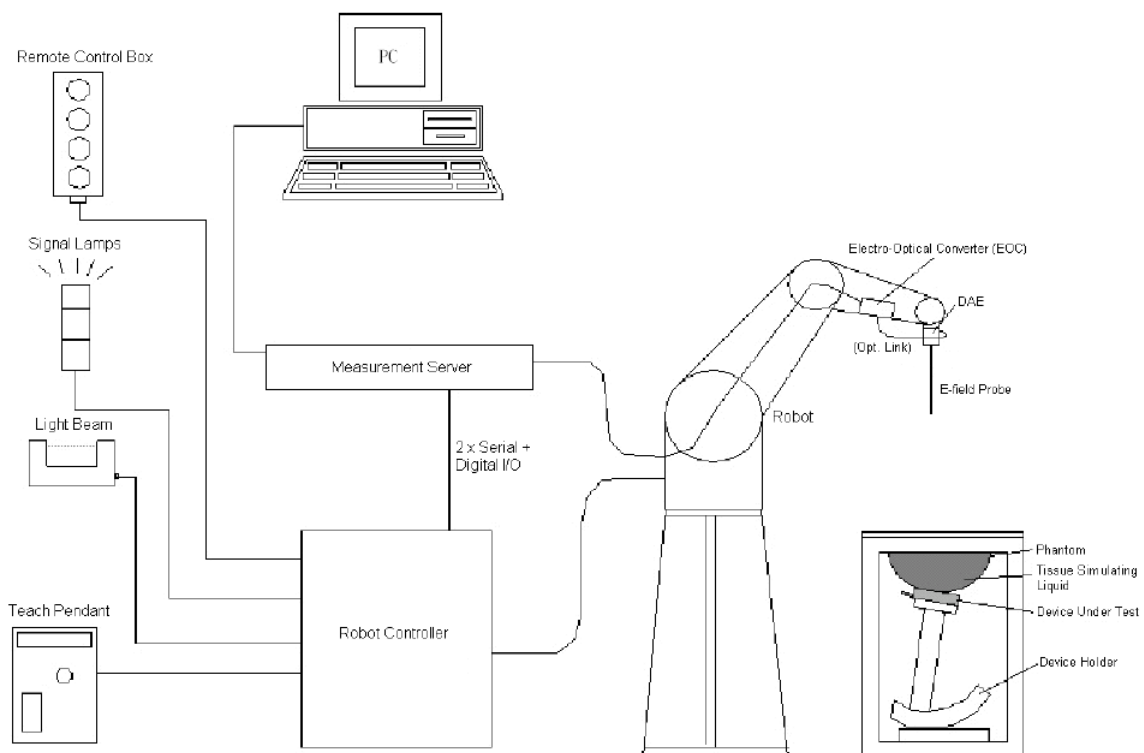
3. DESCRIPTION OF TEST SYSTEM

These measurements were performed with the automated near-field scanning system DASY5 from Schmid & Partner Engineering AG (SPEAG) which is the Fifth generation of the system shown in the figure hereinafter:



DASY5 System Description

The DASY5 system for performing compliance tests consists of the following items:



- A standard high precision 6-axis robot with controller, teach pendant and software. An arm extension for accommodating the data acquisition electronics (DAE).
- An isotropic field probe optimized and calibrated for the targeted measurement.
- A data acquisition electronics (DAE) which performs the signal application, signal multiplexing, AD-conversion, offset measurements, mechanical surface detection, collision detection, etc. The unit is battery powered with standard or rechargeable batteries. The signal is optically transmitted to the EOC.
- The Electro-optical converter (EOC) performs the conversion from optical to electrical signals for the digital communication to the DAE. To use optical surface detection, a special version of the EOC is required. The EOC signal is transmitted to the measurement server.
- The function of the measurement server is to perform the time critical tasks such as signal filtering, control of the robot operation and fast movement interrupts.
- The Light Beam used is for probe alignment. This improves the (absolute) accuracy of the probe positioning.
- A computer running Win7 professional operating system and the DASY52 software.
- Remote control and teach pendant as well as additional circuitry for robot safety such as warning lamps, etc.
- The phantom, the device holder and other accessories according to the targeted measurement.

DASY5 Measurement Server

The DASY5 measurement server is based on a PC/104 CPU board with a 400MHz Intel ULV Celeron, 128MB chip-disk and 128MB RAM. The necessary circuits for communication with the DAE4 (or DAE3) electronics box, as well as the 16 bit AD-converter system for optical detection and digital I/O interface are contained on the DASY5 I/O board, which is directly connected to the PC/104 bus of the CPU board.

The measurement server performs all real-time data evaluation of field measurements and surface detection, controls robot movements and handles safety operation. The PC operating system cannot interfere with these time critical processes. All connections are supervised by a watchdog, and disconnection of any of the cables to the measurement server will automatically disarm the robot and disable all program-controlled robot movements. Furthermore, the measurement server is equipped with an expansion port which is reserved for future applications. Please note that this expansion port does not have a standardized point out, and therefore only devices provided by SPEAG can be connected. Devices from any other supplier could seriously damage the measurement server.



Data Acquisition Electronics

The data acquisition electronics (DAE4) consist of a highly sensitive electrometer-grade preamplifier with auto-zeroing, a channel and gain-switching multiplexer, a fast 16 bit AD-converter and a command decoder with a control logic unit. Transmission to the measurement server is accomplished through an optical downlink for data and status information, as well as an optical uplink for commands and the clock.

The mechanical probe mounting device includes two different sensor systems for frontal and sideways probe contacts. They are used for mechanical surface detection and probe collision detection.

The input impedance of both the DAE4 as well as of the DAE3 box is 200M Ω ; the inputs are symmetrical and floating. Common mode rejection is above 80 dB.

EX3DV4 E-Field Probes

Frequency	4 MHz–10 GHz Linearity: ± 0.2 dB (30 MHz–10 GHz)
Directivity(typical)	± 0.1 dB in TSL (rotation around probe axis) ± 0.3 dB in TSL (rotation normal to probe axis)
Dynamic Range	10 μ W/g – > 100 mW/g Linearity: ± 0.2 dB (noise: typically < 1 μ W/g)
Dimensions	Overall length: 337 mm (tip: 20 mm) Tip diameter: 2.5 mm (body: 12 mm) Typical distance from probe tip to dipole centers: 1 mm
Applications	High precision dosimetric measurements in any exposure scenario (e.g., very strong gradient fields); the only probe that enables compliance testing for frequencies up to 6 GHz with precision of better 30%.
Compatibility	DASY3, DASY4, DASY52, DASY6, DASY8, EASY6, EASY4/MRI

SAM Twin Phantom

The SAM twin phantom is a fiberglass shell phantom with 2mm shell thickness (except the ear region, where shell thickness

increases to 6 mm). The phantom has three measurement areas:

- _ Left Head
- _ Right Head
- _ Flat phantom

The phantom table for the DASY systems based on the robots have the size of 100 x 50 x 85 cm (L x W x H). For easy dislocation these tables have fork lift cut outs at the bottom.

The bottom plate contains three pairs of bolts for locking the device holder. The device holder positions are adjusted to the standard measurement positions in the three sections. Only one device holder is necessary if two phantoms are used (e.g., for different liquids)



A white cover is provided to cover the phantom during off-periods to prevent water evaporation and changes in the liquid parameters. Free space scans of devices on top of this phantom cover are possible.

Three reference marks are provided on the phantom counter. These reference marks are used to teach the absolute phantom position relative to the robot.

Robots

The DASY5 system uses the high precision industrial robot. The robot offers the same features important for our application:

- High precision (repeatability 0.02mm)
- High reliability (industrial design)
- Low maintenance costs (virtually maintenance free due to direct drive gears; no belt drives)
- Jerk-free straight movements (brushless synchrony motors; no stepper motors)
- Low ELF interference (motor control fields shielded via the closed metallic construction shields)

The above mentioned robots are controlled by the Staubli CS7MB robot controllers. All information regarding the use and maintenance of the robot arm and the robot controller is contained on the CDs delivered along with the robot. Paper manuals are available upon request direct from Staubli.

Area Scans

Area scans are defined prior to the measurement process being executed with a user defined variable spacing between each measurement point (integral) allowing low uncertainty measurements to be conducted. Scans defined for FCC applications utilize a 15mm² step integral, with 1.5mm interpolation used to locate the peak SAR area used for zoom scan assessments.

Where the system identifies multiple SAR peaks (which are within 25% of peak value) the system will provide the user with the option of assessing each peak location individually for zoom scan averaging.

Zoom Scan (Cube Scan Averaging)

The averaging zoom scan volume utilized in the DASY5 software is in the shape of a cube and the side dimension of a 1 g or 10 g mass is dependent on the density of the liquid representing the simulated tissue. A density of 1000 kg/m³ is used to represent the head and body tissue density and not the phantom liquid density, in order to be consistent with the definition of the liquid dielectric properties, i.e. the side length of the 1g cube is 10mm, with the side length of the 10g cube is 21.5mm.

When the cube intersects with the surface of the phantom, it is oriented so that 3 vertices touch the surface of the shell or the center of a face is tangent to the surface. The face of the cube closest to the surface is modified in order to conform to the tangent surface.

The zoom scan integer steps can be user defined so as to reduce uncertainty, but normal practice for typical test applications (including FCC) utilize a physical step of 7 x7 x 7 (5mmx5mmx5mm) providing a volume of 30 mm in the X & Y & Z axis.

Tissue Dielectric Parameters for Head and Body Phantoms

The head tissue dielectric parameters recommended by the IEEE 1528:2013

Recommended Tissue Dielectric Parameters for Head liquid

Table 3—Target dielectric properties of head tissue-equivalent material in the 300 MHz to 6000 MHz frequency range

Frequency (MHz)	Relative permittivity (ϵ_r)	Conductivity (σ) (S/m)
300	45.3	0.87
450	43.5	0.87
750	41.9	0.89
835	41.5	0.90
900	41.5	0.97
1450	40.5	1.20
1500	40.4	1.23
1640	40.2	1.31
1750	40.1	1.37
1800	40.0	1.40
1900	40.0	1.40
2000	40.0	1.40
2100	39.8	1.49
2300	39.5	1.67
2450	39.2	1.80
2600	39.0	1.96
3000	38.5	2.40
3500	37.9	2.91
4000	37.4	3.43
4500	36.8	3.94
5000	36.2	4.45
5200	36.0	4.66
5400	35.8	4.86
5600	35.5	5.07
5800	35.3	5.27
6000	35.1	5.48

NOTE—For convenience, permittivity and conductivity values at some frequencies that are not part of the original data from Drossos et al. [B60] or the extension to 5800 MHz are provided (i.e., the values shown in italics). These values were linearly interpolated between the values in this table that are immediately above and below these values, except the values at 6000 MHz that were linearly extrapolated from the values at 3000 MHz and 5800 MHz.

4. EQUIPMENT LIST AND CALIBRATION

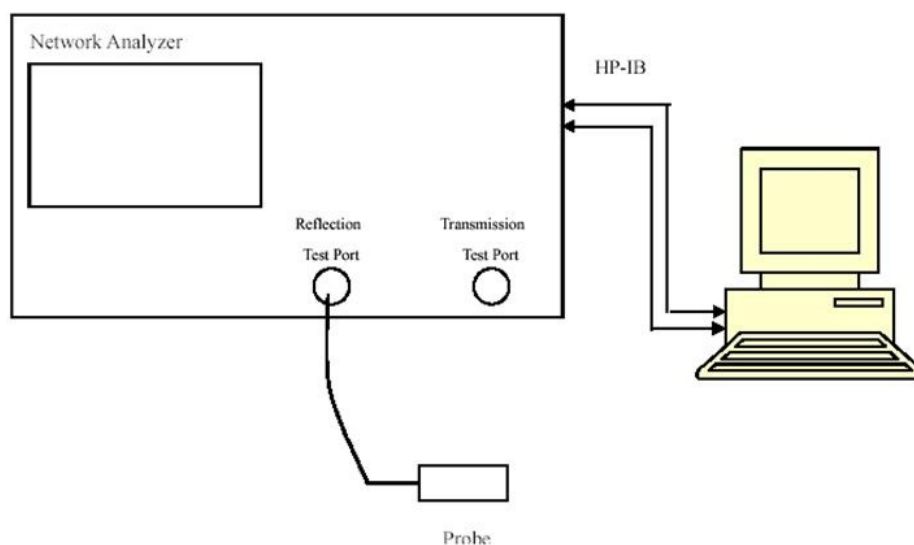
4.1 Equipments List & Calibration Information

Equipment	Model	S/N	Calibration Date	Calibration Due Date
DASY5 Test Software	DASY52.10	N/A	NCR	NCR
DASY5 Measurement Server	DASY5 4.5.12	1470	NCR	NCR
Data Acquisition Electronics	DAE4	772	2025/2/17	2026/2/16
E-Field Probe	EX3DV4	7329	2025/5/26	2026/5/25
Mounting Device	MD4HHTV5	SD 000 H01 KA	NCR	NCR
Twin SAM	Twin SAM V5.0	1874	NCR	NCR
Dipole, 750 MHz	D750V3	1167	2022/10/31	2025/10/30
Dipole, 1750 MHz	D1750V2	1141	2024/6/17	2027/6/16
Dipole, 1900 MHz	D1900V2	543	2022/11/2	2025/11/1
Dipole, 2450 MHz	D2450V2	971	2024/6/15	2027/6/14
Dipole, 2600 MHz	D2600V2	1132	2022/11/1	2025/10/31
Dipole, 5 GHz	D5GHzV2	1246	2022/11/1	2025/10/31
Simulated Tissue Liquid Head	HBBL600-10000V6	SL AAH U16 BC (Batch:220809-1)	Each Time	/
Network Analyzer	8753C +85047A	3029A01355 +3033A02857	2025/5/9	2026/5/8
Dielectric assessment kit	1253	SM DAK 040 CA	NCR	NCR
synthesized signal generator	8665B	3438a00584	2024/10/18	2025/10/17
EPM Series Power Meter	E4419B	MY45103907	2024/10/18	2025/10/17
Power Sensor	8482A	US37296108	2024/10/19	2025/10/18
Power Meter	EPM-441A	GB37481494	2024/10/19	2025/10/18
USB Wideband Power Sensor	U2022XA	MY54170006	2024/10/18	2025/10/17
Power Amplifier	ZHL-5W-202-S+	416402204	NCR	NCR
Power Amplifier	ZVE-6W-83+	637202210	NCR	NCR
Directional Coupler	441493	520Z	NCR	NCR
Attenuator	20dB, 100W	LN749	NCR	NCR
Attenuator	6dB, 150W	2754	NCR	NCR
Thermometer	DTM3000	3635	2024/8/12	2025/8/11
Hygrothermograph	HTC-2	EM072	2024/11/4	2025/11/3
Wireless communication tester	8960	MY50266471	2024/9/5	2025/9/4
Wideband Radio Communication Tester	CMW500	147473	2024/9/5	2025/9/4
Spectrum Analyzer	FSV40	101461	2024/9/5	2025/9/4

* Statement of Traceability: Bay Area Compliance Laboratories Corp. (Dongguan) attests that all calibrations have been performed, traceable to National Primary Standards and International System of Units (SI).

5. SAR MEASUREMENT SYSTEM VERIFICATION

5.1 Liquid Verification



5.2 Liquid Verification Results

Frequency (MHz)	Liquid Type	Liquid Parameter		Target Value		Delta (%)		Tolerance (%)
		ϵ_r	σ (S/m)	ϵ_r	σ (S/m)	$\Delta\epsilon_r$	$\Delta\sigma$ (S/m)	
750	Simulated Tissue Liquid Head	42.967	0.905	41.9	0.89	2.55	1.69	± 5
824.2	Simulated Tissue Liquid Head	42.079	0.923	41.55	0.9	1.27	2.56	± 5
826.4	Simulated Tissue Liquid Head	42.035	0.924	41.54	0.9	1.19	2.67	± 5
829	Simulated Tissue Liquid Head	41.983	0.925	41.53	0.9	1.09	2.78	± 5
836.5	Simulated Tissue Liquid Head	41.884	0.931	41.5	0.9	0.93	3.44	± 5
836.6	Simulated Tissue Liquid Head	41.883	0.931	41.5	0.9	0.92	3.44	± 5
844	Simulated Tissue Liquid Head	41.74	0.933	41.5	0.91	0.58	2.53	± 5
846.6	Simulated Tissue Liquid Head	41.674	0.932	41.5	0.91	0.42	2.42	± 5
848.8	Simulated Tissue Liquid Head	41.618	0.932	41.5	0.91	0.28	2.42	± 5

*Liquid Verification above was performed on 2025/06/22.

Frequency (MHz)	Liquid Type	Liquid Parameter		Target Value		Delta (%)		Tolerance (%)
		ϵ_r	σ (S/m)	ϵ_r	σ (S/m)	$\Delta\epsilon_r$	$\Delta\sigma$ (S/m)	
1720	Simulated Tissue Liquid Head	39.641	1.357	40.13	1.35	-1.22	0.52	± 5
1732.5	Simulated Tissue Liquid Head	39.62	1.369	40.12	1.36	-1.25	0.66	± 5
1745	Simulated Tissue Liquid Head	39.496	1.379	40.1	1.37	-1.51	0.66	± 5
1750	Simulated Tissue Liquid Head	39.448	1.384	40.1	1.37	-1.63	1.02	± 5

*Liquid Verification above was performed on 2025/06/24.

Frequency (MHz)	Liquid Type	Liquid Parameter		Target Value		Delta (%)		Tolerance (%)
		ϵ_r	σ (S/m)	ϵ_r	σ (S/m)	$\Delta\epsilon_r$	$\Delta\sigma$ (S/m)	
1850.2	Simulated Tissue Liquid Head	39.608	1.431	40.00	1.40	-0.98	2.21	± 5
1852.4	Simulated Tissue Liquid Head	39.569	1.432	40.00	1.40	-1.08	2.29	± 5
1860	Simulated Tissue Liquid Head	39.434	1.433	40.00	1.40	-1.42	2.36	± 5
1880	Simulated Tissue Liquid Head	39.414	1.436	40.00	1.40	-1.47	2.57	± 5
1900	Simulated Tissue Liquid Head	39.337	1.432	40.00	1.40	-1.66	2.29	± 5
1907.6	Simulated Tissue Liquid Head	39.186	1.434	40.00	1.40	-2.04	2.43	± 5
1909.8	Simulated Tissue Liquid Head	39.142	1.434	40.00	1.40	-2.14	2.43	± 5

*Liquid Verification above was performed on 2025/06/22.

Frequency (MHz)	Liquid Type	Liquid Parameter		Target Value		Delta (%)		Tolerance (%)
		ϵ_r	σ (S/m)	ϵ_r	σ (S/m)	$\Delta\epsilon_r$	$\Delta\sigma$ (S/m)	
2412	Simulated Tissue Liquid Head	40.593	1.8	39.28	1.77	3.34	1.69	± 5
2437	Simulated Tissue Liquid Head	40.532	1.828	39.23	1.79	3.32	2.12	± 5
2450	Simulated Tissue Liquid Head	40.498	1.845	39.2	1.8	3.31	2.5	± 5
2462	Simulated Tissue Liquid Head	40.386	1.863	39.18	1.81	3.08	2.93	± 5
2506	Simulated Tissue Liquid Head	40.262	1.91	39.13	1.86	2.89	2.69	± 5
2510	Simulated Tissue Liquid Head	40.354	1.919	39.12	1.86	3.15	3.17	± 5
2535	Simulated Tissue Liquid Head	40.14	1.913	39.09	1.89	2.69	1.22	± 5

*Liquid Verification above was performed on 2025/06/23.

Frequency (MHz)	Liquid Type	Liquid Parameter		Target Value		Delta (%)		Tolerance (%)
		ϵ_r	σ (S/m)	ϵ_r	σ (S/m)	$\Delta\epsilon_r$	$\Delta\sigma$ (S/m)	
2560	Simulated Tissue Liquid Head	40.251	1.991	39.05	1.92	3.08	3.7	± 5
2580	Simulated Tissue Liquid Head	40.219	2.009	39.03	1.94	3.05	3.56	± 5
2595	Simulated Tissue Liquid Head	40.148	2.031	39.01	1.95	2.92	4.15	± 5
2600	Simulated Tissue Liquid Head	40.133	2.034	39	1.96	2.91	3.78	± 5
2610	Simulated Tissue Liquid Head	40.14	2.047	38.99	1.97	2.95	3.91	± 5

*Liquid Verification above was performed on 2025/06/23.

Frequency (MHz)	Liquid Type	Liquid Parameter		Target Value		Delta (%)		Tolerance (%)
		ϵ_r	σ (S/m)	ϵ_r	σ (S/m)	$\Delta\epsilon_r$	$\Delta\sigma$ (S/m)	
5180	Simulated Tissue Liquid Head	35.765	4.55	36.02	4.64	-0.71	-1.94	± 5
5200	Simulated Tissue Liquid Head	35.722	4.566	36	4.66	-0.77	-2.02	± 5
5240	Simulated Tissue Liquid Head	35.652	4.614	35.96	4.7	-0.86	-1.83	± 5
5250	Simulated Tissue Liquid Head	35.641	4.623	35.95	4.71	-0.86	-1.85	± 5
5260	Simulated Tissue Liquid Head	35.598	4.632	35.94	4.72	-0.95	-1.86	± 5
5280	Simulated Tissue Liquid Head	35.51	4.654	35.92	4.74	-1.14	-1.81	± 5
5320	Simulated Tissue Liquid Head	35.431	4.694	35.88	4.78	-1.25	-1.8	± 5

*Liquid Verification above was performed on 2025/06/24.

Frequency (MHz)	Liquid Type	Liquid Parameter		Target Value		Delta (%)		Tolerance (%)
		ϵ_r	σ (S/m)	ϵ_r	σ (S/m)	$\Delta\epsilon_r$	$\Delta\sigma$ (S/m)	
5500	Simulated Tissue Liquid Head	35.001	4.91	35.65	4.97	-1.82	-1.21	± 5
5580	Simulated Tissue Liquid Head	34.777	5.014	35.53	5.05	-2.12	-0.71	± 5
5600	Simulated Tissue Liquid Head	34.737	5.056	35.5	5.07	-2.15	-0.28	± 5
5700	Simulated Tissue Liquid Head	34.593	5.146	35.4	5.17	-2.28	-0.46	± 5

*Liquid Verification above was performed on 2025/06/24.

Frequency (MHz)	Liquid Type	Liquid Parameter		Target Value		Delta (%)		Tolerance (%)
		ϵ_r	σ (S/m)	ϵ_r	σ (S/m)	$\Delta\epsilon_r$	$\Delta\sigma$ (S/m)	
5745	Simulated Tissue Liquid Head	34.489	5.206	35.36	5.22	-2.46	-0.27	± 5
5750	Simulated Tissue Liquid Head	34.465	5.215	35.35	5.22	-2.5	-0.1	± 5
5785	Simulated Tissue Liquid Head	34.387	5.251	35.32	5.26	-2.64	-0.17	± 5
5825	Simulated Tissue Liquid Head	34.371	5.342	35.28	5.3	-2.58	0.79	± 5

*Liquid Verification above was performed on 2025/06/24.

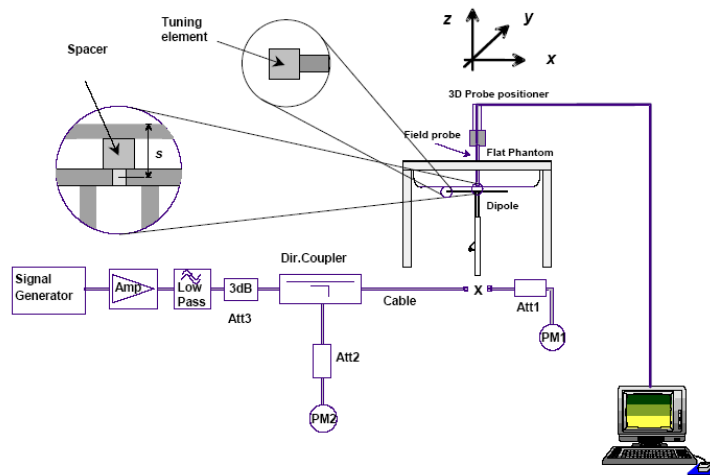
5.3 System Accuracy Verification

Prior to the assessment, the system validation kit was used to test whether the system was operating within its specifications of $\pm 10\%$. The validation results are tabulated below. And also the corresponding SAR plot is attached as well in the SAR plots files.

The spacing distances in the **System Verification Setup Block Diagram** is given by the following:

- $s = 15 \text{ mm} \pm 0,2 \text{ mm}$ for $300 \text{ MHz} \leq f \leq 1\,000 \text{ MHz}$;
- $s = 10 \text{ mm} \pm 0,2 \text{ mm}$ for $1\,000 \text{ MHz} < f \leq 3\,000 \text{ MHz}$;
- $s = 10 \text{ mm} \pm 0,2 \text{ mm}$ for $3\,000 \text{ MHz} < f \leq 6\,000 \text{ MHz}$.

System Verification Setup Block Diagram



5.4 System Accuracy Check Results

Date	Frequency Band (MHz)	Liquid Type	Input Power (mW)	Measured SAR (W/kg)	Normalized to 1W (W/kg)	Target Value (W/Kg)	Delta (%)	Tolerance (%)
2025/06/22	750	Simulated Tissue Liquid Head	100	1g 0.822	8.22	8.48	-3.07	± 10
2025/06/24	1750	Simulated Tissue Liquid Head	100	1g 3.49	34.9	36.1	-3.32	± 10
2025/06/22	1900	Simulated Tissue Liquid Head	100	1g 3.75	37.5	40.2	-6.72	± 10
2025/06/23	2450	Simulated Tissue Liquid Head	100	1g 5.11	51.1	52.7	-3.04	± 10
2025/06/23	2600	Simulated Tissue Liquid Head	100	1g 5.39	53.9	55.8	-3.41	± 10
2025/06/24	5250	Simulated Tissue Liquid Head	100	1g 7.26	72.6	77.5	-6.32	± 10
2025/06/24	5600	Simulated Tissue Liquid Head	100	1g 7.67	76.7	80.7	-4.96	± 10
2025/06/24	5750	Simulated Tissue Liquid Head	100	1g 7.68	76.8	78.4	-2.04	± 10

Note: All the SAR values are normalized to 1Watt forward power.

Date	Frequency Band (MHz)	Liquid Type	Input Power (mW)	Measured SAR (W/kg)	Normalized to 1W (W/kg)	Target Value (W/Kg)	Delta (%)	Tolerance (%)
2025/06/22	750	Simulated Tissue Liquid Head	100	10g 0.545	5.45	5.63	-3.20	±10
2025/06/24	1750	Simulated Tissue Liquid Head	100	10g 1.85	18.5	19.4	-4.64	±10
2025/06/22	1900	Simulated Tissue Liquid Head	100	10g 1.96	19.6	20.9	-6.22	±10
2025/06/23	2450	Simulated Tissue Liquid Head	100	10g 2.38	23.8	24.8	-4.03	±10
2025/06/23	2600	Simulated Tissue Liquid Head	100	10g 2.40	24	25.4	-5.51	±10
2025/06/24	5250	Simulated Tissue Liquid Head	100	10g 2.08	20.8	22	-5.45	±10
2025/06/24	5600	Simulated Tissue Liquid Head	100	10g 2.19	21.9	22.8	-3.95	±10
2025/06/24	5750	Simulated Tissue Liquid Head	100	10g 2.29	22.9	22	4.09	±10

Note: All the SAR values are normalized to 1Watt forward power.

5.5 SAR SYSTEM VALIDATION DATA

System Performance 750 MHz Head

DUT: D750V3; Type: 750 MHz; Serial: 1167

Communication System: CW (0); Frequency: 750 MHz; Duty Cycle: 1:1
Medium parameters used: $f = 750$ MHz; $\sigma = 0.905$ S/m; $\epsilon_r = 42.967$; $\rho = 1000$ kg/m³;
Phantom section: Flat Section

DASY5 Configuration:

- Probe: EX3DV4 - SN7329; ConvF(10.2, 10.2, 10.2) @ 750 MHz; Calibrated: 2025/5/26
- Sensor-Surface: 1.4mm (Mechanical Surface Detection)
- Electronics: DAE4 Sn772; Calibrated: 2025/2/17
- Phantom: SAM (30deg probe tilt) with CRP v5.0_20150321; Type: QD000P40CD; Serial: TP:1874
- Measurement SW: DASY52, Version 52.10 (2); SEMCAD X Version 14.6.14 (7501)

Area Scan (6x15x1): Measurement grid: dx=15mm, dy=15mm

Maximum value of SAR (measured) = 0.951 W/kg

Zoom Scan (5x5x7)/Cube 0: Measurement grid: dx=8mm, dy=8mm, dz=5mm

Reference Value = 31.83 V/m; Power Drift = -0.13 dB

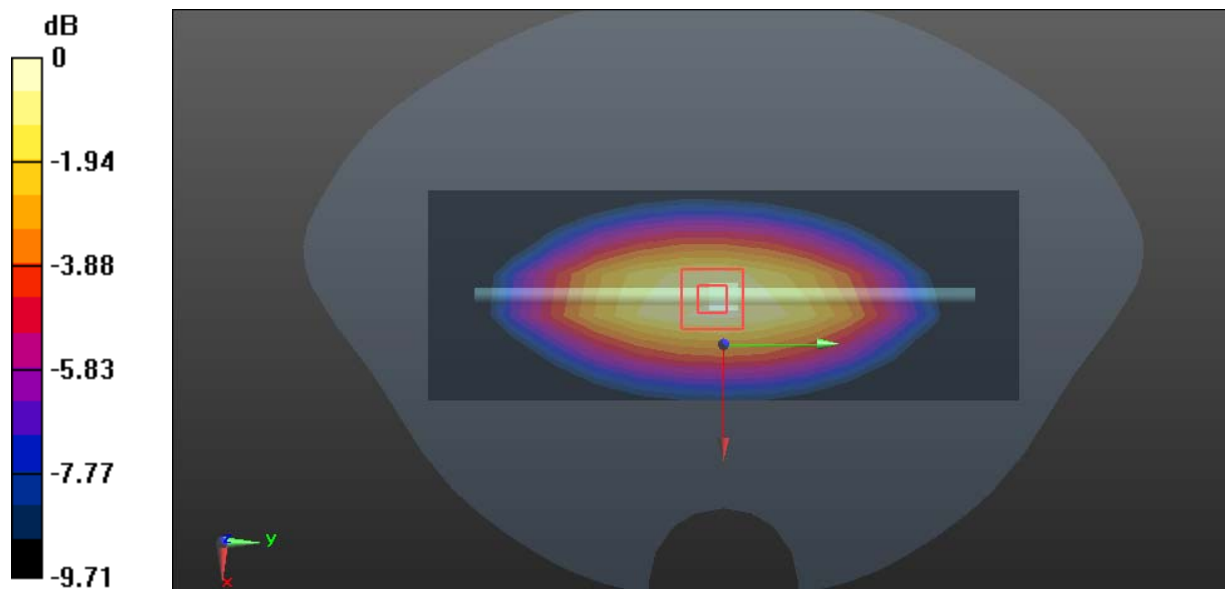
Peak SAR (extrapolated) = 1.18 W/kg

SAR(1 g) = 0.822 W/kg; SAR(10 g) = 0.545 W/kg

Smallest distance from peaks to all points 3 dB below: Larger than measurement grid (> 16 mm)

Ratio of SAR at M2 to SAR at M1 = 70.8%

Maximum value of SAR (measured) = 1.05 W/kg



0 dB = 1.05 W/kg = 0.21 dBW/kg

System Performance 1750 MHz Head**DUT: D1750V2; Type: 1750 MHz; Serial: 1141**

Communication System: CW (0); Frequency: 1750 MHz; Duty Cycle: 1:1

Medium parameters used: $f = 1750$ MHz; $\sigma = 1.384$ S/m; $\epsilon_r = 39.448$; $\rho = 1000$ kg/m³;

Phantom section: Flat Section

DASY5 Configuration:

- Probe: EX3DV4 - SN7329; ConvF(8.45, 8.45, 8.45) @ 1750 MHz; Calibrated: 2025/5/26
- Sensor-Surface: 1.4mm (Mechanical Surface Detection)
- Electronics: DAE4 Sn772; Calibrated: 2025/2/17
- Phantom: SAM (30deg probe tilt) with CRP v5.0_20150321; Type: QD000P40CD; Serial: TP:1874
- Measurement SW: DASY52, Version 52.10 (2); SEMCAD X Version 14.6.14 (7501)

Area Scan (6x9x1): Measurement grid: dx=15mm, dy=15mm

Maximum value of SAR (measured) = 3.96 W/kg

Zoom Scan (5x5x7)/Cube 0: Measurement grid: dx=8mm, dy=8mm, dz=5mm

Reference Value = 52.05 V/m; Power Drift = 0.09 dB

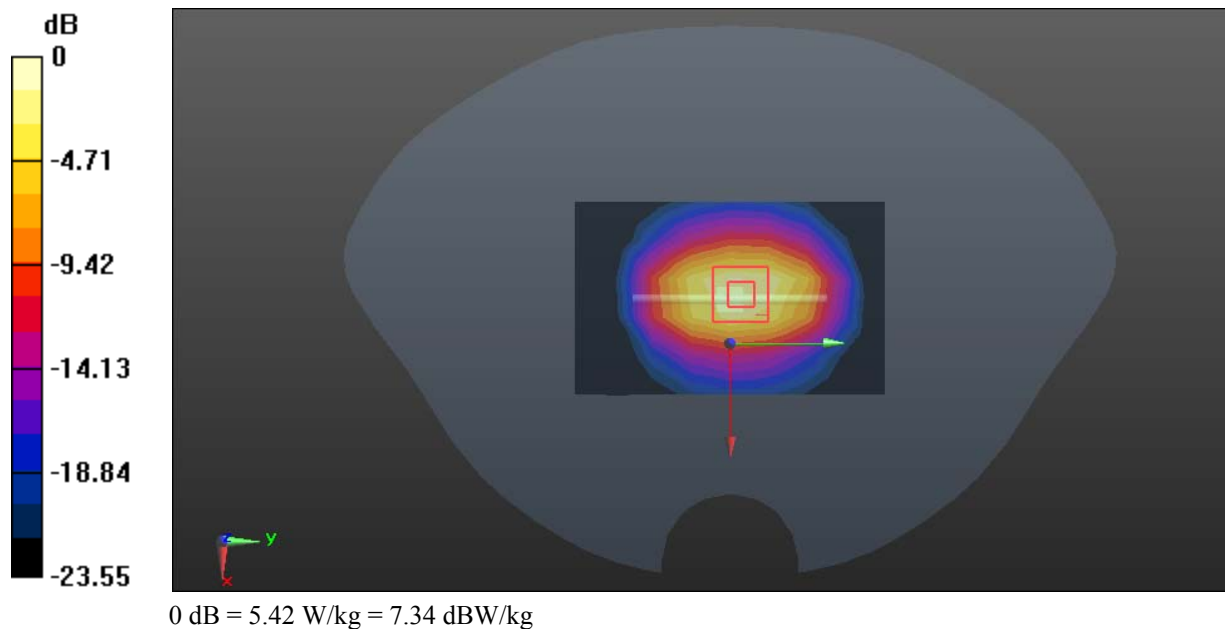
Peak SAR (extrapolated) = 6.44 W/kg

SAR(1 g) = 3.49 W/kg; SAR(10 g) = 1.85 W/kg

Smallest distance from peaks to all points 3 dB below = 10.3 mm

Ratio of SAR at M2 to SAR at M1 = 54.1%

Maximum value of SAR (measured) = 5.42 W/kg



System Performance 1900 MHz Head**DUT: D1900V2; Type: 1900 MHz; Serial: 543**

Communication System: CW (0); Frequency: 1900 MHz; Duty Cycle: 1:1

Medium parameters used: $f = 1900$ MHz; $\sigma = 1.432$ S/m; $\epsilon_r = 39.337$; $\rho = 1000$ kg/m³;

Phantom section: Flat Section

DASY5 Configuration:

- Probe: EX3DV4 - SN7329; ConvF(8.12, 8.12, 8.12) @ 1900 MHz; Calibrated: 2025/5/26
- Sensor-Surface: 1.4mm (Mechanical Surface Detection)
- Electronics: DAE4 Sn772; Calibrated: 2025/2/17
- Phantom: SAM (30deg probe tilt) with CRP v5.0_20150321; Type: QD000P40CD; Serial: TP:1874
- Measurement SW: DASY52, Version 52.10 (2); SEMCAD X Version 14.6.14 (7501)

Area Scan (6x9x1): Measurement grid: dx=15mm, dy=15mm

Maximum value of SAR (measured) = 3.98 W/kg

Zoom Scan (5x5x7)/Cube 0: Measurement grid: dx=8mm, dy=8mm, dz=5mm

Reference Value = 55.45 V/m; Power Drift = -0.11 dB

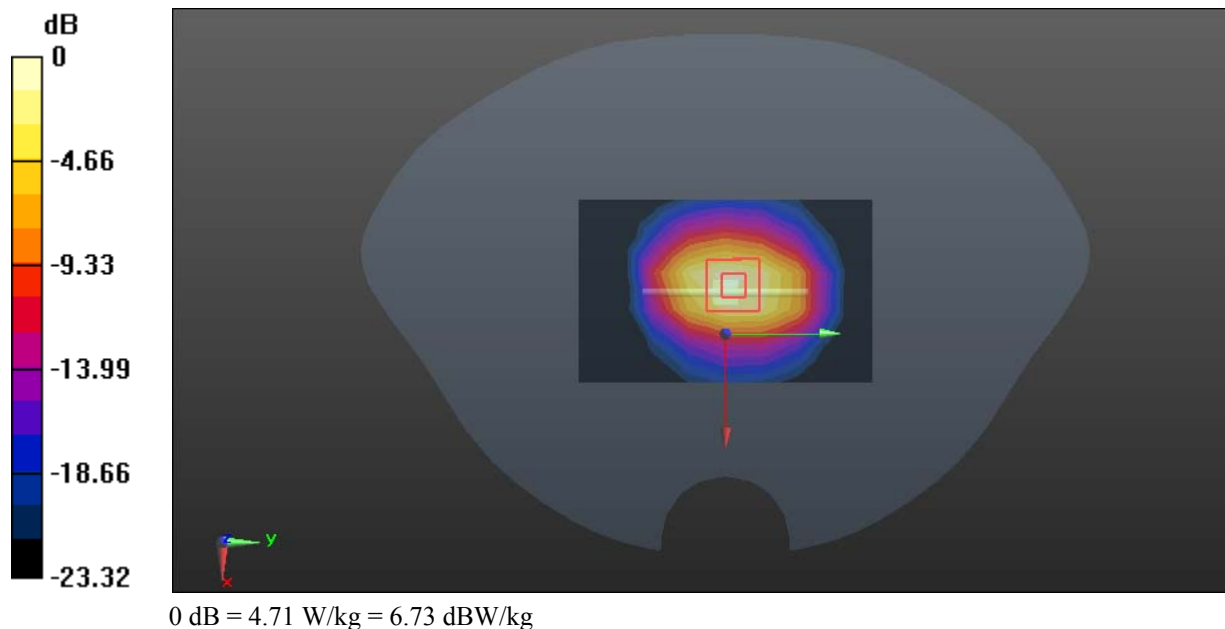
Peak SAR (extrapolated) = 6.86 W/kg

SAR(1 g) = 3.75 W/kg; SAR(10 g) = 1.96 W/kg

Smallest distance from peaks to all points 3 dB below = 9.8 mm

Ratio of SAR at M2 to SAR at M1 = 55.4%

Maximum value of SAR (measured) = 4.71 W/kg



System Performance 2450 MHz Head**DUT: D2450V2; Type: 2450 MHz; Serial: 971**

Communication System: CW (0); Frequency: 2450 MHz; Duty Cycle: 1:1

Medium parameters used: $f = 2450$ MHz; $\sigma = 1.845$ S/m; $\epsilon_r = 40.498$; $\rho = 1000$ kg/m³;

Phantom section: Flat Section

DASY5 Configuration:

- Probe: EX3DV4 - SN7329; ConvF(7.68, 7.68, 7.68) @ 2450 MHz; Calibrated: 2025/5/26
- Sensor-Surface: 1.4mm (Mechanical Surface Detection)
- Electronics: DAE4 Sn772; Calibrated: 2025/2/17
- Phantom: SAM (30deg probe tilt) with CRP v5.0_20150321; Type: QD000P40CD; Serial: TP:1874
- Measurement SW: DASY52, Version 52.10 (2); SEMCAD X Version 14.6.14 (7501)

Area Scan (7x11x1): Measurement grid: dx=12mm, dy=12mm

Maximum value of SAR (measured) = 8.11 W/kg

Zoom Scan (7x7x7)/Cube 0: Measurement grid: dx=5mm, dy=5mm, dz=5mm

Reference Value = 56.51 V/m; Power Drift = -0.13 dB

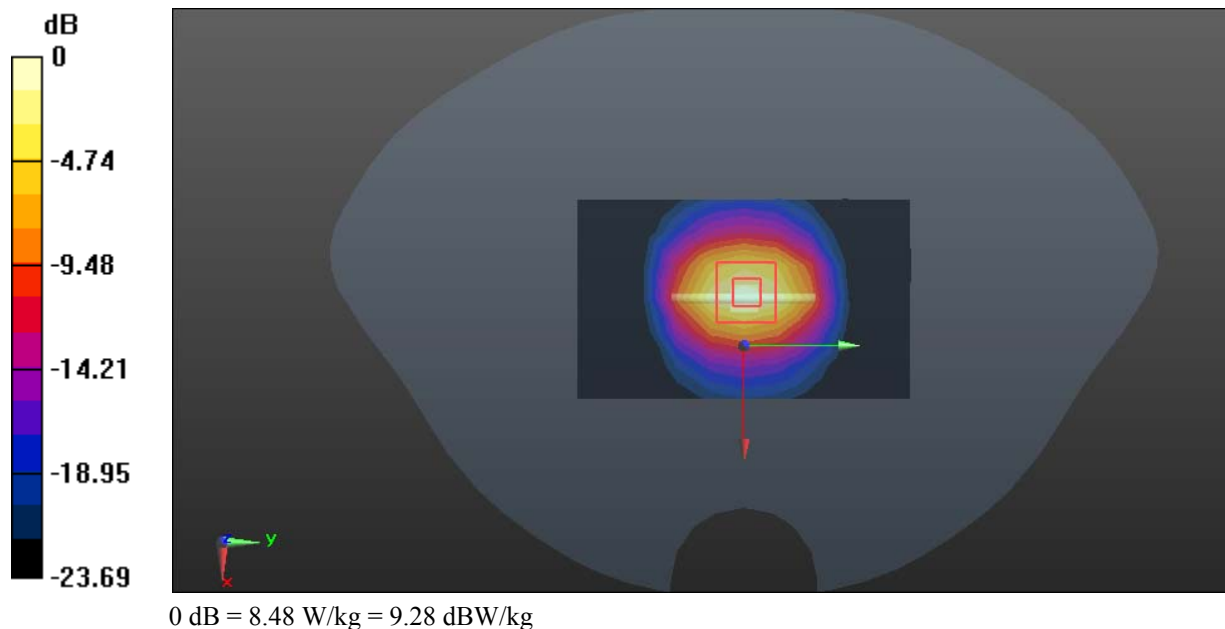
Peak SAR (extrapolated) = 10.4 W/kg

SAR(1 g) = 5.11 W/kg; SAR(10 g) = 2.38 W/kg

Smallest distance from peaks to all points 3 dB below = 9.2 mm

Ratio of SAR at M2 to SAR at M1 = 49.5%

Maximum value of SAR (measured) = 8.48 W/kg



System Performance 2600 MHz Head**DUT: D2600V2; Type: 2600 MHz; Serial: 1132**

Communication System: CW (0); Frequency: 2600 MHz; Duty Cycle: 1:1

Medium parameters used: $f = 2600$ MHz; $\sigma = 2.034$ S/m; $\epsilon_r = 40.133$; $\rho = 1000$ kg/m³;

Phantom section: Flat Section

DASY5 Configuration:

- Probe: EX3DV4 - SN7329; ConvF(7.5, 7.5, 7.5) @ 2600 MHz; Calibrated: 2025/5/26
- Sensor-Surface: 1.4mm (Mechanical Surface Detection)
- Electronics: DAE4 Sn772; Calibrated: 2025/2/17
- Phantom: SAM (30deg probe tilt) with CRP v5.0_20150321; Type: QD000P40CD; Serial: TP:1874
- Measurement SW: DASY52, Version 52.10 (2); SEMCAD X Version 14.6.14 (7501)

Area Scan (7x11x1): Measurement grid: dx=12mm, dy=12mm

Maximum value of SAR (measured) = 7.04 W/kg

Zoom Scan (7x7x7)/Cube 0: Measurement grid: dx=5mm, dy=5mm, dz=5mm

Reference Value = 54.76 V/m; Power Drift = -0.02 dB

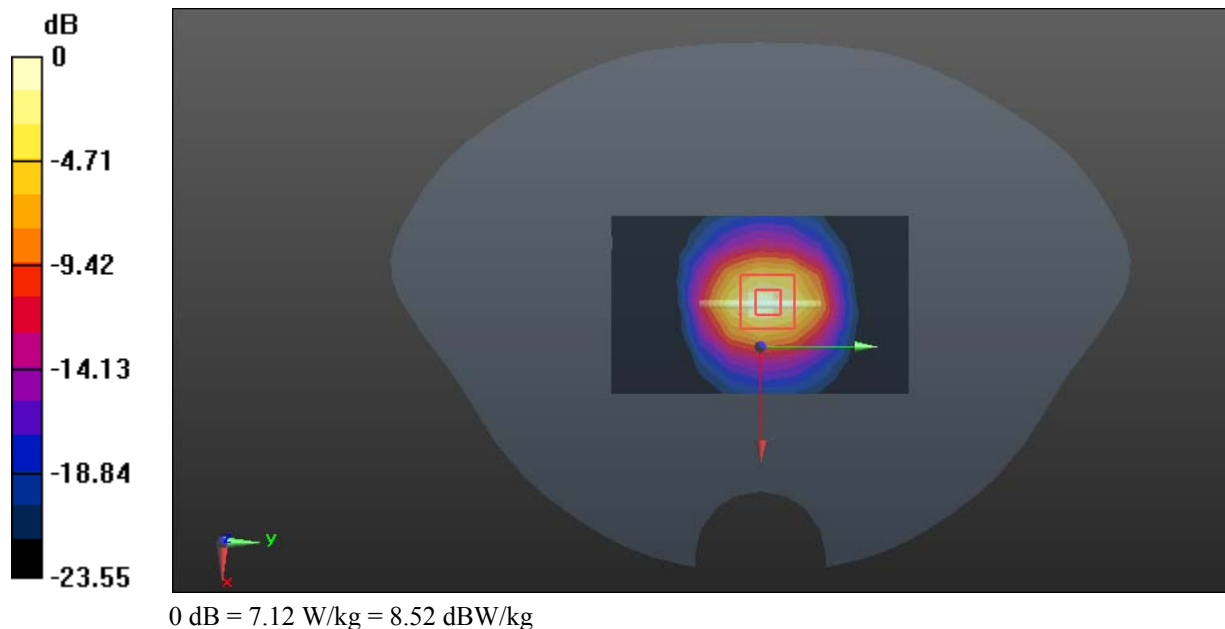
Peak SAR (extrapolated) = 11.6 W/kg

SAR(1 g) = 5.39 W/kg; SAR(10 g) = 2.40 W/kg

Smallest distance from peaks to all points 3 dB below = 9.4 mm

Ratio of SAR at M2 to SAR at M1 = 47.8%

Maximum value of SAR (measured) = 7.12 W/kg



System Performance 5250 MHz Head**DUT: D5GHzV2; Type: 5250 MHz; Serial: 1246**

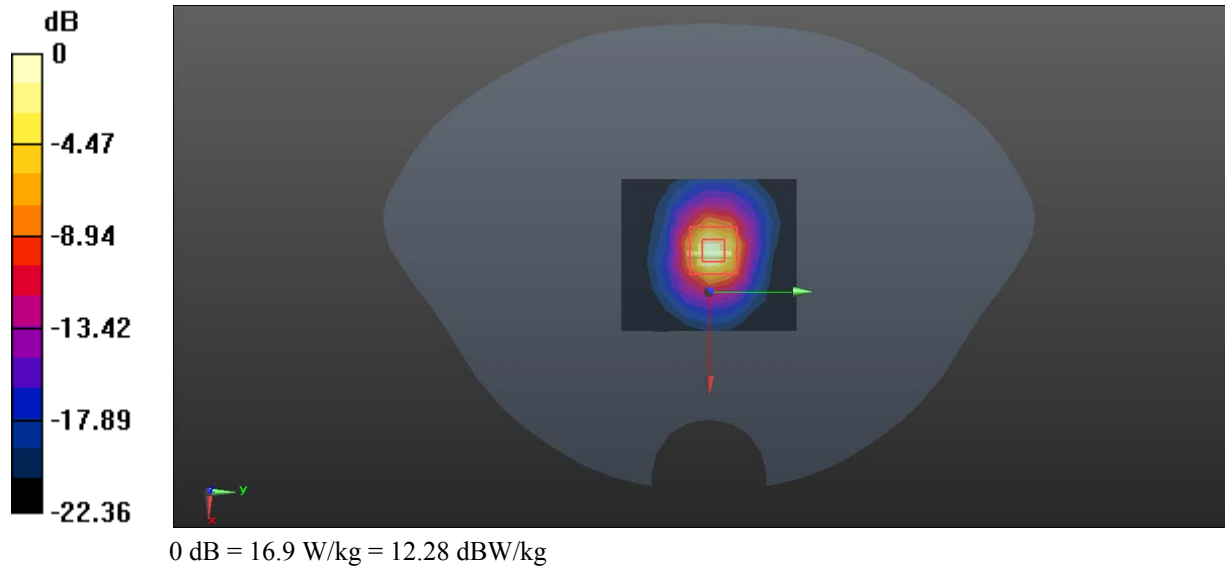
Communication System: CW (0); Frequency: 5250 MHz; Duty Cycle: 1:1
Medium parameters used: $f = 5250$ MHz; $\sigma = 4.623$ S/m; $\epsilon_r = 35.641$; $\rho = 1000$ kg/m³;
Phantom section: Flat Section

DASY5 Configuration:

- Probe: EX3DV4 - SN7329; ConvF(5.5, 5.5, 5.5) @ 5250 MHz; Calibrated: 2025/5/26
- Sensor-Surface: 1.4mm (Mechanical Surface Detection)
- Electronics: DAE4 Sn772; Calibrated: 2025/2/17
- Phantom: SAM (30deg probe tilt) with CRP v5.0_20150321; Type: QD000P40CD; Serial: TP:1874
- Measurement SW: DASY52, Version 52.10 (2); SEMCAD X Version 14.6.14 (7501)

Area Scan (8x9x1): Measurement grid: dx=10mm, dy=10mm
Maximum value of SAR (measured) = 15.6 W/kg

Zoom Scan (8x8x12)/Cube 0: Measurement grid: dx=4mm, dy=4mm, dz=2mm
Reference Value = 44.16 V/m; Power Drift = -0.10 dB
Peak SAR (extrapolated) = 29.4 W/kg
SAR(1 g) = 7.26 W/kg; SAR(10 g) = 2.08 W/kg
Smallest distance from peaks to all points 3 dB below = 7.4 mm
Ratio of SAR at M2 to SAR at M1 = 54.1%
Maximum value of SAR (measured) = 16.9 W/kg



System Performance 5600 MHz Head**DUT: D5GHzV2; Type: 5600 MHz; Serial: 1246**

Communication System: CW (0); Frequency: 5600 MHz; Duty Cycle: 1:1

Medium parameters used: $f = 5600$ MHz; $\sigma = 5.056$ S/m; $\epsilon_r = 34.737$; $\rho = 1000$ kg/m³;

Phantom section: Flat Section

DASY5 Configuration:

- Probe: EX3DV4 - SN7329; ConvF(4.9, 4.9, 4.9) @ 5600 MHz; Calibrated: 2025/5/26
- Sensor-Surface: 1.4mm (Mechanical Surface Detection)
- Electronics: DAE4 Sn772; Calibrated: 2025/2/17
- Phantom: SAM (30deg probe tilt) with CRP v5.0_20150321; Type: QD000P40CD; Serial: TP:1874
- Measurement SW: DASY52, Version 52.10 (2); SEMCAD X Version 14.6.14 (7501)

Area Scan (8x8x1): Measurement grid: dx=10mm, dy=10mm

Maximum value of SAR (measured) = 16.6 W/kg

Zoom Scan (8x8x12)/Cube 0: Measurement grid: dx=4mm, dy=4mm, dz=2mm

Reference Value = 37.08 V/m; Power Drift = 0.11 dB

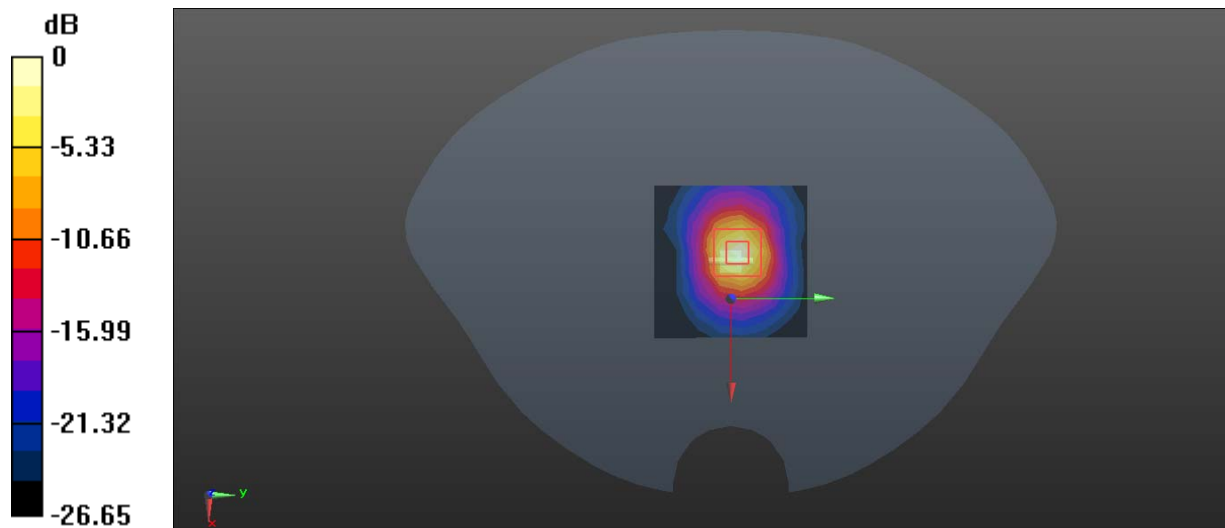
Peak SAR (extrapolated) = 29.7 W/kg

SAR(1 g) = 7.67 W/kg; SAR(10 g) = 2.19 W/kg

Smallest distance from peaks to all points 3 dB below = 6.2 mm

Ratio of SAR at M2 to SAR at M1 = 62.5%

Maximum value of SAR (measured) = 15.9 W/kg



0 dB = 15.9 W/kg = 12.01 dBW/kg

System Performance 5750 MHz Head**DUT: D5GHzV2; Type: 5750 MHz; Serial: 1246**

Communication System: CW (0); Frequency: 5750 MHz; Duty Cycle: 1:1

Medium parameters used: $f = 5750$ MHz; $\sigma = 5.215$ S/m; $\epsilon_r = 34.465$; $\rho = 1000$ kg/m³;

Phantom section: Flat Section

DASY5 Configuration:

- Probe: EX3DV4 - SN7329; ConvF(5.02, 5.02, 5.02) @ 5750 MHz; Calibrated: 2025/5/26
- Sensor-Surface: 1.4mm (Mechanical Surface Detection)
- Electronics: DAE4 Sn772; Calibrated: 2025/2/17
- Phantom: SAM (30deg probe tilt) with CRP v5.0_20150321; Type: QD000P40CD; Serial: TP:1874
- Measurement SW: DASY52, Version 52.10 (2); SEMCAD X Version 14.6.14 (7501)

Area Scan (8x9x1): Measurement grid: dx=10mm, dy=10mm

Maximum value of SAR (measured) = 17.5 W/kg

Zoom Scan (8x8x12)/Cube 0: Measurement grid: dx=4mm, dy=4mm, dz=2mm

Reference Value = 38.76 V/m; Power Drift = -0.14 dB

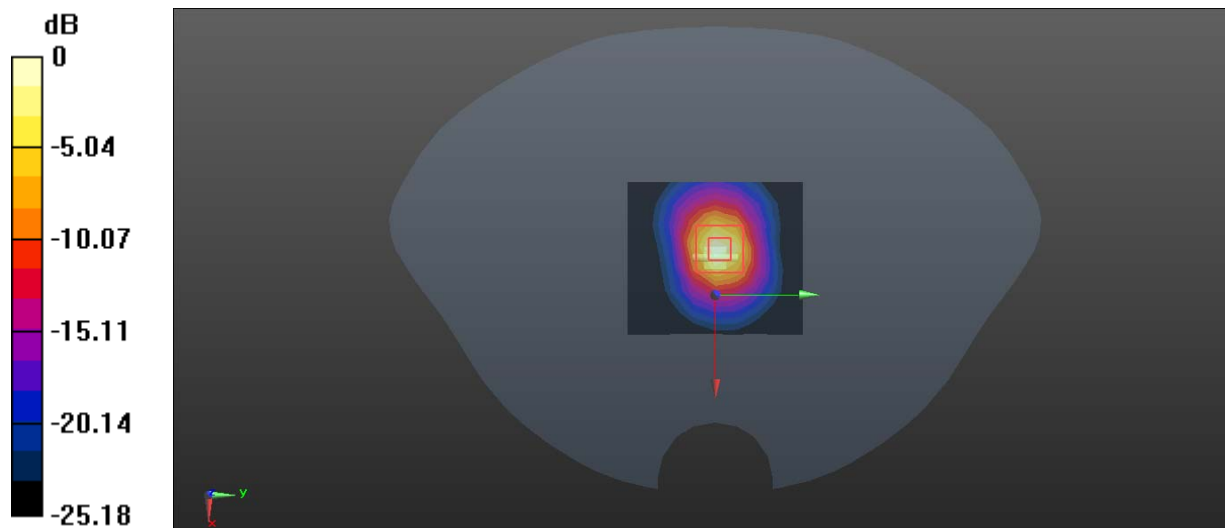
Peak SAR (extrapolated) = 29.4 W/kg

SAR(1 g) = 7.68 W/kg; SAR(10 g) = 2.29 W/kg

Smallest distance from peaks to all points 3 dB below = 7.6 mm

Ratio of SAR at M2 to SAR at M1 = 61.4%

Maximum value of SAR (measured) = 16.4 W/kg



0 dB = 16.4 W/kg = 12.15 dBW/kg

6. EUT TEST STRATEGY AND METHODOLOGY

6.1 Test positions for body-worn and other configurations

Body-worn operating configurations should be tested with the belt-clips and holsters attached to the device and positioned against a flat phantom in normal use configurations. Devices with a headset output should be tested with a headset connected to the device. When multiple accessories that do not contain metallic components are supplied with the device, the device may be tested with only the accessory that dictates the closest spacing to the body. When multiple accessories that contain metallic components are supplied with the device, the device must be tested with each accessory that contains a unique metallic component. If multiple accessories share an identical metallic component (e.g., the same metallic belt-clip used with different holsters with no other metallic components), only the accessory that dictates the closest spacing to the body must be tested.

Body-worn accessories may not always be supplied or available as options for some devices that are intended to be authorized for body-worn use. A separation distance of 1.5 cm between the back of the device and a flat phantom is recommended for testing body-worn SAR compliance under such circumstances. Other separation distances may be used, but they should not exceed 2.5 cm. In these cases, the device may use body-worn accessories that provide a separation distance greater than that tested for the device provided however that the accessory contains no metallic components.

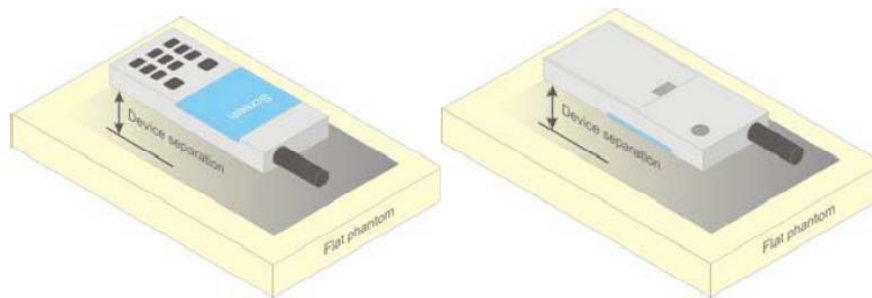


Figure 5 – Test positions for body-worn devices

6.2 Test Distance for SAR Evaluation

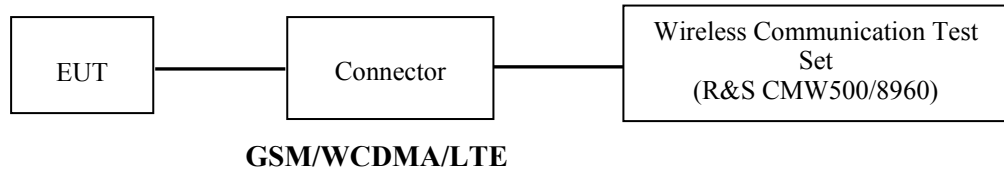
For Body mode(1g Body SAR) the EUT(Equipment Under Test) is set 10mm away from the phantom, the test distance is 10mm;

For Limb mode(10g Extremity SAR) the EUT is set 0mm away from the phantom, the test distance is 0mm.

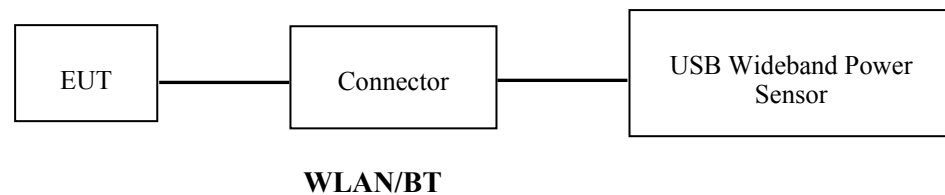
7. CONDUCTED OUTPUT POWER MEASUREMENT

7.1 Test Procedure

The RF output of the transmitter was connected to the input of the Wireless Communication Test Set through Connector.



The RF output of the transmitter was connected to the input port of the USB Wideband Power Sensor through Connector.



7.2 Radio Configuration

The power measurement was configured by the Wireless Communication Test Set.

GPRS/EGPRS

Function: Menu select > GSM Mobile Station > GSM 850/1900

Press Connection control to choose the different menus

Press RESET > choose all the reset all settings

Connection Press Signal Off to turn off the signal and change settings

Network Support > GSM + GPRS or GSM + EGSM

Main Service > Packet Data

Service selection > Test Mode A – Auto Slot Config. off

MS Signal Press Slot Config Bottom on the right twice to select and change the number of time slots and power setting

> Slot configuration > Uplink/Gamma

> 33 dBm for GPRS 850

> 30 dBm for GPRS 1900

> 27 dBm for EGPRS 850

> 26 dBm for EGPRS 1900

BS Signal Enter the same channel number for TCH channel (test channel) and BCCH channel

Frequency Offset > + 0 Hz

Mode > BCCH and TCH

BCCH Level > -85 dBm (May need to adjust if link is not stable)

BCCH Channel > choose desire test channel [Enter the same channel number for TCH channel (test channel) and BCCH channel]

Channel Type > Off

P0 > 4 dB

Slot Config > Unchanged (if already set under MS signal)

TCH > choose desired test channel

Hopping > Off

Main Timeslot > 3

Network Coding Scheme > CS4 (GPRS) and MCS5 (EGPRS)

Bit Stream > 2E9-1 PSR Bit Stream

AF/RF Enter appropriate offsets for Ext. Att. Output and Ext. Att. Input

Connection Press Signal on to turn on the signal and change settings

WCDMA Release 99

The following tests were conducted according to the test requirements outlines in section 5.2 of the 3GPP

TS34.121-1 specification. The EUT has a nominal maximum output power of 24dBm (+1.7/-3.7).

WCDMA General Settings	Loopback Mode	Test Mode 1
	Rel99 RMC	12.2kbps RMC
	Power Control Algorithm	Algorithm2
	β_c/β_d	8/15

HSDPA

The following tests were conducted according to the test requirements outlines in section 5.2 of the 3GPP

TS34.121-1 specification.

	Mode	HSDPA	HSDPA	HSDPA	HSDPA
	Subset	1	2	3	4
WCDMA General Settings	Loopback Mode	Test Mode 1			
	Rel99 RMC	12.2kbps RMC			
	HSDPA FRC	H-Set1			
	Power Control Algorithm	Algorithm2			
	β_c	2/15	12/15	15/15	15/15
	β_d	15/15	15/15	8/15	4/15
	$\beta_d(\text{SF})$	64			
	β_c/β_d	2/15	12/15	15/8	15/4
	β_{hs}	4/15	24/15	30/15	30/15
	MPR(dB)	0	0	0.5	0.5
HSDPA Specific Settings	DACK	8			
	DNAK	8			
	DCQI	8			
	Ack-Nack repetition factor	3			
	CQI Feedback	4ms			
	CQI Repetition Factor	2			
	$A_{hs}=\beta_{hs}/\beta_c$	30/15			

HSUPA

The following tests were conducted according to the test requirements outlines in section 5.2 of the 3GPP TS34.121-1 specification.

	Mode	HSUPA	HSUPA	HSUPA	HSUPA	HSUPA
	Subset	1	2	3	4	5
WCDMA General Settings	Loopback Mode	Test Mode 1				
	Rel99 RMC	12.2kbps RMC				
	HSDPA FRC	H-Set1				
	HSUPA Test	HSUPA Loopback				
	Power Control Algorithm	Algorithm2				
	β_c	11/15	6/15	15/15	2/15	15/15
	β_d	15/15	15/15	9/15	15/15	0
	β_{ec}	209/225	12/15	30/15	2/15	5/15
	β_c/β_d	11/15	6/15	15/9	2/15	-
	β_{hs}	22/15	12/15	30/15	4/15	5/15
	CM(dB)	1.0	3.0	2.0	3.0	1.0
	MPR(dB)	0	2	1	2	0
HSDPA Specific Settings	DACK	8				
	DNAK	8				
	DCQI	8				
	Ack-Nack repetition factor	3				
	CQI Feedback	4ms				
	CQI Repetition Factor	2				
	$A_{hs}=\beta_{hs}/\beta_c$	30/15				
HSUPA Specific Settings	DE-DPCCH	6	8	8	5	7
	DHARQ	0	0	0	0	0
	AG Index	20	12	15	17	21
	ETFCI	75	67	92	71	81
	Associated Max UL Data Rate kbps	242.1	174.9	482.8	205.8	308.9
	Reference E_FCI's	E-TFCI 11 E E-TFCI PO 4 E-TFCI 67 E-TFCI PO 18 E-TFCI 71 E-TFCI PO23 E-TFCI 75 E-TFCI PO26 E-TFCI 81 E-TFCI PO 27		E-TFCI 11 E-TFCI PO4 E-TFCI 92 E-TFCI PO 18		E-TFCI 11 E E-TFCI PO 4 E-TFCI 67 E-TFCI PO 18 E-TFCI 71 E-TFCI PO23 E-TFCI 75 E-TFCI PO26 E-TFCI 81 E-TFCI PO 27

HSPA+

Sub-test	β_c (Note3)	β_d	β_{HS} (Note1)	β_{ec}	β_{ed} (2xSF2) (Note 4)	β_{ed} (2xSF4) (Note 4)	CM (dB) (Note 2)	MPR (dB) (Note 2)	AG Index (Note 4)	E-TFCI (Note 5)	E-TFCI (boost)
1	1	0	30/15	30/15	β_{ed1} : 30/15 β_{ed2} : 30/15	β_{ed3} : 24/15 β_{ed4} : 24/15	3.5	2.5	14	105	105

Note 1: Δ_{ACK} , Δ_{NACK} and $\Delta_{CQI} = 30/15$ with $\beta_{hs} = 30/15 * \beta_c$.

Note 2: CM = 3.5 and the MPR is based on the relative CM difference, MPR = MAX(CM-1,0).

Note 3: DPDCH is not configured, therefore the β_c is set to 1 and $\beta_d = 0$ by default.

Note 4: β_{ed} can not be set directly; it is set by Absolute Grant Value.

Note 5: All the sub-tests require the UE to transmit 2SF2+2SF4 16QAM EDCH and they apply for UE using E-DPDCH category 7. E-DCH TTI is set to 2ms TTI and E-DCH table index = 2. To support these E-DCH configurations DPDCH is not allocated. The UE is signalled to use the extrapolation algorithm.

The following tests were conducted according to the test requirements in Table C.11.1.4 of 3GPP TS 34.121-1

FDD-LTE

For UE Power Class 1 and 3, the allowed Maximum Power Reduction (MPR) for the maximum output power in Table 6.2.2-1 due to higher order modulation and transmit bandwidth configuration (resource blocks) is specified in Table 6.2.3-1.

Table 6.2.3-1: Maximum Power Reduction (MPR) for Power Class 1 and 3

Modulation	Channel bandwidth / Transmission bandwidth (N_{RB})						MPR (dB)
	1.4 MHz	3.0 MHz	5 MHz	10 MHz	15 MHz	20 MHz	
QPSK	> 5	> 4	> 8	> 12	> 16	> 18	≤ 1
16 QAM	≤ 5	≤ 4	≤ 8	≤ 12	≤ 16	≤ 18	≤ 1
16 QAM	> 5	> 4	> 8	> 12	> 16	> 18	≤ 2

For UE Power Class 1 and 3 the specific requirements and identified sub clauses are specified in Table 6.2.4-1 along with the allowed A-MPR values that may be used to meet these requirements. The allowed A-MPR values specified below in Table 6.2.4.-1 to 6.2.4-15 are in addition to the allowed MPR requirements specified in sub clause 6.2.3.

Table 6.2.4-1: Additional Maximum Power Reduction (A-MPR)

Network Signalling value	Requirements (subclause)	E-UTRA Band	Channel bandwidth (MHz)	Resources Blocks (N_{RB})	A-MPR (dB)
NS_01	6.6.2.1.1	Table 5.5-1	1.4, 3, 5, 10, 15, 20	Table 5.6-1	N/A
NS_03	6.6.2.2.1	2, 4, 10, 23, 25, 35, 36	3	>5	≤ 1
			5	>6	≤ 1
			10	>6	≤ 1
			15	>8	≤ 1
			20	>10	≤ 1
NS_04	6.6.2.2.2	41	5	>6	≤ 1
			10, 15, 20	Table 6.2.4-4	
NS_05	6.6.3.3.1	1	10, 15, 20	≥ 50	≤ 1
NS_06	6.6.2.2.3	12, 13, 14, 17	1.4, 3, 5, 10	Table 5.6-1	N/A
NS_07	6.6.2.2.3 6.6.3.3.2	13	10	Table 6.2.4-2	
NS_08	6.6.3.3.3	19	10, 15	> 44	≤ 3
NS_09	6.6.3.3.4	21	10, 15	> 40	≤ 1
				> 55	≤ 2
NS_10		20	15, 20	Table 6.2.4-3	
NS_11	6.6.2.2.1	23	1.4, 3, 5, 10, 15, 20	Table 6.2.4-5	
NS_12	6.6.3.3.5	26	1.4, 3, 5	Table 6.2.4-6	
NS_13	6.6.3.3.6	26	5	Table 6.2.4-7	
NS_14	6.6.3.3.7	26	10, 15	Table 6.2.4-8	
NS_15	6.6.3.3.8	26	1.4, 3, 5, 10, 15	Table 6.2.4-9 Table 6.2.4-10	
NS_16	6.6.3.3.9	27	3, 5, 10	Table 6.2.4-11, Table 6.2.4-12, Table 6.2.4-13	
NS_17	6.6.3.3.10	28	5, 10	Table 5.6-1	N/A
NS_18	6.6.3.3.11	28	5	≥ 2	≤ 1
			10, 15, 20	≥ 1	≤ 4
NS_19	6.6.3.3.12	44	10, 15, 20	Table 6.2.4-14	
NS_20	6.2.2	23	5, 10, 15, 20	Table 6.2.4-15	
	6.6.2.2.1				
	6.6.3.2				
...					
NS_32	-	-	-	-	-

TDD-LTE

LTE TDD Band 41 supports 3GPP TS 36.211 section 4.2 for Type 2 Frame Structure and Table 4.2-2 for uplink-downlink configurations and Table 4.2-1 for Special subframe configurations.

Table 4.2-1: Configuration of special subframe (lengths of DwPTS/GP/UpPTS).

Special subframe configuration	Normal cyclic prefix in downlink			Extended cyclic prefix in downlink		
	DwPTS	UpPTS		DwPTS	UpPTS	
		Normal cyclic prefix in uplink	Extended cyclic prefix in uplink		Normal cyclic prefix in uplink	Extended cyclic prefix in uplink
0	$6592 \cdot T_s$	$2192 \cdot T_s$	$2560 \cdot T_s$	$7680 \cdot T_s$	$2192 \cdot T_s$	$2560 \cdot T_s$
1	$19760 \cdot T_s$			$20480 \cdot T_s$		
2	$21952 \cdot T_s$			$23040 \cdot T_s$		
3	$24144 \cdot T_s$			$25600 \cdot T_s$		
4	$26336 \cdot T_s$			$7680 \cdot T_s$		
5	$6592 \cdot T_s$	$4384 \cdot T_s$	$5120 \cdot T_s$	$20480 \cdot T_s$	$4384 \cdot T_s$	$5120 \cdot T_s$
6	$19760 \cdot T_s$			$23040 \cdot T_s$		
7	$21952 \cdot T_s$			$12800 \cdot T_s$		
8	$24144 \cdot T_s$			-	-	-
9	$13168 \cdot T_s$			-	-	-

Table 4.2-2: Uplink-downlink configurations.

Uplink-downlink configuration	Downlink-to-Uplink Switch-point periodicity	Subframe number									
		0	1	2	3	4	5	6	7	8	9
0	5 ms	D	S	U	U	U	D	S	U	U	U
1	5 ms	D	S	U	U	D	D	S	U	U	D
2	5 ms	D	S	U	D	D	D	S	U	D	D
3	10 ms	D	S	U	U	U	D	D	D	D	D
4	10 ms	D	S	U	U	D	D	D	D	D	D
5	10 ms	D	S	U	D	D	D	D	D	D	D
6	5 ms	D	S	U	U	U	D	S	U	U	D

Calculated Duty Cycle

Uplink-Downlink Configuration	Downlink-to-Uplink Switch-point Periodicity	Subframe Number										Calculated Duty Cycle (%)
		0	1	2	3	4	5	6	7	8	9	
0	5 ms	D	S	U	U	U	D	S	U	U	U	63.33
1	5 ms	D	S	U	U	D	D	S	U	U	D	43.33
2	5 ms	D	S	U	D	D	D	S	U	D	D	23.33
3	10 ms	D	S	U	U	U	D	D	D	D	D	31.67
4	10 ms	D	S	U	U	D	D	D	D	D	D	21.67
5	10 ms	D	S	U	D	D	D	D	D	D	D	11.67
6	5 ms	D	S	U	U	U	D	S	U	U	D	53.33

We used configuration 0 for LTE Band 38 SAR test, that is 63.33%(1:1.58)for duty cycle.

7.3 Maximum Target Output Power

Mode/Band	Max Target Power(dBm)			
	Channel			
	Low	Middle	High	Additional
GPRS 850 1 TX Slot	33	33	33	/
GPRS 850 2 TX Slot	32	32	32	/
GPRS 850 3 TX Slot	30	30	30	/
GPRS 850 4 TX Slot	28.5	28.5	28.5	/
EDGE 850 1 TX Slot	28	28	28	/
EDGE 850 2 TX Slot	27	27	27	/
EDGE 850 3 TX Slot	25	25	25	/
EDGE 850 4 TX Slot	23	23	23	/
GPRS 1900 1 TX Slot	29	29	29	/
GPRS 1900 2 TX Slot	28	28	28	/
GPRS 1900 3 TX Slot	26	26	26	/
GPRS 1900 4 TX Slot	25	25	25	/
EDGE 1900 1 TX Slot	26.5	26.5	26.5	/
EDGE 1900 2 TX Slot	25	25	25	/
EDGE 1900 3 TX Slot	23	23	23	/
EDGE 1900 4 TX Slot	22	22	22	/
WCDMA Band 2	23	23	23	/
HSDPA	21	21	21	/
HSUPA	21.5	21.5	21.5	/
HSPA+	21	21	21	/
WCDMA Band 5	23	23	23	/
HSDPA	21	21	21	/
HSUPA	21.5	21.5	21.5	/
HSPA+	21	21	21	/
LTE Band 2 1RB	23	23	23	/
LTE Band 2 50%RB	21.5	21.5	21.5	/
LTE Band 2 100%RB	21.5	21.5	21.5	/
LTE Band 4 1RB	23	23	23	/
LTE Band 4 50%RB	21.5	21.5	21.5	/
LTE Band 4 100%RB	21.5	21.5	21.5	/
LTE Band 5 1RB	23.5	23.5	23.5	/
LTE Band 5 50%RB	22.5	22.5	22.5	/
LTE Band 5 100%RB	22.5	22.5	22.5	/
LTE Band 7 1RB	22.5	22.5	22.5	/
LTE Band 7 50%RB	21	21	21	/
LTE Band 7 100%RB	21	21	21	/
LTE Band 38 1RB	23	23	23	/
LTE Band 38 50%RB	22	22	22	/
LTE Band 38 100%RB	22	22	22	/
WLAN 2.4G(802.11b)	18	18	18	/
WLAN 2.4G(802.11g)	17	17	17	/
WLAN 2.4G(802.11n ht20)	14	14	14	/
WLAN 2.4G(802.11n ht40)	12.5	12.5	12.5	/
WLAN 5.2G(802.11a)	14	14	14	/

Max Target Power(dBm)				
Mode/Band	Channel			
	Low	Middle	High	Additional
WLAN 5.2G(802.11n20)	13.9	13.9	13.9	/
WLAN 5.2G(802.11n40)	10	/	10	/
WLAN 5.2G(802.11ac80)	/	10	/	/
WLAN 5.3G(802.11a)	14	14	14	/
WLAN 5.3G(802.11n20)	13.9	13.9	13.9	/
WLAN 5.3G(802.11n40)	10	/	10	/
WLAN 5.3G(802.11ac80)	/	10	/	/
WLAN 5.6G(802.11a)	13.4	13.4	13.4	13.4
WLAN 5.6G(802.11n20)	13.5	13.5	13.5	13.5
WLAN 5.6G(802.11n40)	11.5	11.5	11.5	11.5
WLAN 5.6G(802.11ac80)	10	/	10.5	10
WLAN 5.8G(802.11a)	13.4	13.4	13.4	/
WLAN 5.8G(802.11n20)	13.5	13.5	13.5	/
WLAN 5.8G(802.11n40)	13.4	/	13.4	/
WLAN 5.8G(802.11ac80)	/	13.4	/	/
BT BDR(GFSK)	2	2	2	3
BT EDR($\pi/4$ -DQPSK)	2	2	2	2
BT EDR(8DPSK)	2	2	2	3
BLE 1Mbps	3.5	3.5	3	/

Note: The Maximum Target Power for LTE bands corresponds to their maximum power in QPSK modes with maximum bandwidth.

7.4 Test Results:**GPRS:**

Band	Channel No.	Frequency (MHz)	RF Output Power (dBm)			
			1 slot	2 slots	3 slots	4 slots
GSM 850	128	824.2	32.60	31.46	29.37	28.23
	190	836.6	32.79	31.65	29.54	28.27
	251	848.8	32.64	31.61	29.44	27.97
PCS 1900	512	1850.2	28.53	27.60	25.52	24.27
	661	1880	28.69	27.68	25.69	24.37
	810	1909.8	28.60	27.51	25.44	24.16

EDGE:

Band	Channel No.	Frequency (MHz)	RF Output Power (dBm)			
			1 slot	2 slots	3 slots	4 slots
GSM 850	128	824.2	27.30	26.14	24.02	22.89
	190	836.6	27.35	26.16	24.05	22.94
	251	848.8	27.31	26.15	24.19	22.93
PCS 1900	512	1850.2	25.79	24.68	22.59	21.39
	661	1880	25.99	24.98	22.85	21.69
	810	1909.8	26.05	24.85	22.62	21.59

For SAR, the time based average power is relevant, the difference in between depends on the duty cycle of the TDMA signal.

Number of Time slot	1	2	3	4
Duty Cycle	1:8	1:4	1:2.66	1:2
Time based Ave. power compared to slotted Ave. power	-9 dB	-6 dB	-4.25 dB	-3 dB
Crest Factor	8	4	2.66	2

The time based average power for GPRS

Band	Channel No.	Frequency (MHz)	RF Output Power (dBm)			
			1 slot	2 slots	3 slots	4 slots
GSM 850	128	824.2	23.6	25.46	25.12	25.23
	190	836.6	23.79	25.65	25.29	25.27
	251	848.8	23.64	25.61	25.19	24.97
PCS 1900	512	1850.2	19.53	21.6	21.27	21.27
	661	1880	19.69	21.68	21.44	21.37
	810	1909.8	19.6	21.51	21.19	21.16

The time based average power for EDGE

Band	Channel No.	Frequency (MHz)	RF Output Power (dBm)			
			1 slot	2 slots	3 slots	4 slots
GSM 850	128	824.2	18.3	20.14	19.77	19.89
	190	836.6	18.35	20.16	19.8	19.94
	251	848.8	18.31	20.15	19.94	19.93
PCS 1900	512	1850.2	16.79	18.68	18.34	18.39
	661	1880	16.99	18.98	18.6	18.69
	810	1909.8	17.05	18.85	18.37	18.59

Note:

1. Agilent Technologies Communication Tester (8960) was used for the measurement of GSM peak and average output power for active timeslots.
2. For GPRS, 1, 2, 3 and 4 timeslots has been activated separately with power level 3(850 MHz band) and 3(1900 MHz band).
3. For EGPRS, 1, 2, 3 and 4 timeslots has been activated separately with power level 6(850 MHz band) and 5(1900 MHz band).
4. According to KDB 941225 D01-SAR for EGPRS mode are not required when the source-based time-averaged output power for data mode is lower than that in the normal GPRS mode.

WCDMA:**WCDMA Band 2:**

Test Mode	Conducted Average Output Power(dBm)		
	Lowest Channel	Middle Channel	Highest Channel
WCDMA	22.52	22.74	22.72
HSDPA Subset 1	20.57	20.79	20.88
HSDPA Subset 2	20.59	20.73	20.69
HSDPA Subset 3	20.66	20.57	20.65
HSDPA Subset 4	20.58	20.66	20.75
HSUPA Subset 1	21.16	21.10	21.09
HSUPA Subset 2	21.06	20.99	21.18
HSUPA Subset 3	21.18	21.12	21.08
HSUPA Subset 4	21.11	21.08	21.09
HSUPA Subset 5	21.24	21.16	21.13
HSPA+	20.81	20.79	20.85

WCDMA Band 5:

Test Mode	Conducted Average Output Power(dBm)		
	Lowest Channel	Middle Channel	Highest Channel
WCDMA	22.68	22.53	22.19
HSDPA Subset 1	20.40	20.44	20.16
HSDPA Subset 2	20.67	20.62	20.35
HSDPA Subset 3	20.75	20.43	20.25
HSDPA Subset 4	20.70	20.19	20.14
HSUPA Subset 1	20.93	20.68	20.58
HSUPA Subset 2	21.00	20.75	20.63
HSUPA Subset 3	20.92	20.70	20.46
HSUPA Subset 4	20.97	20.83	20.46
HSUPA Subset 5	21.02	20.85	20.46
HSPA+	20.84	20.85	20.69

Note:

1. The default test configuration is to measure SAR with an established radio link between the EUT and a communication test set using a 12.2 kbps RMC (reference measurement Channel) Configured in All 1.
2. KDB 941225 D01-Body SAR is not required for HSDPA/HSUPA/HSPA+ when the maximum average output of each RF channel is less than ¼ dB higher than measured 12.2kbps RMC or the maximum SAR for 12.2kbps RMC is < 75% of SAR limit.

LTE Band 2:

Test Bandwidth	Test Modulation	Resource Block & RB offset	Low Channel (dBm)	Middle Channel (dBm)	High Channel (dBm)
1.4M	QPSK	1@0	22.28	22.14	21.66
		1@3	22.44	22.37	21.95
		1@5	22.27	22.1	21.7
		3@0	22.37	22.24	21.97
		3@1	22.43	22.24	22.02
		3@3	22.43	22.1	21.93
		6@0	21.44	21.07	21.04
	16-QAM	1@0	21.18	21.39	20.65
		1@3	21.34	21.68	20.89
		1@5	21.12	21.35	20.68
		3@0	21.53	21.41	21.17
		3@1	21.67	21.38	21.15
		3@3	21.53	21.5	21.04
		6@0	20.52	20.12	20.13
3M	QPSK	1@0	22.22	22.26	21.89
		1@8	22.24	22.31	21.95
		1@14	22.39	22.18	21.86
		8@0	21.34	21.16	21.03
		8@4	21.44	21.22	21.06
		8@7	21.39	21.2	21.08
		15@0	21.38	21.09	20.99
	16-QAM	1@0	21.36	21.5	20.84
		1@8	21.23	21.58	20.81
		1@14	21.25	21.56	20.74
		8@0	20.4	20.28	20.05
		8@4	20.57	20.25	20.15
		8@7	20.34	20.2	20.05
		15@0	20.39	20.13	20.1
5M	QPSK	1@0	22.26	22.12	21.83
		1@12	22.39	22.36	22.18
		1@24	22.12	21.99	21.74
		12@0	21.43	21.2	20.9
		12@7	21.45	21.23	21.2
		12@13	21.41	21.05	20.9
		25@0	21.42	21.19	20.93
	16-QAM	1@0	21.25	21.02	21.38
		1@12	21.5	21.27	21.67
		1@24	21.36	21.09	21.51
		12@0	20.43	20.24	20.09
		12@7	20.65	20.29	20.24
		12@13	20.47	20.21	20.16
		25@0	20.51	20.19	20.15

Test Bandwidth	Test Modulation	Resource Block & RB offset	Low Channel (dBm)	Middle Channel (dBm)	High Channel (dBm)
10M	QPSK	1@0	22.36	22.1	22.07
		1@25	22.32	22.25	22.31
		1@49	22.11	22.08	22.15
		25@0	21.42	21.31	21.13
		25@12	21.39	21.31	21.03
		25@25	21.44	21.1	21
		50@0	21.46	21.23	21.14
	16-QAM	1@0	21.1	21.14	21.34
		1@25	21.31	21.19	21.41
		1@49	21.18	21.02	21.31
		25@0	20.63	20.41	20.29
		25@12	20.56	20.25	20.17
		25@25	20.58	20.25	20.09
		50@0	20.52	20.24	20
15M	QPSK	1@0	22.76	22.24	21.91
		1@37	22.92	22.51	22.3
		1@74	22.56	22.07	21.89
		36@0	21.99	21.28	21.08
		36@20	21.88	21.28	21.12
		36@39	21.89	21.11	21.09
		75@0	21.44	21.29	21
	16-QAM	1@0	21.22	21.46	20.93
		1@37	21.41	21.67	21.1
		1@74	21.25	21.41	20.85
		36@0	20.43	20.24	20.02
		36@20	20.49	20.12	19.98
		36@39	20.39	20.28	19.86
		75@0	20.4	20.19	19.92
20M	QPSK	1@0	21.92	21.89	21.76
		1@49	22.45	22.18	22.09
		1@99	21.81	21.89	21.65
		50@0	21.39	21.28	20.91
		50@24	21.33	21.19	21
		50@50	21.42	21.01	20.68
		100@0	21.35	21.22	20.89
	16-QAM	1@0	21.46	21.5	21.14
		1@49	21.69	21.85	21.19
		1@99	21.17	21.45	21.06
		50@0	20.43	20.22	20.03
		50@24	20.34	20.21	20.12
		50@50	20.31	20.08	19.74
		100@0	20.49	20.1	19.96

LTE Band 4:

Test Bandwidth	Test Modulation	Resource Block & RB offset	Low Channel (dBm)	Middle Channel (dBm)	High Channel (dBm)
1.4M	QPSK	1@0	21.77	22.05	22.39
		1@3	22.01	22.07	22.49
		1@5	21.81	22.01	22.41
		3@0	21.93	22.23	22.45
		3@1	22.04	22.23	22.45
		3@3	21.95	22.24	22.38
		6@0	21.1	21.16	21.31
	16-QAM	1@0	20.7	20.86	21.65
		1@3	20.79	21.05	21.66
		1@5	20.78	20.93	21.63
		3@0	21.18	21.32	21.62
		3@1	21.24	21.43	21.67
		3@3	21.14	21.26	21.59
		6@0	20.12	20.36	20.25
3M	QPSK	1@0	21.91	22.08	22.53
		1@8	21.96	22.08	22.53
		1@14	21.84	22.06	22.51
		8@0	21.09	21.27	21.39
		8@4	21.17	21.23	21.4
		8@7	21.11	21.16	21.39
		15@0	21.13	21.2	21.3
	16-QAM	1@0	20.88	21.2	21.63
		1@8	20.75	21.07	21.61
		1@14	20.71	21.08	21.74
		8@0	20.09	20.22	20.46
		8@4	20	20.29	20.47
		8@7	20.11	20.29	20.32
		15@0	19.95	20.27	20.36
5M	QPSK	1@0	21.99	21.97	22.07
		1@12	22.05	22.24	22.44
		1@24	21.91	22.06	22.15
		12@0	21	21.18	21.31
		12@7	21.03	21.17	21.25
		12@13	21.02	21.21	21.23
		25@0	21.07	21.14	21.4
	16-QAM	1@0	20.89	21.5	21.16
		1@12	21.09	21.91	21.29
		1@24	20.95	21.57	21.21
		12@0	20.09	20.17	20.27
		12@7	20.12	20.27	20.38
		12@13	20.08	20.14	20.29
		25@0	20.01	20.14	20.28

Test Bandwidth	Test Modulation	Resource Block & RB offset	Low Channel (dBm)	Middle Channel (dBm)	High Channel (dBm)
10M	QPSK	1@0	21.73	22.07	22.37
		1@25	22.01	22.16	22.6
		1@49	21.81	22.09	22.32
		25@0	20.98	21.21	21.34
		25@12	21.03	21.12	21.32
		25@25	21.06	21.24	21.38
		50@0	20.99	21.13	21.42
	16-QAM	1@0	20.74	20.99	21.66
		1@25	20.92	21.28	21.79
		1@49	20.68	20.95	21.58
		25@0	20.06	20.2	20.35
		25@12	20.07	20.24	20.39
		25@25	20.31	20.18	20.46
		50@0	20.15	20.25	20.44
15M	QPSK	1@0	21.92	21.87	22.19
		1@37	22.17	22.25	22.65
		1@74	22.05	22.05	22.46
		36@0	20.95	21.28	21.4
		36@20	21.15	21.26	21.48
		36@39	21.15	21.13	21.42
		75@0	21.19	21.29	21.32
	16-QAM	1@0	20.83	20.96	21.47
		1@37	21.28	21.25	21.77
		1@74	21.09	20.99	21.47
		36@0	20.02	20.09	20.31
		36@20	20.18	20.22	20.39
		36@39	20.02	20.24	20.44
		75@0	20.14	20.2	20.31
20M	QPSK	1@0	21.75	21.66	21.77
		1@49	22.07	22.16	22.28
		1@99	21.88	21.81	21.87
		50@0	20.92	21.17	21.27
		50@24	21.1	21.24	21.26
		50@50	21.11	21.16	21.16
		100@0	21.14	21.19	21.26
	16-QAM	1@0	21.31	21.21	21.25
		1@49	21.85	21.49	21.52
		1@99	21.56	21.35	21.31
		50@0	20.02	20.24	20.28
		50@24	20.13	20.26	20.28
		50@50	20.17	20.2	20.28
		100@0	20.21	20.29	20.25

LTE Band 5:

Test Bandwidth	Test Modulation	Resource Block & RB offset	Low Channel (dBm)	Middle Channel (dBm)	High Channel (dBm)
1.4M	QPSK	1@0	22.94	22.8	22.89
		1@3	23.2	22.78	22.96
		1@5	22.92	22.63	22.81
		3@0	23.13	22.91	22.84
		3@1	23.14	22.86	22.81
		3@3	23.13	22.76	22.74
	16-QAM	6@0	21.97	21.89	21.73
		1@0	21.88	21.45	21.87
		1@3	21.91	21.68	22.03
		1@5	21.84	21.63	21.93
		3@0	22.2	21.8	21.93
		3@1	22.25	21.9	21.9
		3@3	22.35	21.84	21.85
		6@0	21.34	20.97	20.61
3M	QPSK	1@0	23	22.83	22.95
		1@8	22.9	22.77	22.86
		1@14	22.87	22.77	22.88
		8@0	22.06	21.8	21.85
		8@4	22.19	21.87	21.82
		8@7	22.03	21.73	21.85
		15@0	22.04	21.77	21.68
	16-QAM	1@0	21.97	21.79	22.07
		1@8	21.85	21.6	22.01
		1@14	21.78	21.76	22
		8@0	21.06	20.9	20.88
		8@4	21.08	20.93	20.93
		8@7	20.96	20.8	20.77
		15@0	21.16	20.8	20.76
5M	QPSK	1@0	22.92	22.86	22.54
		1@12	23.27	23.05	22.83
		1@24	22.85	22.77	22.63
		12@0	22.1	21.91	21.69
		12@7	22.11	21.84	21.9
		12@13	22.05	21.85	21.8
		25@0	22.11	21.87	21.68
	16-QAM	1@0	21.99	21.69	22.21
		1@12	22.26	21.93	22.5
		1@24	21.95	21.66	22.12
		12@0	21.24	21	20.8
		12@7	21.16	20.99	20.9
		12@13	21.09	20.91	20.83
		25@0	21.11	20.93	20.83

Test Bandwidth	Test Modulation	Resource Block & RB offset	Low Channel (dBm)	Middle Channel (dBm)	High Channel (dBm)
10M	QPSK	1@0	23.15	22.93	23
		1@25	23.01	23.05	23.08
		1@49	22.8	22.9	23.04
		25@0	22.25	21.89	21.98
		25@12	22.05	22.04	21.77
		25@25	22.07	21.95	21.88
		50@0	22.12	21.92	21.95
	16-QAM	1@0	21.99	21.87	22.33
		1@25	21.93	21.8	22.44
		1@49	21.7	21.85	21.97
		25@0	21.39	20.99	20.96
		25@12	21.18	21.11	20.9
		25@25	21.17	20.88	20.93
		50@0	21.15	20.85	20.91

LTE Band 7:

Test Bandwidth	Test Modulation	Resource Block & RB offset	Low Channel (dBm)	Middle Channel (dBm)	High Channel (dBm)
5M	QPSK	1@0	21.63	21.56	21.69
		1@12	21.86	21.91	22.04
		1@24	21.44	21.67	21.63
		12@0	20.72	20.71	20.87
		12@7	20.66	20.71	20.97
		12@13	20.72	20.84	20.89
		25@0	20.7	20.66	20.78
	16-QAM	1@0	21.22	20.45	20.68
		1@12	21.43	20.81	21
		1@24	21.24	20.51	20.67
		12@0	19.7	19.75	19.76
		12@7	19.9	19.9	19.92
		12@13	19.71	19.82	19.82
		25@0	19.85	19.73	19.81
10M	QPSK	1@0	21.51	21.76	22.08
		1@25	21.7	21.88	22.15
		1@49	21.64	21.77	21.95
		25@0	20.64	20.89	20.85
		25@12	20.76	20.76	20.91
		25@25	20.86	20.76	20.87
		50@0	20.85	20.88	20.84
	16-QAM	1@0	20.44	20.7	21.06
		1@25	20.68	20.73	21.27
		1@49	20.37	20.67	21.18
		25@0	19.75	19.97	20.02
		25@12	19.9	19.91	19.88
		25@25	19.84	19.93	19.81
		50@0	19.86	19.81	19.85
15M	QPSK	1@0	21.69	21.68	22.06
		1@37	21.81	21.89	22.09
		1@74	21.63	21.72	21.98
		36@0	20.79	20.98	21.03
		36@20	20.73	20.99	21.01
		36@39	20.92	20.99	20.91
		75@0	20.83	20.86	21.05
	16-QAM	1@0	20.49	20.6	21.16
		1@37	20.74	20.83	21.21
		1@74	20.47	20.57	21.01
		36@0	19.72	19.86	19.89
		36@20	19.79	19.85	19.95
		36@39	19.75	19.93	19.91
		75@0	19.69	19.98	19.99

Test Bandwidth	Test Modulation	Resource Block & RB offset	Low Channel (dBm)	Middle Channel (dBm)	High Channel (dBm)
20M	QPSK	1@0	21.36	21.63	21.58
		1@49	22.24	22.38	22.35
		1@99	21.41	21.58	21.61
		50@0	20.53	20.78	20.78
		50@24	20.79	20.89	20.86
		50@50	20.75	20.71	20.76
		100@0	20.75	20.77	20.75
	16-QAM	1@0	20.69	21.11	20.8
		1@49	20.96	21.57	21.16
		1@99	20.68	21.27	20.73
		50@0	19.55	19.82	19.91
		50@24	19.74	19.85	19.93
		50@50	19.8	19.84	19.95
		100@0	19.7	19.75	19.84

LTE Band 38:

Test Bandwidth	Test Modulation	Resource Block & RB offset	Low Channel (dBm)	Middle Channel (dBm)	High Channel (dBm)
5M	QPSK	1@0	22.28	21.84	21.8
		1@12	22.25	22	21.8
		1@24	22.07	21.83	21.62
		12@0	21.2	20.95	20.8
		12@7	21.2	21.02	20.71
		12@13	21.18	20.98	20.67
		25@0	21.31	21.01	20.68
	16-QAM	1@0	21.23	20.97	20.74
		1@12	21.22	21.03	20.67
		1@24	21.25	20.93	20.95
		12@0	20.23	19.99	19.73
		12@7	20.32	20.07	19.74
		12@13	20.27	19.97	19.76
		25@0	20.14	19.99	19.83
10M	QPSK	1@0	22.41	21.98	21.91
		1@25	22.44	22.03	21.89
		1@49	22.24	21.97	21.69
		25@0	21.31	21.06	20.84
		25@12	21.26	20.94	20.83
		25@25	21.16	20.96	20.75
		50@0	21.34	21.01	20.77
	16-QAM	1@0	21.36	20.85	20.89
		1@25	21.29	20.9	21
		1@49	21.16	20.74	20.65
		25@0	20.32	19.96	19.8
		25@12	20.23	20.09	19.92
		25@25	20.23	20.05	19.9
		50@0	20.33	20.04	19.76
15M	QPSK	1@0	22.35	21.94	21.73
		1@37	22.24	21.85	21.61
		1@74	22.19	21.8	21.62
		36@0	21.31	21.16	20.92
		36@20	21.18	21.12	20.9
		36@39	21.16	21.04	20.98
		75@0	21.24	20.99	20.85
	16-QAM	1@0	21.42	20.82	20.82
		1@37	21.27	20.62	20.75
		1@74	21.24	20.64	20.69
		36@0	20.25	20.14	19.66
		36@20	20.25	20.11	19.8
		36@39	20.34	20.13	19.72
		75@0	20.32	20.03	19.93

Test Bandwidth	Test Modulation	Resource Block & RB offset	Low Channel (dBm)	Middle Channel (dBm)	High Channel (dBm)
20M	QPSK	1@0	22.72	22.22	21.98
		1@49	22.94	22.42	22.26
		1@99	22.58	21.88	21.68
		50@0	21.76	20.96	20.87
		50@24	21.64	20.99	20.94
		50@50	21.7	21.13	20.97
		100@0	21.7	21.11	20.88
	16-QAM	1@0	21.69	20.96	20.63
		1@49	21.96	21.25	21.06
		1@99	21.38	20.62	20.38
		50@0	20.66	19.97	19.92
		50@24	20.65	20.12	19.96
		50@50	20.43	20.06	19.93
		100@0	20.4	20.07	19.91

WLAN: 2.4G

Mode	Channel frequency (MHz)	Data Rate	Duty cycle (%)	Average Output Power (dBm)
802.11b	2412	1Mbps	100	17.92
	2437			17.76
	2462			17.45
802.11g	2412	6Mbps	/	16.33
	2437			16.38
	2462			15.72
802.11n ht20	2412	MCS0	/	13.43
	2437			13.56
	2462			13.00
802.11n ht40	2422	MCS0	/	12.1
	2437			11.79
	2452			11.77

Note: The duty cycle test data and plots, please refer to the radio report: 2502T61980E-RF-00C, which was issued by Bay Area Compliance Laboratories Corp. (Dongguan).

WLAN: 5.2G

Mode	Channel frequency (MHz)	Data Rate	Duty cycle (%)	Average Output Power (dBm)
802.11a	5180	6Mbps	100	13.70
	5200			13.64
	5240			13.85
802.11n20	5180	MCS0	/	13.59
	5200			13.58
	5240			13.80
802.11n40	5190	MCS0	/	9.33
	5230			9.62
802.11ac80	5210	MCS0	/	9.32

WLAN: 5.3G

Mode	Channel frequency (MHz)	Data Rate	Duty cycle (%)	Average Output Power (dBm)
802.11a	5260	6Mbps	100	13.78
	5280			13.77
	5320			13.86
802.11n20	5260	MCS0	/	13.78
	5280			13.85
	5320			13.75
802.11n40	5270	MCS0	/	9.52
	5310			9.81
802.11ac80	5290	MCS0	/	9.51

WLAN: 5.6G

Mode	Channel frequency (MHz)	Data Rate	Duty cycle (%)	Average Output Power (dBm)
802.11a	5500	6Mbps	/	13.17
	5580			13.16
	5700			12.95
	5720			12.21
802.11n20	5500	MCS0	100	13.01
	5580			13.21
	5700			12.70
	5720			11.79
802.11n40	5510	MCS0	/	11.02
	5590			11.21
	5670			10.79
	5710			10.58
802.11ac80	5530	MCS0	/	9.97
	5610			10.12
	5690			9.52

WLAN: 5.8G

Mode	Channel frequency (MHz)	Data Rate	Duty cycle (%)	Average Output Power (dBm)
802.11a	5745	6Mbps	/	13.12
	5785			13.07
	5825			12.94
802.11n20	5745	MCS0	100	13.36
	5785			13.06
	5825			12.80
802.11n40	5755	MCS0	/	13.35
	5795			13.31
802.11ac80	5775	MCS0	/	13.03

Note:

1. The duty cycle test data and plots, please refer to the radio report: 2502T61980E-RF-00D, which was issued by Bay Area Compliance Laboratories Corp. (Dongguan).
2. The system support 802.11a/n20/n40/ac20/ac40/ac80, the ac20 and ac40 were reduced since the identical parameters with 802.11n20 and n40.

Bluetooth:

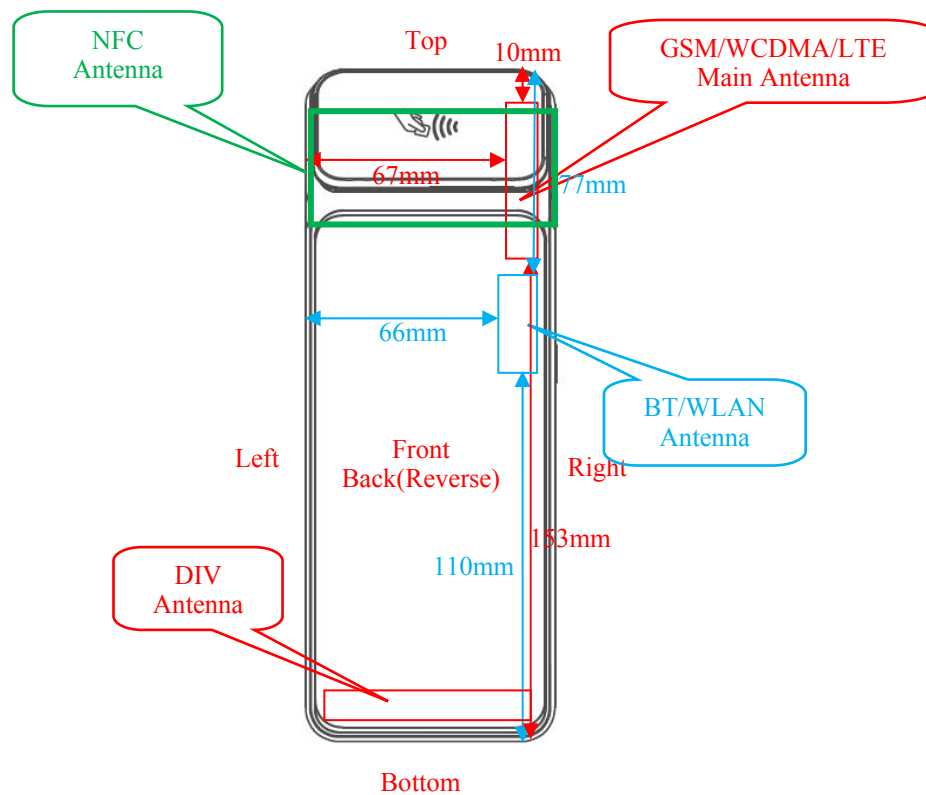
Mode	Channel frequency (MHz)	RF Output Power (dBm)
BDR(GFSK)	2402	1.29
	2441	1.94
	2460*	2.89
	2480	1.14
EDR($\pi/4$ -DQPSK)	2402	0.62
	2441	1.13
	2461*	1.79
	2480	0.17
EDR(8DPSK)	2402	0.46
	2441	1.14
	2460*	2.52
	2480	0.31
BLE 1Mbps	2402	3.07
	2440	3.42
	2480	2.65

Note:

* is Additional channel.

8. STANDALONE SAR TEST EXCLUSION CONSIDERATIONS

8.1 Antennas Location:



Note: DIV antenna is only used for receiving.

8.2 Antenna Distance To Edge

Antenna Distance To Edge(mm)						
Antenna	Back	Front	Left	Right	Top	Bottom
WWAN Antenna(GSM/WCDMA/LTE)	< 5	< 5	67	< 5	10	153
WLAN/BT Antenna	< 5	< 5	66	< 5	77	110

8.3 Standalone SAR test exclusion considerations

Body

Mode	Frequency (MHz)	Output Power (dBm)	Output Power (mW)	Distance (mm)	Calculated value	Threshold (1-g)	SAR Test Exclusion
WLAN 2.4G	2462	18	63.10	10	9.9	3.0	NO
WLAN 5.2G	5240	14	25.12	10	5.8	3.0	NO
WLAN 5.3G	5320	14	25.12	10	5.8	3.0	NO
WLAN 5.6G	5720	13.5	22.39	10	5.4	3.0	NO
WLAN 5.8G	5825	13.5	22.39	10	5.4	3.0	NO
Bluetooth	2480	3.5	2.24	10	0.4	3.0	YES

Limb

Mode	Frequency (MHz)	Output Power (dBm)	Output Power (mW)	Distance (mm)	Calculated value	Threshold (10-g)	SAR Test Exclusion
WLAN 2.4G	2462	18	63.10	0	19.8	7.5	NO
WLAN 5.2G	5240	14	25.12	0	11.5	7.5	NO
WLAN 5.3G	5320	14	25.12	0	11.6	7.5	NO
WLAN 5.6G	5720	13.5	22.39	0	10.7	7.5	NO
WLAN 5.8G	5825	13.5	22.39	0	10.8	7.5	NO
Bluetooth	2480	3.5	2.24	0	0.7	7.5	YES

Note:

1. The WLAN based average power for calculation. and bluetooth based peak output power for calculation.

NOTE:

The 1-g and 10-g SAR test exclusion thresholds for 100 MHz to 6 GHz at test separation distances ≤ 50 mm are determined by:

$[(\text{max. power of channel, including tune-up tolerance, mW}) / (\text{min. test separation distance, mm})] \cdot$

$[\sqrt{f(\text{GHz})}] \leq 3.0$ for 1-g SAR and ≤ 7.5 for 10-g extremity SAR, where

1. $f(\text{GHz})$ is the RF channel transmit frequency in GHz.
2. Power and distance are rounded to the nearest mW and mm before calculation.
3. The result is rounded to one decimal place for comparison.
4. When the minimum test separation distance is < 5 mm, a distance of 5 mm is applied to determine SAR test Exclusion.

According to KDB447498 D01 General RF Exposure Guidance v06: 4.3. General SAR test exclusion guidance

c) For frequencies below 100 MHz, the following may be considered for SAR test exclusion (also illustrated in Appendix C):

- 1) For test separation distances > 50 mm and < 200 mm, the power threshold at the corresponding test separation distance at 100 MHz in step b) is multiplied by $[1 + \log(100/f(\text{MHz}))]$
- 2) For test separation distances ≤ 50 mm, the power threshold determined by the equation in c) 1) for 50 mm and 100 MHz is multiplied by $\frac{1}{2}$
- 3) SAR measurement procedures are not established below 100 MHz

Measurement Result:

For NFC, the power of EUT: E Field@3m is 70.98dBuV/m \approx -24.22 dBm (0.004mW)

Note: $E[\text{dB}\mu\text{V/m}] = \text{EIRP}[\text{dBm}] + 95.2$ for $d = 3$ m.

SAR test exclusion threshold for NFC(13.56MHz) separation distance < 50 mm

$$= [474 * (1 + \log(100/f(\text{MHz}))) / 2]$$

$$= 443\text{mW}$$

$$> 0.004\text{mW}$$

Conclusion:

The NFC SAR evaluation can be exempted.

Note:

1. The E Field value of NFC, please refer to the report: 2502T61980E-RF-00G, which was issued by Bay Area Compliance Laboratories Corp. (Dongguan).

8.4 Standalone SAR estimation:

Mode	Frequency (MHz)	Output Power (dBm)	Output Power (mW)	Distance (mm)	Estimated SAR(W/kg)
BT Body	2480	3.5	2.24	10	0.05@1g
BT Limb	2480	3.5	2.24	0	0.04@10g

Note: The bluetooth based peak power for calculation.

When standalone SAR test exclusion applies to an antenna that transmits simultaneously with other antennas, the standalone SAR must be estimated according to following to determine simultaneous transmission SAR test exclusion:

$$\left[\frac{(\text{max. power of channel, including tune-up tolerance, mW})}{(\text{min. test separation distance, mm})} \right] \cdot \sqrt{f(\text{GHz})/x}$$

W/kg for test separation distances ≤ 50 mm;

where $x = 7.5$ for 1-g SAR and $x = 18.75$ for 10-g SAR.

When the minimum test separation distance is < 5 mm, a distance of 5 mm is applied to determine SAR test Exclusion

8.5 SAR test exclusion for the EUT edge considerations Result**Body SAR:**

Mode	Back	Front	Left	Right	Top	Bottom
BT	Exclusion*	Exclusion*	Exclusion*	Exclusion*	Exclusion*	Exclusion*
WLAN	Required	Required	Exclusion	Required	Exclusion	Exclusion
WWAN(GSM/WCDMA/LTE)	Required	Required	Exclusion	Required	Required	Exclusion

Note:

Required: The distance to Edge is less than 25mm, testing is required.

Exclusion: The distance to Edge is more than 25 mm, testing is not required.

Exclusion*: SAR test exclusion evaluation has been done above.

9. SAR MEASUREMENT RESULTS

This page summarizes the results of the performed dosimetric evaluation.

9.1 SAR Test Data

Environmental Conditions

Environmental Temperature:	21.4-22.3 °C	20.6-21.1 °C	22.3-23.1 °C
Relative Humidity:	42%	38%	43%
ATM Pressure:	100.4 kPa	100.1kPa	100.7 kPa
Test Date:	2025/06/22	2025/06/23	2025/06/24

Testing was performed by Lily Yang, Mikasa Mo, Led Lu.

GSM 850:**Body Mode:**

EUT Position	Frequency (MHz)	Test Mode	Max. Meas. Power (dBm)	Max. Rated Power (dBm)	1g SAR (W/kg)			
					Scaled Factor	Meas. SAR	Scaled SAR	Plot
Body Front (10mm)	824.2	GPRS	/	/	/	/	/	/
	836.6	GPRS	31.65	32	1.084	0.31	0.34	/
	848.8	GPRS	/	/	/	/	/	/
Body Back (10mm)	824.2	GPRS	/	/	/	/	/	/
	836.6	GPRS	31.65	32	1.084	0.124	0.13	/
	848.8	GPRS	/	/	/	/	/	/
Body Right (10mm)	824.2	GPRS	/	/	/	/	/	/
	836.6	GPRS	31.65	32	1.084	0.485	0.53	1#
	848.8	GPRS	/	/	/	/	/	/
Body Top (10mm)	824.2	GPRS	/	/	/	/	/	/
	836.6	GPRS	31.65	32	1.084	0.046	0.05	/
	848.8	GPRS	/	/	/	/	/	/

Limb Mode:

EUT Position	Frequency (MHz)	Test Mode	Max. Meas. Power (dBm)	Max. Rated Power (dBm)	10g SAR (W/kg)			
					Scaled Factor	Meas. SAR	Scaled SAR	Plot
Limb Right (0mm)	824.2	GPRS	/	/	/	/	/	/
	836.6	GPRS	31.65	32	1.084	0.895	0.97	2#
	848.8	GPRS	/	/	/	/	/	/

Note:

1. When the SAR value is less than half of the limit, testing for other channels are optional.
2. The EUT transmit and receive through the same GSM antenna while testing SAR.
3. When SAR or MPE is not measured at the maximum power level allowed for production units, the results must be scaled to the maximum tune-up tolerance limit according to the power applied to the individual channels tested to determine compliance.
4. When the maximum output power variation across the required test channels is > 0.5 dB, instead of the middle channel, the highest output power channel must be used.
5. The Multi-slot Classes of EUT is Class 12 which has maximum 4 Downlink slots and 4 Uplink slots, the maximum active slots is 5, when perform the multiple slots scan, 3DL+2UL is the worst case.
6. The max. time based average power of GPRS/EGPRS mode was selected to Body/Limb SAR testing.
7. According to the test results of Body Mode, the worst test position was selected to test for Limb mode.

PCS 1900:**Body Mode:**

EUT Position	Frequency (MHz)	Test Mode	Max. Meas. Power (dBm)	Max. Rated Power (dBm)	1g SAR (W/kg)			
					Scaled Factor	Meas. SAR	Scaled SAR	Plot
Body Front (10mm)	1850.2	GPRS	/	/	/	/	/	/
	1880	GPRS	27.68	28	1.076	0.284	0.31	/
	1909.8	GPRS	/	/	/	/	/	/
Body Back (10mm)	1850.2	GPRS	/	/	/	/	/	/
	1880	GPRS	27.68	28	1.076	0.042	0.05	/
	1909.8	GPRS	/	/	/	/	/	/
Body Right (10mm)	1850.2	GPRS	/	/	/	/	/	/
	1880	GPRS	27.68	28	1.076	0.285	0.31	3#
	1909.8	GPRS	/	/	/	/	/	/
Body Top (10mm)	1850.2	GPRS	/	/	/	/	/	/
	1880	GPRS	27.68	28	1.076	0.054	0.06	/
	1909.8	GPRS	/	/	/	/	/	/

Limb Mode:

EUT Position	Frequency (MHz)	Test Mode	Max. Meas. Power (dBm)	Max. Rated Power (dBm)	10g SAR (W/kg)			
					Scaled Factor	Meas. SAR	Scaled SAR	Plot
Limb Right (0mm)	1850.2	GPRS	/	/	/	/	/	/
	1880	GPRS	27.68	28	1.076	0.917	0.99	4#
	1909.8	GPRS	/	/	/	/	/	/

Note:

1. When the SAR value is less than half of the limit, testing for other channels are optional.
2. The EUT transmit and receive through the same GSM antenna while testing SAR.
3. When SAR or MPE is not measured at the maximum power level allowed for production units, the results must be scaled to the maximum tune-up tolerance limit according to the power applied to the individual channels tested to determine compliance.
4. When the maximum output power variation across the required test channels is > 0.5 dB, instead of the middle channel, the highest output power channel must be used.
5. The Multi-slot Classes of EUT is Class 12 which has maximum 4 Downlink slots and 4 Uplink slots, the maximum active slots is 5, when perform the multiple slots scan, 3DL+2UL is the worst case.
6. The max. time based average power of GPRS/EGPRS mode was selected to Body/Limb SAR testing.
7. According to the test results of Body Mode, the worst test position was selected to test for Limb mode.

WCDMA Band 2:**Body Mode:**

EUT Position	Frequency (MHz)	Test Mode	Max. Meas. Power (dBm)	Max. Rated Power (dBm)	1g SAR (W/kg)			
					Scaled Factor	Meas. SAR	Scaled SAR	Plot
Body Front (10mm)	1852.4	RMC	/	/	/	/	/	/
	1880	RMC	22.74	23	1.062	0.543	0.58	/
	1907.6	RMC	/	/	/	/	/	/
Body Back (10mm)	1852.4	RMC	/	/	/	/	/	/
	1880	RMC	22.74	23	1.062	0.072	0.08	/
	1907.6	RMC	/	/	/	/	/	/
Body Right (10mm)	1852.4	RMC	/	/	/	/	/	/
	1880	RMC	22.74	23	1.062	0.573	0.61	5#
	1907.6	RMC	/	/	/	/	/	/
Body Top (10mm)	1852.4	RMC	/	/	/	/	/	/
	1880	RMC	22.74	23	1.062	0.089	0.09	/
	1907.6	RMC	/	/	/	/	/	/

Limb Mode:

EUT Position	Frequency (MHz)	Test Mode	Max. Meas. Power (dBm)	Max. Rated Power (dBm)	10g SAR (W/kg)			
					Scaled Factor	Meas. SAR	Scaled SAR	Plot
Limb Right (0mm)	1852.4	RMC	/	/	/	/	/	/
	1880	RMC	22.74	23	1.062	1.55	1.65	6#
	1907.6	RMC	/	/	/	/	/	/

WCDMA Band 5:**Body Mode:**

EUT Position	Frequency (MHz)	Test Mode	Max. Meas. Power (dBm)	Max. Rated Power (dBm)	1g SAR (W/kg)			
					Scaled Factor	Meas. SAR	Scaled SAR	Plot
Body Front (10mm)	826.4	RMC	/	/	/	/	/	/
	836.6	RMC	22.53	23	1.114	0.289	0.32	/
	846.6	RMC	/	/	/	/	/	/
Body Back (10mm)	826.4	RMC	/	/	/	/	/	/
	836.6	RMC	22.53	23	1.114	0.118	0.13	/
	846.6	RMC	/	/	/	/	/	/
Body Right (10mm)	826.4	RMC	/	/	/	/	/	/
	836.6	RMC	22.53	23	1.114	0.462	0.51	7#
	846.6	RMC	/	/	/	/	/	/
Body Top (10mm)	826.4	RMC	/	/	/	/	/	/
	836.6	RMC	22.53	23	1.114	0.040	0.04	/
	846.6	RMC	/	/	/	/	/	/

Limb Mode:

EUT Position	Frequency (MHz)	Test Mode	Max. Meas. Power (dBm)	Max. Rated Power (dBm)	10g SAR (W/kg)			
					Scaled Factor	Meas. SAR	Scaled SAR	Plot
Limb Right (0mm)	826.4	RMC	/	/	/	/	/	/
	836.6	RMC	22.53	23	1.114	0.924	1.03	8#
	846.6	RMC	/	/	/	/	/	/

Note:

1. When the SAR value is less than half of the limit, testing for other channels are optional.
2. The EUT transmit and receive through the same antenna while testing SAR.
3. The default test configuration is to measure SAR with an established radio link between the EUT and a communication test set using a 12.2 kbps RMC(reference measurement Channel) Configured in All 1.
4. KDB 941225 D01-Body SAR is not required for HSDPA/HSUPA/HSPA+ when the maximum average output of each RF channel is less than ¼ dB higher than measured 12.2kbps RMC or the maximum SAR for 12.2kbps RMC is < 75% of SAR limit.
5. When SAR or MPE is not measured at the maximum power level allowed for production units, the results must be scaled to the maximum tune-up tolerance limit according to the power applied to the individual channels tested
6. According to the test results of Body Mode, the worst test position was selected to test for Limb mode.

LTE Band 2:**Body Mode:**

EUT Position	Frequency (MHz)	Bandwidth (MHz)	Test Mode	Max. Meas. Power (dBm)	Max. Rated Power (dBm)	1g SAR (W/kg)			
						Scaled Factor	Meas. SAR	Scaled SAR	Plot
Body Front (10mm)	1860	20	1RB	/	/	/	/	/	/
	1880	20	1RB	22.18	23	1.208	0.416	0.50	9#
	1900	20	1RB	/	/	/	/	/	/
	1880	20	50%RB	21.28	21.5	1.052	0.379	0.40	/
Body Back (10mm)	1860	20	1RB	/	/	/	/	/	/
	1880	20	1RB	22.18	23	1.208	0.104	0.13	/
	1900	20	1RB	/	/	/	/	/	/
	1880	20	50%RB	21.28	21.5	1.052	0.084	0.09	/
Body Right (10mm)	1860	20	1RB	/	/	/	/	/	/
	1880	20	1RB	22.18	23	1.208	0.411	0.50	/
	1900	20	1RB	/	/	/	/	/	/
	1880	20	50%RB	21.28	21.5	1.052	0.343	0.36	/
Body Top (10mm)	1860	20	1RB	/	/	/	/	/	/
	1880	20	1RB	22.18	23	1.208	0.071	0.09	/
	1900	20	1RB	/	/	/	/	/	/
	1880	20	50%RB	21.28	21.5	1.052	0.060	0.06	/

Limb Mode:

EUT Position	Frequency (MHz)	Bandwidth (MHz)	Test Mode	Max. Meas. Power (dBm)	Max. Rated Power (dBm)	10g SAR (W/kg)			
						Scaled Factor	Meas. SAR	Scaled SAR	Plot
Limb Front (0mm)	1860	20	1RB	/	/	/	/	/	/
	1880	20	1RB	22.18	23	1.208	0.663	0.80	10#
	1900	20	1RB	/	/	/	/	/	/
	1880	20	50%RB	21.28	21.5	1.052	0.545	0.57	/

LTE Band 4:**Body Mode:**

EUT Position	Frequency (MHz)	Bandwidth (MHz)	Test Mode	Max. Meas. Power (dBm)	Max. Rated Power (dBm)	1g SAR (W/kg)			
						Scaled Factor	Meas. SAR	Scaled SAR	Plot
Body Front (10mm)	1720	20	1RB	/	/	/	/	/	/
	1732.5	20	1RB	22.16	23	1.213	0.272	0.33	/
	1745	20	1RB	/	/	/	/	/	/
	1732.5	20	50%RB	21.24	21.5	1.062	0.236	0.25	/
Body Back (10mm)	1720	20	1RB	/	/	/	/	/	/
	1732.5	20	1RB	22.16	23	1.213	0.115	0.14	/
	1745	20	1RB	/	/	/	/	/	/
	1732.5	20	50%RB	21.24	21.5	1.062	0.093	0.10	/
Body Right (10mm)	1720	20	1RB	/	/	/	/	/	/
	1732.5	20	1RB	22.16	23	1.213	0.494	0.60	11#
	1745	20	1RB	/	/	/	/	/	/
	1732.5	20	50%RB	21.24	21.5	1.062	0.281	0.30	/
Body Top (10mm)	1720	20	1RB	/	/	/	/	/	/
	1732.5	20	1RB	22.16	23	1.213	0.043	0.05	/
	1745	20	1RB	/	/	/	/	/	/
	1732.5	20	50%RB	21.24	21.5	1.062	0.035	0.04	/

Limb Mode:

EUT Position	Frequency (MHz)	Bandwidth (MHz)	Test Mode	Max. Meas. Power (dBm)	Max. Rated Power (dBm)	10g SAR (W/kg)			
						Scaled Factor	Meas. SAR	Scaled SAR	Plot
Limb Right (0mm)	1720	20	1RB	/	/	/	/	/	/
	1732.5	20	1RB	22.16	23	1.213	0.841	1.02	12#
	1745	20	1RB	/	/	/	/	/	/
	1732.5	20	50%RB	21.24	21.5	1.062	0.734	0.78	/

LTE Band 5:**Body Mode:**

EUT Position	Frequency (MHz)	Bandwidth (MHz)	Test Mode	Max. Meas. Power (dBm)	Max. Rated Power (dBm)	1g SAR (W/kg)			
						Scaled Factor	Meas. SAR	Scaled SAR	Plot
Body Front (10mm)	829	10	1RB	/	/	/	/	/	/
	836.5	10	1RB	23.05	23.5	1.109	0.308	0.34	/
	844	10	1RB	/	/	/	/	/	/
	836.5	10	50%RB	22.04	22.5	1.112	0.261	0.29	/
Body Back (10mm)	829	10	1RB	/	/	/	/	/	/
	836.5	10	1RB	23.05	23.5	1.109	0.100	0.11	/
	844	10	1RB	/	/	/	/	/	/
	836.5	10	50%RB	22.04	22.5	1.112	0.076	0.08	/
Body Right (10mm)	829	10	1RB	/	/	/	/	/	/
	836.5	10	1RB	23.05	23.5	1.109	0.393	0.44	13#
	844	10	1RB	/	/	/	/	/	/
	836.5	10	50%RB	22.04	22.5	1.112	0.267	0.30	/
Body Top (10mm)	829	10	1RB	/	/	/	/	/	/
	836.5	10	1RB	23.05	23.5	1.109	0.034	0.04	/
	844	10	1RB	/	/	/	/	/	/
	836.5	10	50%RB	22.04	22.5	1.112	0.028	0.03	/

Limb Mode:

EUT Position	Frequency (MHz)	Bandwidth (MHz)	Test Mode	Max. Meas. Power (dBm)	Max. Rated Power (dBm)	10g SAR (W/kg)			
						Scaled Factor	Meas. SAR	Scaled SAR	Plot
Limb Right (0mm)	829	10	1RB	/	/	/	/	/	/
	836.5	10	1RB	23.05	23.5	1.109	0.868	0.96	14#
	844	10	1RB	/	/	/	/	/	/
	836.5	10	50%RB	22.04	22.5	1.112	0.671	0.75	/

LTE Band 7:**Body Mode:**

EUT Position	Frequency (MHz)	Bandwidth (MHz)	Test Mode	Max. Meas. Power (dBm)	Max. Rated Power (dBm)	1g SAR (W/kg)			
						Scaled Factor	Meas. SAR	Scaled SAR	Plot
Body Front (10mm)	2510	20	1RB	/	/	/	/	/	/
	2535	20	1RB	22.38	22.5	1.028	0.208	0.21	/
	2560	20	1RB	/	/	/	/	/	/
	2535	20	50%RB	20.89	21	1.026	0.177	0.18	/
Body Back (10mm)	2510	20	1RB	/	/	/	/	/	/
	2535	20	1RB	22.38	22.5	1.028	0.162	0.17	/
	2560	20	1RB	/	/	/	/	/	/
	2535	20	50%RB	20.89	21	1.026	0.132	0.14	/
Body Right (10mm)	2510	20	1RB	22.24	22.5	1.062	1.14	1.21	15#
	2535	20	1RB	22.38	22.5	1.028	1.09	1.12	/
	2560	20	1RB	22.35	22.5	1.035	1.1	1.14	/
	2510	20	50%RB	20.79	21	1.05	0.795	0.83	/
	2535	20	50%RB	20.89	21	1.026	0.81	0.83	/
	2560	20	50%RB	20.86	21	1.033	0.848	0.88	/
	2510	20	100%RB	20.75	21	1.059	0.775	0.82	/
Body Top (10mm)	2510	20	1RB	/	/	/	/	/	/
	2535	20	1RB	22.38	22.5	1.028	0.179	0.18	/
	2560	20	1RB	/	/	/	/	/	/
	2535	20	50%RB	20.89	21	1.026	0.152	0.16	/

Limb Mode:

EUT Position	Frequency (MHz)	Bandwidth (MHz)	Test Mode	Max. Meas. Power (dBm)	Max. Rated Power (dBm)	10g SAR (W/kg)			
						Scaled Factor	Meas. SAR	Scaled SAR	Plot
Limb Right (0mm)	2510	20	1RB	/	/	/	/	/	/
	2535	20	1RB	22.38	22.5	1.028	1.75	1.80	16#
	2560	20	1RB	/	/	/	/	/	/
	2535	20	50%RB	20.89	21	1.026	1.50	1.54	/

LTE Band 38:**Body Mode:**

EUT Position	Frequency (MHz)	Bandwidth (MHz)	Test Mode	Max. Meas. Power (dBm)	Max. Rated Power (dBm)	1g SAR (W/kg)			
						Scaled Factor	Meas. SAR	Scaled SAR	Plot
Body Front (10mm)	2580	20	1RB	/	/	/	/	/	/
	2595	20	1RB	22.42	23	1.143	0.216	0.25	/
	2610	20	1RB	/	/	/	/	/	/
	2595	20	50%RB	21.13	22	1.222	0.167	0.2	/
Body Back (10mm)	2580	20	1RB	/	/	/	/	/	/
	2595	20	1RB	22.42	23	1.143	0.153	0.17	/
	2610	20	1RB	/	/	/	/	/	/
	2595	20	50%RB	21.13	22	1.222	0.116	0.14	/
Body Right (10mm)	2580	20	1RB	22.94	23	1.014	0.977	0.99	/
	2595	20	1RB	22.42	23	1.143	0.979	1.12	17#
	2610	20	1RB	22.26	23	1.186	0.938	1.11	/
	2580	20	50%RB	21.76	22	1.057	0.802	0.85	/
	2595	20	50%RB	21.13	22	1.222	0.787	0.96	/
	2610	20	50%RB	20.97	22	1.268	0.747	0.95	/
	2595	20	100%RB	21.11	22	1.227	0.798	0.98	/
Body Top (10mm)	2580	20	1RB	/	/	/	/	/	/
	2595	20	1RB	22.42	23	1.143	0.188	0.21	/
	2610	20	1RB	/	/	/	/	/	/
	2595	20	50%RB	21.13	22	1.222	0.147	0.18	/

Limb Mode:

EUT Position	Frequency (MHz)	Bandwidth (MHz)	Test Mode	Max. Meas. Power (dBm)	Max. Rated Power (dBm)	10g SAR (W/kg)			
						Scaled Factor	Meas. SAR	Scaled SAR	Plot
Limb Right (0mm)	2580	20	1RB	/	/	/	/	/	/
	2595	20	1RB	22.42	23	1.143	1.54	1.76	18#
	2610	20	1RB	/	/	/	/	/	/
	2595	20	50%RB	21.13	22	1.222	1.36	1.66	/

Note:

1. When the SAR value is less than half of the limit, testing for other channels are optional.
2. SAR for LTE band exposure configurations is measured according to the procedures of KDB 941225 D05 SAR for LTE Devices v02r05.
3. KDB 941225 D05-SAR for higher order modulation is required only when the highest maximum output power for the configuration in the higher order modulation is > 0.5 dB higher than the same configuration in QPSK or when the reported SAR for the QPSK configuration is > 1.45 W/kg
4. KDB 941225 D05-For QPSK with 100% RB allocation, when the reported SAR measured for the Highest output power channel is < 1.45 W/kg, tests for the remaining required test channels are optional.
5. KDB 941225 D05- For QPSK with 100% RB allocation, SAR is not required when the highest maximum output power for 100 % RB allocation is less than the highest maximum output power in 50% and 1 RB allocations and the highest reported SAR for 1 RB and 50% RB allocation are ≤ 0.8 W/kg.
6. KDB 941225 D05- Start with the largest channel bandwidth and measure SAR for QPSK with 1 RB allocation, using the RB offset and required test channel combination with the highest maximum output power among RB offset the upper edge, middle and lower edge of each required test channel.
7. KDB 941225 D05- other channel bandwidths SAR test is required when the highest maximum output power of a configuration requiring testing in the smaller channel bandwidth is > 0.5 dB higher than the equivalent channel configurations in the largest channel bandwidth configuration or the reported SAR of a configuration for the largest channel bandwidth is > 1.45 W/kg. .
8. According to the test results of Body Mode, the worst test position was selected to test for Limb mode.

WLAN 2.4G:**Body Mode:**

EUT Position	Frequency (MHz)	Test Mode	Max. Meas. Power (dBm)	Max. Rated Power (dBm)	1g SAR (W/kg)				
					Scaled Factor	Duty cycle Factor	Meas. SAR	Scaled SAR	Plot
Body Front (10mm)	2412	802.11b	/	/	/	/	/	/	/
	2437	802.11b	17.76	18	1.057	1.0	0.192	0.2	/
	2462	802.11b	/	/	/	/	/	/	/
Body Back (10mm)	2412	802.11b	/	/	/	/	/	/	/
	2437	802.11b	17.76	18	1.057	1.0	0.072	0.08	/
	2462	802.11b	/	/	/	/	/	/	/
Body Right (10mm)	2412	802.11b	/	/	/	/	/	/	/
	2437	802.11b	17.76	18	1.057	1.0	0.332	0.35	19#
	2462	802.11b	/	/	/	/	/	/	/

Limb Mode:

EUT Position	Frequency (MHz)	Test Mode	Max. Meas. Power (dBm)	Max. Rated Power (dBm)	10g SAR (W/kg)				
					Scaled Factor	Duty cycle Factor	Meas. SAR	Scaled SAR	Plot
Limb Right (0mm)	2412	802.11b	/	/	/	/	/	/	/
	2437	802.11b	17.76	18	1.057	1.0	0.66	0.70	20#
	2462	802.11b	/	/	/	/	/	/	/

Note:

1. When the SAR value is less than half of the limit, testing for other channels are optional.
2. When SAR or MPE is not measured at the maximum power level allowed for production units, the results must be scaled to the maximum tune-up tolerance limit according to the power applied to the individual channels tested to determine compliance.
3. KDB 248227 D01-SAR measurement is not required for 2.4 GHz OFDM(802.11g/n) when the highest reported SAR for DSSS(802.11b) is ≤ 1.2 W/kg, and the output power for DSSS is not less than that for OFDM.
4. According to KDB 248227 D01, for SAR testing of WLAN with non-100% duty cycle, the measured SAR is scaled-up by the duty cycle scaling factor which is equal to "1/(duty cycle)".
5. According to the test results of Body Mode, the worst test position was selected to test for Limb mode.

WLAN 5.2G:**Body Mode:**

EUT Position	Frequency (MHz)	Test Mode	Max. Meas. Power (dBm)	Max. Rated Power (dBm)	1g SAR (W/kg)				
					Scaled Factor	Duty cycle Factor	Meas. SAR	Scaled SAR	Plot
Body Front (10mm)	5180	802.11a	/	/	/	/	/	/	/
	5200	802.11a	13.64	14	1.086	1.0	0.054	0.06	/
	5240	802.11a	/	/	/	/	/	/	/
Body Back (10mm)	5180	802.11a	/	/	/	/	/	/	/
	5200	802.11a	13.64	14	1.086	1.0	0.065	0.07	/
	5240	802.11a	/	/	/	/	/	/	/
Body Right (10mm)	5180	802.11a	/	/	/	/	/	/	/
	5200	802.11a	13.64	14	1.086	1.0	0.319	0.34	21#
	5240	802.11a	/	/	/	/	/	/	/

Limb Mode:

EUT Position	Frequency (MHz)	Test Mode	Max. Meas. Power (dBm)	Max. Rated Power (dBm)	10g SAR (W/kg)				
					Scaled Factor	Duty cycle Factor	Meas. SAR	Scaled SAR	Plot
Limb Right (0mm)	5180	802.11a	/	/	/	/	/	/	/
	5200	802.11a	13.64	14	1.086	1.0	1.60	1.74	22#
	5240	802.11a	/	/	/	/	/	/	/

Note:

1. When the SAR value is less than half of the limit, testing for other channels are optional.
2. When SAR or MPE is not measured at the maximum power level allowed for production units, the results must be scaled to the maximum tune-up tolerance limit according to the power applied to the individual channels tested to determine compliance.
3. For 802.11a mode power is the largest among 802.11a/n/ac, 802.11a mode as initial test configuration is selected to test.
4. According to KDB 248227 D01, for SAR testing of WLAN with non-100% duty cycle, the measured SAR is scaled-up by the duty cycle scaling factor which is equal to "1/(duty cycle)".
5. According to the test results of Body Mode, the worst test position was selected to test for Limb mode.

WLAN 5.3G:**Body Mode:**

EUT Position	Frequency (MHz)	Test Mode	Max. Meas. Power (dBm)	Max. Rated Power (dBm)	1g SAR (W/kg)				
					Scaled Factor	Duty cycle Factor	Meas. SAR	Scaled SAR	Plot
Body Front (10mm)	5260	802.11a	/	/	/	/	/	/	/
	5280	802.11a	13.97	14	1.007	1.0	0.057	0.06	/
	5320	802.11a	/	/	/	/	/	/	/
Body Back (10mm)	5260	802.11a	/	/	/	/	/	/	/
	5280	802.11a	13.97	14	1.007	1.0	0.047	0.05	/
	5320	802.11a	/	/	/	/	/	/	/
Body Right (10mm)	5260	802.11a	/	/	/	/	/	/	/
	5280	802.11a	13.97	14	1.007	1.0	0.373	0.38	23#
	5320	802.11a	/	/	/	/	/	/	/

Limb Mode:

EUT Position	Frequency (MHz)	Test Mode	Max. Meas. Power (dBm)	Max. Rated Power (dBm)	10g SAR (W/kg)				
					Scaled Factor	Duty cycle Factor	Meas. SAR	Scaled SAR	Plot
Limb Right (0mm)	5260	802.11a	/	/	/	/	/	/	/
	5280	802.11a	13.97	14	1.007	1.0	1.63	1.64	24#
	5320	802.11a	/	/	/	/	/	/	/

Note:

1. When the SAR value is less than half of the limit, testing for other channels are optional.
2. When SAR or MPE is not measured at the maximum power level allowed for production units, the results must be scaled to the maximum tune-up tolerance limit according to the power applied to the individual channels tested to determine compliance.
3. For 802.11a mode power is the largest among 802.11a/n/ac, 802.11a mode as initial test configuration is selected to test.
4. According to KDB 248227 D01, for SAR testing of WLAN with non-100% duty cycle, the measured SAR is scaled-up by the duty cycle scaling factor which is equal to "1/(duty cycle)".
5. According to the test results of Body Mode, the worst test position was selected to test for Limb mode.

WLAN 5.6G:**Body Mode:**

EUT Position	Frequency (MHz)	Test Mode	Max. Meas. Power (dBm)	Max. Rated Power (dBm)	1g SAR (W/kg)				
					Scaled Factor	Duty cycle Factor	Meas. SAR	Scaled SAR	Plot
Body Front (10mm)	5500	802.11n20	/	/	/	/	/	/	/
	5580	802.11n20	13.21	13.5	1.069	1.0	0.033	0.04	/
	5700	802.11n20	/	/	/	/	/	/	/
Body Back (10mm)	5500	802.11n20	/	/	/	/	/	/	/
	5580	802.11n20	13.21	13.5	1.069	1.0	0.052	0.06	/
	5700	802.11n20	/	/	/	/	/	/	/
Body Right (10mm)	5500	802.11n20	/	/	/	/	/	/	/
	5580	802.11n20	13.21	13.5	1.069	1.0	0.312	0.33	25#
	5700	802.11n20	/	/	/	/	/	/	/

Limb Mode:

EUT Position	Frequency (MHz)	Test Mode	Max. Meas. Power (dBm)	Max. Rated Power (dBm)	10g SAR (W/kg)				
					Scaled Factor	Duty cycle Factor	Meas. SAR	Scaled SAR	Plot
Limb Right (0mm)	5500	802.11n20	/	/	/	/	/	/	/
	5580	802.11n20	13.21	13.5	1.069	1.0	0.474	0.51	26#
	5700	802.11n20	/	/	/	/	/	/	/

Note:

1. When the SAR value is less than half of the limit, testing for other channels are optional.
2. When SAR or MPE is not measured at the maximum power level allowed for production units, the results must be scaled to the maximum tune-up tolerance limit according to the power applied to the individual channels tested to determine compliance.
3. For 802.11n20 mode power is the largest among 802.11a/n/ac, 802.11n20 mode as initial test configuration is selected to test.
4. According to KDB 248227 D01, for SAR testing of WLAN with non-100% duty cycle, the measured SAR is scaled-up by the duty cycle scaling factor which is equal to "1/(duty cycle)".
5. According to the test results of Body Mode, the worst test position was selected to test for Limb mode.

WLAN 5.8G:**Body Mode:**

EUT Position	Frequency (MHz)	Test Mode	Max. Meas. Power (dBm)	Max. Rated Power (dBm)	1g SAR (W/kg)				
					Scaled Factor	Duty cycle Factor	Meas. SAR	Scaled SAR	Plot
Body Front (10mm)	5745	802.11n20	/	/	/	/	/	/	/
	5785	802.11n20	13.06	13.5	1.107	1.0	0.040	0.04	/
	5825	802.11n20	/	/	/	/	/	/	/
Body Back (10mm)	5745	802.11n20	/	/	/	/	/	/	/
	5785	802.11n20	13.06	13.5	1.107	1.0	0.061	0.07	/
	5825	802.11n20	/	/	/	/	/	/	/
Body Right (10mm)	5745	802.11n20	/	/	/	/	/	/	/
	5785	802.11n20	13.06	13.5	1.107	1.0	0.286	0.32	27#
	5825	802.11n20	/	/	/	/	/	/	/

Limb Mode:

EUT Position	Frequency (MHz)	Test Mode	Max. Meas. Power (dBm)	Max. Rated Power (dBm)	10g SAR (W/kg)				
					Scaled Factor	Duty cycle Factor	Meas. SAR	Scaled SAR	Plot
Limb Right (0mm)	5745	802.11n20	/	/	/	/	/	/	/
	5785	802.11n20	13.06	13.5	1.107	1.0	1.2	1.33	28#
	5825	802.11n20	/	/	/	/	/	/	/

Note:

1. When the SAR value is less than half of the limit, testing for other channels are optional.
2. When SAR or MPE is not measured at the maximum power level allowed for production units, the results must be scaled to the maximum tune-up tolerance limit according to the power applied to the individual channels tested to determine compliance.
3. For 802.11n20 mode power is the largest among 802.11a/n/ac, 802.11n20 mode as initial test configuration is selected to test.
4. According to KDB 248227 D01, for SAR testing of WLAN with non-100% duty cycle, the measured SAR is scaled-up by the duty cycle scaling factor which is equal to "1/(duty cycle)".
5. According to the test results of Body Mode, the worst test position was selected to test for Limb mode.

10. MEASUREMENT VARIABILITY

In accordance with published RF Exposure KDB procedure 865664 D01 SAR measurement 100 MHz to 6 GHz v01. These additional measurements are repeated after the completion of all measurements requiring the same head or body tissue-equivalent medium in a frequency band. The test device should be returned to ambient conditions (normal room temperature) with the battery fully charged before it is re-mounted on the device holder for the repeated measurement(s) to minimize any unexpected variations in the repeated results

- 1) Repeated measurement is not required when the original highest measured SAR is < 0.80 W/kg; steps 2) through 4) do not apply.
- 2) When the original highest measured SAR is ≥ 0.80 W/kg, repeat that measurement once.
- 3) Perform a second repeated measurement only if the ratio of largest to smallest SAR for the original and first repeated measurements is > 1.20 or when the original or repeated measurement is ≥ 1.45 W/kg ($\sim 10\%$ from the 1-g SAR limit).
- 4) Perform a third repeated measurement only if the original, first or second repeated measurement is ≥ 1.5 W/kg and the ratio of largest to smallest SAR for the original, first and second repeated measurements is > 1.20 .

Note: The same procedures should be adapted for measurements according to extremity and occupational exposure limits by applying a factor of 2.5 for extremity exposure and a factor of 5 for occupational exposure to the corresponding SAR thresholds.

The Highest Measured SAR Configuration in Each Frequency Band

Body

SAR probe calibration point	Frequency Band	Freq.(MHz)	EUT Position	1g Meas. SAR (W/kg)		Largest to Smallest SAR Ratio
				Original	Repeated	
2450MHz	LTE Band 7	2510	Body Right (10mm)	1.14	1.07	1.07
2600MHz	LTE Band 7	2560	Body Right (10mm)	1.1	1.15	1.05

Note:

1. The measured SAR results **do not** have to be scaled to the maximum tune-up tolerance to determine if repeated measurements are required.
2. SAR measurement variability must be assessed for each frequency band, which is determined by the **SAR probe calibration point and tissue-equivalent medium** used for the device measurements.

11. DUT HOLDER PERTURBATIONS

In accordance with TCB workshop October 2016:

- 1) SAR perturbation due to test device holders, depending on antenna locations, buttons locations on phones or device, form factor (e.g. dongles etc.), the measured SAR could be influenced by the relative positions of the test device and its holder
- 2) SAR measurement standards have included protocols to evaluate this with a flat phantom, with and without the device holder
- 3) When the highest reported SAR of an antenna is > 1.2 W/kg, holder perturbation verification is required for each antenna, using the highest SAR configuration among all applicable frequency bands in the same exact device and holder positions used for head and body SAR measurements; i.e. same device/button locations in the holder

Per IEEE 1528: 2013/Annex E/E.4.1.1: Device holder perturbation tolerance for a specific test device: Type B

When it is unknown if a device holder perturbs the fields of a test device, the SAR uncertainty shall be assessed with a flat phantom (see Clause 5) by comparing the SAR with and without the device holder according to the following tests:

The SAR tolerance for device holder disturbance is computed using Equation (E.21) and entered in the corresponding row of the appropriate uncertainty table with an assumed rectangular probability distribution and $\nu_i = \infty$ degrees of freedom:

$$SAR_{\text{tolerance}} [\%] = 100 \times \left(\frac{SAR_{w/\text{holder}} - SAR_{w/o \text{ holder}}}{SAR_{w/o \text{ holder}}} \right) \quad (\text{E.21})$$

The Highest Measured SAR Configuration among all applicable Frequency Band

Frequency Band	Freq.(MHz)	EUT Position	10g Meas. SAR (W/kg)		The Device holder perturbation uncertainty
			With holder	Without holder	
2450MHz	2535	Limb Right	1.75	1.76	-0.6%

12. SAR SIMULTANEOUS TRANSMISSION DESCRIPTION

12.1 Simultaneous Transmission:

Description of Simultaneous Transmit Capabilities		
Transmitter Combination	Simultaneous?	Hotspot?
WWAN(GSM/WCDMA/LTE) + WLAN 2.4G + NFC	√	√
WWAN(GSM/WCDMA/LTE) + WLAN 5.2/5.8G + NFC	√	√
WWAN(GSM/WCDMA/LTE) + WLAN 5.3/5.6G + NFC	√	×
WWAN(GSM/WCDMA/LTE) + Bluetooth + NFC	√	×
WLAN 2.4G+ Bluetooth + NFC	×	×
WLAN 5G + Bluetooth + NFC	×	×
WLAN 2.4G + WLAN 5G + NFC	×	×

Note:

1. For the EIRP of NFC is 0.004mW, per KDB447498 D01 clause 4.3, the estimated SAR is so lower, so the NFC almost have no influence on the results of simultaneous transmission.

12.2 Simultaneous SAR test exclusion considerations:

Body SAR:

Mode(SAR1+SAR2)	Position	Reported SAR(W/kg)		ΣSAR < 1.6W/kg
		SAR1	SAR2	
WWAN(GSM/WCDMA/LTE) + WLAN 2.4G (Hotspot)	Body	1.21	0.35	1.56
WWAN(GSM/WCDMA/LTE) + WLAN 5G (Hotspot)	Body	1.21	0.34	1.55
WWAN(GSM/WCDMA/LTE) + WLAN 5G	Body	1.21	0.38	1.59
WWAN(GSM/WCDMA/LTE) + Bluetooth	Body	1.21	0.05	1.26

Conclusion:

Sum of SAR: ΣSAR ≤ 1.6 W/kg therefore simultaneous transmission SAR with Volume Scans is **not required**.

Limb SAR:

Mode(SAR1+SAR2)	Position	Reported SAR(W/kg)		ΣSAR < 4.0W/kg
		SAR1	SAR2	
WWAN(GSM/WCDMA/LTE) + WLAN 2.4G	Limb	1.80	0.70	2.50
WWAN(GSM/WCDMA/LTE) + WLAN 5G	Limb	1.80	1.74	3.54
WWAN(GSM/WCDMA/LTE) + Bluetooth	Limb	1.80	0.04	1.84

Conclusion:

Sum of SAR: ΣSAR ≤ 4.0 W/kg therefore simultaneous transmission SAR with Volume Scans is **not required**.

APPENDIX A - MEASUREMENT UNCERTAINTY

The uncertainty budget has been determined for the measurement system and is given in the following Table.

Measurement uncertainty evaluation for IEEE1528-2013 SAR test

Uncertainty component	Tolerance/ uncertainty ± %	Probability distribution	Divisor	ci (1 g)	ci (10 g)	Standard uncertainty ± %, (1 g)	Standard uncertainty ± %, (10 g)
Measurement system							
Probe calibration(k=1)	6.55	N	1	1	1	6.6	6.6
Axial isotropy	4.7	R	$\sqrt{3}$	$\sqrt{0.5}$	$\sqrt{0.5}$	1.9	1.9
Hemispherical isotropy	9.6	R	$\sqrt{3}$	$\sqrt{0.5}$	$\sqrt{0.5}$	3.9	3.9
Boundary effect	1.0	R	$\sqrt{3}$	1	1	0.6	0.6
Linearity	4.7	R	$\sqrt{3}$	1	1	2.7	2.7
System detection limits	1.0	R	$\sqrt{3}$	1	1	0.6	0.6
Modulation response	0.0	R	$\sqrt{3}$	1	1	0.0	0.0
Readout electronics	0.3	N	1	1	1	0.3	0.3
Response time	0.0	R	$\sqrt{3}$	1	1	0.0	0.0
Integration time	0.0	R	$\sqrt{3}$	1	1	0.0	0.0
RF ambient conditions-noise	1.0	R	$\sqrt{3}$	1	1	0.6	0.6
RF ambient conditions-reflections	1.0	R	$\sqrt{3}$	1	1	0.6	0.6
Probe positioner mech. tolerance	0.8	R	$\sqrt{3}$	1	1	0.5	0.5
Probe positioning with respect to phantom shell	6.7	R	$\sqrt{3}$	1	1	3.9	3.9
Extrapolation, interpolation, and integrations algorithms for max. SAR evaluation	2.0	R	$\sqrt{3}$	1	1	1.2	1.2
Test sample related							
Test sample positioning	3.3	N	1	1	1	3.3	3.3
Device holder uncertainty	0.6	N	1	1	1	0.6	0.6
Output power variation –SAR draft measurement	5.0	R	$\sqrt{3}$	1	1	2.9	2.9
SAR scaling	2.8	R	$\sqrt{3}$	1	1	1.6	1.6
Phantom and tissue parameters							
Phantom shell uncertainty– shape, thickness and permittivity	4.0	R	$\sqrt{3}$	1	1	2.3	2.3
Uncertainty in SAR correction for deviations in permittivity and conductivity	1.9	N	1	1	0.84	1.9	1.6
Liquid conductivity meas.	2.5	N	1	0.78	0.71	2.0	1.8
Liquid permittivity meas.	2.5	N	1	0.23	0.26	0.6	0.7
Liquid conductivity – temperature uncertainty	1.7	R	$\sqrt{3}$	0.78	0.71	0.8	0.7
Liquid permittivity – temperature uncertainty	0.3	R	$\sqrt{3}$	0.23	0.26	0.0	0.0
Combined standard uncertainty		RSS				12.1	12.0
Expanded uncertainty (95 % confidence interval)		k=2				24.2	24.0

APPENDIX B - SAR PLOTS

Please refer to the attachment.

APPENDIX C - EUT TEST POSITION PHOTOS

Please refer to the attachment.

APPENDIX D - PROBE CALIBRATION CERTIFICATES

Please refer to the attachment.

APPENDIX E - DIPOLE CALIBRATION CERTIFICATES

Please refer to the attachment.

APPENDIX F - RETURN LOSS AND IMPEDANCE MEASUREMENT

Please refer to the attachment.

*******END OF REPORT*******