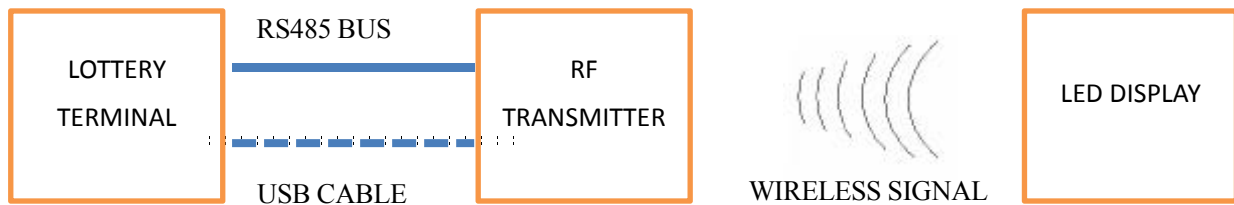


User's manual For Lottery Jackpot Sign

SuperVision provides a program which is a graphical tool for communicating between a Windows PC and SuperVision's updateable Jackpot transmitter. Using this software, customers can quickly test what's the function of this product, as well as observe the serial protocol in action.



Connection of whole system

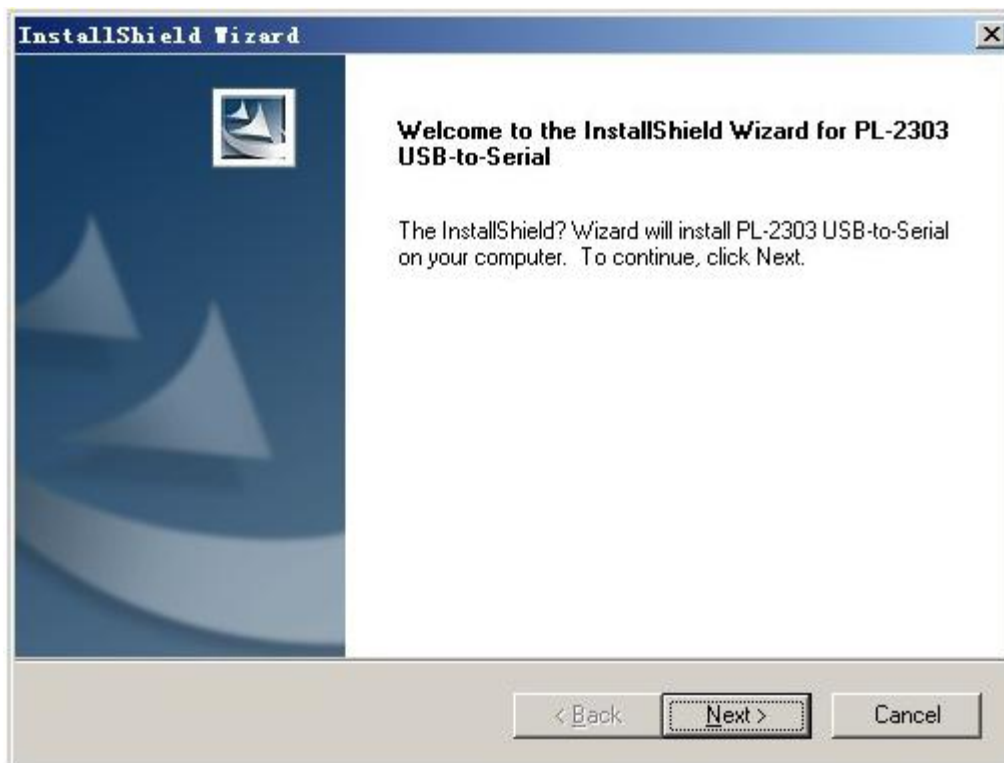
1. Getting Started

The Updateable Jackpot transmitter can be able to communicate to a lottery terminal which running Windows OS via 2 different interface, 485 and USB. To USB interface, one device drivers must be installed. The driver is provided by PROLIFIC, the manufacturer of the USB interface circuit inside the Transmitter. The drivers are available on the CD provided by SuperVision, and may also be available through Microsoft's Windows Update on the internet. To install the drivers, first connect the Transmitter to a Windows PC using a supplied USB cable.

Find out the installation program of 'PL-2303 Driver Installer' in the CD folder 'PL-2303 Driver Installer_en', launch the installation program by double-click. You will see the following installation process step by step.



Step1, Starting.



Step2, Click 'Next'.

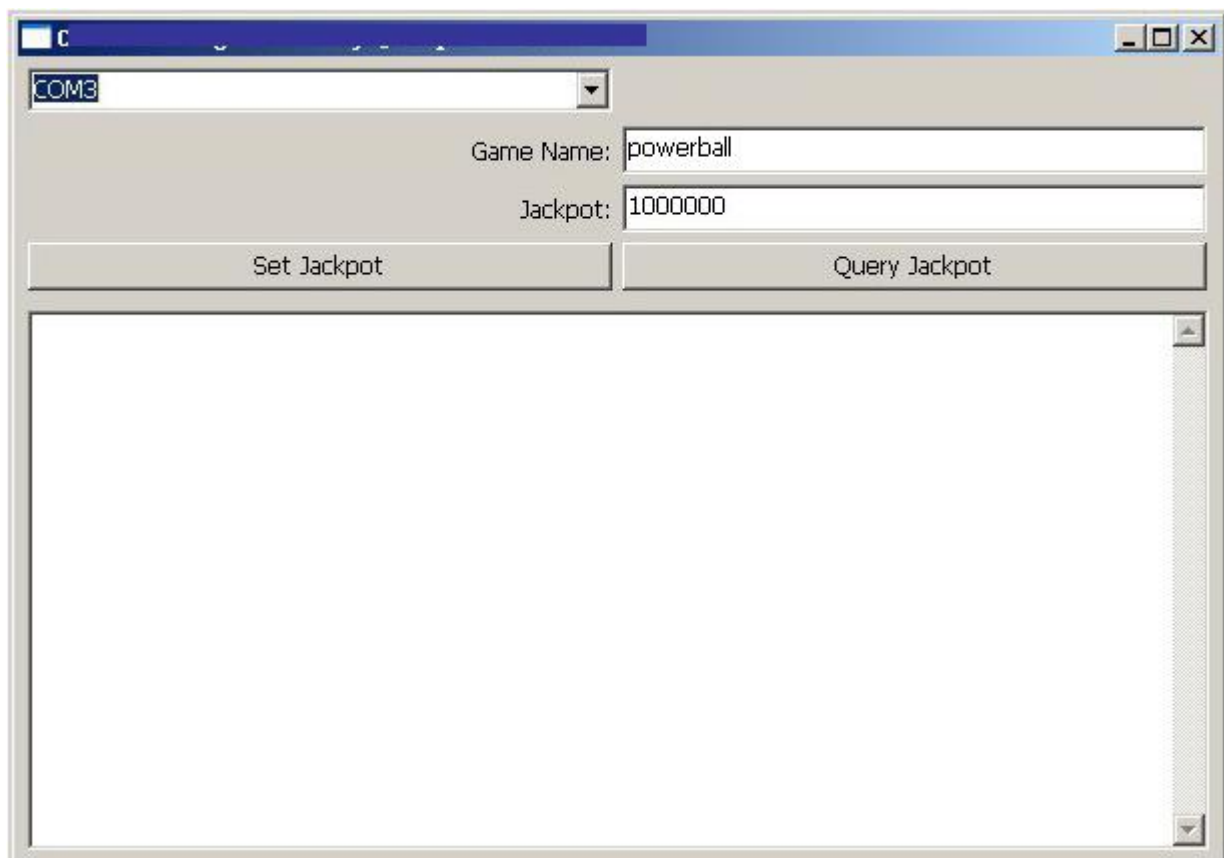


Step3, Click 'Yes'



Step4, installation finished

Then, find out the test-program 'Jackpot-test.exe' in the same location as above USB drivers, the program interface is shown as follow:



Testing program interface after launching

2. Functional operation

(1) Select serial port

Before running the program, connect the Transmitter to the Windows PC via 485 or USB interface, Each time the testing program is started, the serial port must be selected. Choose the port ID such as 'COM1', click 'Connect' button.

Once the serial port chose is correct, the 'set jackpot' and 'query jackpot' buttons are enabled.

(2) Set Jackpot

In order to update the jackpot in the transmitter, use the following process:

- I. Enter the game name.
- II. Enter the new jackpot, in dollars. Enter only numbers, with no punctuation, letters or other symbols.
- III. Click on 'Set jackpot'.

When the Set Jackpot button is clicked, the new jackpot is sent to the transmitter. Then forward to the Lottery Sign and display accordingly via wireless communication.

What will be shown is only the millions columns of the jackpot(0,000,000 to 999,000,000)

| Example: | Jackpot(Dollar) | Display Digits |
|----------|-----------------|----------------|
| | 345,000,000 | 345 |
| | 34,543,132 | 34 |
| | 12,345,000,057 | 345 |

(3) Query Jackpot

To verify the jackpot in the transmitter, use the following process:

- I. Enter the game name.
- II. Click on 'Query Jackpot'.

When the Query Jackpot button is clicked, a message is sent to the transmitter asking for the latest jackpot. The transmitter responds with a Set Jackpot message, which should appear identical to the message that was sent when the Set Jackpot button was clicked.

The returned Jackpot will be display in the text memo.

FCC STATEMENT :

This device complies with Part 15 of the FCC Rules. Operation is subject to the following two conditions:

(1) This device may not cause harmful interference, and (2) This device must accept any interference received, including interference that may cause undesired operation.

Warning: Changes or modifications not expressly approved by the party responsible for compliance could void the user's authority to operate the equipment.

NOTE: This equipment has been tested and found to comply with the limits for a Class B digital device, pursuant to Part 15 of the FCC Rules. These limits are designed to provide reasonable protection against harmful interference in a residential installation. This equipment generates uses and can radiate radio frequency energy and, if not installed and used in accordance with the instructions, may cause harmful interference to radio communications. However, there is no guarantee that interference will not occur in a particular installation. If this equipment does cause harmful interference to radio or television reception, which can be determined by turning the equipment off and on, the user is encouraged to try to correct the interference by one or more of the following measures:

Reorient or relocate the receiving antenna.

Increase the separation between the equipment and receiver.

Connect the equipment into an outlet on a circuit different from that to which the receiver is connected.

Consult the dealer or an experienced radio/TV technician for help.