

Rhein Tech Laboratories, Inc.
360 Herndon Parkway
Suite 1400
Herndon, VA 20170
<http://www.rheintech.com>

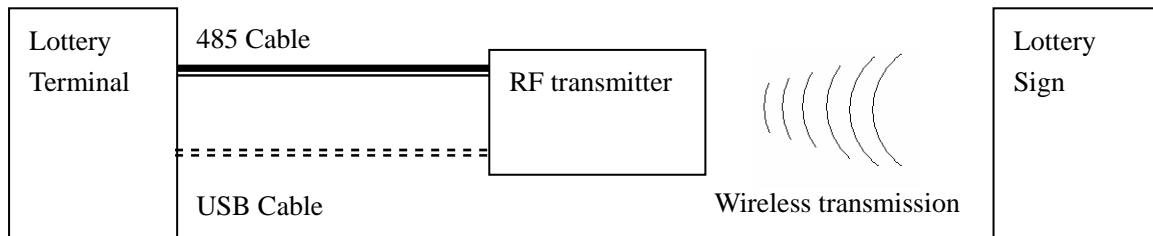
Client: Supervision Two Inc.
Model: Lot062009
Standards: FCC 15.231
FCC ID: XD4-062009LOTSIGN
Report #: 2009179

Appendix G: Manual

Please see the following pages.

User's manual For New York Lottery Jackpot Sign

SuperVision provides a program which is a graphical tool for communicating between a Windows PC and SuperVision's updateable Jackpot transmitter. Using this software, customers can quickly test what's the function of this product, as well as observe the serial protocol in action.



Connection of whole system

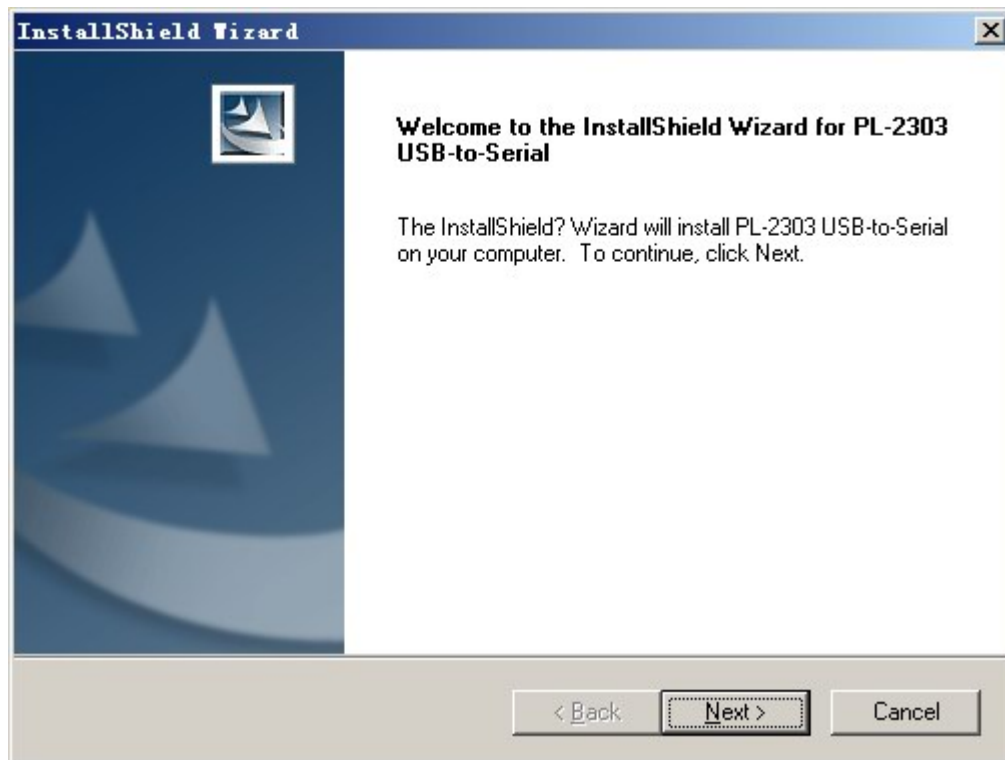
1. Getting Started

The Updateable Jackpot transmitter can be able to communicate to a lottery terminal which running Windows OS via 2 different interface, 485 and USB. To USB interface, one device drivers must be installed. The driver is provided by PROLIFIC, the manufacturer of the USB interface circuit inside the Transmitter. The drivers are available on the CD provided by SuperVision, and may also be available through Microsoft's Windows Update on the internet. To install the drivers, first connect the Transmitter to a Windows PC using a supplied USB cable.

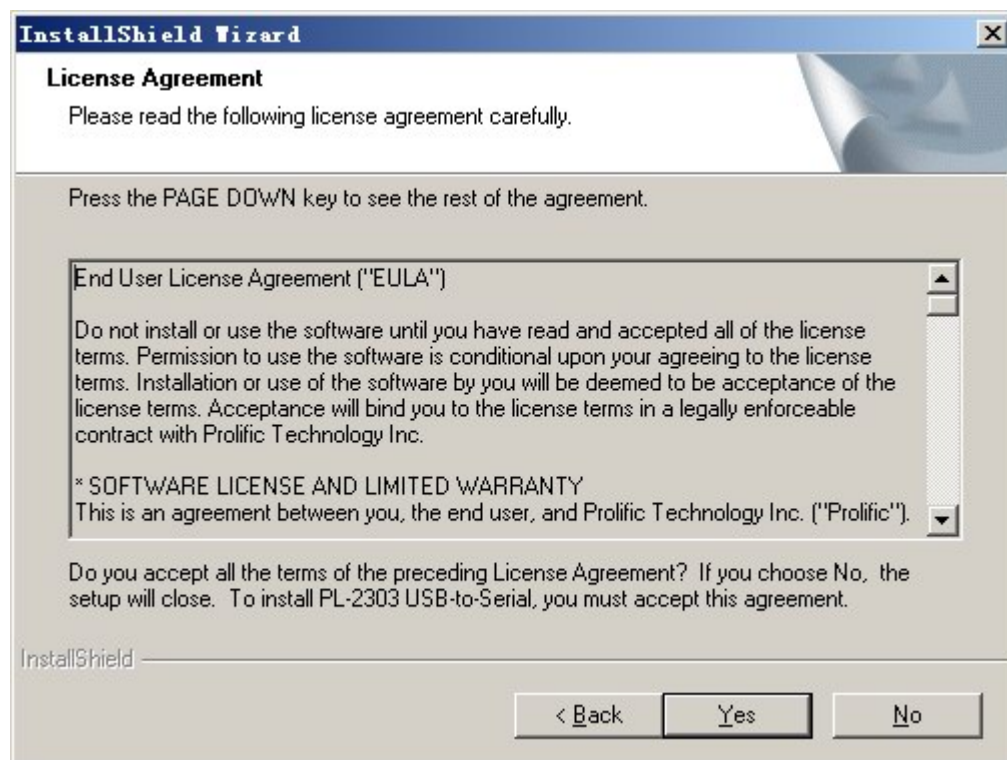
Find out the installation program of 'PL-2303 Driver Installer' in the CD folder 'PL-2303 Driver Installer_en', launch the installation program by double-click. You will see the following installation process step by step.



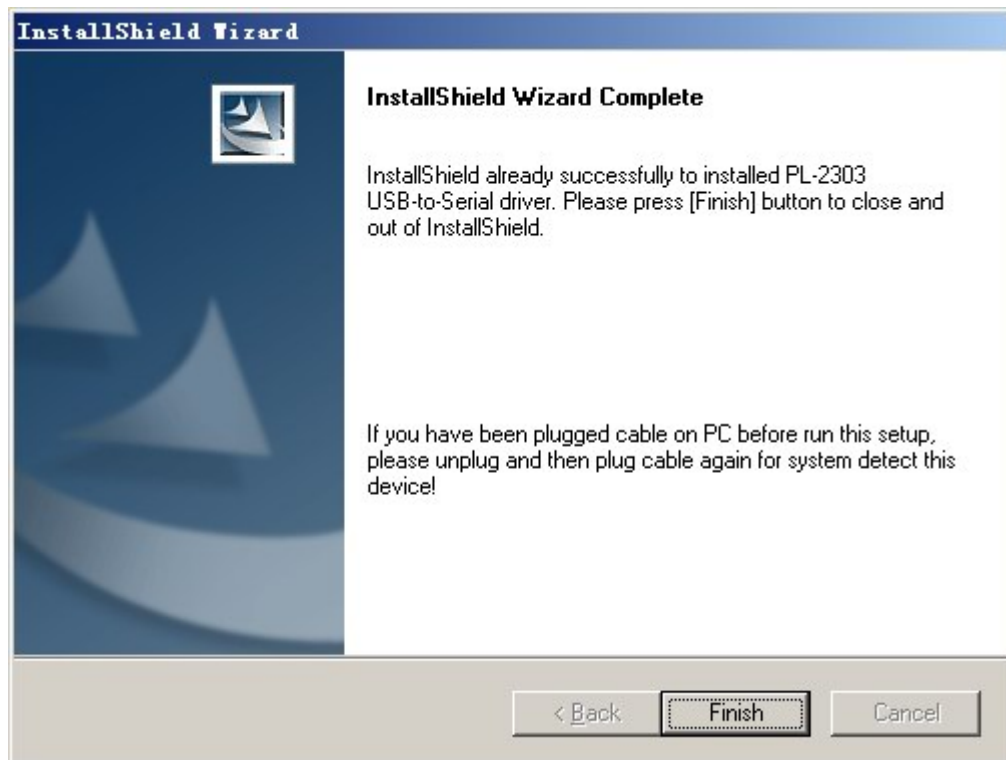
Step1, Starting.



Step2, Click 'Next'.

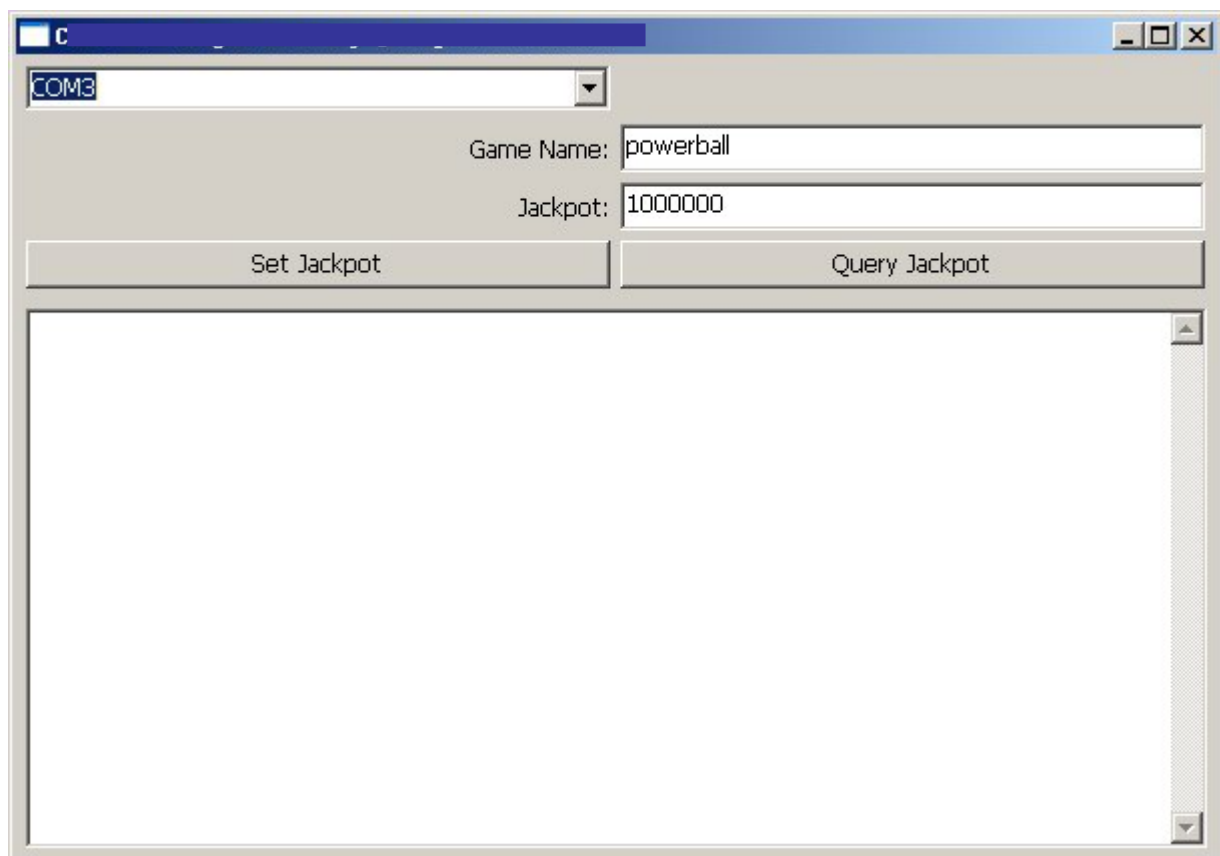


Step3, Click 'Yes'



Step4, installation finished

Then, find out the test-program 'Jackpot-test.exe' in the same location as above USB drivers, the program interface is shown as follow:



Testing program interface after launching

2. Functional operation

(1) Select serial port

Before running the program, connect the Transmitter to the Windows PC via 485 or USB interface, Each time the testing program is started, the serial port must be selected. Choose the port ID such as 'COM1', click 'Connect' button.

Once the serial port chose is correct, the 'set jackpot' and 'query jackpot' buttons are enabled.

(2) Set Jackpot

In order to update the jackpot in the transmitter, use the following process:

- I. Enter the game name.
- II. Enter the new jackpot, in dollars. Enter only numbers, with no punctuation, letters or other symbols.
- III. Click on 'Set jackpot'.

When the Set Jackpot button is clicked, the new jackpot is sent to the transmitter. Then forward to the Lottery Sign and display accordingly via wireless communication.

What will be shown is only the millions columns of the jackpot(0,000,000 to 999,000,000)

Example:	Jackpot(Dollar)	Display Digits
	345,000,000	345
	34,543,132	34
	12,345,000,057	345

(3) Query Jackpot

To verify the jackpot in the transmitter, use the following process:

- I. Enter the game name.
- II. Click on 'Query Jackpot'.

When the Query Jackpot button is clicked, a message is sent to the transmitter asking for the latest jackpot. The transmitter responds with a Set Jackpot message, which should appear identical to the message that was sent when the Set Jackpot button was clicked.

The returned Jackpot will be display in the text memo.

Changes or modifications not expressly approved by the party responsible for compliance could void the user's authority to operate the equipment.