

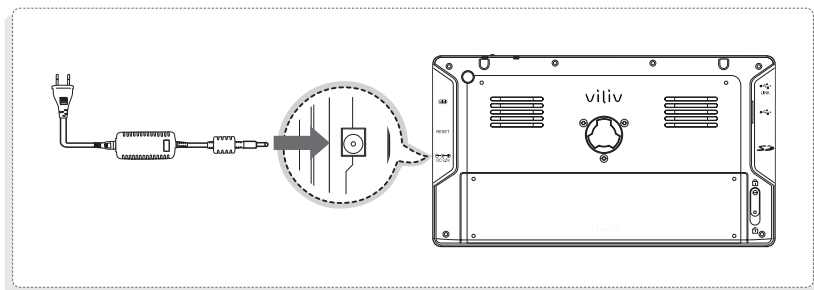


# Installation and Cable Connection

The connections of external devices may vary in accordance with products.

## Power Connection (Charging Adaptor)

The charger is connected to the power adaptor terminal on the left side of the station.



### Notice

Power Status Indicator: Power Off / Standby Mode / Max. Power Saving Mode

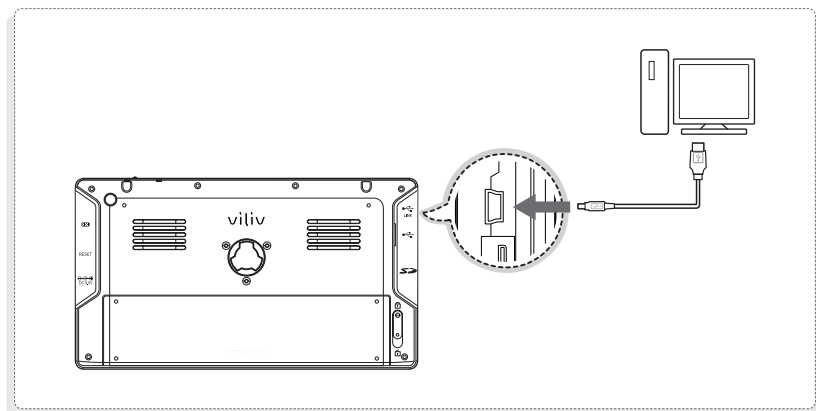
☞ While charging: Red / Fully charged: Blue off

Power On Mode

☞ While charging: Red / Fully charged: Blue

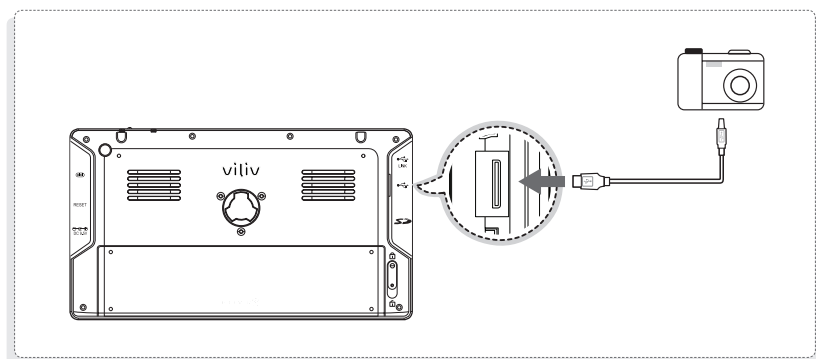
## USB Data Link Connection

A USB cable is connected to the USB Data Link port on the right side of the station.




## USB Connection

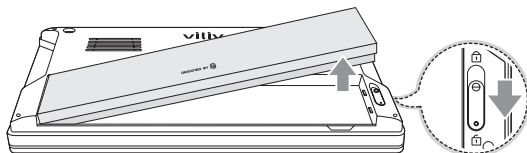
This is used for the connection of external devices, such as digital camera, external HDD, etc.



# Separating · Attaching Battery

## Separating Battery


Depress the Battery Separation/Lock button on the rear of the station in  direction as shown in the figure. Slightly push the battery up in the battery separation groove and then separate the battery.

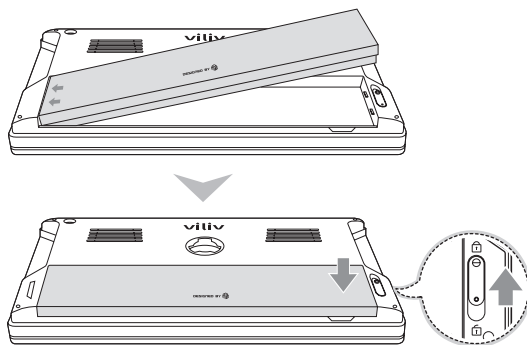


### Notice

- Separate the charger after turning the power of the station off.
- If not, you may receive an electric shock by a short circuit in the battery power part.

## Attaching Battery

Align the battery in the groove as shown in the figure below and then press it until it is closely attached to the main body. Push up the Battery Separation/Lock button on the rear of the station in  direction as shown in the figure below.



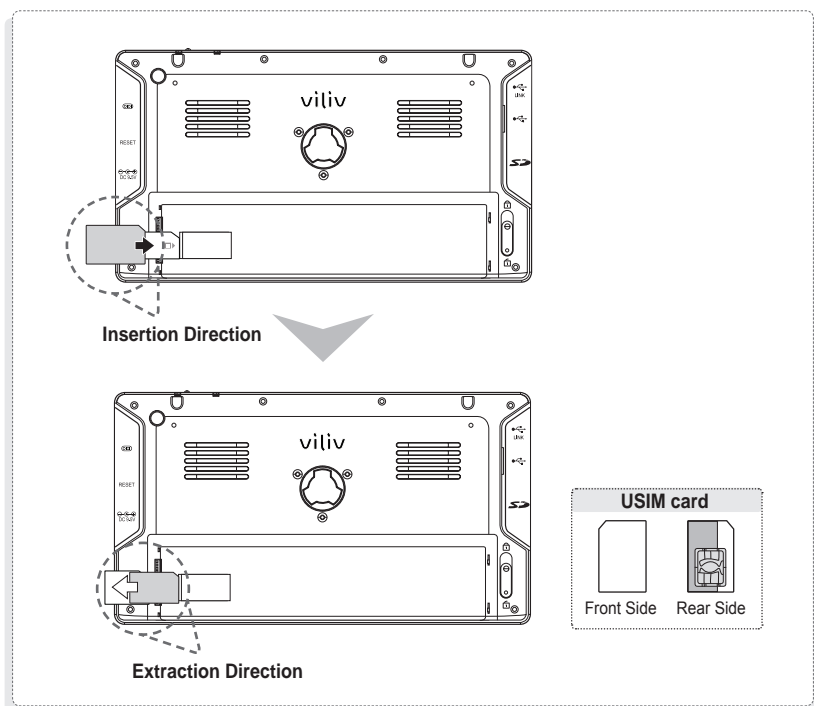
### Notice

- If the battery is misaligned with the groove and you attempt to mount the battery, the device may be damaged.

## Inserting · Extracting USIM Card

**How to Insert ↑ :** Let the front of a USIM card face the USIM card slot and then push it in the arrow direction until a click sound is heard. (If, however, you push the USIM card using too much force, the card may be damaged.)

**How to Extract ↓ :** Since this device adopts a one-touch method, you may gently press on the end of the USIM card to extract it automatically. (Pull out the USIM card slightly protruded.)



### Notice

- Please, turn the power of the station off before inserting or extracting the USIM card.

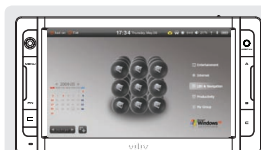
## Turning the Power On/Off



### Turning the Power On

To turn the power on, move the Power button on the top of the station to the left.

- ▷ The LCD screen turns on and the main screen is displayed.



### Turning the Power Off

If Windows OS is running, turn the power off with the Turn the Power menu on the Start menu. If the system is stopped during the operation, move the Power button on the right side to the left side and hold the button for over 4 seconds to turn the power off.

- ▷ Since the file that you are working on is closed without saving, it is better not to use this function.
- ▷ If you turn the power off with the button, this function is performed in accordance with the power option specified in Windows OS.

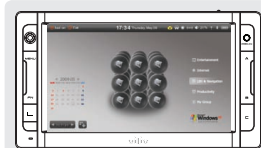
## Setting/Cancelling Hold Function



### Hold Setting

Move the Hold button on the top of the station to the right.

- ▷ Once the lock function is set, the screen touch function and all of the button functions are not available.



### Cancelling the Hold Mode

Move the Hold button on the top of the station to the left.

- ▷ Once the lock function is set, the screen touch function and all of the button functions are not available.

## Jog and Function Buttons

The Jog key has different functions in accordance with the program functions. Refer to the detailed manual for the description of functions.



### Up↑/Down↓/Left←/Right→ Move (○/○/○/○)

This is the button to move in Up↑/Down↓/Left←/Right→ direction on screen.



### Selection (Center Key of the Direction Keys)

Enter button



### MENU

It is used to move to the main menu.



### MENU + A

Brightness adjustment  
(Up)

### MENU + B

Brightness adjustment  
(Up)

### MENU + C

Windows + U



### FN

BIOS Mode-F8 (Advanced Win XP Mode) / Win XP Mode-F10



### FN + A

Volume adjustment (Up)

### FN + B

Volume adjustment (Down)



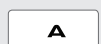
### Virtual Keyboard

Virtual keyboard is activated.



### ICON

BIOS Mode-DEL (Install) / Win XP Mode-Windows+H (Soft Keyboard)



### A

BIOS Mode-ESC / Win XP Mode-OK (Left Mouse Button)



### B

BIOS Mode-F11 (Popup Board) / Win XP Mode-Right Mouse Button



### C

BIOS Mode-F11 (Popup Board) / Win XP Mode-Right Mouse Button



### Pivot

Pivot Function




# Basic Operation


## Running Virtual Keyboard



### Running the Virtual Keyboard

Press the vilivSoftKeyboard icon on the screen. (You may press the  of the device to run the virtual keyboard.)

### Hiding the Virtual Keyboard

If you press the Hide icon on the virtual keyboard, the keyboard is converted into the  icon.

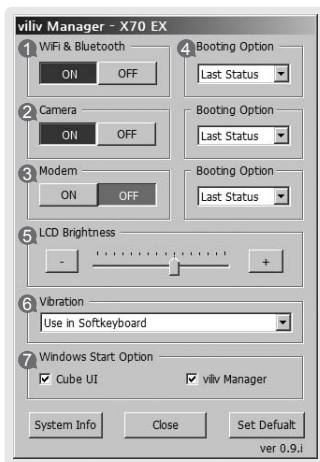
▷ (To return to the original status, press the  icon again.)

### Exiting the Virtual Keyboard.

Press the Virtual Keyboard button on the device to exit the Virtual Keyboard.

## Set Up for viliv Manager

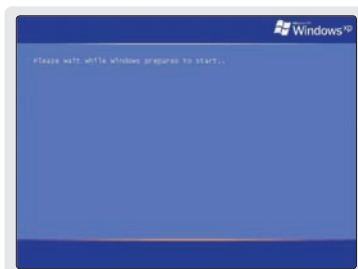
viliv Manager is executed by double touching vilivManager on the screen.



- 1 **Wireless LAN Power**  
Turn on/off self-powered wireless LAN function.
- 2 **Camera Power**  
Turn on/off self-powered Camera function.
- 3 **Modem Power**  
Turn on/off self-powered Modem function.
- 4 **Windows Booting Option**
  1. OFF: Always start with OFF status.
  2. Last Status: Start with the last status.
  3. ON: Always start with ON status.
- 5 **Brightness of LCD**  
Adjust by status bar or -, + button.
- 6 **Setting Vibration**
  1. No Use: Do not use vibration function.
  2. When using soft keyboard: Operate only if soft keyboard is used.
  3. Always Use: Operates when operating for all touches.
- 7 **Set Up for Windows Start Program**
  1. Set whether or not to execute Cube UI automatically.
  2. Set whether or not to execute viliv Manager automatically.

## Using for the First Time

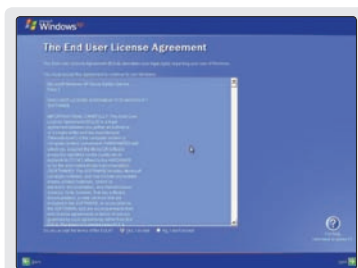
For each Windows installation process, the installation time may vary depending on the process. Please wait until the installation is complete.



- ① Along with the start of Microsoft Windows XP Home, the preparation screen for starting Windows appears as in the following figure.



- ② The Windows start screen for setting up computer appears.  
Click **next** to continue.



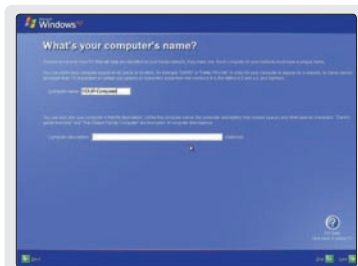
- ③ The agreement for end user's right of use appears on the screen. Read it carefully, and select "**Yes, I agree. (Y)**" if you agree, and then click **next**.



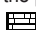
# Using for the First Time

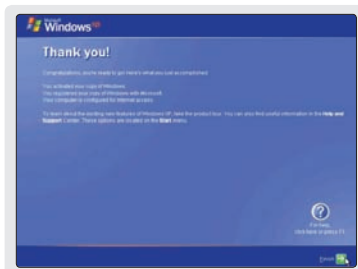


- ④ The screen related to automatic update appears. After the selection, click **next**.



It may take a couple of minutes.  
Please wait for a moment.

- ⑤ The screen to assign the computer name appears. To do this, an external keyboard is needed. If you don't have an external keyboard, you can click **next** to assign the computer name, or you can open the video keyboard on Microsoft Utility Manager by pressing the menu button of the product and the user registration button of  shape on the lower-left corner simultaneously to enter the computer name. Microsoft video keyboard may not support the input of Korean letters. If you want to assign the computer name later, you can assign in computer control **panel** → **system registration information** → **computer name**.



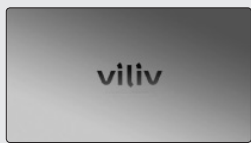
- ⑥ The screen asking "Do you want to register on the internet?" appears. After selecting **Yes** or **No**, click **next**.
- ⑦ The screen showing completion of the installation process appears. Click **next**.
- ⑧ The installation of Microsoft Windows XP Home is complete. Please wait for a moment. The screen for Windows wallpaper will appear shortly.



# Recovery Solution (AMI Rescue) Guide

As an image-based OS recovery solution, it recovers to the initial status of shipment from factory when HDD of user cannot be booted from OS or it has problems.

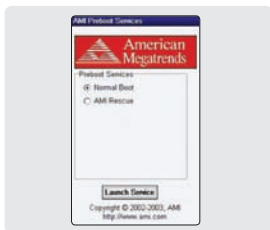
## Way to Use Recovery Solution (AMI Rescue)



### 1 Execution of Recovery Solution (AMI Rescue)

If viliv logo appears when booting the system (BIOS POST), press the select button of product's jog key 1-2 times or F10 key if external keyboard is connected.

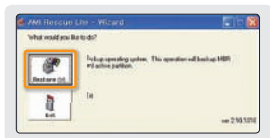
▷ As the logo disappears, Pre-Boot Menu window appears.



### 2 Pre-Boot Menu

When selecting Normal Boot, booting proceeds to Windows. For recovering OS, select AMI Rescue and click Launch Service.

▷ AMI Rescue Lite-Wizard appears.



### 3 AMI Rescue Lite-Wizard

When clicking **Restore OS** button, a message that confirms the recovery of OS is displayed. If you press **Yes (Y)**, it starts the recovery of OS.

If the process of OS recovery is completed, a message that confirms the successful recovery is displayed. (Partition 0 on disk 0 was successfully restored.)

If you press **OK** button, the system is booted again automatically.

▷ Now, if you boot to Windows, OS will be in the initial status of shipment from factory.

## Notice

- When recovering OS, recover by connecting battery adaptor.
- Since data is deleted in case of recovery, make sure to back up the data beforehand.



# Specifications

The specifications below may be changed for enhancement of product performance without prior notice.

## General Specifications

<b>Product Name</b>	X70 EX
<b>CPU &amp; Chipset</b>	Intel® Atom™ 1.2(Z515) / 1.33(Z520) GHz + SCH US15W
<b>LCD</b>	7-type WSVGA(1024 x 600) / Touch panel
<b>RAM</b>	1GB
<b>Storage</b>	SSD 16GB / 32GB / 64GB / 128GB
<b>WWAN(Optional)</b>	WCDMA( HSDPA)
<b>LAN</b>	IEEE 802.11b/g
<b>Bluetooth</b>	Bluetooth Ver2.0 + EDR
<b>GPS(Optional)</b>	SiRF Star III
<b>Connector</b>	Audio x1, USB x1, USB(Link) x1, Multi I/O x1, SD/SDHC Slot x1
<b>Audio</b>	Stereo speakers
<b>Battery</b>	Lithium Polymer (Removable) Voltage: 7.4V Capacity: 4,100mAh
<b>Dimension</b>	210(W) x 117(H) x 22.5(T) mm
<b>Camera</b>	1.3Mega pixel
<b>OS</b>	Windows XP Home Edition
<b>Operation Temperature</b>	0°C ~ 40°C