

YUKYUNG TECHNOLOGIES INC.
200-11, Anyang-Dong, Manan-Ku, Anyang-Si, Kyunggi-Do, Korea
TEL No: +82-31-463-6906 / FAX No: +82-31-445-5995

March 23, 2010
Federal Communications Commission
Authorization and Evaluation Division
1435 Oakland Mills Road
Columbia, MD 21046

**In re: YUKYUNG TECHNOLOGIES INC.
FCC Application for FCC ID:XBQ-S10**

Cover letter

Gentlemen:

The product is approved by TIMCO TCB. We want to add the HSPA module in the product.

The HSPA module is already authorized under FCC ID: QISEM770W.
This module is electrically identical to that originally approved.

We, Yukyung Technologies Inc., will use only WCDMA(HSDPA) Transmitter in the thing to take the approval. This product is not used HSUPA, GSM850 and PCS1900 Band. So we tested the SAR and ERP measurement for WCDMA(HSDPA).

Please refer to the test reports and user's manual.

The transmitters (HSDPA module and WLAN) can not operate simultaneously.
If the Combo module is ON, HSDPA Transmitter is power off automatically. Also If the HSDPA is ON, WLAN is OFF. Refer to the next page.

We will add the label of the module to take the approval on the product.
Please refer to the label location and sample label file.

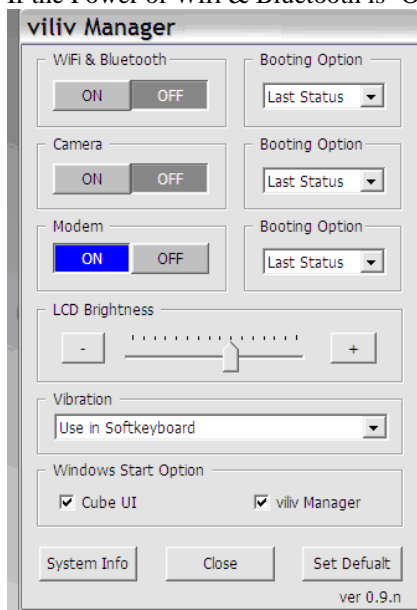
Sincerely,



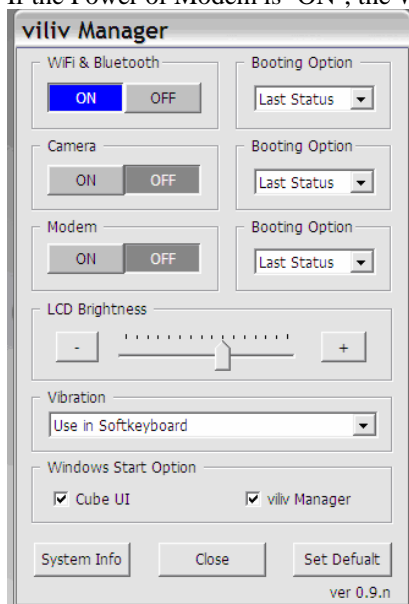
DAVID SEO
Team Manager

About Multiple Transmitters;

This is manager program and control power of WiFi & Bluetooth, Camera and 3G Modem in Product.
If the Power of Wifi & Bluetooth is 'ON', Modem power is selected automatically 'OFF'.



If the Power of Modem is 'ON', the Wifi & Bluetooth power is choose automatically 'OFF'.



User can not choose 'ON' both Wifi & Bluetooth and Modem power.

So, The transmitters (HSDPA module and WLAN) can not operate simultaneously.

And if the Power of Modem is 'ON', it is operate WCDMA(HSDPA) only by softwarely