

YUKYUNG TECHNOLOGIES INC.
200-11, Anyang-Dong, Manan-Ku, Anyang-Si, Kyunggi-Do, Korea
TEL No: +82-31-463-6906 / FAX No: +82-31-445-5995

October 6, 2010
Federal Communications Commission
Authorization and Evaluation Division
1435 Oakland Mills Road
Columbia, MD 21046

In re: YUKYUNG TECHNOLOGIES INC.
FCC Application for FCC ID : XBQ-N5PREMIUM

Cover letter

Gentlemen:

I.

The CDMA module is already authorized under FCC ID: QISEM660.

This module is electrically identical to that originally approved.

I investigated the conducted measurement all of the items shown in the Certified Modular approved Test Report. As for the Modular Characteristics, I examined the Modular Characteristics and the results were the same. Do the same for Occupied Bandwidth; i examined the OBW and results remain the same. Band Edge Compliance was examined and the results are well within limits. Spurious Emissions at the antenna were examined and the results were well within the limits and nearly identical. Frequency Stability was examined and is also per the submitted Test Report. So I substituted approved test report parts of the module Characteristics related to the conducted measurements

II.

The transmitters (CDMA and WLAN) can not operate simultaneous.

If the Combo module is ON, CDMA Transmitter is power off automatically. Also If the CDMA is ON, WLAN is OFF. Refer to the next page.

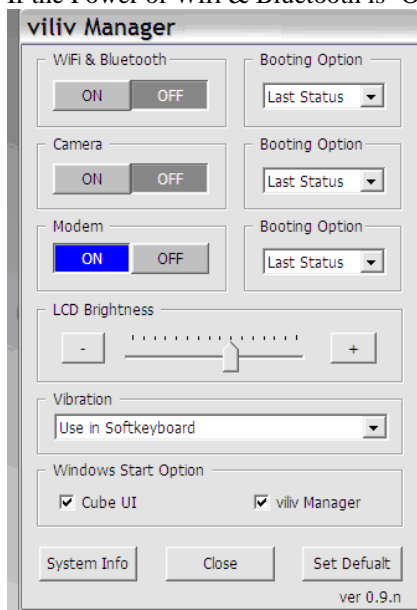
Sincerely,



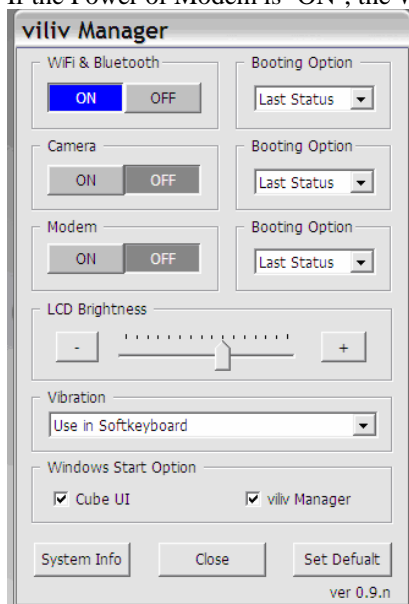
Yun Choul Ham
Director

About Multiple Transmitters;

This is manager program and control power of WiFi & Bluetooth, Camera and 3G Modem in Product.
If the Power of Wifi & Bluetooth is 'ON', Modem power is selected automatically 'OFF'.



If the Power of Modem is 'ON', the Wifi & Bluetooth power is choose automatically 'OFF'.



User can not choose 'ON' both Wifi & Bluetooth and Modem power.
So, The transmitters (CDMA and WLAN) can not operate simultaneous.

And if the Power of Modem is 'ON', it is operate CDMA(EVDO) only by softwarely