

**YUKYUNG TECHNOLOGIES INC.**  
200-11, Anyang-Dong, Manan-Ku, Anyang-Si, Kyunggi-Do, Korea  
TEL No: +82-31-463-6906 / FAX No: +82-31-445-5995

---

October 6, 2010  
Federal Communications Commission  
Authorization and Evaluation Division  
1435 Oakland Mills Road  
Columbia, MD 21046

**In re: YUKYUNG TECHNOLOGIES INC.**  
**FCC Application for FCC ID : XBQ-N5PREMIUM**

Cover letter

Gentlemen:

The CDMA module is already authorized under FCC ID: QISEM660W.  
This module is electrically identical to that originally approved.

The transmitters (CDMA and WLAN) can not operate simultaneous.  
If the Combo module is ON, CDMA Transmitter is power off automatically. Also If the CDMA is ON,  
WLAN is OFF. Refer to the next page.

Sincerely,

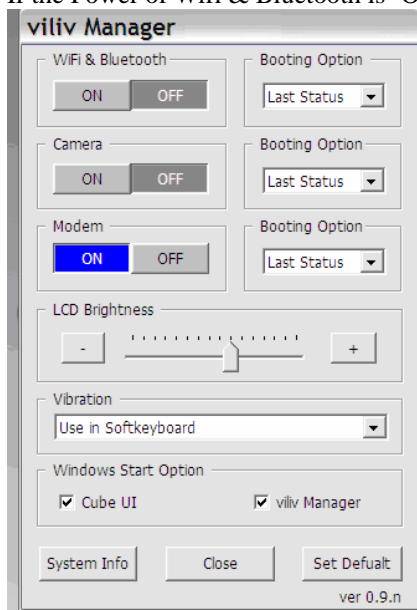


---

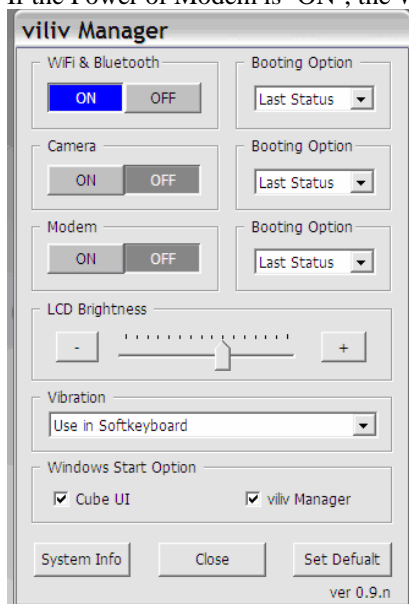
**Yun Choul Ham**  
**Director**

## About Multiple Transmitters;

This is manager program and control power of WiFi & Bluetooth, Camera and 3G Modem in Product.  
If the Power of Wifi & Bluetooth is 'ON', Modem power is selected automatically 'OFF'.



If the Power of Modem is 'ON', the Wifi & Bluetooth power is choose automatically 'OFF'.



User can not choose 'ON' both Wifi & Bluetooth and Modem power.  
So, The transmitters (CDMA and WLAN) can not operate simultaneous.

And if the Power of Modem is 'ON', it is operate CDMA(EVDO) only by softwarely