

TEST REPORT

Product : NAVIGATION MULTIMEDIA
Trade mark : RECEIVER
Model/Type reference : UN1880, UN1880X
Serial Number : N/A
Report Number : EED32K00161901
FCC ID : XBDUN1880
Date of Issue : Jul. 26, 2018
Test Standards : 47 CFR Part 15Subpart C
Test result : PASS

Prepared for:

AAMP of Florida, Inc. dba AAMP Global
15500 Lightwave Dr. Suite 202, Clearwater, FL 33760

Prepared by:

Centre Testing International Group Co., Ltd.
Hongwei Industrial Zone, Bao'an 70 District,
Shenzhen, Guangdong, China
TEL: +86-755-3368 3668
FAX: +86-755-3368 3385

Tested By:

Tom chen
Tom chen (Test Project)

Compiled by:

Max Liang
Max Liang (Project Engineer)

Reviewed by:

Kevin Yang
Kevin yang (Reviewer)

Approved by:

Sheek Luo
Sheek Luo (Lab supervisor)

Date:

Jul. 26, 2018

Check No.:3096305697



2 Version

Version No.	Date	Description
00	Jul. 26, 2018	Original

3 Test Summary

Test Item	Test Requirement	Test method	Result
Antenna Requirement	47 CFR Part 15Subpart C Section 15.203/15.247 (c)	ANSI C63.10-2013	PASS
AC Power Line Conducted Emission	47 CFR Part 15Subpart C Section 15.207	ANSI C63.10-2013	N/A
Conducted Peak Output Power	47 CFR Part 15Subpart C Section 15.247 (b)(3)	ANSI C63.10-2013/ KDB 558074 D01v04	PASS
6dB Occupied Bandwidth	47 CFR Part 15Subpart C Section 15.247 (a)(2)	ANSI C63.10-2013/ KDB 558074 D01v04	PASS
Power Spectral Density	47 CFR Part 15Subpart C Section 15.247 (e)	ANSI C63.10-2013/ KDB 558074 D01v04	PASS
Band-edge for RF Conducted Emissions	47 CFR Part 15Subpart C Section 15.247(d)	ANSI C63.10-2013/ KDB 558074 D01v04	PASS
RF Conducted Spurious Emissions	47 CFR Part 15Subpart C Section 15.247(d)	ANSI C63.10-2013/ KDB 558074 D01v04	PASS
Radiated Spurious Emissions	47 CFR Part 15Subpart C Section 15.205/15.209	ANSI C63.10-2013	PASS
Restricted bands around fundamental frequency (Radiated Emission)	47 CFR Part 15Subpart C Section 15.205/15.209	ANSI C63.10-2013	PASS

Remark:

Test according to ANSI C63.4-2014 & ANSI C63.10-2013.

The tested sample(s) and the sample information are provided by the client.

N/A: The power supply of the tested sample is DC 12V in the vehicle, therefore it is not applicable.

Model No.:UN1880, UN1880X

Only the model of UN1880 is tested, since their electrical circuit design, layout, components used and internal wiring are identical,the shape and the material are identical, only the outer decoration is different.

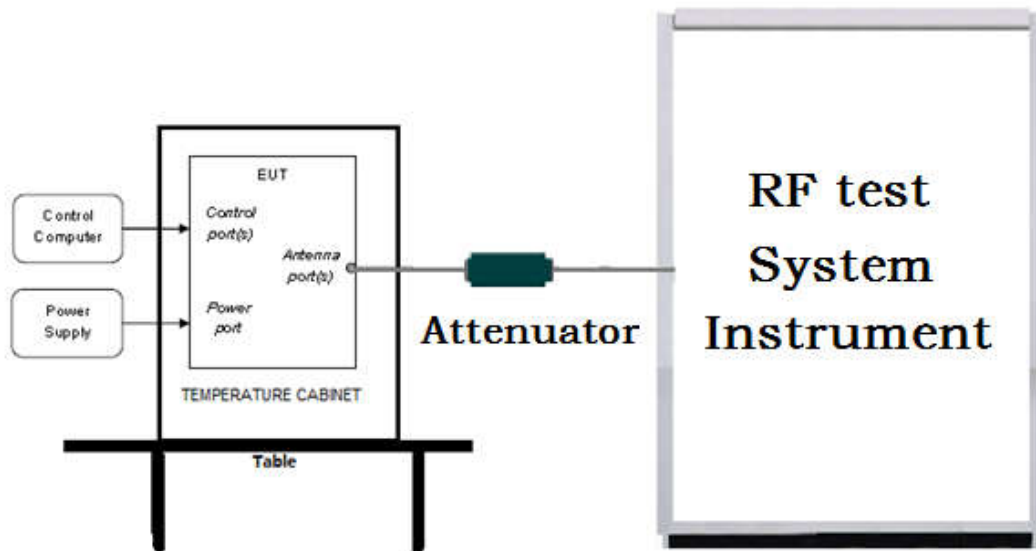
4 Content

1 COVER PAGE	1
2 VERSION	2
3 TEST SUMMARY	3
4 CONTENT	4
5 TEST REQUIREMENT	5
5.1 TEST SETUP	5
5.1.1 For Conducted test setup	5
5.1.2 For Radiated Emissions test setup	5
5.1.3 For Conducted Emissions test setup	6
5.2 TEST ENVIRONMENT	6
5.3 TEST CONDITION	6
6 GENERAL INFORMATION	7
6.1 CLIENT INFORMATION	7
6.2 GENERAL DESCRIPTION OF EUT	7
6.3 PRODUCT SPECIFICATION SUBJECTIVE TO THIS STANDARD	7
6.4 DESCRIPTION OF SUPPORT UNITS	8
6.5 TEST LOCATION	8
6.6 DEVIATION FROM STANDARDS	8
6.7 ABNORMALITIES FROM STANDARD CONDITIONS	8
6.8 OTHER INFORMATION REQUESTED BY THE CUSTOMER	8
6.9 MEASUREMENT UNCERTAINTY (95% CONFIDENCE LEVELS, $K=2$)	9
7 EQUIPMENT LIST	10
8 RADIO TECHNICAL REQUIREMENTS SPECIFICATION	12
Appendix A): 6dB Occupied Bandwidth	13
Appendix B): Conducted Peak Output Power	15
Appendix C): Band-edge for RF Conducted Emissions	17
Appendix D): RF Conducted Spurious Emissions	19
Appendix E): Power Spectral Density	22
Appendix F): Antenna Requirement	24
Appendix G): Restricted bands around fundamental frequency (Radiated)	25
Appendix H): Radiated Spurious Emissions	28
PHOTOGRAPHS OF TEST SETUP	33
PHOTOGRAPHS OF EUT CONSTRUCTIONAL DETAILS	35

5 Test Requirement

5.1 Test setup

5.1.1 For Conducted test setup



5.1.2 For Radiated Emissions test setup

Radiated Emissions setup:

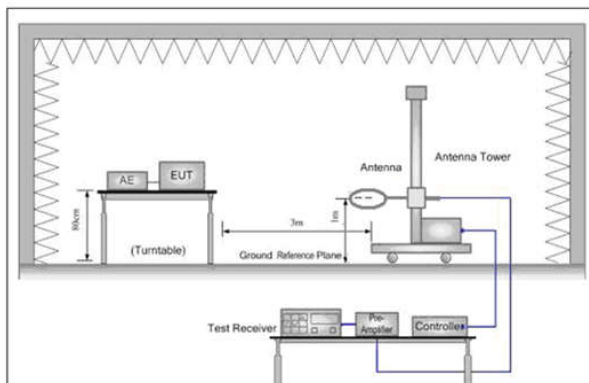


Figure 1. Below 30MHz

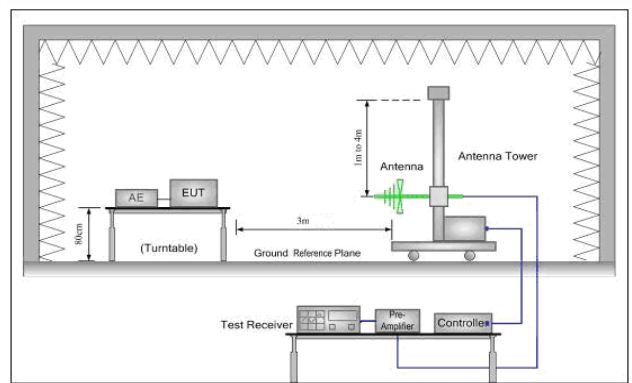


Figure 2. 30MHz to 1GHz

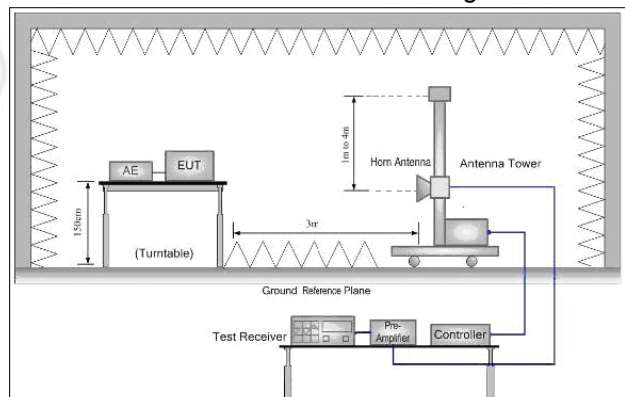
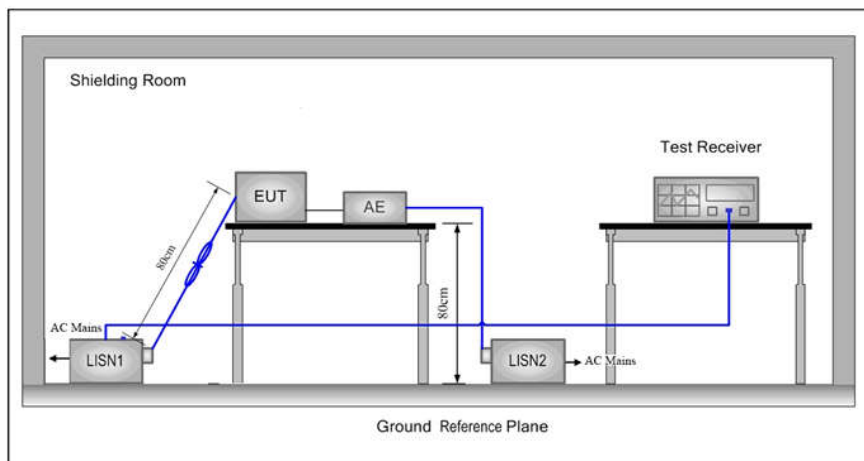


Figure 3. Above 1GHz

5.1.3 For Conducted Emissions test setup

Conducted Emissions setup



5.2 Test Environment

Operating Environment:	
Temperature:	25.9 °C
Humidity:	56 % RH
Atmospheric Pressure:	1010mbar

5.3 Test Condition

Test channel:

Test Mode	Tx/Rx	RF Channel		
		Low(L)	Middle(M)	High(H)
GFSK	2402MHz ~2480 MHz	Channel 1	Channel 20	Channel 40
		2402MHz	2440MHz	2480MHz
TX mode:	The EUT transmitted the continuous signal at the specific channel(s).			

6 General Information

6.1 Client Information

Applicant:	AAMP of Florida, Inc. dba AAMP Global
Address of Applicant:	15500 Lightwave Dr. Suite 202, Clearwater, FL 33760
Manufacturer:	SKYPINE ELECTRONICS (SHEN ZHEN) CO., LTD.
Address of Manufacturer:	A1 Building, No.6, Xinxing Industrial Park, Xinhe Village, Fuyong Town, Bao'an District, Shenzhen City, Guangdong Province, China
Factory:	SKYPINE ELECTRONICS (SHEN ZHEN) CO., LTD.
Address of Factory:	A1 Building, No.6, Xinxing Industrial Park, Xinhe Village, Fuyong Town, Bao'an District, Shenzhen City, Guangdong Province, China

6.2 General Description of EUT

Product Name:	NAVIGATION MULTIMEDIA RECEIVER
Model No.(EUT):	UN1880, UN1880X
Test Model No.:	UN1880
Trade mark:	Stinger
EUT Supports Radios application:	4.2 BT Dual mode, 2402-2480MHz
Power Supply:	Supply by DC 12V
Firmware version:	AJ0107(manufacturer declare)
Hardware version:	R1(manufacturer declare)
Sample Received Date:	Jun. 25, 2018
Sample tested Date:	Jun. 25, 2018 to Jul. 25, 2018

6.3 Product Specification subjective to this standard

Operation Frequency:	2402MHz~2480MHz
Bluetooth Version:	4.2
Modulation Technique:	DSSS
Modulation Type:	GFSK
Number of Channel:	40
Antenna Type and Gain:	Type: 2.4GHz Inverted-F Antenna Gain: 0dBi
Test Voltage:	AC 120V, 60Hz

Operation Frequency each of channel							
Channel	Frequency	Channel	Frequency	Channel	Frequency	Channel	Frequency
1	2402MHz	11	2422MHz	21	2442MHz	31	2462MHz
2	2404MHz	12	2424MHz	22	2444MHz	32	2464MHz
3	2406MHz	13	2426MHz	23	2446MHz	33	2466MHz
4	2408MHz	14	2428MHz	24	2448MHz	34	2468MHz
5	2410MHz	15	2430MHz	25	2450MHz	35	2470MHz
6	2412MHz	16	2432MHz	26	2452MHz	36	2472MHz
7	2414MHz	17	2434MHz	27	2454MHz	37	2474MHz
8	2416MHz	18	2436MHz	28	2456MHz	38	2476MHz
9	2418MHz	19	2438MHz	29	2458MHz	39	2478MHz
10	2420MHz	20	2440MHz	30	2460MHz	40	2480MHz

6.4 Description of Support Units

The EUT has been tested independently.

6.5 Test Location

All tests were performed at:

Centre Testing International Group Co., Ltd

Building C, Hongwei Industrial Park Block 70, Bao'an District, Shenzhen, China

Telephone: +86 (0) 755 33683668 Fax: +86 (0) 755 33683385

No tests were sub-contracted.

FCC Designation No.: CN1164

6.6 Deviation from Standards

None.

6.7 Abnormalities from Standard Conditions

None.

6.8 Other Information Requested by the Customer

None.

6.9 Measurement Uncertainty (95% confidence levels, k=2)

No.	Item	Measurement Uncertainty
1	Radio Frequency	7.9×10^{-8}
2	RF power, conducted	0.31dB (30MHz-1GHz)
		0.57dB (1GHz-18GHz)
3	Radiated Spurious emission test	4.5dB (30MHz-1GHz)
		4.8dB (1GHz-12.75GHz)
4	Conduction emission	3.6dB (9kHz to 150kHz)
		3.2dB (150kHz to 30MHz)
5	Temperature test	0.64°C
6	Humidity test	2.8%
7	DC power voltages	0.025%

7 Equipment List

RF test system					
Equipment	Manufacturer	Model No.	Serial Number	Cal. Date (mm-dd-yyyy)	Cal. Due date (mm-dd-yyyy)
Signal Generator	Keysight	E8257D	MY53401106	03-13-2018	03-12-2019
Spectrum Analyzer	Keysight	N9010A	MY54510339	03-13-2018	03-12-2019
Signal Generator	Keysight	N5182B	MY53051549	03-13-2018	03-12-2019
High-pass filter	Sinoscite	FL3CX03WG18 NM12-0398-002	---	01-10-2018	01-09-2019
power meter & power sensor	R&S	OSP120	101374	04-11-2018	04-10-2019
RF control unit	JS Tonscend	JS0806-2	2015860006	03-13-2018	03-12-2019

Conducted disturbance Test					
Equipment	Manufacturer	Model No.	Serial Number	Cal. date (mm-dd-yyyy)	Cal. Due date (mm-dd-yyyy)
Receiver	R&S	ESCI	100009	05-25-2018	05-24-2019
Temperature/ Humidity Indicator	Belida	TT-512	A19	01-24-2018	01-23-2019
LISN	R&S	ENV216	100098	05-11-2018	05-10-2019

3M Semi/full-anechoic Chamber					
Equipment	Manufacturer	Model No.	Serial Number	Cal. date (mm-dd-yyyy)	Cal. Due date (mm-dd-yyyy)
3M Chamber & Accessory Equipment	TDK	SAC-3	---	06-04-2016	06-03-2019
TRILOG Broadband Antenna	SCHWARZBECK	VULB9163	9163-484	06-05-2018	06-04-2019
Microwave Preamplifier	Tonscend	EMC051845SE	980380	01-19-2018	01-18-2019
Horn Antenna	ETS-LINDGREN	3117	00057407	07-12-2015 07-10-2018	07-10-2018 07-08-2021
Double Ridge Horn Antenna	A.H.SYSTEMS	SAS-574	374	06-07-2015 06-05-2018	06-05-2018 06-03-2021
Loop Antenna	ETS	6502	00071730	06-22-2017	06-21-2019
Spectrum Analyzer	R&S	FSP40	100416	05-11-2018	05-10-2019
Receiver	R&S	ESCI	100435	05-25-2018	05-24-2019
LISN	schwarzbeck	NNBM8125	81251547	05-11-2018	05-10-2019
LISN	schwarzbeck	NNBM8125	81251548	05-11-2018	05-10-2019
Signal Generator	Agilent	E4438C	MY45095744	03-13-2018	03-12-2019
Signal Generator	Keysight	E8257D	MY53401106	03-13-2018	03-12-2019
Temperature/ Humidity Indicator	TAYLOR	1451	1905	05-02-2018	05-01-2019
Communication test set	Agilent	E5515C	GB47050534	03-16-2018	03-15-2019
Cable line	Fulai(7M)	SF106	5219/6A	01-10-2018	01-09-2019
Cable line	Fulai(6M)	SF106	5220/6A	01-10-2018	01-09-2019
Cable line	Fulai(3M)	SF106	5216/6A	01-10-2018	01-09-2019
Cable line	Fulai(3M)	SF106	5217/6A	01-10-2018	01-09-2019
Communication test set	R&S	CMW500	152394	03-16-2018	03-15-2019
High-pass filter	Sinoscite	FL3CX03WG18NM1 2-0398-002	---	01-10-2018	01-09-2019
band rejection filter	Sinoscite	FL5CX01CA09CL12 -0395-001	---	01-10-2018	01-09-2019
band rejection filter	Sinoscite	FL5CX01CA08CL12 -0393-001	---	01-10-2018	01-09-2019
band rejection filter	Sinoscite	FL5CX02CA04CL12 -0396-002	---	01-10-2018	01-09-2019
band rejection filter	Sinoscite	FL5CX02CA03CL12 -0394-001	---	01-10-2018	01-09-2019

8 Radio Technical Requirements Specification

Reference documents for testing:

No.	Identity	Document Title
1	FCC Part15C	Subpart C-Intentional Radiators
2	ANSI C63.10-2013	American National Standard for Testing Unlicensed Wireless Devices

Test Results List:

Test Requirement	Test method	Test item	Verdict	Note
Part15C Section 15.247 (a)(2)	ANSI C63.10	6dB Occupied Bandwidth	PASS	Appendix A)
Part15C Section 15.247 (b)(3)	ANSI C63.10	Conducted Peak Output Power	PASS	Appendix B)
Part15C Section 15.247(d)	ANSI C63.10	Band-edge for RF Conducted Emissions	PASS	Appendix C)
Part15C Section 15.247(d)	ANSI C63.10	RF Conducted Spurious Emissions	PASS	Appendix D)
Part15C Section 15.247 (e)	ANSI C63.10	Power Spectral Density	PASS	Appendix E)
Part15C Section 15.203/15.247 (c)	ANSI C63.10	Antenna Requirement	PASS	Appendix F)
Part15C Section 15.207	ANSI C63.10	AC Power Line Conducted Emission	PASS	Appendix G)
Part15C Section 15.205/15.209	ANSI C63.10	Restricted bands around fundamental frequency (Radiated Emission)	PASS	Appendix H)
Part15C Section 15.205/15.209	ANSI C63.10	Radiated Spurious Emissions	PASS	Appendix I)

Appendix A): 6dB Occupied Bandwidth

Test Result

Mode	Channel	6dB Bandwidth [MHz]	99% OBW[MHz]	Verdict	Remark
BLE	LCH	0.6933	1.0451	PASS	Peak detector
BLE	MCH	0.6885	1.0378	PASS	
BLE	HCH	0.6892	1.0472	PASS	

Test Graphs

Graphs	
LCH	<p>Keyight Spectrum Analyzer - Occupied BW</p> <p>Center Freq 2.402000000 GHz</p> <p>Ref Offset 19.08 dB Ref 15.00 dBm</p> <p>Center 2.402 GHz #Res BW 100 kHz #VBW 300 kHz Span 3 MHz Sweep 1.067 ms</p> <p>Occupied Bandwidth 1.0451 MHz</p> <p>Total Power 11.4 dBm</p> <p>Transmit Freq Error 2.921 kHz</p> <p>OBW Power 99.00 %</p> <p>x dB Bandwidth 693.3 kHz</p> <p>x dB -6.00 dB</p>
MCH	<p>Keyight Spectrum Analyzer - Occupied BW</p> <p>Center Freq 2.440000000 GHz</p> <p>Ref Offset 19.02 dB Ref 15.00 dBm</p> <p>Center 2.44 GHz #Res BW 100 kHz #VBW 300 kHz Span 3 MHz Sweep 1.067 ms</p> <p>Occupied Bandwidth 1.0378 MHz</p> <p>Total Power 13.2 dBm</p> <p>Transmit Freq Error -5.386 kHz</p> <p>OBW Power 99.00 %</p> <p>x dB Bandwidth 688.5 kHz</p> <p>x dB -6.00 dB</p>
HCH	<p>Keyight Spectrum Analyzer - Occupied BW</p> <p>Center Freq 2.480000000 GHz</p> <p>Ref Offset 19.05 dB Ref 29.05 dBm</p> <p>Center 2.48 GHz #Res BW 100 kHz #VBW 300 kHz Span 3 MHz Sweep 1.067 ms</p> <p>Occupied Bandwidth 1.0472 MHz</p> <p>Total Power 13.5 dBm</p> <p>Transmit Freq Error -2.715 kHz</p> <p>OBW Power 99.00 %</p> <p>x dB Bandwidth 689.2 kHz</p> <p>x dB -6.00 dB</p>

Appendix B): Conducted Peak Output Power

Test Result

Mode	Channel	Conduct Peak Power[dBm]	Verdict
BLE	LCH	5.084	PASS
BLE	MCH	6.775	PASS
BLE	HCH	7.102	PASS

Test Graphs

Graphs	
LCH	<p>Keynote Spectrum Analyzer - Sweep SA Center Freq 2.402000000 GHz Ref Offset 19.08 dB Ref 19.08 dBm Mkr1 2.402 297 GHz 5.084 dBm Center 2.40200 GHz #Res BW 3.0 MHz #VBW 8.0 MHz Sweep 1.067 ms (8001 pts) Span 25.00 MHz</p>
MCH	<p>Keynote Spectrum Analyzer - Sweep SA Center Freq 2.440000000 GHz Ref Offset 19.02 dB Ref 19.02 dBm Mkr1 2.439 978 GHz 6.775 dBm Center 2.44000 GHz #Res BW 3.0 MHz #VBW 8.0 MHz Sweep 1.067 ms (8001 pts) Span 25.00 MHz</p>
HCH	<p>Keynote Spectrum Analyzer - Sweep SA Center Freq 2.480000000 GHz Ref Offset 19.05 dB Ref 19.05 dBm Mkr1 2.479 909 GHz 7.102 dBm Center 2.48000 GHz #Res BW 3.0 MHz #VBW 8.0 MHz Sweep 1.067 ms (8001 pts) Span 25.00 MHz</p>

Appendix C): Band-edge for RF Conducted Emissions

Result Table

Mode	Channel	Carrier Power[dBm]	Max.Spurious Level [dBm]	Limit [dBm]	Verdict
BLE	LCH	4.846	-61.318	-15.15	PASS
BLE	HCH	7.052	-52.840	-12.95	PASS

Test Graphs



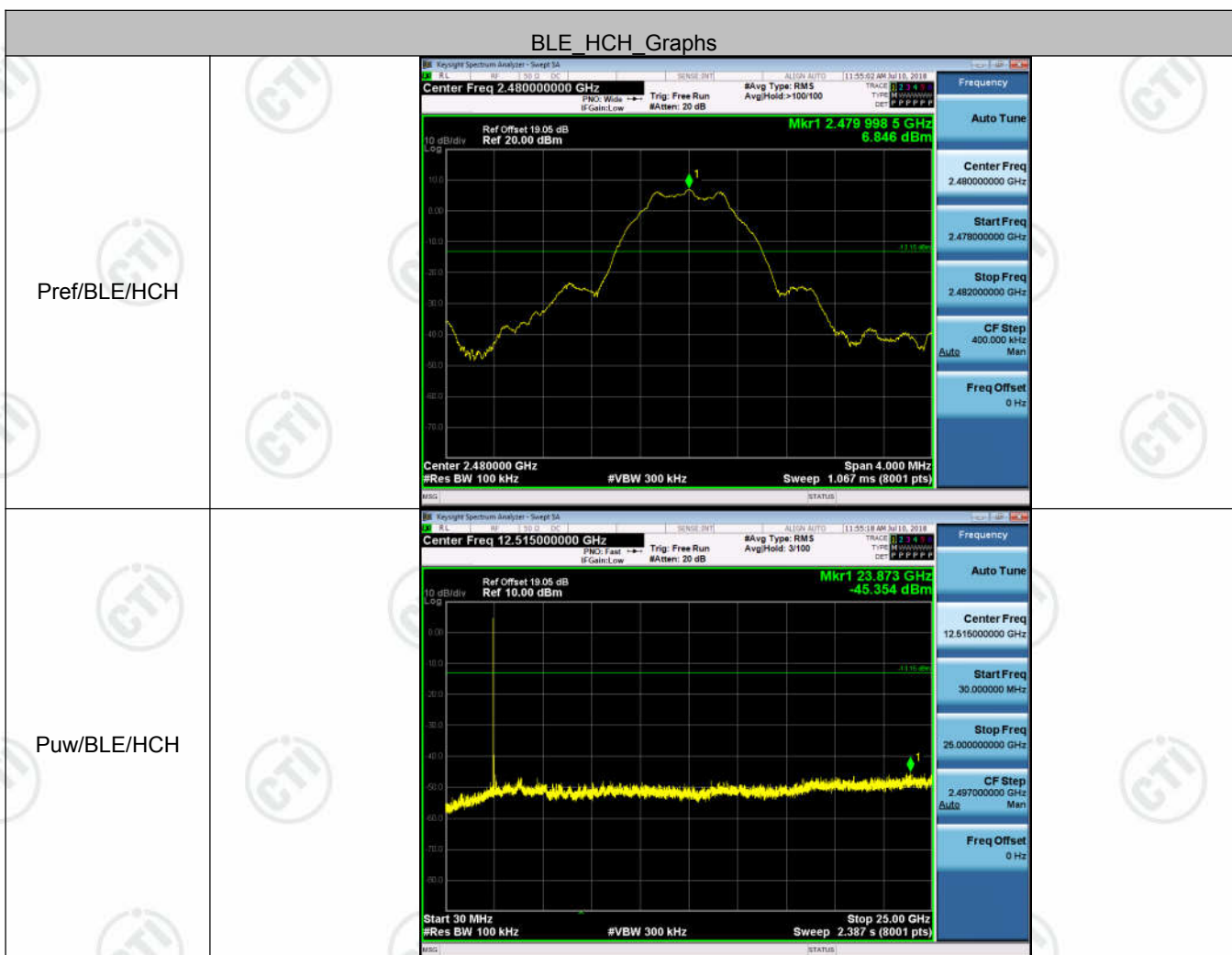
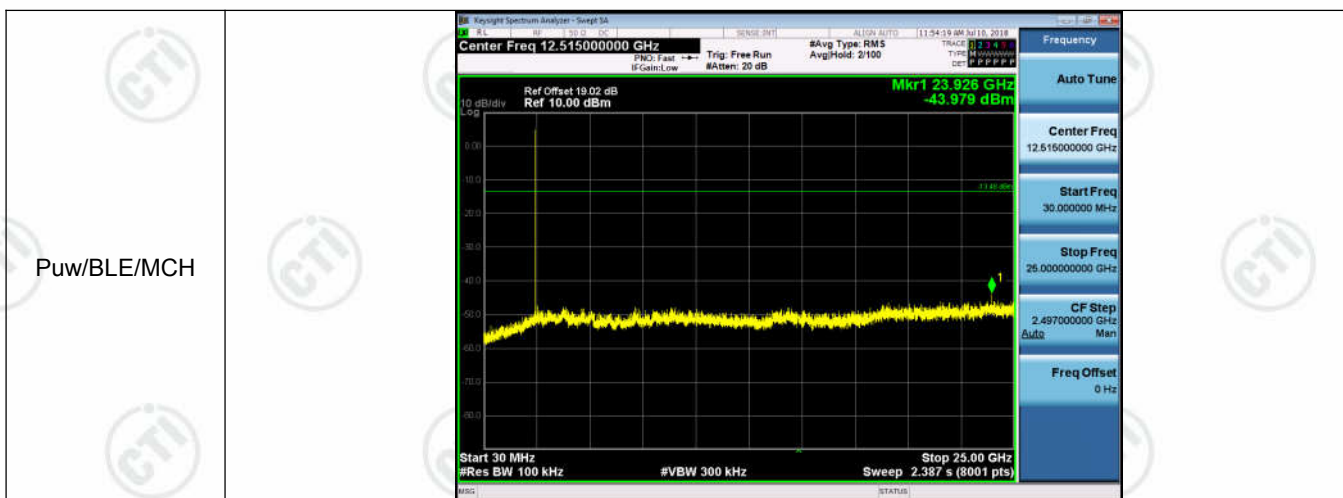
Appendix D): RF Conducted Spurious Emissions

Result Table

Mode	Channel	Pref [dBm]	Puw[dBm]	Verdict
BLE	LCH	4.75	<Limit	PASS
BLE	MCH	6.524	<Limit	PASS
BLE	HCH	6.846	<Limit	PASS

Test Graphs



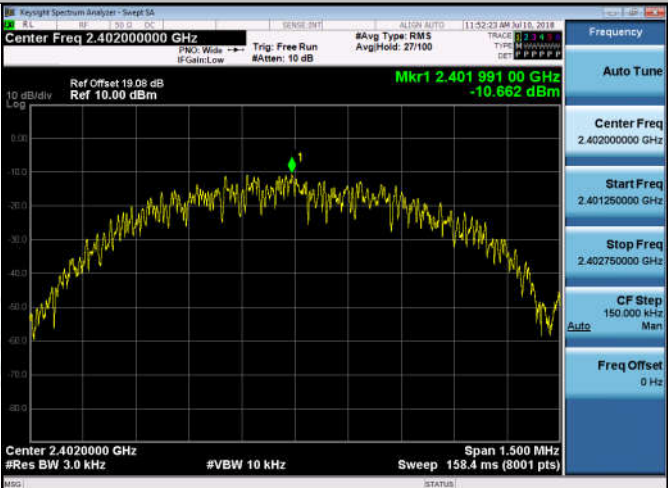




Appendix E): Power Spectral Density

Result Table

Mode	Channel	PSD [dBm/3kHz]	Limit [dBm/3kHz]	Verdict
BLE	LCH	-10.662	8	PASS
BLE	MCH	-8.682	8	PASS
BLE	HCH	-8.115	8	PASS

Test Graphs

Graphs	
LCH	
MCH	
HCH	

Appendix F): Antenna Requirement

15.203 requirement:

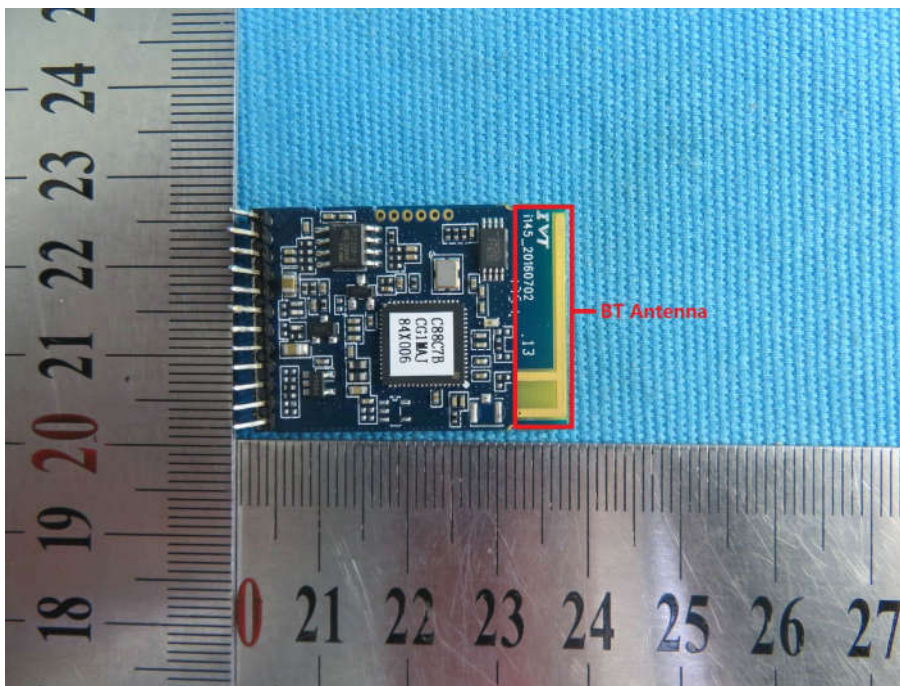
An intentional radiator shall be designed to ensure that no antenna other than that furnished by the responsible party shall be used with the device. The use of a permanently attached antenna or of an antenna that uses a unique coupling to the intentional radiator, the manufacturer may design the unit so that a broken antenna can be replaced by the user, but the use of a standard antenna jack or electrical connector is prohibited.

15.247(b) (4) requirement:

The conducted output power limit specified in paragraph (b) of this section is based on the use of antennas with directional gains that do not exceed 6 dBi. Except as shown in paragraph (c) of this section, if transmitting antennas of directional gain greater than 6 dBi are used, the conducted output power from the intentional radiator shall be reduced below the stated values in paragraphs (b)(1), (b)(2), and (b)(3) of this section, as appropriate, by the amount in dB that the directional gain of the antenna exceeds 6 dBi.

EUT Antenna:

The antenna is 2.4GHz Inverted-F Antenna and no consideration of replacement. The best case gain of the antenna is 0dBi.

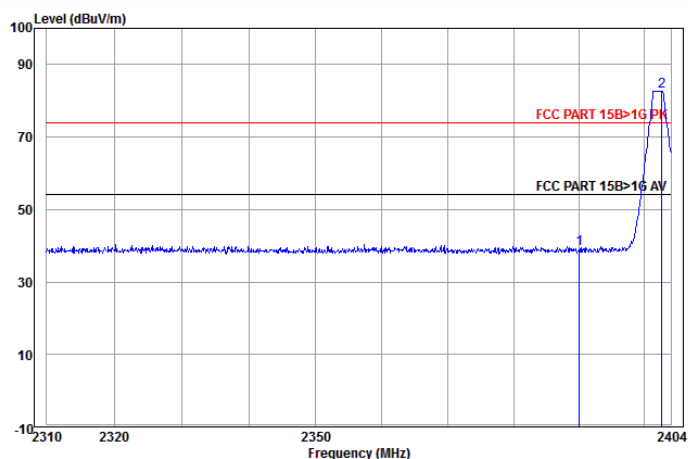


Appendix G): Restricted bands around fundamental frequency (Radiated)

Receiver Setup:	Frequency	Detector	RBW	VBW	Remark
	30MHz-1GHz	Quasi-peak	120kHz	300kHz	Quasi-peak
	Above 1GHz	Peak	1MHz	3MHz	Peak
		Peak	1MHz	10Hz	Average
Test Procedure:	<p>Below 1GHz test procedure as below:</p> <ol style="list-style-type: none"> The EUT was placed on the top of a rotating table 0.8 meters above the ground at a 3 meter semi-anechoic chamber. The table was rotated 360 degrees to determine the position of the highest radiation. The EUT was set 3 meters away from the interference-receiving antenna, which was mounted on the top of a variable-height antenna tower. The antenna height is varied from one meter to four meters above the ground to determine the maximum value of the field strength. Both horizontal and vertical polarizations of the antenna are set to make the measurement. For each suspected emission, the EUT was arranged to its worst case and then the antenna was tuned to heights from 1 meter to 4 meters and the rotatable was turned from 0 degrees to 360 degrees to find the maximum reading. The test-receiver system was set to Peak Detect Function and Specified Bandwidth with Maximum Hold Mode. Place a marker at the end of the restricted band closest to the transmit frequency to show compliance. Also measure any emissions in the restricted bands. Save the spectrum analyzer plot. Repeat for each power and modulation for lowest and highest channel <p>Above 1GHz test procedure as below:</p> <ol style="list-style-type: none"> Different between above is the test site, change from Semi- Anechoic Chamber to fully Anechoic Chamber change form table 0.8 meter to 1.5 meter(Above 18GHz the distance is 1 meter and table is 1.5 meter). . Test the EUT in the lowest channel , the Highest channel The radiation measurements are performed in X, Y, Z axis positioning for Transmitting mode, and found the X axis positioning which it is worse case. Repeat above procedures until all frequencies measured was complete. 				
Limit:	Frequency	Limit (dBμV/m @3m)		Remark	
	30MHz-88MHz	40.0		Quasi-peak Value	
	88MHz-216MHz	43.5		Quasi-peak Value	
	216MHz-960MHz	46.0		Quasi-peak Value	
	960MHz-1GHz	54.0		Quasi-peak Value	
	Above 1GHz	54.0		Average Value	
		74.0		Peak Value	

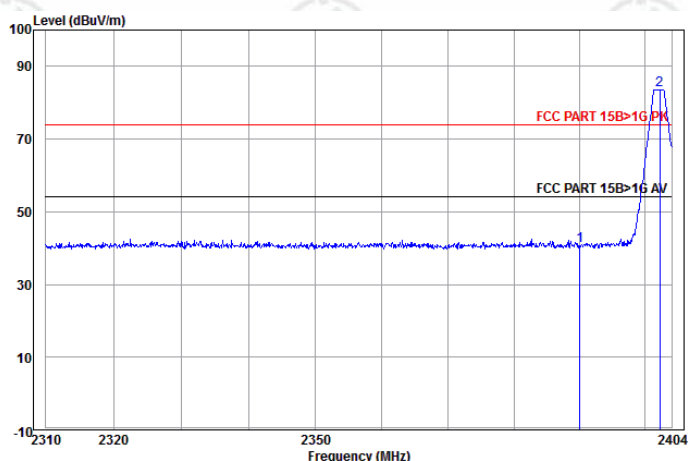
Test plot as follows:

Worse case mode:	GFSK		
Frequency: 2390.0MHz	Test channel: Lowest	Polarization: Horizontal	Remark: Peak



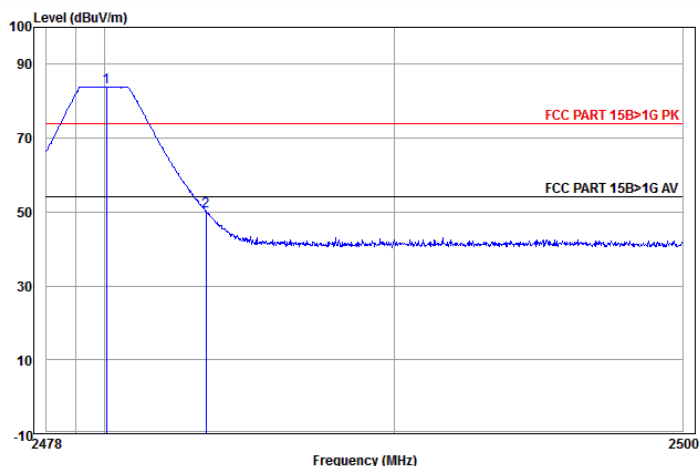
	Ant Freq	Cable Factor	Preamp Loss	Read Level	Level	Limit Line	Over Limit	Pol/Phase	Remark
	MHz	dB/m	dB	dB	dBuV	dBuV/m	dBuV/m	dB	
1	2390.000	32.53	3.07	44.03	47.44	39.01	74.00	-34.99	Horizontal Peak
2 pp	2402.658	32.56	3.08	44.04	90.99	82.59	74.00	8.59	Horizontal Peak

Worse case mode:	GFSK		
Frequency: 2390.0MHz	Test channel: Lowest	Polarization: Vertical	Remark: Peak



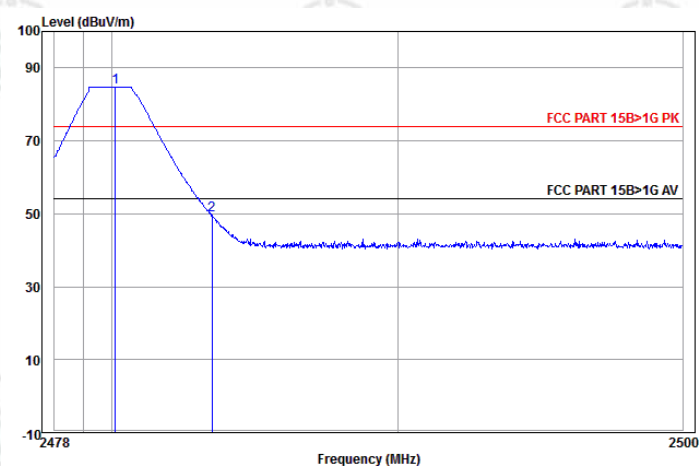
	Ant Freq	Cable Factor	Preamp Loss	Read Level	Level	Limit Line	Over Limit	Pol/Phase	Remark
	MHz	dB/m	dB	dB	dBuV	dBuV/m	dBuV/m	dB	
1	2390.000	32.53	3.07	44.03	49.13	40.70	74.00	-33.30	Vertical Peak
2 pp	2402.179	32.56	3.07	44.04	92.00	83.59	74.00	9.59	Vertical Peak

Worse case mode:	GFSK		
Frequency: 2483.5MHz	Test channel: Highest	Polarization: Horizontal	Remark: Peak



	Ant Freq	Ant Factor	Cable Loss	Preamp Factor	Read Level	Level	Limit Line	Over Limit	Pol/Phase	Remark
	MHz	dB/m	dB	dB	dBuV	dBuV/m	dBuV/m	dB		
1 pp	2480.060	32.71	3.12	44.14	92.00	83.69	74.00	9.69	Horizontal	Peak
2	2483.500	32.71	3.12	44.14	58.54	50.23	74.00	-23.77	Horizontal	Peak

Worse case mode:	GFSK		
Frequency: 2483.5MHz	Test channel: Highest	Polarization: Vertical	Remark: Peak



	Ant Freq	Ant Factor	Cable Loss	Preamp Factor	Read Level	Level	Limit Line	Over Limit	Pol/Phase	Remark
	MHz	dB/m	dB	dB	dBuV	dBuV/m	dBuV/m	dB		
1 pp	2480.125	32.71	3.12	44.14	93.00	84.69	74.00	10.69	Vertical	Peak
2	2483.500	32.71	3.12	44.14	57.82	49.51	74.00	-24.49	Vertical	Peak

Note:

1) The field strength is calculated by adding the Antenna Factor, Cable Factor & Preamplifier. The basic equation with a sample calculation is as follows:

Final Test Level = Receiver Reading - Correct Factor

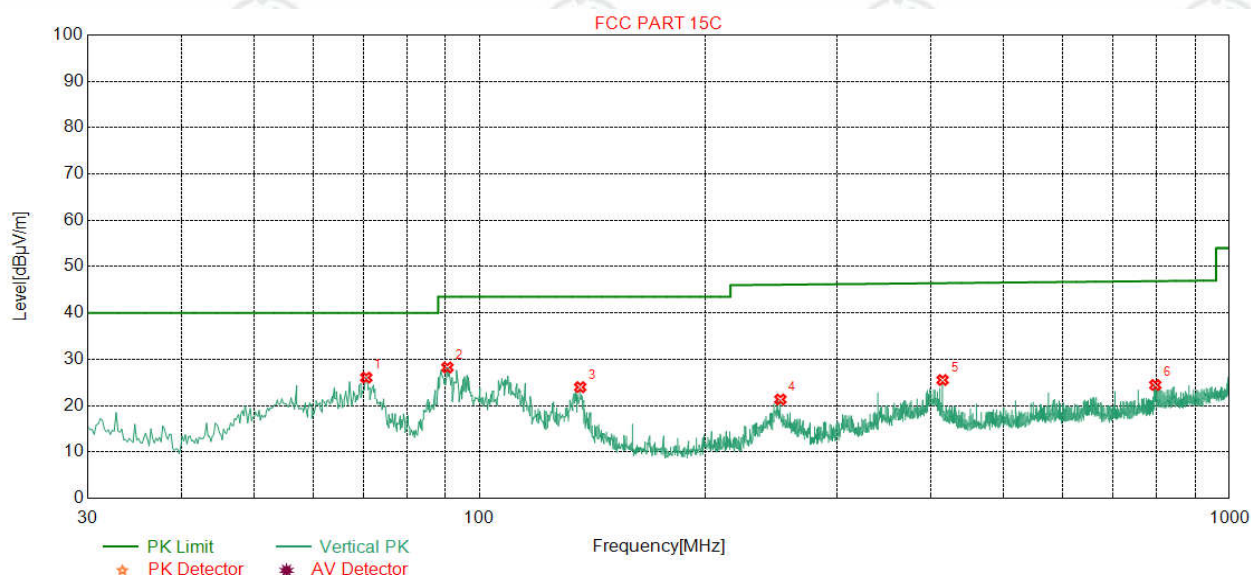
Correct Factor = Preamplifier Factor - Antenna Factor - Cable Factor

Appendix H): Radiated Spurious Emissions

Receiver Setup:	Frequency	Detector	RBW	VBW	Remark
	0.009MHz-0.090MHz	Peak	10kHz	30kHz	Peak
	0.009MHz-0.090MHz	Average	10kHz	30kHz	Average
	0.090MHz-0.110MHz	Quasi-peak	10kHz	30kHz	Quasi-peak
	0.110MHz-0.490MHz	Peak	10kHz	30kHz	Peak
	0.110MHz-0.490MHz	Average	10kHz	30kHz	Average
	0.490MHz -30MHz	Quasi-peak	10kHz	30kHz	Quasi-peak
	30MHz-1GHz	Quasi-peak	120kHz	300kHz	Quasi-peak
	Above 1GHz	Peak	1MHz	3MHz	Peak
Peak		1MHz	10Hz	Average	
Test Procedure:					
Below 1GHz test procedure as below:					
<p>a. The EUT was placed on the top of a rotating table 0.8 meters above the ground at a 3 meter semi-anechoic camber. The table was rotated 360 degrees to determine the position of the highest radiation.</p> <p>b. The EUT was set 3 meters away from the interference-receiving antenna, which was mounted on the top of a variable-height antenna tower.</p> <p>c. The antenna height is varied from one meter to four meters above the ground to determine the maximum value of the field strength. Both horizontal and vertical polarizations of the antenna are set to make the measurement.</p> <p>d. For each suspected emission, the EUT was arranged to its worst case and then the antenna was tuned to heights from 1 meter to 4 meters (for the test frequency of below 30MHz, the antenna was tuned to heights 1 meter) and the rotatable was turned from 0 degrees to 360 degrees to find the maximum reading.</p> <p>e. The test-receiver system was set to Peak Detect Function and Specified Bandwidth with Maximum Hold Mode.</p> <p>f. If the emission level of the EUT in peak mode was 10dB lower than the limit specified, then testing could be stopped and the peak values of the EUT would be reported. Otherwise the emissions that did not have 10dB margin would be re-tested one by one using peak, quasi-peak or average method as specified and then reported in a data sheet.</p>					
Above 1GHz test procedure as below:					
<p>g. Different between above is the test site, change from Semi- Anechoic Chamber to fully Anechoic Chamber and change form table 0.8 meter to 1.5 meter(Above 18GHz the distance is 1 meter and table is 1.5 meter).</p> <p>h. Test the EUT in the lowest channel ,the middle channel ,the Highest channel</p> <p>i. The radiation measurements are performed in X, Y, Z axis positioning for Transmitting mode, and found the X axis positioning which it is worse case.</p> <p>j. Repeat above procedures until all frequencies measured was complete.</p>					
Limit:	Frequency	Field strength (microvolt/meter)	Limit (dBμV/m)	Remark	Measurement distance (m)
	0.009MHz-0.490MHz	2400/F(kHz)	-	-	300
	0.490MHz-1.705MHz	24000/F(kHz)	-	-	30
	1.705MHz-30MHz	30	-	-	30
	30MHz-88MHz	100	40.0	Quasi-peak	3
	88MHz-216MHz	150	43.5	Quasi-peak	3
	216MHz-960MHz	200	46.0	Quasi-peak	3
	960MHz-1GHz	500	54.0	Quasi-peak	3
	Above 1GHz	500	54.0	Average	3
Note: 15.35(b), Unless otherwise specified, the limit on peak radio frequency emissions is 20dB above the maximum permitted average emission limit applicable to the equipment under test. This peak limit applies to the total peak emission level radiated by the device.					

Radiated Spurious Emissions test Data: Radiated Emission below 1GHz

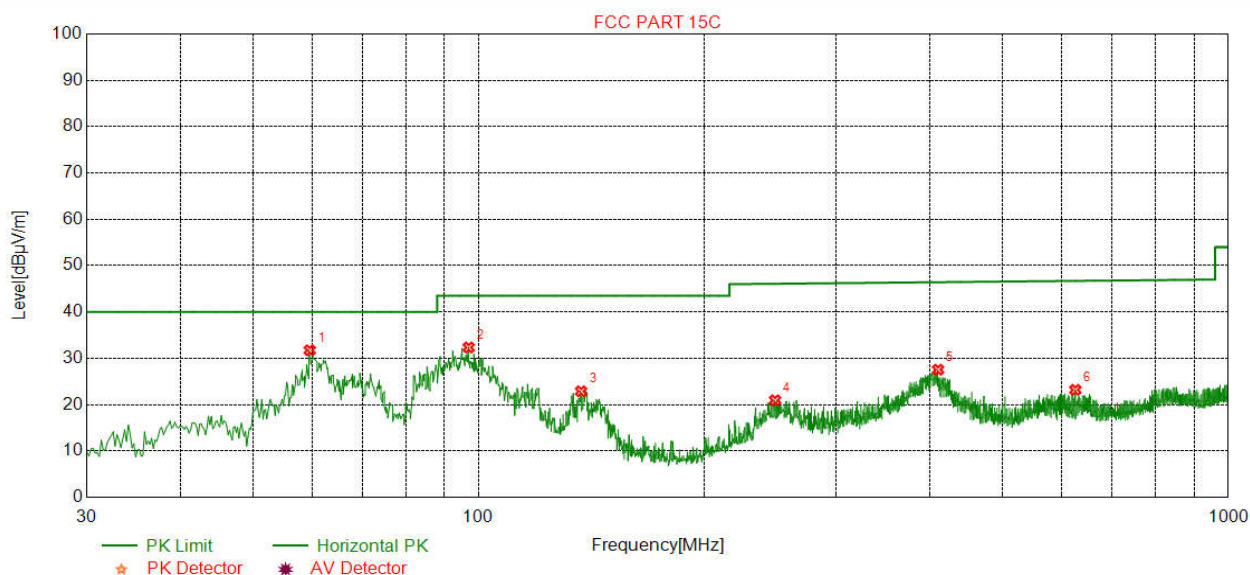
30MHz~1GHz (QP)		
Test mode:	Transmitting	Vertical



Suspected List

NO.	Freq. [MHz]	Reading [dBμV/m]	Level [dBμV/m]	Factor [dB]	Limit [dBμV/m]	Margin [dB]	Polarity
1	70.5541	48.26	26.06	-22.20	40.00	13.94	Vertical
2	90.5401	49.74	28.24	-21.50	43.50	15.26	Vertical
3	136.1392	47.23	23.99	-23.24	43.50	19.51	Vertical
4	251.7864	39.11	21.34	-17.77	46.00	24.66	Vertical
5	414.3909	39.31	25.53	-13.78	46.00	20.47	Vertical
6	796.4533	32.22	24.45	-7.77	46.00	21.55	Vertical

Test mode:	Transmitting	Horizontal
------------	--------------	------------



Suspected List

NO.	Freq. [MHz]	Reading [dBμV/m]	Level [dBμV/m]	Factor [dB]	Limit [dBμV/m]	Margin [dB]	Polarity
1	59.4939	51.21	31.74	-19.47	40.00	8.26	Horizontal
2	96.9434	52.76	32.34	-20.42	43.50	11.16	Horizontal
3	136.9154	46.15	22.88	-23.27	43.50	20.62	Horizontal
4	248.4877	38.81	20.94	-17.87	46.00	25.06	Horizontal
5	409.9280	41.40	27.54	-13.86	46.00	18.46	Horizontal
6	624.9230	33.00	23.19	-9.81	46.00	22.81	Horizontal

Transmitter Emission above 1GHz

Worse case mode:		GFSK	Test channel:		Lowest	Remark: Peak	
NO.	Freq. [MHz]	Reading [dBμV/m]	Level [dBμV/m]	Factor [dB]	Limit [dBμV/m]	Margin [dB]	Polarity
1	4804.0000	43.55	44.16	0.61	74.00	29.84	Horizontal
2	7206.0000	38.04	44.23	6.19	74.00	29.77	Horizontal
3	8433.2433	41.33	49.51	8.18	74.00	24.49	Horizontal
4	9608.0000	39.39	48.05	8.66	74.00	25.95	Horizontal
5	11171.3171	38.08	50.01	11.93	74.00	23.99	Horizontal
6	12010.0000	33.84	45.00	11.16	74.00	29.00	Horizontal
1	4804.0000	42.37	42.98	0.61	74.00	31.02	Vertical
2	5760.5011	41.67	43.93	2.26	74.00	30.07	Vertical
3	7206.0000	37.51	43.70	6.19	74.00	30.30	Vertical
4	8372.7873	40.88	48.78	7.90	74.00	25.22	Vertical
5	9608.0000	38.67	47.33	8.66	74.00	26.67	Vertical
6	12010.0000	33.79	44.95	11.16	74.00	29.05	Vertical

Worse case mode:		GFSK	Test channel:		Middle	Remark: Peak	
NO.	Freq. [MHz]	Reading [dBμV/m]	Level [dBμV/m]	Factor [dB]	Limit [dBμV/m]	Margin [dB]	Polarity
1	3404.6655	42.45	39.81	-2.64	74.00	34.19	Horizontal
2	4880.0000	45.01	46.07	1.06	74.00	27.93	Horizontal
3	7320.0000	38.05	44.50	6.45	74.00	29.50	Horizontal
4	8822.3072	40.82	48.95	8.13	74.00	25.05	Horizontal
5	9760.0000	39.88	48.72	8.84	74.00	25.28	Horizontal
6	12200.0000	34.97	46.38	11.41	74.00	27.62	Horizontal
1	3190.1440	45.76	42.97	-2.79	74.00	31.03	Vertical
2	4880.0000	45.41	46.47	1.06	74.00	27.53	Vertical
3	7320.0000	37.44	43.89	6.45	74.00	30.11	Vertical
4	8463.4713	40.94	49.12	8.18	74.00	24.88	Vertical
5	9760.0000	39.75	48.59	8.84	74.00	25.41	Vertical
6	12200.0000	34.17	45.58	11.41	74.00	28.42	Vertical

Worse case mode:		GFSK	Test channel:		Highest	Remark: Peak	
NO.	Freq. [MHz]	Reading [dBμV/m]	Level [dBμV/m]	Factor [dB]	Limit [dBμV/m]	Margin [dB]	Polarity
1	3101.4101	42.21	39.37	-2.84	74.00	34.63	Horizontal
2	4960.000	41.33	42.46	1.13	74.00	31.54	Horizontal
3	7440.000	35.71	42.38	6.67	74.00	31.62	Horizontal
4	9920.000	37.26	46.27	9.01	74.00	27.73	Horizontal
5	11146.9397	38.25	50.18	11.93	74.00	23.82	Horizontal
6	12400.000	34.14	45.54	11.40	74.00	28.46	Horizontal
1	3136.5137	44.78	41.75	-3.03	74.00	32.25	Vertical
2	4960.000	44.87	46.00	1.13	74.00	28.00	Vertical
3	7440.000	37.06	43.73	6.67	74.00	30.27	Vertical
4	9920.000	36.80	45.81	9.01	74.00	28.19	Vertical
5	11010.4260	38.87	50.91	12.04	74.00	23.09	Vertical
6	12400.000	35.48	46.88	11.40	74.00	27.12	Vertical

Note:

1) The field strength is calculated by adding the Antenna Factor, Cable Factor & Preamplifier. The basic equation with a sample calculation is as follows:

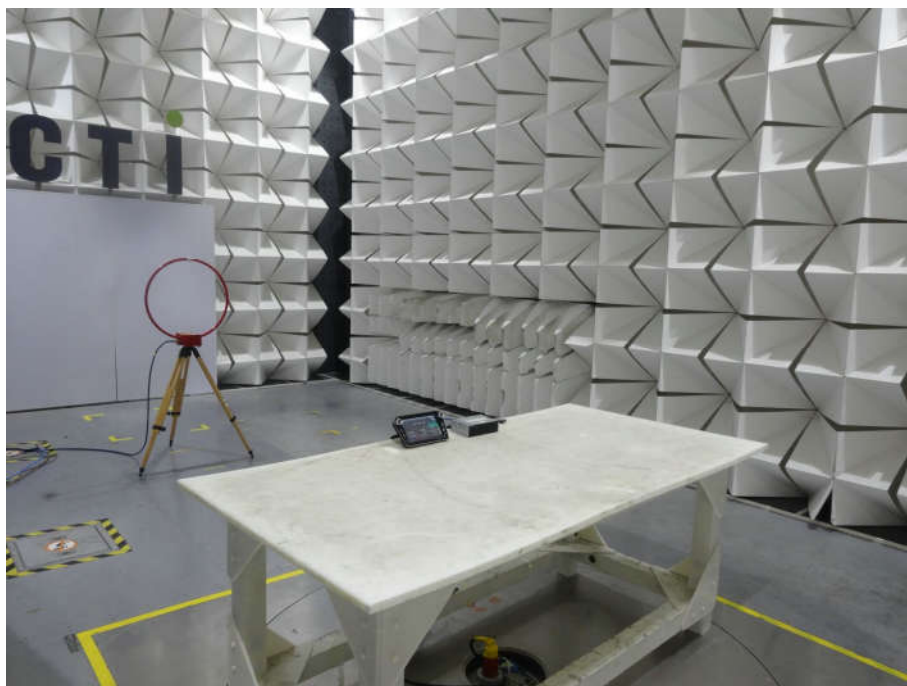
Final Test Level = Receiver Reading - Correct Factor

Correct Factor = Preamplifier Factor - Antenna Factor - Cable Factor

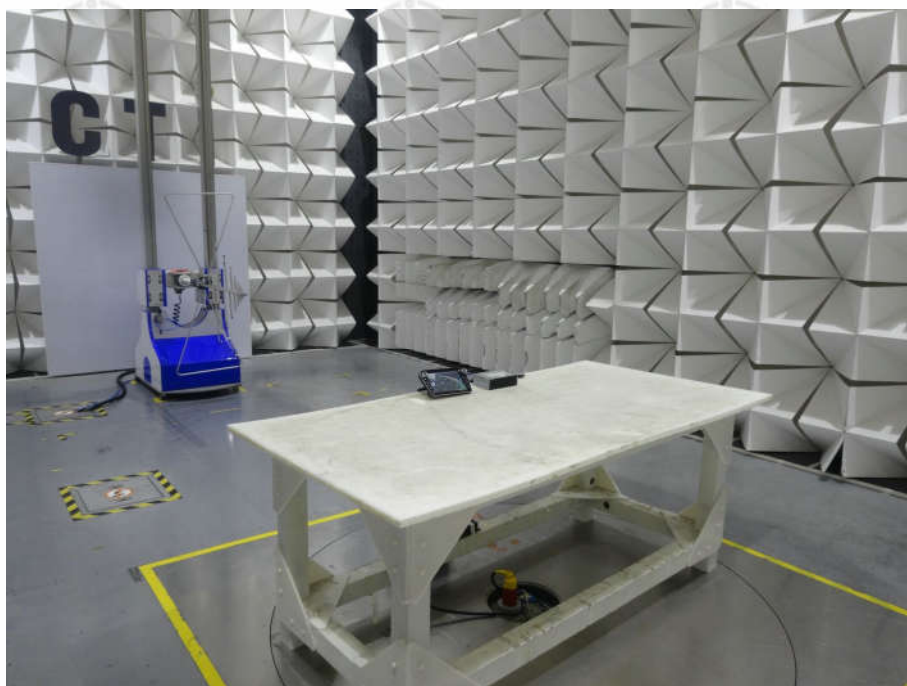
2) Scan from 9kHz to 25GHz, the disturbance above 13GHz and below 30MHz was very low, and the above harmonics were the highest point could be found when testing, so only the above harmonics had been displayed. The amplitude of spurious emissions from the radiator which are attenuated more than 20dB below the limit need not be reported.

PHOTOGRAPHS OF TEST SETUP

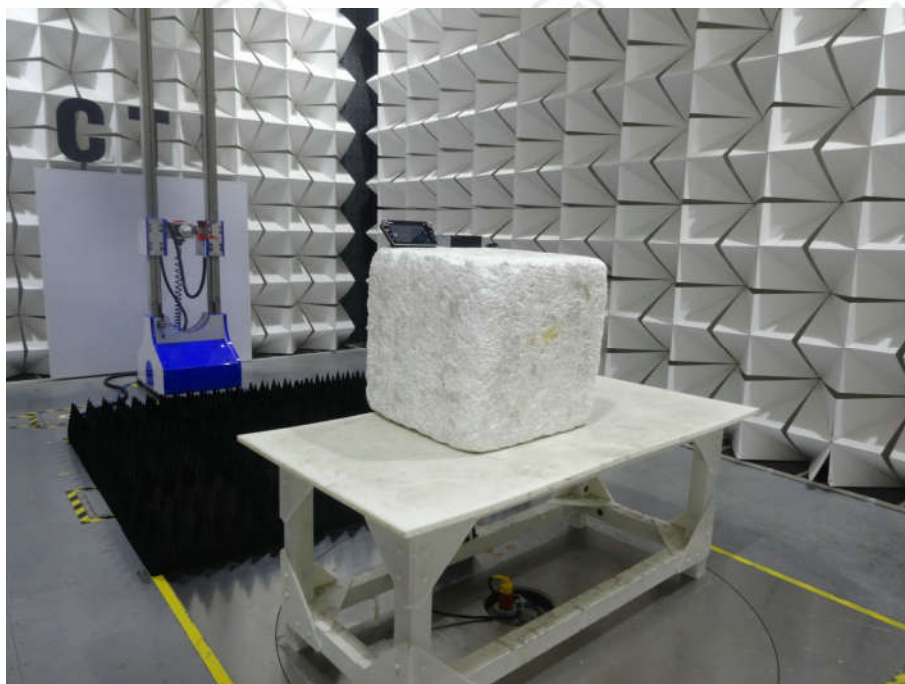
Test model No.: UN1880



Radiated spurious emission Test Setup-1(9K-30M)



Radiated spurious emission Test Setup-2(30-1G)



Radiated spurious emission Test Setup-3(Above 1GHz)

PHOTOGRAPHS OF EUT Constructional Details

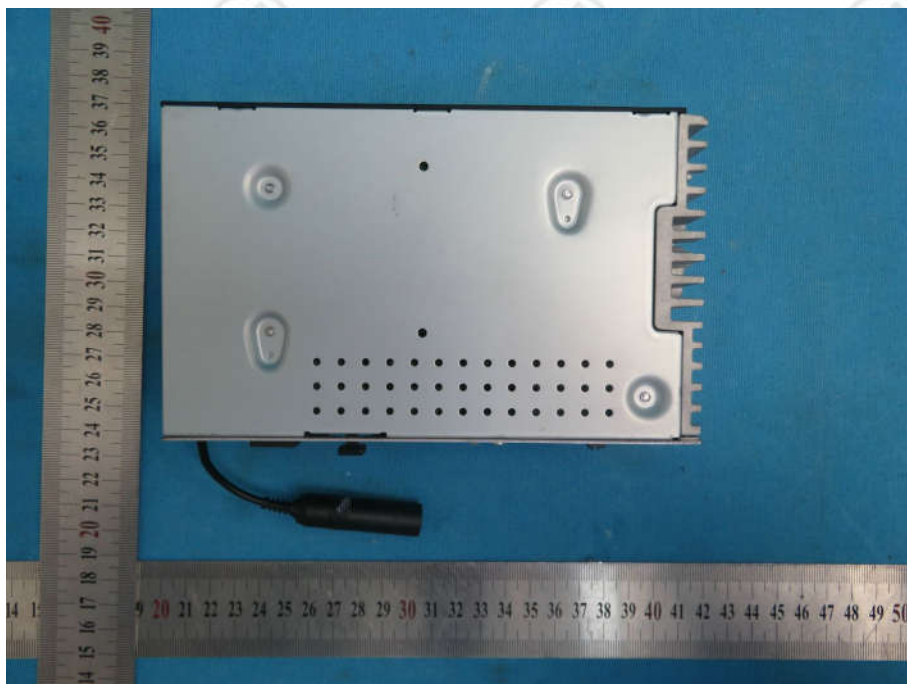
Test model No.: UN1880



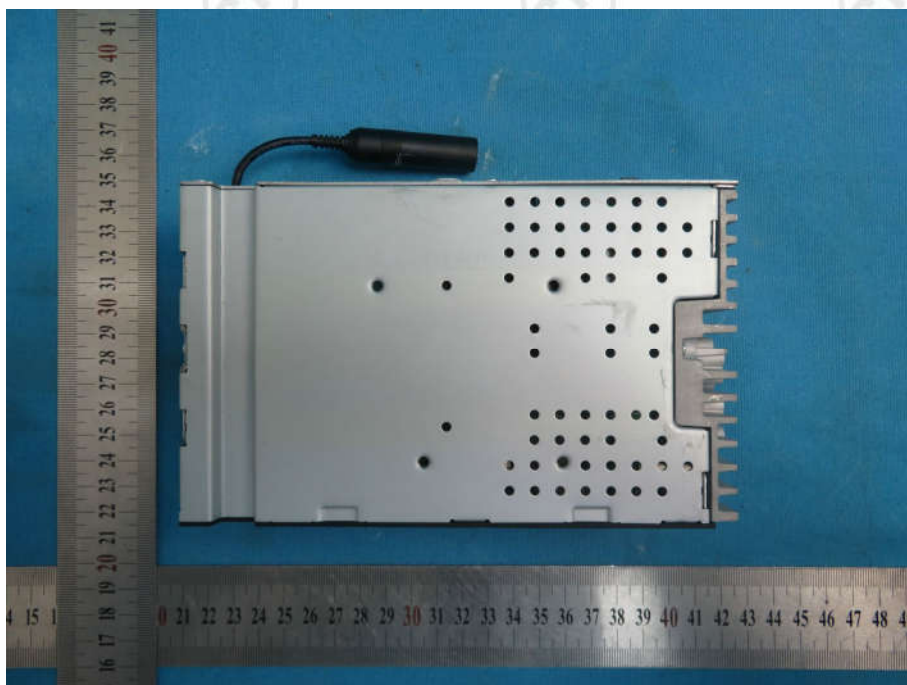
View of Product-1



View of Product-2



View of Product-3



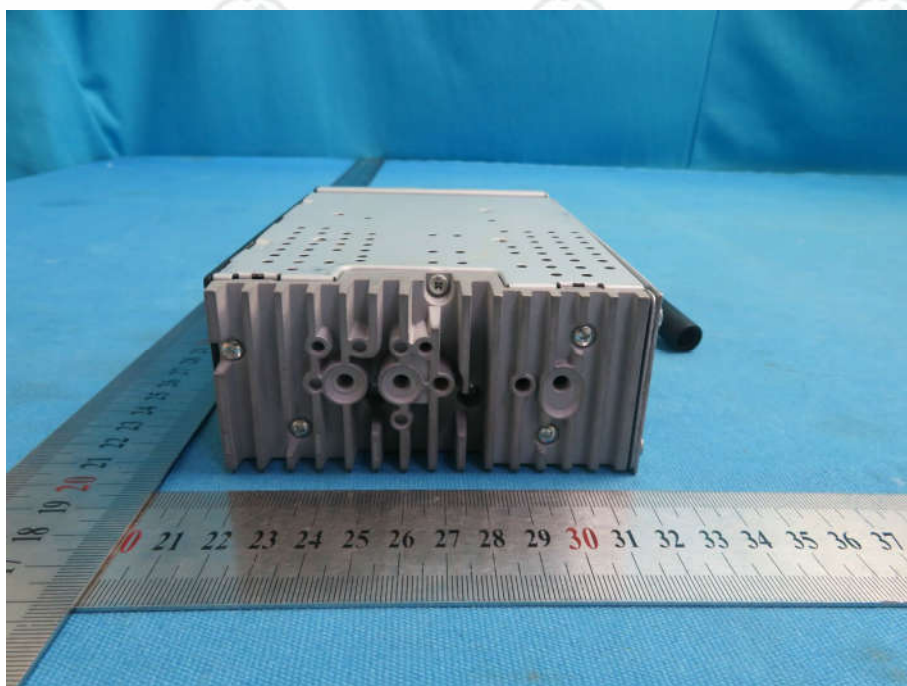
View of Product-4



View of Product-5



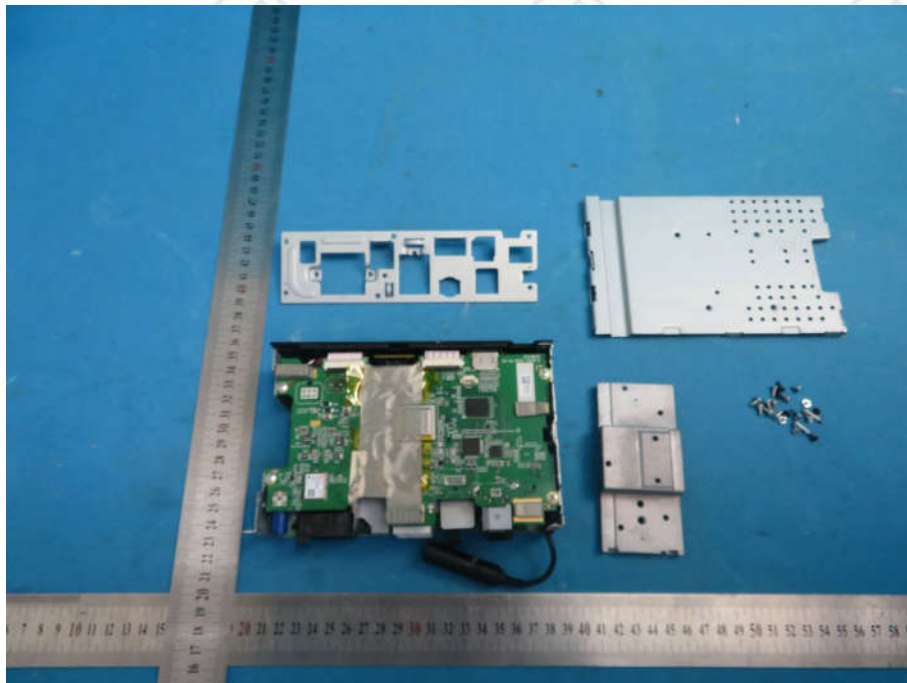
View of Product-6



View of Product-7



View of Product-8



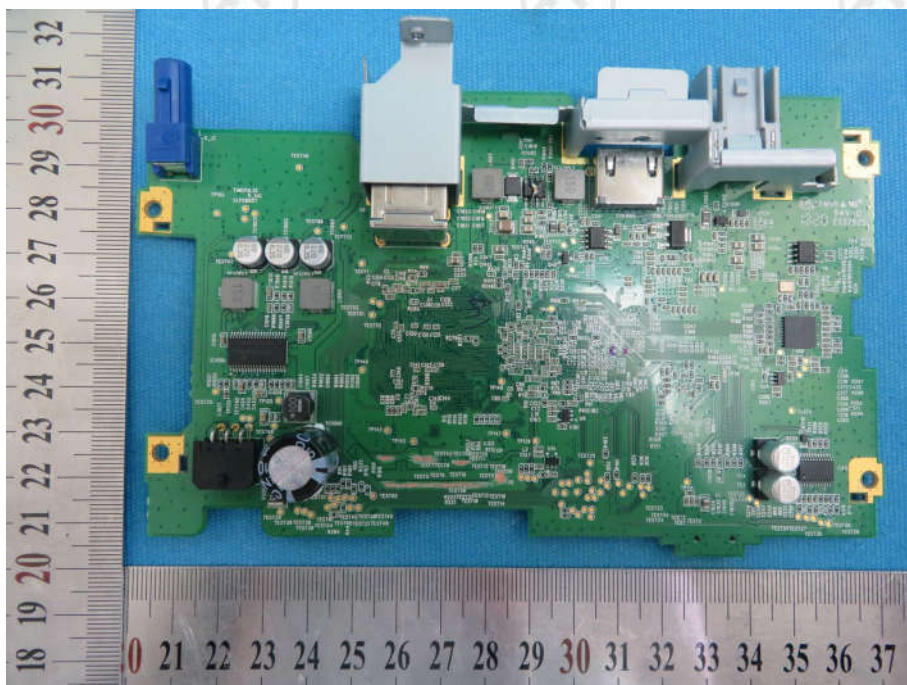
View of Product-9



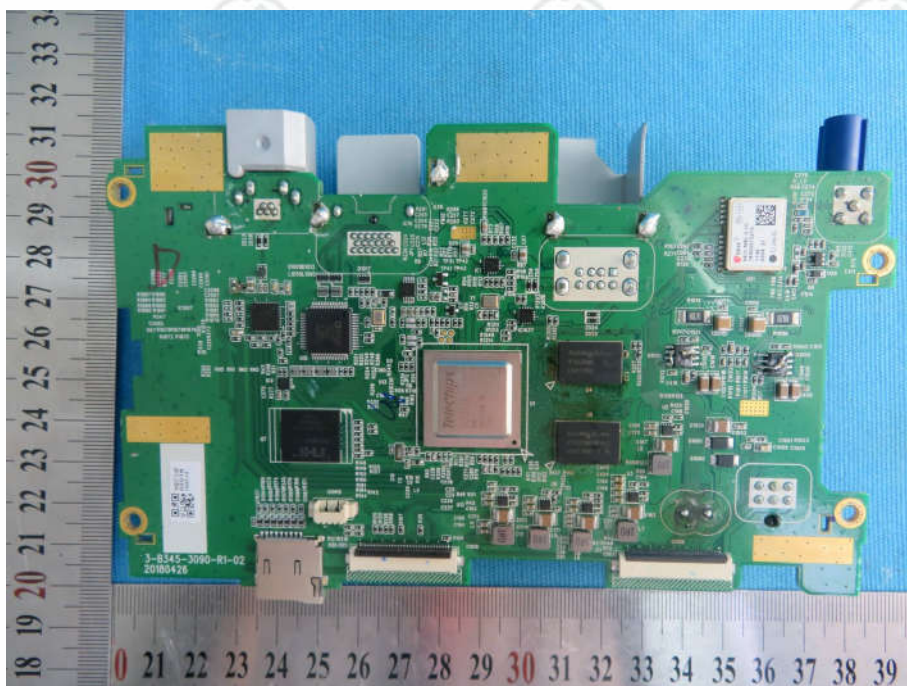
View of Product-10



View of Product-11



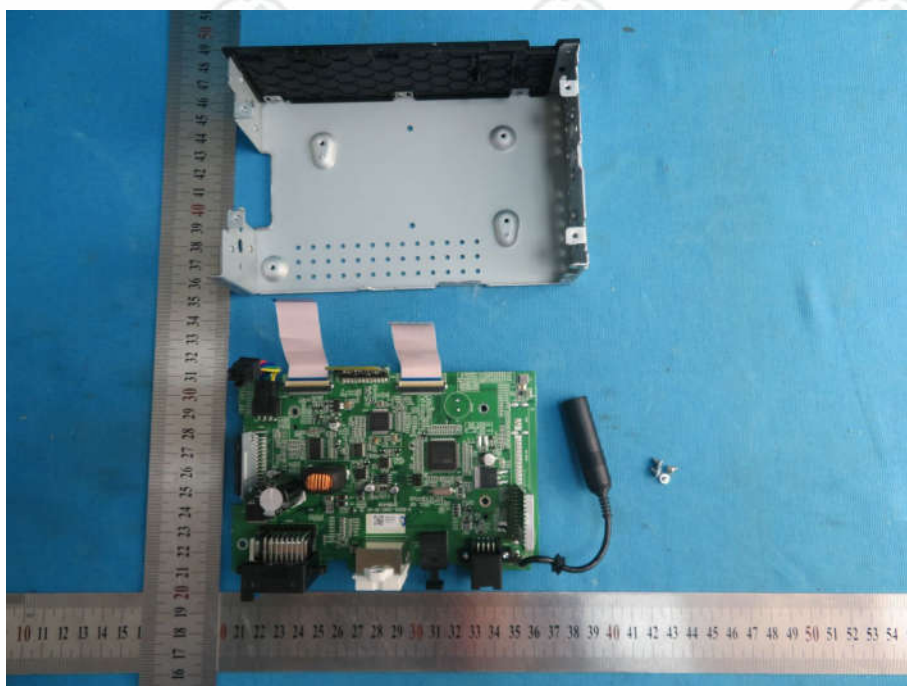
View of Product-12



View of Product-13



View of Product-14



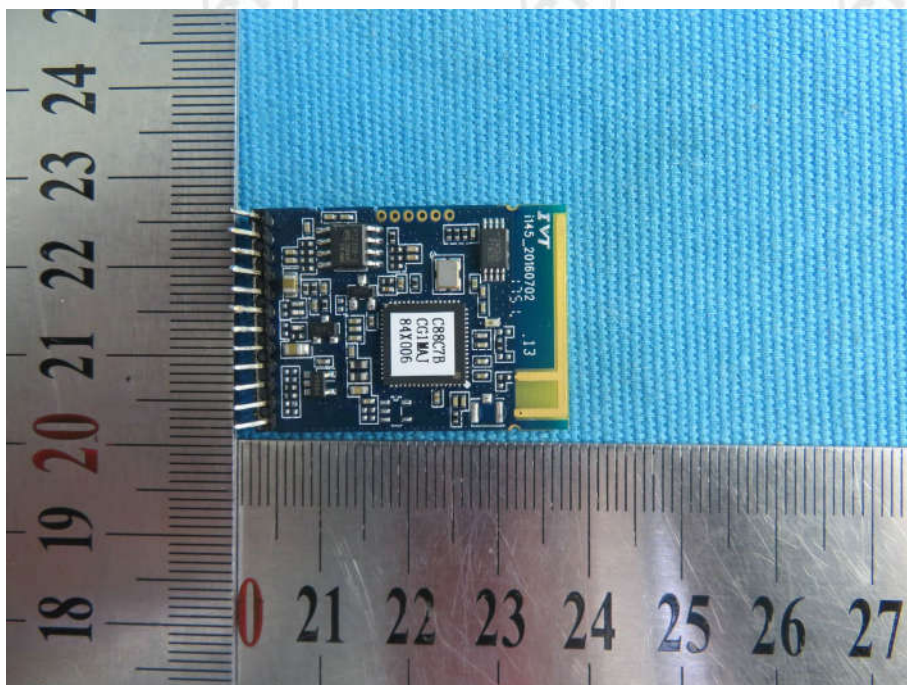
View of Product-15



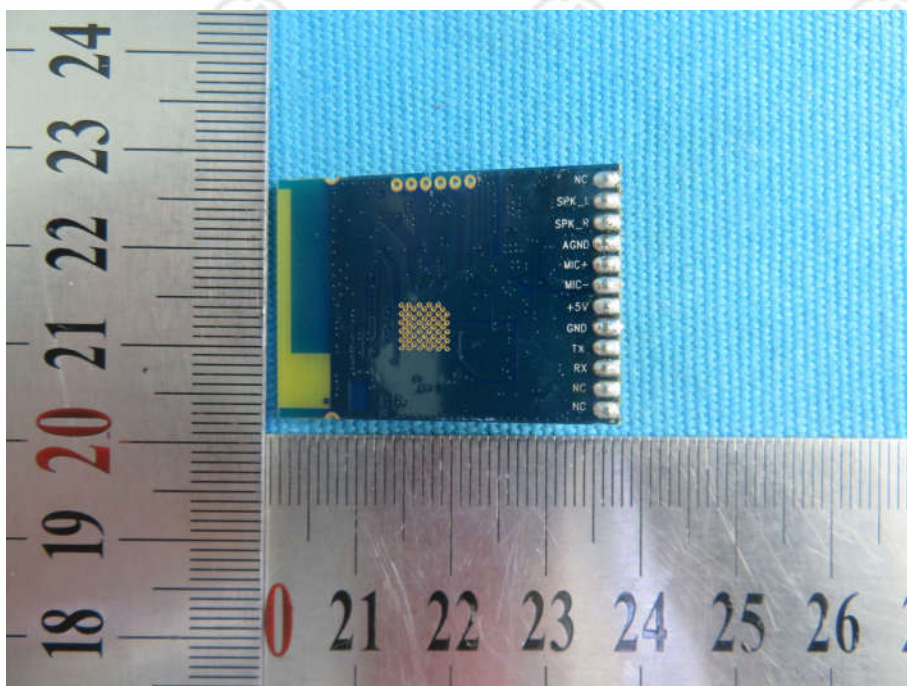
View of Product-16



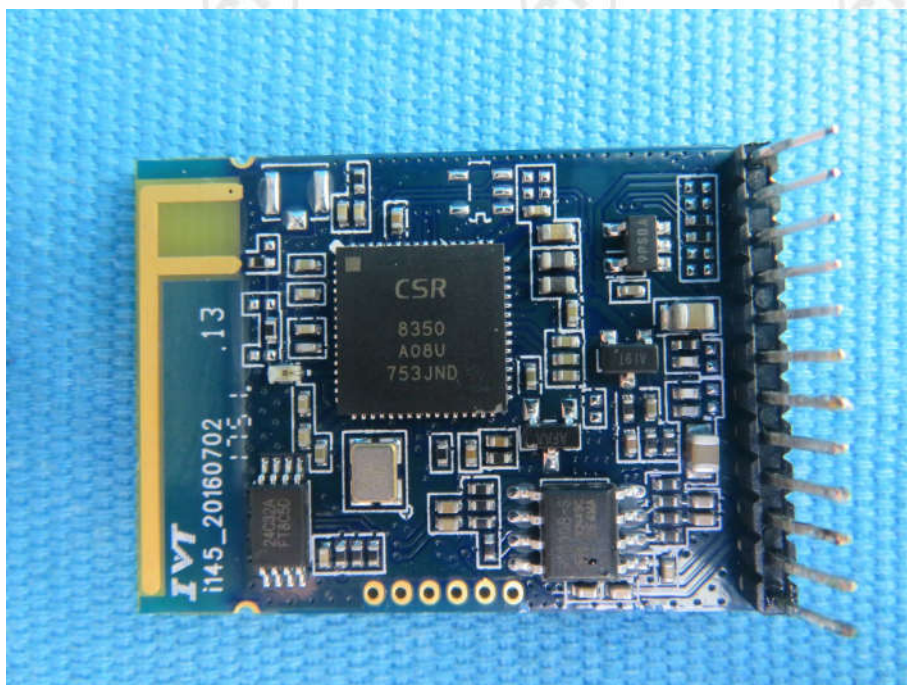
View of Product-17



View of Product-18



View of Product-19



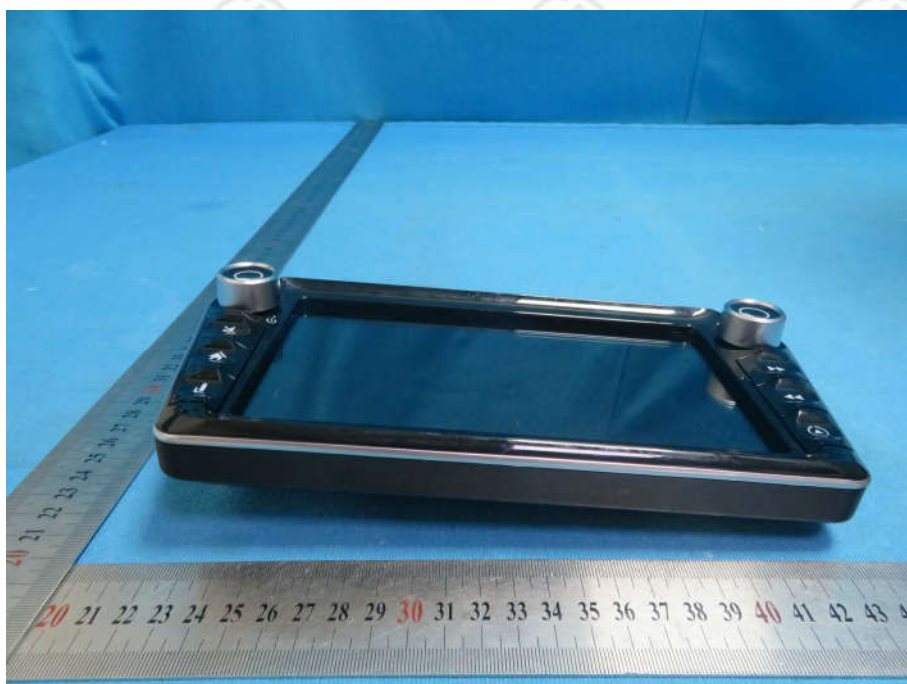
View of Product-20



View of Product-21



View of Product-22



View of Product-23



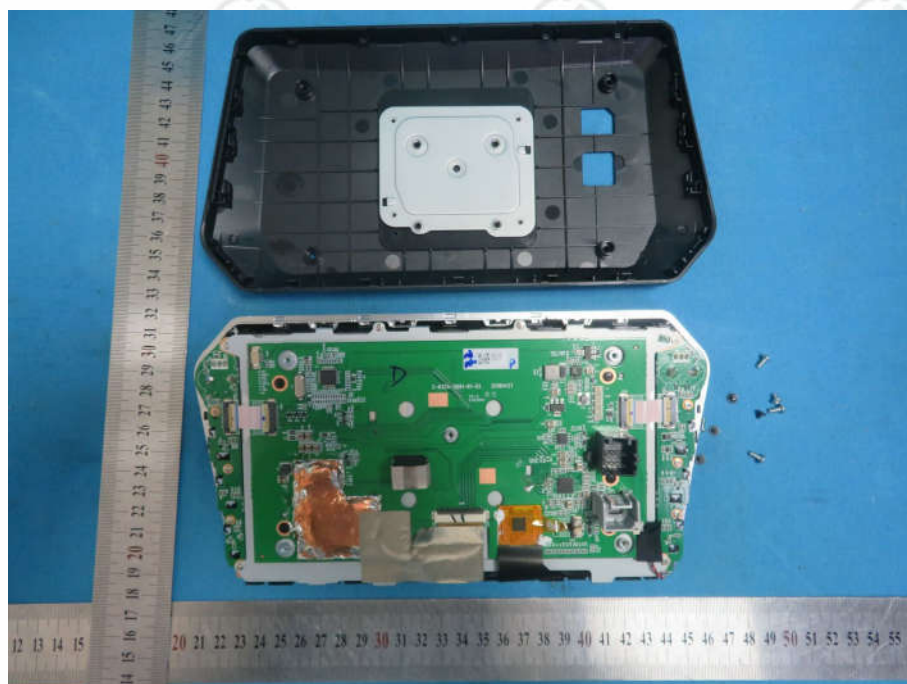
View of Product-24



View of Product-25



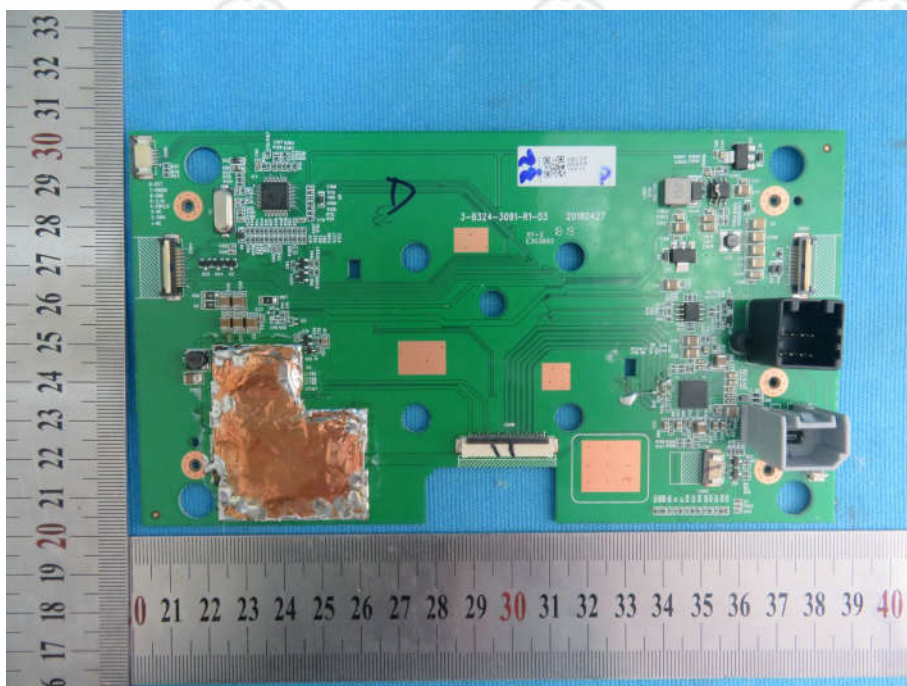
View of Product-26



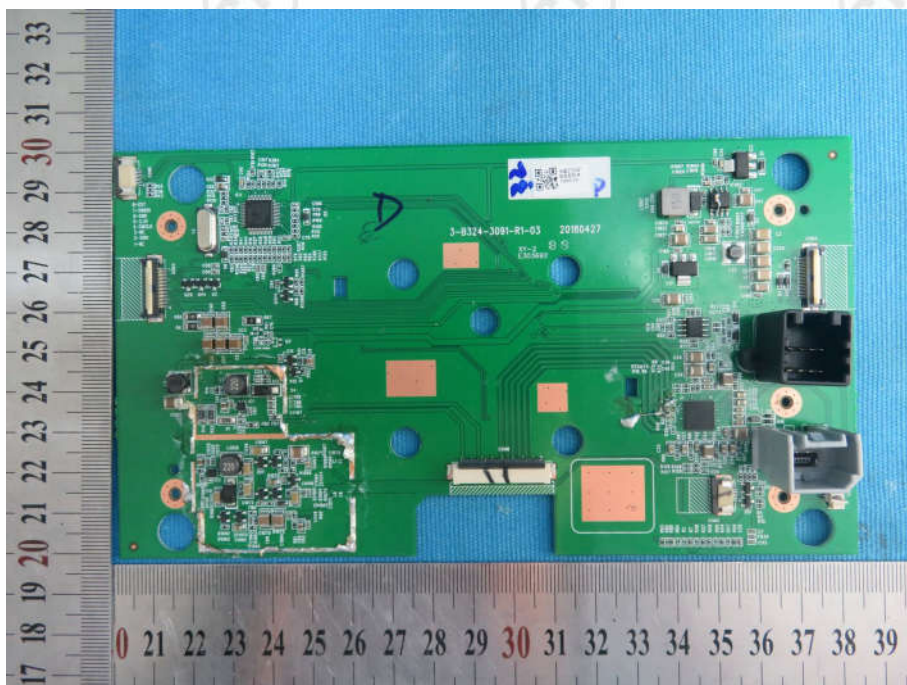
View of Product-27



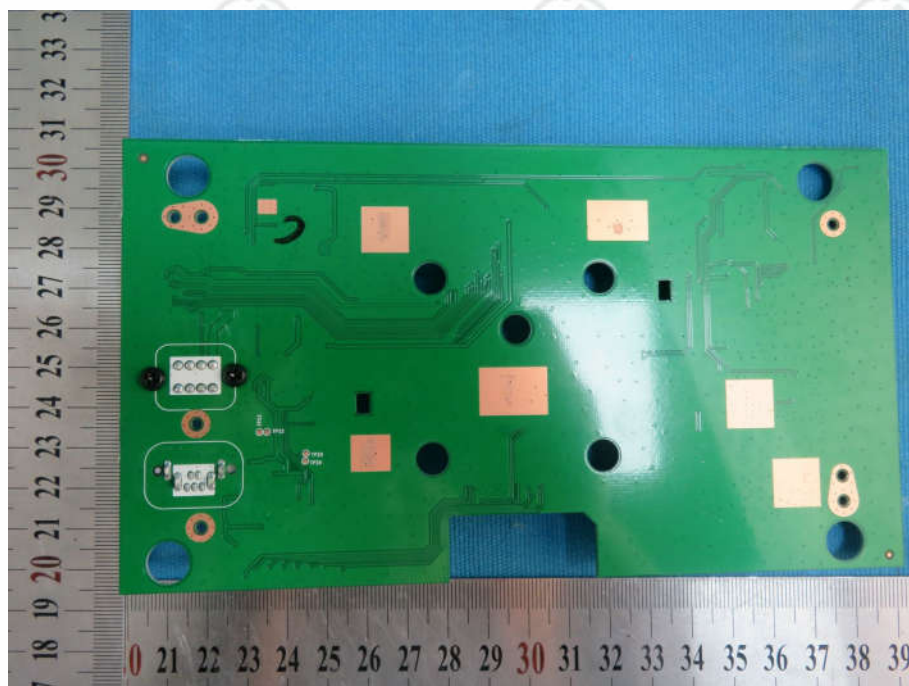
View of Product-28



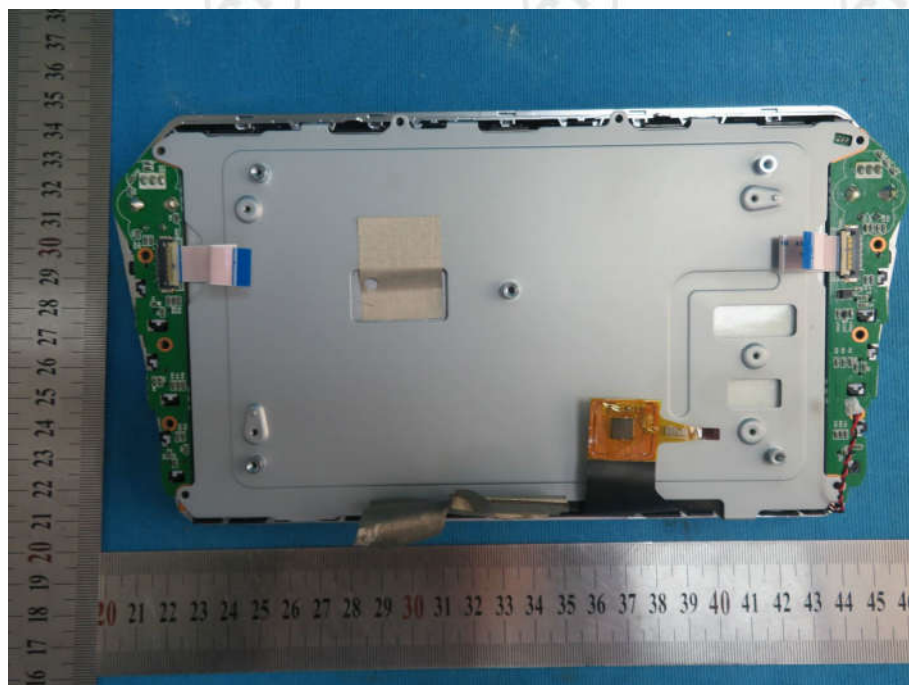
View of Product-29



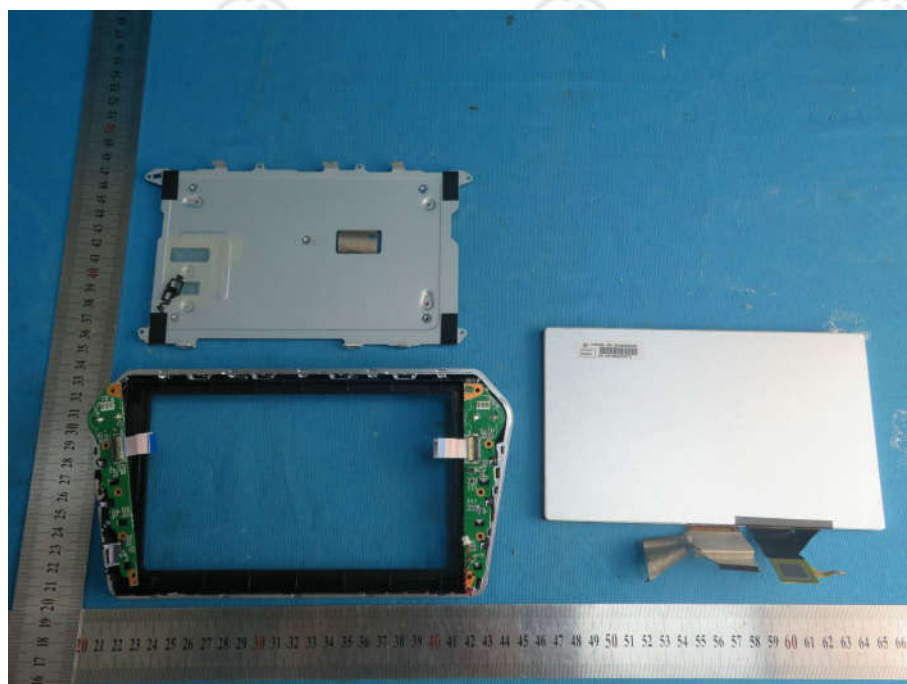
View of Product-30



View of Product-31



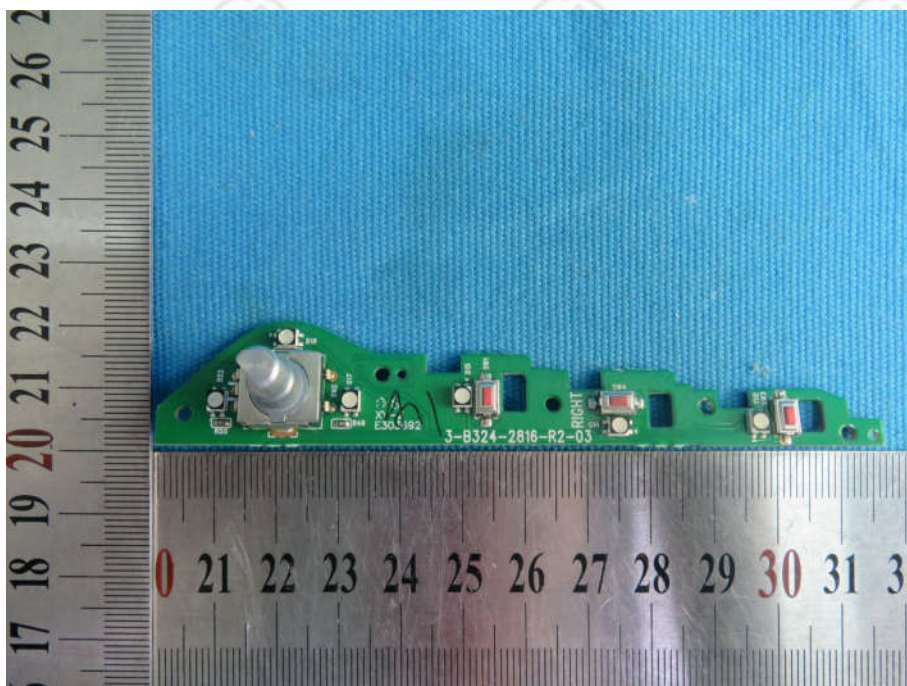
View of Product-32



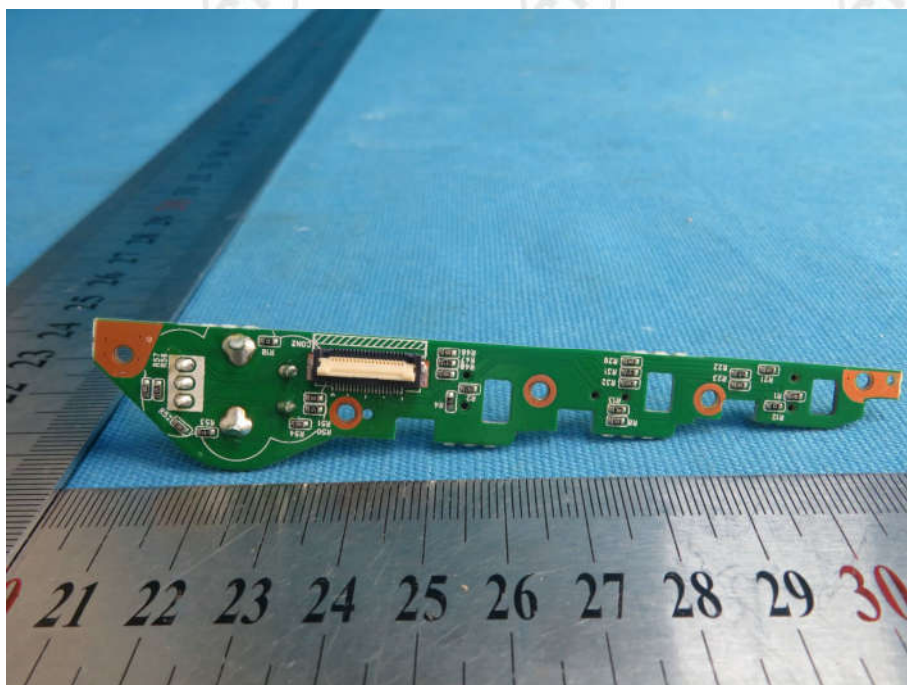
View of Product-33



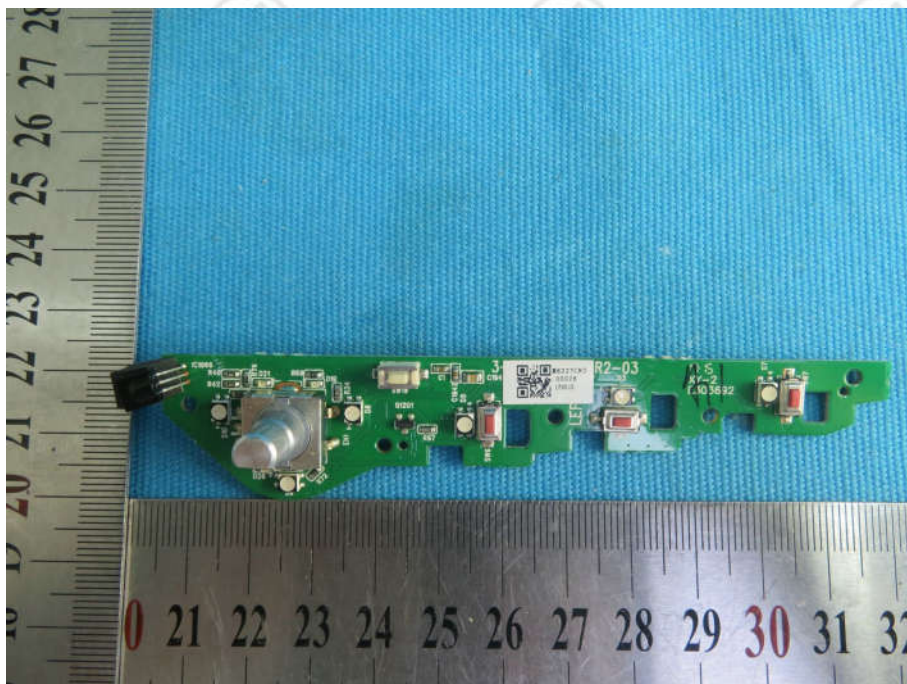
View of Product-34



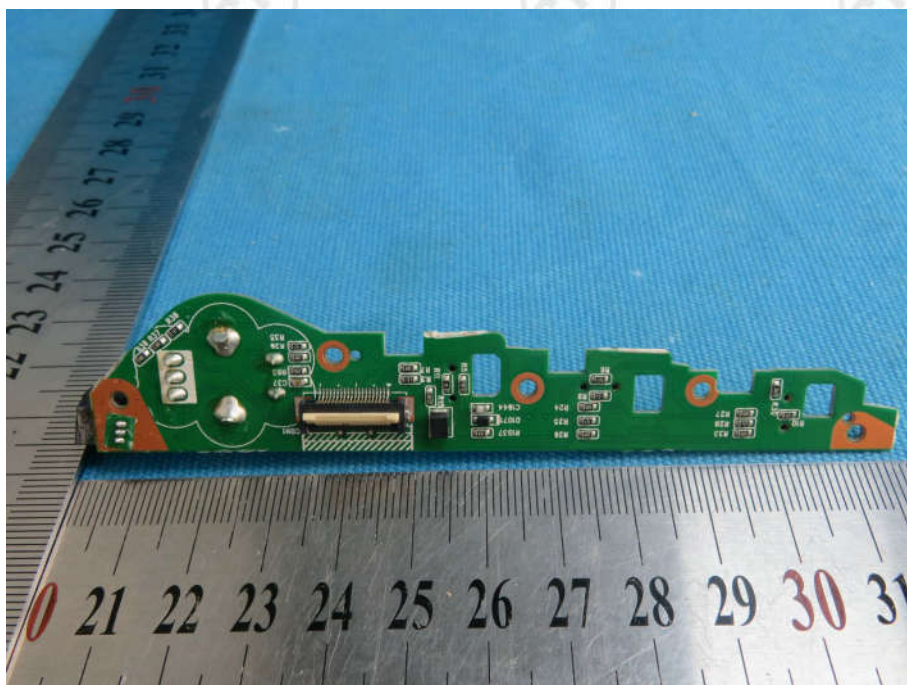
View of Product-35



View of Product-36



View of Product-37



View of Product-38

*** End of Report ***

The test report is effective only with both signature and specialized stamp, The result(s) shown in this report refer only to the sample(s) tested. Without written approval of CTI, this report can't be reproduced except in full.