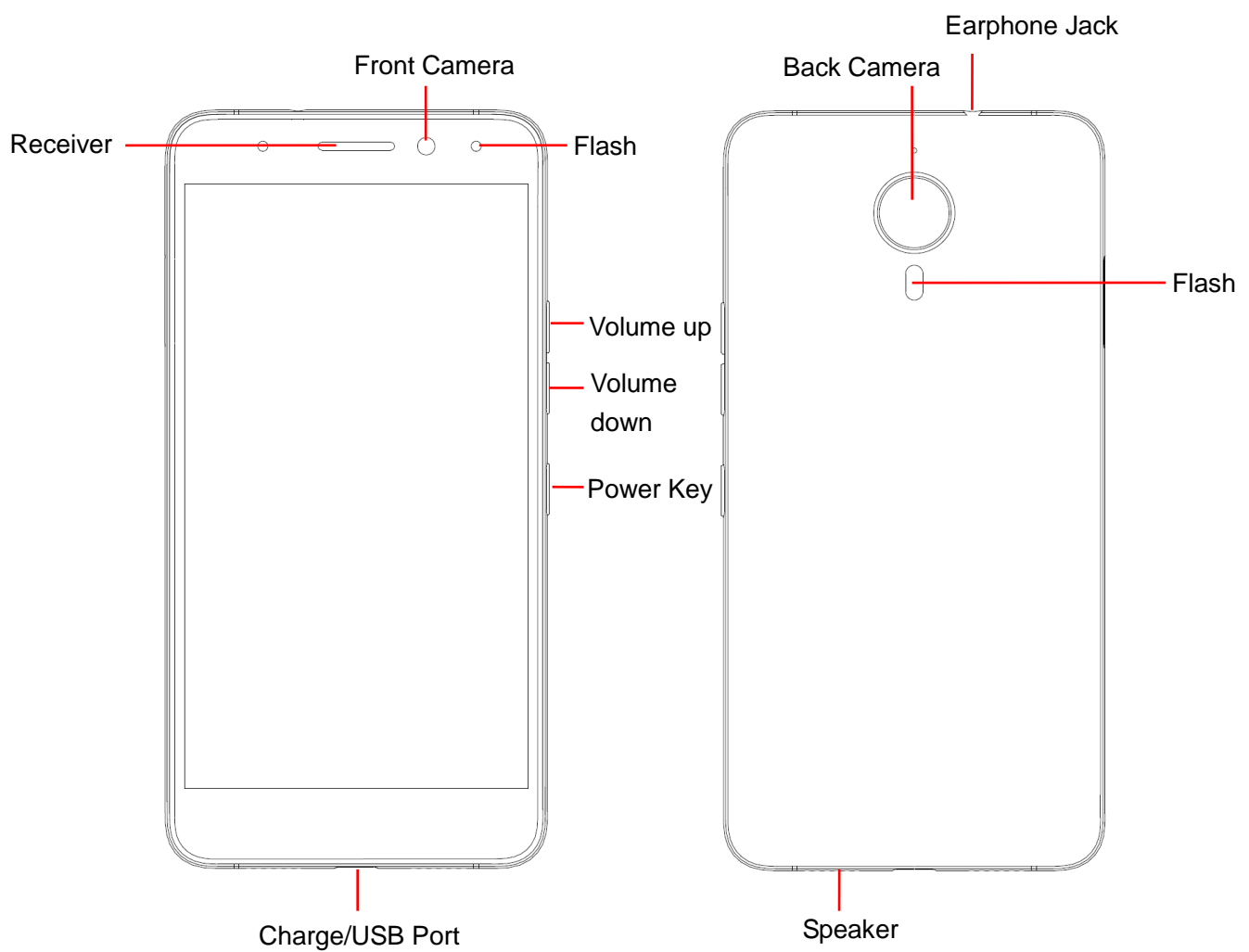


GM 5 Plus

User Guide



1. For your safety	3
2. Learn about the phone	4
3. Before using	5
4. Getting started	5
5. Communication	8
6. Multimedia	9
7. Connecting to networks and devices	10
8. Warnings and notes	12

1. For your safety

Read these simple guidelines. Not following them may be dangerous or illegal.



SWITCH OFF IN HOSPITALS

Follow any restrictions. Switch the device off near medical equipment. Do not use the device where blasting is in progress.

Please keep this cell phone away from children, as they could mistake it for a toy, and hurt themselves with it.

Don't try to modify the phone except by the professional.

Warning!

Only use the authorized spare parts, otherwise it may damage the phone and the warranty will **be void**. And it may be dangerous.



SWITCH OFF WHEN REFUELING

Don't use the phone at a refueling point. Don't use near fuel or chemicals.



SIM CARDS ARE PORTABLE

Keep your phone, phone parts and accessories out of children's reach

Notice: The T-Flash Card can be used as a Memory Disk, the USB cable is necessary.



BATTERY

Please do not destroy or damage the battery, it can be dangerous and cause fire.

Please do not throw battery in fire **to avoid danger**

When battery cannot be used, **please dispose in an environmental safe method**

Do not try to dismantle the battery.

If the battery or the charger is broken or old, please stop using them. **And replace with certified genuine battery**



USE QUALITY EQUIPMENT

Use our authorized equipment **to avoid danger**



ROAD SAFETY COMES FIRST

Give full attention while driving; pull off the road or park before using your phone. **Please follow traffic rules of local city/town**



INTERFERENCE

All wireless devices may be susceptible to cause interference, which could affect performance.



SWITCH OFF IN AIRCRAFT

Wireless devices can cause interference in aircraft. It's not only dangerous but also illegal to use mobile phone in an aircraft.

2. Learn about the phone

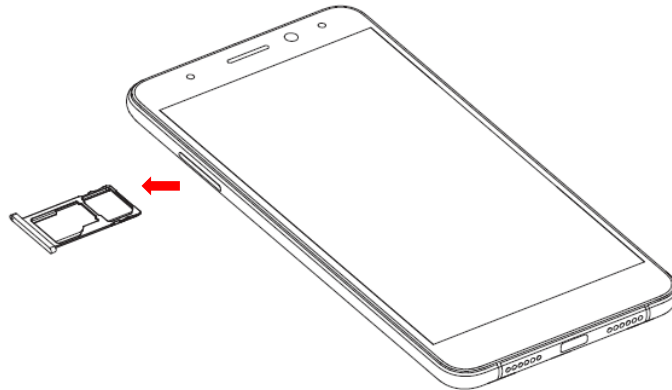
Button	Press	Press & hold
Power key (Right side)	Turns on/off the screen.	Opens a menu with options for Power off the phone.
Volume Up/Down (Right side)	When a call is in progress, Increases or decrease the call volume, When the phone is ringing, silences the ringer. On the Home screen when no calls in progress, Increase or decreases the ringtone volume, or sets the phone to be silent instead of ringing. In other applications, controls the volume of music, spoken directions, and other audio.	Quickly increasing the ringtone volume to maximum or minimum.

3. Before using

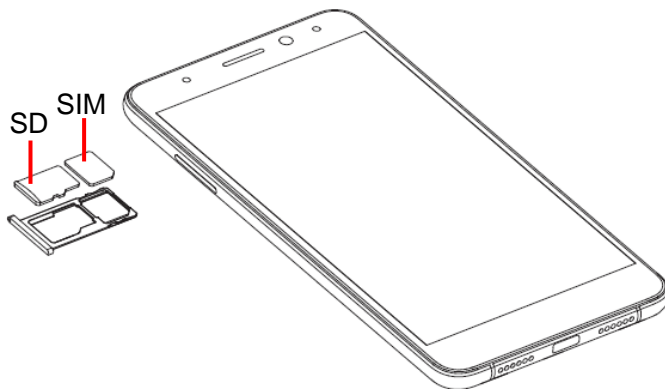
Insert SIM card

To insert Micro SIM card:

1. Switch off the mobile phone and remove the battery.



2. Insert the SIM card correctly and memory card in the battery cover.



3. Finally insert the battery.

Note: The SIM card is a small object; please keep the card out of the reach of children to avoid swallowing the card by accident. Do not touch the metal surface of the SIM card and keep it away from electromagnetic fields to avoid loss and damage of the data. You will not be able to connect to the network if the SIM card is damaged.

Charger

1. Connect the charger to the charger jack on the phone.
2. Next connect the charger to a power socket, the charging starts, with the charging icon in an animated state.
3. When the charging icon becomes static, it indicates that the battery is full.
4. Disconnect the charger from the power socket and the phone.

Note: Slight heating during charging is normal. It indicates that the battery is full, when the charging icon becomes static.

4. Getting started

4.1 Turn on/off your phone

- Turn on the phone

Long press the **power key** to start up the cell phone. If you have started up the SIM card locked, you have to enter the PIN of SIM card.

- Turn off the phone

Long press the **power key**, a context menu will prompt, touch “**Power off**” to switch off the cell phone.

- To wake up the phone

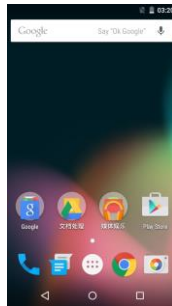
If you don't use the phone for a while, the Home screen or other screen you are viewing is replaced with the lock screen and then the screen darkens, to conserve the battery.

1. Press the **Power** button.
2. Drag the lock icon to any direction. The last screen you were working on opens.



4.2 Getting to know the Home screen

The Home screen is your starting point to access all the features on your phone. It displays application icons; You can customize the Home screen with different wallpaper and display the items you want.



At the top of the screen, the Status bar displays the time, information about the status of your phone, and icons for notifications that you've received.

4.3 Using the touch screen

The main way to control Android features is by using your finger to touch icons, buttons, menu items, the onscreen keyboard, and other items on the touch screen.

Touch: To act on items on the screen, such as application and settings icons, to type letters and symbols using the onscreen keyboard, or to press onscreen buttons, you simply touch them with your finger.

Touch & hold: Touch & hold an item on the screen by touching it and not lifting your finger until an action occurs.

Drag: Touch & hold an item for a moment and then, without lifting your finger, move your

finger on the screen until you reach the target position. You drag items on the Home screen to reposition them

Swipe or slide: To swipe or slide, you quickly move your finger across the surface of the screen, without pausing when you first touch (so you don't drag an item instead). For example, you slide the screen up or down to scroll a list, and in some Calendar views you swipe quickly across the screen to change the range of time visible.

Double-tap: Tap quickly twice on a webpage, map, or other screen to zoom. For example, you can double-tap a section of a webpage in Browser to zoom that section to fit the width of the screen. In Maps, and in other applications, Double-tapping after pinching to zoom in some applications, such as browser, reflows a column of text to fit the width of the screen.

Pinch: In some applications (Such as Maps, Browser, and Gallery) you can zoom in and out by placing two fingers on the screen at once and pinching them together (to zoom out) or spreading them apart (to zoom in).

Rotate the screen: On most screens, the orientation of the screen rotates with the phone as you turn it from upright to its slide and back again. You can turn this feature on and off.

4.4 Customizing the Home screen

To add an item on the Home screen

Enter the main menu, touch & hold the icon of an application, drag it to "Desktop" shown on the top of screen, then the application will be added to the Home screen.

To remove an item from the Home screen

1. Touch & hold the item you want to remove. Don't lift your finger. The top of the application will appear "Remove" icon.
2. Drag the item to the "Remove" icon.
3. When the icon turns red, lift your finger.

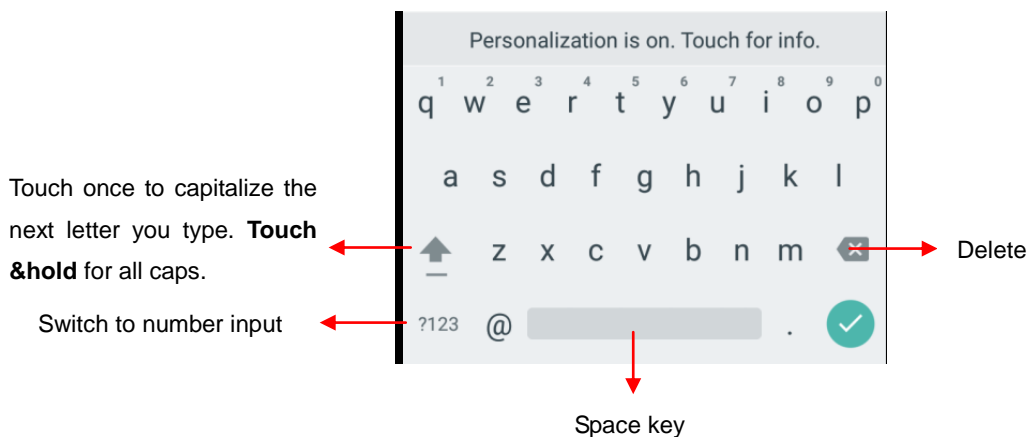
4.5 Connect to network

When you assemble your phone with a SIM card from your wireless service provider, your phone is configured to use your provider's mobile networks for voice calls and for transmitting data.


- **Main menu--> Settings-->All settings-->SIM cards;** the name of the wireless service provider you're currently registered with is selected in the list.
- Click the name of the network provider, you can rename it .
- You can set default SIM for voice call and messaging;

4.6. Input text

You can touch a text field where you want to enter text to open the keyboard.



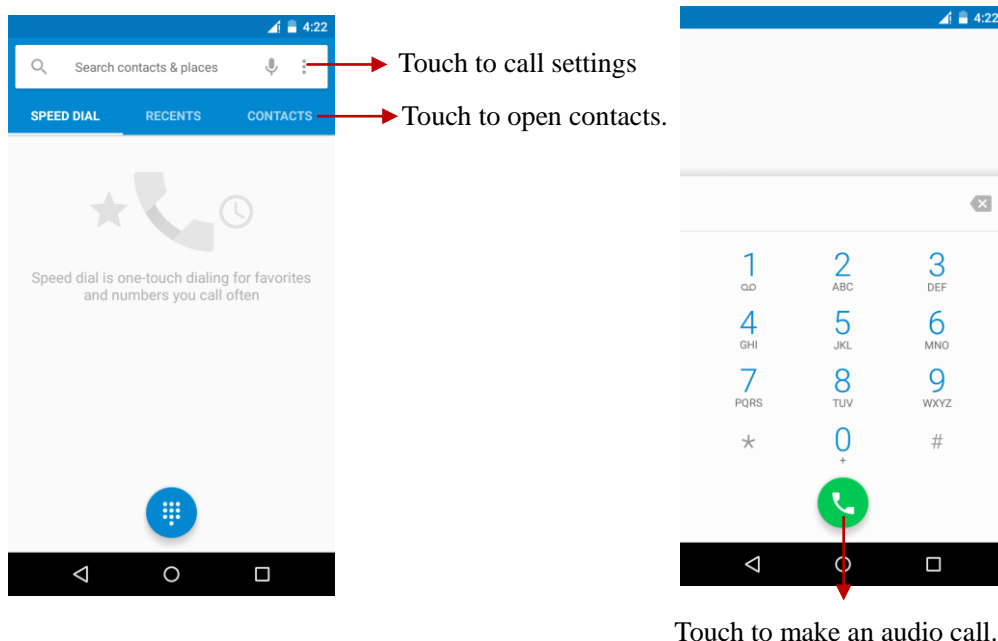
To enter text

- Touch a text field, the onscreen keyboard opens.
- Touch the keys on the keyboard to type; the characters you've entered appear in a strip above the keyboard.
- Use the Delete key  to erase characters to the left of the cursor.
- When you're finished typing, Press Back to close the keyboard.

5. Communication

5.1 Make a call

- * Touch the phone icon on the Home screen or if you're already working with Contacts, touch the **Phone** tab.
- * Enter the phone number you want to dial;
- * Touch the phone icon to dial the number that you entered. You can select voice call or Video call.



5.2 Messaging

You can use this phone to exchange text messages and multimedia messages with your friends on their mobile phones. The messages come to and from the same contact or phone number will into a single conversation, so you can see your entire message history with a person conveniently.

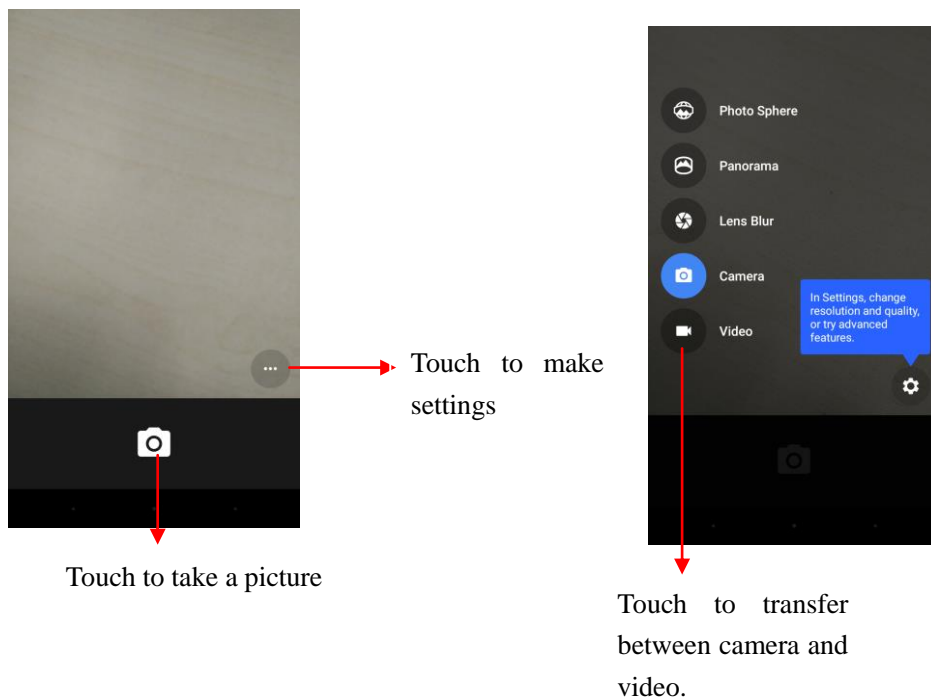
6. Multimedia

6.1 Camera

Camera is a combination camera and camcorder that you use to shoot and share pictures and videos.

Note1: Pictures and videos are stored on the SD or phone storage

6.1.1 Take a picture



- Adjust your exposure and other settings if you wish. Or leave them on automatic.
- Frame your subject on screen.
- Touch the Shutter icon on screen.

6.1.2 To shoot a video

- Adjust the quality and other settings if you wish. Or leave them on automatic.
- Point the lens to frame the scene where you want to start.
- Touch the Start Video icon. Camera starts shooting the video.
- Touch Stop video icon to stop shooting.

6.2 View albums

Touch the Photos icon to view albums of your pictures and videos. Photos presents the pictures and videos, including those you've taken with Camera and those you downloaded from the web or other locations.

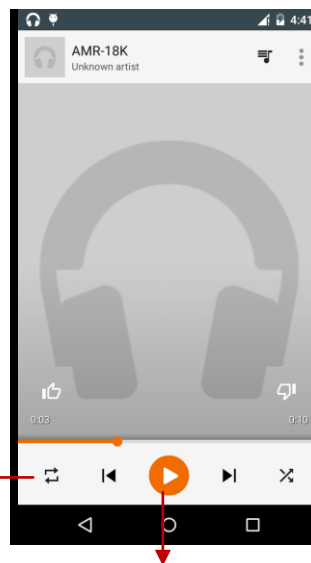
You can do the following operations:

- To share pictures: you can share your pictures through MMS, Bluetooth, and so on.
- To delete pictures: You can delete the pictures you are viewing.
- To get details about the picture: You can view more details about the picture.

6.3 Music

You use Music to organize and listen to music and other audio files that you transfer to your computer.

Touch to change the Single Cycle, No Repeat, Random Playing or Repeating current List.



Touch to stop or start playing

7. Connecting to networks and devices

Your phone can connect to a variety of networks and devices, including mobile networks for voice and data transmission, Wi-Fi data networks, and Bluetooth devices, such as headsets. You can also connect your phone to a computer, to transfer files from your SD card and share your phone's mobile data connection via USB or as a portable Wi-Fi hotspot.

7.1 WLAN

WLAN is a wireless networking technology that can provide internet access at distance of up to 100 meters, depending on the WLAN router and your surroundings. You can configure the WLAN as follow:

- **Main menu-->Settings-->Wi-Fi** check **Wi-Fi** to turn it on.

- Enter **Wi-Fi**. The phone scans for available Wi-Fi networks and displays the names of those it finds. Secured networks are indicated with a Lock icon. If the phone finds a network, you connected previously, It connects to it.
- Touch a network to connect to it.
If the network is open, you are prompted to confirm that you want to connect to that network by touching connect.
If the network is secured, you're prompted to enter a password or other credentials

7.2 Bluetooth

Bluetooth is a short-range wireless communications technology that devices can use to exchange information over a distance of about 10 meters. The most common Bluetooth devices are headphones for making calls or listening to music, hands-free kits for cars, and other portable device, including laptops and cell phones.

7.2.1 To send a file

- **Main menu-->Settings-->Bluetooth**, check **Bluetooth** to turn it on.
- Enter **Photos** to select a file, Select **Share--> Bluetooth**.
- The phone will scan for and display the names of all available Bluetooth devices in range.
- Touch the name of the other device in the list to pair them. After paired the file will be sent.

7.2.2 To receive a file

- **Main menu-->Settings --> Bluetooth**, check **Bluetooth** to turn it on. Ensure your Bluetooth been connected within visibility time
- After paired, the phone will receive the file. The file you received will be saved to the SD card.

7.2.3 To connect to a Handsfree device

- **Main menu-->Settings--> Bluetooth**, Search for devices;
- Turn on the Handsfree device, Select the Handsfree device in the list to pair.
- After paired, you can use the Handsfree device to listen music and receive call.

7.3Connecting to a computer via USB

You can connect your phone to a computer with a USB cable, to transfer music, pictures, and other files between your SD card and the computer.

When connecting your phone to a computer and mounting its SD card, you must follow your computer's instructions for connecting and disconnecting USB devices, to avoid damaging or corrupting the files on your SD card

You can't share your phone's data connection via USB cable at the same time. If you are using USB tethering, you must turn that off first.

7.3.1 To connect your phone to a computer via USB

1. Use the USB cable that came with your phone to connect the phone to a USB port on your computer.
2. Touch **File copy** in the screen that opens to confirm that you want to transfer files. When the phone is connected as USB storage, the screen indicates that USB storage is in use and you receive a notification. Your SD card's data is mounted as a drive on your computer. You can now copy files to and from the SD card. During this time, you can't access the SD card from your phone, so you can't use applications that rely on the SD card, such as camera, Gallery, and Music.

7.3.2 To disable phone calls (Airplane mode)

Some locations may require you to turn off your phone's mobile, Wi-Fi, and Bluetooth wireless connections. You can turn off all these wireless connections at once by placing your phone in Airplane mode.

1. In the notification bar quickly set up.

2. Touch 

8. Warnings and notes

Operational Warnings

IMPORTANT INFORMATION ON SAFE AND EFFICIENT OPERATION. Read this information before using your phone. For the safe and efficient operation of your phone, observe these guidelines:

Potentially explosive at atmospheres: Turn off your phone when you are in any areas with a potentially explosive atmosphere, such as fueling areas (gas or petrol stations, below deck on boats), storage facilities for fuel or chemicals, blasting areas and areas near electrical blasting caps, and areas where there are chemicals or particles (Such as metal powders, grains, and dust) in the air.

Interference to medical and personal Electronic Devices: Most but not all electronic equipment is shielded from RF signals and certain electronic equipment may not be shielded against the RF signals from your phone.

Audio Safety: This phone is capable of producing loud noises which may damage your hearing. When using the speaker phone feature, it is recommended that you place your phone at a safe distance from your ear.

Other Media Devices, hospitals: If you use any other personal medical device, consult the manufacture of your device to determine if it is adequately shielded from external RF energy. Your physician may be able to assist you in obtaining this information. Turn your phone OFF in health care facilities when any regulations posted in these areas instruct you to do so. Hospitals or health care facilities may be using equipment that could be sensitive to external RF energy.

Product statement on handling and use: You alone are responsible for how you use your phone and any consequences of its use.

You must always switch off your phone wherever the use of a phone is prohibited. Use of

your phone is subject to safety measures designed to protect users and their environment. Always treat your phone and its accessories with care and keep it in a clean and dust-free place

Do not expose your phone or its accessories to open flames or lit tobacco products.

Do not expose your phone or its accessories to liquid, moisture, or high humidity.

Do not drop, throw, or try to bend your phone or its accessories

Do not use harsh chemicals, cleaning solvents, or aerosols to clean the device or its accessories.

Do not attempt to disassemble your phone or its accessories; only authorized personnel must do so.

Do not expose your phone or its accessories to extreme temperatures, minimum 32°F and maximum 113°F (0°C to 45°C).

Battery: Your phone includes an internal lithium-ion or lithium-ion polymer battery. Please note that use of certain data applications can result in heavy battery use and may require frequent battery charging. Any disposal of the phone or battery must comply with laws and regulations pertaining to lithium-ion or lithium-ion polymer batteries.

Faulty and damaged products: Do not attempt to disassemble the phone or its accessory. Only qualified personnel must service or repair the phone or its accessory. If your phone or its accessory has been submerged in water, Punctured, or subjected to a severe fall, do not use it until you have taken it to be checked at an authorized service center.

EU Regulatory Conformance:

Hereby, GENERAL MOBILE INC. declares that this device is in compliance with the essential requirements and other relevant provisions of Directive 1999/5/EC.

CE 0560 !



To prevent possible hearing damage, do not listen at high volume levels for long periods.



Adapter shall be installed near the equipment and shall be easily accessible

The device is going on be operated in 5150~5350 frequency range. It is restricted indoor environment only.

Caution

Risk of explosion if battery replaced by an incorrect type.

Dispose of used batteries according to the instructions.

The device could be used with a separation distance of 0.5cm to the human body.

FCC Regulations:

This mobile phone complies with part 15 of the FCC Rules. Operation is subject to the following two conditions: (1) This device may not cause harmful interference, and (2) this device must accept any interference received, including interference that may cause undesired operation.

This mobile phone has been tested and found to comply with the limits for a Class B digital device, pursuant to Part 15 of the FCC Rules. These limits are designed to provide reasonable protection against harmful interference in a residential installation. This equipment generates, uses and can radiate radio frequency energy and, if not installed and used in accordance with the instructions, may cause harmful interference to radio communications. However, there is no guarantee that interference will not occur in a particular installation. If this equipment does cause harmful interference to radio or television reception, which can be determined by turning the equipment off and on, the user is encouraged to try to correct the interference by one or more of the following measures:

- Reorient or relocate the receiving antenna.
- Increase the separation between the equipment and receiver.
- Connect the equipment into an outlet on a circuit different from that to which the receiver is connected.
- Consult the dealer or an experienced radio/TV technician for help.

FCC Note:

Caution: Changes or modifications not expressly approved by the party responsible for compliance could void the user's authority to operate the equipment.

RF Exposure Information (SAR)

This phone is designed and manufactured not to exceed the emission limits for exposure to radio frequency (RF) energy set by the Federal Communications Commission of the United States.

During SAR testing, this device was set to transmit at its highest certified power level in all tested frequency bands, and placed in positions that simulate RF exposure in usage against the head with no separation, and near the body with the separation of 10 mm. Although the SAR is determined at the highest certified power level, the actual SAR level of the device while operating can be well below the maximum value. This is because the phone is designed to operate at multiple power levels so as to use only the power required to reach the network. In general, the closer you are to a wireless base station antenna, the lower the power output.

The exposure standard for wireless devices employing a unit of measurement is known as the Specific Absorption Rate, or SAR.

The SAR limit set by the FCC is 1.6W/kg.

This device is complied with SAR for general population /uncontrolled exposure limits in ANSI/IEEE C95.1-1992 and had been tested in accordance with the measurement methods and procedures specified in IEEE1528.

The FCC has granted an Equipment Authorization for this model phone with all reported SAR levels evaluated as in compliance with the FCC RF exposure guidelines. SAR information on this model phone is on file with the FCC and can be found under the

Display Grant section of www.fcc.gov/oet/ea/fccid after searching on FCC ID: XAPGM5PLUS.

For this device, the highest reported SAR value for usage against the head is 0.33 W/kg, for usage near the body is 1.41 W/kg.

While there may be differences between the SAR levels of various phones and at various positions, they all meet the government requirements.

SAR compliance for body-worn operation is based on a separation distance of 10 mm between the unit and the human body. Carry this device at least 10 mm away from your body to ensure RF exposure level compliant or lower to the reported level. To support body-worn operation, choose the belt clips or holsters, which do not contain metallic components, to maintain a separation of 10 mm between this device and your body.

RF exposure compliance with any body-worn accessory, which contains metal, was not tested and certified, and use such body-worn accessory should be avoided.