

User manual

INSTRUCTIONS FOR RADIO CONTROL OPERATOR SINGLE ENTRY TRANSMITTER MODEL NO. : C220

Read the following instructions thoroughly before using transmitter.

This transmitter must be adjusted so that the coding switches match the coding switches on your present operating transmitter or receiver.

1.Remove the transmitter cover

Remove the access cover from the front of the transmitter by sliding the cover away from the top of the transmitter(Figure A).this will expose the battery and the dip switches. the code can be changed using a small screwdriver.

2.Setting the code

You may set your transmitter to any code you desire,but be sure the code you set matches on both your transmitter and receiver.

there are 9bit dip switches on your transmitter,each of which can be placed in three different positions(+,0,-). Do not set all switches in same position,such as all +,all - ,all 0(Figure B).

WARNING:No other adjustments should be made inside the transmitter.

Now that you have selected your personal code,replace the transmitter cover.

User can click the button. A signal transmit out. If the inside dip switch match the receiver switch,receiver will work.

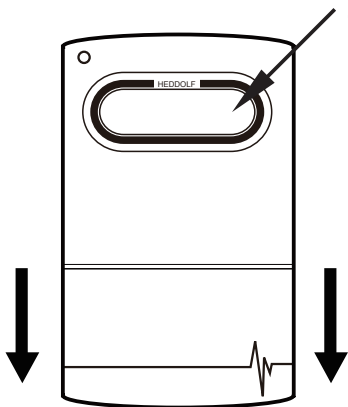


FIGURE A

Dip switch

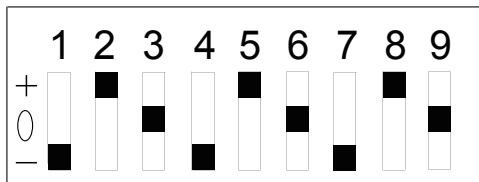


FIGURE B

FCC NOTE:

This device complies with Part 15 of the FCC Rules. Operation is subject to the following two conditions:(1) this device may not cause harmful interference,and (2) this device must accept any interference received,including interference that may cause undesired operation.

Information to user.

Any Changes or modifications not expressly approved by the party responsible for compliance could void the user's authority to operate the equipment.

§ 15.105 Information to the user.

Note: This equipment has been tested and found to comply with the limits for a Class B digital device, pursuant to part 15 of the FCC Rules. These limits are designed to provide reasonable protection against harmful interference in a residential installation. This equipment generates uses and can radiate radio frequency energy and, if not installed and used in accordance with the instructions, may cause harmful interference to radio communications. However, there is no guarantee that interference will not occur in a particular installation. If this equipment does cause harmful interference to radio or television reception, which can be determined by turning the equipment off and on, the user is encouraged to try to correct the interference by one or more of the following measures:

- Reorient or relocate the receiving antenna.
- Increase the separation between the equipment and receiver.
- Connect the equipment into an outlet on a circuit different from that to which the receiver is connected.
- Consult the dealer or an experienced radio/TV technician for help.