



Safety Information

IMPORTANT SAFETY INSTRUCTIONS

When using electrical products, basic precautions should always be followed including the following:

a) READ AND FOLLOW ALL SAFETY INSTRUCTIONS.

b) This product is for indoor use only. The electrical rating 0.2 A 120 V 60 Hz.

c) Do not use this product outdoors.

d) This seasonal use product is not intended for permanent installation or use.

e) Do not mount or place near gas or electric heaters, fireplace, candles or other similar sources of heat.

f) Do not secure the wiring of the product with staples or nails, or place on sharp hooks or nails.

g) Do not let lamps rest on the supply cord or on any wire.

h) Unplug the product when leaving the house, when retiring for the night, or if left unattended.

i) This is an electric product – not a toy! To avoid risk of fire, burns personal injury and electric shock it should not be played with or placed where small children can reach it.

j) Do not use this product for other than its intended use.

k) Do not hang ornaments or other objects from cord, wire, or light string.

l) Do not close doors or windows on the product or extension cords as this may damage the wire insulation.

m) Do not cover the product with cloth, paper or any material not part of the product when in use.

n) This product is equipped with push-in type lamps. Do not twist lamps.

o) This product employs overload protection (fuse). A blown fuse indicates an overload or short-circuit situation. If the fuse blows, unplug the product from the outlet. Also unplug any additional strings or products that may be attached to the product. Replace the fuse as per the user servicing instructions (follow product marking for proper fuse rating) and check the product. If the replacement fuse blows, a short-circuit may be present and the product should be discarded.

p) Read and follow all instructions that are on the product or provided with the product.

q) SAVE THESE INSTRUCTIONS.

CAUTION! – ALWAYS UNPLUG YOUR TREE FROM ITS POWER SOURCE BEFORE ASSEMBLING OR DISASSEMBLING.

CAUTION

a) To reduce the risk of electric shock, use only with the power-supply cord provided or with a cord set intended for indoor use.

CAUTION

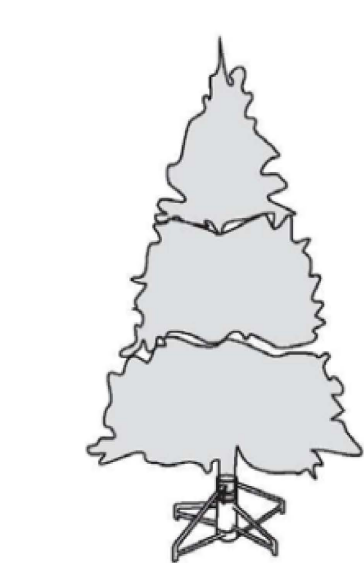
b) Do not use a cracked, frayed, or damaged cord. Inspect the cord periodically.

c) Do not abuse cord – Do not carry product by the cord or yank or pull it to disconnect from the outlet.

d) Disconnect the product from the outlet when not in use.

7.5ft Lanier Noble Tree

SKU#1007686746



Pre-Assembly

Package Contents

Part	Description	Quantity
A	Tree top	1
B	Tree center	1
C	Tree bottom	1
D	Tree stand	1
E	Power cord	1
F	Remote control	1
G	Repacement bulb	6

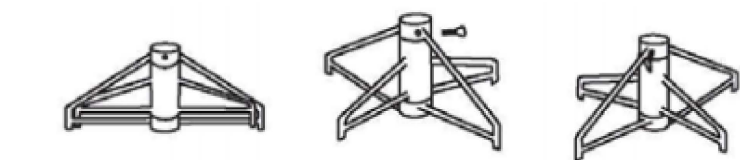
Assembly

Assembling the tree stand

Step 1. Choose a location near a wall outlet.

Step 2. Open the stand to a 90 degree angle until the hole lines up with the hole on the tube.

Step 3. Screw an eye bolt into the hole



Assembling the tree

This tree assmbles with Quick Set technology

Please remove protective covers from the base of the pole for each tree

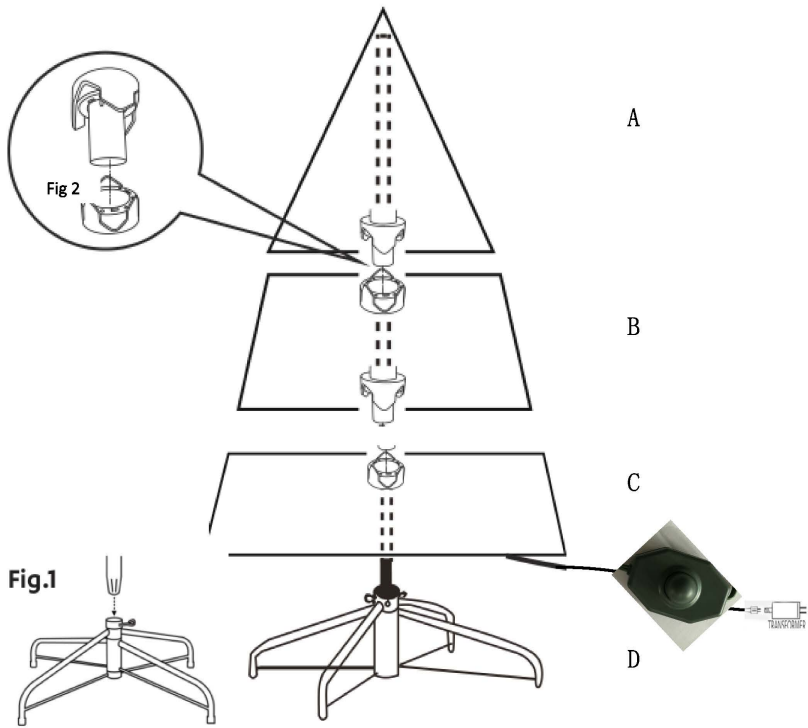
section before assembling and keep the carton for future storage

1. Each tree section contains a tag labeled A, B, C,and Tree stand. Please identify all sections before assembling.

2. Select an area where the ground is firm enough to hold the tree upright.

3. If you are having difficulties with any of the tree components, 2-person assembly is recommended.

4. Put the bottom section pole into the tree stand and make sure it is inserted properly as in Fig 1



5.Continue by inserting the upper tree section into the lower section until inserting the treetop. Make sure the tree is stable and upright.Tighten the eye bolt

6.One plug tree does not require the connection of light strings between sections. Electrical connections for lights are made as each section is assembled. Connect the electrical cord at the base of tree into a standard electrical outlet or other power sources. Find the power cord at the bottom section seen in Fig 2.

7.To shape the tree please refer to Fig.3. All hinged branches should fall into lower position during assembly. Any branches that remain upright should be gently lowered by hand.



360x290mm

Operation

Turning on the tree

Step 1. Plug the well connected power cord from the tree section (C) into a proper outlet.

Instructions of dual color light foot petal control & remote control

Please note this tree has a foot petal control and a remote control
Press the button on the control box, select from the following corresponding lighting functions:

- 1 Combination
- 2 Steady Warm White
- 3 Steady Multi
- 4 Warm White Fast Fade
- 5 Multi Fast Fade
- 6 Warm White- -Multi Alternating
- 7 Warm White- -Multi Slow Fade
- 8 Warm White- -Multi Fast Fade
- 9 OFF



Remote control

- 1. Remove the insulation tab of the remote control.
- 2. Press selector button and wait for a second to enjoy light effects



open the tree light



off the tree light



Continue the next light function



Reture to previous function



Press the DEMO button ,tree is now in DEMO mode. Within DEMO mode,1~8 light circulative function , the tree will display the COMBO pattern at all time unless the function button is pressed to change the flashing pattern.



BATTERY REPLACEMENT

- 1. Open battery cover
- 2. Replace the used battery with a new CR2025 button cell battery (not included). Make sure that the battery is installed with the correct polarity (+ and -).
- 3. Push the battery cover.

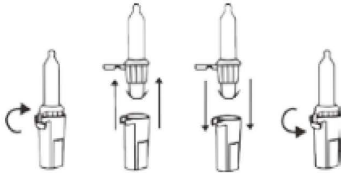
!WARNING

- 1. Dispose used battery properly. observe local regulations regarding disposal of hazardous waste.
- 2. Ensure the batteries are installed correctly with regard to polarity (+ and -).
- 3. This product is powered by a lithium battery. Due to their small size, lithium batteries can easily be swallowed by children. Ingestion of such batteries has been known to cause death.
- 4. This product contains a lithium battery which if swallowed has been known to cause death.
- 5. Do not expose light set to moisture.
- 6. Remove batteries when not used for an extended period of time, or when depleted.
- 7. Clean the battery contacts prior to battery installation.
- 8. The external flexible cable or cord of this luminaire cannot be replaced; If the cord is damaged, the luminaire shall be destroyed.
- 9. Dispose of used batteries properly by following directions on batteries.
- 10. Use only CR2025 batteries for the remote controller.
- 11. DO NOT DISPOSE OF BATTERIES IN FIRE. BATTERIES MAY EXPLODE OR LEAK.

Replace the lamp.

- a) Grasp plug and remove from the receptacle or other outlet device. Do not unplug by pulling on cord.
- b) Unlock the burned out LED lamp by lifting the hook and pull lamp and plastic base straight out of lampholder. Do not twist lamps.

- c) Replace lamp with only 3.0 Volt, 0.06 Watt, LED type lamp (provided with product).
- d) Lock the LED lamp.



CAUTION

- 1. To reduce the risk of overheating, replace burned-out lamps promptly. Use 3.0 Volt, 20 mA LED lamps only.
- 2. Risk of fire. This product does not contain lamp shunts, which allow the product to operate if one lamp burns out. Replace lamps only with the spare lamps provided with this product.

If the new lamp base does not fit in lampholder, follow the steps below before step c.

- 1. Pull the reflector out.
- 2. Remove the base of burned out lamp by straightening lamp leads and gently pull lamp out.
- 3. Thread leads of new lamp through holes in old base with one lead in each hole (always match the long lead of new lamp to the hook of lamp base).
- 4. After lamp is fully inserted into base, bend each lead up, like other lamps in the light set so that the leads will touch the contacts inside the lampholder.
- 5. Insert the reflector into the base

CAUTION! — ALWAYS UNPLUG YOUR TREE FROM ITS POWER SOURCE BEFORE ATTEMPTING FUSE AND LAMP REPLACEMENT

Use and Care Instructions

- a) Before using or reusing, inspect product carefully. Discard any products that have cut, damaged, or frayed wire insulation or cords,

cracks in the lampholders or enclosures, loose connections, or exposed copper wire.

- b) When storing the product, carefully remove the product from

wherever it is placed, to avoid any undue strain or stress on the

product conductors, connections, and wires.

- c) When not in use, store neatly in a cool, dry location protected from sunlight

Care and Cleaning

Step 1. Remove all ornaments and decorations.

Step 2. Unplug the cord from the wall outlet and then disconnect each section of the tree. Remove the power cords from the tree bottom (C).

Step 3. Gently lift the tree top straight up to remove from the center section and fold all branches towards the pole.

Step 4. Repeat this step for the center and bottom tree sections.

Step 5. Carefully place all tree sections into a shipping box and tape it shut.

Step 6. Store your tree in a cool, dry place away from sunlight.

Troubleshooting

Problem Solution

The tree does not light	Ensure that connectors of all tree sections are connected into each other well. Make sure power cord plug is securely inserted into a working electrical outlet.
	Check for loose, broken, or missing bulbs and replace as needed with the replacement bulbs provided.
	If you are still experiencing problems with the tree,please call 1-855-434-6543 for instructions.

This device complies with Part 15 of the FCC Rules.

Operation is subject to the following two conditions: (1) This device may not cause harmful interference, and (2) this device must accept any interference received, including interference that may cause undesired operation.

Warning: Please note that changes or modifications of this product is not expressly approved by the party responsible for compliance could void the user's authority to operate the equipment.

NOTE: This equipment has been tested and found to comply with the limits for a Class B digital device, pursuant to Part 15 of the FCC Rules. These limits are designed to provide reasonable protection against harmful interference in a residential installation. This equipment generates, uses and can radiate radio frequency energy and, if not installed and used in accordance with the instructions, may cause harmful interference to radio communications.

However, there is no guarantee that interference will not occur in a particular installation. If this equipment does cause harmful interference to radio or television reception, which can be determined by turning the equipment off and on, the user is encouraged to try to correct the interference by one or more of the following measures:

- Reorient or relocate the receiving antenna.
- Increase the separation between the equipment and receiver.
- Connect the equipment into an outlet on a circuit different from that to which the receiver is connected.
- Consult the dealer or an experienced radio/TV technician for help.

Importer: The Home Depot

Address: 2455 PACES FERRY ROAD ATLANTA, GA 30339

Tel: 1-855-434-6543

Model No.22GU75001